

# UTAH COUGAR ANNUAL REPORT 2012



Publication No. 13-13



# UTAH COUGAR ANNUAL REPORT 2012

Prepared by:

**Heather H. Bernales**  
Biometrician

**John Shivik**  
Mammals Program Coordinator

Publication No. 13-13

Annual Performance Report for Federal Aid Project W-65-M, segments 60 and 61

State of Utah  
Department of Natural Resources  
DIVISION OF WILDLIFE RESOURCES

An Equal Opportunity Employer

**Gregory Sheehan**  
Director

**James F. Karpowitz**  
Director, 2005-2012

## TABLE OF CONTENTS

Introduction .....	1
Methods .....	2
Results .....	2
Permits .....	3
Statewide harvest and mortality .....	4
Sport harvest .....	7
Guiding .....	12
Pursuit .....	13
Livestock depredation .....	17
Appendix: Historic cougar harvest by hunt unit .....	18

## **INTRODUCTION**

The cougar harvest report presents cougar harvest and hunter effort trends across the state of Utah, based on data collected from cougar hunters. This report represents the cougar portion of Federal Aid Project W-65-M, segments 60 and 61, grant agreement periods October 1, 2011 through September 30, 2012 and October 1, 2012 through September 30, 2013, respectively. This Federal Aid project covers cougar hunting season 2011-2012.

In 2011, the Utah Cougar Management Plan was amended to link cougar management to the management of deer, their primary prey. Among the biggest changes was the creation of 8 large cougar management areas that mirrored the areas where an adult deer survival study was underway. A 9<sup>th</sup> cougar management area was also created, made up of units that were home to large numbers of bighorn sheep. These cougar management areas contained the 49 limited-entry, split and harvest-objective hunting units that cougar hunters were likely familiar with. Eleven of these units were managed through a limited-entry permit system, where a hunter had to apply for and draw from a pool of limited permits. The hunter was allowed to hunt the entire limited-entry season, or until the permit was filled. Fifteen units were managed through a harvest-objective system, where a harvest quota was set and an unlimited number of hunters could hunt. Harvest-objective units remained open until the larger cougar management area total quota, or female subquota, was met. If either of these quotas were met before the end of the harvest-objective season, all harvest-objective units within that cougar management area would close early. The only exception was if the unit had a minimum quota, in which case the unit could not close early unless its minimum quota was also met. The remaining 23 units were managed through a split hunting season system, with the first half of the season managed through a limited-entry permit system. A few days after the close of the limited-entry season, the split units reopened under the harvest-objective system described above. Limited-entry permits on split units became valid statewide harvest-objective permits if hunters did not fill their tags during the limited-entry season.

Applicants who drew a limited-entry permit for the 2011-2012 cougar seasons were required to wait 3 years before applying for another permit. The waiting period did not apply to harvest-objective permit holders. The season limit was one cougar. Females with kittens, or kittens with spots, were not legal to harvest.

Cougar pursuit was allowed in all 49 cougar units during the 2011-2012 season, provided pursuers obtained a valid cougar pursuit permit. An unlimited number of pursuit-only permits, valid on any open unit statewide, were available. Hunters who obtained a limited-entry or harvest-objective permit could pursue cougar on the unit for which the permit was valid.

### **Season Dates**

For the 2011-2012 year, the limited-entry hunting season for limited-entry only units opened November 16, 2011 and closed May 31, 2012. The limited-entry hunting season in split units opened November 16, 2011 and closed February 29, 2012, at which time these units became harvest-objective units from March 5, 2012 through May 31, 2012. The harvest-objective season for harvest-objective only units opened November 16, 2011 and closed November 11, 2012.

Cougar pursuit season dates matched those of the hunt season dates in all 49 units, except for the harvest-objective units, in which units were closed to pursuit from August 14, 2012 through October 31, 2012.

## **METHODS**

All successful hunters were required to have their cougar checked by a Division of Wildlife Resources office or officer within 48 hours of harvest. At that time tooth samples were collected and a permanent tag affixed. Cougar harvest and hunter effort information was also collected. Teeth were sectioned and cementum annuli counted by an independent lab to estimate age of harvested cougar. Cougars aged to be 3-yrs or older were considered adults for the purposes of calculating percent adult females in the harvest. Cougar pursuit information was obtained using a random telephone survey of a statistically valid sample of cougar pursuit permit holders.

Harvest data from depredating cougar were taken from damage reports received from USDA-APHIS Wildlife Services. Livestock operators could kill damaging cougar and were required to have the carcass checked by a Division officer within 48 hours. Harvest information was collected at that time. Other mortality includes DWR control, roadkill, poaching, found dead, etc.

This annual report presents the most complete and accurate summary of cougar harvest data available at the time of publication. Occasionally, we will adjust a previous years' harvest numbers in a subsequent report as more data were made available after publication. This is typically the case with counts of Wildlife Services (depredation) mortality, and only rarely will counts of hunter harvest need adjustment. Also, age data from cougars harvested during the most recent summer or fall seasons are often not available at the time this report is published each year. Therefore, age data and survival information are tentative for the current year, and will be finalized in the following year's report. Where numbers or statistics differ between reports, the most recent annual report should always be the most accurate and up-to-date.

## **RESULTS**

For the 2011-2012 cougar season, 363 limited-entry permits and 815 harvest-objective permits were sold. Total limited-entry permits included 339 unit-specific limited-entry permits, 7 unit-specific convention permits, 15 regional conservation permits, one statewide conservation permit, and one statewide sportsman's permit. A total of 331 cougars were harvested during the 2011-2012 sport season.

There were 33 cougars taken by Wildlife Services during the 2011-2012 season, and 21 other mortalities (roadkill, found dead, DWR control). A total of 777 cougar pursuit permits were sold and 659 pursuers went afield during the 2011-2012 cougar pursuit season. Cougars treed per pursuer was 6.0, with 0.24 cougars treed per day-afield.

Cougar permits sold since the implementation of limited-entry hunts, Utah 1990–2012.

Year	Limited-entry permits				Harvest-objective permits			Total permits
	Resident	Nonresident	Cons/Conv	Total	Resident	Nonresident	Total	
1990	385	142	—	527	—	—	—	527
1991	383	142	—	525	—	—	—	525
1992	383	142	—	525	—	—	—	525
1993	431	160	—	591	—	—	—	591
1994	479	180	—	659	—	—	—	659
1995	559	232	—	791	—	—	—	791
1996	611	261	—	872	—	—	—	872
1997	425	170	—	595	—	—	901	1496
1998	381	128	—	509	472	199	671	1180
1999	337	109	—	446	386	189	575	1021
2000	259	84	—	343	374	170	544	887
2001	206	66	—	272	880	290	1170	1442
2002	228	30	8	266	897	300	1197	1463
2003	326	36	12	374	685	266	951	1325
2004	215	29	20	264	533	209	742	1006
2005	233	30	10	273	841	290	1131	1404
2006	356	38	12	406	464	222	686	1092
2007	313	35	18	366	600	245	845	1211
2008	278	33	26	337	587	238	825	1162
2009	265	33	25	323	543	220	763	1086
2010	256	31	26	313	566	192	758	1071
2011	323	37	23	383	595	190	785	1168
2012	304	35	24	363	613	202	815	1178
Mean	345	95	19	449	602	228	835	1030

\*Combination of limited-entry and harvest-objective hunting initiated in 1997.

Statewide historical cougar harvest statistics, Utah 1971–1989.

Year	Hunters afield	Sport harvest	Hunter-days afield	Hunter-days / hunter	Hunter-days / cougar	Cougars / hunter
1971	207	94	—	—	—	0.45
1972	92	51	—	—	—	0.55
1973	108	66	—	—	—	0.61
1974	176	103	963	5.5	9.3	0.59
1975	286	176	1149	4.0	6.5	0.62
1976	332	167	2379	7.2	14.2	0.50
1977	334	177	2098	6.3	11.9	0.53
1978	408	210	2443	6.0	11.6	0.51
1979	436	265	2312	5.3	8.7	0.61
1980	442	205	3081	7.0	15.0	0.46
1981	411	185	2496	6.1	13.5	0.45
1982	432	205	3526	8.2	17.2	0.47
1983	435	172	3728	8.6	21.7	0.40
1984	484	211	3874	8.0	18.4	0.44
1985	488	182	4839	9.9	26.6	0.37
1986	469	200	3785	8.1	18.9	0.43
1987	486	197	4657	9.6	23.6	0.41
1988	662	247	5690	8.6	23.0	0.37
1989	612	231	5811	9.5	25.2	0.38

Statewide cougar harvest and mortality statistics, Utah 1990–2012.

Year	Limited-entry permits*	Harvest-objective quota	Sport male harvest	Sport female harvest	Total sport harvest	Mean age	% permits filled	% quota filled	% females	% adult females	% ≥ 6 yrs old	Cougar treed / day	Wildlife Services harvest	Other mortality	Total harvest + mortality
1990	527	—	146	71	217	—	41	—	33	—	—	0.41	48	10	275
1991	525	—	184	81	265	—	50	—	31	—	—	0.49	38	22	325
1992	525	—	160	81	241	—	46	—	34	—	—	0.45	34	22	297
1993	591	—	260	112	372	—	63	—	30	—	—	0.49	53	42	467
1994	659	—	216	136	352	—	53	—	39	—	—	0.57	53	10	415
1995	791	—	262	169	431	—	54	—	39	—	—	—	54	24	509
1996	872	—	269	183	452	3.5	52	—	40	—	17	0.48	33	39	524
1997	595	275	297	279	576	3.8	56	88	48	—	20	0.33	40	50	666
1998	509	270	261	231	492	3.2	54	80	47	—	15	0.36	27	23	542
1999	446	230	206	167	373	3.1	49	64	45	—	10	0.30	13	1	387
2000	343	304	258	177	435	2.9	60	81	41	—	10	0.28	25	9	469
2001	272	371	242	207	449	3.3	52	35	46	—	13	0.30	27	20	496
2002	266	339	222	184	406	3.1	58	74	45	—	12	0.21	45	17	468
2003	374	297	251	175	427	3.6	58	77	41	—	13	0.29	53	30	510
2004	266	492	219	229	448	3.4	55	66	51	—	14	0.23	47	28	523
2005	276	527	190	131	321	2.5	45	36	41	—	7	0.17	38	21	380
2006	406	227	202	137	339	3.2	59	45	40	—	9	0.19	35	15	389
2007	366	185	173	117	291	2.9	59	42	40	—	11	0.22	9	25	325
2008	337	162	171	116	287	3.0	53	59	40	—	7	0.27	15	18	320
2009	323	158	207	118	325	3.3	70	61	36	—	10	0.26	22	32	379
2010	314	136	199	104	304	3.2	65	71	34	—	7	0.24	21	35	360
2011	383	116	210	134	344	3.6	69	64	39	30	12	0.25	19	36	399
2012	363	485**	215	116	331	2.9	45‡	68**	35	23	6	0.24	33	21	384
Mean	449	286	218	150	369	3.2	55	63	41	27	11	0.32	34	24	426

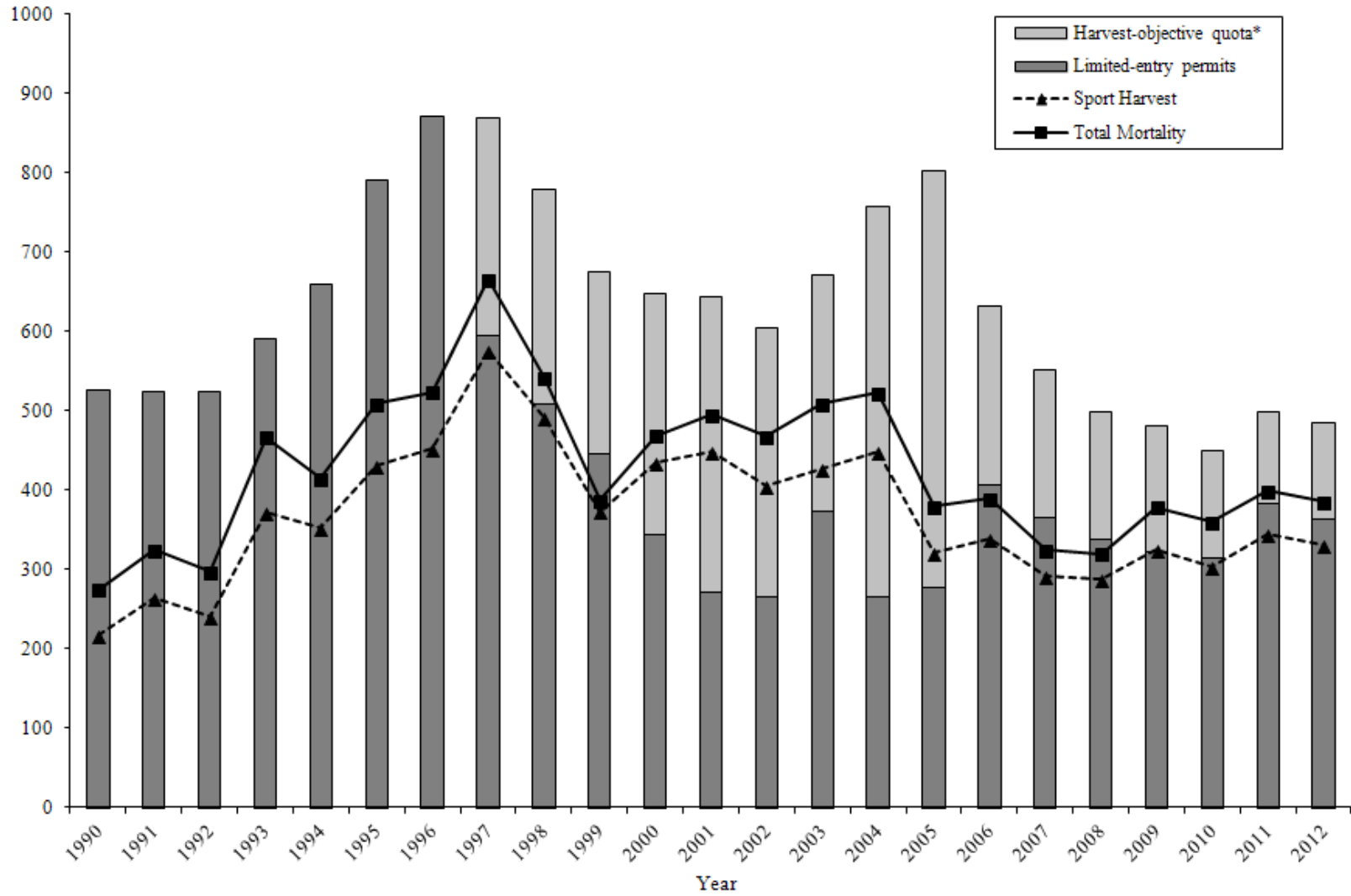
\*Permits include all limited-entry, sportsman, conservation and convention permits.

\*\*Beginning in 2012, harvest-objective quota was calculated as the sum of all the individual management area quotas, and total limited-entry permits were counted as part of this quota.

‡Percent of permits filled during the limited-entry seasons only.



Statewide cougar mortality and harvest objectives, 1990 through 2012.



\*Beginning in 2012, quota was represented in this graph as the sum of all the individual management area quotas, and total limited-entry permits were counted as part of this quota.

Statewide cougar sport harvest statistics by cougar management area and hunt unit, Utah 2012.

Bighorn Sheep Cougar Management Area

Harvest quota: **21** Female harvest subquota: **11**

Unit	Unit type	Limited-entry permits*	Minimum harvest quota	Sport male harvest	Sport female harvest	Total sport harvest	% adult females	Cougar treed / day
Book Cliffs, Rattlesnake Canyon	Harvest-objective	—	7	0	0	0	—	0.00
Kaiparowits	Harvest-objective	—	7	0	0	0	—	0.24
San Rafael	Harvest-objective	—	7	1	1	2	50	—
<b>TOTAL</b>		—	—	1	1	2	50	0.20

\*Includes convention permits.

Book Cliffs Cougar Management Area

Harvest quota: **26** Female harvest subquota: **13**

Unit	Unit type	Limited-entry permits*	Minimum harvest quota	Sport male harvest	Sport female harvest	Total sport harvest	% adult females	Cougar treed / day
Book Cliffs, Bitter Creek	Split	15	—	11	1	12	8	0.40
Nine Mile	Harvest-objective	—	13	7	4	11	27	0.50
<b>TOTAL</b>		15	—	18	5	23	17	0.41

\*Includes convention permits.

Statewide cougar sport harvest statistics by cougar management area and hunt unit, Utah 2012 (continued).

Cache Cougar Management Area

Harvest quota: **43** Female harvest subquota: **11**

Unit	Unit type	Limited-entry permits*	Minimum harvest quota	Sport male harvest	Sport female harvest	Total sport harvest	% adult females	Cougar treed / day
Cache	Limited-entry	15	—	6	0	6	0	0.18
East Canyon	Limited-entry	4	—	1	2	3	0	0.76
East Canyon, Davis	Split	5	—	1	0	1	0	—
Morgan-South Rich	Limited-entry	6	—	3	2	5	20	0.16
Ogden	Limited-entry	15	—	5	4	9	11	0.06
<b>TOTAL</b>		<b>45</b>	<b>—</b>	<b>16</b>	<b>8</b>	<b>24</b>	<b>8</b>	<b>0.21</b>

\*Includes convention permits.

Monroe Cougar Management Area

Harvest quota: **93** Female harvest subquota: **28**

Unit	Unit type	Limited-entry permits*	Minimum harvest quota	Sport male harvest	Sport female harvest	Total sport harvest	% adult females	Cougar treed / day
Beaver	Split	13	—	10	7	17	35	0.33
Fillmore, Pahvant	Split	9	—	16	4	20	20	0.23
Monroe	Split	12	—	4	6	10	30	0.22
Mt Dutton	Split	16	—	3	0	3	0	0.08
Panguitch Lake	Split	11	—	7	3	10	20	0.21
Plateau, Boulder	Split	16	—	2	2	4	50	0.31
Plateau, Fishlake	Split	8	—	8	5	13	31	0.26
Plateau, Thousand Lakes	Split	10	—	1	1	2	50	0.00
<b>TOTAL</b>		<b>95</b>	<b>—</b>	<b>51</b>	<b>28</b>	<b>79</b>	<b>28</b>	<b>0.25</b>

\*Includes convention permits.

Statewide cougar sport harvest statistics by cougar management area and hunt unit, Utah 2012 (continued).

Oquirrh-Stansbury Cougar Management Area

Harvest quota: **33** Female harvest subquota: **8**

Unit	Unit type	Limited-entry permits*	Minimum harvest quota	Sport male harvest	Sport female harvest	Total sport harvest	% adult females	Cougar treed / day
Box Elder, Desert	Limited-entry	6	—	0	1	1	0	0.24
Box Elder, Pilot Mountain	Harvest-objective	—	4	0	1	1	100	0.00
Box Elder, Raft River	Limited-entry	5	—	3	1	4	0	0.22
Fillmore, Oak Creek	Split	8	—	1	3	4	50	0.05
Oquirrh-Stansbury	Limited-entry	4	—	2	0	2	0	0.12
West Desert, Mountain Ranges	Split	4	—	0	0	0	—	0.08
West Desert, Tintic-Vernon	Limited-entry	4	—	2	1	3	33	0.20
<b>TOTAL</b>		<b>31</b>	<b>—</b>	<b>8</b>	<b>7</b>	<b>15</b>	<b>27</b>	<b>0.14</b>

\*Includes convention permits.

Pine Valley Cougar Management Area

Harvest quota: **48** Female harvest subquota: **19**

Unit	Unit type	Limited-entry permits*	Minimum harvest quota	Sport male harvest	Sport female harvest	Total sport harvest	% adult females	Cougar treed / day
Paunsaugunt	Split	9	—	5	0	5	0	0.20
Pine Valley	Split	15	15	9	1	10	10	0.50
Southwest Desert	Split	6	6	3	3	6	33	0.29
Zion	Harvest-objective	—	18	5	8	13	23	0.17
<b>TOTAL</b>		<b>30</b>	<b>—</b>	<b>22</b>	<b>12</b>	<b>34</b>	<b>18</b>	<b>0.25</b>

\*Includes convention permits.

Statewide cougar sport harvest statistics by cougar management area and hunt unit, Utah 2012 (continued).

San Juan Cougar Management Area

Harvest quota: **28** Female harvest subquota: **8**

Unit	Unit type	Limited-entry permits*	Minimum harvest quota	Sport male harvest	Sport female harvest	Total sport harvest	% adult females	Cougar treed / day
Henry Mountains	Harvest-objective	—	5	2	3	5	20	0.21
La Sal	Harvest-objective	—	7	7	2	9	11	0.24
San Juan, Abajo	Split	10	—	5	1	6	17	0.26
San Juan, Elk Ridge	Harvest-objective	—	10	4	2	6	0	0.38
<b>TOTAL</b>		10	—	18	8	26	12	0.26

\*Includes convention permits.

Uintas Cougar Management Area

Harvest quota: **65** Female harvest subquota: **26**

Unit	Unit type	Limited-entry permits*	Minimum harvest quota	Sport male harvest	Sport female harvest	Total sport harvest	% adult females	Cougar treed / day
Chalk Creek/Kamas	Limited-entry	10	—	5	4	9	22	0.26
North Slope, Three Corners	Harvest-objective	—	10	2	0	2	0	0.34
North Slope, West Daggett / Summit	Harvest-objective	—	10	2	0	2	0	0.32
South Slope, Bonanza/Diamond Mtn/Vernal	Harvest-objective	—	—	6	6	12	42	0.25
South Slope, Yellowstone	Split	8	—	2	1	3	33	0.14
Wasatch Mtns, Currant Creek	Limited-entry	7	—	2	1	3	33	0.15
<b>TOTAL</b>		25	—	19	12	31	29	0.25

\*Includes convention permits.

Statewide cougar sport harvest statistics by cougar management area and hunt unit, Utah 2012 (continued).

Wasatch-Manti Cougar Management Area

Harvest quota: **129** Female harvest subquota: **39**

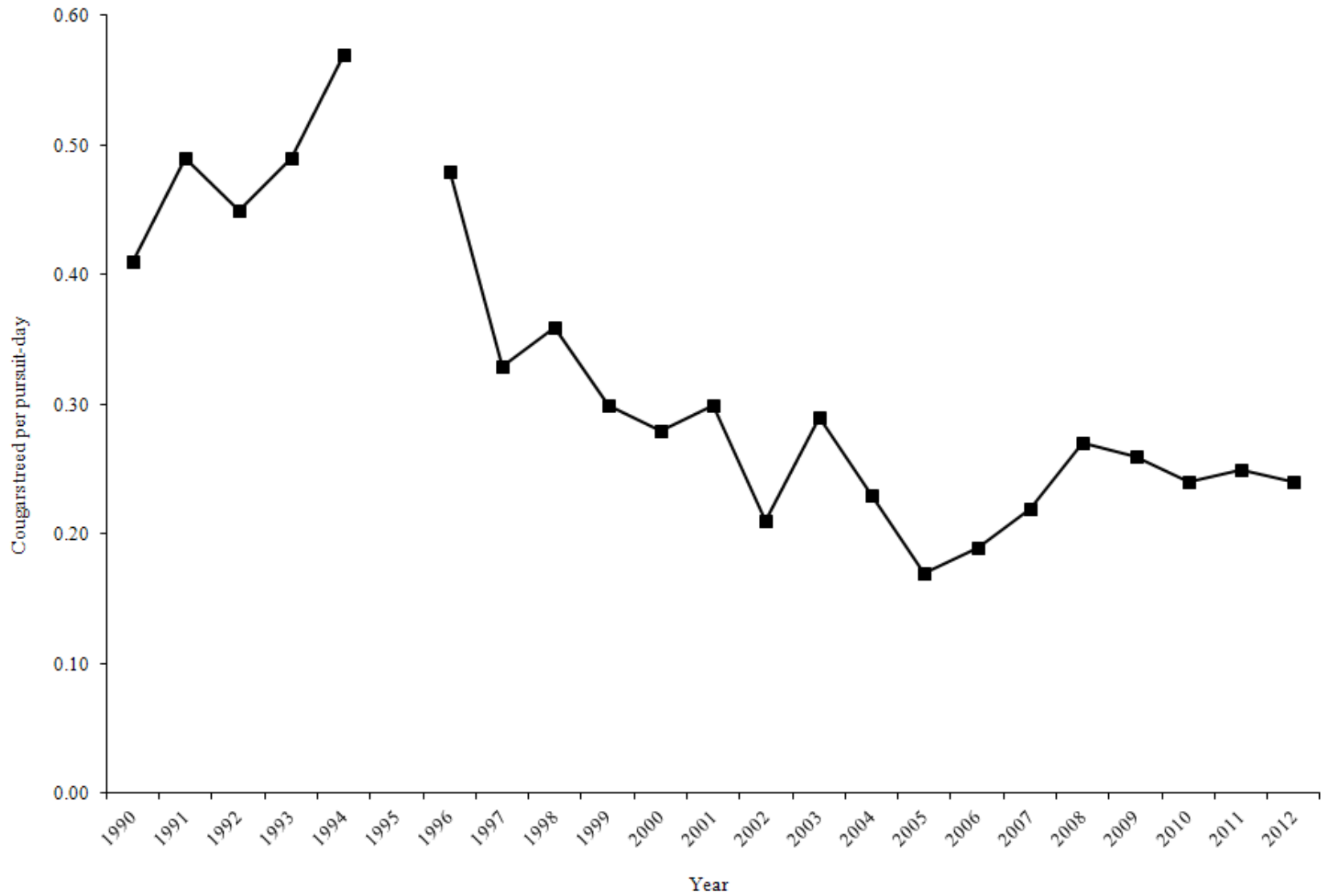
Unit	Unit type	Limited-entry permits*	Minimum harvest quota	Sport male harvest	Sport female harvest	Total sport harvest	% adult females	Cougar treed / day
Central Mtns, Nebo	Split	15	—	9	5	14	29	0.25
Central Mtns, Nebo-West Face	Split	25	24	7	4	11	27	0.25
Central Mtns, Northeast Manti	Split	13	—	2	2	4	50	0.23
Central Mtns, Northwest Manti	Split	13	—	5	3	8	25	0.06
Central Mtns, Southeast Manti	Split	11	—	14	3	17	18	0.47
Central Mtns, Southwest Manti	Split	8	—	14	5	19	16	0.29
Wasatch Mtns, Avintaquin	Harvest-objective	—	13	3	4	7	29	0.16
Wasatch Mtns, Cascade	Harvest-objective	—	12	1	5	6	50	0.07
Wasatch Mtns, Timpanogos	Harvest-objective	—	12	2	0	2	0	0.08
Wasatch Mtns, West	Limited-entry	11	—	5	4	9	33	0.33
<b>TOTAL</b>		<b>96</b>	<b>—</b>	<b>62</b>	<b>35</b>	<b>97</b>	<b>26</b>	<b>0.27</b>

\*Includes convention permits.

Guiding statistics for Utah cougar season, 2002–2012.

Year	Total harvest	Harvest with guide	% harvest with guide
2002	406	285	70.2
2003	427	291	68.1
2004	448	290	64.7
2005	321	202	62.9
2006	339	228	67.3
2007	291	194	66.7
2008	282	159	56.4
2009	325	199	61.2
2010	304	186	61.2
2011	344	196	57.0
2012	331	193	58.3

Statewide cougars treed per pursuit-day, 1990 through 2012.





Statewide cougar pursuit statistics, 1979–2012.

Year	n	Permits	% pursuing cougars	% pursuers treeing cougars	Cougars treed / pursuit-day	Cougars treed / pursuer
1979	60	114	72	83	0.24	4.6
1980	19	91	68	92	0.17	1.6
1981	—	95	—	—	—	—
1982	63	96	87	78	0.40	3.3
1983	41	88	83	76	0.24	3.6
1984	90	126	81	82	0.35	6.2
1985	51	86	86	86	0.33	6.4
1986	49	90	98	90	0.37	6.1
1987	66	141	99	77	0.38	6.0
1988	99	147	89	90	0.38	8.0
1989	123	204	72	90	0.40	8.4
1990	282	355	92	88	0.41	7.8
1991	319	364	90	98	0.49	10.8
1992	364	524	80	96	0.45	4.3
1993	347	570	88	97	0.49	5.9
1994	279	552	87	97	0.57	9.4
1995	—	505	—	—	—	—
1996	378	627	78	98	0.48	10.5
1997	298	638	87	88	0.33	9.1
1998	236	635	86	91	0.36	11.0
1999	275	630	92	74	0.30	3.8
2000	222	545	86	68	0.28	3.1
2001	222	692	84	63	0.30	7.3
2002	—	681	—	—	0.21	—
2003	250	703	80	81	0.29	4.3
2004	199	772	83	73	0.23	3.1
2005	285	703	84	80	0.17	5.5
2006	252	730	88	85	0.19	6.6
2007	208	714	86	74	0.22	6.2
2008	256	880	86	80	0.27	7.4
2009	214	855	86	73	0.26	6.1
2010	224	900	81	73	0.24	4.9
2011	282	909	84	93	0.25	8.1
2012	283	777	85	83	0.24	6.0
Mean	204	486	85	84	0.32	6.3

\*In 1999, the combined cougar/bear pursuit permit was split into separate permits for each species.

Statewide cougar pursuit statistics by unit / subunit, Utah 2012.

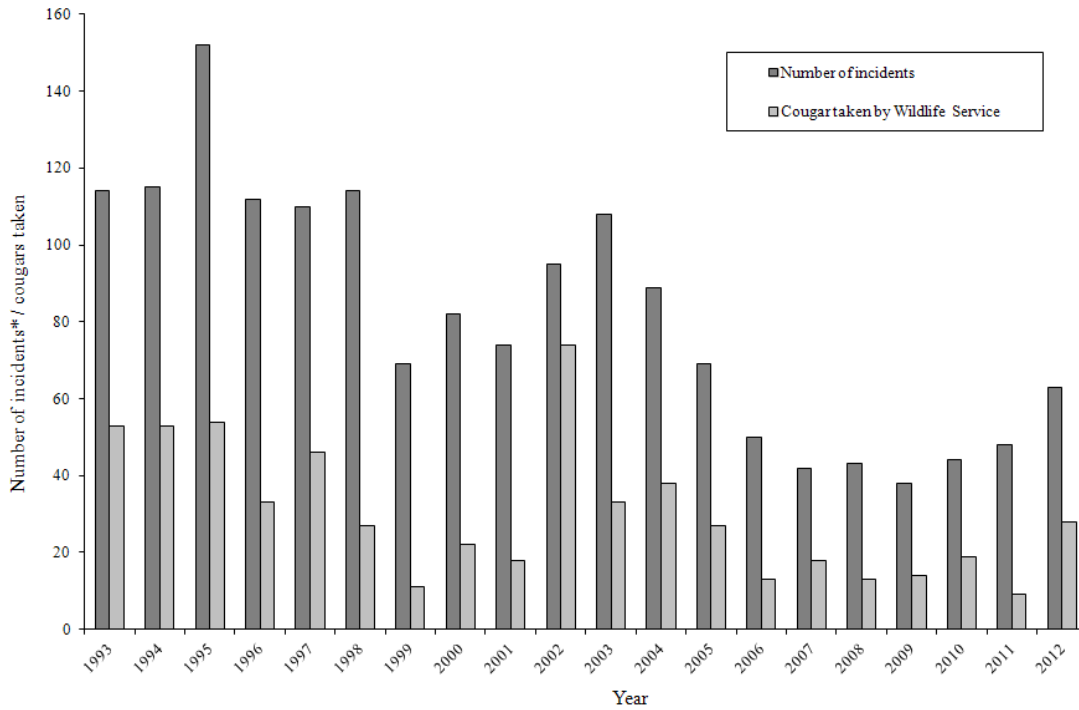
Unit	n	Pursuers afield	Pursuer days afield	Males treed	Females treed	Kittens treed	Unknown treed	Total cougars treed	Cougars treed / day	Cougars treed / pursuer
Beaver	21	58	1054	88	209	47	0	344	0.33	5.9
Book Cliffs, Bitter Creek	17	47	522	58	110	5	36	209	0.40	4.4
Book Cliffs, Rattlesnake Canyon	1	3	8	0	0	0	0	0	0.00	0.0
Box Elder, Desert	9	25	228	11	30	14	0	55	0.24	2.2
Box Elder, Pilot Mountain	1	3	25	0	0	0	0	0	0.00	0.0
Box Elder, Raft River	3	8	82	5	8	5	0	18	0.22	2.3
Cache	18	49	662	33	66	19	3	121	0.18	2.5
Central Mountains, Nebo	11	30	717	36	102	27	14	179	0.25	6.0
Central Mountains, Nebo-West Face	5	14	316	41	36	3	0	80	0.25	5.7
Central Mountains, Northeast Manti	9	25	299	8	30	19	11	68	0.23	2.7
Central Mountains, Northwest Manti	4	11	253	5	8	3	0	16	0.06	1.5
Central Mountains, Southeast Manti	10	27	516	104	110	14	14	242	0.47	9.0
Central Mountains, Southwest Manti	13	36	697	63	129	0	8	200	0.29	5.6
Chalk Creek/Kamas	10	27	453	30	85	0	3	118	0.26	4.4
East Canyon	1	3	110	49	27	8	0	84	0.76	28.0
East Canyon, Davis	0	0	—	—	—	—	—	—	—	—
Fillmore, Oak Creek	3	8	115	3	3	0	0	6	0.05	0.8
Fillmore, Pahvant	7	19	431	49	47	5	0	101	0.23	5.3
Henry Mountains	1	3	14	0	3	0	0	3	0.21	1.0
Kaiparowits	2	5	38	0	3	3	3	9	0.24	1.8
La Sal	7	19	327	41	30	5	3	79	0.24	4.2
Monroe	8	22	209	11	33	3	0	47	0.22	2.1
Morgan-South Rich	7	19	250	8	33	0	0	41	0.16	2.2
Mt Dutton	6	16	269	0	16	5	0	21	0.08	1.3
Nine Mile	3	8	66	8	22	3	0	33	0.50	4.1
North Slope, Three Corners	4	11	151	27	22	0	3	52	0.34	4.7
North Slope, West Daggett/Summit	2	5	66	5	8	8	0	21	0.32	4.2
Ogden	6	16	220	14	0	0	0	14	0.06	0.9

Statewide cougar pursuit statistics by unit / subunit, Utah 2012 (cont.).

Unit	n	Pursuers afield	Pursuer days afield	Males treed	Females treed	Kittens treed	Unknown treed	Total cougars treed	Cougars treed / day	Cougars treed / pursuer
Oquirrh-Stansbury	16	44	1721	55	110	8	41	214	0.12	4.9
Panguitch Lake	10	27	354	22	47	5	0	74	0.21	2.7
Paunsaugunt	9	25	566	22	77	14	0	113	0.20	4.5
Pine Valley	6	16	187	47	30	0	16	93	0.50	5.8
Plateau, Boulder	8	22	275	27	49	8	0	84	0.31	3.8
Plateau, Fishlake	14	38	340	36	52	0	0	88	0.26	2.3
Plateau, Thousand Lakes	2	5	124	0	0	0	0	0	0.00	0.0
San Juan, Abajo	7	19	247	30	30	5	0	65	0.26	3.4
San Juan, Elk Ridge	3	8	80	19	11	0	0	30	0.38	3.8
San Rafael	0	0	—	—	—	—	—	—	—	—
South Slope, Bonanza/Diamond Mtn/Vernal	19	52	832	60	137	3	11	211	0.25	4.1
South Slope, Yellowstone	2	5	22	0	3	0	0	3	0.14	0.6
Southwest Desert	5	14	181	19	33	0	0	52	0.29	3.7
Wasatch Mountains, Avintaquin	8	22	244	22	8	8	0	38	0.16	1.7
Wasatch Mountains, Cascade	3	8	110	0	5	3	0	8	0.07	1.0
Wasatch Mountains, Currant Creek	7	19	313	11	36	0	0	47	0.15	2.5
Wasatch Mountains, Timpanogos	4	11	143	3	5	3	0	11	0.08	1.0
Wasatch Mountains, West	22	60	950	77	181	30	22	310	0.33	5.2
West Desert, Mountain Ranges	2	5	104	3	5	0	0	8	0.08	1.6
West Desert, Tintic-Vernon	11	30	299	36	22	3	0	61	0.20	2.0
Zion	9	25	313	11	33	8	0	52	0.17	2.1
Unknown	22	60	873	88	107	19	19	233	0.27	3.9
Statewide*	240	659	16375	1288	2153	316	206	3963	0.24	6.0

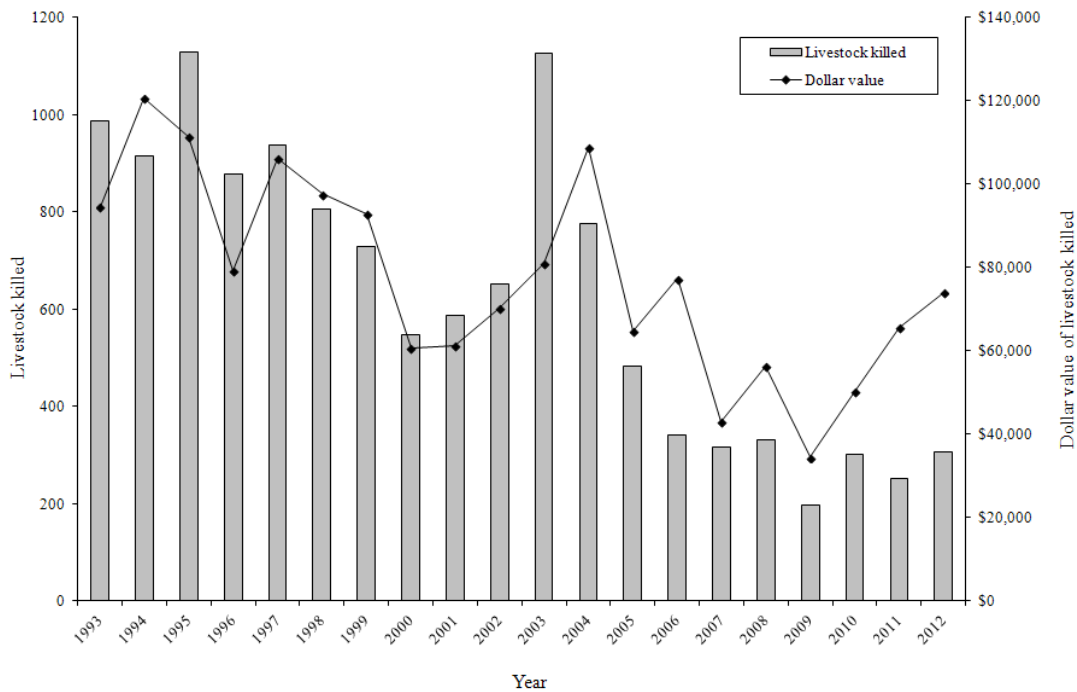
\*Totals for sample size and pursuers afield are not the sum of the columns because pursuers could pursue on multiple units.

Number of livestock depredation incidents and cougars taken by Wildlife Services, Utah 1993–2012.



\*Number of cougars taken by Wildlife Services is based on Fiscal Year, not 2011-2012 cougar hunting season.

Livestock losses due to cougar depredation, Utah 1993–2012.



## **APPENDIX**

### **HISTORIC COUGAR HARVEST BY HUNT UNIT**

Total cougar mortality for unit 1a – Box Elder, Raft River, Utah 1997–2012.

Year	Limited- entry permits*	Harvest- objective quota	Sport male harvest	Sport female harvest	Total sport harvest	Mean age	% permits filled	% quota filled	% females	% adult females	% ≥ 6 yrs old	Cougar treed / day	Wildlife Services harvest	Other mortality	Total harvest + mortality
1997	8	—	3	3	6	3.3	75	—	50	—	7	—	1	0	7
1998	5	—	2	2	4	3.5	80	—	50	—	33	0.55	0	1	5
1999	5	—	1	2	3	2.3	60	—	67	—	0	0.35	2	0	5
2000	—	8	5	3	8	3.2	—	100	38	—	12	0.29	0	0	8
2001	—	8	3	3	6	2.6	—	75	50	—	0	0.46	0	1	7
2002	6	—	4	0	4	2.8	67	—	0	—	0	0.52	0	0	4
2003	6	—	2	3	5	3.0	83	—	60	—	0	0.30	1	0	6
2004	—	10	6	4	10	2.8	—	100	40	—	0	0.14	0	0	10
2005	—	10	4	4	8	2.0	—	80	50	—	0	0.11	0	0	8
2006	8	—	3	1	4	3.0	50	—	25	—	0	0.06	0	0	4
2007	6	—	0	1	1	10.0	17	—	100	—	100	0.16	0	0	1
2008	6	—	2	0	2	4.0	33	—	0	0	0	0.17	0	0	2
2009	7	—	3	1	4	2.8	57	—	25	0	0	0.46	0	0	4
2010	6	—	4	0	4	2.8	67	—	0	0	0	0.75	0	1	5
2011	5	—	4	0	4	4.5	80	—	0	0	33	0.24	0	0	4
2012	5	—	3	1	4	2.3	80	—	25	0	0	0.22	0	0	4
Mean	6	9	3	2	5	3.4	62	89	36	0	11	0.33	0	0	5

\*Includes limited-entry, conservation and convention permits.

Total cougar mortality for unit 1b – Box Elder, Desert, Utah 1990–2012.

Year	Limited-entry permits*	Harvest-objective quota	Sport male harvest	Sport female harvest	Total sport harvest	Mean age	% permits filled	% quota filled	% females	% adult females	% ≥ 6 yrs old	Cougar treed / day	Wildlife Services harvest	Other mortality	Total harvest + mortality
1990	14	—	1	1	2	—	14	—	50	—	—	—	0	0	2
1991	14	—	4	1	5	—	36	—	20	—	—	—	0	0	5
1992	14	—	1	2	3	—	21	—	67	—	—	—	0	0	3
1993	9	—	1	1	2	—	22	—	50	—	—	—	0	0	2
1994	9	—	3	1	4	—	44	—	25	—	—	—	0	0	4
1995	9	—	7	1	8	—	89	—	13	—	—	—	0	0	8
1996	12	—	4	1	5	3.0	42	—	20	—	—	—	0	1	6
1997	8	—	4	3	7	3.5	88	—	43	—	7	—	1	1	9
1998	8	—	2	3	5	5.3	63	—	60	—	33	0.55	0	0	5
1999	8	—	1	4	5	2.3	63	—	80	—	0	0.35	0	0	5
2000	—	12	7	4	11	3.2	—	92	36	—	12	0.29	0	0	11
2001	—	12	8	7	15	2.4	—	125	47	—	13	0.47	4	1	20
2002	—	9	1	3	4	4.0	—	44	75	—	25	0.29	0	0	4
2003	12	—	4	2	6	5.8	50	—	33	—	50	0.46	0	1	7
2004	1	18	5	6	11	4.4	—	61	55	—	38	0.17	0	2	13
2005	—	18	3	3	6	3.6	—	33	50	—	0	0.13	1	0	7
2006	18	—	1	2	3	3.3	17	—	67	—	0	0.03	0	1	4
2007	12	—	3	2	5	2.3	42	—	40	—	0	0.27	0	2	7
2008	12	—	1	3	4	1.8	33	—	75	0	0	0.13	0	0	4
2009	10	—	0	1	1	2.0	10	—	100	0	0	0.28	0	0	1
2010	5	—	0	2	2	4.0	40	—	100	50	50	0.44	0	0	2
2011	6	—	1	1	2	3.0	33	—	50	50	0	0.24	0	0	2
2012	6	—	0	1	1	1.0	17	—	100	0	0	0.24	1	2	4
Mean	10	14	3	2	5	3.2	40	71	55	20	14	0.29	0	0	6

\*Includes limited-entry, conservation and convention permits.

Total cougar mortality for unit 1c – Box Elder, Pilot Mountain, Utah 1998–2012.

Year	Limited-entry permits*	Harvest-objective quota	Sport male harvest	Sport female harvest	Total sport harvest	Mean age	% permits filled	% quota filled	% females	% adult females	% ≥ 6 yrs old	Cougar treed / day	Wildlife Services harvest	Other mortality	Total harvest + mortality
1998	6	3	0	0	0	—	0	0	—	—	—	—	0	0	0
1999	—	3	1	0	1	—	—	33	0	—	—	—	0	0	1
2000	—	3	0	0	0	—	—	0	—	—	—	—	0	0	0
2001	—	3	0	0	0	—	—	0	—	—	—	—	0	0	0
2002	—	4	1	2	3	4.5	—	75	67	—	0	0.00	0	0	3
2003	—	4	1	1	2	—	—	50	50	—	0	0.17	0	0	2
2004	—	4	1	0	1	—	—	25	0	—	0	0.25	0	0	1
2005	—	4	2	0	2	3.0	—	50	0	—	0	0.22	0	0	2
2006	—	4	0	0	0	—	—	0	—	—	—	0.00	0	0	0
2007	—	4	0	0	0	—	—	0	—	—	—	0.00	0	0	0
2008	—	4	0	0	0	—	—	0	—	—	—	—	0	0	0
2009	—	2	0	1	1	2.0	—	50	100	0	0	—	0	0	1
2010	—	2	0	0	0	—	—	0	—	—	—	—	0	0	0
2011	—	2	1	1	2	3.0	—	100	—	0	0	0.23	0	0	2
2012	—	—	0	1	1	4.0	—	—	100	100	0	0.00	0	0	1
Mean	6	3	0	0	1	3.3	0	27	45	33	0	0.11	0	0	1

\*Includes limited-entry, conservation and convention permits.



Total cougar mortality for unit 2 – Cache, Utah 1996–2012.

Year	Limited-entry permits*	Harvest-objective quota	Sport male harvest	Sport female harvest	Total sport harvest	Mean age	% permits filled	% quota filled	% females	% adult females	% ≥ 6 yrs old	Cougar treed / day	Wildlife Services harvest	Other mortality	Total harvest + mortality
1996	20	—	10	6	16	4.0	80	—	38	—	29	—	3	1	20
1997	20	—	8	6	14	3.6	70	—	43	—	25	—	2	1	17
1998	19	—	8	3	11	3.5	58	—	27	—	17	0.47	0	1	12
1999	28	—	7	11	18	1.9	64	—	61	—	0	0.41	0	1	19
2000	—	35	17	19	36	2.5	—	103	53	—	9	0.21	2	0	38
2001	—	35	15	12	27	2.4	—	77	44	—	4	0.26	0	2	29
2002	—	12	2	4	6	2.0	—	50	67	—	0	0.07	1	1	8
2003	15	10	4	11	15	2.0	53	70	73	—	0	0.46	0	0	15
2004	—	19	9	6	15	2.8	—	79	40	—	0	0.06	0	1	16
2005	—	19	8	4	12	1.4	—	63	33	—	0	0.08	0	1	13
2006	19	—	3	5	8	1.4	42	—	63	—	0	0.15	0	2	10
2007	14	—	2	6	8	2.1	57	—	75	—	0	0.26	0	0	8
2008	14	—	7	3	10	2.3	71	—	30	10	0	0.08	1	1	12
2009	14	—	7	5	12	3.2	86	—	42	25	9	0.23	0	5	17
2010	14	—	4	6	10	4.1	71	—	60	40	13	0.16	0	1	11
2011	15	—	7	3	10	2.3	67	—	30	20	0	0.21	1	0	11
2012	15	—	6	0	6	2.0	40	—	0	0	0	0.18	0	2	8
Mean	17	22	7	6	14	2.6	63	74	46	19	6	0.22	1	1	16

\*Includes limited-entry, conservation and convention permits.

Total cougar mortality for unit 3 – Ogden, Utah 1996–2012.

Year	Limited-entry permits*	Harvest-objective quota	Sport male harvest	Sport female harvest	Total sport harvest	Mean age	% permits filled	% quota filled	% females	% adult females	% ≥ 6 yrs old	Cougar treed / day	Wildlife Services harvest	Other mortality	Total harvest + mortality
1996	12	—	3	5	8	4.0	67	—	63	—	25	—	3	1	12
1997	18	—	6	4	10	2.9	56	—	40	—	13	—	0	0	10
1998	12	—	3	5	8	4.1	67	—	63	—	25	0.35	0	0	8
1999	10	—	3	3	6	3.0	60	—	50	—	20	0.18	0	0	6
2000	10	—	3	4	7	2.3	70	—	57	—	14	0.29	0	0	7
2001	—	7	6	2	8	2.5	—	114	25	—	17	0.56	1	2	11
2002	—	7	2	3	5	4.3	—	71	60	—	25	0.18	0	0	5
2003	12	—	5	3	8	4.0	67	—	38	—	0	—	0	0	8
2004	—	19	6	13	19	2.3	—	100	68	—	0	0.23	0	3	22
2005	—	19	1	6	7	2.6	—	37	86	—	14	0.07	0	0	7
2006	19	—	4	2	6	1.6	32	—	33	—	0	0.17	0	0	6
2007	14	—	5	4	9	2.8	64	—	44	—	14	0.28	0	0	9
2008	14	—	2	3	5	2.2	36	—	60	20	0	0.08	0	2	7
2009	14	—	4	3	7	3.4	50	—	43	29	0	0.14	0	0	7
2010	11	—	6	1	7	2.4	55	—	14	0	0	0.14	0	0	7
2011	15	—	3	3	6	3.0	40	—	50	17	0	0.22	0	1	7
2012	15	—	5	4	9	3.0	53	—	44	11	11	0.06	0	0	9
Mean	14	13	4	4	8	3.0	55	81	49	15	11	0.21	0	1	9

\*Includes limited-entry, conservation and convention permits.

Total cougar mortality for unit 4 – Morgan-Rich, Utah 1990–2012.

Year	Limited-entry permits*	Harvest-objective quota	Sport male harvest	Sport female harvest	Total sport harvest	Mean age	% permits filled	% quota filled	% females	% adult females	% ≥ 6 yrs old	Cougar treed / day	Wildlife Services harvest	Other mortality	Total harvest + mortality
1990	13	—	0	0	0	—	0	—	—	—	—	—	0	0	0
1991	13	—	0	0	0	—	0	—	—	—	—	—	0	0	0
1992	13	—	0	0	0	—	0	—	—	—	—	—	0	0	0
1993	13	—	0	0	0	—	0	—	—	—	—	—	0	0	0
1994	14	—	0	0	0	—	0	—	—	—	—	—	0	0	0
1995	14	—	0	0	0	—	0	—	—	—	—	—	0	0	0
1996	7	—	3	2	5	2.5	71	—	40	—	0	—	3	1	9
1997	7	—	2	2	4	4.5	57	—	50	—	0	—	0	0	4
1998	7	—	1	2	3	2.5	43	—	67	—	0	0.42	1	1	5
1999	8	—	3	3	6	3.6	75	—	50	—	40	0.61	0	0	6
2000	12	—	6	4	10	1.6	83	—	40	—	0	0.44	0	0	10
2001	—	10	8	8	16	3.3	—	160	50	—	20	0.63	0	0	16
2002	—	12	4	5	9	2.9	—	75	56	—	13	0.30	0	2	11
2003	16	—	7	5	12	2.5	75	—	42	—	0	0.48	0	0	12
2004	16	—	7	4	11	3.0	69	—	36	—	11	0.26	2	1	14
2005	16	—	4	6	10	2.3	63	—	60	—	11	0.28	1	0	11
2006	11	—	5	6	11	3.3	100	—	55	—	10	0.27	0	0	11
2007	8	—	3	1	4	2.5	50	—	25	—	0	0.23	1	0	5
2008	8	—	2	1	3	2.0	38	—	33	0	0	0.28	0	0	3
2009	5	—	2	1	3	1.7	60	—	33	0	0	0.35	1	1	5
2010	6	—	3	1	4	2.8	67	—	25	0	0	0.20	0	0	4
2011	6	—	5	1	6	3.3	100	—	17	17	17	0.13	1	0	7
2012	6	—	3	2	5	2.8	67	—	40	20	0	0.16	2	0	7
Mean	10	11	3	2	5	2.8	48	118	42	7	7	0.34	1	0	6

\*Includes limited-entry, conservation and convention permits.

Total cougar mortality for unit 5 – East Canyon, Utah 1996–2012.

Year	Limited-entry permits*	Harvest-objective quota	Sport male harvest	Sport female harvest	Total sport harvest	Mean age	% permits filled	% quota filled	% females	% adult females	% ≥ 6 yrs old	Cougar treed / day	Wildlife Services harvest	Other mortality	Total harvest + mortality
1996	8	—	4	1	5	3.7	63	—	20	—	0	—	0	0	5
1997	18	—	6	7	13	2.5	72	—	54	—	9	—	0	3	16
1998	22	—	7	9	16	2.6	73	—	56	—	6	0.30	0	3	19
1999	16	—	6	4	10	1.3	63	—	40	—	0	0.39	0	0	10
2000	18	—	3	6	9	2.3	50	—	67	—	0	0.00	0	1	10
2001	2	10	4	6	10	2.1	0	100	60	—	0	0.40	0	0	10
2002	—	7	4	4	8	2.3	—	114	50	—	0	0.25	0	0	8
2003	10	—	3	3	6	2.5	60	—	50	—	0	0.17	0	0	6
2004	9	—	1	3	4	3.0	44	—	75	—	0	0.08	0	0	4
2005	10	—	3	4	7	2.1	70	—	57	—	0	0.14	0	1	8
2006	8	—	2	2	4	3.0	50	—	50	—	33	0.07	1	0	5
2007	7	—	1	1	2	2.0	29	—	50	—	0	0.79	0	2	4
2008	5	—	2	0	2	2.0	40	—	0	0	0	0.09	0	0	2
2009	5	—	0	0	0	—	0	—	—	—	—	0.00	0	1	1
2010	2	—	1	0	1	5.0	50	—	0	0	0	0.19	0	0	1
2011	4	—	2	1	3	3.3	75	—	33	33	0	0.20	0	0	3
2012	4	—	1	2	3	1.3	75	—	67	0	0	0.76	0	0	3
Mean	9	9	3	3	6	2.6	51	107	46	8	3	0.26	0	1	7

\*Includes limited-entry, conservation and convention permits.

Total cougar mortality for unit 5a – East Canyon, Davis, Utah 2002–2012.

Year	Limited-entry permits*	Harvest-objective quota	Sport male harvest	Sport female harvest	Total sport harvest	Mean age	% permits filled	% quota filled	% females	% adult females	% ≥ 6 yrs old	Cougar treed / day	Wildlife Services harvest	Other mortality	Total harvest + mortality
2002	2	—	2	0	2	1.5	100	—	0	—	0	—	0	0	2
2003	2	—	1	1	2	2.0	100	—	50	—	0	—	0	0	2
2004	2	—	1	1	2	2.0	100	—	50	—	0	—	0	0	2
2005	4	—	1	0	1	3.0	25	—	0	—	0	0.32	0	0	1
2006	—	4	1	3	4	2.0	—	100	75	—	0	0.05	0	1	5
2007	—	5	0	1	1	9.0	—	20	100	—	100	0.10	0	0	1
2008	—	5	0	0	0	—	—	0	—	—	—	0.03	0	0	0
2009	—	5	2	0	2	3.5	—	40	0	0	0	0.00	0	0	2
2010	—	5	2	2	4	3.8	—	80	50	50	0	0.25	0	0	4
2011	5	—	0	0	0	—	0	—	—	—	—	0.02	0	0	0
2012	5	—	1	0	1	3.0	—	—	0	0	0	—	0	0	1
Mean	3	5	1	1	2	3.3	65	48	36	17	11	0.11	0	0	2

\*Includes limited-entry, conservation and convention permits.

Total cougar mortality for unit 6/7 – Chalk Creek/Kamas, Utah 1996–2012.

Year	Limited-entry permits*	Harvest-objective quota	Sport male harvest	Sport female harvest	Total sport harvest	Mean age	% permits filled	% quota filled	% females	% adult females	% ≥ 6 yrs old	Cougar treed / day	Wildlife Services harvest	Other mortality	Total harvest + mortality
1996	10	—	4	3	7	6.0	70	—	43	—	100	—	1	0	8
1997	10	—	2	4	6	3.3	60	—	67	—	0	—	0	1	7
1998	10	—	4	4	8	2.2	80	—	50	—	0	0.39	0	3	11
1999	14	—	7	5	12	2.6	86	—	42	—	11	0.31	0	0	12
2000	—	12	8	4	12	2.5	—	100	33	—	9	0.57	0	0	12
2001	—	12	3	6	9	3.9	—	75	67	—	25	0.62	1	0	10
2002	—	12	6	5	11	3.2	—	92	45	—	18	0.47	6	1	18
2003	17	—	8	7	15	2.7	88	—	47	—	0	0.60	17	2	34
2004	12	—	7	3	10	2.6	83	—	30	—	14	0.33	3	0	13
2005	11	—	5	3	8	2.6	73	—	38	—	0	0.44	14	1	23
2006	10	—	5	4	9	2.2	90	—	44	—	0	0.23	12	0	21
2007	11	—	4	6	10	3.0	91	—	60	—	13	0.64	1	0	11
2008	8	—	4	5	9	3.6	75	—	56	22	13	0.31	2	0	11
2009	8	—	7	4	11	3.4	100	—	36	36	0	0.30	1	2	14
2010	5	—	4	4	8	2.3	80	—	50	25	0	0.67	7	3	18
2011	10	—	4	5	9	3.6	60	—	56	33	25	0.35	3	5	17
2012	10	—	5	4	9	3.3	80	—	44	22	14	0.26	8	1	18
Mean	10	12	5	4	10	3.1	80	89	47	28	14	0.43	5	1	15

\*Includes limited-entry, conservation and convention permits.

Total cougar mortality for unit 8 – North Slope, Utah 1996–2002.

Year	Limited-entry permits*	Harvest-objective quota	Sport male harvest	Sport female harvest	Total sport harvest	Mean age	% permits filled	% quota filled	% females	% adult females	% ≥ 6 yrs old	Cougar treed / day	Wildlife Services harvest	Other mortality	Total harvest + mortality
1996	12	—	2	2	4	6.5	33	—	50	—	75	—	0	1	5
1997	3	12	9	3	12	3.8	—	—	25	—	23	—	0	1	13
1998	2	12	4	4	8	4.9	—	—	50	—	25	0.39	0	0	8
1999	2	12	5	1	6	3.8	—	—	17	—	17	0.31	0	0	6
2000	—	12	6	5	11	3.8	—	92	45	—	17	0.57	0	0	11
2001	—	14	8	6	14	3.2	—	100	43	—	8	0.32	0	0	14
2002	—	14	9	6	15	3.6	—	107	40	—	7	0.35	0	0	15
Mean	5	13	6	4	10	4.2	33	100	39	—	25	0.39	0	0	10

\*Includes limited-entry, conservation and convention permits.

Total cougar mortality for unit 8ab – North Slope, West Daggett/Summit, Utah 2003–2012.

Year	Limited- entry permits*	Harvest- objective quota	Sport male harvest	Sport female harvest	Total sport harvest	Mean age	% permits filled	% quota filled	% females	% adult females	% ≥ 6 yrs old	Cougar treed / day	Wildlife Services harvest	Other mortality	Total harvest + mortality
2003	—	10	4	3	7	4.0	—	70	43	—	40	0.18	0	0	7
2004	—	10	3	4	7	3.0	—	70	57	—	0	0.29	1	0	8
2005	—	10	1	2	3	2.0	—	30	67	—	0	0.07	0	0	3
2006	—	10	1	2	3	3.0	—	30	67	—	0	0.30	0	0	3
2007	—	7	1	0	1	3.0	—	14	0	—	0	0.18	0	0	1
2008	—	5	1	1	2	2.0	—	40	50	0	0	0.29	0	0	2
2009	—	10	5	4	9	2.1	—	90	44	11	0	0.00	0	0	9
2010	10	—	3	0	3	2.3	30	—	0	0	0	0.29	0	0	3
2011	—	10	2	3	5	3.0	—	50	60	20	0	0.00	0	0	5
2012	—	—	2	0	2	3.0	—	—	0	0	0	0.32	0	0	2
Mean	10	9	2	2	4	2.7	30	49	39	6	4	0.19	0	0	4

\*Includes limited-entry, conservation and convention permits.



Total cougar mortality for unit 8c – North Slope, Three Corners, Utah 2003–2012.

Year	Limited-entry permits*	Harvest-objective quota	Sport male harvest	Sport female harvest	Total sport harvest	Mean age	% permits filled	% quota filled	% females	% adult females	% ≥ 6 yrs old	Cougar treed / day	Wildlife Services harvest	Other mortality	Total harvest + mortality
2003	—	10	1	2	3	3.5	—	30	67	—	0	—	1	0	4
2004	—	10	1	1	2	4.5	—	20	50	—	50	0.20	0	0	2
2005	—	10	1	1	2	2.0	—	20	50	—	0	0.03	1	0	3
2006	—	10	1	1	2	2.5	—	20	50	—	0	0.00	0	0	2
2007	—	7	4	0	4	3.3	—	57	0	—	0	0.37	0	0	4
2008	—	5	2	2	4	2.8	—	80	50	25	0	0.41	0	0	4
2009	—	10	1	0	1	3.0	—	10	0	0	0	0.72	0	0	1
2010	7	—	1	0	1	2.0	14	—	0	0	0	0.23	0	0	1
2011	—	10	3	3	6	3.8	—	60	50	50	0	0.17	0	0	6
2012	—	—	2	0	2	2.0	—	—	0	0	0	0.34	0	0	2
Mean	7	9	2	1	3	2.9	14	37	32	15	5	0.27	0	0	3

\*Includes limited-entry, conservation and convention permits.

Total cougar mortality for unit 9 – South Slope, Utah 1990–2001.

Year	Limited-entry permits*	Harvest-objective quota	Sport male harvest	Sport female harvest	Total sport harvest	Mean age	% permits filled	% quota filled	% females	% adult females	% ≥ 6 yrs old	Cougar treed / day	Wildlife Services harvest	Other mortality	Total harvest + mortality
1990	56	—	13	7	20	—	36	—	35	—	—	—	4	0	24
1991	56	—	18	12	30	—	54	—	40	—	—	—	0	1	31
1992	56	—	13	15	28	—	50	—	54	—	—	—	1	1	30
1993	57	—	14	14	28	—	49	—	50	—	—	—	2	0	30
1994	60	—	22	10	32	—	53	—	31	—	—	—	0	2	34
1995	63	—	24	10	34	—	54	—	29	—	—	—	1	2	37
1996	75	—	27	13	40	4.4	53	—	33	—	32	—	0	2	42
1997	62	—	12	9	21	3.6	34	—	43	—	11	—	1	1	23
1998	40	—	8	7	15	3.1	38	—	47	—	8	0.29	6	0	21
1999	35	—	4	6	10	3.4	29	—	60	—	9	0.26	1	0	11
2000	35	—	4	1	5	3.2	14	—	20	—	0	0.26	1	1	7
2001	35	—	7	6	13	4.2	37	—	46	—	23	0.31	0	1	14
Mean	53	—	14	9	23	3.7	42	—	41	—	14	0.28	1	1	25

\*Includes limited-entry, conservation and convention permits.

Total cougar mortality for unit 9a – South Slope, Yellowstone, Utah 2002–2012.

Year	Limited-entry permits*	Harvest-objective quota	Sport male harvest	Sport female harvest	Total sport harvest	Mean age	% permits filled	% quota filled	% females	% adult females	% ≥ 6 yrs old	Cougar treed / day	Wildlife Services harvest	Other mortality	Total harvest + mortality
2002	8	—	1	1	2	3.0	25	—	50	—	22	0.14	2	0	4
2003	8	—	2	1	3	5.3	38	—	33	—	33	0.24	0	0	3
2004	—	10	1	5	6	2.5	—	60	83	—	0	0.11	0	0	6
2005	—	10	1	0	1	2.0	—	10	0	—	0	0.18	0	0	1
2006	10	—	2	0	2	3.5	20	—	0	—	0	0.05	0	0	2
2007	—	6	4	0	4	2.0	—	67	0	—	0	0.19	0	0	4
2008	—	6	3	0	3	2.7	—	50	0	0	0	0.12	1	1	5
2009	—	6	4	0	4	3.5	—	67	0	0	25	0.16	0	1	5
2010	—	6	5	1	6	2.2	—	100	17	0	0	0.05	0	1	7
2011	8	—	2	1	3	3.0	38	—	33	33	0	0.19	1	3	7
2012	8	—	2	1	3	4.7	—	—	33	33	67	0.14	0	0	3
Mean	8	7	2	1	3	3.1	30	59	23	13	13	0.14	0	1	4

\*Includes limited-entry, conservation and convention permits.

Total cougar mortality for unit 9bcd – South Slope, Vernal/Diamond/Bonanza, Utah 2002–2012.

Year	Limited-entry permits*	Harvest-objective quota	Sport male harvest	Sport female harvest	Total sport harvest	Mean age	% permits filled	% quota filled	% females	% adult females	% ≥ 6 yrs old	Cougar treed / day	Wildlife Services harvest	Other mortality	Total harvest + mortality
2002	26	—	7	3	10	3.7	38	—	30	—	20	0.06	2	0	12
2003	25	—	5	4	9	5.0	36	—	44	—	40	0.20	3	2	14
2004	—	9	3	6	9	2.7	—	100	67	—	0	—	0	0	9
2005	—	20	5	4	9	1.8	—	45	44	—	0	0.03	0	0	9
2006	—	20	6	5	11	2.8	—	55	45	—	9	0.12	2	0	13
2007	—	20	7	1	8	3.8	—	40	13	—	20	0.24	0	0	8
2008	—	15	8	5	13	3.2	—	87	38	8	8	0.50	—	—	13
2009	—	15	7	3	10	3.1	—	67	30	20	13	0.56	0	0	10
2010	—	15	13	3	16	2.8	—	107	19	6	8	0.15	0	1	17
2011	20	—	0	1	1	6.0	5	—	100	100	100	0.22	0	0	1
2012	—	—	6	6	12	3.4	—	—	50	42	0	0.25	2	0	14
Mean	24	16	6	4	10	3.5	26	71	44	35	20	0.23	1	0	11

\*Includes limited-entry, conservation and convention permits.

Total cougar mortality for unit 10 – Book Cliffs, Utah 1990–2002.

Year	Limited-entry permits*	Harvest-objective quota	Sport male harvest	Sport female harvest	Total sport harvest	Mean age	% permits filled	% quota filled	% females	% adult females	% ≥ 6 yrs old	Cougar treed / day	Wildlife Services harvest	Other mortality	Total harvest + mortality
1990	18	—	5	4	9	—	50	—	44	—	—	—	2	0	11
1991	18	—	11	2	13	—	72	—	15	—	—	—	0	1	14
1992	18	—	2	4	6	—	33	—	67	—	—	—	4	0	10
1993	18	—	11	1	12	—	67	—	8	—	—	—	1	0	13
1994	22	—	8	3	11	—	50	—	27	—	—	—	0	0	11
1995	26	—	10	4	14	—	54	—	29	—	—	—	1	1	16
1996	40	—	11	7	18	4.2	45	—	39	—	18	—	0	1	19
1997	—	30	14	14	28	4.5	—	93	50	—	37	—	3	0	31
1998	—	30	12	9	21	4.4	—	70	43	—	21	0.38	0	1	22
1999	—	30	12	9	21	3.7	—	70	43	—	11	0.19	1	1	23
2000	—	30	11	10	21	2.9	—	70	48	—	6	0.19	0	1	22
2001	—	30	10	13	23	3.6	—	77	57	—	13	0.19	0	0	23
2002	—	30	14	8	22	3.3	—	73	36	—	20	0.25	1	0	23
Mean	23	30	10	7	17	3.8	53	76	39	—	18	0.24	1	0	18

\*Includes limited-entry, conservation and convention permits.

Total cougar mortality for unit 10a – Book Cliffs, Bitter Creek, Utah 2003–2012.

Year	Limited- entry permits*	Harvest- objective quota	Sport male harvest	Sport female harvest	Total sport harvest	Mean age	% permits filled	% quota filled	% females	% adult females	% ≥ 6 yrs old	Cougar treed / day	Wildlife Services harvest	Other mortality	Total harvest + mortality
2003	—	30	14	5	19	4.2	—	63	26	—	33	0.21	0	0	19
2004	—	30	10	6	16	2.9	—	53	38	—	8	0.25	2	0	18
2005	—	30	4	1	5	1.7	—	17	20	—	0	0.13	1	0	6
2006	20	—	7	1	8	2.7	40	—	13	—	0	0.14	3	1	12
2007	13	—	3	1	4	1.0	31	—	25	—	0	0.27	0	0	4
2008	14	—	8	2	10	3.1	71	—	20	20	14	0.30	0	0	10
2009	14	—	11	3	14	3.2	100	—	21	14	9	0.19	0	0	14
2010	15	—	7	3	10	3.5	60	—	30	10	11	0.22	0	0	10
2011	15	—	4	3	7	3.4	47	—	43	14	0	0.25	0	0	7
2012	15	—	11	1	12	3.3	—	—	8	8	8	0.40	0	0	12
Mean	15	30	8	3	11	2.9	58	44	24	13	8	0.24	1	0	11

\*Includes limited-entry, conservation and convention permits.

Total cougar mortality for unit 10b – Book Cliffs, Rattlesnake Canyon, Utah 2003–2012.

Year	Limited-entry permits*	Harvest-objective quota	Sport male harvest	Sport female harvest	Total sport harvest	Mean age	% permits filled	% quota filled	% females	% adult females	% ≥ 6 yrs old	Cougar treed / day	Wildlife Services harvest	Other mortality	Total harvest + mortality
2003	—	4	0	0	0	—	—	0	—	—	—	—	3	0	3
2004	—	4	1	1	2	4.5	—	50	50	—	50	—	0	0	2
2005	—	4	1	0	1	—	—	25	0	—	—	0.04	0	0	1
2006	—	4	0	0	0	—	—	0	—	—	—	0.00	3	0	3
2007	—	4	0	0	0	—	—	0	—	—	—	0.00	0	0	0
2008	—	4	0	0	0	—	—	0	—	—	—	0.05	0	0	0
2009	—	4	1	0	1	4.0	—	25	0	0	0	0.18	0	0	1
2010	—	4	0	0	0	—	—	0	—	—	—	—	0	1	1
2011	—	2	2	0	2	3.5	—	100	0	0	0	0.16	0	0	2
2012	—	—	0	0	0	—	—	—	—	—	—	0.00	0	0	0
Mean	—	4	1	0	1	4.0	—	22	13	0	17	0.07	1	0	1

\*Includes limited-entry, conservation and convention permits.

Total cougar mortality for unit 11a – Nine Mile, Anthro, Utah 1990–2007.

Year	Limited-entry permits*	Harvest-objective quota	Sport male harvest	Sport female harvest	Total sport harvest	Mean age	% permits filled	% quota filled	% females	% adult females	% ≥ 6 yrs old	Cougar treed / day	Wildlife Services harvest	Other mortality	Total harvest + mortality
1990	12	—	4	0	4	—	33	—	0	—	—	—	2	0	6
1991	12	—	5	3	8	—	67	—	38	—	—	—	0	0	8
1992	12	—	2	2	4	—	33	—	50	—	—	—	0	1	5
1993	12	—	3	3	6	—	50	—	50	—	—	—	0	2	8
1994	13	—	4	1	5	—	38	—	20	—	—	—	1	0	6
1995	13	—	5	4	9	—	69	—	44	—	—	—	1	2	12
1996	13	—	3	1	4	5.0	31	—	25	—	44	—	0	0	4
1997	13	—	2	3	5	3.8	38	—	60	—	20	—	0	0	5
1998	5	—	1	1	2	3.0	40	—	50	—	13	0.41	0	0	2
1999	5	—	1	0	1	2.9	20	—	0	—	0	0.25	0	0	1
2000	5	—	2	2	4	3.4	80	—	50	—	13	0.24	0	0	4
2001	—	6	2	1	3	3.7	—	50	33	—	0	0.43	0	1	4
2002	—	5	3	2	5	3.8	—	100	40	—	25	0.16	0	0	5
2003	—	5	1	1	2	5.0	—	40	50	—	0	0.02	0	1	3
2004	—	5	2	0	2	4.5	—	40	0	—	50	0.10	0	0	2
2005	—	5	1	0	1	—	—	20	0	—	—	0.03	0	0	1
2006	5	—	0	0	0	—	0	—	—	—	—	0.06	0	0	0
2007	3	—	0	2	2	3.0	67	—	100	—	0	0.33	0	0	2
Mean	9	5	2	1	4	3.8	44	50	36	—	17	0.20	0	0	4

\*Includes limited-entry, conservation and convention permits.



Total cougar mortality for unit 11bc – Nine Mile, Range Creek, Utah 1990–2007.

Year	Limited-entry permits*	Harvest-objective quota	Sport male harvest	Sport female harvest	Total sport harvest	Mean age	% permits filled	% quota filled	% females	% adult females	% ≥ 6 yrs old	Cougar treed / day	Wildlife Services harvest	Other mortality	Total harvest + mortality
1990	16	—	5	3	8	—	50	—	38	—	—	—	0	0	8
1991	16	—	5	1	6	—	38	—	17	—	—	—	0	0	6
1992	16	—	6	1	7	—	44	—	14	—	—	—	0	1	8
1993	16	—	6	0	6	—	38	—	0	—	—	—	1	0	7
1994	16	—	5	4	9	—	56	—	44	—	—	—	0	0	9
1995	16	—	8	4	12	—	75	—	33	—	—	—	0	0	12
1996	16	—	6	1	7	3.6	44	—	14	—	44	—	0	0	7
1997	—	20	9	12	21	3.2	—	105	57	—	20	—	2	1	24
1998	—	16	7	7	14	3.5	—	88	50	—	13	0.41	1	0	15
1999	—	16	11	4	15	2.9	—	94	27	—	0	0.25	0	0	15
2000	—	16	7	9	16	3.4	—	100	56	—	13	0.24	0	0	16
2001	—	16	10	7	17	2.2	—	106	41	—	0	0.33	0	1	18
2002	—	16	11	5	16	2.6	—	100	31	—	6	0.06	1	0	17
2003	—	12	9	6	15	2.4	—	125	40	—	0	0.11	0	0	15
2004	—	25	4	8	12	5.3	—	48	67	—	42	0.06	1	2	15
2005	—	30	4	3	7	2.4	—	23	43	—	0	0.14	0	0	7
2006	—	20	5	4	9	3.1	—	45	44	—	25	0.07	0	1	10
2007	—	15	4	2	6	3.4	—	40	33	—	20	0.09	0	0	6
Mean	16	18	7	5	11	3.2	49	79	36	—	15	0.18	0	0	12

\*Includes limited-entry, conservation and convention permits.

2003, 2004, and 2006 unit was called 11b, Nine Mile, Range Creek North.

Total cougar mortality for unit 11c – Nine Mile, Range Creek South, Utah 2003–2004.

Year	Limited-entry permits*	Harvest-objective quota	Sport male harvest	Sport female harvest	Total sport harvest	Mean age	% permits filled	% quota filled	% females	% adult females	% ≥ 6 yrs old	Cougar treed / day	Wildlife Services harvest	Other mortality	Total harvest + mortality
2003	—	8	2	2	4	4.0	—	50	50	—	0	0.17	1	0	5
2004	—	10	2	3	5	—	—	50	60	—	—	—	0	0	5
Mean	—	9	2	3	5	4.0	—	50	55	—	0	0.17	1	0	5

\*Includes limited-entry, conservation and convention permits.

Unit was recombined with unit 11b in 2005.

Total cougar mortality for unit 11 – Nine Mile, Utah 2008–2012.

Year	Limited-entry permits*	Harvest-objective quota	Sport male harvest	Sport female harvest	Total sport harvest	Mean age	% permits filled	% quota filled	% females	% adult females	% ≥ 6 yrs old	Cougar treed / day	Wildlife Services harvest	Other mortality	Total harvest + mortality
2008	—	12	4	4	8	2.0	—	67	50	13	0	0.06	1	0	9
2009	—	12	7	6	13	3.5	—	108	46	38	15	0.11	1	0	14
2010	—	12	9	3	12	3.1	—	100	25	17	0	0.16	0	0	12
2011	—	12	5	1	6	3.5	—	50	17	17	0	0.37	0	0	6
2012	—	—	7	4	11	3.3	—	—	36	27	22	0.50	0	0	11
Mean	—	12	6	4	10	3.1	—	81	35	22	8	0.24	0	0	10

\*Includes limited-entry, conservation and convention permits.

All subunits were recombined in 2008.

Total cougar mortality for unit 12 – San Rafael, Utah 1990–2012.

Year	Limited-entry permits*	Harvest-objective quota	Sport male harvest	Sport female harvest	Total sport harvest	Mean age	% permits filled	% quota filled	% females	% adult females	% ≥ 6 yrs old	Cougar treed / day	Wildlife Services harvest	Other mortality	Total harvest + mortality
1990	4	—	0	0	0	—	0	—	—	—	—	—	0	0	0
1991	4	—	1	0	1	—	25	—	0	—	—	—	0	0	1
1992	4	—	0	0	0	—	0	—	—	—	—	—	0	0	0
1993	4	—	0	0	0	—	0	—	—	—	—	—	0	0	0
1994	4	—	1	0	1	—	25	—	0	—	0	—	0	0	1
1995	4	—	0	0	0	—	0	—	—	—	—	—	0	0	0
1996	4	—	1	0	1	1.0	25	—	0	—	0	—	0	0	1
1997	4	—	0	0	0	—	0	—	—	—	—	—	0	0	0
1998	0	—	0	0	0	—	—	—	—	—	—	0.34	0	1	1
1999	—	2	2	0	2	5.5	—	100	0	—	50	0.19	0	0	2
2000	—	7	0	0	0	—	—	0	—	—	—	0.21	1	1	2
2001	—	7	1	2	3	7.0	—	43	67	—	100	0.60	2	1	6
2002	—	7	0	0	0	—	—	0	—	—	—	—	2	0	2
2003	—	7	2	0	2	2.0	—	29	0	—	50	0.00	1	0	3
2004	—	7	2	1	3	2.0	—	43	33	—	0	0.25	0	0	3
2005	—	7	0	0	0	—	—	0	—	—	—	0.10	0	0	0
2006	—	5	0	0	0	—	—	0	—	—	—	—	0	0	0
2007	—	4	1	0	1	—	—	25	0	—	—	0.60	0	0	1
2008	—	4	0	1	1	7.0	—	25	100	100	0	0.05	0	1	2
2009	—	4	1	0	1	3.0	—	25	0	0	0	0.03	0	0	1
2010	—	4	1	0	1	2.0	—	25	0	0	0	0.09	0	0	1
2011	—	3	2	1	3	3.7	—	100	33	33	0	0.12	0	0	3
2012	—	—	0	0	0	—	—	—	—	—	—	—	1	0	1
Mean	4	5	1	0	1	3.7	9	32	19	33	20	0.22	0	0	1

\*Includes limited-entry, conservation and convention permits.

Total cougar mortality for unit 13a – La Sal, La Sal Mountains, Utah 1990–2006.

Year	Limited-entry permits*	Harvest-objective quota	Sport male harvest	Sport female harvest	Total sport harvest	Mean age	% permits filled	% quota filled	% females	% adult females	% ≥ 6 yrs old	Cougar treed / day	Wildlife Services harvest	Other mortality	Total harvest + mortality
1990	8	—	0	0	0	—	0	—	—	—	—	—	0	0	0
1991	8	—	2	0	2	—	25	—	0	—	—	—	1	0	3
1992	8	—	1	1	2	—	25	—	50	—	—	—	1	0	3
1993	8	—	3	1	4	—	50	—	25	—	—	—	0	3	7
1994	9	—	3	1	4	—	44	—	25	—	—	—	0	0	4
1995	12	—	2	0	2	—	17	—	0	—	—	—	0	0	2
1996	12	—	3	2	5	2.9	42	—	40	—	0	—	1	0	6
1997	—	10	1	0	1	2.5	—	10	0	—	0	—	0	2	3
1998	—	10	3	0	3	2.3	—	30	0	—	0	0.34	0	0	3
1999	—	10	1	2	3	2.0	—	30	67	—	0	0.23	0	0	3
2000	—	10	4	3	7	2.9	—	70	43	—	0	0.36	0	0	7
2001	—	7	2	0	2	2.5	—	29	0	—	0	0.67	0	1	3
2002	—	7	5	0	5	2.4	—	71	0	—	0	0.14	4	0	9
2003	—	7	3	3	6	4.3	—	86	50	—	33	0.36	0	0	6
2004	—	15	3	0	3	2.5	—	20	0	—	0	0.10	4	0	7
2005	—	15	0	0	0	—	—	0	—	—	—	0.16	2	0	2
2006	—	10	1	0	1	7.0	—	10	0	—	100	0.24	0	1	2
Mean	9	10	2	1	3	3.1	29	36	20	—	13	0.29	1	0	4

\*Includes limited-entry, conservation and convention permits.

Total cougar mortality for unit 13b – La Sal, Dolores Triangle, Utah 1994–2006.

Year	Limited-entry permits*	Harvest-objective quota	Sport male harvest	Sport female harvest	Total sport harvest	Mean age	% permits filled	% quota filled	% females	% adult females	% ≥ 6 yrs old	Cougar treed / day	Wildlife Services harvest	Other mortality	Total harvest + mortality
1994	5	—	1	0	1	—	20	—	0	—	—	—	0	0	1
1995	5	—	0	0	0	—	0	—	—	—	—	—	0	0	0
1996	5	—	2	0	2	4.0	40	—	0	—	—	—	0	0	2
1997	—	5	0	0	0	—	—	0	—	—	—	—	0	0	0
1998	—	5	0	0	0	—	—	0	—	—	—	0.34	0	0	0
1999	5	—	0	0	0	—	0	—	—	—	—	0.23	0	0	0
2000	—	5	0	0	0	—	—	0	—	—	—	0.36	0	0	0
2001	—	5	0	0	0	—	—	0	—	—	—	—	0	0	0
2002	—	5	0	0	0	—	—	0	—	—	—	—	0	0	0
2003	—	5	0	0	0	—	—	0	—	—	—	0.12	0	0	0
2004	—	10	0	0	0	—	—	0	—	—	—	0.00	1	0	1
2005	—	10	1	0	1	—	—	10	0	—	—	1.15	0	0	1
2006	—	5	0	0	0	—	—	0	—	—	—	—	0	1	1
Mean	5	6	0	0	0	4.0	15	1	0	—	—	0.37	0	0	0

\*Includes limited-entry, conservation and convention permits.

Total cougar mortality for unit 13 – La Sal, La Sal Mountains, Utah 2007–2012.

Year	Limited-entry permits*	Harvest-objective quota	Sport male harvest	Sport female harvest	Total sport harvest	Mean age	% permits filled	% quota filled	% females	% adult females	% ≥ 6 yrs old	Cougar treed / day	Wildlife Services harvest	Other mortality	Total harvest + mortality
2007	—	10	4	2	6	2.7	—	60	33	—	0	0.28	0	1	7
2008	—	10	0	1	1	1.0	—	10	100	0	0	0.31	0	1	2
2009	—	7	2	2	4	5.0	—	57	50	50	33	0.42	0	1	5
2010	—	7	5	1	6	3.7	—	86	17	17	0	0.14	0	0	6
2011	—	5	3	2	5	4.0	—	100	40	40	0	0.40	0	0	5
2012	—	—	7	2	9	2.5	—	—	22	11	0	0.24	0	0	9
Mean	—	8	4	2	5	3.1	—	63	44	24	6	0.30	0	1	6

\*Includes limited-entry, conservation and convention permits.  
All subunits were recombined in 2007.

Total cougar mortality for unit 14 – San Juan, Utah 1990–2001, 2006–2009.

Year	Limited-entry permits*	Harvest-objective quota	Sport male harvest	Sport female harvest	Total sport harvest	Mean age	% permits filled	% quota filled	% females	% adult females	% ≥ 6 yrs old	Cougar treed / day	Wildlife Services harvest	Other mortality	Total harvest + mortality
1990	13	—	2	0	2	—	15	—	0	—	—	—	0	0	2
1991	13	—	3	2	5	—	38	—	40	—	—	—	0	0	5
1992	13	—	7	4	11	—	85	—	36	—	—	—	0	0	11
1993	13	—	2	2	4	—	31	—	50	—	—	—	0	1	5
1994	15	—	3	3	6	—	40	—	50	—	—	—	0	0	6
1995	24	—	7	2	9	—	38	—	22	—	—	—	0	0	9
1996	24	—	5	5	10	3.8	42	—	50	—	20	—	0	0	10
1997	—	20	13	8	21	5.1	—	105	38	—	33	—	0	1	22
1998	—	20	12	9	21	2.8	—	105	43	—	0	0.85	0	0	21
1999	—	20	6	4	10	3.1	—	50	40	—	0	0.37	0	0	10
2000	—	20	12	8	20	3.0	—	100	40	—	6	1.19	0	1	21
2001	—	25	9	8	17	3.7	—	68	47	—	20	0.48	0	0	17
2006	—	30	9	8	17	2.9	—	57	47	—	0	0.23	0	0	17
2007	—	25	10	5	16	2.6	—	64	33	—	8	0.13	0	0	16
2008	—	25	10	9	19	2.3	—	76	47	—	0	0.35	0	0	19
2009	—	20	8	8	16	3.1	—	80	50	—	7	0.47	0	1	17
Mean	16	23	7	5	13	3.2	41	78	40	—	9	0.51	0	0	13

\*Includes limited-entry, conservation and convention permits.  
 Unit 14 was split into subunits 14a and 14b from 2002 to 2005.

Total cougar mortality for unit 14a – San Juan, Abajo Mountains, Utah 2002–2005, 2010–2012.

Year	Limited-entry permits*	Harvest-objective quota	Sport male harvest	Sport female harvest	Total sport harvest	Mean age	% permits filled	% quota filled	% females	% adult females	% ≥ 6 yrs old	Cougar treed / day	Wildlife Services harvest	Other mortality	Total harvest + mortality
2002	—	15	1	3	4	1.0	—	27	75	—	0	—	0	0	4
2003	—	15	9	7	16	3.9	—	107	44	—	25	0.56	0	1	17
2004	—	25	8	11	19	4.3	—	76	58	—	27	0.12	0	0	19
2005	—	25	4	1	5	1.0	—	20	20	—	0	0.31	0	0	5
2010	10	—	7	2	9	3.1	90	—	22	11	0	0.20	0	1	10
2011	10	—	4	0	4	4.3	40	—	0	0	25	0.35	0	1	5
2012	10	—	5	1	6	3.6	—	—	17	17	20	0.26	0	3	9
Mean	10	20	5	4	9	3.0	65	57	34	9	14	0.30	0	1	10

\*Includes limited-entry, conservation and convention permits.

Total cougar mortality for unit 14b – San Juan, Elk Ridge, Utah 2002–2005, 2010–2012.

Year	Limited-entry permits*	Harvest-objective quota	Sport male harvest	Sport female harvest	Total sport harvest	Mean age	% permits filled	% quota filled	% females	% adult females	% ≥ 6 yrs old	Cougar treed / day	Wildlife Services harvest	Other mortality	Total harvest + mortality
2002	—	10	1	1	2	3.0	—	20	50	—	0	—	0	0	2
2003	—	10	5	3	8	3.8	—	80	38	—	17	0.27	0	0	8
2004	—	15	3	3	6	1.0	—	40	50	—	0	—	0	0	6
2005	—	15	1	1	2	10.0	—	13	50	—	100	0.11	0	0	2
2010	—	10	4	0	4	2.0	—	40	0	0	0	0.35	0	0	4
2011	—	10	8	2	10	3.5	—	100	20	0	20	0.21	0	0	10
2012	—	—	4	2	6	2.0	—	—	33	0	0	0.38	0	0	6
Mean	—	12	4	2	5	3.6	—	49	34	0	20	0.26	0	0	5

\*Includes limited-entry, conservation and convention permits.



Total cougar mortality for unit 15 – Henry Mountains, Utah 1990–2012.

Year	Limited-entry permits*	Harvest-objective quota	Sport male harvest	Sport female harvest	Total sport harvest	Mean age	% permits filled	% quota filled	% females	% adult females	% ≥ 6 yrs old	Cougar treed / day	Wildlife Services harvest	Other mortality	Total harvest + mortality
1990	4	—	0	0	0	—	0	—	—	—	—	—	0	1	1
1991	4	—	1	1	2	—	50	—	50	—	—	—	0	0	2
1992	4	—	1	0	1	—	25	—	0	—	—	—	0	0	1
1993	4	—	1	1	2	—	50	—	50	—	—	—	0	0	2
1994	4	—	0	0	0	—	0	—	—	—	—	—	0	0	0
1995	4	—	1	1	2	—	50	—	50	—	—	—	0	0	2
1996	4	—	2	1	3	4.0	75	—	33	—	0	—	0	0	3
1997	—	5	1	5	6	4.4	—	120	83	—	20	—	0	0	6
1998	—	5	1	2	3	3.0	—	60	67	—	0	0.40	0	0	3
1999	—	5	3	0	3	1.3	—	60	0	—	0	0.38	0	0	3
2000	—	5	3	2	5	3.5	—	100	40	—	20	0.73	0	0	5
2001	—	8	3	3	6	2.8	—	75	50	—	0	0.55	0	0	6
2002	—	8	6	1	7	2.3	—	88	14	—	0	0.12	0	0	7
2003	—	8	3	4	7	4.0	—	88	57	—	20	0.35	0	0	7
2004	—	8	2	3	5	3.6	—	63	60	—	20	—	0	0	5
2005	—	8	1	0	1	—	—	13	0	—	—	0.28	0	0	1
2006	—	8	2	1	3	3.0	—	38	33	—	0	0.21	0	0	3
2007	—	6	0	0	0	—	—	0	—	—	—	0.38	0	0	0
2008	—	4	1	1	2	2.0	—	50	50	50	0	0.00	0	0	2
2009	—	4	1	1	2	4.0	—	50	50	50	0	—	0	0	2
2010	—	4	0	0	0	—	—	0	—	—	—	—	0	0	0
2011	—	3	0	1	1	1.0	—	33	—	0	0	0.12	0	0	1
2012	—	—	2	3	5	4.0	—	—	60	20	25	0.21	0	0	5
Mean	4	6	2	1	3	3.1	36	56	42	30	8	0.31	0	0	3

\*Includes limited-entry, conservation and convention permits.

Total cougar mortality for unit 16a – Central Mountains, Nebo, Utah 1990–2012.

Year	Limited-entry permits*	Harvest-objective quota	Sport male harvest	Sport female harvest	Total sport harvest	Mean age	% permits filled	% quota filled	% females	% adult females	% ≥ 6 yrs old	Cougar treed / day	Wildlife Services harvest	Other mortality	Total harvest + mortality
1990	26	—	13	3	16	—	62	—	19	—	—	—	16	0	32
1991	26	—	12	10	22	—	85	—	45	—	—	—	13	0	35
1992	26	—	10	5	15	—	58	—	33	—	—	—	8	0	23
1993	34	—	21	6	27	—	79	—	22	—	—	—	7	1	35
1994	34	—	12	7	19	—	56	—	37	—	—	—	11	0	30
1995	52	—	14	17	31	—	60	—	55	—	—	—	2	4	37
1996	43	—	5	11	16	2.9	37	—	69	—	7	—	2	0	18
1997	43	—	16	13	29	2.9	67	—	45	—	8	—	5	1	35
1998	34	—	9	10	19	4.8	56	—	53	—	17	0.40	1	0	20
1999	24	—	12	5	17	3.2	71	—	29	—	11	0.34	0	0	17
2000	24	—	11	3	14	2.7	58	—	21	—	3	0.37	0	0	14
2001	24	—	11	4	15	3.3	63	—	27	—	7	0.21	10	1	26
2002	24	—	10	9	19	3.5	79	—	47	—	18	0.26	2	0	21
2003	18	—	7	8	15	4.5	83	—	53	—	25	0.49	5	0	20
2004	18	—	9	7	16	3.1	89	—	44	—	7	0.44	2	3	21
2005	18	—	6	3	9	2.6	50	—	33	—	0	0.35	2	0	11
2006	12	—	4	3	7	3.3	58	—	43	—	0	0.21	4	0	11
2007	11	—	4	1	5	3.6	45	—	20	—	20	0.10	1	3	9
2008	9	—	3	1	4	3.8	44	—	25	0	25	0.53	5	0	9
2009	9	—	6	1	7	2.7	78	—	14	14	0	0.21	6	1	14
2010	9	—	5	2	7	2.7	78	—	29	29	0	0.38	2	2	11
2011	15	—	9	10	19	3.9	127	—	53	47	16	0.21	5	0	24
2012	15	—	9	5	14	3.4	—	—	36	29	14	0.25	6	1	21
Mean	24	—	9	6	16	3.3	67	—	37	24	10	0.32	5	1	22

\*Includes limited-entry, conservation and convention permits.  
 Before 2003, subunit was named "Manti, Nebo".

Total cougar mortality for unit 16a1 – Central Mountains, Nebo-West Face, Utah 2003–2012.

Year	Limited-entry permits*	Harvest-objective quota	Sport male harvest	Sport female harvest	Total sport harvest	Mean age	% permits filled	% quota filled	% females	% adult females	% ≥ 6 yrs old	Cougar treed / day	Wildlife Services harvest	Other mortality	Total harvest + mortality
2003	—	20	10	10	20	2.9	—	100	50	—	5	0.46	0	0	20
2004	—	20	3	12	15	2.7	—	75	80	—	8	0.27	0	1	16
2005	—	20	6	5	11	1.9	—	55	45	—	0	0.10	0	0	11
2006	—	20	5	9	14	2.4	—	70	64	—	0	0.11	0	0	14
2007	20	—	8	3	11	1.9	55	—	27	—	0	0.39	0	0	11
2008	20	—	4	3	7	2.3	35	—	43	0	0	0.14	0	0	7
2009	20	—	12	3	15	3.5	75	—	20	13	20	0.19	0	0	15
2010	21	—	3	1	5	2.2	24	—	20	0	0	0.09	0	0	5
2011	25	—	9	8	17	4.0	68	—	47	35	19	0.17	0	0	17
2012	25	—	7	4	11	2.3	—	—	36	27	0	0.25	0	0	11
Mean	22	20	7	6	13	2.6	51	75	43	15	5	0.22	0	0	13

\*Includes limited-entry, conservation and convention permits.

Total cougar mortality for unit 16b – Central Mountains, North Manti, Utah 1990–2003.

Year	Limited-entry permits*	Harvest-objective quota	Sport male harvest	Sport female harvest	Total sport harvest	Mean age	% permits filled	% quota filled	% females	% adult females	% ≥ 6 yrs old	Cougar treed / day	Wildlife Services harvest	Other mortality	Total harvest + mortality
1990	20	—	6	6	12	—	60	—	50	—	—	—	3	1	16
1991	20	—	9	2	11	—	55	—	18	—	—	—	2	1	14
1992	20	—	10	1	11	—	55	—	9	—	—	—	4	5	20
1993	35	—	15	8	23	—	66	—	35	—	—	—	3	5	31
1994	42	—	17	8	25	—	60	—	32	—	—	—	1	0	26
1995	52	—	20	10	30	—	58	—	33	—	—	—	2	3	35
1996	49	—	14	14	28	2.3	57	—	50	—	7	—	0	0	28
1997	48	—	13	10	23	3.2	48	—	43	—	8	—	1	0	24
1998	45	—	7	10	17	3.7	38	—	59	—	17	0.40	0	2	19
1999	40	—	11	13	24	3.2	60	—	54	—	11	0.34	4	0	28
2000	28	—	11	7	18	2.7	64	—	39	—	3	0.37	5	0	23
2001	28	—	11	7	18	2.8	64	—	39	—	6	0.18	0	2	20
2002	27	—	11	6	17	3.5	63	—	35	—	18	0.22	5	2	24
2003	28	—	9	6	15	2.7	54	—	40	—	0	0.24	3	7	25
Mean	34	—	12	8	19	3.0	57	—	38	—	9	0.29	2	2	24

\*Includes limited-entry, conservation and convention permits.  
 Before 2003, subunit was named "Manti, North Manti".

Total cougar mortality for unit 16b1 – Central Mountains, Northwest Manti, Utah 2004–2012.

Year	Limited-entry permits*	Harvest-objective quota	Sport male harvest	Sport female harvest	Total sport harvest	Mean age	% permits filled	% quota filled	% females	% adult females	% ≥ 6 yrs old	Cougar treed / day	Wildlife Services harvest	Other mortality	Total harvest + mortality
2004	16	—	6	2	8	2.7	50	—	25	—	0	—	0	1	9
2005	17	—	8	2	10	1.6	59	—	20	—	0	0.18	1	1	12
2006	16	—	4	2	6	3.2	38	—	33	—	0	0.35	0	0	6
2007	12	—	1	4	5	4.0	42	—	80	—	20	0.50	0	0	5
2008	10	—	4	0	4	2.5	40	—	0	0	0	0.43	0	0	4
2009	10	—	6	0	6	3.5	60	—	0	0	17	0.21	0	1	7
2010	10	—	8	1	9	2.7	90	—	11	0	0	0.10	0	0	9
2011	13	—	7	3	10	4.1	77	—	30	30	30	0.30	0	0	10
2012	13	—	5	3	8	2.8	—	—	38	25	0	0.06	0	2	10
Mean	13	—	5	2	7	3.0	57	—	26	11	7	0.27	0	1	8

\*Includes limited-entry, conservation and convention permits.

Total cougar mortality for Unit 16b2 – Central Mountains, Northeast Manti, Utah 2004–2012.

Year	Limited-entry permits*	Harvest-objective quota	Sport male harvest	Sport female harvest	Total sport harvest	Mean age	% permits filled	% quota filled	% females	% adult females	% ≥ 6 yrs old	Cougar treed / day	Wildlife Services harvest	Other mortality	Total harvest + mortality
2004	—	20	9	11	20	4.7	—	100	55	—	33	—	0	0	20
2005	20	10	3	5	8	3.7	20	40	63	—	29	0.10	1	0	9
2006	18	—	5	1	6	2.4	33	—	17	—	0	0.27	1	0	7
2007	17	—	3	2	5	2.2	29	—	40	—	0	0.14	0	0	5
2008	13	—	4	1	5	4.6	31	—	20	20	20	0.33	1	0	6
2009	13	—	5	2	7	3.4	54	—	29	14	17	0.10	0	0	7
2010	13	—	3	8	11	2.8	85	—	73	45	0	0.13	1	0	12
2011	13	—	4	6	10	3.7	77	—	60	40	20	0.21	0	1	11
2012	13	—	2	2	4	3.3	—	—	50	50	0	0.23	0	0	4
Mean	15	15	4	4	8	3.4	47	70	45	34	13	0.19	0	0	9

\*Includes limited-entry, conservation and convention permits.

Total cougar mortality for unit 16c – Central Mountains, South Manti, Utah 1990–2003.

Year	Limited-entry permits*	Harvest-objective quota	Sport male harvest	Sport female harvest	Total sport harvest	Mean age	% permits filled	% quota filled	% females	% adult females	% ≥ 6 yrs old	Cougar treed / day	Wildlife Services harvest	Other mortality	Total harvest + mortality
1990	29	—	12	3	15	—	52	—	20	—	—	—	2	1	18
1991	29	—	12	5	17	—	59	—	29	—	—	—	6	0	23
1992	29	—	14	3	17	—	59	—	18	—	—	—	5	1	23
1993	33	—	25	6	31	—	94	—	19	—	—	—	5	2	38
1994	37	—	20	9	29	—	78	—	31	—	—	—	4	0	33
1995	56	—	17	18	35	—	63	—	51	—	—	—	5	9	49
1996	44	—	13	14	27	3.4	61	—	52	—	7	—	3	1	31
1997	36	—	19	6	25	2.8	69	—	24	—	8	—	3	0	28
1998	40	—	15	9	24	2.4	60	—	38	—	17	0.40	3	2	29
1999	25	—	10	6	16	3.2	64	—	38	—	11	0.34	1	0	17
2000	20	—	10	5	15	2.7	75	—	33	—	3	0.37	0	0	15
2001	20	—	8	7	15	3.7	75	—	47	—	21	0.34	3	1	19
2002	21	—	13	4	17	3.7	81	—	24	—	13	0.31	1	1	19
2003	20	—	14	4	18	3.6	90	—	22	—	14	0.28	11	1	30
Mean	31	—	14	7	22	3.2	70	—	32	—	12	0.34	4	1	27

\*Includes limited-entry, conservation and convention permits.  
 Before 2003, subunit was named "Manti, South Manti".

Total cougar mortality for unit 16c1 – Central Mountains, Southwest Manti, Utah 2004–2012.

Year	Limited-entry permits*	Harvest-objective quota	Sport male harvest	Sport female harvest	Total sport harvest	Mean age	% permits filled	% quota filled	% females	% adult females	% ≥ 6 yrs old	Cougar treed / day	Wildlife Services harvest	Other mortality	Total harvest + mortality
2004	16	—	10	3	13	2.8	81	—	23	—	0	—	11	5	29
2005	16	—	8	2	10	2.0	63	—	20	—	0	0.32	1	0	11
2006	11	—	7	4	11	2.9	100	—	36	—	0	0.32	3	0	14
2007	8	—	3	3	6	3.5	75	—	50	—	20	0.30	0	0	6
2008	5	—	4	1	5	3.4	80	—	20	20	0	0.38	0	0	5
2009	5	—	6	0	6	3.0	60	—	0	0	0	0.43	0	2	8
2010	5	—	8	3	11	3.1	200	—	27	27	0	0.95	1	0	12
2011	8	—	7	1	8	3.6	100	—	13	13	0	0.17	2	1	11
2012	8	—	14	5	19	2.8	—	—	26	16	0	0.29	2	0	21
Mean	9	—	7	2	10	3.0	95	—	24	15	2	0.40	2	1	13

\*Includes limited-entry, conservation and convention permits.



Total cougar mortality for Unit 16c2 – Central Mountains, Southeast Manti, Utah 2004–2012.

Year	Limited- entry permits*	Harvest- objective quota	Sport male harvest	Sport female harvest	Total sport harvest	Mean age	% permits filled	% quota filled	% females	% adult females	% ≥ 6 yrs old	Cougar treed / day	Wildlife Services harvest	Other mortality	Total harvest + mortality
2004	—	20	9	11	20	3.8	—	100	55	—	17	—	4	1	25
2005	19	10	7	10	17	3.6	37	100	59	—	21	0.13	1	1	19
2006	18	—	3	1	4	3.0	22	—	25	—	0	0.14	2	0	6
2007	18	—	6	1	7	3.0	39	—	14	—	17	0.16	0	0	7
2008	12	—	3	2	5	2.0	33	—	40	0	0	0.48	0	1	6
2009	12	—	7	1	8	3.5	58	—	13	0	0	0.60	0	0	8
2010	11	—	5	6	11	4.5	100	—	55	36	40	0.32	0	0	11
2011	11	—	9	2	11	4.4	91	—	18	18	18	0.21	0	1	12
2012	11	—	14	3	17	3.5	—	—	18	18	12	0.47	1	0	18
Mean	14	15	7	4	10	3.5	54	100	33	14	14	0.31	1	0	12

\*Includes limited-entry, conservation and convention permits.

Total cougar mortality for unit 17 – Wasatch Mountains, Utah 1990–2001.

Year	Limited-entry permits*	Harvest-objective quota	Sport male harvest	Sport female harvest	Total sport harvest	Mean age	% permits filled	% quota filled	% females	% adult females	% ≥ 6 yrs old	Cougar treed / day	Wildlife Services harvest	Other mortality	Total harvest + mortality
1990	10	—	2	2	4	—	40	—	50	—	—	—	0	0	4
1991	10	—	2	1	3	—	30	—	33	—	—	—	0	0	3
1992	10	—	4	0	4	—	40	—	0	—	—	—	0	1	5
1993	28	—	11	4	15	—	54	—	27	—	—	—	6	7	28
1994	30	—	9	8	17	—	57	—	47	—	—	—	1	4	22
1995	43	—	15	10	25	—	58	—	40	—	—	—	4	8	37
1996	43	—	20	11	31	3.2	72	—	35	—	17	—	1	1	33
1997	42	—	18	11	29	3.4	69	—	38	—	19	—	2	11	42
1998	60	—	21	15	36	4.6	60	—	42	—	12	0.39	2	0	38
1999	55	—	15	13	28	2.6	51	—	46	—	11	0.23	1	0	29
2000	40	12	27	20	47	3.0	82	100	43	—	15	0.32	4	0	51
2001	40	24	21	26	47	2.8	68	83	55	—	7	0.26	5	5	57
Mean	34	18	14	10	24	3.3	57	92	38	—	14	0.30	2	3	29

\*Includes limited-entry, conservation and convention permits.

Total cougar mortality for unit 17a1 – Wasatch Mountains, Timpanogos, Utah 2002–2012.

Year	Limited-entry permits*	Harvest-objective quota	Sport male harvest	Sport female harvest	Total sport harvest	Mean age	% permits filled	% quota filled	% females	% adult females	% ≥ 6 yrs old	Cougar treed / day	Wildlife Services harvest	Other mortality	Total harvest + mortality
2002	—	12	5	5	10	2.8	—	83	50	—	0	—	0	0	10
2003	—	15	5	1	6	4.0	—	40	17	—	0	0.38	0	1	7
2004	—	15	4	0	4	2.5	—	27	0	—	0	0.47	0	0	4
2005	—	12	0	4	4	1.3	—	33	100	—	0	0.21	0	0	4
2006	—	12	3	3	6	3.8	—	50	50	—	17	0.12	0	0	6
2007	—	12	2	1	3	3.0	—	25	33	—	33	0.04	0	0	3
2008	—	9	2	7	9	3.0	—	100	78	33	17	0.27	0	1	10
2009	—	12	2	4	6	1.5	—	50	67	0	0	0.08	1	0	7
2010	—	12	3	1	4	3.3	—	33	25	25	0	0.11	0	4	8
2011	—	12	3	2	5	2.8	—	42	40	40	0	0.24	1	1	7
2012	—	—	2	0	2	1.5	—	—	0	0	0	0.08	3	0	5
Mean	—	12	3	3	5	2.7	—	48	42	20	6	0.20	0	1	6

\*Includes limited-entry, conservation and convention permits.

Total cougar mortality for unit 17a2 – Wasatch Mountains, Cascade, Utah 2002–2012.

Year	Limited-entry permits*	Harvest-objective quota	Sport male harvest	Sport female harvest	Total sport harvest	Mean age	% permits filled	% quota filled	% females	% adult females	% ≥ 6 yrs old	Cougar treed / day	Wildlife Services harvest	Other mortality	Total harvest + mortality
2002	—	12	7	6	13	2.6	—	108	46	—	17	—	0	1	14
2003	—	15	6	4	10	3.1	—	67	40	—	0	0.25	0	0	10
2004	—	15	4	4	8	3.8	—	53	50	—	33	0.50	0	0	8
2005	—	12	1	2	3	1.3	—	25	67	—	0	0.18	0	0	3
2006	—	12	5	3	8	4.0	—	67	38	—	14	0.18	0	0	8
2007	—	12	3	0	3	3.0	—	25	0	—	0	0.08	0	0	3
2008	—	9	3	6	9	3.7	—	100	67	22	22	0.49	0	0	9
2009	—	9	2	2	4	2.3	—	44	50	25	0	—	0	0	4
2010	—	9	4	4	8	2.3	—	89	50	13	0	0.37	0	0	8
2011	—	10	2	6	8	4.6	—	80	75	75	38	0.19	0	0	8
2012	—	—	1	5	6	2.7	—	—	83	50	0	0.07	0	0	6
Mean	—	12	3	4	7	3.0	—	66	51	37	11	0.26	0	0	7

\*Includes limited-entry, conservation and convention permits.

Total cougar mortality for unit 17a3 – Wasatch Mountains, West, Utah 2002–2012.

Year	Limited-entry permits*	Harvest-objective quota	Sport male harvest	Sport female harvest	Total sport harvest	Mean age	% permits filled	% quota filled	% females	% adult females	% ≥ 6 yrs old	Cougar treed / day	Wildlife Services harvest	Other mortality	Total harvest + mortality
2002	13	—	5	5	10	3.3	77	—	50	—	22	0.46	1	0	11
2003	12	—	4	3	7	6.3	58	—	43	—	33	0.32	0	2	9
2004	11	—	5	3	8	3.5	73	—	38	—	25	0.38	1	1	10
2005	11	—	6	2	8	2.3	73	—	25	—	0	0.00	1	1	10
2006	13	—	7	4	11	3.4	85	—	36	—	0	0.49	1	1	13
2007	10	—	4	2	6	3.2	60	—	33	—	0	0.37	0	0	6
2008	10	—	7	3	10	3.1	90	—	30	10	0	0.38	1	3	14
2009	11	—	6	5	11	3.7	73	—	45	45	22	0.38	1	2	14
2010	11	—	6	1	7	2.2	55	—	14	14	0	0.27	0	6	13
2011	11	—	9	5	14	3.2	91	—	36	29	0	0.35	0	4	18
2012	11	—	5	4	9	2.6	73	—	44	33	0	0.33	2	2	13
Mean	11	—	6	3	9	3.3	73	—	36	26	9	0.34	1	2	12

\*Includes limited-entry, conservation and convention permits.  
2002, 2003, and 2004 unit was called 17a Wasatch Mountains, West.

Total cougar mortality for Unit 17bc – Wasatch Mountains, Currant Creek / Avintaquin, Utah 2002–2003.

Year	Limited-entry permits*	Harvest-objective quota	Sport male harvest	Sport female harvest	Total sport harvest	Mean age	% permits filled	% quota filled	% females	% adult females	% ≥ 6 yrs old	Cougar treed / day	Wildlife Services harvest	Other mortality	Total harvest + mortality
2002	26	—	8	6	14	3.6	54	—	43	—	21	0.13	3	0	17
2003	25	—	9	6	15	3.9	60	—	40	—	20	0.21	1	1	17
Mean	26	—	9	6	15	3.8	57	—	41	—	21	0.17	2	1	17

\*Includes limited-entry, conservation and convention permits.

Total cougar mortality for unit 17b – Wasatch Mountains, Currant Creek, Utah 2004–2012.

Year	Limited-entry permits*	Harvest-objective quota	Sport male harvest	Sport female harvest	Total sport harvest	Mean age	% permits filled	% quota filled	% females	% adult females	% ≥ 6 yrs old	Cougar treed / day	Wildlife Services harvest	Other mortality	Total harvest + mortality
2004	15	—	2	1	3	2.7	20	—	33	—	0	—	2	0	5
2005	14	—	3	2	5	4.5	36	—	40	—	25	0.14	0	0	5
2006	14	—	4	0	4	3.5	29	—	0	—	25	0.13	0	0	4
2007	14	—	1	2	3	1.5	21	—	67	—	0	0.25	0	0	3
2008	8	—	1	1	2	3.0	25	—	50	0	0	0.00	0	1	3
2009	7	—	4	1	5	3.4	71	—	20	20	0	0.15	2	0	7
2010	7	—	2	0	2	2.5	29	—	0	0	0	0.05	0	3	5
2011	7	—	3	0	3	3.0	43	—	0	0	0	0.21	1	3	7
2012	7	—	2	1	3	3.7	43	—	33	33	33	0.15	1	0	4
Mean	10	—	2	1	3	3.1	35	—	27	11	9	0.14	1	1	5

\*Includes limited-entry, conservation and convention permits.

Total cougar mortality for unit 17c – Wasatch Mountains, Avintaquin, Utah 2004–2012.

Year	Limited- entry permits*	Harvest- objective quota	Sport male harvest	Sport female harvest	Total sport harvest	Mean age	% permits filled	% quota filled	% females	% adult females	% ≥ 6 yrs old	Cougar treed / day	Wildlife Services harvest	Other mortality	Total harvest + mortality
2004	—	15	1	9	10	2.6	—	67	90	—	0	—	0	0	10
2005	—	15	4	4	8	2.5	—	53	50	—	0	0.35	1	0	9
2006	—	15	2	2	4	1.7	—	27	50	—	0	0.16	0	0	4
2007	—	10	2	4	6	4.2	—	60	67	—	20	0.26	0	0	6
2008	—	10	6	1	7	3.3	—	70	14	0	14	0.11	0	0	7
2009	—	10	3	4	7	4.3	—	70	57	43	25	0.08	0	1	8
2010	—	10	5	4	9	3.4	—	90	44	33	0	0.30	1	1	11
2011	—	13	3	3	6	3.7	—	46	50	50	0	0.23	0	0	6
2012	—	—	3	4	7	3.3	—	—	57	29	29	0.16	0	0	7
Mean	—	12	3	4	7	3.2	—	60	53	31	10	0.21	0	0	8

\*Includes limited-entry, conservation and convention permits.

Total cougar mortality for unit 18 – Oquirrh-Stansbury, Utah 1990–2012.

Year	Limited-entry permits*	Harvest-objective quota	Sport male harvest	Sport female harvest	Total sport harvest	Mean age	% permits filled	% quota filled	% females	% adult females	% ≥ 6 yrs old	Cougar treed / day	Wildlife Services harvest	Other mortality	Total harvest + mortality
1990	11	—	2	2	4	—	36	—	50	—	—	—	2	0	6
1991	11	—	7	2	9	—	82	—	22	—	—	—	1	0	10
1992	11	—	3	1	4	—	36	—	25	—	—	—	1	1	6
1993	15	—	6	2	8	—	53	—	25	—	—	—	0	1	9
1994	17	—	5	5	10	—	59	—	50	—	—	—	3	0	13
1995	26	—	6	9	15	—	58	—	60	—	—	—	0	0	15
1996	26	—	9	9	18	3.9	69	—	50	—	27	—	2	2	22
1997	20	—	6	5	11	4.9	55	—	45	—	27	—	2	2	15
1998	20	—	9	8	17	2.8	85	—	47	—	13	0.30	0	1	18
1999	13	—	7	3	10	4.0	77	—	30	—	11	0.20	0	0	10
2000	13	—	4	4	8	3.0	62	—	50	—	17	0.26	0	0	8
2001	13	—	6	3	9	4.6	69	—	33	—	25	0.17	0	0	9
2002	16	—	6	5	11	3.3	69	—	45	—	0	0.16	0	1	12
2003	12	—	6	2	8	4.0	67	—	25	—	0	0.45	0	3	11
2004	11	—	1	3	4	2.5	36	—	75	—	0	0.32	0	0	4
2005	7	—	1	4	5	4.4	71	—	80	—	40	0.18	1	3	9
2006	7	—	4	2	6	3.4	86	—	33	—	20	0.31	1	0	7
2007	6	—	2	0	2	3.0	33	—	0	—	0	0.28	0	0	2
2008	6	—	3	1	4	2.8	67	—	25	25	0	0.30	1	0	5
2009	6	—	1	1	2	3.5	33	—	50	50	0	0.18	1	0	3
2010	3	—	1	1	2	5.0	33	—	50	50	50	0.18	0	0	2
2011	4	—	1	1	2	2.5	50	—	50	50	0	0.22	0	0	2
2012	4	—	2	0	2	3.0	50	—	0	0	0	0.12	0	0	2
Mean	12	—	4	3	7	3.6	58	—	40	35	14	0.24	1	1	9

\*Includes limited-entry, conservation and convention permits.



Total cougar mortality for unit 19a – West Desert, Mountain Ranges, Utah 1990–2012.

Year	Limited-entry permits*	Harvest-objective quota	Sport male harvest	Sport female harvest	Total sport harvest	Mean age	% permits filled	% quota filled	% females	% adult females	% ≥ 6 yrs old	Cougar treed / day	Wildlife Services harvest	Other mortality	Total harvest + mortality
1990	17	—	2	0	2	—	12	—	0	—	—	—	0	0	2
1991	17	—	0	1	1	—	6	—	100	—	—	—	3	1	5
1992	17	—	0	1	1	—	6	—	100	—	—	—	0	1	2
1993	20	—	3	1	4	—	20	—	25	—	—	—	2	1	7
1994	20	—	2	3	5	—	25	—	60	—	—	—	3	0	8
1995	20	—	4	4	8	—	40	—	50	—	—	—	3	6	17
1996	20	—	4	2	6	4.7	30	—	33	—	25	—	0	1	7
1997	—	10	4	6	10	4.8	—	100	60	—	31	—	0	0	10
1998	—	10	1	3	4	4.1	—	40	75	—	40	0.29	2	1	7
1999	—	10	1	2	3	3.2	—	30	67	—	17	0.20	0	0	3
2000	—	10	2	1	3	2.9	—	30	33	—	13	0.17	0	0	3
2001	—	8	3	0	3	3.0	—	38	0	—	0	0.29	0	0	3
2002	—	8	1	3	4	4.3	—	50	75	—	25	0.02	0	0	4
2003	—	8	2	0	2	4.0	—	25	0	—	0	0.00	0	0	2
2004	—	8	0	1	1	12.0	—	13	100	—	100	0.00	0	0	1
2005	—	8	1	1	2	2.0	—	25	50	—	0	0.14	0	0	2
2006	8	—	2	2	4	5.5	50	—	50	—	50	0.47	0	0	4
2007	8	—	0	1	1	5.0	13	—	100	—	0	0.00	0	0	1
2008	6	—	0	0	0	—	0	—	—	—	—	0.00	0	1	1
2009	6	—	0	3	3	7.0	50	—	100	100	67	0.29	0	1	4
2010	3	—	1	0	1	4.0	33	—	0	0	0	0.11	0	0	1
2011	4	—	2	1	3	3.7	75	—	33	0	33	0.14	0	0	3
2012	4	—	0	0	0	—	—	—	—	—	—	0.08	0	0	0
Mean	12	9	2	2	3	4.7	28	39	53	33	27	0.15	1	1	4

\*Includes limited-entry, conservation and convention permits.

Total cougar mortality for unit 19b – West Desert, Tintic-Vernon, Utah 1990–2012.

Year	Limited-entry permits*	Harvest-objective quota	Sport male harvest	Sport female harvest	Total sport harvest	Mean age	% permits filled	% quota filled	% females	% adult females	% ≥ 6 yrs old	Cougar treed / day	Wildlife Services harvest	Other mortality	Total harvest + mortality
1990	11	—	3	2	5	—	45	—	40	—	—	—	3	0	8
1991	11	—	5	0	5	—	45	—	0	—	—	—	1	2	8
1992	11	—	3	1	4	—	36	—	25	—	—	—	4	0	8
1993	10	—	2	2	4	—	40	—	50	—	—	—	3	0	7
1994	10	—	2	2	4	—	40	—	50	—	—	—	8	1	13
1995	15	—	3	5	8	—	53	—	63	—	—	—	0	0	8
1996	15	—	4	7	11	4.7	73	—	64	—	25	—	1	3	15
1997	—	5	1	7	8	4.8	—	160	88	—	31	—	1	1	10
1998	—	5	3	5	8	4.1	—	160	63	—	40	0.29	0	0	8
1999	8	—	3	0	3	—	38	—	0	—	17	0.20	0	0	3
2000	8	—	2	3	5	—	63	—	60	—	13	0.17	0	0	5
2001	—	7	4	3	7	4.1	—	100	43	—	29	0.38	0	0	7
2002	15	—	1	3	4	2.0	27	—	75	—	0	0.25	1	0	5
2003	15	—	6	0	6	2.4	40	—	0	—	0	0.14	0	0	6
2004	15	—	1	2	3	3.0	20	—	67	—	0	0.48	1	0	4
2005	15	—	4	1	5	2.3	33	—	20	—	0	0.10	0	0	5
2006	9	—	3	3	6	3.3	67	—	50	—	33	0.28	0	0	6
2007	8	—	4	7	11	3.4	138	—	64	—	22	0.14	0	0	11
2008	6	—	2	1	3	2.3	50	—	33	0	0	0.19	0	0	3
2009	5	—	0	2	2	3.5	40	—	100	100	0	0.22	0	0	2
2010	3	—	1	0	1	5.0	33	—	0	0	0	0.14	0	0	1
2011	4	—	2	0	2	6.0	50	—	0	0	50	0.13	0	0	2
2012	4	—	2	1	3	4.7	25	—	33	33	33	0.20	0	0	3
Mean	10	6	3	2	5	3.7	48	140	43	27	17	0.22	1	0	6

\*Includes limited-entry, conservation and convention permits.

Total cougar mortality for unit 19c – West Desert, Tintic, Utah 2002.

Year	Limited-entry permits*	Harvest-objective quota	Sport male harvest	Sport female harvest	Total sport harvest	Mean age	% permits filled	% quota filled	% females	% adult females	% ≥ 6 yrs old	Cougar treed / day	Wildlife Services harvest	Other mortality	Total harvest + mortality
2002	10	—	3	3	6	3.2	60	—	50	—	0.0%	—	0	0	6
Mean	10	—	3	3	6	3.2	60	—	50	—	0.0%	—	0	0	6

\*Includes limited-entry, conservation and convention permits.

Total cougar mortality for unit 20 – Southwest Desert, Utah 1990–2012.

Year	Limited-entry permits*	Harvest-objective quota	Sport male harvest	Sport female harvest	Total sport harvest	Mean age	% permits filled	% quota filled	% females	% adult females	% ≥ 6 yrs old	Cougar treed / day	Wildlife Services harvest	Other mortality	Total harvest + mortality
1990	8	—	5	3	8	—	100	—	38	—	—	—	1	2	11
1991	8	—	3	1	4	—	50	—	25	—	—	—	0	1	5
1992	8	—	0	2	2	—	25	—	100	—	—	—	0	1	3
1993	8	—	3	3	6	—	75	—	50	—	—	—	0	1	7
1994	11	—	3	4	7	—	64	—	57	—	—	—	0	0	7
1995	12	—	2	3	5	—	42	—	60	—	—	—	0	0	5
1996	12	—	4	0	4	2.8	33	—	0	—	25	—	0	1	5
1997	—	12	5	4	9	4.4	—	75	44	—	22	—	0	2	11
1998	—	12	6	0	6	2.8	—	50	0	—	12	0.26	0	0	6
1999	—	12	2	2	4	3.0	—	33	50	—	0	0.29	0	0	4
2000	—	12	4	2	6	2.0	—	50	33	—	0	0.09	0	0	6
2001	—	12	8	1	9	3.5	—	75	11	—	25	0.36	0	0	9
2002	—	12	5	6	11	3.7	—	92	55	—	10	0.09	0	0	11
2003	—	12	5	4	9	2.8	—	75	44	—	0	0.07	0	0	9
2004	—	12	3	3	6	4.0	—	50	50	—	33	0.13	0	0	6
2005	—	12	6	0	6	1.8	—	50	0	—	0	0.11	0	0	6
2006	12	—	3	1	4	4.5	33	—	25	—	25	0.10	0	0	4
2007	12	—	3	4	7	3.7	58	—	57	—	0	0.04	0	0	7
2008	11	—	2	0	2	1.5	18	—	0	0	0	0.06	0	0	2
2009	8	—	1	1	2	2.5	25	—	50	0	0	0.21	0	0	2
2010	6	—	2	0	2	3.0	33	—	0	0	0	0.14	0	0	2
2011	6	—	2	1	3	4.0	50	—	33	33	0	0.08	0	0	3
2012	6	—	3	3	6	3.0	—	—	50	33	0	0.29	0	0	6
Mean	9	12	3	2	6	3.1	47	61	36	13	9	0.15	0	0	6

\*Includes limited-entry, conservation and convention permits.

Total cougar mortality for unit 21 – Fillmore, Utah 1990–2001.

Year	Limited-entry permits*	Harvest-objective quota	Sport male harvest	Sport female harvest	Total sport harvest	Mean age	% permits filled	% quota filled	% females	% adult females	% ≥ 6 yrs old	Cougar treed / day	Wildlife Services harvest	Other mortality	Total harvest + mortality
1990	30	—	7	2	9	—	30	—	22	—	—	—	3	0	12
1991	30	—	8	5	13	—	43	—	38	—	—	—	1	1	15
1992	30	—	9	4	13	—	43	—	31	—	—	—	0	1	14
1993	35	—	22	9	31	—	89	—	29	—	—	—	2	2	35
1994	39	—	17	7	24	—	62	—	29	—	—	—	1	0	25
1995	47	—	18	12	30	—	64	—	40	—	—	—	0	0	30
1996	47	—	14	10	24	3.2	51	—	42	—	14	—	0	1	25
1997	—	40	20	20	40	4.3	—	100	50	—	29	—	0	5	45
1998	—	40	21	20	41	3.2	—	103	49	—	19	0.27	0	1	42
1999	—	25	10	16	26	3.4	—	104	62	—	12	0.23	1	0	27
2000	—	25	17	10	27	3.6	—	108	37	—	24	0.15	0	0	27
2001	—	30	11	17	28	3.4	—	93	61	—	8	0.41	0	0	28
Mean	37	32	15	11	26	3.5	55	102	41	—	18	0.27	1	1	27

\*Includes limited-entry, conservation and convention permits.

Total cougar mortality for unit 21a – Fillmore, Oak Creek, Utah 2002–2012.

Year	Limited-entry permits*	Harvest-objective quota	Sport male harvest	Sport female harvest	Total sport harvest	Mean age	% permits filled	% quota filled	% females	% adult females	% ≥ 6 yrs old	Cougar treed / day	Wildlife Services harvest	Other mortality	Total harvest + mortality
2002	—	7	1	4	5	2.4	—	71	80	—	0	0.36	0	0	5
2003	—	7	3	4	7	3.3	—	100	57	—	0	0.17	0	0	7
2004	—	10	4	1	5	3.2	—	50	20	—	0	0.19	0	1	6
2005	1	15	2	3	5	2.4	—	33	60	—	0	0.10	0	0	5
2006	10	—	2	2	4	4.0	40	—	50	—	50	0.19	0	0	4
2007	10	—	3	2	5	2.8	50	—	40	—	0	0.06	0	0	5
2008	10	—	2	2	4	2.5	40	—	50	25	0	0.03	0	0	4
2009	10	—	1	1	2	2.5	20	—	50	50	0	0.16	1	0	3
2010	—	8	3	3	6	2.6	—	75	50	50	0	0.05	0	0	6
2011	8	—	1	3	4	3.0	50	—	75	25	0	0.12	0	0	4
2012	8	—	1	3	4	3.8	—	—	75	50	25	0.05	0	0	4
Mean	8	9	2	3	5	3.0	40	66	55	40	7	0.13	0	0	5

\*Includes limited-entry, conservation and convention permits.

Total cougar mortality for unit 21b – Fillmore, Pahvant, Utah 2002–2012.

Year	Limited-entry permits*	Harvest-objective quota	Sport male harvest	Sport female harvest	Total sport harvest	Mean age	% permits filled	% quota filled	% females	% adult females	% ≥ 6 yrs old	Cougar treed / day	Wildlife Services harvest	Other mortality	Total harvest + mortality
2002	—	20	9	8	17	2.6	—	85	47	—	0	0.20	0	2	19
2003	11	7	9	4	13	5.3	73	86	31	—	33	0.21	0	1	14
2004	11	7	8	6	14	3.8	64	100	43	—	10	0.50	0	1	15
2005	18	15	5	2	7	2.2	17	27	29	—	0	0.11	1	1	9
2006	15	—	8	2	10	2.3	67	—	20	—	0	0.10	0	1	11
2007	10	—	5	3	8	2.6	80	—	38	—	14	0.19	0	0	8
2008	10	—	7	4	11	3.2	100	—	36	27	9	0.26	0	0	11
2009	10	—	6	4	10	5.4	90	—	40	40	33	0.25	0	2	12
2010	10	—	7	3	10	3.7	70	—	30	20	22	0.62	1	0	11
2011	9	—	9	2	11	3.7	89	—	18	9	10	0.31	0	4	15
2012	9	—	16	4	20	2.7	—	—	20	20	0	0.23	0	1	21
Mean	11	12	8	4	12	3.4	72	74	32	23	12	0.27	0	1	13

\*Includes limited-entry, conservation and convention permits.

Total cougar mortality for unit 22 – Beaver, Utah 1990–2012.

Year	Limited-entry permits*	Harvest-objective quota	Sport male harvest	Sport female harvest	Total sport harvest	Mean age	% permits filled	% quota filled	% females	% adult females	% ≥ 6 yrs old	Cougar treed / day	Wildlife Services harvest	Other mortality	Total harvest + mortality
1990	27	—	9	2	11	—	41	—	18	—	—	—	2	0	13
1991	27	—	7	4	11	—	41	—	36	—	—	—	0	0	11
1992	27	—	13	3	16	—	59	—	19	—	—	—	0	1	17
1993	31	—	12	5	17	—	55	—	29	—	—	—	0	0	17
1994	33	—	14	3	17	—	52	—	18	—	—	—	4	0	21
1995	37	—	16	9	25	—	68	—	36	—	—	—	2	4	31
1996	37	—	12	2	14	2.8	38	—	14	—	9	—	0	1	15
1997	45	—	11	15	26	3.5	58	—	58	—	14	—	1	2	29
1998	35	—	11	15	26	3.0	74	—	58	—	12	0.32	0	0	26
1999	25	—	10	2	12	3.7	48	—	17	—	25	0.37	0	0	12
2000	25	—	11	3	14	2.6	56	—	21	—	8	0.30	1	0	15
2001	25	—	9	5	14	4.5	56	—	36	—	23	0.35	1	0	15
2002	26	—	9	6	15	3.4	58	—	40	—	8	0.32	0	2	17
2003	25	—	7	5	12	4.8	48	—	42	—	25	0.27	0	0	12
2004	25	—	10	5	15	2.8	60	—	33	—	9	0.33	0	0	15
2005	19	15	10	8	18	3.1	53	53	44	—	8	0.22	0	1	19
2006	19	—	9	9	18	4.4	95	—	50	—	22	0.18	0	0	18
2007	18	—	10	11	21	2.4	117	—	52	—	5	0.26	0	0	21
2008	15	—	8	6	14	3.5	80	—	43	21	8	0.27	0	1	15
2009	15	—	12	3	15	3.2	87	—	20	13	20	0.29	0	1	16
2010	12	—	8	4	12	4.0	83	—	33	25	17	0.40	0	1	13
2011	13	—	10	6	16	4.1	115	—	38	38	25	0.34	0	3	19
2012	13	—	10	7	17	3.0	—	—	41	35	6	0.33	0	2	19
Mean	25	15	10	6	16	3.5	65	53	35	26	14	0.30	0	1	18

\*Includes limited-entry, conservation and convention permits.



Total cougar mortality for unit 23 – Monroe, Utah 1990–2012.

Year	Limited-entry permits*	Harvest-objective quota	Sport male harvest	Sport female harvest	Total sport harvest	Mean age	% permits filled	% quota filled	% females	% adult females	% ≥ 6 yrs old	Cougar treed / day	Wildlife Services harvest	Other mortality	Total harvest + mortality
1990	27	—	7	4	11	—	41	—	36	—	—	—	0	0	11
1991	27	—	11	6	17	—	63	—	35	—	—	—	0	0	17
1992	27	—	8	7	15	—	56	—	47	—	—	—	0	0	15
1993	34	—	10	8	18	—	53	—	44	—	—	—	2	0	20
1994	37	—	18	6	24	—	65	—	25	—	—	—	5	2	31
1995	34	—	11	5	16	—	47	—	31	—	—	—	0	0	16
1996	24	—	8	6	14	3.2	58	—	43	—	8	—	2	1	17
1997	40	—	9	8	17	3.8	43	—	47	—	28	—	2	1	20
1998	30	—	11	4	15	2.6	50	—	27	—	0	0.31	5	0	20
1999	25	—	5	2	7	2.7	28	—	29	—	0	0.42	0	0	7
2000	15	—	5	4	9	2.6	60	—	44	—	0	0.21	0	0	9
2001	15	—	4	2	6	4.4	40	—	33	—	40	0.16	0	0	6
2002	5	—	2	1	3	2.3	60	—	33	—	0	0.21	0	0	3
2003	5	—	4	0	4	2.7	80	—	0	—	0	0.30	0	0	4
2004	5	—	2	3	5	3.5	100	—	60	—	0	0.22	2	2	9
2005	6	—	6	0	6	2.0	100	—	0	—	0	0.22	0	1	7
2006	4	—	3	1	4	3.0	100	—	25	—	0	0.26	1	4	9
2007	5	—	3	0	3	4.3	60	—	0	—	33	0.38	1	9	13
2008	6	—	3	1	4	2.5	67	—	25	0	0	0.44	0	2	6
2009	9	—	7	0	7	3.5	67	—	0	0	0	0.55	2	3	12
2010	10	—	3	3	6	2.6	60	—	50	17	0	0.39	0	1	7
2011	12	—	1	7	8	3.8	67	—	88	75	13	0.31	0	2	10
2012	12	—	4	6	10	2.6	—	—	60	30	0	0.22	0	2	12
Mean	18	—	6	4	10	3.1	62	—	34	24	7	0.31	1	1	12

\*Includes limited-entry, conservation and convention permits.

Total cougar mortality for unit 24 – Mt. Dutton, Utah 1996–2012.

Year	Limited-entry permits*	Harvest-objective quota	Sport male harvest	Sport female harvest	Total sport harvest	Mean age	% permits filled	% quota filled	% females	% adult females	% ≥ 6 yrs old	Cougar treed / day	Wildlife Services harvest	Other mortality	Total harvest + mortality
1996	15	—	5	3	8	3.0	53	—	38	—	0	—	0	1	9
1997	20	—	8	3	11	4.3	55	—	27	—	18	—	1	0	12
1998	20	—	2	6	8	4.8	40	—	75	—	25	0.45	0	0	8
1999	15	—	2	3	5	3.4	33	—	60	—	0	0.11	0	0	5
2000	15	—	1	5	6	3.2	40	—	83	—	0	0.13	0	0	6
2001	10	—	3	0	3	4.3	30	—	0	—	33	0.60	0	0	3
2002	5	—	1	2	3	4.0	60	—	67	—	0	0.18	0	0	3
2003	5	—	3	1	4	5.0	80	—	25	—	0	0.57	0	0	4
2004	10	—	1	1	2	4.0	20	—	50	—	0	0.12	2	1	5
2005	—	10	5	5	10	3.7	—	100	50	—	20	0.16	2	1	13
2006	10	—	5	5	10	3.4	100	—	50	—	11	0.23	1	0	11
2007	10	—	5	2	7	2.9	70	—	29	—	14	0.24	3	0	10
2008	11	—	5	6	11	2.4	100	—	55	9	0	0.49	0	0	11
2009	11	—	6	4	10	3.3	91	—	40	30	0	0.19	0	0	10
2010	10	—	3	5	8	4.6	80	—	63	50	43	0.83	0	0	8
2011	16	—	6	2	8	3.6	50	—	25	25	0	0.22	0	0	8
2012	16	—	3	0	3	2.3	—	—	0	0	0	0.08	0	0	3
Mean	12	10	4	3	7	3.7	60	100	43	23	10	0.31	1	0	8

\*Includes limited-entry, conservation and convention permits.

Total cougar mortality for unit 25a – Plateau, Fishlake, Utah 1990–2012.

Year	Limited-entry permits*	Harvest-objective quota	Sport male harvest	Sport female harvest	Total sport harvest	Mean age	% permits filled	% quota filled	% females	% adult females	% ≥ 6 yrs old	Cougar treed / day	Wildlife Services harvest	Other mortality	Total harvest + mortality
1990	30	—	10	6	16	—	53	—	38	—	—	—	3	3	22
1991	30	—	13	4	17	—	57	—	24	—	—	—	6	3	26
1992	30	—	14	7	21	—	70	—	33	—	—	—	2	3	26
1993	36	—	23	7	30	—	83	—	23	—	—	—	7	3	40
1994	36	—	12	11	23	—	64	—	48	—	—	—	3	2	28
1995	43	—	11	16	27	—	63	—	59	—	—	—	4	8	39
1996	40	—	15	8	23	3.2	58	—	35	—	19	—	4	0	27
1997	45	—	11	20	31	4.2	69	—	65	—	21	—	4	1	36
1998	25	—	6	3	9	2.5	36	—	33	—	16	0.32	1	0	10
1999	15	—	6	3	9	3.1	60	—	33	—	4	0.32	0	0	9
2000	15	—	9	2	11	2.8	73	—	18	—	8	0.33	0	2	13
2001	15	—	5	5	10	3.8	67	—	50	—	11	0.28	0	1	11
2002	—	8	5	6	11	2.1	—	138	55	—	0	0.28	3	1	15
2003	6	4	6	2	8	2.0	67	100	25	—	0	0.32	0	3	11
2004	5	4	5	3	8	3.3	20	175	38	—	17	0.25	0	1	9
2005	6	8	7	5	12	1.8	67	100	42	—	0	0.12	0	1	13
2006	11	—	7	4	11	2.7	100	—	36	—	0	0.13	0	1	12
2007	11	—	6	3	9	3.5	82	—	33	—	0	0.29	0	3	12
2008	10	—	6	3	9	2.7	80	—	33	11	11	0.16	0	1	10
2009	7	—	6	4	10	3.1	129	—	40	20	11	0.20	0	1	11
2010	7	—	6	1	7	3.1	71	—	14	14	0	0.13	0	1	8
2011	8	—	6	5	11	3.8	125	—	45	45	9	0.27	3	0	14
2012	8	—	8	5	13	2.8	—	—	38	31	0	0.26	2	0	15
Mean	20	6	9	6	15	3.0	71	128	37	24	7	0.24	2	2	18

\*Includes limited-entry, conservation and convention permits.

Total cougar mortality for unit 25b – Plateau, Thousand Lakes, Utah 1994–2012.

Year	Limited-entry permits*	Harvest-objective quota	Sport male harvest	Sport female harvest	Total sport harvest	Mean age	% permits filled	% quota filled	% females	% adult females	% ≥ 6 yrs old	Cougar treed / day	Wildlife Services harvest	Other mortality	Total harvest + mortality
1994	10	—	2	5	7	—	70	—	71	—	—	—	0	0	7
1995	12	—	5	1	6	—	50	—	17	—	—	—	0	2	8
1996	12	—	2	2	4	4.3	33	—	50	—	19	—	0	0	4
1997	—	10	1	7	8	4.4	—	80	88	—	21	—	0	0	8
1998	—	10	6	4	10	3.7	—	100	40	—	16	0.32	0	0	10
1999	—	10	4	4	8	3.1	—	80	50	—	4	0.32	0	0	8
2000	—	5	3	1	4	2.8	—	80	25	—	8	0.33	0	0	4
2001	—	5	3	2	5	6.3	—	100	40	—	25	0.25	0	1	6
2002	—	4	2	2	4	3.0	—	100	50	—	0	0.18	0	0	4
2003	—	4	2	2	4	4.0	—	100	50	—	0	—	0	0	4
2004	—	10	3	3	6	4.7	—	60	50	—	33	—	0	0	6
2005	—	10	3	2	5	3.6	—	50	40	—	20	0.06	0	0	5
2006	10	—	3	0	3	2.5	30	—	0	—	0	0.10	0	0	3
2007	11	—	3	1	4	1.5	36	—	25	—	0	0.00	0	1	5
2008	7	—	1	0	1	—	14	—	0	0	—	0.20	0	0	1
2009	5	—	2	1	3	2.7	60	—	33	33	—	0.09	0	0	3
2010	5	—	2	1	3	2.7	60	—	33	0	0	0.00	0	0	3
2011	10	—	2	1	3	5.3	30	—	33	33	33	0.16	0	0	3
2012	10	—	1	1	2	3.0	—	—	50	50	50	0.00	0	1	3
Mean	9	8	3	2	5	3.6	43	83	39	23	15	0.15	0	0	5

\*Includes limited-entry, conservation and convention permits.

Total cougar mortality for unit 25c – Plateau, Boulder, Utah 1990–2012.

Year	Limited-entry permits*	Harvest-objective quota	Sport male harvest	Sport female harvest	Total sport harvest	Mean age	% permits filled	% quota filled	% females	% adult females	% ≥ 6 yrs old	Cougar treed / day	Wildlife Services harvest	Other mortality	Total harvest + mortality
1990	10	—	1	1	2	—	20	—	50	—	—	—	0	0	2
1991	10	—	3	1	4	—	40	—	25	—	—	—	0	2	6
1992	10	—	3	1	4	—	40	—	25	—	—	—	0	0	4
1993	13	—	4	4	8	—	62	—	50	—	—	—	0	0	8
1994	15	—	2	2	4	—	27	—	50	—	—	—	0	0	4
1995	18	—	5	1	6	—	33	—	17	—	—	—	1	2	9
1996	20	—	8	5	13	4.2	65	—	38	—	19	—	1	1	15
1997	—	20	11	16	27	4.1	—	135	59	—	21	—	3	4	34
1998	—	20	11	11	22	3.2	—	110	50	—	16	0.32	1	0	23
1999	—	15	6	6	12	3.1	—	80	50	—	4	0.32	0	0	12
2000	—	10	7	4	11	2.8	—	110	36	—	8	0.33	0	0	11
2001	—	10	4	7	11	3.3	—	110	64	—	13	0.46	0	0	11
2002	—	8	6	3	9	3.6	—	113	33	—	13	0.27	1	0	10
2003	10	4	4	3	7	2.7	30	100	43	—	0	0.57	0	1	8
2004	18	4	5	9	14	3.6	56	100	64	—	15	0.43	3	0	17
2005	—	15	11	4	15	2.4	—	100	27	—	0	0.19	3	3	21
2006	14	—	11	4	15	3.8	107	—	27	—	8	0.28	0	0	15
2007	14	—	6	4	10	2.6	71	—	40	—	10	0.50	0	1	11
2008	13	—	6	5	11	4.5	69	—	45	27	22	0.19	1	1	13
2009	9	—	5	4	9	4.2	100	—	44	33	29	0.12	1	2	12
2010	10	—	5	4	9	4.4	90	—	44	44	29	0.25	3	2	14
2011	16	—	9	5	14	3.5	88	—	36	21	17	0.39	2	4	20
2012	16	—	2	2	4	3.0	—	—	50	50	0	0.31	0	1	5
Mean	14	12	6	5	10	3.5	60	106	42	35	13	0.33	1	1	12

\*Includes limited-entry, conservation and convention permits.

Total cougar mortality for unit 26 – Kaiparowits, Utah 1997–2012.

Year	Limited-entry permits*	Harvest-objective quota	Sport male harvest	Sport female harvest	Total sport harvest	Mean age	% permits filled	% quota filled	% females	% adult females	% ≥ 6 yrs old	Cougar treed / day	Wildlife Services harvest	Other mortality	Total harvest + mortality
1997	—	10	1	0	1	6.0	—	10	0	—	100	—	1	0	2
1998	—	10	2	0	2	4.0	—	20	0	—	0	0.06	1	0	3
1999	—	10	0	0	0	—	—	0	—	—	—	0.13	1	0	1
2000	—	10	1	0	1	1.5	—	10	0	—	0	0.17	1	0	2
2001	—	10	1	1	2	7.0	—	20	50	—	50	0.63	0	0	2
2002	—	10	0	1	1	1.0	—	10	100	—	0	0.04	1	0	2
2003	—	10	2	1	3	4.7	—	30	33	—	33	—	0	0	3
2004	—	10	1	0	1	1.0	—	10	0	—	0	—	2	0	3
2005	—	10	0	1	1	—	—	10	100	—	—	0.06	0	0	1
2006	—	10	1	1	2	3.5	—	20	50	—	50	0.21	0	0	2
2007	—	10	0	1	1	3.0	—	10	100	—	—	—	0	0	1
2008	—	7	0	1	1	2.0	—	14	100	0	0	0.16	0	0	1
2009	—	7	1	0	1	6.0	—	14	0	0	—	—	0	0	1
2010	—	7	4	1	5	2.0	—	71	20	0	0	—	1	0	6
2011	—	6	1	1	2	4.0	—	33	50	50	50	0.29	0	0	2
2012	—	—	1	1	2	2.0	—	—	50	50	0	0.24	0	0	2
Mean	—	9	1	1	2	3.5	—	19	44	20	24	0.20	1	0	2

\*Includes limited-entry, conservation and convention permits.

Total cougar mortality for unit 27 – Paunsaugunt, Utah 1990–2012.

Year	Limited-entry permits*	Harvest-objective quota	Sport male harvest	Sport female harvest	Total sport harvest	Mean age	% permits filled	% quota filled	% females	% adult females	% ≥ 6 yrs old	Cougar treed / day	Wildlife Services harvest	Other mortality	Total harvest + mortality
1990	14	—	4	1	5	—	36	—	20	—	—	—	0	0	5
1991	14	—	5	0	5	—	36	—	0	—	—	—	0	0	5
1992	14	—	4	1	5	—	36	—	20	—	—	—	0	1	6
1993	14	—	6	0	6	—	43	—	0	—	—	—	0	1	7
1994	14	—	3	3	6	—	43	—	50	—	—	—	0	0	6
1995	16	—	1	1	2	—	13	—	50	—	—	—	0	0	2
1996	20	—	10	6	16	3.1	80	—	38	—	0	—	2	1	19
1997	—	12	8	5	13	4.2	—	108	38	—	33	—	3	0	16
1998	—	12	9	5	14	2.8	—	117	36	—	8	0.09	0	1	15
1999	—	10	5	3	8	4.9	—	80	38	—	29	0.20	0	0	8
2000	—	10	9	3	12	3.3	—	120	25	—	8	0.18	0	1	13
2001	—	10	7	3	10	2.7	—	100	30	—	10	0.55	2	1	13
2002	—	10	4	7	11	4.2	—	110	64	—	22	0.16	1	1	13
2003	12	5	6	4	10	4.3	50	80	40	—	50	0.36	0	1	11
2004	12	5	2	4	6	4.8	33	40	67	—	40	0.10	1	0	7
2005	11	5	2	0	2	3.0	18	0	0	—	0	0.02	1	0	3
2006	8	—	2	2	4	3.7	50	—	50	—	0	0.13	0	0	4
2007	7	—	3	3	6	2.2	86	—	50	—	0	0.26	0	1	7
2008	9	—	2	1	3	2.0	33	—	33	0	0	0.26	0	0	3
2009	9	—	4	1	5	3.4	56	—	20	20	0	0.25	1	0	6
2010	9	—	2	1	3	2.5	33	—	33	33	0	0.41	0	1	4
2011	9	—	4	3	7	3.3	78	—	43	29	17	0.39	0	0	7
2012	9	—	5	0	5	3.6	—	—	0	0	0	0.20	1	1	7
Mean	12	9	5	2	7	3.4	45	84	32	16	13	0.30	1	0	8

\*Includes limited-entry, conservation and convention permits.

Total cougar mortality for unit 28 – Panguitch Lake, Utah 1990–2012.

Year	Limited-entry permits*	Harvest-objective quota	Sport male harvest	Sport female harvest	Total sport harvest	Mean age	% permits filled	% quota filled	% females	% adult females	% ≥ 6 yrs old	Cougar treed / day	Wildlife Services harvest	Other mortality	Total harvest + mortality
1990	14	—	3	3	6	—	43	—	50	—	—	—	1	0	7
1991	14	—	4	2	6	—	43	—	33	—	—	—	0	0	6
1992	14	—	3	1	4	—	29	—	25	—	—	—	0	0	4
1993	14	—	9	3	12	—	86	—	25	—	—	—	0	1	13
1994	14	—	6	4	10	—	71	—	40	—	—	—	0	0	10
1995	17	—	8	5	13	—	76	—	38	—	—	—	0	0	13
1996	20	—	7	7	14	2.6	70	—	50	—	0	—	0	0	14
1997	20	—	10	5	15	2.9	75	—	33	—	7	—	0	2	17
1998	20	—	5	7	12	3.5	60	—	58	—	33	0.44	3	2	17
1999	15	—	5	5	10	3.3	67	—	50	—	0	0.51	1	0	11
2000	15	—	7	2	9	3.6	60	—	22	—	25	0.33	0	0	9
2001	—	10	6	4	10	2.8	—	100	40	—	10	0.77	2	0	12
2002	—	13	6	9	15	3.6	—	115	60	—	21	0.27	0	0	15
2003	12	6	7	6	13	2.9	67	83	46	—	0	0.19	2	2	17
2004	13	6	7	10	17	3.6	85	100	59	—	21	0.50	0	0	17
2005	11	8	7	4	11	2.8	36	88	36	—	11	0.31	0	1	12
2006	13	—	9	5	14	3.3	108	—	36	—	0	0.29	0	0	14
2007	12	—	8	6	14	2.6	117	—	43	—	8	0.25	1	1	16
2008	11	—	8	3	11	3.2	100	—	27	18	10	0.38	0	0	11
2009	11	—	6	5	11	2.8	100	—	45	18	0	0.41	0	0	11
2010	10	—	6	4	10	3.3	100	—	40	20	10	0.21	0	1	11
2011	11	—	8	5	13	3.6	100	—	38	38	8	0.37	0	1	14
2012	11	—	7	3	10	2.7	—	—	30	20	0	0.21	0	0	10
Mean	14	9	7	5	11	3.1	75	97	40	23	10	0.36	0	0	12

\*Includes limited-entry, conservation and convention permits.



Total cougar mortality for unit 29 – Zion, Utah 1990–2012.

Year	Limited-entry permits*	Harvest-objective quota	Sport male harvest	Sport female harvest	Total sport harvest	Mean age	% permits filled	% quota filled	% females	% adult females	% ≥ 6 yrs old	Cougar treed / day	Wildlife Services harvest	Other mortality	Total harvest + mortality
1990	25	—	5	5	10	—	40	—	50	—	—	—	0	0	10
1991	25	—	10	1	11	—	44	—	9	—	—	—	0	0	11
1992	25	—	7	1	8	—	32	—	13	—	—	—	0	0	8
1993	25	—	10	6	16	—	64	—	38	—	—	—	5	1	22
1994	33	—	2	4	6	—	18	—	67	—	—	—	1	0	7
1995	38	—	17	8	25	—	66	—	32	—	—	—	1	2	28
1996	50	—	12	9	21	3.5	42	—	43	—	19	—	3	2	26
1997	50	—	16	14	30	3.4	60	—	47	—	17	—	0	2	32
1998	50	—	15	9	24	2.9	48	—	38	—	13	0.26	0	2	26
1999	50	—	4	9	13	2.6	26	—	69	—	7	0.26	0	0	13
2000	40	—	7	6	13	3.1	33	—	46	—	14	0.18	2	1	16
2001	40	—	6	4	10	3.5	25	—	40	—	0	0.29	1	2	13
2002	15	15	9	14	23	3.4	60	93	61	—	18	0.26	5	1	29
2003	15	15	9	10	19	3.5	33	93	53	—	0	0.76	4	0	23
2004	1	28	4	14	18	2.9	—	64	78	—	8	0.05	2	0	20
2005	—	28	5	3	8	3.0	—	29	38	—	25	0.15	0	2	10
2006	—	28	10	7	17	3.1	—	61	41	—	13	0.19	0	0	17
2007	—	28	10	7	17	3.8	—	61	41	—	27	0.17	1	1	19
2008	—	28	8	8	16	3.4	—	57	50	38	0	0.26	1	0	17
2009	—	21	6	9	15	3.5	—	71	60	47	9	0.23	3	2	20
2010	—	21	8	6	14	2.8	—	67	43	14	0	0.11	1	2	17
2011	—	18	10	6	16	3.2	—	89	38	13	10	0.25	0	1	17
2012	—	—	5	8	13	2.8	—	—	62	23	0	0.17	1	0	14
Mean	32	23	8	7	16	3.2	42	69	46	27	10	0.24	1	1	18

\*Includes limited-entry, conservation and convention permits.

Total cougar mortality for unit 30ab – Pine Valley, West Pine Valley/Commanche, Utah 1990–2007.

Year	Limited-entry permits*	Harvest-objective quota	Sport male harvest	Sport female harvest	Total sport harvest	Mean age	% permits filled	% quota filled	% females	% adult females	% ≥ 6 yrs old	Cougar treed / day	Wildlife Services harvest	Other mortality	Total harvest + mortality
1990	40	—	14	1	15	—	38	—	7	—	—	—	1	2	18
1991	40	—	7	5	12	—	30	—	42	—	—	—	0	1	13
1992	40	—	7	6	13	—	33	—	46	—	—	—	0	1	14
1993	40	—	11	4	15	—	38	—	27	—	—	—	0	1	16
1994	42	—	10	10	20	—	48	—	50	—	—	—	0	0	20
1995	50	—	12	6	18	—	36	—	33	—	—	—	0	0	18
1996	50	—	11	6	17	2.6	34	—	35	—	0	—	0	1	18
1997	—	40	21	16	37	3.8	—	93	43	—	23	—	0	2	39
1998	—	40	13	16	29	2.3	—	73	55	—	14	0.21	0	0	29
1999	—	30	11	11	22	2.8	—	73	50	—	13	0.41	0	0	22
2000	—	30	11	8	19	2.6	—	63	42	—	11	0.18	0	0	19
2001	—	25	8	13	21	3.5	—	84	62	—	17	0.32	0	0	21
2002	20	10	7	4	11	2.5	40	30	36	—	10	0.18	2	1	14
2003	20	10	11	8	19	2.7	30	130	42	—	0	0.10	0	0	19
2004	20	10	10	5	15	2.7	35	80	33	—	8	0.18	0	1	16
2005	18	10	6	4	10	2.0	39	30	40	—	0	0.16	0	1	11
2006	15	—	11	5	16	3.5	107	—	31	—	13	0.13	0	0	16
2007	14	—	7	3	10	3.4	71	—	30	—	11	0.12	0	0	10
Mean	31	23	10	7	18	2.9	44	73	39	—	10	0.20	0	1	19

\*Includes limited-entry, conservation and convention permits.

Total cougar mortality for unit 30c – Pine Valley, Browse, Utah 1996–2007.

Year	Limited-entry permits*	Harvest-objective quota	Sport male harvest	Sport female harvest	Total sport harvest	Mean age	% permits filled	% quota filled	% females	% adult females	% ≥ 6 yrs old	Cougar treed / day	Wildlife Services harvest	Other mortality	Total harvest + mortality
1996	15	—	4	1	5	3.0	33	—	20	—	0	—	0	0	5
1997	—	10	3	1	4	3.3	—	40	25	—	23	—	0	0	4
1998	—	10	3	4	7	3.8	—	70	57	—	14	0.21	0	0	7
1999	—	10	1	1	2	2.8	—	20	50	—	13	0.41	0	0	2
2000	—	10	1	0	1	2.6	—	10	0	—	11	0.18	0	0	1
2001	—	10	4	3	7	2.3	—	70	43	—	0	0.25	0	0	7
2002	—	10	2	0	2	1.5	—	20	0	—	0	0.19	0	0	2
2003	—	10	0	0	0	—	—	0	—	—	—	0.00	0	0	0
2004	—	10	2	1	3	1.7	—	30	33	—	0	—	0	0	3
2005	—	10	1	0	1	3.0	—	10	0	—	0	0.27	0	0	1
2006	8	—	2	3	5	3.5	63	—	60	—	0	0.11	0	0	5
2007	7	—	2	1	3	1.7	43	—	33	—	0	0.02	0	0	3
Mean	10	10	2	1	3	2.6	46	30	29	—	6	0.18	0	0	3

\*Includes limited-entry, conservation and convention permits.

Total cougar mortality for unit 30 – Pine Valley, Utah 2008–2012.

Year	Limited-entry permits*	Harvest-objective quota	Sport male harvest	Sport female harvest	Total sport harvest	Mean age	% permits filled	% quota filled	% females	% adult females	% ≥ 6 yrs old	Cougar treed / day	Wildlife Services harvest	Other mortality	Total harvest + mortality
2008	19	—	10	7	17	3.1	89	—	41	18	13	0.23	0	0	17
2009	19	—	11	9	20	3.1	105	—	45	25	5	0.31	0	0	20
2010	19	—	7	6	13	3.6	68	—	46	31	0	0.13	0	1	14
2011	15	—	9	6	15	3.3	100	—	40	33	7	0.37	0	0	15
2012	15	—	9	1	10	2.4	—	—	10	10	0	0.50	0	0	10
Mean	17	—	9	6	15	3.1	92	—	36	23	5	0.31	0	0	15

\*Includes limited-entry, conservation and convention permits.  
Subunits were recombined in 2008.