

UTAH FURBEARER ANNUAL REPORT 2017-18



Publication No. 18-19



UTAH FURBEARER ANNUAL REPORT 2017–18

Prepared by:

Heather H. Bernales
Biometrician

and

Darren DeBlois
Mammals Program Coordinator

Publication No. 18-19

Annual Performance Report for Federal Aid Project W-65-M, segment 66

State of Utah
Department of Natural Resources
DIVISION OF WILDLIFE RESOURCES

Michal D. Fowlks
Director

TABLE OF CONTENTS

Definitions.....	1
Introduction.....	2
Methods.....	2
Results.....	3
Harvest by species.....	11
Badger.....	12
Beaver.....	14
Bobcat.....	18
Coyote.....	28
Gray fox.....	32
Kit fox.....	35
Marten.....	37
Mink.....	40
Muskrat.....	43
Raccoon.....	46
Red fox.....	50
Ringtail.....	54
Spotted skunk.....	56
Striped skunk.....	58
Weasel.....	61
Appendix: Utah furbearer management ecoregions.....	63

DEFINITIONS

Incidental harvest: Furbearers harvested in traps that were intended for a different furbearer species.

Trap year: Time frame corresponding to the 2017–18 furbearer seasons, as outlined in the 2017–18 Utah Furbearer Guidebook.

Trappers afield: Number of furbearer license holders who trapped furbearers during a particular trap year. License holders who took furbearers by means other than trapping, including shooting or with the aid of dogs, are included in this figure except for bobcat.

Total harvest: Number of furbearers of a particular species taken by means of trapping and hunting by furbearer license holders. This figure does not include harvest of unprotected wildlife, such as coyote, muskrat, red fox, raccoon, or striped skunk, taken by persons who did not purchase a furbearer license, nor does it include harvest of furbearers taken for creating a nuisance or causing damage.

Total set-days: Number of traps set during the furbearer season for the trapping of a particular species, multiplied by the number of days these traps were in the field. This figure pertains only to trapping, and does not include days afield by furbearer hunters or pursuers.

Pelt price: Average price paid for pelts of a specific furbearer species harvested in Utah, obtained mainly from a summary of the prices bid at the Utah Trappers Association fur auction, as well as prices from a survey of registered furdealers buying pelts harvested in Utah.

Wildlife Services harvest (coyote only): Number of coyotes taken by USDA-APHIS Wildlife Services in a particular year. Prior to 2006–07, Wildlife Services yearly harvest summaries applied to their fiscal year, which begins October 1 and ends September 30, although most harvest takes place during spring. Beginning in 2006–07, Wildlife Services harvest is reported for the period July 1 to June 30 of the following year.

INTRODUCTION

The furbearer harvest report presents furbearer harvest and trapper/hunter effort trends across the state of Utah, based on data collected from furbearer trappers and hunters. This report represents the furbearer portion of the Annual Performance Report for Federal Aid Project W-65-M, segment 66, grant agreement period July 1, 2017 through June 30, 2018. This Federal Aid project covers the 2017–18 trapping seasons. Additionally this report presents statewide trends since the early 1980s and population trend indicators for bobcats as well as the estimated economic value of Utah’s furbearer harvest each year. Furbearer harvest and trapper/hunter effort may have been more driven by pelt price than by availability, so annual fur harvest should not be used as the sole means to assess/project population sizes.

Furbearers included badger, beaver, bobcat, gray fox, kit fox, mink, marten, ringtail, spotted skunk, and weasel. A furbearer license was required to harvest any of these species, and additional permits were required to harvest bobcats and martens. There were no bag limits for furbearers, except bobcats. Each bobcat permit allowed a person to harvest one bobcat, and a single person could obtain up to 6 bobcat permits in 2017–18. Sales of bobcat permits were not capped. Season dates for badger, gray fox, kit fox, marten, ringtail, spotted skunk, and weasel were September 23, 2017 through March 1, 2018. Bobcat season was November 15, 2017 through March 1, 2018. Season dates for beaver and mink were September 23, 2017 through April 4, 2018.

Coyote, muskrat, red fox, raccoon, and striped skunk were not under the jurisdiction of the Division, and/or were unprotected. Those species could be taken year round without a license; therefore, results presented in this report do not include harvest by persons who did not purchase a furbearer license. It was prohibited to take black-footed ferret, fisher, lynx, river otter, wolf, and wolverine.

METHODS

Furbearer harvest and effort information was obtained from a telephone/web mixed-mode survey of a statistically-valid random sample of furbearer license holders. The accuracy of that survey was dependent upon the following assumptions: (1) a random sample was achieved (i.e., there was no response bias by those who harvested successfully versus those who did not), (2) respondents recorded or remembered data accurately and did not guess or lie, and (3) respondents clearly understood the questions.

Trappers who harvested bobcats and martens were required to bring the animals’ pelts to a Division office or officer to have permanent tags attached and to surrender the lower jaws. Bobcat and marten harvest data presented in this report, such as county of kill and sex of harvest, were collected at that time; as such, that information was not projected. Additional information on bobcat harvest, such as harvest effort by method, trappers-afield, number of sets, and number of days was determined by the survey mentioned in the preceding paragraph. Due to the small number of marten trappers in Utah, we did not attempt to survey marten trappers. Instead, since a separate permit is required to trap marten, we assumed that all those who purchased a marten permit attempted to trap marten.

To determine age structure of the bobcat harvest, a canine tooth from each bobcat jaw was sectioned, and aged using cementum annuli by Matson's Lab in Manhattan, Montana. Survival rates were estimated using the Chapman-Robson estimator. Pelt prices were obtained mainly from a summary of the prices bid at the Utah Trappers Association fur auction, as well as from a survey of registered furdealers buying pelts harvested in Utah.

Because some furbearer species in Utah were rare or not highly sought after by trappers, it was not possible to achieve sufficient sample sizes for these species to make valid statistical inferences. Although the trends for statewide harvest and effort were still valid, at the county level, the harvest and effort estimates had low precision and were likely inaccurate. As such, results by county were only reported for species with a sample size ≥ 20 .

Corrections and Clarifications

Prior to the 2005–06 season, harvest and effort were not separated out by method, e.g. trapping or hunting. Therefore, trapping harvest estimates included harvest by both trappers and hunters.

In an effort to obtain information on how many furbearers of a given species were taken incidentally, furbearer trappers were asked the question “Did you harvest any [species] in traps that were set for a different species, and, if so, how many?” Prior to 2009–10, all incidental harvest was included in the total harvest and harvest effort statistics. In the 2009–10 and 2010–11 annual reports, incidental harvest was included in statewide summaries of total furbearer harvest, but not in species-specific tables. This omission in 2009–10 and 2010–11 caused some confusion because harvest totals did not match between tables. Furthermore, comparisons of species-specific trapping harvest with prior years' numbers were confounded. This annual report was modified, beginning with the 2011–12 report, to include incidental harvest in species-specific statewide historical harvest tables.

RESULTS

License Sales and General Survey Results

Furbearer licenses were valid for 365 days from the date of purchase. We used the 365-day period of April 1 to March 31 to determine the total number of furbearer licenses sold for the furbearer season. A total of 2,026 furbearer licenses were sold for the 2017–18 season. The percentage of license holders who bought a furbearer license but did not attempt to harvest furbearers was 44%. The number of trappers afield in 2017–18 was 1,133.

Furbearer Harvest, Historical Trends, and Economic Value

The majority of the harvest taken by furbearer license holders in 2017–18 was of non-protected species—coyote, muskrat, and raccoon. Total harvest of regulated furbearer species (i.e., species with designated trapping seasons) was 5,984 in 2017–18, slightly higher than the 10-yr average of 5,708. The estimated economic value of Utah's furbearer harvest in 2017–18 was \$998,115.

Furbearer license sales and survey responses, Utah 1982–2018.

Trap year	Furbearer licenses sold			License holders surveyed		Projection factor	% license holders not afield
	Resident	Nonresident	Total	Total	Percent (%)		
1982–83	—	—	1325	664	50.1	—	—
1983–84	—	—	1367	616	45.1	—	—
1984–85	—	—	1491	806	54.1	—	—
1985–86	—	—	1424	680	47.8	—	—
1986–87	—	—	1342	585	43.6	—	—
1987–88	—	—	1576	731	46.4	—	—
1988–89	—	—	1318	721	54.7	—	—
1989–90	—	—	1084	597	55.1	—	—
1990–91	—	—	949	513	54.1	—	30.0
1991–92	—	—	1210	689	56.9	—	2.2
1992–93	—	—	1426	857	60.1	—	16.0
1993–94	—	—	1315	—	—	—	—
1994–95	—	—	1287	585	45.5	—	7.0
1995–96	—	—	1240	683	55.1	—	21.2
1996–97	—	—	1131	606	53.6	—	25.4
1997–98	—	—	1190	498	41.8	—	19.5
1998–99	—	—	1191	395	33.2	—	19.8
1999–00	1172	39	1211	458	37.8	2.6	11.6
2000–01	1204	20	1224	420	34.3	2.9	12.4
2001–02	956	21	977	302	30.9	3.2	11.6
2002–03	1409	40	1449	514	35.5	2.8	16.3
2003–04	1729	47	1776	597	33.6	3.0	16.9
2004–05	1830	65	1895	615	32.5	3.1	18.2
2005–06	1631	57	1688	260	15.4	6.5	27.7
2006–07	2029	81	2110	262	12.4	8.1	26.7
2007–08	2085	55	2140	563	26.3	3.8	31.8
2008–09	2045	57	2102	750	35.7	2.8	34.8
2009–10	1902	34	1936	798	41.2	2.4	30.2
2010–11	1788	29	1817	555	30.5	3.3	30.1
2011–12	1856	36	1892	531	28.1	3.6	33.3
2012–13	2080	52	2132	622	29.2	3.4	34.4
2013–14	2389	60	2449	726	29.6	3.4	35.4
2014–15	2802	67	2869	907	31.6	3.2	41.1
2015–16	2580	52	2632	714	27.1	3.7	35.6
2016–17	2078	54	2132	815	38.2	2.6	31.2
2017–18	1972	54	2026	864	42.6	2.3	44.1
Average	1870	48	1620	614	39.7	2.8	24.6

Statewide total furbearer harvest* estimates by species, Utah 2008–2018.

Species	Trap year										Average 2008–18
	2008–09	2009–10	2010–11	2011–12	2012–13	2013–14	2014–15	2015–16	2016–17	2017–18	
Badger	287	334	309	217	302	371	417	648	486	297	367
Beaver	1165	1910	1052	1026	2276	2021	1388	1511	973	945	1427
Bobcat	2062	1167	1002	1245	1365	1870	2919	1683	1856	2954	1812
Coyote	6945	6674	8128	5296	5749	5784	6873	8001	5124	5259	6383
Gray fox	1747	1392	907	1002	1288	1318	1015	1106	625	1067	1147
Kit fox	104	51	45	110	373	14	145	99	154	44	114
Marten	4	2	36	14	26	16	22	9	2	15	15
Mink	242	395	636	221	867	1012	341	188	246	272	442
Muskrat	1198	5505	7698	8266	13650	8764	6092	6175	3163	7265	6778
Raccoon	2368	5018	5946	4141	6239	5482	5437	4748	3628	5321	4833
Red fox	872	2657	2864	2273	2056	2517	2272	1880	1625	1503	2052
Ringtail	59	109	62	28	62	101	64	70	102	160	82
Spotted skunk	238	116	276	264	154	240	399	380	113	209	239
Striped skunk	1697	3270	2733	1679	2465	1970	1875	2211	1250	2490	2164
Weasel	11	60	37	25	131	13	76	30	236	21	64

*Total harvest includes incidental take.

Statewide furbearer trapping harvest statistics* by species, Utah 2017–18.

Species	Trappers afield	Trap harvest	Set-days	Set-days / furbearer	Furbearers / 1000 set-days	Furbearers / trapper	Pelt price (\$)
Badger	63	79	9351	118.5	8.4	1.2	6.51
Beaver	141	940	24223	25.8	38.8	6.7	6.34
Bobcat	957	2683	833255	310.6	3.2	2.8	236.45
Coyote	434	2584	413842	160.2	6.2	6.0	37.31
Gray fox	89	664	34428	51.9	19.3	7.4	8.98
Kit fox	2	14	816	58.0	17.2	6.0	6.60
Marten	184	15	—	—	—	—	—
Mink	59	225	38860	172.6	5.8	3.8	3.00
Muskrat	117	7131	122080	17.1	58.4	61.0	2.91
Raccoon	200	3539	101559	28.7	34.8	17.7	3.92
Red fox	203	1048	127532	121.7	8.2	5.2	14.63
Ringtail	26	110	6003	54.5	18.4	4.3	20.81
Spotted skunk	21	47	6085	129.8	7.7	2.2	8.65
Striped skunk	94	1198	51550	43.0	23.2	12.8	6.16
Weasel	16	12	21046	1795.0	0.6	0.7	1.00

*Does not include incidental harvest.

Statewide furbearer hunting harvest by species, Utah 2017–18.

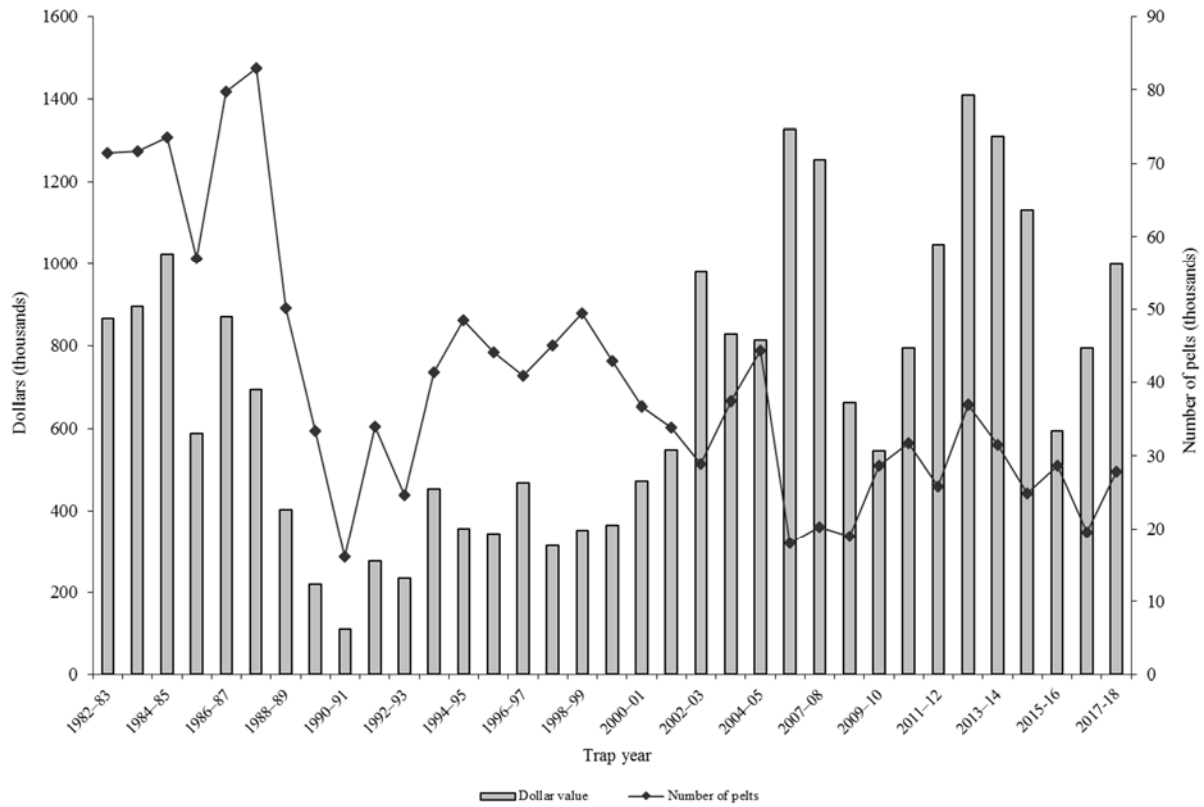
Species	Hunters afield	Hunt harvest	Hunting days	Days / furbearer	Furbearers / hunter
Badger	30	68	507	7.4	1.7
Beaver	0	—	—	—	—
Bobcat	341	262	4620	17.6	0.8
Coyote	326	2511	7241	2.9	7.7
Gray fox	12	14	12	0.8	1.2
Kit fox	0	—	—	—	—
Mink	0	—	—	—	—
Muskrat	5	24	12	0.5	58.8
Raccoon	69	1181	823	0.7	17.1
Red fox	53	84	721	8.6	1.6
Ringtail	2	2	2	1.0	1.0
Spotted skunk	2	7	141	20.0	3.0
Striped skunk	21	373	286	0.8	17.7
Weasel	2	2	2	1.0	1.0

Number of furbearers harvested in traps set for other species, Utah 2017–18.

Species	Incidental harvest	Trap / hunt harvest	Total harvest	% incidental harvest
Badger	145	152	297	48.8
Beaver	5	940	945	0.5
Bobcat	147	2954	2954	5.0
Coyote	164	5095	5259	3.1
Gray fox	389	678	1067	36.5
Kit fox	30	14	44	68.2
Marten	0	15	15	0.0
Mink	47	225	272	17.3
Muskrat	110	7155	7265	1.5
Raccoon	601	4720	5321	11.3
Red fox	372	1131	1503	24.8
Ringtail	47	113	160	29.4
Spotted skunk	155	54	209	74.2
Striped skunk	919	1571	2490	36.9
Weasel	7	14	21	33.3
Total	3138	24831	27822	11.3

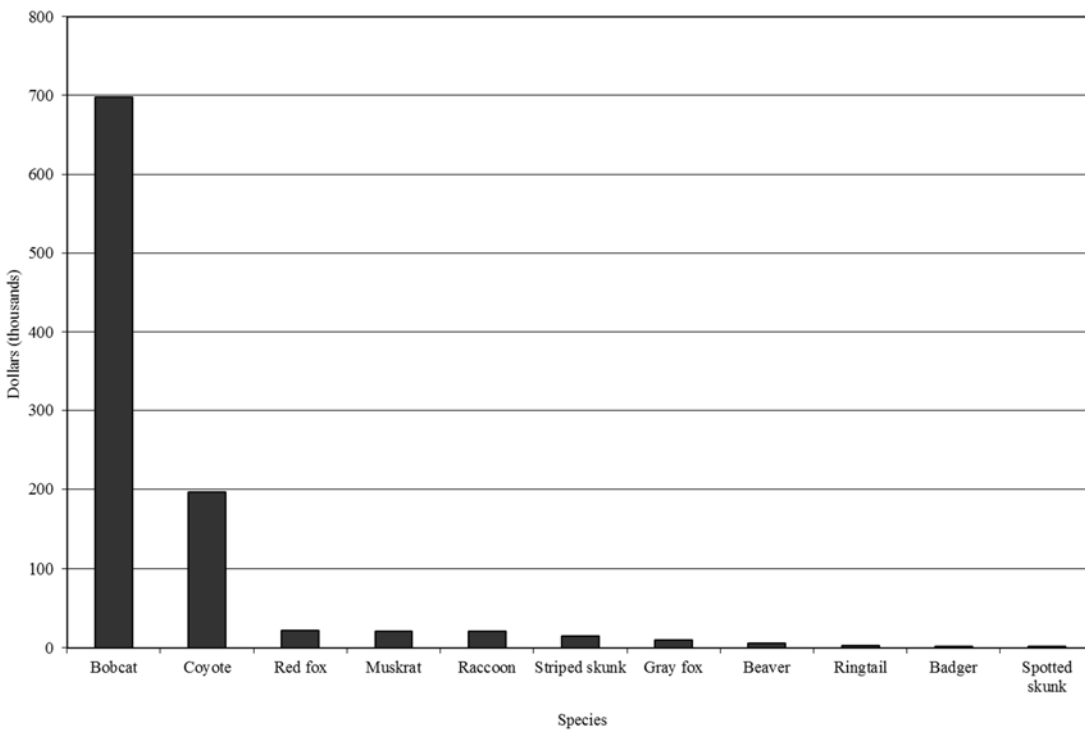
*Incidental bobcat harvest is accounted for in trap harvest.

Estimated economic value of the furbearer harvest taken by trappers in Utah, 1982–2018.



*No data available for 2007.

Proportional economic value of the furbearer harvest taken by trappers in Utah, by species, 2017–18.



Economic value* (in dollars) of furbearer species in Utah's annual furbearer harvest, Utah 1982–2018.

Trap year	Species														Total economic value (\$)
	Badger	Beaver	Bobcat	Coyote	Gray fox	Kit fox	Marten	Mink	Muskrat	Raccoon	Red fox	Ringtail	Skunk	Weasel	
1982–83	5945	20418	434340	203240	37352	7244	10	4394	119096	10526	16391	1430	4620	59	865064
1983–84	4794	25211	498960	152358	34353	8369	1680	3460	136033	11105	14869	1497	3597	0	896285
1984–85	6794	43796	511464	193809	48147	7272	288	4948	133589	18208	32220	794	22126	56	1023511
1985–86	1964	47463	301410	95322	21147	4568	2783	5022	72903	13751	21386	433	0	0	588152
1986–87	3239	93684	316416	166417	36848	5415	565	8802	157919	30439	49262	746	0	185	869938
1987–88	2772	69184	250635	107590	35779	5751	2000	12703	144058	24645	34765	643	2524	250	693300
1988–89	1943	27264	230282	27104	14837	4488	310	9129	46760	23932	16070	1060	290	23	403492
1989–90	1749	40991	85986	28913	5825	1164	0	7018	15039	14242	17550	350	387	8	219223
1990–91	1250	10066	45849	20892	2060	869	0	3437	6463	5375	12636	347	194	9	109446
1991–92	2015	13338	100672	65100	2762	520	0	4924	31275	10729	39194	708	4148	6	275390
1992–93	2308	7399	105390	57740	2988	821	0	2850	13715	4757	31635	425	4887	8	234924
1993–94	1709	16888	148962	128971	8244	1412	0	3970	42502	15768	74511	259	10768	158	454120
1994–95	4555	32270	90536	65890	7417	3425	0	2933	49362	18332	67159	1019	13359	20	356277
1995–96	2904	20502	71241	67722	8818	1363	0	5502	54883	23516	74399	947	11622	613	344032
1996–97	2888	27474	127995	75238	4257	1097	0	2946	83902	56444	74710	537	10356	96	467939
1997–98	1786	39328	75138	34862	3019	336	0	1958	54083	49790	42345	170	11878	85	314778
1998–99	5393	27642	116859	46840	6055	1228	43	2453	37878	38437	50120	575	18297	182	352002
1999–00	5646	20093	118175	67181	6124	531	0	2543	21086	30147	69531	710	23205	—	364973
2000–01	7731	20557	187868	71461	9272	987	—	2303	16394	29298	90184	708	33517	1318	471598
2001–02	4290	18326	275534	70404	15355	1833	—	1477	38945	30431	78140	1039	12208	—	547983
2002–03	7428	16288	588238	177649	24217	1643	—	555	10071	22486	124008	598	7344	14	980538
2003–04	8480	25112	411826	171428	18959	3432	0	5384	16920	59889	83827	656	23050	0	828964
2004–05	5901	37056	433104	144177	13009	2326	0	2847	23575	41889	88152	1412	19785	247	813480
2005–06	1802	39742	1049147	128773	14562	1998	—	2213	3271	32419	45632	959	6374	—	1326894
2007–08	4970	13037	946596	166006	42838	307	—	1736	5067	43288	24200	1604	4375	45	1254069

*Economic value was determined by multiplying average pelt price by total harvest for a given species.

Species with missing values contributed to Utah's annual furbearer harvest but were not included in the economic value estimate due to missing average pelt price or harvest data. No data was available for 2006–07. From 2001 to 2005, average striped skunk pelt price was used to calculate all skunk (spotted and striped) economic value.

Economic value* (in dollars) of furbearer species in Utah's annual furbearer harvest, Utah 1982–2018 (continued).

Trap year	Species														Total economic value (\$)
	Badger	Beaver	Bobcat	Coyote	Gray fox	Kit fox	Marten	Mink	Muskrat	Raccoon	Red fox	Ringtail	Skunk	Weasel	
2008–09	4996	15319	492186	75399	29816	791	—	1442	2988	14713	15676	631	7256	—	661214
2009–10	6458	22160	261073	98766	23047	483	—	3160	27148	35589	43366	1635	22895	458	546238
2010–11	5338	13421	369686	203226	19019	571	972	7170	41555	48575	64790	1173	18607	267	794368
2011–12	4435	16017	567920	230005	23177	1594	550	3333	60140	32162	96534	342	9823	114	1046146
2012–13	5225	46112	765710	227430	40152	5360	1462	16629	110710	87845	87380	971	14580	—	1409567
2013–14	5834	28951	761918	216267	31870	200	519	16406	76492	52102	101665	1809	16949	65	1311048
2014–15	4875	16101	651258	315333	16402	1034	483	2922	22906	29686	55210	1105	13173	296	1130784
2015–16	4944	11272	255193	237070	11890	647	—	793	11671	19467	28896	879	12043	92	594857
2016–17	4996	10898	507115	190920	9638	1589	—	1850	11956	17850	26260	2394	8060	838	794364
2017–18	1933	5991	698473	196213	9582	290	330	816	21141	20858	21989	3330	17146	21	998115
Average	4266	26839	367233	129306	18252	2313	461	4572	49186	29105	51847	968	11127	184	695516

*Economic value was determined by multiplying average pelt price by total harvest for a given species.

Species with missing values contributed to Utah's annual furbearer harvest but were not included in the economic value estimate due to missing average pelt price or harvest data.

HARVEST BY SPECIES

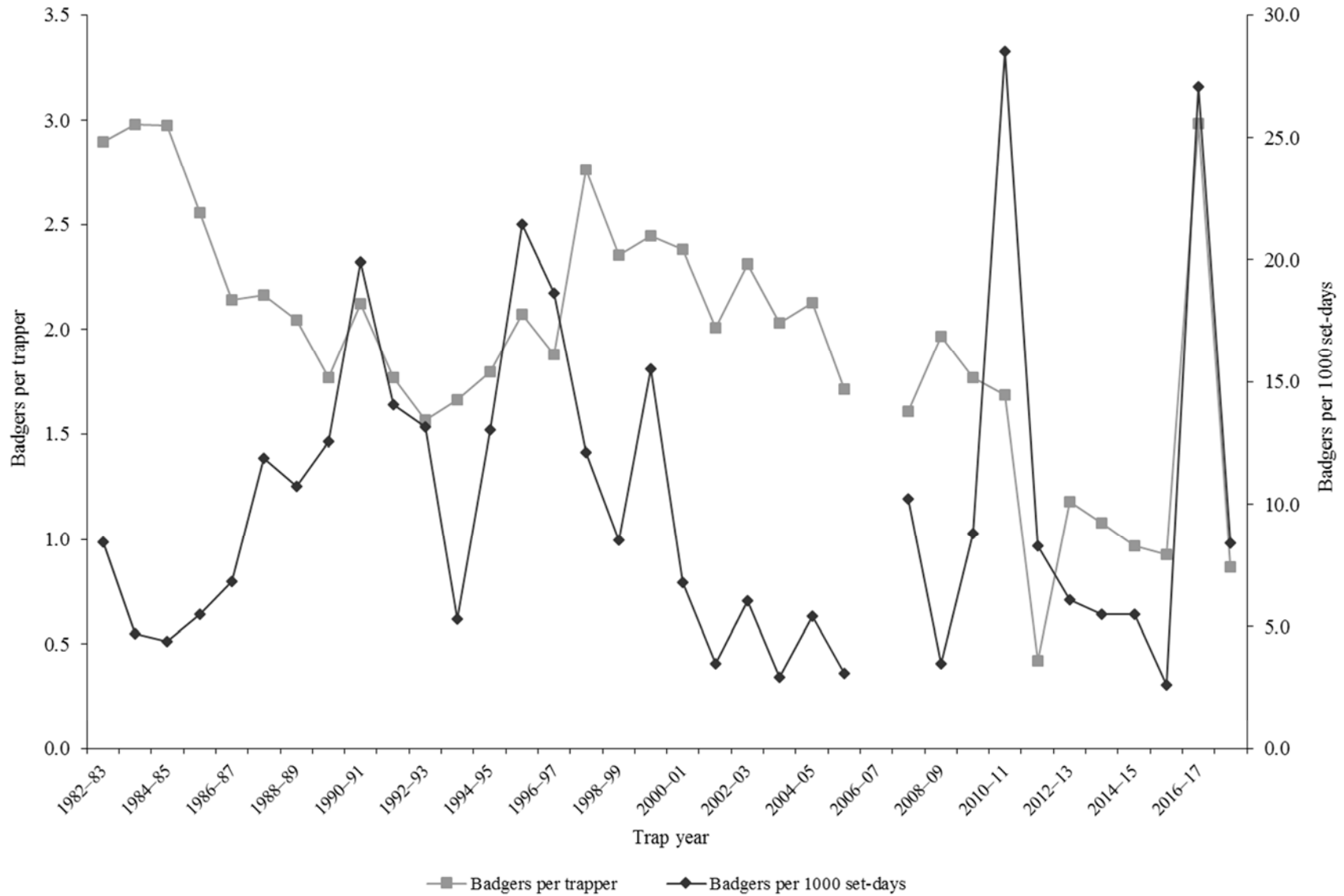
BADGER

Statewide badger harvest statistics*, Utah 1982–2018.

Trap year	Trappers afield	Incidental harvest	Trap harvest	Hunt harvest	Set-days / badger	Badgers / 1000 set-days	Badgers / trapper	Pelt price (\$)
1982–83	250	—	725	—	118	8.5	2.9	8.20
1983–84	188	—	560	—	212	4.7	3.0	8.56
1984–85	225	—	670	—	227	4.4	3.0	10.14
1985–86	194	—	496	—	182	5.5	2.6	3.96
1986–87	198	—	424	—	146	6.8	2.1	7.64
1987–88	212	—	459	—	84	11.9	2.2	6.04
1988–89	204	—	417	—	93	10.7	2.0	4.66
1989–90	207	—	366	—	80	12.5	1.8	4.78
1990–91	81	—	172	—	50	19.9	2.1	7.27
1991–92	134	—	237	—	71	14.1	1.8	8.50
1992–93	148	—	232	—	76	13.2	1.6	9.95
1993–94	143	—	238	—	188	5.3	1.7	7.18
1994–95	182	—	327	—	77	13.0	1.8	13.93
1995–96	133	—	276	—	47	21.4	2.1	10.52
1996–97	118	—	222	—	54	18.7	1.9	13.01
1997–98	98	—	271	—	83	12.1	2.7	6.59
1998–99	135	—	318	—	117	8.5	2.4	16.96
1999–00	177	—	433	—	64	15.5	2.4	13.04
2000–01	189	—	450	—	147	6.8	2.4	17.18
2001–02	137	—	275	—	288	3.5	2.0	15.60
2002–03	234	—	541	—	165	6.0	2.3	13.73
2003–04	223	—	453	—	341	2.9	2.0	18.72
2004–05	203	—	432	—	184	5.4	2.1	13.66
2005–06	70	—	120	—	324	3.1	1.7	15.02
2006–07	187	—	—	—	—	—	—	18.07
2007–08	171	—	275	—	98	10.2	1.6	14.14
2008–09	146	—	287	—	282	3.5	2.0	17.41
2009–10	78	196	138	—	113	8.8	1.8	19.34
2010–11	115	115	194	—	35	28.5	1.7	17.27
2011–12	110	82	46	89	120	8.3	0.4	20.44
2012–13	99	147	117	38	163	6.1	1.2	17.36
2013–14	91	216	98	57	180	5.5	1.1	15.73
2014–15	92	297	89	32	183	5.5	1.0	11.69
2015–16	103	464	140	44	384	2.6	0.9	7.63
2016–17	78	222	233	31	37	27.1	3.0	10.28
2017–18	91	145	79	68	119	8.4	0.9	6.51
Average	153	209	309	51	147	10.0	1.9	11.96

*Trappers and badgers per trapper include hunters and their harvest. Set-days per badger and badgers per 1000 set-days are based only on trapping activity, and do not include hunt harvest or hunter-days afield.

Statewide badger harvest trends, Utah 1982–2018.



Badger trapping harvest statistics by county and ecoregion, Utah 2017–18.

County	n	Trappers afield	Trap harvest	Traps set	Trapping days	Set-days	Set-days / badger	Badgers / 1000 set-days	Badgers / trapper
Beaver	1	2	2	8	5	28	18.0	55.6	0.7
Box Elder	1	2	16	9	70	281	17.1	58.3	7.0
Iron	0	0	—	—	—	—	—	—	—
Juab	1	2	2	38	106	1688	720.0	1.4	1.0
Millard	2	5	5	16	33	33	7.0	142.9	1.0
Tooele	0	0	—	—	—	—	—	—	—
Great Basin totals	5	12	25	72	213	2031	81.2	12.3	2.1
Cache	2	5	0	16	21	80	—	0.0	0.0
Davis	1	2	0	9	33	131	—	0.0	0.0
Morgan	0	0	—	—	—	—	—	—	—
Piute	0	0	—	—	—	—	—	—	—
Rich	1	2	0	12	12	59	—	0.0	0.0
Salt Lake	0	0	—	—	—	—	—	—	—
Sanpete	2	5	12	14	73	354	30.2	33.1	2.5
Sevier	0	0	—	—	—	—	—	—	—
Summit	1	2	0	9	33	131	—	0.0	0.0
Utah	4	9	2	56	209	1468	626.0	1.6	0.3
Wasatch	1	2	0	21	19	169	—	0.0	0.0
Weber	0	0	—	—	—	—	—	—	—
Rocky Mountain totals	12	28	14	138	399	2392	170.0	5.9	0.5
Daggett	1	2	7	0	2	0	0.0	—	3.0
Duchesne	3	7	5	42	101	530	113.0	8.8	0.7
Uintah	4	9	12	61	138	1426	121.6	8.2	1.3
Uintah Basin totals	8	19	23	103	242	1956	83.4	12.0	1.3
Carbon	1	2	2	5	49	98	42.0	23.8	1.0
Emery	0	0	—	—	—	—	—	—	—
Garfield	1	2	0	2	47	47	—	0.0	0.0
Grand	0	0	—	—	—	—	—	—	—
Kane	2	5	9	42	333	2828	301.5	3.3	2.0
San Juan	0	0	—	—	—	—	—	—	—
Washington	0	0	—	—	—	—	—	—	—
Wayne	1	2	5	0	2	0	0.0	—	2.0
Colorado Plateau totals	5	12	16	49	431	2973	181.1	5.5	1.4
Unknown	0	0	—	—	—	—	—	—	—
Statewide totals*	27	63	79	362	1285	9351	118.5	8.4	1.2

*Statewide totals for sample size and trappers afield are not totals of the columns because trappers trapped multiple counties.

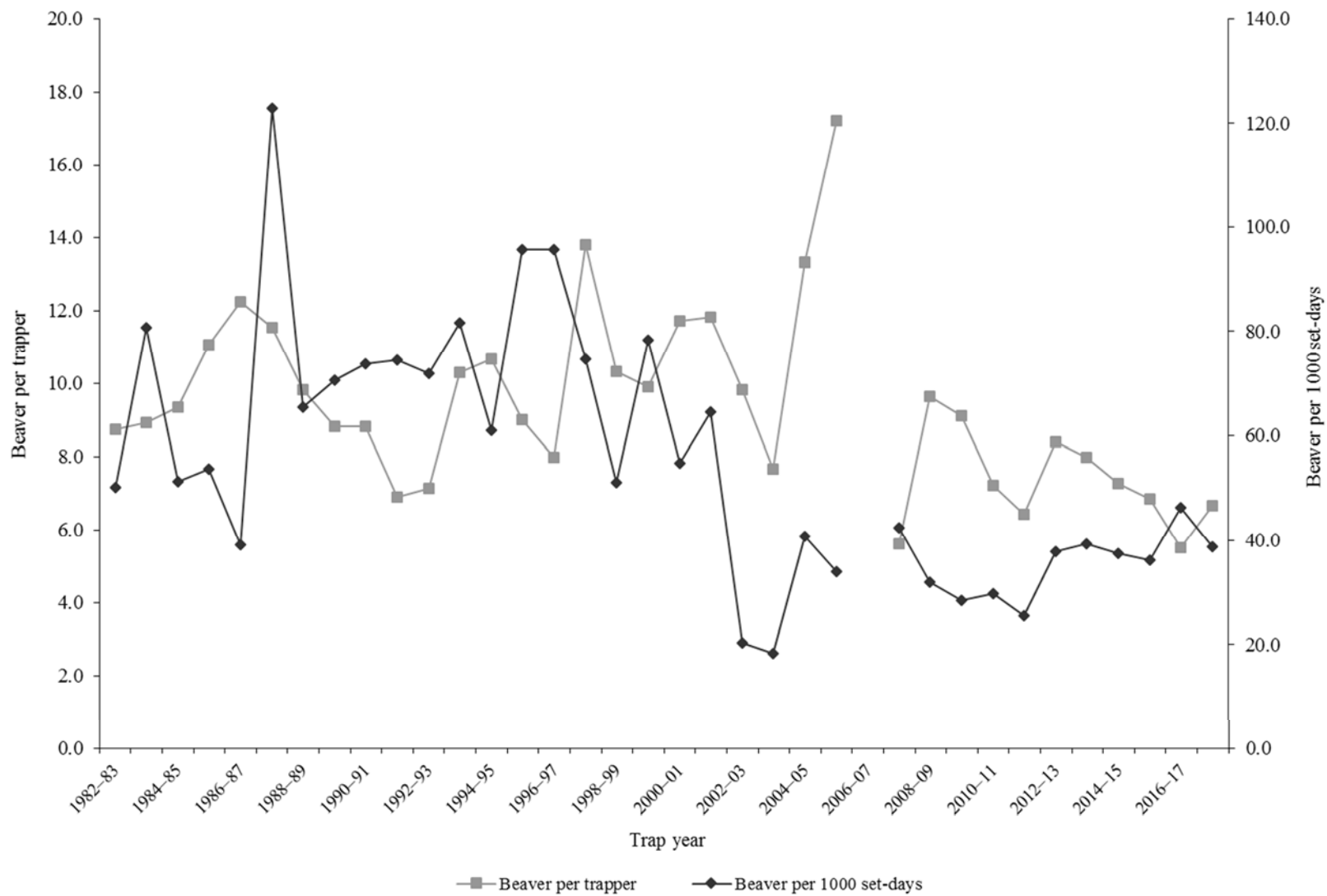
BEAVER

Statewide beaver harvest statistics*, Utah 1982–2018.

Trap year	Trappers afield	Incidental harvest	Trap harvest	Hunt harvest	Set-days / beaver	Beavers / 1000 set-days	Beavers / trapper	Pelt price (\$)
1982–83	181	—	1584	—	20	50.1	8.8	12.89
1983–84	200	—	1788	—	12	80.8	8.9	14.10
1984–85	285	—	2664	—	20	51.3	9.3	16.44
1985–86	293	—	3242	—	19	53.7	11.1	14.64
1986–87	338	—	4138	—	26	39.2	12.2	22.64
1987–88	409	—	4716	—	8	122.9	11.5	14.67
1988–89	277	—	2721	—	15	65.4	9.8	10.02
1989–90	390	—	3436	—	14	70.5	8.8	11.93
1990–91	176	—	1551	—	14	73.8	8.8	6.49
1991–92	216	—	1492	—	13	74.5	6.9	8.94
1992–93	134	—	956	—	14	71.9	7.1	7.74
1993–94	171	—	1761	—	12	81.6	10.3	9.59
1994–95	239	—	2551	—	16	61.0	10.7	12.65
1995–96	170	—	1530	—	10	95.7	9.0	13.40
1996–97	163	—	1299	—	10	95.7	8.0	21.15
1997–98	210	—	2896	—	13	74.6	13.8	13.58
1998–99	286	—	2950	—	20	51.0	10.3	9.37
1999–00	185	—	1830	—	13	78.4	9.9	10.98
2000–01	170	—	1992	—	18	54.7	11.7	10.32
2001–02	143	—	1689	—	16	64.5	11.8	10.85
2002–03	175	—	1720	—	49	20.3	9.8	9.47
2003–04	232	—	1781	—	55	18.2	7.7	14.10
2004–05	200	—	2664	—	25	40.7	13.3	13.91
2005–06	130	—	2239	—	29	33.9	17.2	17.75
2006–07	122	—	—	—	—	—	—	16.31
2007–08	133	—	745	—	24	42.5	5.6	17.50
2008–09	121	—	1165	—	31	31.9	9.6	13.15
2009–10	209	6	1904	—	35	28.5	9.1	11.60
2010–11	144	13	1039	—	34	29.8	7.2	12.76
2011–12	157	18	1008	—	39	25.4	6.4	15.61
2012–13	267	17	2245	14	26	37.9	8.4	20.26
2013–14	240	98	1913	10	25	39.3	8.0	14.33
2014–15	183	47	1332	9	27	37.5	7.3	11.60
2015–16	217	22	1486	4	28	36.1	6.8	7.46
2016–17	176	3	970	0	22	46.3	5.5	11.20
2017–18	141	5	940	0	26	38.8	6.7	6.34
Average	208	25	1998	6	22	54.8	9.4	12.94

*Trappers and beavers per trapper include hunters and their harvest. Set-days per beaver and beavers per 1000 set-days are based only on trapping activity, and do not include hunt harvest or hunter-days afield

Statewide beaver harvest trends, Utah 1982–2018.



Beaver trapping harvest statistics by county and ecoregion, Utah 2017–18.

County	n	Trappers afield	Trap harvest	Traps set	Trapping days	Set-days	Set-days / beaver	Beavers / 1000 set-days	Beavers / trapper
Beaver	2	5	2	14	16	63	27.0	37.0	0.5
Box Elder	4	9	16	94	185	2490	151.7	6.6	1.8
Iron	0	0	—	—	—	—	—	—	—
Juab	0	0	—	—	—	—	—	—	—
Millard	1	2	2	5	70	141	60.0	16.7	1.0
Tooele	0	0	—	—	—	—	—	—	—
Great Basin totals	7	16	21	113	272	2694	127.7	7.8	1.3
Cache	9	21	188	176	678	6214	33.1	30.2	8.9
Davis	1	2	7	12	49	246	35.0	28.6	3.0
Morgan	2	5	2	14	91	274	117.0	8.5	0.5
Piute	0	0	—	—	—	—	—	—	—
Rich	0	0	—	—	—	—	—	—	—
Salt Lake	3	7	16	16	87	195	11.9	84.3	2.3
Sanpete	0	0	—	—	—	—	—	—	—
Sevier	0	0	—	—	—	—	—	—	—
Summit	3	7	42	47	199	868	20.6	48.6	6.0
Utah	5	12	117	117	220	2214	18.9	53.0	10.0
Wasatch	6	14	197	68	485	4068	20.7	48.4	14.0
Weber	6	14	70	52	509	1709	24.3	41.2	5.0
Rocky Mountain totals	35	82	640	502	2319	15788	24.7	40.5	7.8
Daggett	0	0	—	—	—	—	—	—	—
Duchesne	5	12	40	45	349	1147	28.8	34.8	3.4
Uintah	7	16	138	61	603	2926	21.2	47.3	8.4
Uintah Basin totals	12	28	178	106	952	4073	22.9	43.8	6.3
Carbon	6	14	63	52	272	680	10.7	93.1	4.5
Emery	2	5	7	7	19	35	5.0	200.0	1.5
Garfield	0	0	—	—	—	—	—	—	—
Grand	0	0	—	—	—	—	—	—	—
Kane	0	0	—	—	—	—	—	—	—
San Juan	0	0	—	—	—	—	—	—	—
Washington	3	7	26	42	89	821	31.8	31.4	3.7
Wayne	0	0	—	—	—	—	—	—	—
Colorado Plateau totals	11	26	96	101	380	1536	16.0	62.6	3.7
Unknown	1	2	5	9	33	131	28.0	35.7	2.0
Statewide totals*	60	141	940	830	3956	24223	25.8	38.8	6.7

*Statewide totals for sample size and trappers afield are not totals of the columns because trappers trapped multiple counties.

BOBCAT

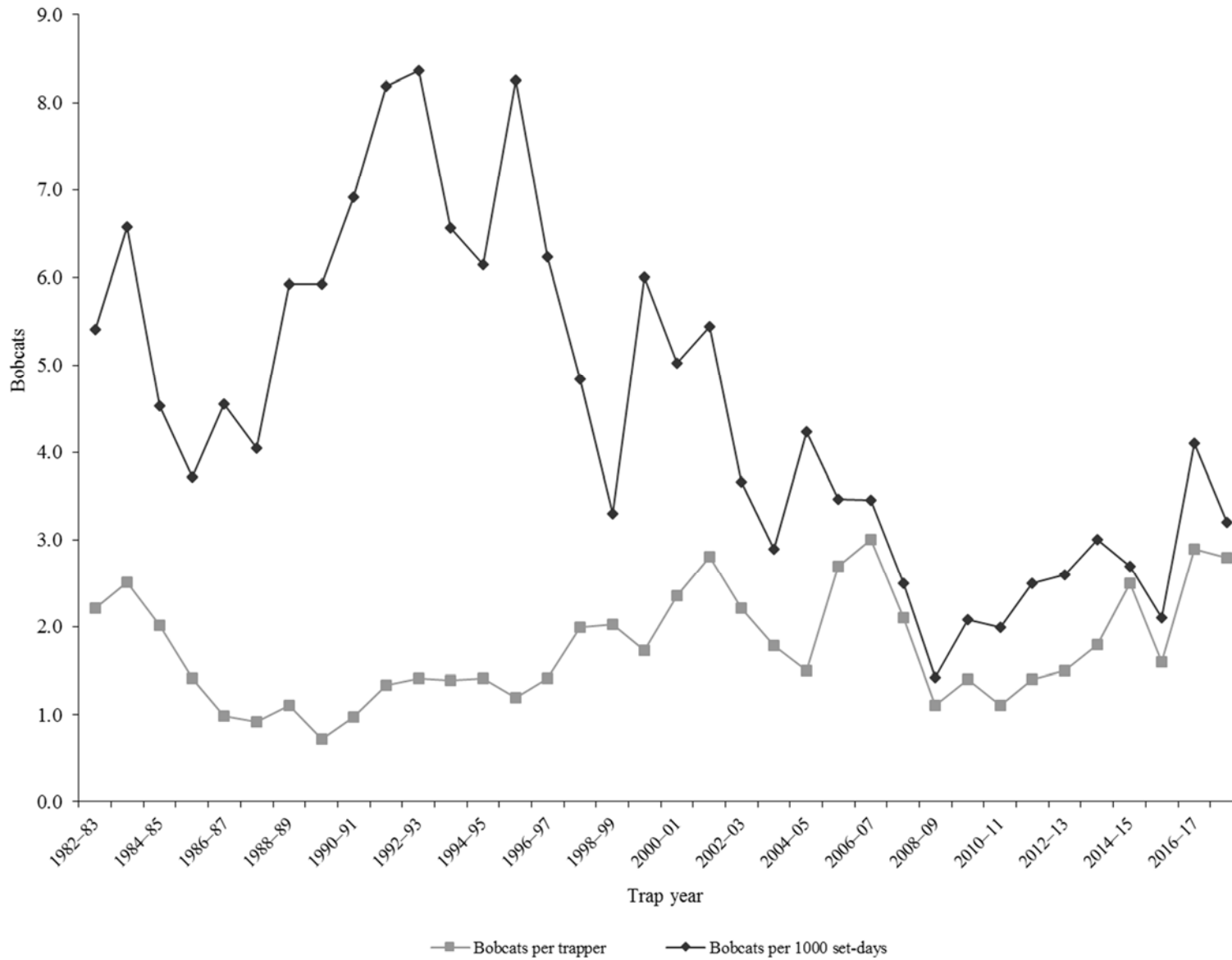
Statewide bobcat trapping harvest statistics, Utah 1982–2018.

Trap year	Trappers afield	Trap harvest	Set-days	Set-days / bobcat	Bobcats / 1000 set-days	Bobcats / trapper	Pelt price (\$)
1982–83	1145	2540	469979	185	5.4	2.2	171.00
1983–84	1050	2640	401841	152	6.6	2.5	189.00
1984–85	1253	2532	559480	221	4.5	2.0	202.00
1985–86	1083	1530	411493	269	3.7	1.4	197.00
1986–87	1036	1024	224778	220	4.6	1.0	309.00
1987–88	1108	1023	252680	247	4.0	0.9	245.00
1988–89	941	1042	175990	169	5.9	1.1	221.00
1989–90	1167	843	142360	169	5.9	0.7	102.00
1990–91	542	527	76218	145	6.9	1.0	87.00
1991–92	726	968	118293	122	8.2	1.3	104.00
1992–93	827	1171	139949	120	8.4	1.4	90.00
1993–94	900	1256	191367	152	6.6	1.4	118.60
1994–95	914	1293	210522	163	6.1	1.4	70.02
1995–96	749	896	108594	121	8.3	1.2	79.51
1996–97	615	866	138899	160	6.2	1.4	147.80
1997–98	619	1234	255147	207	4.8	2.0	60.89
1998–99	1031	2092	633774	303	3.3	2.0	55.86
1999–00	828	1430	238152	167	6.0	1.7	82.64
2000–01	852	2008	399609	199	5.0	2.4	93.56
2001–02	666	1866	342678	184	5.4	2.8	147.66
2002–03	984	2176	593692	273	3.7	2.2	270.33
2003–04	1133	2027	701383	346	2.9	1.8	203.17
2004–05	1300	1954	462019	236	4.2	1.5	221.65
2005–06	979	2625	757380	289	3.5	2.7	358.56
2006–07	1017	3037	877870	289	3.5	3.0	197.53
2007–08	985	2091	836519	400	2.5	2.1	388.43
2008–09	1630	1796	1258813	701	1.4	1.1	238.69
2009–10	717	1017	488709	481	2.1	1.4	223.71
2010–11	771	846	416474	492	2.0	1.1	368.95
2011–12	755	1094	437912	400	2.5	1.4	456.16
2012–13	836	1214	475902	392	2.6	1.5	560.96
2013–14	953	1690	562430	333	3.0	1.8	407.44
2014–15	1105	2776	1036043	373	2.7	2.5	223.11
2015–16	982	1543	739720	479	2.1	1.6	151.63
2016–17	571	1657	402966	243	4.1	2.9	273.23
2017–18	957	2683	833255	311	3.2	2.8	236.45
Average	937	1639	454803	270	4.5	1.8	209.82

Statewide bobcat hunting harvest statistics, Utah 2005–2018.

Trap year	Hunters afield	Hunt harvest	Hunter-days afield	Hunter-days / bobcat	Bobcats / hunter
2005–06	612	301	8194	27	0.5
2006–07	440	340	10408	31	0.8
2007–08	557	346	10089	29	0.6
2008–09	438	266	7360	28	0.6
2009–10	370	150	5253	35	0.4
2010–11	355	156	5888	38	0.4
2011–12	329	151	4146	28	0.5
2012–13	206	151	2739	18	0.7
2013–14	182	180	2901	16	1.0
2014–15	305	143	4203	29	0.5
2015–16	298	140	3819	27	0.5
2016–17	267	199	3446	17	0.7
2017–18	341	262	4620	18	0.8
Average	362	214	5620	26	0.6

Statewide bobcat trapping harvest trends, Utah 1982–2018.



Bobcat trapping harvest statistics by county and ecoregion, Utah 2017–18.

County	n	Trappers afield	Trap harvest**	Traps set	Trapping days	Set-days	Set-days / bobcat	Bobcats / 1000 set-days	Bobcats / trapper
Beaver	6	25	112	1206	383	20774	185.5	5.4	4.5
Box Elder	14	59	122	2731	834	48186	395.0	2.5	2.1
Iron	11	46	156	1407	885	18096	116.0	8.6	3.4
Juab	11	46	210	1513	624	26809	127.7	7.8	4.6
Millard	12	51	11	1896	670	31528	2866.2	0.3	0.2
Tooele	9	38	228	2094	700	41995	184.2	5.4	6.0
Great Basin totals	63	265	839	10848	4096	187389	223.3	4.5	3.2
Cache	6	25	8	746	122	3498	437.3	2.3	0.3
Davis	2	8	189	169	38	885	4.7	213.6	23.6
Morgan	4	17	30	228	76	851	28.4	35.3	1.8
Piute	4	17	13	1504	131	11281	867.8	1.2	0.8
Rich	2	8	9	632	232	18962	2106.9	0.5	1.1
Salt Lake	1	4	322	379	84	7585	23.6	42.5	80.5
Sanpete	11	46	142	2885	653	42480	299.2	3.3	3.1
Sevier	19	80	26	4227	1690	114061	4387.0	0.2	0.3
Summit	7	29	98	788	261	9844	100.4	10.0	3.4
Utah	14	59	63	2878	619	30812	489.1	2.0	1.1
Wasatch	5	21	17	1083	257	17016	1000.9	1.0	0.8
Weber	5	21	15	758	110	4930	328.7	3.0	0.7
Rocky Mountain totals	80	337	932	16278	4273	262204	281.3	3.6	2.8
Daggett	3	13	41	371	152	4686	114.3	8.7	3.2
Duchesne	21	88	56	4157	1344	62391	1114.1	0.9	0.6
Uintah	24	101	1	4111	1131	56912	56912.0	0.0	0.0
Uintah Basin totals	48	202	98	8638	2627	123989	1265.2	0.8	0.5
Carbon	10	42	99	1723	527	22418	226.4	4.4	2.4
Emery	6	25	168	1454	350	15275	90.9	11.0	6.7
Garfield	11	46	78	2620	952	60538	776.1	1.3	1.7
Grand	5	21	134	619	426	18587	138.7	7.2	6.4
Kane	13	55	84	2465	750	31644	376.7	2.7	1.5
San Juan	11	46	38	2161	695	32613	858.2	1.2	0.8
Washington	15	63	169	2064	881	26586	157.3	6.4	2.7
Wayne	4	17	43	512	147	4816	112.0	8.9	2.5
Colorado Plateau totals	75	316	813	13618	4728	212478	261.4	3.8	2.6
Unknown	4	17	1	944	596	47195	47195.0	0.0	0.1
Statewide totals*	227	957	2683	50326	16320	833255	310.6	3.2	2.8

*Statewide totals for sample size and trappers afield are not totals of the columns because trappers trapped multiple counties.

**Total harvest numbers are from pelt check-in, while numbers of trappers afield and effort are determined from harvest survey.

Bobcat hunting harvest statistics by county and ecoregion, Utah 2017–18.

County	n	Hunters afield	Hunt harvest**	Hunter-days afield	Hunter-days / bobcat	Bobcats / hunter
Beaver	3	13	10	42	4.2	0.8
Box Elder	11	46	30	678	22.6	0.7
Iron	4	17	9	152	16.9	0.5
Juab	8	34	4	177	44.3	0.1
Millard	7	29	9	80	8.9	0.3
Tooele	11	46	16	472	29.5	0.3
Great Basin totals	44	185	78	1601	20.5	0.4
Cache	4	17	17	215	12.6	1.0
Davis	0	0	1	0	0.0	—
Morgan	1	4	8	17	2.1	2.0
Piute	0	0	2	0	0.0	—
Rich	1	4	6	8	1.3	1.5
Salt Lake	0	0	—	—	—	—
Sanpete	2	8	10	51	5.1	1.3
Sevier	2	8	6	67	11.2	0.8
Summit	1	4	2	4	2.0	0.5
Utah	10	42	18	219	12.2	0.4
Wasatch	2	8	14	88	6.3	1.8
Weber	0	0	1	0	0.0	—
Rocky Mountain totals	23	97	85	669	7.9	0.9
Daggett	3	13	1	215	215.0	0.1
Duchesne	8	34	7	864	123.4	0.2
Uintah	9	38	24	590	24.6	0.6
Uintah Basin totals	20	84	32	1669	52.2	0.4
Carbon	2	8	2	67	33.5	0.3
Emery	2	8	9	67	7.4	1.1
Garfield	3	13	4	63	15.8	0.3
Grand	2	8	6	55	9.2	0.8
Kane	1	4	6	21	3.5	1.5
San Juan	3	13	37	38	1.0	2.8
Washington	4	17	2	341	170.5	0.1
Wayne	0	0	1	0	0.0	—
Colorado Plateau totals	17	72	67	652	9.7	0.9
Unknown	6	25	0	29	—	0.0
Statewide totals*	81	341	262	4620	17.6	0.8

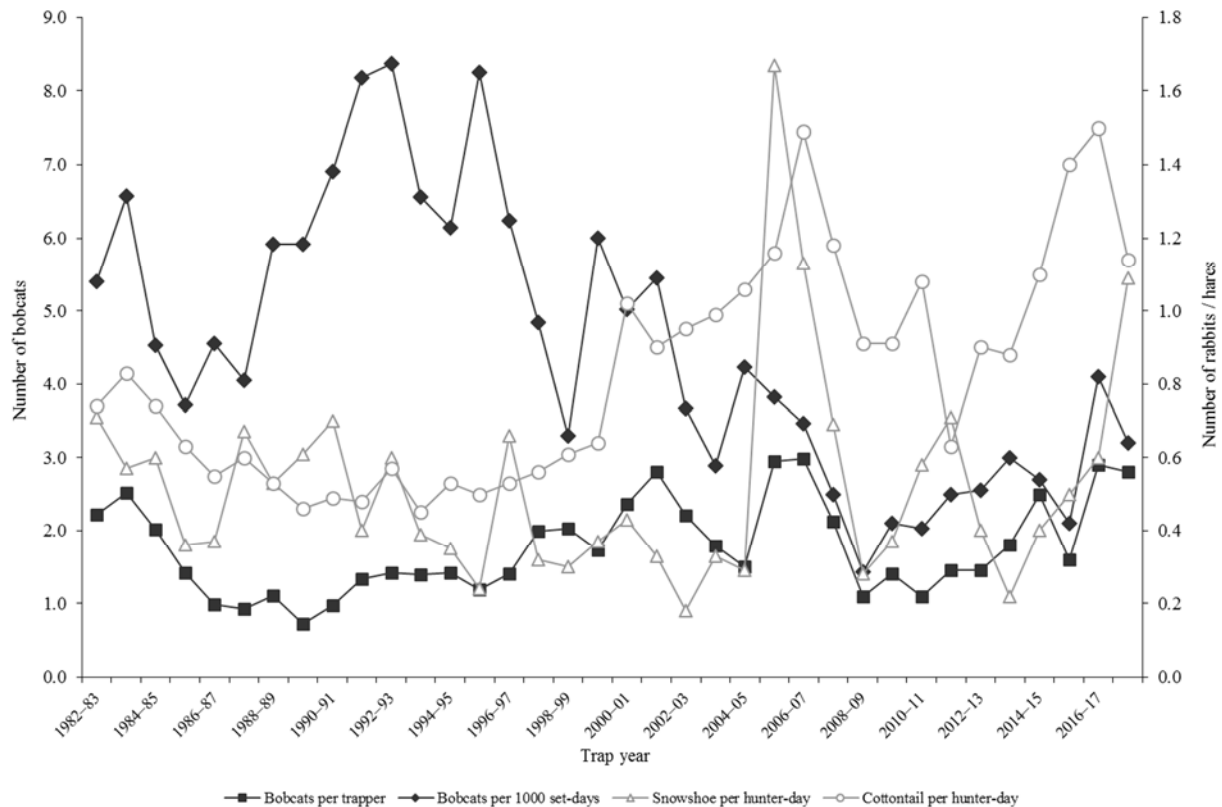
*Statewide totals for sample size and hunters afield are not totals of the columns because hunters hunted multiple counties.

**Total harvest numbers are from pelt check-in, while numbers of hunters afield and effort are determined from harvest survey.

Prey index

Lagomorph densities are generally considered to be a good indicator of bobcat recruitment and survival because high lagomorph populations provide an essential prey base for dispersing bobcats. When lagomorph populations are high or increasing, the bobcat population has also increased or at least remained stable. Thus, low populations of lagomorphs will reduce the likelihood of younger bobcats surviving to the next year. Cottontail rabbit and snowshoe hare data are taken from the Utah Upland Game Annual Report 2017–18 (2017–18 seasons).

Relationships in harvest statistics between bobcat and prey, Utah 1982–2018.



Population trends

Bobcat harvest age and sex ratios, Utah 1985–2018.

Trap year	Kittens / adult female	Kittens / adult	Male kittens / female kittens	Juveniles / adult	Juv. males / juv. females	Proportion juveniles in harvest	Proportion females in harvest	Males / females
1985–86	0.5	0.2	1.0	—	—	—	—	1.2
1986–87	0.7	0.3	0.9	—	—	—	—	1.1
1987–88	1.2	0.5	1.0	—	—	—	—	1.1
1988–89	1.1	0.4	1.1	—	—	—	—	1.3
1989–90	0.8	0.3	1.0	—	—	—	—	1.4
1990–91	0.8	0.3	0.6	—	—	—	—	1.2
1991–92	0.9	0.7	1.3	—	—	—	—	1.5
1992–93	0.9	1.0	1.2	—	—	—	—	1.4
1993–94	1.6	0.6	1.0	—	—	—	—	1.3
1994–95	0.6	0.6	1.1	0.6	1.1	0.36	0.44	1.3
1995–96	1.4	0.5	0.7	0.5	1.0	0.35	0.44	1.3
1996–97	1.9	0.7	1.1	0.7	1.1	0.41	0.41	1.4
1997–98	1.2	0.4	0.9	0.4	0.9	0.30	0.42	1.4
1998–99	2.1	0.8	1.1	—	—	—	—	1.3
1999–00	0.8	0.3	1.0	1.0	1.4	0.50	0.39	1.6
2000–01	0.7	0.3	1.1	0.9	1.3	0.47	0.39	1.6
2001–02	0.4	0.2	1.0	0.6	1.2	0.38	0.41	1.4
2002–03	0.4	0.2	0.9	0.4	1.0	0.28	0.45	1.2
2003–04	0.6	0.3	0.9	0.5	1.0	0.31	0.47	1.1
2004–05	0.8	0.3	0.8	1.2	1.1	0.55	0.44	1.3
2005–06	5.8	2.5	1.4	2.5	1.4	0.72	0.43	1.4
2006–07	4.1	1.5	1.4	1.5	1.4	0.60	0.43	1.3
2007–08	3.0	1.3	1.1	1.4	1.1	0.56	0.43	1.3
2008–09	0.4	0.2	0.8	0.7	1.0	0.42	0.45	1.2
2009–10	0.7	0.3	1.0	0.6	1.2	0.38	0.47	1.1
2010–11	0.6	0.2	1.1	0.5	1.2	0.31	0.43	1.4
2011–12	0.8	0.3	1.1	0.5	1.2	0.35	0.45	1.2
2012–13	0.6	0.3	0.9	0.5	0.9	0.35	0.48	1.1
2013–14	0.9	0.4	0.9	0.8	0.9	0.46	0.45	1.2
2014–15	1.6	0.8	1.0	1.5	1.2	0.60	0.45	1.2
2015–16	1.4	0.6	0.9	1.6	1.4	0.62	0.44	1.3
2016–17	1.4	0.6	0.9	1.8	1.3	0.64	0.41	1.5
2017–18	0.7	0.3	0.7	1.1	1.1	0.52	0.45	1.2
Average	1.2	0.6	1.0	1.0	1.1	0.45	0.44	1.3

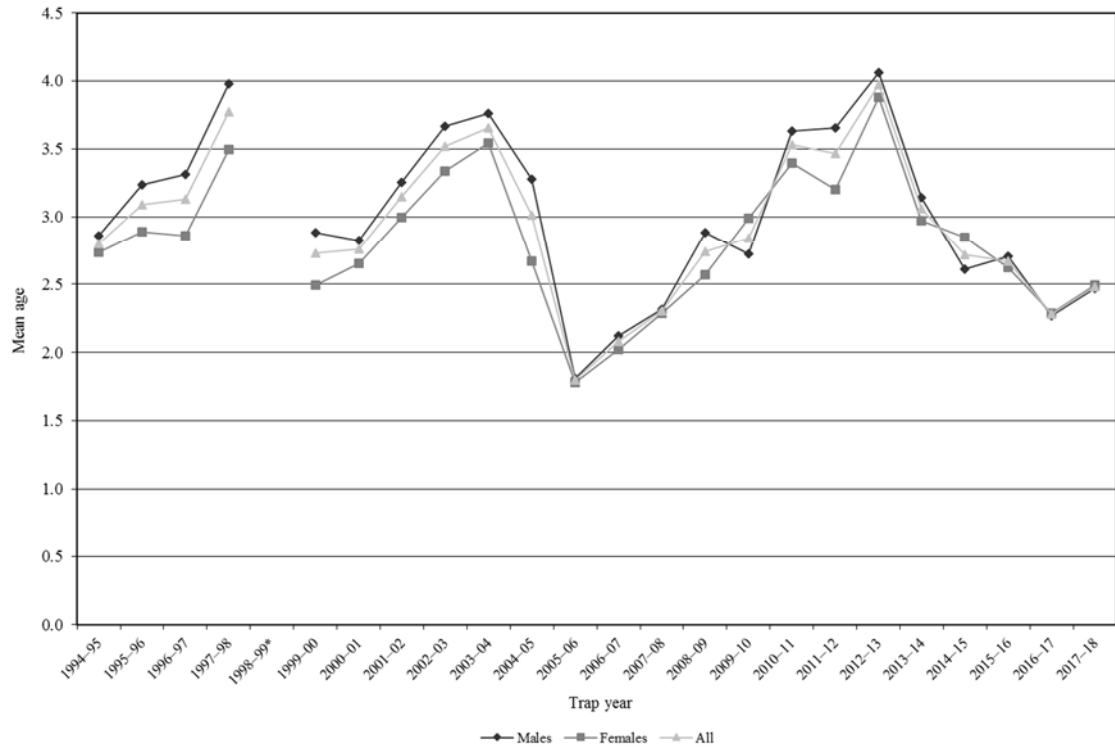
In annual reports prior to 2005–06, the "juvenile" age category referred only to kittens (age 0.5) while "adults" included all bobcats age 1.5 and older. Beginning with the 2005–06 annual report, the term "juvenile" now refers to kittens and yearlings (ages 0.5–1.5), while "adult" includes all bobcats age 2.5 and older.

Adult bobcat survival (from Chapman-Robson estimator), Utah 1985–2018.

Trap year	Survival (%)	95% confidence interval	Chi-square value, degrees of freedom
1985–86	63	60–65	13.2, 9df
1986–87	63	60–65	34.1, 9df
1987–88	65	61–68	19.9, 9df
1988–89	64	60–68	17.3, 8df
1989–90	67	63–71	19.4, 8df
1990–91	58	53–62	28.5, 12df
1991–92	58	55–60	47.9, 14df
1992–93	59	56–63	19.9, 12df
1993–94	54	52–57	34.2, 11df
1994–95	57	54–59	17.2, 14df
1995–96	64	61–66	40.0, 11df
1996–97	68	65–70	23.4, 12df
1997–98	71	69–74	19.1, 14df
1998–99	71	70–73	35.2, 13df
1999–00	66	64–68	41.0, 15df
2000–01	64	62–66	86.0, 11df
2001–02	65	63–67	87.3, 14df
2002–03	67	65–68	175.5, 13df
2003–04	71	70–72	245.6, 12df
2004–05	74	73–76	83.9, 15df
2005–06	68	65–70	15.7, 12df
2006–07	53	48–58	41.9, 9df
2007–08	58	54–62	63.6, 12df
2008–09	57	54–61	64.5, 14df
2009–10	59	56–62	60.1, 12df
2010–11	69	66–71	90.0, 13df
2011–12	70	66–73	22.7, 13df
2012–13	75	72–78	87.2, 11df
2013–14	70	66–74	52.8, 12df
2014–15	74	71–77	62.2, 13df
2015–16	73	70–76	66.6, 13df
2016–17	65	61–68	93.1, 10df
2017–18	57	53–61	89.8, 11df
Average	65	—	—

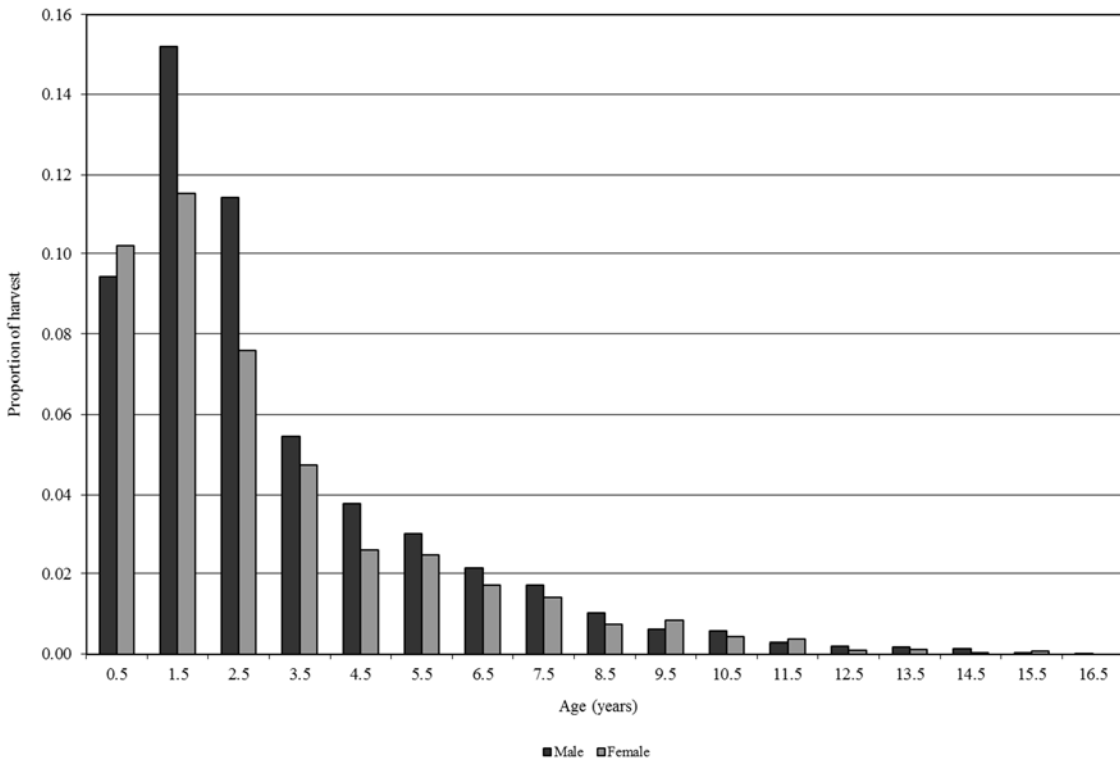
Age structure

Average age of harvested bobcats, Utah 1999–2018.

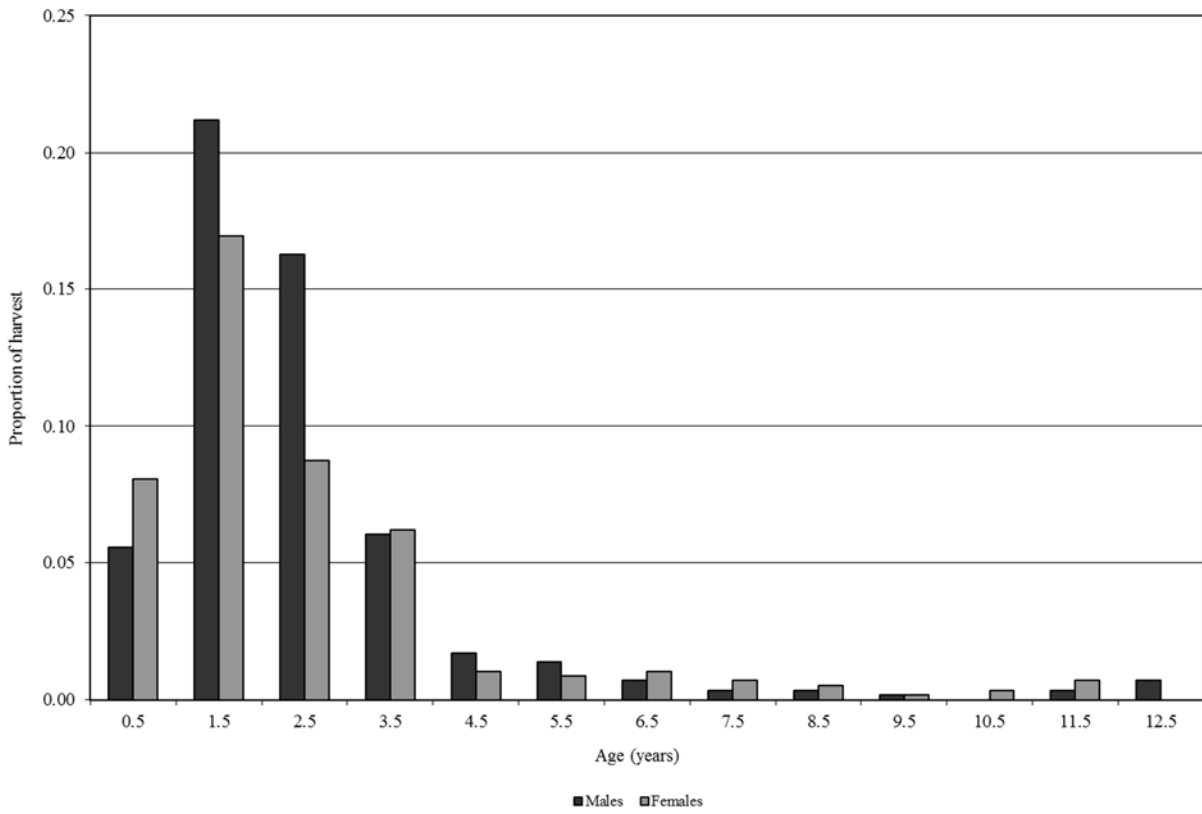


*Excludes age structure data from the 1998–99 trap season.

Average proportion of bobcats harvested by age category, Utah 2006–2017.



Age structure of harvested bobcats, Utah 2017–18.



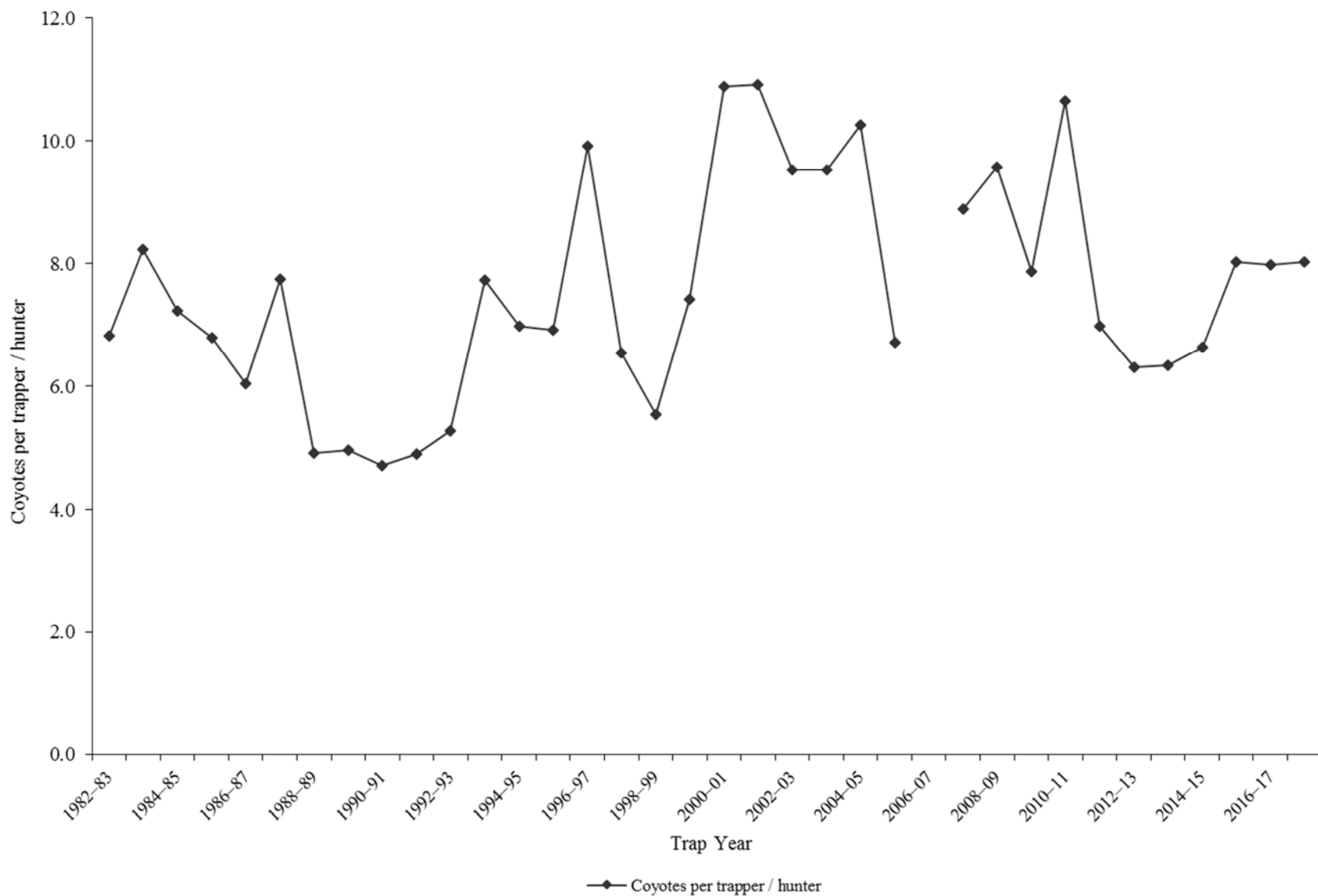
COYOTE

Statewide coyote harvest statistics, Utah 1982–2018.

Trap year	Trappers / hunters afield	Wildlife Services harvest	Incidental harvest	Trap harvest	Hunt harvest	Coyotes per trapper / hunter*	Pelt price (\$)
1982–83	841	4130	—	5738	—	6.8	35.42
1983–84	715	5063	—	5878	—	8.2	25.92
1984–85	828	5427	—	5991	—	7.2	32.35
1985–86	714	5045	—	4851	—	6.8	19.65
1986–87	819	4116	—	4947	—	6.0	33.64
1987–88	893	4338	—	6919	—	7.7	15.55
1988–89	652	4853	—	3200	—	4.9	8.47
1989–90	671	5168	—	3331	—	5.0	8.68
1990–91	389	4444	—	1831	—	4.7	11.41
1991–92	664	4347	—	3255	—	4.9	20.00
1992–93	695	4932	—	3666	—	5.3	15.75
1993–94	679	5827	—	5247	—	7.7	24.58
1994–95	754	3893	—	5267	—	7.0	12.51
1995–96	632	4165	—	4372	—	6.9	15.49
1996–97	405	4484	—	4017	—	9.9	18.73
1997–98	494	4169	—	3228	—	6.5	10.80
1998–99	782	3464	—	4337	—	5.5	10.80
1999–00	473	4534	—	3510	—	7.4	19.14
2000–01	456	4275	—	4966	—	10.9	14.39
2001–02	399	3874	—	4354	—	10.9	16.17
2002–03	572	3394	—	5446	—	9.5	32.62
2003–04	699	3897	—	6660	—	9.5	25.74
2004–05	699	4125	—	7173	—	10.3	20.10
2005–06	630	4820	328	1190	3039	6.7	30.45
2006–07	830	5041	—	—	—	—	26.37
2007–08	859	5618	821	4055	3582	8.9	21.74
2008–09	726	3909	1020	3963	2982	9.6	10.86
2009–10	781	3808	531	3188	2955	7.9	14.80
2010–11	736	4081	292	4356	3480	10.6	25.00
2011–12	705	3444	374	3054	1868	7.0	43.43
2012–13	881	3349	192	3269	2288	6.3	39.56
2013–14	864	2605	312	3162	2310	6.3	37.39
2014–15	971	3099	424	4118	2331	6.6	45.88
2015–16	977	3961	166	4801	3034	8.0	29.63
2016–17	607	3473	285	2244	2595	8.0	37.26
2017–18	635	3024	164	2584	2511	8.0	37.31
Average	698	4228	409	4233	2748	7.5	23.54

*Coyotes per trapper / hunter does not include Wildlife Services harvest.

Statewide coyote harvest trends, Utah 1982–2018.



Coyote trapping harvest statistics by county and ecoregion, Utah 2017–18.

County	n	Trappers afield	Trap harvest	Traps set	Trapping days	Set-days	Set-days / coyote	Coyotes / 1000 set-days	Coyotes / trapper
Beaver	9	21	169	324	1393	20851	123.5	8.1	8.0
Box Elder	18	42	188	509	1782	21899	116.7	8.6	4.4
Iron	5	12	63	260	381	3341	52.8	18.9	5.4
Juab	7	16	141	460	521	17111	121.6	8.2	8.6
Millard	11	26	120	328	1646	28162	235.5	4.2	4.6
Tooele	8	19	82	256	739	11373	138.6	7.2	4.4
Great Basin totals	58	136	763	2136	6461	102737	134.8	7.4	5.6
Cache	6	14	59	157	507	6913	117.9	8.5	4.2
Davis	2	5	45	61	110	2192	49.2	20.3	9.5
Morgan	2	5	9	38	108	929	99.0	10.1	2.0
Piute	2	5	35	47	281	2814	80.0	12.5	7.5
Rich	3	7	19	143	492	12029	641.3	1.6	2.7
Salt Lake	1	2	2	9	211	844	360.0	2.8	1.0
Sanpete	4	9	38	122	1379	17718	472.3	2.1	4.0
Sevier	18	42	321	701	2883	66062	205.6	4.9	7.6
Summit	3	7	12	75	166	1881	160.4	6.2	1.7
Utah	20	47	166	633	2103	29072	174.6	5.7	3.6
Wasatch	3	7	7	52	258	2486	353.3	2.8	1.0
Weber	5	12	40	94	181	2511	63.0	15.9	3.4
Rocky Mountain totals	69	162	753	2132	8679	145451	193.2	5.2	4.7
Daggett	4	9	23	143	450	7562	322.5	3.1	2.5
Duchesne	15	35	152	643	1759	35570	233.4	4.3	4.3
Uintah	18	42	106	533	1695	27803	263.5	3.8	2.5
Uintah Basin totals	37	87	281	1319	3904	70935	252.1	4.0	3.2
Carbon	3	7	12	61	166	1552	132.4	7.6	1.7
Emery	2	5	82	197	352	13507	164.6	6.1	17.5
Garfield	5	12	75	164	457	5370	71.6	14.0	6.4
Grand	5	12	40	134	324	4003	100.4	10.0	3.4
Kane	4	9	145	413	521	10988	75.6	13.2	15.5
San Juan	8	19	108	305	1538	24917	231.0	4.3	5.8
Washington	15	35	251	476	1020	11727	46.7	21.4	7.1
Wayne	4	9	52	136	403	10109	196.0	5.1	5.5
Colorado Plateau totals	46	108	765	1885	4781	82173	107.5	9.3	7.1
Unknown	2	5	23	234	251	12545	535.0	1.9	5.0
Statewide totals*	185	434	2584	7707	24077	413842	160.2	6.2	6.0

*Statewide totals for sample size and trappers afield are not totals of the columns because trappers trapped multiple counties.

Coyote hunting harvest statistics by county and ecoregion, Utah 2017–18.

County	n	Hunters afield	Hunt harvest	Hunter-days afield	Hunter-days / coyote	Coyotes / hunter
Beaver	9	21	68	183	2.7	3.2
Box Elder	25	59	579	689	1.2	9.9
Iron	5	12	16	84	5.1	1.4
Juab	8	19	164	354	2.2	8.8
Millard	18	42	206	652	3.2	4.9
Tooele	13	30	66	624	9.5	2.2
Great Basin totals	78	183	1100	2586	2.4	6.0
Cache	12	28	192	184	1.0	6.8
Davis	4	9	52	42	0.8	5.5
Morgan	2	5	0	9	—	0.0
Piute	3	7	23	176	7.5	3.3
Rich	5	12	16	162	9.9	1.4
Salt Lake	11	26	77	504	6.5	3.0
Sanpete	7	16	94	364	3.9	5.7
Sevier	2	5	5	9	2.0	1.0
Summit	12	28	110	420	3.8	3.9
Utah	3	7	5	26	5.5	0.7
Wasatch	7	16	115	415	3.6	7.0
Weber	1	2	7	14	2.0	3.0
Rocky Mountain totals	69	162	696	2326	3.3	4.3
Daggett	2	5	2	138	59.0	0.5
Duchesne	13	30	75	696	9.3	2.5
Uintah	15	35	106	244	2.3	3.0
Uintah Basin totals	30	70	183	1079	5.9	2.6
Carbon	6	14	45	115	2.6	3.2
Emery	5	12	145	84	0.6	12.4
Garfield	6	14	106	354	3.4	7.5
Grand	4	9	35	227	6.5	3.8
Kane	3	7	45	108	2.4	6.3
San Juan	8	19	68	205	3.0	3.6
Washington	3	7	28	63	2.3	4.0
Wayne	5	12	61	94	1.5	5.2
Colorado Plateau totals	40	94	532	1251	2.3	5.7
Unknown	0	0	—	—	—	—
Statewide totals*	139	326	2511	7241	2.9	7.7

*Statewide totals for sample size and hunters afield are not totals of the columns because hunters hunted multiple counties.

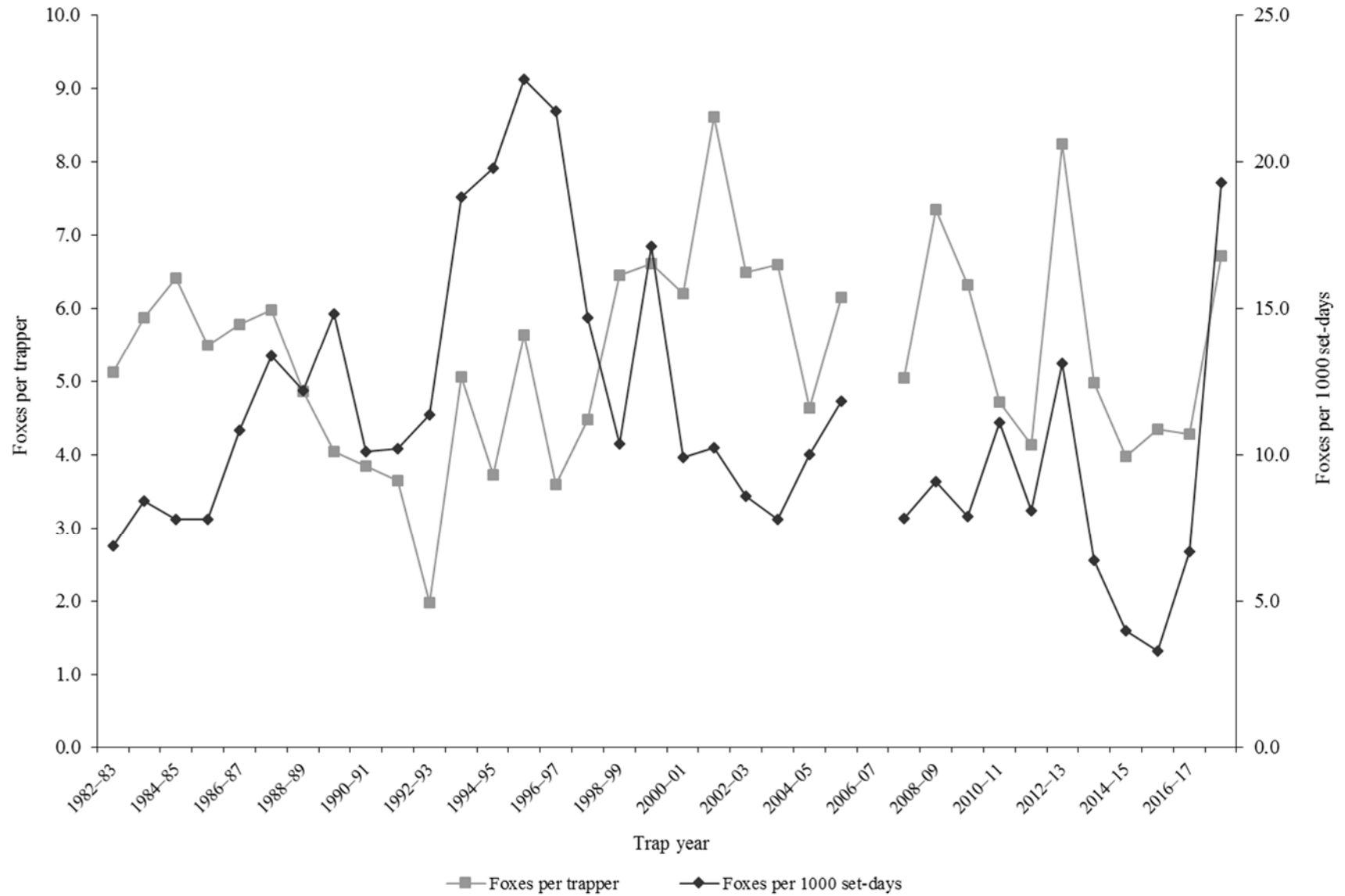
GRAY FOX

Statewide gray fox harvest statistics*, Utah 1982–2018.

Trap year	Trappers afield	Incidental harvest	Trap harvest	Hunt harvest	Set-days / fox	Foxes / 1000 set-days	Foxes / trapper	Pelt price (\$)
1982–83	263	—	1346	—	145	6.9	5.1	27.75
1983–84	233	—	1367	—	119	8.4	5.9	25.13
1984–85	305	—	1954	—	128	7.8	6.4	24.64
1985–86	256	—	1407	—	128	7.8	5.5	15.03
1986–87	252	—	1457	—	92	10.8	5.8	25.29
1987–88	273	—	1633	—	75	13.4	6.0	21.91
1988–89	226	—	1099	—	82	12.2	4.9	13.50
1989–90	233	—	941	—	68	14.8	4.0	6.19
1990–91	65	—	250	—	99	10.1	3.8	8.24
1991–92	110	—	402	—	98	10.2	3.7	6.87
1992–93	214	—	422	—	88	11.4	2.0	7.08
1993–94	136	—	687	—	53	18.8	5.1	12.00
1994–95	207	—	771	—	51	19.8	3.7	9.62
1995–96	147	—	828	—	44	22.8	5.6	10.65
1996–97	102	—	367	—	46	21.7	3.6	11.60
1997–98	87	—	389	—	68	14.7	4.5	7.76
1998–99	135	—	870	—	96	10.4	6.4	6.96
1999–00	140	—	925	—	58	17.1	6.6	6.62
2000–01	187	—	1159	—	101	9.9	6.2	8.00
2001–02	154	—	1326	—	98	10.2	8.6	11.58
2002–03	299	—	1942	—	116	8.6	6.5	12.47
2003–04	265	—	1749	—	128	7.8	6.6	10.84
2004–05	203	—	942	—	100	10.0	4.6	13.81
2005–06	98	—	603	—	85	11.8	6.2	24.15
2006–07	252	—	—	—	—	—	—	37.25
2007–08	217	—	1093	—	127	7.9	5.0	39.19
2008–09	238	—	1747	—	110	9.1	7.3	17.07
2009–10	163	361	1031	—	126	7.9	6.3	16.56
2010–11	138	292	651	—	90	11.1	4.7	20.97
2011–12	125	485	474	43	124	8.1	4.1	23.13
2012–13	130	216	1069	3	77	13.1	8.2	31.15
2013–14	172	462	843	13	155	6.4	5.0	24.18
2014–15	123	525	490	0	249	4.0	4.0	16.16
2015–16	151	450	623	33	299	3.3	4.3	10.75
2016–17	84	267	356	3	150	6.7	4.3	15.42
2017–18	101	389	664	14	52	19.3	6.7	8.98
Average	180	383	968	16	106	11.3	5.4	16.35

*Trappers and foxes per trapper include hunters and their harvest. Set-days per fox and foxes per 1000 set-days are based only on trapping activity, and do not include hunt harvest or hunter-days afield.

Statewide gray fox harvest trends, Utah 1982–2018.



Gray fox trapping harvest statistics by county and ecoregion, Utah 2017–18.

County	n	Trappers afield	Trap harvest	Traps set	Trapping days	Set-days	Set-days / fox	Foxes / 1000 set-days	Foxes / trapper
Beaver	2	5	5	7	35	63	13.5	74.1	1.0
Box Elder	0	0	—	—	—	—	—	—	—
Iron	5	12	75	251	234	1817	24.2	41.3	6.4
Juab	0	0	—	—	—	—	—	—	—
Millard	0	0	—	—	—	—	—	—	—
Tooele	0	0	—	—	—	—	—	—	—
Great Basin totals	7	16	80	258	270	1881	23.6	42.4	4.9
Cache	0	0	—	—	—	—	—	—	—
Davis	0	0	—	—	—	—	—	—	—
Morgan	0	0	—	—	—	—	—	—	—
Piute	1	2	0	7	33	98	—	0.0	0.0
Rich	0	0	—	—	—	—	—	—	—
Salt Lake	0	0	—	—	—	—	—	—	—
Sanpete	0	0	—	—	—	—	—	—	—
Sevier	0	0	—	—	—	—	—	—	—
Summit	0	0	—	—	—	—	—	—	—
Utah	2	5	2	33	150	788	336.0	3.0	0.5
Wasatch	1	2	0	21	19	169	—	0.0	0.0
Weber	0	0	—	—	—	—	—	—	—
Rocky Mountain totals	4	9	2	61	202	1055	450.0	2.2	0.3
Daggett	0	0	—	—	—	—	—	—	—
Duchesne	3	7	66	145	422	9004	137.1	7.3	9.3
Uintah	2	5	30	56	157	2880	94.5	10.6	6.5
Uintah Basin totals	5	12	96	202	579	11884	123.6	8.1	8.2
Carbon	1	2	2	2	5	5	2.0	500.0	1.0
Emery	0	0	—	—	—	—	—	—	—
Garfield	1	2	12	47	94	1876	160.0	6.3	5.0
Grand	2	5	14	12	49	148	10.5	95.2	3.0
Kane	8	19	218	253	910	10547	48.4	20.7	11.6
San Juan	3	7	49	89	246	3939	80.0	12.5	7.0
Washington	7	16	176	284	211	1686	9.6	104.3	10.7
Wayne	1	2	5	16	0	0	0.0	—	2.0
Colorado Plateau totals	23	54	476	703	1515	18201	38.2	26.2	8.8
Unknown	1	2	9	117	28	1407	150.0	6.7	4.0
Statewide totals*	38	89	664	1341	2593	34428	51.9	19.3	7.4

*Statewide totals for sample size and trappers afield are not totals of the columns because trappers trapped multiple counties.

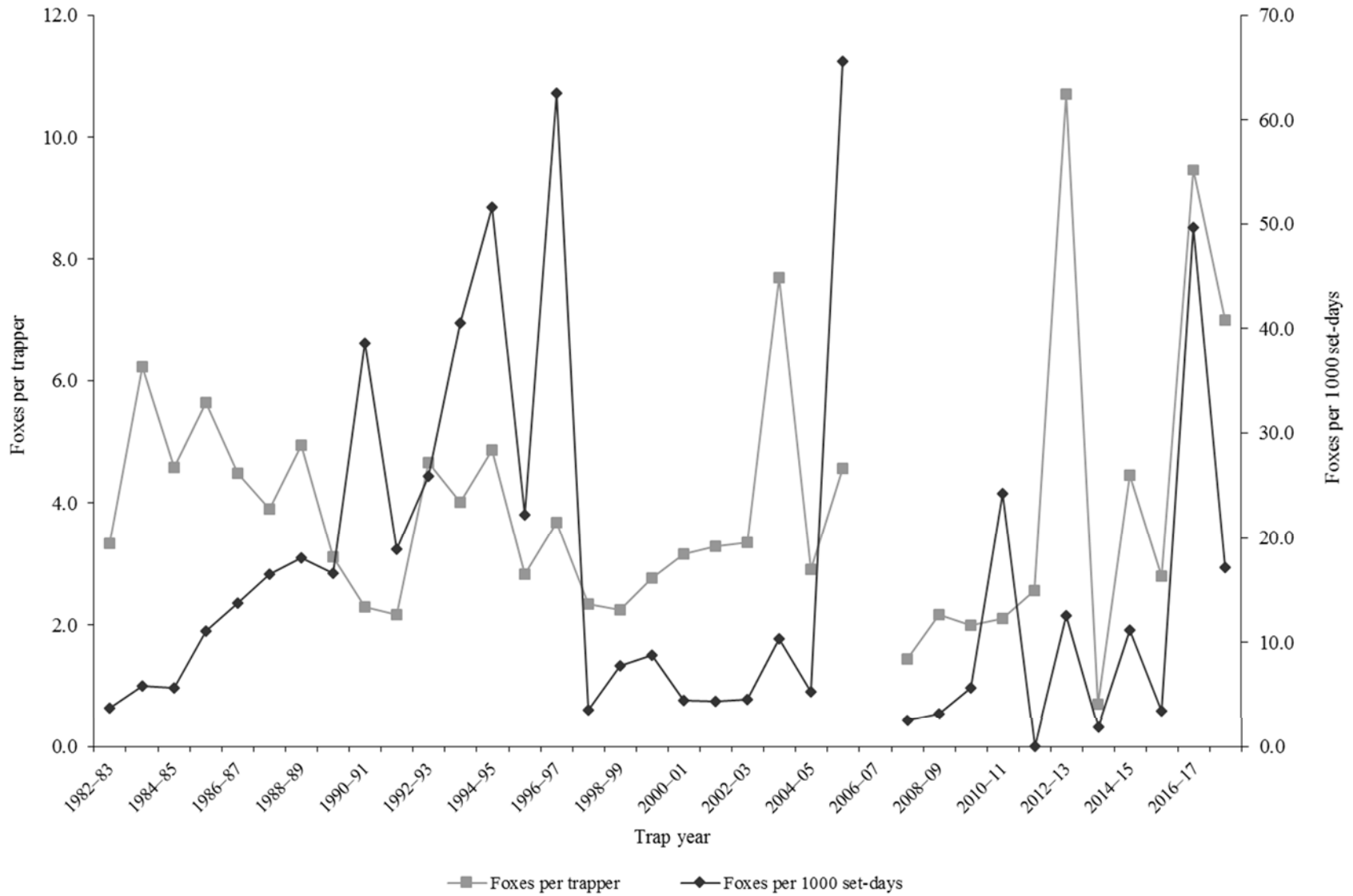
KIT FOX

Statewide kit fox harvest statistics*, Utah 1982–2018.

Trap year	Trappers afield	Incidental harvest	Trap harvest	Hunt harvest	Set-days / fox	Foxes / 1000 set-days	Foxes / trapper	Pelt price (\$)
1982–83	109	—	363	—	267	3.7	3.3	11.39
1983–84	112	—	698	—	171	5.8	6.2	11.99
1984–85	142	—	651	—	178	5.6	4.6	11.17
1985–86	108	—	609	—	90	11.1	5.6	7.50
1986–87	122	—	547	—	73	13.7	4.5	9.90
1987–88	138	—	538	—	61	16.5	3.9	10.69
1988–89	130	—	643	—	55	18.1	4.9	6.98
1989–90	117	—	365	—	60	16.6	3.1	3.19
1990–91	81	—	186	—	26	38.6	2.3	4.67
1991–92	86	—	187	—	53	18.9	2.2	2.78
1992–93	41	—	191	—	39	25.9	4.7	4.30
1993–94	75	—	301	—	25	40.6	4.0	4.69
1994–95	109	—	531	—	19	51.6	4.9	6.45
1995–96	77	—	218	—	45	22.2	2.8	6.25
1996–97	44	—	162	—	16	62.5	3.7	6.77
1997–98	41	—	96	—	282	3.5	2.3	3.50
1998–99	75	—	168	—	128	7.8	2.2	7.31
1999–00	66	—	183	—	114	8.8	2.8	2.90
2000–01	51	—	161	—	227	4.4	3.2	6.13
2001–02	52	—	171	—	229	4.4	3.3	10.72
2002–03	90	—	302	—	221	4.5	3.4	5.44
2003–04	83	—	638	—	97	10.4	7.7	5.38
2004–05	89	—	259	—	191	5.2	2.9	8.98
2005–06	40	—	183	—	15	65.6	4.6	10.92
2006–07	65	—	—	—	—	—	—	10.50
2007–08	27	—	39	—	392	2.6	1.4	7.87
2008–09	48	—	104	—	314	3.2	2.2	7.61
2009–10	19	13	38	—	177	5.6	2.0	9.47
2010–11	20	3	42	—	41	24.2	2.1	12.68
2011–12	18	64	0	46	—	0.0	2.6	14.49
2012–13	31	41	315	17	80	12.6	10.7	14.37
2013–14	10	7	7	0	515	1.9	0.7	14.32
2014–15	22	47	95	3	90	11.2	4.5	7.13
2015–16	29	18	37	44	296	3.4	2.8	6.54
2016–17	13	31	123	0	20	49.7	9.5	10.32
2017–18	2	30	14	0	58	17.2	7.0	6.60
Average	66	28	262	16	137	17.1	4.0	8.11

*Trappers and foxes per trapper include hunters and their harvest. Set-days per fox and foxes per 1000 set-days are based only on trapping activity, and do not include hunt harvest or hunter-days afield.

Statewide kit fox harvest trends, Utah 1982–2018.



MARTEN

Statewide marten harvest statistics, Utah 1982–1999.

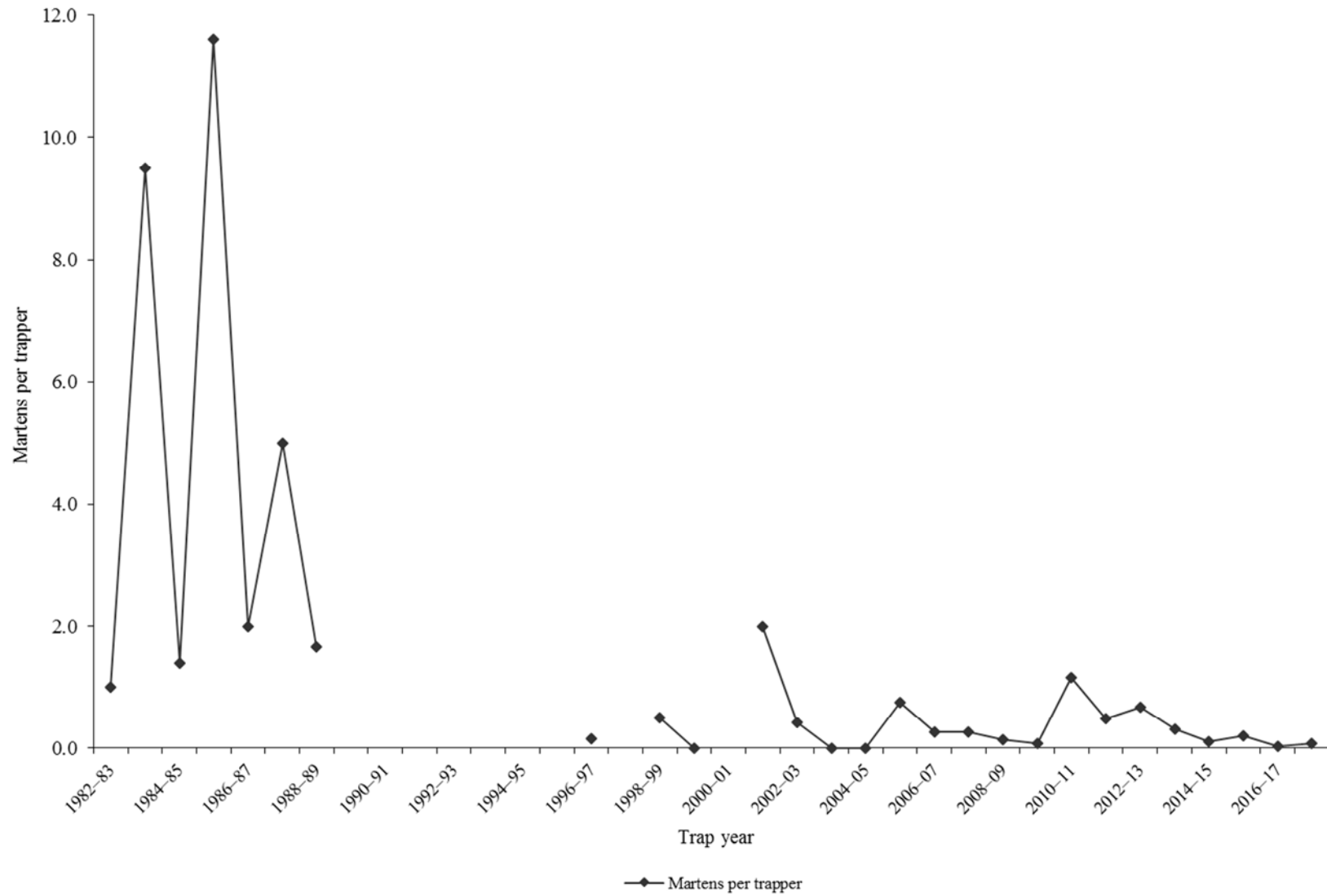
Trap year	Trappers afield	Trap / hunt harvest	Set-days	Set-days / marten	Martens / 1000 set-days	Martens / trapper	Pelt price (\$)
1982–83	1	1	6	6	166.7	1.0	10.00
1983–84	9	84	4704	56	17.9	9.5	20.00
1984–85	9	12	6516	543	1.8	1.4	24.00
1985–86	10	121	7381	61	16.4	11.6	23.00
1986–87	11	22	8558	389	2.6	2.0	25.68
1987–88	10	50	9750	195	5.1	5.0	40.00
1988–89	6	10	1210	121	8.3	1.7	31.00
1989–90	—	—	—	—	—	—	—
1990–91	—	—	—	—	—	—	—
1991–92	—	—	—	—	—	—	—
1992–93	—	—	—	—	—	—	—
1993–94	—	—	—	—	—	—	—
1994–95	—	—	—	—	—	—	—
1995–96	—	—	—	—	—	—	—
1996–97	13	2	—	—	—	0.2	20.00
1997–98	—	—	—	—	—	—	11.00
1998–99	12	6	1228	205	4.9	0.5	7.11
Average	9	34	4919	197	28.0	3.6	21.18

Statewide marten harvest statistics, Utah 1999–2018.

Trap year	Permits sold	Successful trappers	Male harvest	Female harvest	Unknown harvest	Total harvest	Success rate (%)*	Martens / trapper*
1999–00	5	0	0	0	0	0	0.0	0.0
2000–01	—	1	3	3	0	6	—	—
2001–02	11	2	16	6	0	22	18.2	2.0
2002–03	12	1	3	2	0	5	8.3	0.4
2003–04	18	0	0	0	0	0	0.0	0.0
2004–05	12	0	0	0	0	0	0.0	0.0
2005–06	16	2	7	4	1	12	12.5	0.8
2006–07	26	3	6	1	0	7	11.5	0.3
2007–08	22	4	7	14	0	21	18.2	1.0
2008–09	28	1	2	2	0	4	3.6	0.1
2009–10	25	1	2	0	0	2	4.0	0.1
2010–11	31	2	24	12	0	36	6.5	1.2
2011–12	29	3	7	3	4	14	10.3	0.5
2012–13	39	3	15	5	6	26	7.7	0.7
2013–14	51	6	13	3	0	16	11.8	0.3
2014–15	202	2	16	6	0	22	1.0	0.1
2015–16	46	1	5	4	0	9	2.2	0.2
2016–17	89	2	2	0	0	2	2.2	0.0
2017–18	184	3	11	4	0	15	1.6	0.1
Average	47	2	8	3	1	12	6.6	0.4

*Assumption: Every person who possessed a marten permit trapped or hunted.

Statewide marten harvest trends, Utah 1982–2018.



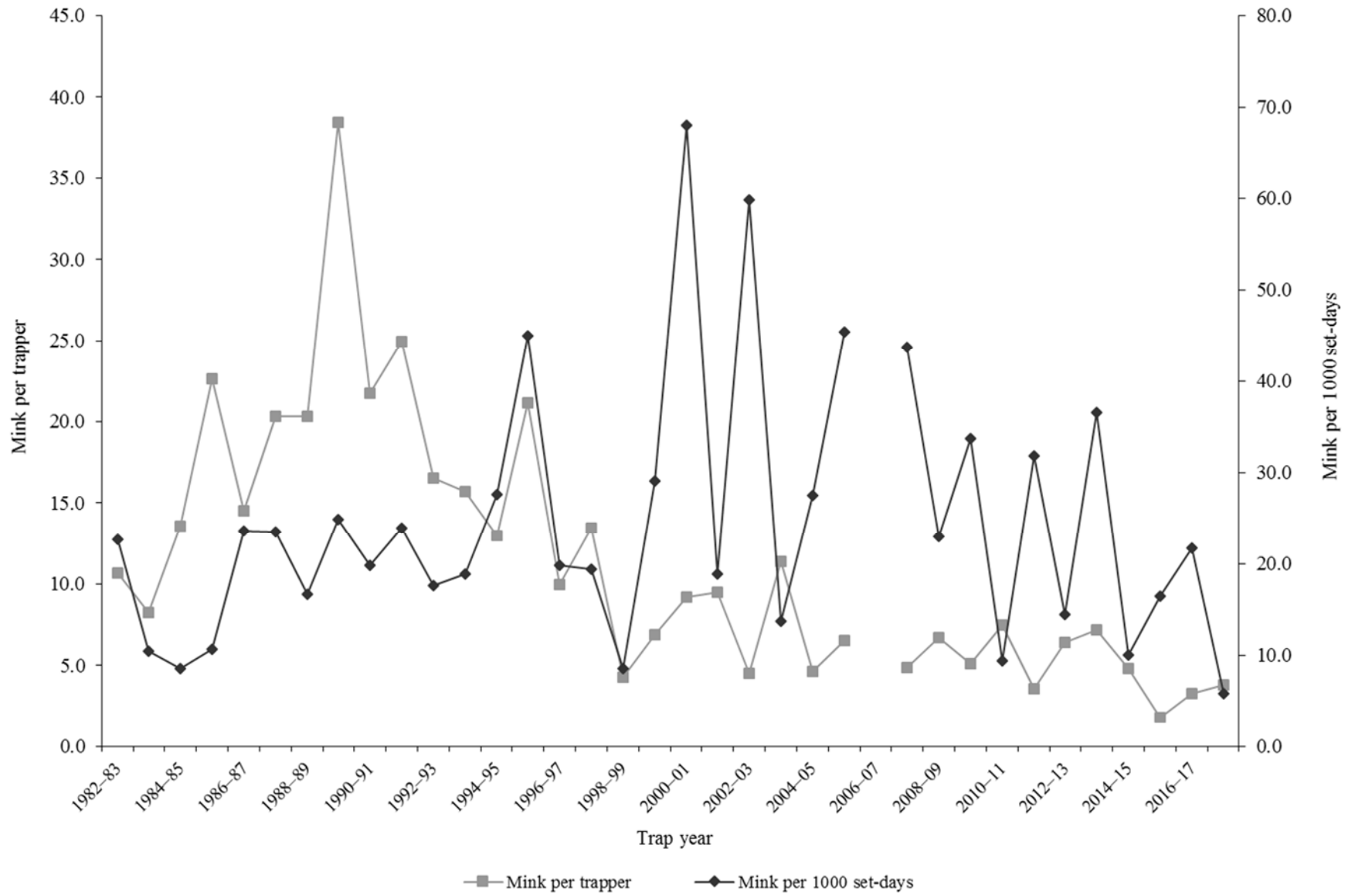
MINK

Statewide mink harvest statistics*, Utah 1982–2018.

Trap year	Trappers afield	Incidental harvest	Trap harvest	Hunt harvest	Set-days / mink	Minks / 1000 set-days	Minks / trapper	Pelt price (\$)
1982–83	38	—	405	—	44	22.7	10.7	10.85
1983–84	46	—	379	—	95	10.5	8.2	9.13
1984–85	40	—	542	—	117	8.6	13.6	10.27
1985–86	37	—	837	—	94	10.7	22.6	6.00
1986–87	57	—	828	—	42	23.6	14.5	10.63
1987–88	51	—	1037	—	42	23.6	20.3	12.25
1988–89	42	—	854	—	60	16.6	20.3	10.69
1989–90	29	—	1114	—	40	24.8	38.4	6.30
1990–91	25	—	543	—	50	19.8	21.7	6.33
1991–92	29	—	723	—	42	23.9	24.9	6.81
1992–93	23	—	380	—	57	17.6	16.5	7.50
1993–94	30	—	472	—	53	18.9	15.7	8.41
1994–95	27	—	350	—	36	27.6	13.0	8.38
1995–96	25	—	529	—	22	45.0	21.2	10.40
1996–97	27	—	269	—	50	19.8	10.0	10.95
1997–98	25	—	337	—	51	19.4	13.5	5.81
1998–99	81	—	345	—	116	8.6	4.3	7.11
1999–00	61	—	419	—	34	29.1	6.9	6.07
2000–01	51	—	468	—	15	68.1	9.2	4.92
2001–02	30	—	284	—	53	18.8	9.5	5.20
2002–03	59	—	268	—	17	59.8	4.5	2.07
2003–04	59	—	673	—	73	13.7	11.4	8.00
2004–05	68	—	317	—	36	27.5	4.7	8.98
2005–06	34	—	222	—	22	45.4	6.5	9.97
2006–07	65	—	—	—	—	—	—	7.94
2007–08	38	—	186	—	23	43.7	4.9	9.33
2008–09	36	—	242	—	44	22.9	6.7	5.96
2009–10	66	57	338	—	30	33.7	5.1	8.00
2010–11	65	151	485	—	107	9.4	7.5	11.27
2011–12	43	61	153	7	31	31.8	3.6	15.08
2012–13	110	147	706	14	70	14.4	6.4	19.18
2013–14	115	186	826	0	27	36.6	7.2	16.21
2014–15	54	82	259	0	100	10.0	4.8	8.57
2015–16	74	55	133	0	61	16.4	1.8	4.22
2016–17	60	29	196	21	46	21.7	3.3	7.52
2017–18	59	47	225	0	173	5.8	3.8	3.00
Average	49	91	467	6	56	24.3	11.3	8.59

*Trappers and minks per trapper include hunters and their harvest. Set-days per mink and minks per 1000 set-days are based only on trapping activity, and do not include hunt harvest or hunter-days afield.

Statewide mink harvest trends, Utah 1982–2018.



Mink harvest statistics by county and ecoregion, Utah 2017–18.

County	n	Trappers afield	Trap harvest	Traps set	Trapping days	Set-days	Set-days / mink	Mink / 1000 set-days	Mink / trapper
Beaver	0	0	—	—	—	—	—	—	—
Box Elder	1	2	2	7	16	49	21.0	47.6	1.0
Iron	0	0	—	—	—	—	—	—	—
Juab	0	0	—	—	—	—	—	—	—
Millard	0	0	—	—	—	—	—	—	—
Tooele	0	0	—	—	—	—	—	—	—
Great Basin totals	1	2	2	7	16	49	21.0	47.6	1.0
Cache	6	14	87	270	689	24701	284.7	3.5	6.2
Davis	0	0	—	—	—	—	—	—	—
Morgan	1	2	2	28	70	844	360.0	2.8	1.0
Piute	0	0	—	—	—	—	—	—	—
Rich	0	0	—	—	—	—	—	—	—
Salt Lake	1	2	0	2	2	2	—	0.0	0.0
Sanpete	0	0	—	—	—	—	—	—	—
Sevier	1	2	47	23	70	703	15.0	66.7	20.0
Summit	1	2	9	5	150	300	32.0	31.3	4.0
Utah	4	9	9	35	145	572	61.0	16.4	1.0
Wasatch	2	5	9	26	230	591	63.0	15.9	2.0
Weber	0	0	—	—	—	—	—	—	—
Rocky Mountain totals	16	38	163	389	1358	27714	168.8	5.9	4.4
Daggett	0	0	—	—	—	—	—	—	—
Duchesne	1	2	5	12	47	234	50.0	20.0	2.0
Uintah	5	12	2	49	345	1292	551.0	1.8	0.2
Uintah Basin totals	6	14	7	61	392	1527	217.0	4.6	0.5
Carbon	1	2	5	28	211	2533	540.0	1.9	2.0
Emery	0	0	—	—	—	—	—	—	—
Garfield	0	0	—	—	—	—	—	—	—
Grand	0	0	—	—	—	—	—	—	—
Kane	0	0	—	—	—	—	—	—	—
San Juan	0	0	—	—	—	—	—	—	—
Washington	0	0	—	—	—	—	—	—	—
Wayne	2	5	47	96	178	7037	150.1	6.7	10.0
Colorado Plateau totals	3	7	52	124	389	9570	185.5	5.4	7.3
Unknown	0	0	—	—	—	—	—	—	—
Statewide totals*	25	59	225	582	2155	38860	172.6	5.8	3.8

*Statewide totals for sample size and trappers afield are not totals of the columns because trappers trapped multiple counties

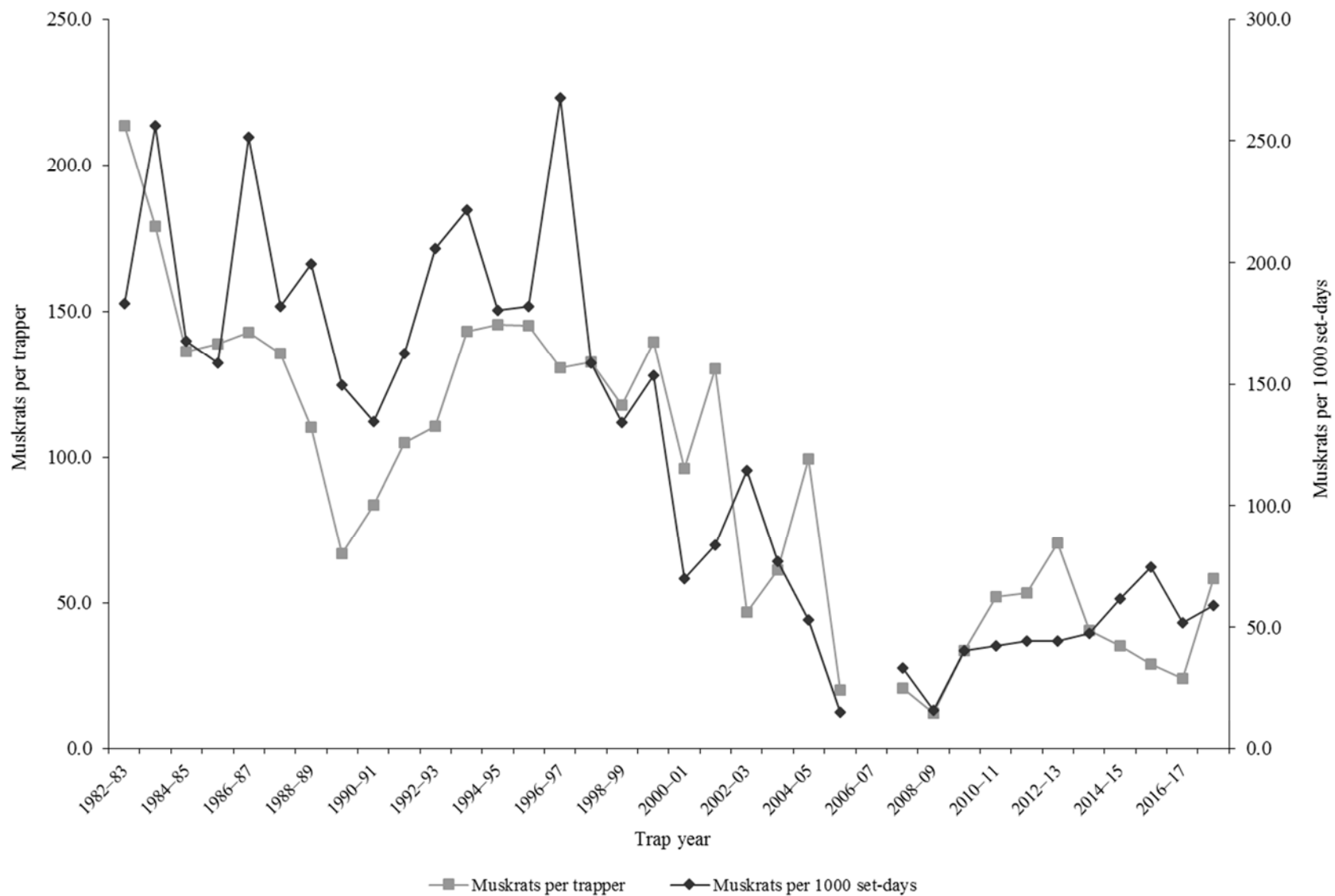
MUSKRAT

Statewide muskrat harvest statistics*, Utah 1982–2018.

Trap year	Trappers afield	Incidental harvest	Trap harvest	Hunt harvest	Set-days / muskrat	Musk rats / 1000 set-days	Musk rats / trapper	Pelt price (\$)
1982–83	258	—	55137	—	5	183.1	213.7	2.16
1983–84	309	—	55298	—	4	256.2	179.0	2.46
1984–85	400	—	54526	—	6	168.1	136.3	2.45
1985–86	282	—	39195	—	6	158.9	139.0	1.86
1986–87	416	—	59368	—	4	251.7	142.7	2.66
1987–88	432	—	58560	—	5	182.2	135.6	2.46
1988–89	303	—	33400	—	5	199.4	110.2	1.40
1989–90	253	—	16898	—	7	149.6	66.8	0.89
1990–91	85	—	7102	—	7	134.6	83.6	0.91
1991–92	186	—	19547	—	6	162.7	105.1	1.60
1992–93	105	—	11623	—	5	205.9	110.7	1.18
1993–94	157	—	22488	—	5	221.5	143.2	1.89
1994–95	195	—	28369	—	6	180.5	145.5	1.74
1995–96	181	—	26260	—	5	182.2	145.1	2.09
1996–97	179	—	23371	—	4	267.9	130.6	3.59
1997–98	203	—	26907	—	6	158.7	132.5	2.01
1998–99	186	—	21895	—	7	134.1	117.7	1.73
1999–00	151	—	21086	—	7	153.7	139.6	1.00
2000–01	108	—	10376	—	14	69.8	96.1	1.58
2001–02	115	—	14979	—	12	84.0	130.3	2.60
2002–03	135	—	6334	—	9	114.6	46.9	1.59
2003–04	176	—	10777	—	13	77.0	61.2	1.57
2004–05	151	—	15016	—	19	53.1	99.4	1.57
2005–06	41	0	824	—	66	15.3	20.1	3.97
2006–07	81	—	—	—	—	—	—	3.31
2007–08	80	110	1665	—	30	33.3	20.9	3.04
2008–09	98	137	1198	—	63	15.9	12.2	2.49
2009–10	158	164	5341	—	25	40.5	33.8	4.93
2010–11	141	337	7361	—	24	42.2	52.2	5.40
2011–12	150	281	7985	—	23	44.4	53.2	7.28
2012–13	192	117	13534	3	23	44.2	70.5	8.11
2013–14	213	159	8605	0	21	47.5	40.4	8.73
2014–15	168	180	5902	9	16	61.8	35.1	3.76
2015–16	210	41	6130	4	13	74.9	29.2	1.89
2016–17	128	92	3069	3	19	51.8	24.0	3.78
2017–18	122	110	7131	24	17	58.8	58.5	2.91
Average	187	144	20207	7	14	122.3	93.2	2.85

*Trappers and muskrat per trapper include hunters and their harvest. Set-days per muskrat and muskrat per 1000 set-days are based only on trapping activity, and do not include hunt harvest or hunter-days afield.

Statewide muskrat harvest trends, Utah 1982–2018.



Muskrat harvest statistics by county and ecoregion, Utah 2017–18.

County	n	Trappers afield	Trap harvest	Traps set	Trapping days	Set-days	Set-days / muskrat	Musk rats / 1000 set-days	Musk rats / trapper
Beaver	0	0	—	—	—	—	—	—	—
Box Elder	7	17	1274	726	575	29142	22.9	43.7	76.3
Iron	0	0	—	—	—	—	—	—	—
Juab	1	2	117	119	7	358	3.1	326.7	49.0
Millard	0	0	—	—	—	—	—	—	—
Tooele	0	0	—	—	—	—	—	—	—
Great Basin totals	8	19	1391	845	582	29500	21.2	47.2	72.9
Cache	14	33	1854	737	1124	40772	22.0	45.5	55.5
Davis	1	2	597	239	84	8353	14.0	71.4	250.0
Morgan	3	7	86	64	186	1828	21.3	47.0	12.0
Piute	0	0	—	—	—	—	—	—	—
Rich	2	5	119	84	143	2506	21.0	47.6	25.0
Salt Lake	2	5	582	203	177	3938	6.8	147.9	122.0
Sanpete	0	0	—	—	—	—	—	—	—
Sevier	2	5	72	53	200	2978	41.6	24.0	15.0
Summit	2	5	76	19	165	800	10.5	95.5	16.0
Utah	4	10	146	107	296	2568	17.6	56.7	15.3
Wasatch	4	10	883	284	413	13596	15.4	64.9	92.5
Weber	5	12	1243	208	637	14088	11.3	88.3	104.2
Rocky Mountain totals	39	93	5658	1998	3425	91427	16.2	61.9	60.8
Daggett	1	2	5	0	24	0	0.0	—	2.0
Duchesne	1	2	41	12	72	358	8.8	113.3	17.0
Uintah	3	7	36	26	217	795	22.2	45.0	5.0
Uintah Basin totals	5	12	82	38	313	1153	14.2	70.4	6.8
Carbon	0	0	—	—	—	—	—	—	—
Emery	0	0	—	—	—	—	—	—	—
Garfield	0	0	—	—	—	—	—	—	—
Grand	0	0	—	—	—	—	—	—	—
Kane	0	0	—	—	—	—	—	—	—
San Juan	0	0	—	—	—	—	—	—	—
Washington	0	0	—	—	—	—	—	—	—
Wayne	0	0	—	—	—	—	—	—	—
Colorado Plateau totals	0	0	—	—	—	—	—	—	—
Unknown	0	0	—	—	—	—	—	—	—
Statewide totals*	49	117	7131	2881	4320	122080	17.1	58.4	61.0

*Statewide totals for sample size and trappers afield are not totals of the columns because trappers trapped multiple counties.

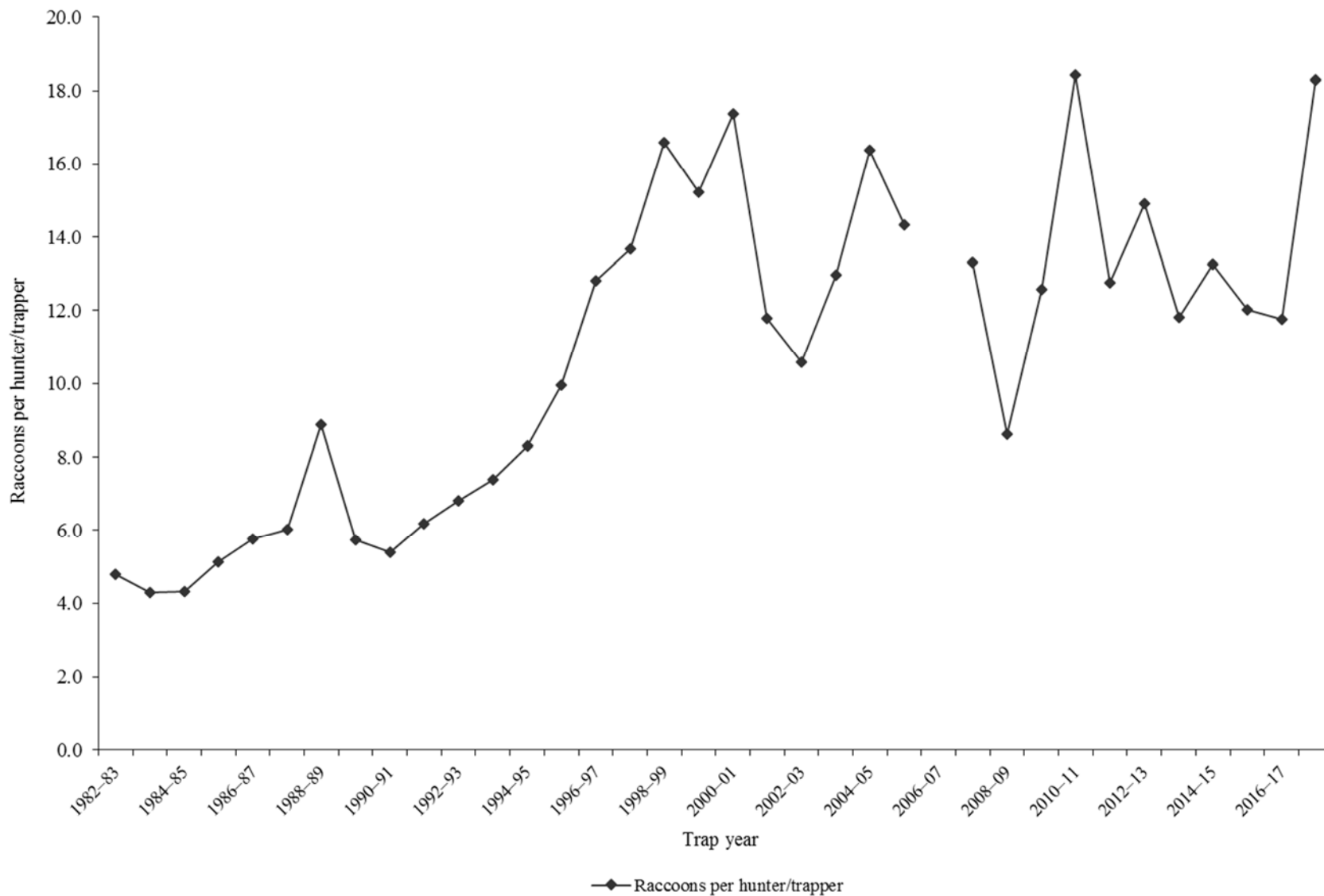
RACCOON

Statewide raccoon harvest statistics*, Utah 1982–2018.

Trap year	Trappers afield	Incidental harvest	Trap harvest	Hunt harvest	Set-days / raccoon	Raccoons / 1000 set-days	Raccoons / trapper	Pelt price (\$)
1982–83	178	—	853	—	19	51.3	4.8	12.34
1983–84	192	—	822	—	40	25.0	4.3	13.51
1984–85	329	—	1417	—	47	21.2	4.3	12.85
1985–86	290	—	1485	—	49	20.5	5.1	9.26
1986–87	418	—	2412	—	39	25.5	5.8	12.62
1987–88	434	—	2619	—	41	24.3	6.0	9.41
1988–89	350	—	3104	—	14	71.9	8.9	7.71
1989–90	430	—	2464	—	17	58.8	5.7	5.78
1990–91	214	—	1156	—	18	54.3	5.4	4.65
1991–92	368	—	2273	—	20	50.3	6.2	4.72
1992–93	272	—	1851	—	17	59.5	6.8	2.57
1993–94	306	—	2259	—	19	53.4	7.4	6.98
1994–95	364	—	3025	—	23	43.8	8.3	6.06
1995–96	293	—	2914	—	10	100.1	9.9	8.07
1996–97	330	—	4228	—	13	77.2	12.8	13.35
1997–98	365	—	4989	—	29	34.5	13.7	9.98
1998–99	468	—	7765	—	22	45.5	16.6	4.95
1999–00	349	—	5317	—	34	29.8	15.2	5.67
2000–01	327	—	5678	—	29	34.8	17.4	5.16
2001–02	321	—	3785	—	32	31.2	11.8	8.04
2002–03	378	—	4001	—	26	38.4	10.6	5.62
2003–04	434	—	5634	—	37	26.8	13.0	10.63
2004–05	391	—	6405	—	35	28.4	16.4	6.54
2005–06	230	—	1761	1537	246	4.1	14.3	9.83
2006–07	325	—	—	—	—	—	—	7.18
2007–08	300	—	2414	1576	50	19.8	13.3	10.85
2008–09	275	—	1639	729	58	17.4	8.6	6.21
2009–10	349	633	3439	946	39	25.9	12.6	7.09
2010–11	292	571	3958	1417	28	36.0	18.4	8.17
2011–12	289	453	3168	520	34	29.6	12.8	7.77
2012–13	377	614	4048	1577	35	28.4	14.9	14.08
2013–14	374	1066	4031	385	48	21.0	11.8	9.50
2014–15	354	743	4046	648	49	20.4	13.3	5.46
2015–16	343	627	3631	490	44	22.7	12.0	4.10
2016–17	264	523	2734	371	55	18.2	11.8	4.92
2017–18	258	601	3539	1181	29	34.8	18.3	3.92
Average	329	648	3282	948	38	36.7	10.8	7.93

*Trappers and raccoons per trapper include hunters and their harvest. Set-days per raccoon and raccoons per 1000 set-days are based only on trapping activity, and do not include hunt harvest or hunter-days afield.

Statewide raccoon harvest trends, Utah 1982–2018.



Raccoon trapping harvest statistics by county and ecoregion, Utah 2017–18.

County	n	Trappers afield	Trap harvest	Traps set	Trapping days	Set-days	Set-days / raccoon	Raccoons / 1000 set-days	Raccoons / trapper
Beaver	0	0	—	—	—	—	—	—	—
Box Elder	13	31	673	382	1508	20408	30.3	33.0	21.7
Iron	0	0	—	—	—	—	—	—	—
Juab	2	5	10	53	57	974	102.0	9.8	2.0
Millard	3	7	10	12	112	208	21.8	46.0	1.3
Tooele	1	2	36	2	60	60	1.7	600.0	15.0
Great Basin totals	19	45	729	449	1737	21649	29.7	33.6	16.1
Cache	11	26	551	289	845	9680	17.6	57.0	21.0
Davis	4	10	93	53	138	1021	11.0	91.1	9.8
Morgan	3	7	160	98	239	3258	20.4	49.1	22.3
Piute	0	0	—	—	—	—	—	—	—
Rich	3	7	31	36	160	1019	32.8	30.4	4.3
Salt Lake	5	12	88	43	155	508	5.8	173.7	7.4
Sanpete	2	5	267	79	470	8305	31.1	32.2	56.0
Sevier	5	12	248	150	570	9298	37.5	26.7	20.8
Summit	1	2	0	72	143	4296	—	0.0	0.0
Utah	10	24	551	325	873	16312	29.6	33.8	23.1
Wasatch	4	10	138	74	542	5413	39.1	25.6	14.5
Weber	8	19	406	134	702	6076	15.0	66.8	21.3
Rocky Mountain totals	56	134	2533	1351	4837	65187	25.7	38.9	19.0
Daggett	0	0	—	—	—	—	—	—	—
Duchesne	5	12	64	38	714	2002	31.1	32.2	5.4
Uintah	6	14	93	93	487	3114	33.5	29.9	6.5
Uintah Basin totals	11	26	157	131	1200	5117	32.5	30.8	6.0
Carbon	1	2	21	5	143	286	13.3	75.0	9.0
Emery	1	2	55	24	871	8711	158.7	6.3	23.0
Garfield	1	2	0	43	2	43	—	0.0	0.0
Grand	1	2	29	7	17	50	1.8	571.4	12.0
Kane	1	2	0	5	33	67	—	0.0	0.0
San Juan	1	2	5	14	24	143	30.0	33.3	2.0
Washington	2	5	10	12	255	305	32.0	31.3	2.0
Wayne	0	0	—	—	—	—	—	—	—
Colorado Plateau totals	8	19	120	110	1346	9606	80.5	12.4	6.3
Unknown	0	0	—	—	—	—	—	—	—
Statewide totals*	84	200	3539	2041	9121	101559	28.7	34.8	17.7

*Statewide totals for sample size and trappers afield are not totals of the columns because trappers trapped multiple counties.

Raccoon hunting harvest statistics by county and ecoregion, Utah 2017–18.

County	n	Hunters afield	Hunt harvest	Hunter-days afield	Hunter-days / fox	Foxes / hunter
Beaver	1	2	2	2	1.0	1.0
Box Elder	1	2	53	36	0.7	22.0
Iron	0	0	—	—	—	—
Juab	3	7	33	7	0.2	4.7
Millard	1	2	0	215	—	0.0
Tooele	1	2	5	24	5.0	2.0
Great Basin totals	7	17	93	284	3.1	5.6
Cache	0	0	—	—	—	—
Davis	0	0	—	—	—	—
Morgan	0	0	—	—	—	—
Piute	1	2	143	24	0.2	60.0
Rich	0	0	—	—	—	—
Salt Lake	2	5	5	26	5.5	1.0
Sanpete	2	5	72	10	0.1	15.0
Sevier	3	7	611	98	0.2	85.3
Summit	1	2	0	5	—	0.0
Utah	7	17	189	265	1.4	11.3
Wasatch	0	0	—	—	—	—
Weber	1	2	21	72	3.3	9.0
Rocky Mountain totals	17	41	1041	499	0.5	25.6
Daggett	1	2	0	0	—	0.0
Duchesne	5	12	48	41	0.9	4.0
Uintah	0	0	—	—	—	—
Uintah Basin totals	6	14	48	41	0.9	3.3
Carbon	0	0	—	—	—	—
Emery	0	0	—	—	—	—
Garfield	0	0	—	—	—	—
Grand	0	0	—	—	—	—
Kane	0	0	—	—	—	—
San Juan	0	0	—	—	—	—
Washington	1	2	0	0	—	0.0
Wayne	0	0	—	—	—	—
Colorado Plateau totals	1	2	0	0	—	0.0
Unknown	0	0	—	—	—	—
Statewide totals*	29	69	1181	823	0.7	17.1

*Statewide totals for sample size and hunters afield are not totals of the columns because hunters hunted multiple counties.

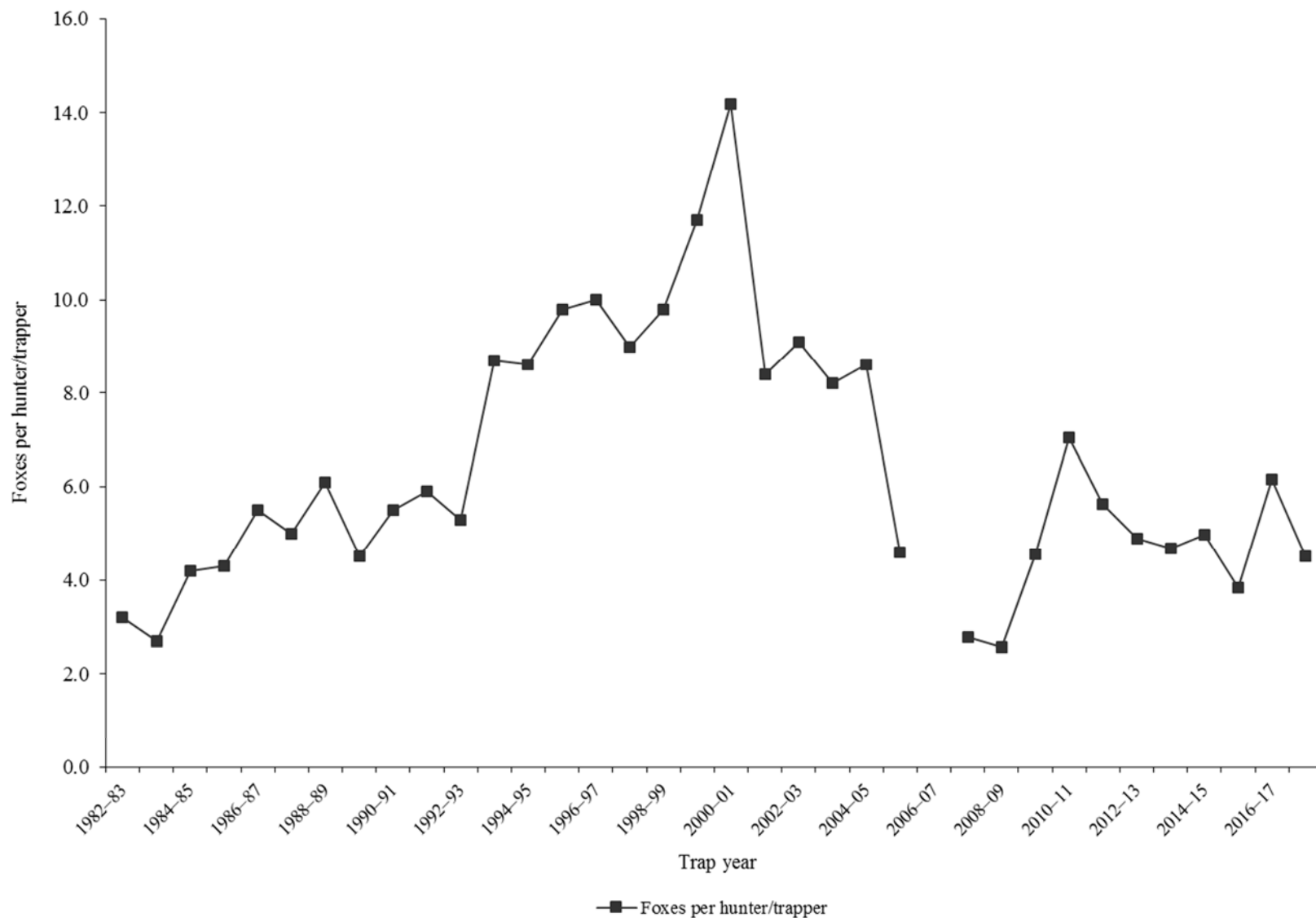
RED FOX

Statewide red fox harvest statistics*, Utah 1982–2018.

Trap year	Trappers afield	Incidental harvest	Trap harvest	Hunt harvest	Set-days / fox	Foxes / 1000 set-days	Foxes / trapper	Pelt price (\$)
1982–83	172	—	544	—	128	7.8	3.2	30.13
1983–84	191	—	523	—	134	7.5	2.7	28.43
1984–85	298	—	1244	—	116	8.7	4.2	25.90
1985–86	316	—	1351	—	74	13.6	4.3	15.83
1986–87	444	—	2446	—	59	17.1	5.5	20.14
1987–88	506	—	2545	—	50	20.2	5.0	13.66
1988–89	398	—	2446	—	34	29.2	6.1	6.57
1989–90	496	—	2250	—	40	25.3	4.5	7.80
1990–91	365	—	1993	—	25	40.0	5.5	6.34
1991–92	623	—	3663	—	28	35.4	5.9	10.70
1992–93	594	—	3126	—	27	37.5	5.3	10.12
1993–94	578	—	5055	—	26	38.9	8.7	14.74
1994–95	509	—	4378	—	36	28.0	8.6	15.34
1995–96	421	—	4115	—	26	38.7	9.8	18.08
1996–97	427	—	4274	—	27	36.8	10.0	17.48
1997–98	414	—	3744	—	32	31.5	9.0	11.31
1998–99	570	—	5600	—	34	29.5	9.8	8.95
1999–00	420	—	4900	—	44	22.7	11.7	14.19
2000–01	375	—	5330	—	52	19.1	14.2	16.92
2001–02	379	—	3192	—	59	16.9	8.4	24.48
2002–03	482	—	4399	—	76	13.1	9.1	28.19
2003–04	568	—	4639	—	71	14.1	8.2	18.07
2004–05	545	—	4674	—	102	9.8	8.6	18.86
2005–06	406	—	1874	—	196	5.1	4.6	24.35
2006–07	496	—	—	—	—	—	—	20.49
2007–08	407	—	1130	—	174	5.7	2.8	21.42
2008–09	339	—	872	—	261	3.8	2.6	17.98
2009–10	461	557	1908	192	102	9.8	4.6	16.32
2010–11	376	216	2435	213	84	12.0	7.0	22.62
2011–12	335	388	1757	128	84	11.9	5.6	42.47
2012–13	380	195	1690	171	83	12.1	4.9	43.50
2013–14	428	519	1934	64	154	6.5	4.7	40.39
2014–15	361	478	1714	79	161	6.2	5.0	24.30
2015–16	361	494	1183	203	180	5.6	3.8	15.37
2016–17	207	351	1175	99	249	4.0	6.2	16.16
2017–18	251	372	1048	84	122	8.2	4.5	14.63
Average	414	397	2719	137	90	18.1	6.4	19.51

*Trappers and foxes per trapper include hunters and their harvest. Set-days per fox and foxes per 1000 set-days are based only on trapping activity, and do not include hunt harvest or hunter-days afield.

Statewide red fox harvest trends, Utah 1982–2018.



Red fox trapping harvest statistics by county and ecoregion, Utah 2017–18.

County	n	Trappers afield	Trap harvest	Traps set	Trapping days	Set-days	Set-days / fox	Foxes / 1000 set-days	Foxes / trapper
Beaver	3	7	12	29	103	470	39.4	25.4	1.7
Box Elder	7	17	112	243	857	11950	106.5	9.4	6.7
Iron	3	7	14	100	239	3341	233.3	4.3	2.0
Juab	3	7	76	110	251	3866	50.6	19.8	10.7
Millard	3	7	36	50	246	3141	87.7	11.4	5.0
Tooele	0	0	—	—	—	—	—	—	—
Great Basin totals	19	45	250	532	1694	22768	90.9	11.0	5.5
Cache	5	12	24	107	618	4188	175.5	5.7	2.0
Davis	3	7	38	86	117	1850	48.4	20.6	5.3
Morgan	0	0	—	—	—	—	—	—	—
Piute	0	0	—	—	—	—	—	—	—
Rich	1	2	0	10	17	67	—	0.0	0.0
Salt Lake	1	2	0	19	24	191	—	0.0	0.0
Sanpete	2	5	26	95	470	9809	373.6	2.7	5.5
Sevier	7	17	210	310	1055	22910	109.1	9.2	12.6
Summit	1	2	0	12	24	119	—	0.0	0.0
Utah	12	29	105	220	842	7451	71.0	14.1	3.7
Wasatch	1	2	0	21	19	172	—	0.0	0.0
Weber	2	5	24	74	131	1921	80.5	12.4	5.0
Rocky Mountain totals	35	84	427	955	3318	48677	113.9	8.8	5.1
Daggett	2	5	17	84	179	3401	203.6	4.9	3.5
Duchesne	7	17	160	348	554	12919	80.8	12.4	9.6
Uintah	12	29	60	131	1062	4902	82.2	12.2	2.1
Uintah Basin totals	21	50	237	563	1795	21221	89.8	11.1	4.7
Carbon	3	7	7	26	258	1384	193.3	5.2	1.0
Emery	3	7	55	72	406	4009	73.0	13.7	7.7
Garfield	1	2	14	60	167	4177	291.7	3.4	6.0
Grand	0	0	—	—	—	—	—	—	—
Kane	0	0	—	—	—	—	—	—	—
San Juan	6	14	26	160	692	8556	325.9	3.1	1.8
Washington	0	0	—	—	—	—	—	—	—
Wayne	1	2	24	217	143	13031	546.0	1.8	10.0
Colorado Plateau totals	14	33	126	535	1666	31157	246.3	4.1	3.8
Unknown	3	7	7	76	167	3709	518.0	1.9	1.0
Statewide totals*	85	203	1048	2661	8640	127532	121.7	8.2	5.2

*Statewide totals for sample size and trappers afield are not totals of the columns because trappers trapped multiple counties.

Red fox hunting harvest statistics by county and ecoregion, Utah 2017–18.

County	n	Hunters afield	Hunt harvest	Hunter-days afield	Hunter-days / fox	Foxes / hunter
Beaver	0	0	—	—	—	—
Box Elder	1	2	17	60	3.6	7.0
Iron	0	0	—	—	—	—
Juab	3	7	0	7	—	0.0
Millard	2	5	2	239	100.0	0.5
Tooele	2	5	0	10	—	0.0
Great Basin totals	8	19	19	315	16.5	1.0
Cache	3	7	19	134	7.0	2.7
Davis	2	5	17	131	7.9	3.5
Morgan	0	0	—	—	—	—
Piute	0	0	—	—	—	—
Rich	1	2	5	14	3.0	2.0
Salt Lake	0	0	—	—	—	—
Sanpete	0	0	—	—	—	—
Sevier	0	0	—	—	—	—
Summit	0	0	—	—	—	—
Utah	3	7	2	10	4.0	0.3
Wasatch	1	2	0	5	—	0.0
Weber	1	2	17	60	3.6	7.0
Rocky Mountain totals	11	26	60	353	5.9	2.3
Daggett	0	0	—	—	—	—
Duchesne	1	2	0	0	—	0.0
Uintah	1	2	0	2	—	0.0
Uintah Basin totals	2	5	0	2	—	0.0
Carbon	1	2	2	24	10.0	1.0
Emery	0	0	—	—	—	—
Garfield	0	0	—	—	—	—
Grand	2	5	0	12	—	0.0
Kane	0	0	—	—	—	—
San Juan	0	0	—	—	—	—
Washington	0	0	—	—	—	—
Wayne	0	0	—	—	—	—
Colorado Plateau totals	3	7	2	36	15.0	0.3
Unknown	2	5	2	14	6.0	0.5
Statewide totals*	22	53	84	721	8.6	1.6

*Statewide totals for sample size and hunters afield are not totals of the columns because hunters hunted multiple counties.

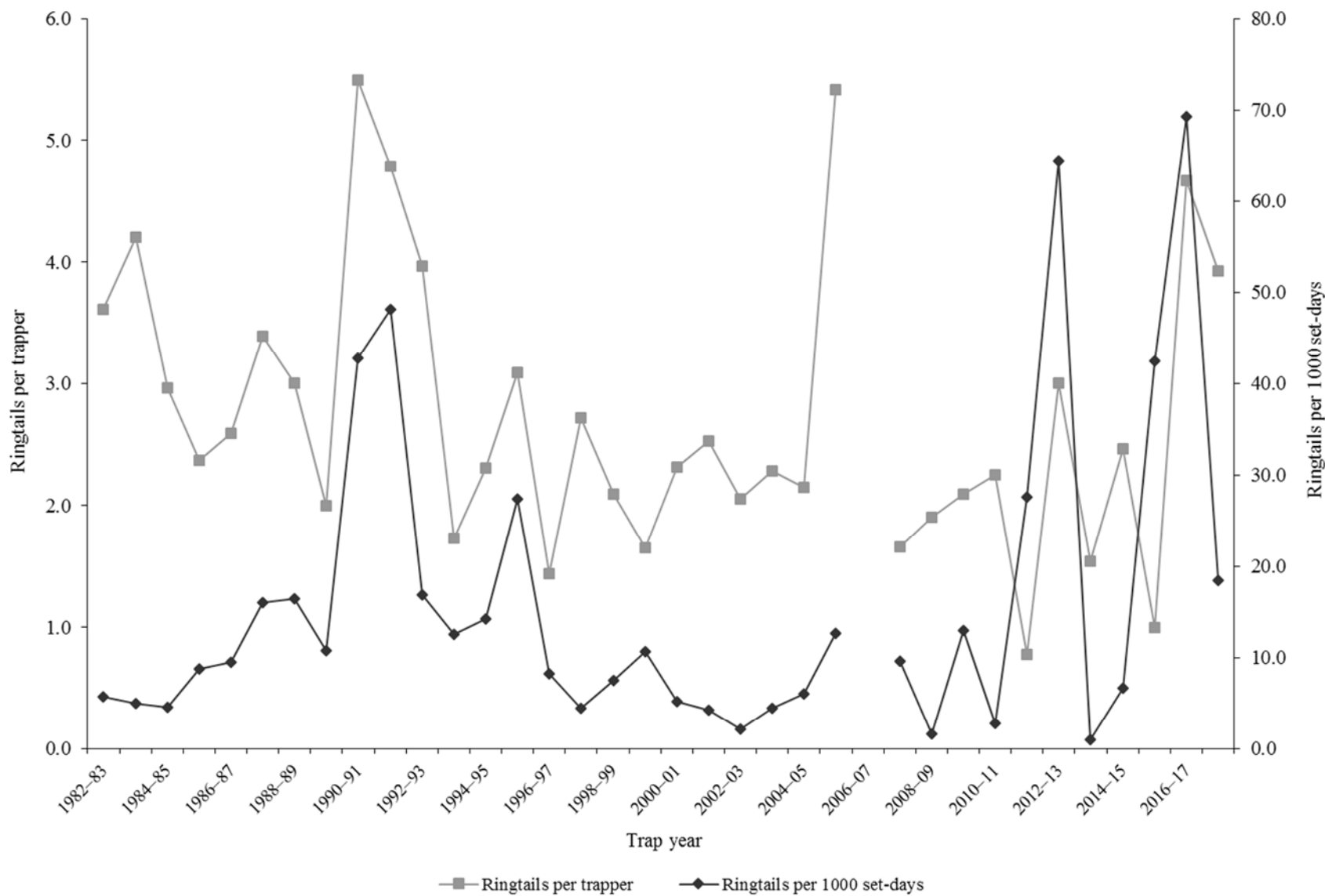
RINGTAIL

Statewide ringtail harvest statistics*, Utah 1982–2018.

Trap year	Trappers afield	Incidental harvest	Trap harvest	Hunt harvest	Set-days / ringtail	Ringtails / 1000 set-days	Ringtails / trapper	Pelt price (\$)
1982–83	90	—	325	—	176	5.7	3.6	4.40
1983–84	90	—	378	—	203	4.9	4.2	3.96
1984–85	85	—	252	—	218	4.6	3.0	3.15
1985–86	68	—	161	—	114	8.8	2.4	2.69
1986–87	79	—	205	—	105	9.6	2.6	3.64
1987–88	79	—	268	—	62	16.0	3.4	2.40
1988–89	62	—	186	—	61	16.4	3.0	5.70
1989–90	66	—	132	—	93	10.7	2.0	2.65
1990–91	18	—	99	—	23	42.8	5.5	3.50
1991–92	46	—	220	—	21	48.1	4.8	3.22
1992–93	27	—	107	—	59	16.9	4.0	3.97
1993–94	37	—	64	—	80	12.6	1.7	4.04
1994–95	69	—	159	—	70	14.3	2.3	6.41
1995–96	44	—	136	—	37	27.4	3.1	6.96
1996–97	32	—	46	—	122	8.2	1.4	11.68
1997–98	21	—	57	—	227	4.4	2.7	2.99
1998–99	66	—	138	—	134	7.5	2.1	4.17
1999–00	61	—	101	—	93	10.7	1.7	7.03
2000–01	51	—	118	—	194	5.2	2.3	6.00
2001–02	40	—	101	—	236	4.2	2.5	10.29
2002–03	56	—	115	—	474	2.1	2.1	5.20
2003–04	42	—	96	—	223	4.5	2.3	6.83
2004–05	59	—	127	—	165	6.1	2.2	11.12
2005–06	19	—	103	—	79	12.7	5.4	9.31
2006–07	98	—	—	—	—	—	—	12.37
2007–08	65	—	108	—	104	9.6	1.7	14.86
2008–09	31	—	59	—	621	1.6	1.9	10.70
2009–10	22	63	46	—	77	13.0	2.1	15.00
2010–11	16	26	36	—	356	2.8	2.3	18.91
2011–12	18	14	14	—	36	27.6	0.8	12.21
2012–13	7	41	21	0	16	64.5	3.0	15.66
2013–14	24	64	37	0	991	1.0	1.5	17.91
2014–15	13	32	32	0	150	6.7	2.5	17.27
2015–16	18	52	18	0	24	42.4	1.0	12.56
2016–17	18	18	84	0	14	69.3	4.7	23.47
2017–18	28	47	110	2	55	18.4	3.9	20.81
Average	46	40	122	0	163	16.0	2.7	8.97

*Trappers and ringtails per trapper include hunters and their harvest. Set-days per ringtail and ringtails per 1000 set-days are based only on trapping activity, and do not include hunt harvest or hunter-days afield.

Statewide ringtail harvest trends, Utah 1982–2018.



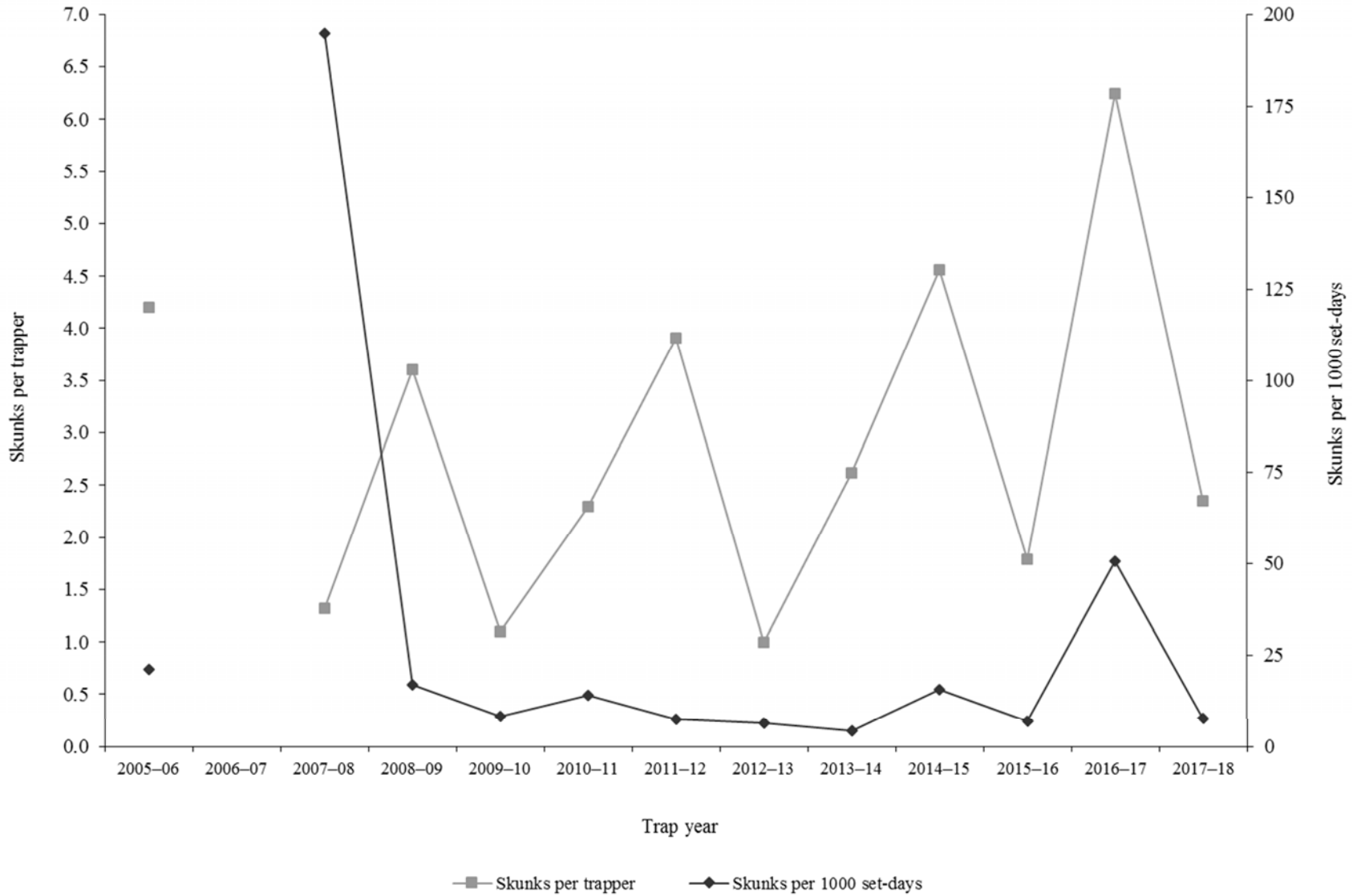
SPOTTED SKUNK

Statewide spotted skunk harvest statistics*, Utah 2005–2018.

Trap year	Trappers afield	Incidental harvest	Trap harvest	Hunt harvest	Set-days / skunk	Skunks / 1000 set-days	Skunks / trapper	Pelt price (\$)
2005–06	34	—	144	—	47	21.2	4.2	5.37
2006–07	106	—	—	—	—	—	—	12.42
2007–08	34	—	45	—	5	194.8	1.3	12.07
2008–09	67	—	238	—	60	16.8	3.6	8.00
2009–10	19	95	21	—	124	8.1	1.1	15.00
2010–11	33	200	76	—	71	14.0	2.3	15.00
2011–12	11	221	14	29	135	7.4	3.9	8.25
2012–13	17	137	17	0	156	6.4	1.0	14.48
2013–14	13	206	17	17	230	4.3	2.6	13.51
2014–15	25	285	114	0	65	15.5	4.6	9.80
2015–16	33	321	55	4	145	6.9	1.8	6.09
2016–17	8	63	50	0	20	50.5	6.3	5.51
2017–18	23	155	47	7	130	7.7	2.3	8.65
Average	33	187	70	8	99	29.5	2.9	10.32

*Trappers and skunks per trapper include hunters and their harvest. Set-days per skunk and skunks per 1000 set-days are based only on trapping activity, and do not include hunt harvest or hunter-days afield.

Statewide spotted skunk* harvest trends, Utah 2005–2018.



*Prior to 2005–06, spotted skunk harvest and trapping activity were combined with striped skunk.

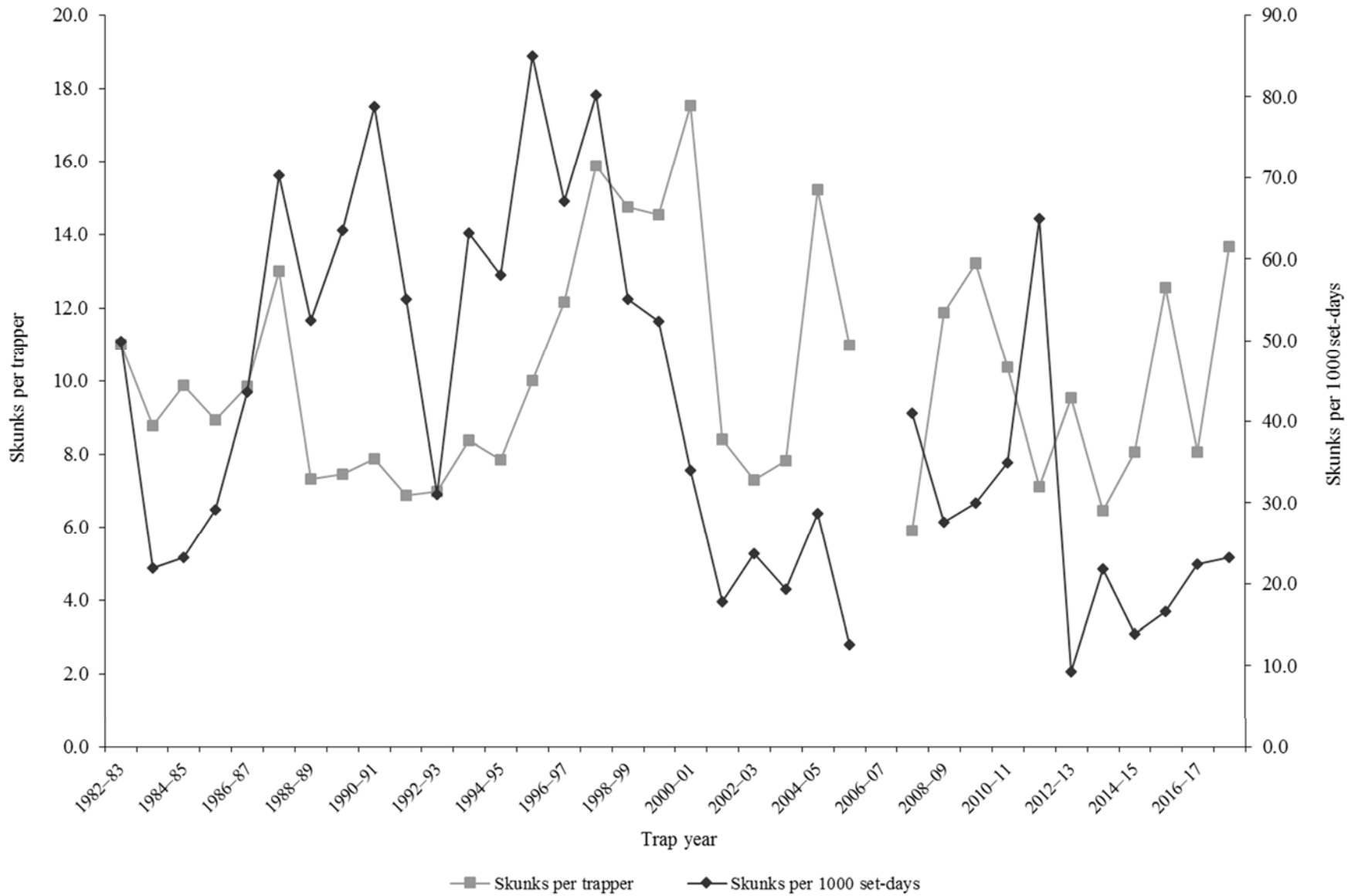
STRIPED SKUNK

Statewide striped skunk harvest statistics*, Utah 1982–2018.

Trap year	Trappers afield	Incidental harvest	Trap harvest	Hunt harvest	Set-days / skunk	Skunks / 1000 set-days	Skunks / trapper	Pelt price (\$)
1982–83	140	—	1540	—	20	49.9	11.0	3.00
1983–84	144	—	1262	—	45	22.0	8.8	2.85
1984–85	111	—	1097	—	43	23.3	9.9	2.17
1985–86	195	—	1741	—	34	29.1	8.9	—
1986–87	188	—	1851	—	23	43.6	9.8	—
1987–88	185	—	2404	—	14	70.2	13.0	1.05
1988–89	132	—	966	—	19	52.5	7.3	0.30
1989–90	173	—	1289	—	16	63.6	7.5	0.30
1990–91	82	—	645	—	13	78.8	7.9	0.30
1991–92	151	—	1037	—	18	55.2	6.9	4.00
1992–93	132	—	922	—	32	31.1	7.0	5.30
1993–94	175	—	1465	—	16	63.2	8.4	7.35
1994–95	183	—	1438	—	17	58.1	7.9	9.29
1995–96	175	—	1753	—	12	84.9	10.0	6.63
1996–97	142	—	1726	—	15	67.1	12.2	6.00
1997–98	182	—	2890	—	12	80.2	15.9	4.11
1998–99	219	—	3227	—	18	55.1	14.7	5.67
1999–00	188	—	2730	—	19	52.3	14.5	8.50
2000–01	220	—	3857	—	29	34.0	17.5	8.69
2001–02	214	—	1798	—	56	17.8	8.4	6.79
2002–03	237	—	1732	—	42	23.7	7.3	4.24
2003–04	295	—	2305	—	52	19.3	7.8	10.00
2004–05	280	—	4264	—	35	28.7	15.2	4.64
2005–06	95	—	1043	—	79	12.6	11.0	5.37
2006–07	138	—	—	—	—	—	—	6.07
2007–08	144	—	848	—	24	41.0	5.9	4.52
2008–09	143	—	1697	—	36	27.6	11.9	3.15
2009–10	124	1632	1638	—	33	30.0	13.2	6.47
2010–11	154	1136	1597	—	29	35.0	10.4	5.29
2011–12	107	916	602	160	15	65.0	7.1	4.55
2012–13	137	1159	1241	65	108	9.3	9.5	5.01
2013–14	108	1272	654	44	46	21.8	6.5	6.96
2014–15	82	1230	645	16	72	13.9	8.1	4.94
2015–16	111	818	1187	206	60	16.6	12.5	4.40
2016–17	65	727	521	3	45	22.4	8.1	5.95
2017–18	115	919	1198	373	43	23.2	13.7	6.16
Average	157	1090	1623	124	34	40.6	10.2	5.00

*Trappers and skunks per trapper include hunters and their harvest. Set-days per skunk and skunks per 1000 set-days are based only on trapping activity, and do not include hunt harvest or hunter-days afield.

Statewide striped skunk* harvest trends, Utah 1982–2018.



*Prior to 2005–06, harvest and trapping activity included both striped skunk and spotted skunk.

Striped skunk trapping harvest statistics by county and ecoregion, Utah 2017–18.

County	n	Trappers afield	Trap harvest	Traps set	Trapping days	Set-days	Set-days / skunk	Skunks / 1000 set-days	Skunks / trapper
Beaver	0	0	—	—	—	—	—	—	—
Box Elder	3	7	75	61	143	1231	16.4	61.0	10.7
Iron	0	0	—	—	—	—	—	—	—
Juab	0	0	—	—	—	—	—	—	—
Millard	1	2	5	5	7	14	3.0	333.3	2.0
Tooele	0	0	—	—	—	—	—	—	—
Great Basin totals	4	9	80	66	150	1245	15.6	64.0	8.5
Cache	4	9	122	91	169	2347	19.3	51.9	13.0
Davis	2	5	30	75	103	2176	71.4	14.0	6.5
Morgan	1	2	12	2	33	33	2.8	357.1	5.0
Piute	0	0	—	—	—	—	—	—	—
Rich	3	7	70	47	293	2017	28.7	34.9	10.0
Salt Lake	2	5	12	12	56	145	12.4	80.6	2.5
Sanpete	1	2	0	7	2	7	—	0.0	0.0
Sevier	3	7	263	82	1020	6859	26.1	38.3	37.3
Summit	0	0	—	—	—	—	—	—	—
Utah	5	12	171	101	469	10901	63.7	15.7	14.6
Wasatch	3	7	30	80	251	5255	172.4	5.8	4.3
Weber	4	9	197	59	347	3395	17.2	58.0	21.0
Rocky Mountain totals	28	66	907	556	2744	33136	36.5	27.4	13.8
Daggett	1	2	5	5	47	94	20.0	50.0	2.0
Duchesne	2	5	2	21	211	1055	450.0	2.2	0.5
Uintah	4	9	82	77	314	3255	39.7	25.2	8.8
Uintah Basin totals	7	16	89	103	572	4404	49.4	20.2	5.4
Carbon	1	2	2	2	33	33	14.0	71.4	1.0
Emery	1	2	0	14	856	5135	—	0.0	0.0
Garfield	0	0	—	—	—	—	—	—	—
Grand	0	0	—	—	—	—	—	—	—
Kane	0	0	—	—	—	—	—	—	—
San Juan	2	5	117	70	387	5487	46.8	21.4	25.0
Washington	1	2	2	21	234	2110	900.0	1.1	1.0
Wayne	0	0	—	—	—	—	—	—	—
Colorado Plateau totals	5	12	121	108	1510	12766	104.7	9.6	10.4
Unknown	0	0	—	—	—	—	—	—	—
Statewide totals*	40	94	1198	832	4976	51550	43.0	23.2	12.8

*Statewide totals for sample size and trappers afield are not totals of the columns because trappers trapped multiple counties.

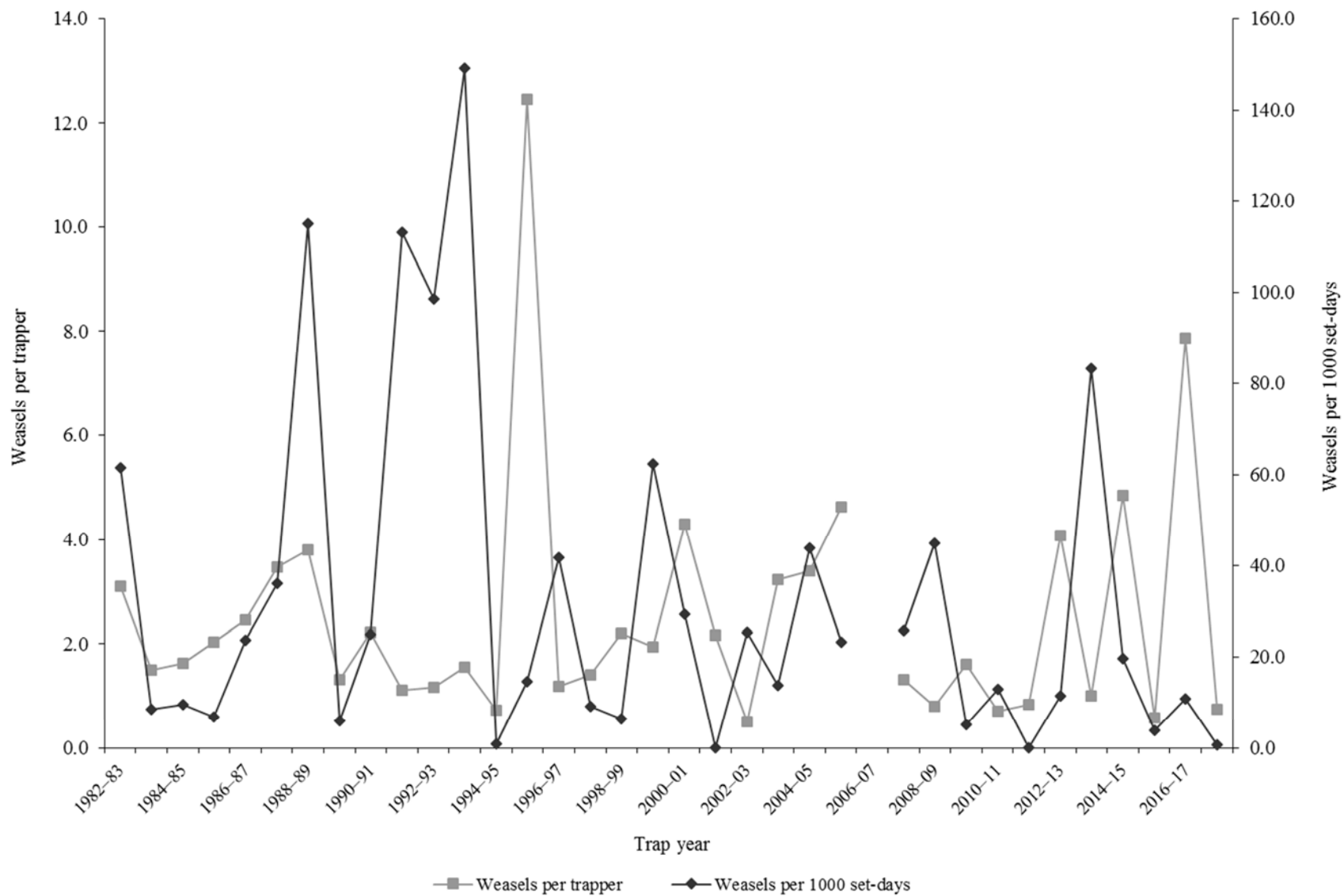
WEASEL

Statewide weasel harvest statistics*, Utah 1982–2018.

Trap year	Trappers afield	Incidental harvest	Trap harvest	Hunt harvest	Set-days / weasel	Weasels / 1000 set-days	Weasels / trapper	Pelt price (\$)
1982–83	19	—	59	—	16	61.5	3.1	1.00
1983–84	22	—	33	—	117	8.5	1.5	0.00
1984–85	46	—	75	—	106	9.4	1.6	0.75
1985–86	33	—	67	—	149	6.7	2.0	0.00
1986–87	50	—	123	—	42	23.6	2.5	1.50
1987–88	61	—	212	—	28	36.1	3.5	1.18
1988–89	24	—	91	—	9	115.0	3.8	0.25
1989–90	25	—	33	—	166	6.0	1.3	0.25
1990–91	14	—	31	—	40	24.8	2.2	0.30
1991–92	17	—	19	—	9	113.1	1.1	0.30
1992–93	24	—	28	—	10	98.6	1.2	0.30
1993–94	20	—	31	—	7	149.0	1.6	5.11
1994–95	18	—	13	—	1189	0.8	0.7	1.57
1995–96	24	—	299	—	69	14.6	12.5	3.08
1996–97	11	—	13	—	24	41.7	1.2	7.40
1997–98	20	—	28	—	111	9.0	1.4	3.03
1998–99	15	—	33	—	157	6.4	2.2	5.50
1999–00	34	—	66	—	16	62.4	1.9	—
2000–01	36	—	155	—	34	29.3	4.3	8.50
2001–02	6	—	13	—	0	—	2.2	—
2002–03	6	—	3	—	39	25.4	0.5	4.76
2003–04	18	—	58	—	73	13.8	3.2	—
2004–05	25	—	85	—	23	43.9	3.4	2.90
2005–06	41	—	190	—	43	23.3	4.6	—
2006–07	49	—	—	—	—	—	—	6.26
2007–08	11	—	15	—	39	25.6	1.3	2.99
2008–09	14	—	11	—	22	44.9	0.8	—
2009–10	29	13	47	—	196	5.1	1.6	7.64
2010–11	23	20	17	—	78	12.8	0.7	7.21
2011–12	25	4	0	21	—	0.0	0.8	4.58
2012–13	27	21	110	0	87	11.5	4.1	—
2013–14	3	10	3	0	12	83.3	1.0	5.00
2014–15	13	13	63	0	51	19.7	4.8	3.89
2015–16	26	15	11	4	258	3.9	0.6	3.06
2016–17	29	8	228	0	93	10.7	7.9	3.55
2017–18	19	7	12	2	1795	0.6	0.7	1.00
Average	24	12	65	4	150	33.6	2.5	3.10

*Trappers and weasels per trapper include hunters and their harvest. Set-days per weasel and weasels per 1000 set-days are based only on trapping activity, and do not include hunt harvest or hunter-days afield.

Statewide weasel harvest trends, Utah 1982–2018.



APPENDIX: UTAH FURBEARER MANAGEMENT ECOREGIONS

