

UTAH FURBEARER ANNUAL REPORT 2021-2022



Publication No. 22-17



UTAH FURBEARER ANNUAL REPORT 2021–2022

Prepared by:

Heather H. Bernales
Biometrician

and

Darren DeBlois
Mammals Program Coordinator

Publication No. 22-17

Annual Performance Report for Federal Aid Project W-65-M, segment 70

State of Utah
Department of Natural Resources
DIVISION OF WILDLIFE RESOURCES

J. Shirley
Division Director

TABLE OF CONTENTS

Definitions.....	1
Introduction.....	2
Methods.....	2
Results.....	3
Harvest by species.....	8
Badger.....	9
Beaver.....	13
Bobcat.....	16
Coyote.....	26
Gray fox.....	30
Kit fox.....	33
Marten.....	35
Mink.....	38
Muskrat.....	40
Raccoon.....	43
Red fox.....	46
Ringtail.....	50
Spotted skunk.....	52
Striped skunk.....	54
Weasel.....	57
Appendix: Utah furbearer management ecoregions.....	59

DEFINITIONS

Incidental harvest: Furbearers harvested in traps intended for a different furbearer species.

Trap year: Time frame corresponding to the 2021–22 furbearer seasons, as outlined in the 2021–22 Utah Furbearer Guidebook.

Trappers afield: Number of furbearer license holders who trapped furbearers during a particular trap year. License holders who took furbearers by means other than trapping, including shooting or with the aid of dogs, are included in this figure except for bobcat.

Total harvest: Number of furbearers of a particular species taken by means of trapping and hunting by furbearer license holders. This figure does not include harvest of unprotected wildlife, such as coyote, muskrat, red fox, raccoon, or striped skunk, taken by persons who did not purchase a furbearer license, nor does it include harvest of furbearers taken for creating a nuisance or causing damage.

Total set-days: Number of traps set during the furbearer season for the trapping of a particular species, multiplied by the number of days these traps were in the field. This figure pertains only to trapping, and does not include days afield by furbearer hunters or pursuers.

Pelt price: Average price paid for pelts of a specific furbearer species harvested in Utah, obtained mainly from a summary of the prices bid at the Utah Trappers Association fur auction, as well as prices from a survey of registered furdealers buying pelts harvested in Utah.

Wildlife Services harvest (coyote only): Number of coyotes taken by USDA-APHIS Wildlife Services in a particular year. Prior to 2006–07, Wildlife Services yearly harvest summaries applied to their fiscal year, which begins October 1 and ends September 30, although most harvest takes place during spring. Beginning in 2006–07, Wildlife Services harvest is reported for the period July 1 to June 30 of the following year.

INTRODUCTION

The furbearer harvest report presents furbearer harvest and trapper/hunter effort trends across the state of Utah, based on data collected from furbearer trappers and hunters. This report represents the furbearer portion of the Annual Performance Report for Federal Aid Project W-65-M, segment 70, grant agreement period July 1, 2021 through June 30, 2022. This Federal Aid project covers the 2021–22 trapping seasons. Additionally this report presents statewide trends since the early 1980s and population trend indicators for bobcats as well as the estimated economic value of Utah’s furbearer harvest each year. Furbearer harvest and trapper/hunter effort may have been more driven by pelt price than by availability, so annual fur harvest should not be used as the sole means to assess/project population sizes.

Furbearers included badger, beaver, bobcat, gray fox, kit fox, mink, marten, ringtail, spotted skunk, and weasel. A furbearer license was required to harvest any of these species, and additional permits were required to harvest bobcats and martens. There were no bag limits for furbearers, except bobcats. Each bobcat permit allowed a person to harvest one bobcat, and a single person could obtain up to 6 bobcat permits in 2021–22. Sales of bobcat permits were no longer limited. Season dates for badger, gray fox, kit fox, marten, ringtail, spotted skunk, and weasel were September 18, 2021 through March 1, 2022. Bobcat season was November 18, 2021 through March 1, 2022. Season dates for beaver and mink were September 18, 2021 through April 1, 2022.

Coyote, muskrat, red fox, raccoon, and striped skunk were not under the jurisdiction of the Division, and/or were unprotected. Those species could be taken year round without a license; therefore, results presented in this report do not include harvest by persons who did not purchase a furbearer license. It was prohibited to take black-footed ferret, fisher, lynx, river otter, wolf, and wolverine.

METHODS

Furbearer harvest and effort information was obtained from a telephone/web mixed-mode survey of a statistically-valid random sample of furbearer license holders. The accuracy of that survey was dependent upon the following assumptions: (1) a random sample was achieved (i.e., there was no response bias by those who harvested successfully versus those who did not), (2) respondents recorded or remembered data accurately and did not guess or lie, and (3) respondents clearly understood the questions.

Trappers who harvested bobcats and martens were required to bring the animals’ pelts to a Division office or officer to have permanent tags attached and to surrender the lower jaws. Bobcat and marten harvest data presented in this report, such as county of kill and sex of harvest, were collected at that time; as such, that information was not projected. Additional information on bobcat harvest, such as harvest effort by method, trappers-afield, number of sets, and number of days was determined by the survey mentioned in the preceding paragraph. Due to the small number of marten trappers in Utah, we did not attempt to survey marten trappers. Instead, since a separate permit is required to trap marten, we assumed that all those who purchased a marten permit attempted to trap marten.

To determine age structure of the bobcat harvest, a canine tooth from each bobcat jaw was sectioned, and aged using cementum annuli by Matson's Lab in Manhattan, Montana. Survival rates were estimated using the Chapman-Robson estimator. Pelt prices were obtained mainly from a summary of the prices bid at the Utah Trappers Association fur auction, as well as from a survey of registered furdealers buying pelts harvested in Utah.

Because some furbearer species in Utah were rare or not highly sought after by trappers, it was not possible to achieve sufficient sample sizes for these species to make valid statistical inferences. Although the trends for statewide harvest and effort were still valid, at the county level, the harvest and effort estimates had low precision and were likely inaccurate. As such, results by county were only reported for species with a sample size ≥ 20 .

RESULTS

License Sales and General Survey Results

Furbearer licenses were valid for 365 days from the date of purchase. We used the 365-day period of April 1 to March 31 to determine the total number of furbearer licenses sold for the furbearer season. A total of 1,740 furbearer licenses were sold for the 2021–22 season. The percentage of license holders who bought a furbearer license but did not attempt to harvest furbearers was 41%. The number of trappers afield in 2021–22 was 1,029.

Furbearer Harvest, Historical Trends, and Economic Value

The majority of the harvest taken by furbearer license holders in 2021–22 was of non-protected species—coyote, muskrat, and raccoon. Total harvest of regulated furbearer species (i.e., species with designated trapping seasons) was 3,454 in 2021–22, only slightly higher than the 10-yr low of the previous year.

The Utah Trappers Association resumed its annual Fur Sale in 2022 and this report includes average pelt prices from their website at http://www.utahtrappers.org/docs/2022_Fur_Sale_Average.pdf, accessed July 1, 2022.

Furbearer license sales and survey responses, Utah 1982–2021.

Trap year	Furbearer licenses sold			License holders surveyed		Projection factor	% license holders not afield
	Resident	Nonresident	Total	Total	Percent (%)		
1982–83	—	—	1325	664	50.1	—	—
1983–84	—	—	1367	616	45.1	—	—
1984–85	—	—	1491	806	54.1	—	—
1985–86	—	—	1424	680	47.8	—	—
1986–87	—	—	1342	585	43.6	—	—
1987–88	—	—	1576	731	46.4	—	—
1988–89	—	—	1318	721	54.7	—	—
1989–90	—	—	1084	597	55.1	—	—
1990–91	—	—	949	513	54.1	—	30.0
1991–92	—	—	1210	689	56.9	—	2.2
1992–93	—	—	1426	857	60.1	—	16.0
1993–94	—	—	1315	—	—	—	—
1994–95	—	—	1287	585	45.5	—	7.0
1995–96	—	—	1240	683	55.1	—	21.2
1996–97	—	—	1131	606	53.6	—	25.4
1997–98	—	—	1190	498	41.8	—	19.5
1998–99	—	—	1191	395	33.2	—	19.8
1999–00	1172	39	1211	458	37.8	2.6	11.6
2000–01	1204	20	1224	420	34.3	2.9	12.4
2001–02	956	21	977	302	30.9	3.2	11.6
2002–03	1409	40	1449	514	35.5	2.8	16.3
2003–04	1729	47	1776	597	33.6	3.0	16.9
2004–05	1830	65	1895	615	32.5	3.1	18.2
2005–06	1631	57	1688	260	15.4	6.5	27.7
2006–07	2029	81	2110	262	12.4	8.1	26.7
2007–08	2085	55	2140	563	26.3	3.8	31.8
2008–09	2045	57	2102	750	35.7	2.8	34.8
2009–10	1902	34	1936	798	41.2	2.4	30.2
2010–11	1788	29	1817	555	30.5	3.3	30.1
2011–12	1856	36	1892	531	28.1	3.6	33.3
2012–13	2080	52	2132	622	29.2	3.4	34.4
2013–14	2389	60	2449	726	29.6	3.4	35.4
2014–15	2802	67	2869	907	31.6	3.2	41.1
2015–16	2580	52	2632	714	27.1	3.7	35.6
2016–17	2078	54	2132	815	38.2	2.6	31.2
2017–18	1972	54	2026	864	42.6	2.3	44.1
2018–19	1836	44	1880	866	46.1	2.2	51.0
2019–20	1422	48	1470	712	48.4	2.1	39.5
2020–21	2275	58	2333	716	30.7	3.3	40.1
2021–22	1706	34	1740	700	40.2	2.5	40.9
Average	1867	49	1641	626	39.9	2.8	26.5

Statewide total furbearer harvest* estimates by species, Utah 2012–2022.

Species	Trap year										Average 2012–22
	2012–13	2013–14	2014–15	2015–16	2016–17	2017–18	2018–19	2019–20	2020–21	2021–22	
Badger	302	371	417	648	486	297	369	227	306	298	372
Beaver	2276	2021	1388	1511	973	945	741	950	929	1402	1314
Bobcat	1365	1870	2919	1683	1856	2954	1652	1173	1011	965	1745
Coyote	5749	5784	6873	8001	5124	5259	3590	3484	6350	3774	5399
Gray fox	1288	1318	1015	1106	625	1067	669	429	756	495	877
Kit fox	373	14	145	99	154	44	13	103	62	22	103
Marten	26	16	22	9	2	15	11	8	4	0	11
Mink	867	1012	341	188	246	272	246	361	127	121	378
Muskrat	13650	8764	6092	6175	3163	7265	3491	4992	4962	5787	6434
Raccoon	6239	5482	5437	4748	3628	5321	2660	4007	4464	3417	4540
Red fox	2056	2517	2272	1880	1625	1503	981	1179	788	1302	1610
Ringtail	62	101	64	70	102	160	22	6	7	29	62
Spotted skunk	154	240	399	380	113	209	184	76	46	0	180
Striped skunk	2465	1970	1875	2211	1250	2490	1564	1251	1251	1728	1806
Weasel	131	13	76	30	236	21	167	14	10	122	82

*Total harvest includes incidental take.

Statewide furbearer trapping harvest statistics* by species, Utah 2021–2022.

Species	Trappers afield	Trap harvest	Set-days	Set-days / furbearer	Furbearers / 1000 set-days	Furbearers / trapper
Badger	22	40	7383	184.6	5.4	1.8
Beaver	132	1104	73428	66.5	15.0	8.4
Bobcat	498	815		0.0	2.5	1.6
Coyote	343	1949	408285	209.5	4.8	5.7
Gray fox	55	186	24241	130.3	7.7	3.4
Kit fox	12	7	5904	791.7	1.3	0.6
Marten	152	0	—	—	—	0.0
Mink	22	32	2255	69.8	14.3	1.5
Muskrat	82	5449	237547	43.6	22.9	66.5
Raccoon	204	2450	93608	38.2	26.2	12.0
Red fox	132	731	77795	106.4	9.4	5.5
Ringtail	5	12	410	33.0	30.3	2.4
Spotted skunk	0	0	—	—	—	—
Striped skunk	55	987	60564	61.4	16.3	17.9
Weasel	15	122	19406	159.3	6.3	8.1

*Does not include incidental harvest.

Statewide furbearer hunting harvest by species, Utah 2021–2022.

Species	Hunters afield	Hunt harvest	Hunting days	Days / furbearer	Furbearers / hunter
Badger	57	62	812	13.1	1.1
Beaver	5	5	57	11.5	1.0
Bobcat	208	150	2314	15.4	0.7
Coyote	236	1432	3957	2.8	6.1
Gray fox	2	12	12	1.0	5.0
Kit fox	5	7	—	—	1.5
Mink	2	0	2	—	0.0
Muskrat	2	5	25	5.0	2.0
Raccoon	47	373	703	1.9	7.9
Red fox	57	42	598	14.1	0.7
Ringtail	7	5	15	3.0	0.7
Spotted skunk	0	0	—	—	—
Striped skunk	0	0	—	—	—
Weasel	0	0	—	—	—

Number of furbearers harvested in traps set for other species (i.e. incidental take), Utah 2021–2022.

Species	Incidental harvest	Trap / hunt harvest	Total harvest	% incidental harvest
Badger	196	102	298	65.8
Beaver	293	1109	1402	20.9
Bobcat*	42	965	965	4.4
Coyote	393	3381	3774	10.4
Gray fox	296	199	495	59.8
Kit fox	7	15	22	31.8
Marten	0	0	0	—
Mink	89	32	121	73.6
Muskrat	333	5454	5787	5.8
Raccoon	594	2823	3417	17.4
Red fox	529	773	1302	40.6
Ringtail	12	17	29	41.4
Spotted skunk	0	0	0	—
Striped skunk	741	987	1728	42.9
Weasel	0	122	122	0.0
Total	3525	15979	19462	18.1

*Incidental bobcat harvest are accounted for in trap harvest.

HARVEST BY SPECIES

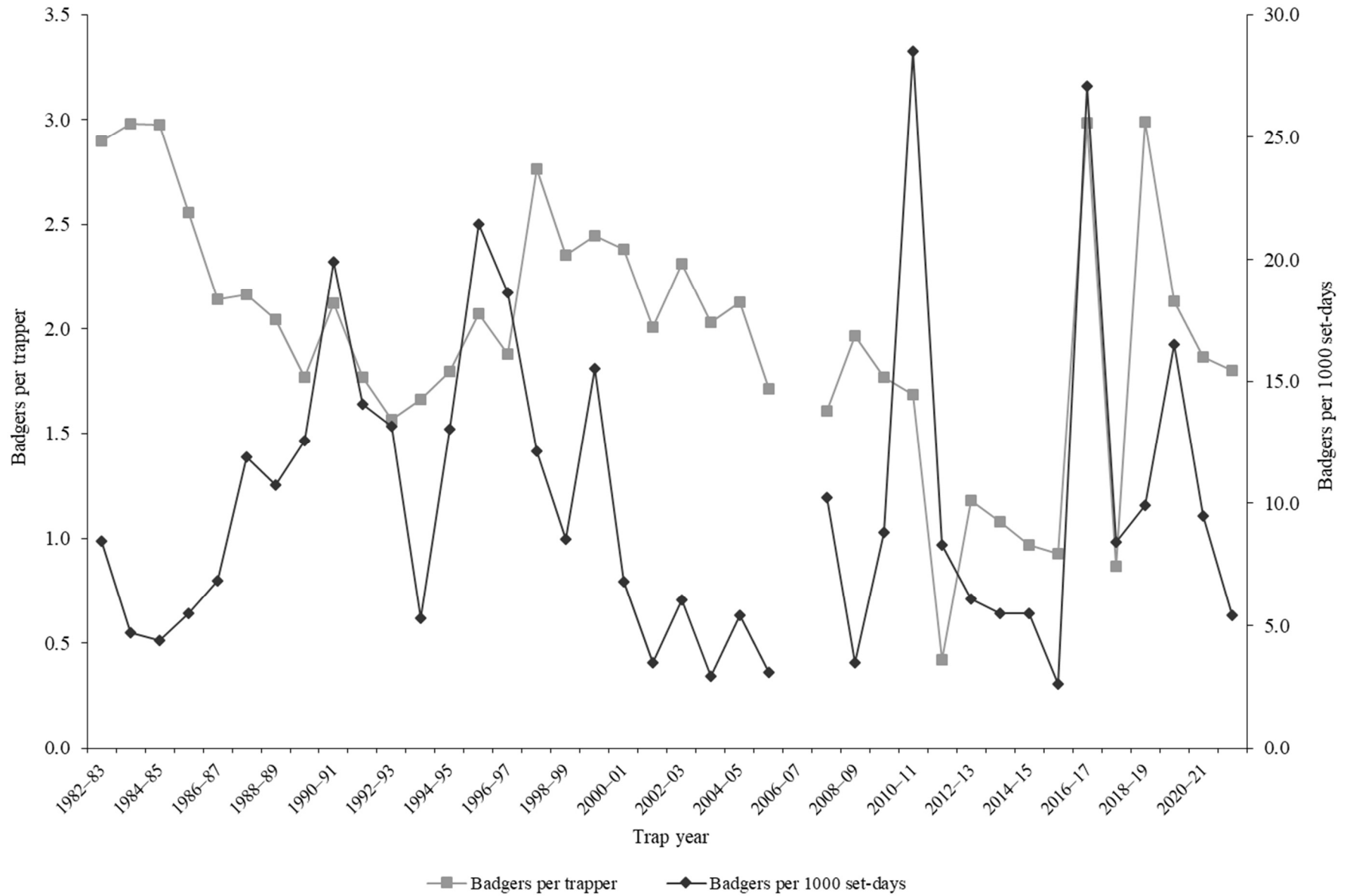
BADGER

Statewide badger harvest statistics*, Utah 1982–2022.

Trap year	Trappers afield	Incidental harvest	Trap harvest	Hunt harvest	Set-days / badger	Badgers / 1000 set-days	Badgers / trapper	Pelt price (\$)
1982–83	250	—	725	—	118	8.5	2.9	8.20
1983–84	188	—	560	—	212	4.7	3.0	8.56
1984–85	225	—	670	—	227	4.4	3.0	10.14
1985–86	194	—	496	—	182	5.5	2.6	3.96
1986–87	198	—	424	—	146	6.8	2.1	7.64
1987–88	212	—	459	—	84	11.9	2.2	6.04
1988–89	204	—	417	—	93	10.7	2.0	4.66
1989–90	207	—	366	—	80	12.5	1.8	4.78
1990–91	81	—	172	—	50	19.9	2.1	7.27
1991–92	134	—	237	—	71	14.1	1.8	8.50
1992–93	148	—	232	—	76	13.2	1.6	9.95
1993–94	143	—	238	—	188	5.3	1.7	7.18
1994–95	182	—	327	—	77	13.0	1.8	13.93
1995–96	133	—	276	—	47	21.4	2.1	10.52
1996–97	118	—	222	—	54	18.7	1.9	13.01
1997–98	98	—	271	—	83	12.1	2.7	6.59
1998–99	135	—	318	—	117	8.5	2.4	16.96
1999–00	177	—	433	—	64	15.5	2.4	13.04
2000–01	189	—	450	—	147	6.8	2.4	17.18
2001–02	137	—	275	—	288	3.5	2.0	15.60
2002–03	234	—	541	—	165	6.0	2.3	13.73
2003–04	223	—	453	—	341	2.9	2.0	18.72
2004–05	203	—	432	—	184	5.4	2.1	13.66
2005–06	70	—	120	—	324	3.1	1.7	15.02
2006–07	187	—	—	—	—	—	—	18.07
2007–08	171	—	275	—	98	10.2	1.6	14.14
2008–09	146	—	287	—	282	3.5	2.0	17.41
2009–10	78	196	138	—	113	8.8	1.8	19.34
2010–11	115	115	194	—	35	28.5	1.7	17.27
2011–12	110	82	46	89	120	8.3	0.4	20.44
2012–13	99	147	117	38	163	6.1	1.2	17.36
2013–14	91	216	98	57	180	5.5	1.1	15.73
2014–15	92	297	89	32	183	5.5	1.0	11.69
2015–16	103	464	140	44	384	2.6	0.9	7.63
2016–17	78	222	233	31	37	27.1	3.0	10.28
2017–18	91	145	79	68	119	8.4	0.9	6.51
2018–19	85	115	161	93	101	9.9	3.0	9.30
2019–20	60	99	93	35	61	16.5	2.1	18.12
2020–21	91	137	98	72	105	9.5	1.9	—
2021–22	80	196	40	62	186	5.4	1.8	45.17
Average	145	187	287	56	143	10.0	2.0	12.91

*Trappers and badgers per trapper include hunters and their harvest. Set-days per badger and badgers per 1000 set-days are based only on trapping activity, and do not include hunt harvest or hunter-days afield.

Statewide badger harvest trends, Utah 1982–2022.



Badger trapping harvest statistics by county and ecoregion, Utah 2021–2022.

County	n	Trappers afield	Trap harvest	Traps set	Trapping days	Set-days	Set-days / badger	Badgers / 1000 set-days	Badgers / trapper
Beaver	0	0	—	—	—	—	—	—	—
Box Elder	0	0	—	—	—	—	—	—	—
Iron	0	0	—	—	—	—	—	—	—
Juab	0	0	—	—	—	—	—	—	—
Millard	1	2	2	45	112	2013	810.0	1.2	1.0
Tooele	1	2	10	5	17	35	3.5	285.7	4.0
Great Basin totals	2	5	12	50	129	2048	164.8	6.1	2.5
Cache	0	0	—	—	—	—	—	—	—
Davis	0	0	—	—	—	—	—	—	—
Morgan	0	0	—	—	—	—	—	—	—
Piute	1	2	2	50	224	4474	1800.0	0.6	1.0
Rich	0	0	—	—	—	—	—	—	—
Salt Lake	0	0	—	—	—	—	—	—	—
Sanpete	1	2	2	15	17	104	42.0	23.8	1.0
Sevier	0	0	—	—	—	—	—	—	—
Summit	1	2	2	5	75	149	60.0	16.7	1.0
Utah	2	5	15	35	70	522	35.0	28.6	3.0
Wasatch	0	0	—	—	—	—	—	—	—
Weber	0	0	—	—	—	—	—	—	—
Rocky Mountain totals	5	12	22	104	385	5250	234.7	4.3	1.8
Daggett	0	0	—	—	—	—	—	—	—
Duchesne	0	0	—	—	—	—	—	—	—
Uintah	1	2	2	5	17	35	14.0	71.4	1.0
Uintah Basin totals	1	2	2	5	17	35	14.0	71.4	1.0
Carbon	0	0	—	—	—	—	—	—	—
Emery	1	2	2	5	25	50	20.0	50.0	1.0
Garfield	0	0	—	—	—	—	—	—	—
Grand	0	0	—	—	—	—	—	—	—
Kane	0	0	—	—	—	—	—	—	—
San Juan	0	0	—	—	—	—	—	—	—
Washington	0	0	—	—	—	—	—	—	—
Wayne	0	0	—	—	—	—	—	—	—
Colorado Plateau totals	1	2	2	5	25	50	20.0	50.0	1.0
Unknown	0	0	—	—	—	—	—	—	—
Statewide totals*	9	22	40	164	557	7383	185.6	5.4	1.8

*Statewide totals for sample size and trappers afield are not totals of the columns because trappers trapped multiple counties.

Badger hunting harvest statistics by county and ecoregion, Utah 2021–2022.

County	n	Hunters afield	Hunt harvest	Hunter-days afield	Hunter-days / badger	Badgers / hunter
Beaver	2	5	2	447	180.0	0.5
Box Elder	2	5	10	52	5.3	2.0
Iron	0	0	—	—	—	—
Juab	0	0	—	—	—	—
Millard	0	0	—	—	—	—
Tooele	1	2	5	5	1.0	2.0
Great Basin totals	5	12	17	505	29.0	1.4
Cache	0	0	—	—	—	—
Davis	0	0	—	—	—	—
Morgan	2	5	7	5	0.7	1.5
Piute	0	0	—	—	—	—
Rich	1	2	0	2	—	0.0
Salt Lake	1	2	0	2	—	0.0
Sanpete	0	0	—	—	—	—
Sevier	1	2	0	2	—	0.0
Summit	3	7	25	227	9.2	3.3
Utah	0	0	—	—	—	—
Wasatch	0	0	—	—	—	—
Weber	0	0	—	—	—	—
Rocky Mountain totals	8	20	32	240	7.4	1.6
Daggett	1	2	2	0	0.0	1.0
Duchesne	0	0	—	—	—	—
Uintah	0	0	—	—	—	—
Uintah Basin totals	1	2	2	0	0.0	1.0
Carbon	1	2	0	0	—	0.0
Emery	1	2	0	2	—	0.0
Garfield	2	5	2	5	2.0	0.5
Grand	0	0	—	—	—	—
Kane	1	2	2	0	0.0	1.0
San Juan	1	2	0	2	—	0.0
Washington	0	0	—	—	—	—
Wayne	1	2	0	0	—	0.0
Colorado Plateau totals	7	17	5	10	2.0	0.3
Unknown	2	5	5	57	11.5	1.0
Statewide totals*	23	57	62	812	13.1	1.1

*Statewide totals for sample size and hunters afield are not totals of the columns because hunters hunted multiple counties.

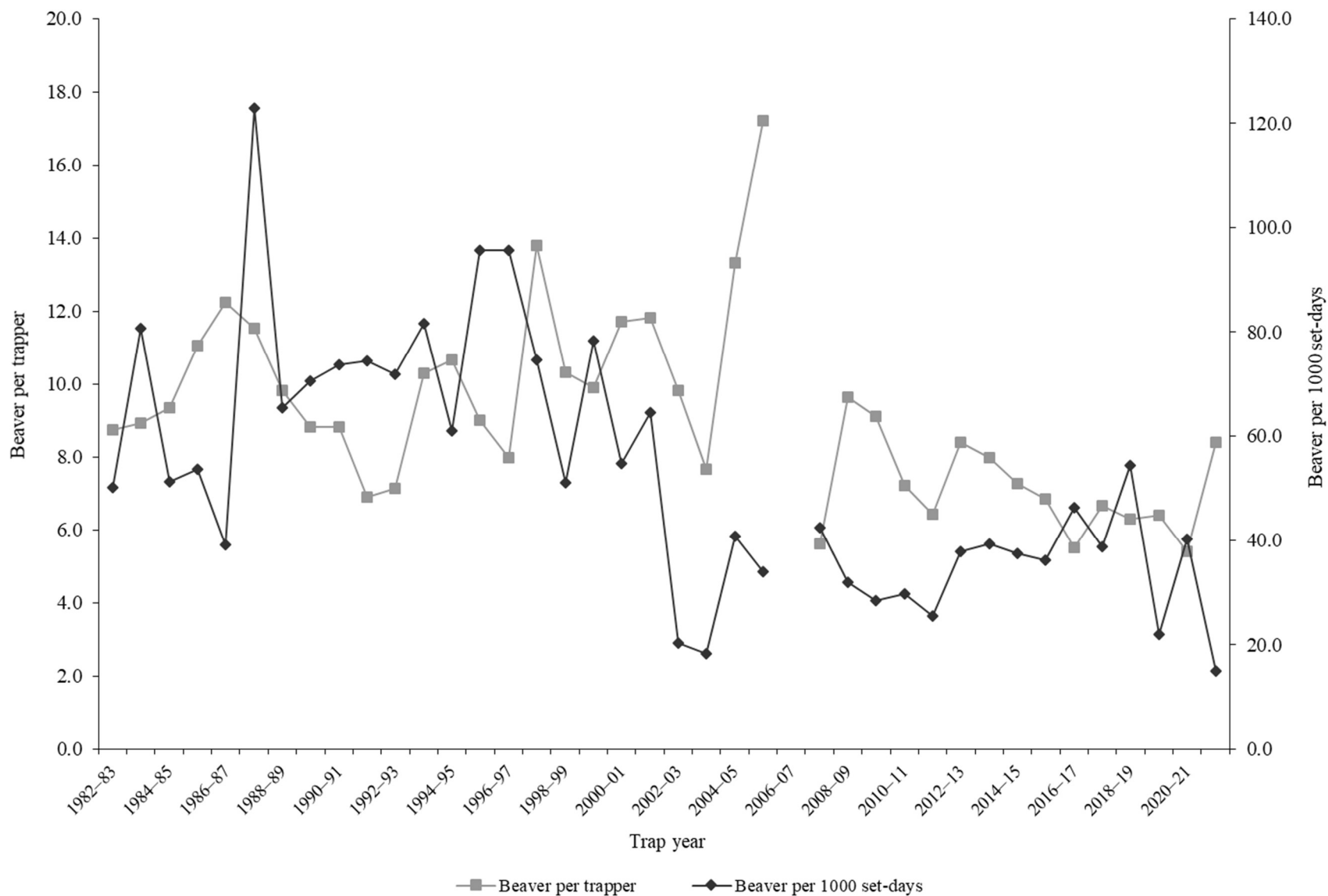
BEAVER

Statewide beaver harvest statistics*, Utah 1982–2022.

Trap year	Trappers afield	Incidental harvest	Trap harvest	Hunt harvest	Set-days / beaver	Beavers / 1000 set-days	Beavers / trapper	Pelt price (\$)
1982–83	181	—	1584	—	20	50.1	8.8	12.89
1983–84	200	—	1788	—	12	80.8	8.9	14.10
1984–85	285	—	2664	—	20	51.3	9.3	16.44
1985–86	293	—	3242	—	19	53.7	11.1	14.64
1986–87	338	—	4138	—	26	39.2	12.2	22.64
1987–88	409	—	4716	—	8	122.9	11.5	14.67
1988–89	277	—	2721	—	15	65.4	9.8	10.02
1989–90	390	—	3436	—	14	70.5	8.8	11.93
1990–91	176	—	1551	—	14	73.8	8.8	6.49
1991–92	216	—	1492	—	13	74.5	6.9	8.94
1992–93	134	—	956	—	14	71.9	7.1	7.74
1993–94	171	—	1761	—	12	81.6	10.3	9.59
1994–95	239	—	2551	—	16	61.0	10.7	12.65
1995–96	170	—	1530	—	10	95.7	9.0	13.40
1996–97	163	—	1299	—	10	95.7	8.0	21.15
1997–98	210	—	2896	—	13	74.6	13.8	13.58
1998–99	286	—	2950	—	20	51.0	10.3	9.37
1999–00	185	—	1830	—	13	78.4	9.9	10.98
2000–01	170	—	1992	—	18	54.7	11.7	10.32
2001–02	143	—	1689	—	16	64.5	11.8	10.85
2002–03	175	—	1720	—	49	20.3	9.8	9.47
2003–04	232	—	1781	—	55	18.2	7.7	14.10
2004–05	200	—	2664	—	25	40.7	13.3	13.91
2005–06	130	—	2239	—	29	33.9	17.2	17.75
2006–07	122	—	—	—	—	—	—	16.31
2007–08	133	—	745	—	24	42.5	5.6	17.50
2008–09	121	—	1165	—	31	31.9	9.6	13.15
2009–10	209	6	1904	—	35	28.5	9.1	11.60
2010–11	144	13	1039	—	34	29.8	7.2	12.76
2011–12	157	18	1008	—	39	25.4	6.4	15.61
2012–13	267	17	2245	14	26	37.9	8.4	20.26
2013–14	240	98	1913	10	25	39.3	8.0	14.33
2014–15	183	47	1332	9	27	37.5	7.3	11.60
2015–16	217	22	1486	4	28	36.1	6.8	7.46
2016–17	176	3	970	0	22	46.3	5.5	11.20
2017–18	141	5	940	0	26	38.8	6.7	6.34
2018–19	113	9	645	87	18	54.4	6.3	—
2019–20	138	81	863	6	46	21.9	6.4	9.15
2020–21	176	10	909	10	25	40.3	5.4	—
2021–22	137	293	1104	5	67	15.0	8.4	14.89
Average	201	48	1884	15	24	52.6	9.1	12.89

*Trappers and beavers per trapper include hunters and their harvest. Set-days per beaver and beavers per 1000 set-days are based only on trapping activity, and do not include hunt harvest or hunter-days afield

Statewide beaver harvest trends, Utah 1982–2022.



Beaver trapping harvest statistics by county and ecoregion, Utah 2021–2022.

County	n	Trappers afield	Trap harvest	Traps set	Trapping days	Set-days	Set-days / beaver	Beavers / 1000 set-days	Beavers / trapper
Beaver	1	2	5	5	10	20	4.0	250.0	2.0
Box Elder	5	12	117	85	214	1551	13.3	75.3	9.4
Iron	0	0	—	—	—	—	—	—	—
Juab	1	2	57	37	50	746	13.0	76.7	23.0
Millard	0	0	—	—	—	—	—	—	—
Tooele	0	0	—	—	—	—	—	—	—
Great Basin totals	7	17	179	127	273	2317	12.9	77.3	10.3
Cache	10	25	221	224	626	6962	31.5	31.8	8.9
Davis	3	7	45	144	353	13942	311.6	3.2	6.0
Morgan	4	10	122	164	343	14124	116.0	8.6	12.3
Piute	1	2	75	25	75	746	10.0	100.0	30.0
Rich	0	0	—	—	—	—	—	—	—
Salt Lake	2	5	52	137	308	13845	265.2	3.8	10.5
Sanpete	1	2	7	12	5	25	3.3	300.0	3.0
Sevier	1	2	2	5	35	70	28.0	35.7	1.0
Summit	2	5	60	37	142	1432	24.0	41.7	12.0
Utah	8	20	65	114	433	2535	39.2	25.5	3.3
Wasatch	2	5	5	10	10	25	5.0	200.0	1.0
Weber	4	10	89	144	296	13736	153.5	6.5	9.0
Rocky Mountain totals	38	94	743	1017	2625	67442	90.7	11.0	7.9
Daggett	1	2	17	20	50	398	22.9	43.8	7.0
Duchesne	2	5	12	17	42	129	10.4	96.2	2.5
Uintah	4	10	57	102	176	2018	35.3	28.3	5.8
Uintah Basin totals	7	17	87	139	268	2545	29.3	34.2	5.0
Carbon	1	2	5	5	47	94	19.0	52.6	2.0
Emery	2	5	17	17	55	124	7.1	140.0	3.5
Garfield	0	0	—	—	—	—	—	—	—
Grand	0	0	—	—	—	—	—	—	—
Kane	0	0	—	—	—	—	—	—	—
San Juan	1	2	7	2	70	70	9.3	107.1	3.0
Washington	3	7	25	37	137	537	21.6	46.3	3.3
Wayne	1	2	5	15	35	209	42.0	23.8	2.0
Colorado Plateau totals	8	20	60	77	343	1034	17.3	57.7	3.0
Unknown	1	2	35	30	7	89	2.6	388.9	14.0
Statewide totals*	53	132	1104	1390	3517	73428	66.5	15.0	8.4

*Statewide totals for sample size and trappers afield are not totals of the columns because trappers trapped multiple counties.

BOBCAT

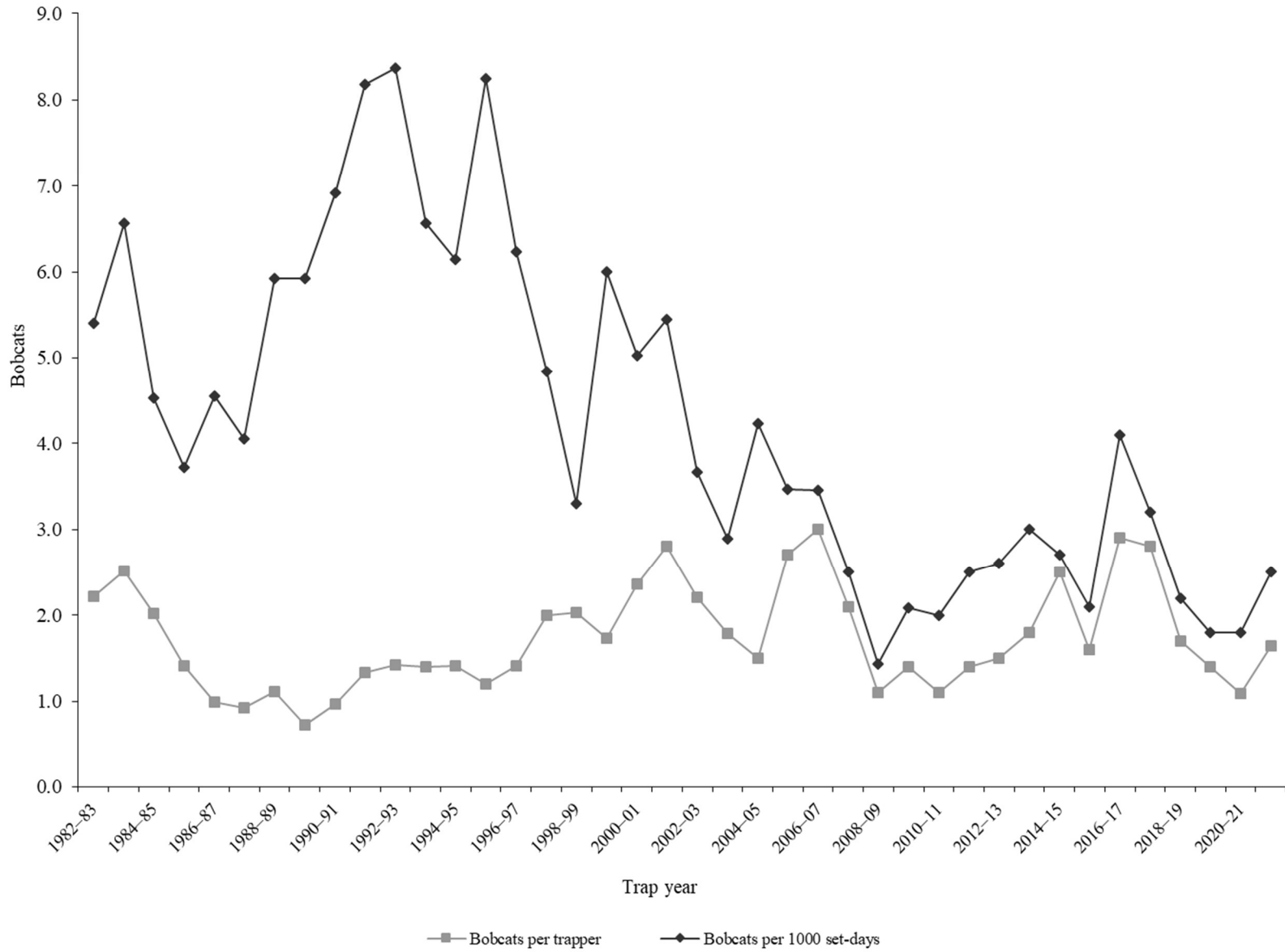
Statewide bobcat trapping harvest statistics, Utah 1982–2022.

Trap year	Trappers afield	Trap harvest	Set-days	Set-days / bobcat	Bobcats / 1000 set-days	Bobcats / trapper	Pelt price (\$)
1982–83	1145	2540	469979	185	5.4	2.2	171.00
1983–84	1050	2640	401841	152	6.6	2.5	189.00
1984–85	1253	2532	559480	221	4.5	2.0	202.00
1985–86	1083	1530	411493	269	3.7	1.4	197.00
1986–87	1036	1024	224778	220	4.6	1.0	309.00
1987–88	1108	1023	252680	247	4.0	0.9	245.00
1988–89	941	1042	175990	169	5.9	1.1	221.00
1989–90	1167	843	142360	169	5.9	0.7	102.00
1990–91	542	527	76218	145	6.9	1.0	87.00
1991–92	726	968	118293	122	8.2	1.3	104.00
1992–93	827	1171	139949	120	8.4	1.4	90.00
1993–94	900	1256	191367	152	6.6	1.4	118.60
1994–95	914	1293	210522	163	6.1	1.4	70.02
1995–96	749	896	108594	121	8.3	1.2	79.51
1996–97	615	866	138899	160	6.2	1.4	147.80
1997–98	619	1234	255147	207	4.8	2.0	60.89
1998–99	1031	2092	633774	303	3.3	2.0	55.86
1999–00	828	1430	238152	167	6.0	1.7	82.64
2000–01	852	2008	399609	199	5.0	2.4	93.56
2001–02	666	1866	342678	184	5.4	2.8	147.66
2002–03	984	2176	593692	273	3.7	2.2	270.33
2003–04	1133	2027	701383	346	2.9	1.8	203.17
2004–05	1300	1954	462019	236	4.2	1.5	221.65
2005–06	979	2625	757380	289	3.5	2.7	358.56
2006–07	1017	3037	877870	289	3.5	3.0	197.53
2007–08	985	2091	836519	400	2.5	2.1	388.43
2008–09	1630	1796	1258813	701	1.4	1.1	238.69
2009–10	717	1017	488709	481	2.1	1.4	223.71
2010–11	771	846	416474	492	2.0	1.1	368.95
2011–12	755	1094	437912	400	2.5	1.4	456.16
2012–13	836	1214	475902	392	2.6	1.5	560.96
2013–14	953	1690	562430	333	3.0	1.8	407.44
2014–15	1105	2776	1036043	373	2.7	2.5	223.11
2015–16	982	1543	739720	479	2.1	1.6	151.63
2016–17	571	1657	402966	243	4.1	2.9	273.23
2017–18	957	2683	833255	311	3.2	2.8	236.45
2018–19	796	1372	611330	446	2.2	1.7	388.43
2019–20	701	1007	553322	550	1.8	1.4	264.14
2020–21	762	833	454600	546	1.8	1.1	—
2021–22	498	815	329996	405	2.5	1.6	415.16
Average	912	1576	458053	291	4.3	1.7	221.06

Statewide bobcat hunting harvest statistics, Utah 2005–2022.

Trap year	Hunters afield	Hunt harvest	Hunter-days afield	Hunter-days / bobcat	Bobcats / hunter
2005–06	612	301	8194	27	0.5
2006–07	440	340	10408	31	0.8
2007–08	557	346	10089	29	0.6
2008–09	438	266	7360	28	0.6
2009–10	370	150	5253	35	0.4
2010–11	355	156	5888	38	0.4
2011–12	329	151	4146	28	0.5
2012–13	206	151	2739	18	0.7
2013–14	182	180	2901	16	1.0
2014–15	305	143	4203	29	0.5
2015–16	298	140	3819	27	0.5
2016–17	267	199	3446	17	0.7
2017–18	341	262	4620	18	0.8
2018–19	211	280	2832	10	1.3
2019–20	243	166	3330	20	0.7
2020–21	242	178	2970	17	0.7
2021–22	208	150	2314	15	0.7
Average	330	209	4971	24	0.7

Statewide bobcat trapping harvest trends, Utah 1982–2022.



Bobcat trapping harvest statistics by county and ecoregion, Utah 2021–2022.

County	n	Trappers afield	Trap harvest**	Traps set	Trapping days	Set-days	Set-days / bobcat	Bobcats / 1000 set-days	Bobcats / trapper
Beaver	9	27	65	761	207	8819	135.7	7.4	2.4
Box Elder	11	33	47	1085	554	27458	584.2	1.7	1.4
Iron	5	15	31	1078	127	7584	244.6	4.1	2.1
Juab	14	42	64	1205	447	15370	240.2	4.2	1.5
Millard	9	27	20	1134	341	33440	1672.0	0.6	0.7
Tooele	16	48	10	1949	481	21024	2102.4	0.5	0.2
Great Basin totals	64	193	237	7212	2157	113696	479.7	2.1	1.2
Cache	8	24	8	870	254	11112	1389.0	0.7	0.3
Davis	1	3	0	30	12	121	—	0.0	0.0
Morgan	6	18	5	590	187	10194	2038.8	0.5	0.3
Piute	2	6	7	124	72	1486	212.3	4.7	1.2
Rich	3	9	6	329	184	7959	1326.5	0.8	0.7
Salt Lake	0	0	—	—	—	—	—	—	—
Sanpete	3	9	15	405	172	9278	618.5	1.6	1.7
Sevier	9	27	108	1279	441	20180	186.9	5.4	4.0
Summit	4	12	10	592	106	5077	507.7	2.0	0.8
Utah	14	42	31	1484	435	17190	554.5	1.8	0.7
Wasatch	7	21	6	674	106	6870	1145.0	0.9	0.3
Weber	6	18	3	567	124	8204	2734.7	0.4	0.2
Rocky Mountain totals	63	190	199	6943	2093	97670	490.8	2.0	1.0
Daggett	2	6	5	60	66	846	169.2	5.9	0.8
Duchesne	8	24	34	776	239	9879	290.6	3.4	1.4
Uintah	10	30	60	1130	320	13918	232.0	4.3	2.0
Uintah Basin totals	20	60	99	1966	625	24642	248.9	4.0	1.7
Carbon	6	18	39	504	154	4485	115.0	8.7	2.2
Emery	10	30	32	1368	269	12948	404.6	2.5	1.1
Garfield	9	27	58	1568	350	22314	384.7	2.6	2.1
Grand	1	3	5	181	121	7249	1449.8	0.7	1.7
Kane	6	18	21	822	233	13208	629.0	1.6	1.2
San Juan	12	36	60	1284	432	21798	363.3	2.8	1.7
Washington	9	27	52	1316	217	10984	211.2	4.7	1.9
Wayne	4	12	13	275	45	1003	77.2	13.0	1.1
Colorado Plateau totals	57	172	280	7317	1821	93988	335.7	3.0	1.6
Unknown	2	6	0	187	12	749	—	0.0	0.0
Statewide totals*	165	498	815	23439	6697	329996	404.9	2.5	1.6

*Statewide totals for sample size and trappers afield are not totals of the columns because trappers trapped multiple counties.

**Total harvest numbers are from pelt check-in, while numbers of trappers afield and effort are determined from harvest survey.

Bobcat hunting harvest statistics by county and ecoregion, Utah 2020–2022.

County	n	Hunters afield	Hunt harvest**	Hunter-days afield	Hunter-days / bobcat	Bobcats / hunter
Beaver	2	6	6	76	12.7	1.0
Box Elder	9	27	8	127	15.9	0.3
Iron	1	3	10	12	1.2	3.3
Juab	7	21	10	157	15.7	0.5
Millard	5	15	6	130	21.7	0.4
Tooele	12	36	3	175	58.3	0.1
Great Basin totals	36	109	43	677	15.7	0.4
Cache	8	24	2	160	80.0	0.1
Davis	0	0	2	—	—	—
Morgan	2	6	4	30	7.5	0.7
Piute	0	1	—	—	—	—
Rich	4	12	10	24	2.4	0.8
Salt Lake	0	0	—	—	—	—
Sanpete	4	12	6	157	26.2	0.5
Sevier	1	3	1	181	181.0	0.3
Summit	5	15	16	172	10.8	1.1
Utah	5	15	12	48	4.0	0.8
Wasatch	1	3	7	45	6.4	2.3
Weber	1	3	1	15	15.0	0.3
Rocky Mountain totals	31	94	61	832	13.6	0.6
Daggett	1	3	2	24	12.0	0.7
Duchesne	4	12	3	136	45.3	0.3
Uintah	7	21	7	85	12.1	0.3
Uintah Basin totals	12	36	12	245	20.4	0.3
Carbon	2	6	8	21	2.6	1.3
Emery	5	15	4	136	34.0	0.3
Garfield	1	3	7	9	1.3	2.3
Grand	4	12	3	142	47.3	0.3
Kane	1	3	4	9	2.3	1.3
San Juan	4	12	1	148	148.0	0.1
Washington	1	3	7	3	0.4	2.3
Wayne	1	3	0	9	—	0.0
Colorado Plateau totals	19	57	34	477	14.0	0.6
Unknown	2	6	0	82	—	0.0
Statewide totals*	69	208	150	2314	15.4	0.7

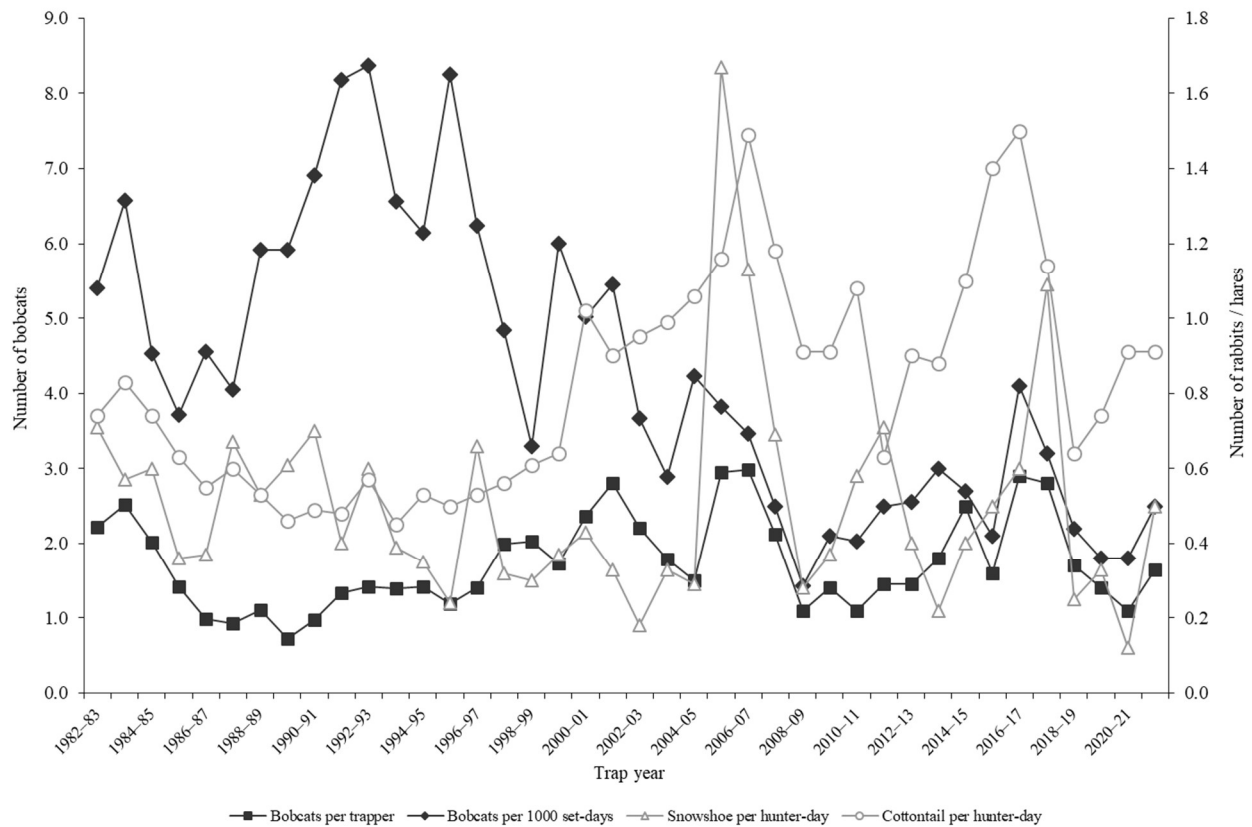
*Statewide totals for sample size and hunters afield are not totals of the columns because hunters hunted multiple counties.

**Total harvest numbers are from pelt check-in, while numbers of hunters afield and effort are determined from harvest survey.

Prey index

Lagomorph densities are generally considered to be a good indicator of bobcat recruitment and survival because high lagomorph populations provide an essential prey base for dispersing bobcats. When lagomorph populations are high or increasing, the bobcat population has also increased or at least remained stable. Thus, low populations of lagomorphs will reduce the likelihood of younger bobcats surviving to the next year. Cottontail rabbit and snowshoe hare data were from the Utah Upland Game Annual Report 2021–22 (2021–22 upland game seasons).

Relationships in harvest statistics between bobcat and prey, Utah 1982–2022.



Bobcat harvest age and sex ratios, Utah 1985–2022.

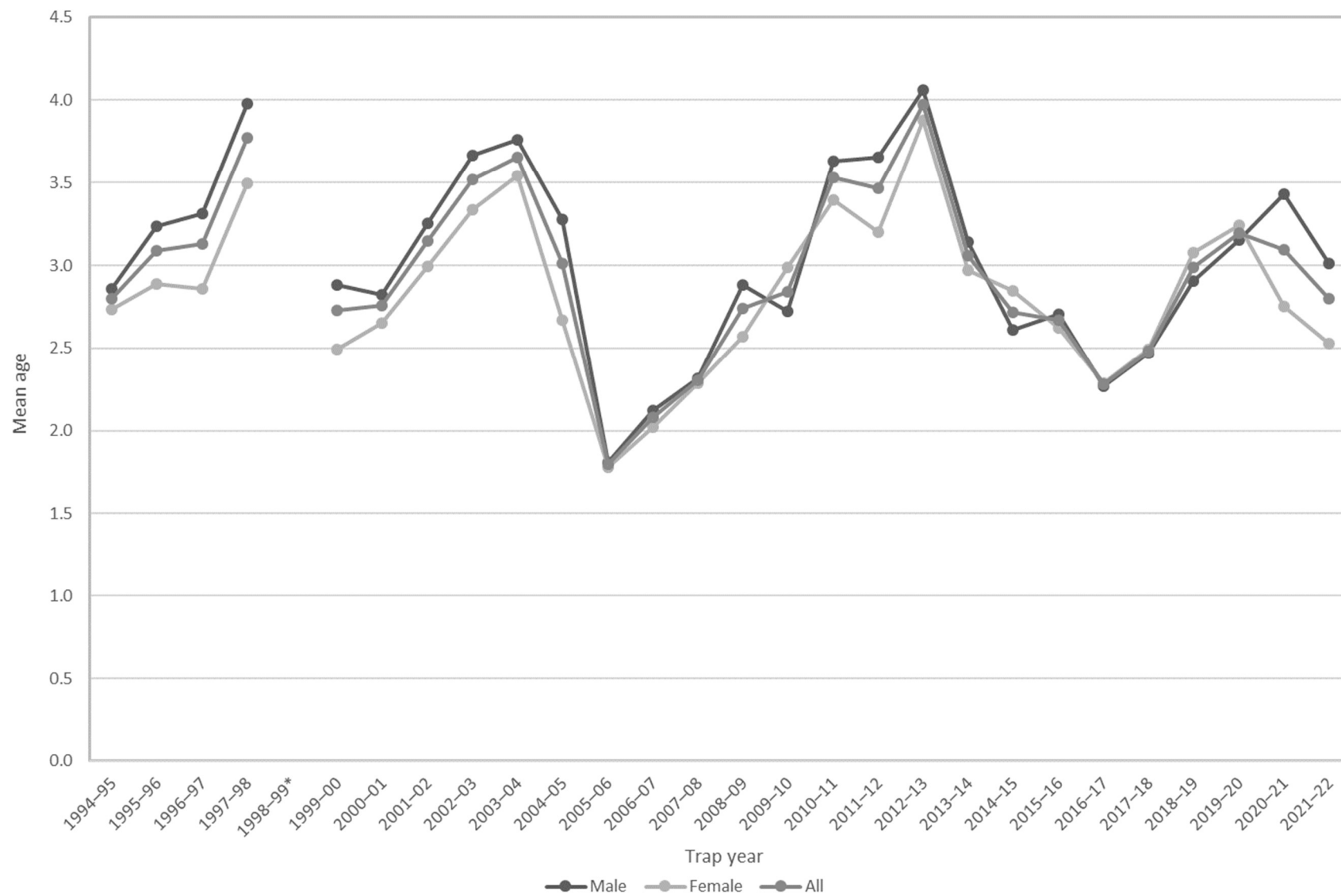
Trap year	Kittens / adult female	Kittens / adult	Male kittens / female kittens	Juveniles / adult	Juv. males / juv. females	Proportion juveniles in harvest	Proportion females in harvest	Males / females
1985–86	0.5	0.2	1.0	—	—	—	—	1.2
1986–87	0.7	0.3	0.9	—	—	—	—	1.1
1987–88	1.2	0.5	1.0	—	—	—	—	1.1
1988–89	1.1	0.4	1.1	—	—	—	—	1.3
1989–90	0.8	0.3	1.0	—	—	—	—	1.4
1990–91	0.8	0.3	0.6	—	—	—	—	1.2
1991–92	0.9	0.7	1.3	—	—	—	—	1.5
1992–93	0.9	1.0	1.2	—	—	—	—	1.4
1993–94	1.6	0.6	1.0	—	—	—	—	1.3
1994–95	0.6	0.6	1.1	0.6	1.1	0.36	0.44	1.3
1995–96	1.4	0.5	0.7	0.5	1.0	0.35	0.44	1.3
1996–97	1.9	0.7	1.1	0.7	1.1	0.41	0.41	1.4
1997–98	1.2	0.4	0.9	0.4	0.9	0.30	0.42	1.4
1998–99	2.1	0.8	1.1	—	—	—	—	1.3
1999–00	0.8	0.3	1.0	1.0	1.4	0.50	0.39	1.6
2000–01	0.7	0.3	1.1	0.9	1.3	0.47	0.39	1.6
2001–02	0.4	0.2	1.0	0.6	1.2	0.38	0.41	1.4
2002–03	0.4	0.2	0.9	0.4	1.0	0.28	0.45	1.2
2003–04	0.6	0.3	0.9	0.5	1.0	0.31	0.47	1.1
2004–05	0.8	0.3	0.8	1.2	1.1	0.55	0.44	1.3
2005–06	5.8	2.5	1.4	2.5	1.4	0.72	0.43	1.4
2006–07	4.1	1.5	1.4	1.5	1.4	0.60	0.43	1.3
2007–08	3.0	1.3	1.1	1.4	1.1	0.56	0.43	1.3
2008–09	0.4	0.2	0.8	0.7	1.0	0.42	0.45	1.2
2009–10	0.7	0.3	1.0	0.6	1.2	0.38	0.47	1.1
2010–11	0.6	0.2	1.1	0.5	1.2	0.31	0.43	1.4
2011–12	0.8	0.3	1.1	0.5	1.2	0.35	0.45	1.2
2012–13	0.6	0.3	0.9	0.5	0.9	0.35	0.48	1.1
2013–14	0.9	0.4	0.9	0.8	0.9	0.46	0.45	1.2
2014–15	1.6	0.8	1.0	1.5	1.2	0.60	0.45	1.2
2015–16	1.4	0.6	0.9	1.6	1.4	0.62	0.44	1.3
2016–17	1.4	0.6	0.9	1.8	1.3	0.64	0.41	1.5
2017–18	0.7	0.3	0.7	1.1	1.1	0.52	0.45	1.2
2018–19	0.2	0.1	0.9	0.6	1.2	0.36	0.48	1.1
2019–20	0.4	0.2	0.9	0.4	0.9	0.28	0.44	1.3
2020–21	1.0	0.4	0.5	0.7	0.7	0.42	0.46	1.2
2021–22	0.9	0.3	0.8	1.3	1.2	0.56	0.49	1.0
Average	1.2	0.5	1.0	0.9	1.1	0.45	0.44	1.3

In annual reports prior to 2005–06, the "juvenile" age category referred only to kittens (age 0.5) while "adults" included all bobcats age 1.5 and older. Beginning with the 2005–06 annual report, the term "juvenile" now refers to kittens and yearlings (ages 0.5–1.5), while "adult" includes all bobcats age 2.5 and older.

Adult bobcat survival (from Chapman-Robson estimator), Utah 1985–2022.

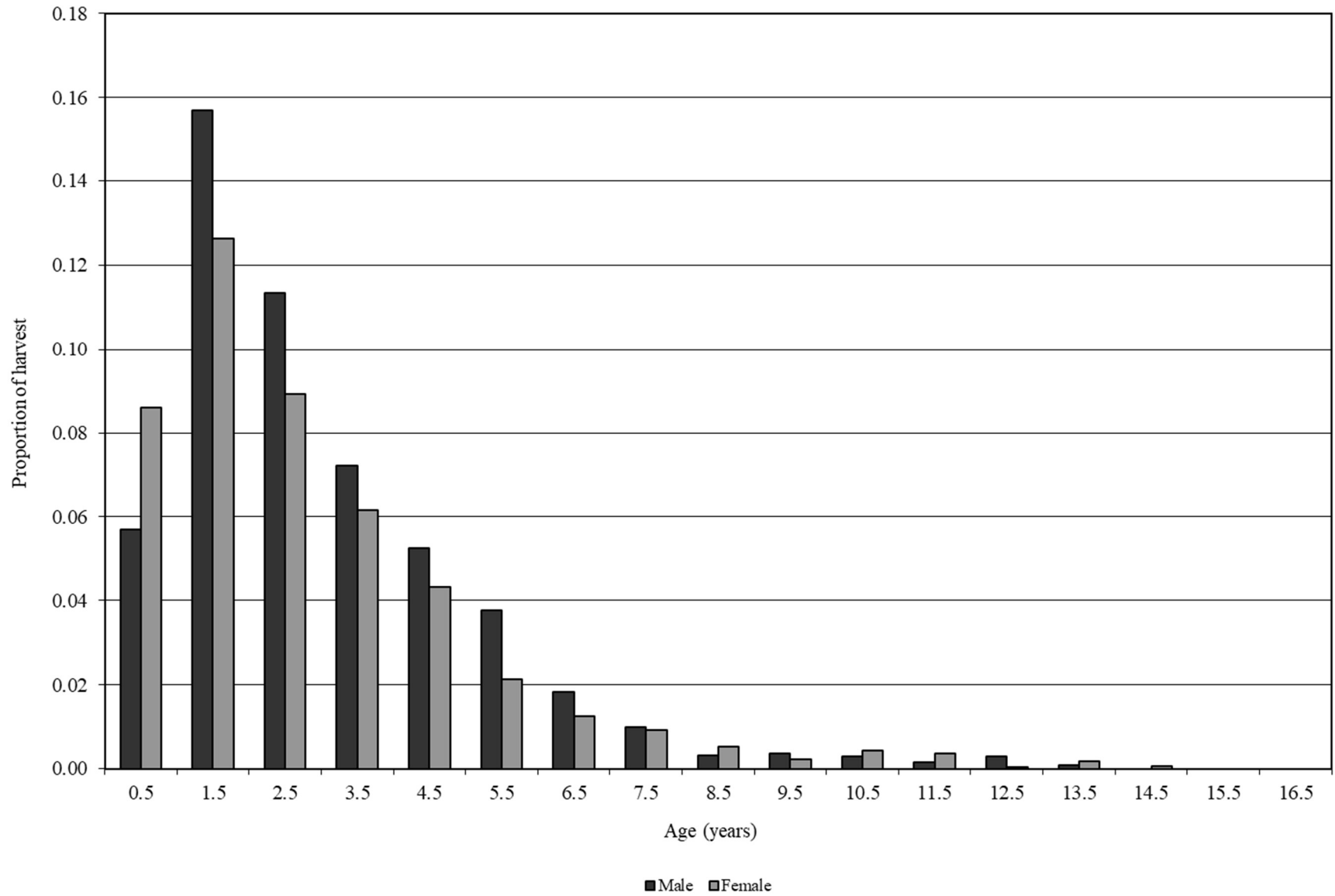
Trap year	Survival (%)	95% confidence interval	Chi-square value, degrees of freedom
1985–86	63	60–65	13.2, 9df
1986–87	63	60–65	34.1, 9df
1987–88	65	61–68	19.9, 9df
1988–89	64	60–68	17.3, 8df
1989–90	67	63–71	19.4, 8df
1990–91	58	53–62	28.5, 12df
1991–92	58	55–60	47.9, 14df
1992–93	59	56–63	19.9, 12df
1993–94	54	52–57	34.2, 11df
1994–95	57	54–59	17.2, 14df
1995–96	64	61–66	40.0, 11df
1996–97	68	65–70	23.4, 12df
1997–98	71	69–74	19.1, 14df
1998–99	71	70–73	35.2, 13df
1999–00	66	64–68	41.0, 15df
2000–01	64	62–66	86.0, 11df
2001–02	65	63–67	87.3, 14df
2002–03	67	65–68	175.5, 13df
2003–04	71	70–72	245.6, 12df
2004–05	74	73–76	83.9, 15df
2005–06	68	65–70	15.7, 12df
2006–07	53	48–58	41.9, 9df
2007–08	58	54–62	63.6, 12df
2008–09	57	54–61	64.5, 14df
2009–10	59	56–62	60.1, 12df
2010–11	69	66–71	90.0, 13df
2011–12	70	66–73	22.7, 13df
2012–13	75	72–78	87.2, 11df
2013–14	70	66–74	52.8, 12df
2014–15	74	71–77	62.2, 13df
2015–16	73	70–76	66.6, 13df
2016–17	65	61–68	93.1, 10df
2017–18	57	53–61	89.8, 11df
2018–19	59	55–63	42.8, 12df
2019–20	60	57–64	16.4, 11df
2020–21	68	65–72	52.9, 12df
2021–22	70	66–74	46.9, 7df
Average	65	—	—

Average age of harvested bobcats, Utah 1999–2022.



*Excludes age structure data from the 1998–99 trap season.

5-yr age structure of harvested bobcats, Utah 2016–2022.



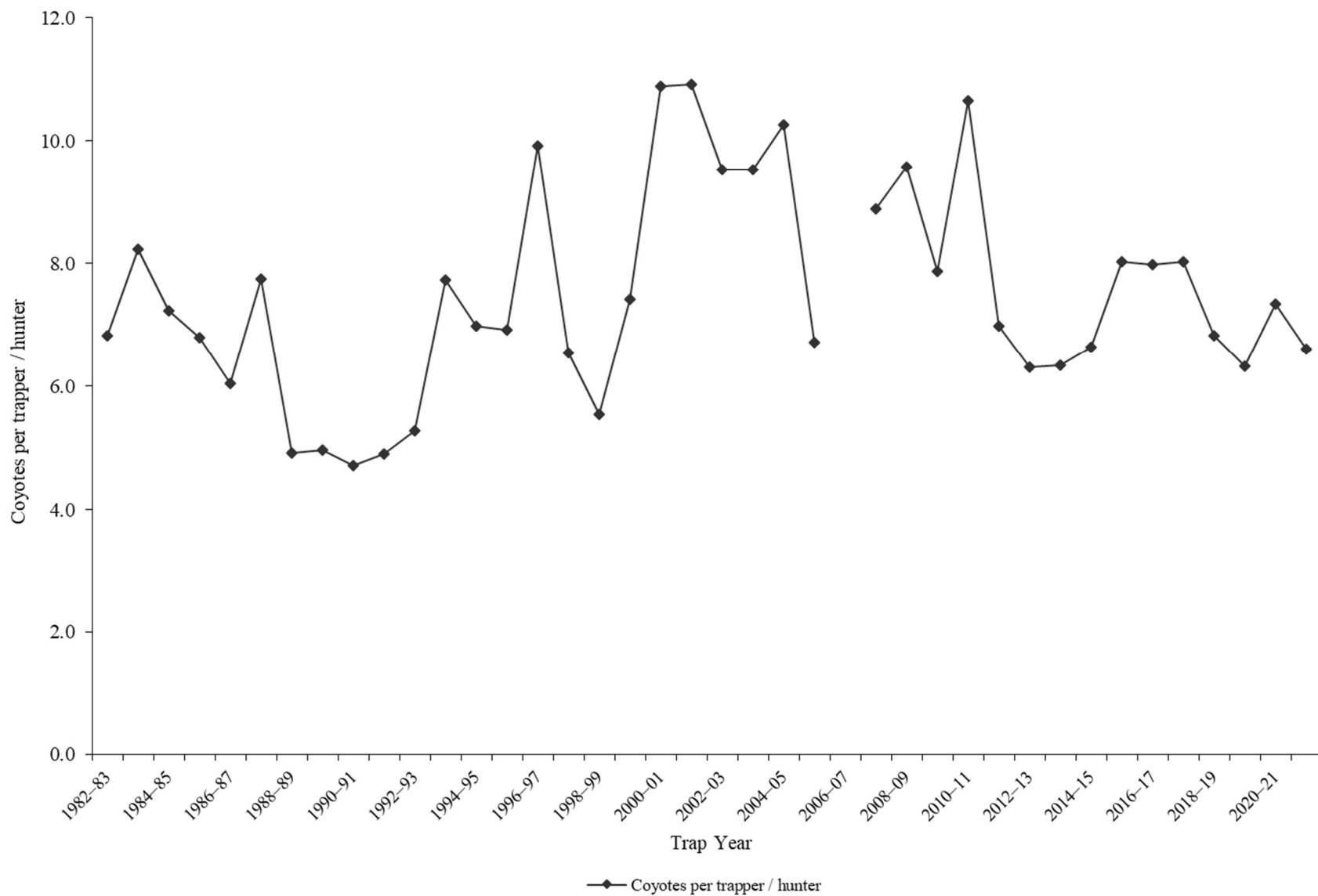
COYOTE

Statewide coyote harvest statistics, Utah 1982–2022.

Trap year	Trappers / hunters afield	Wildlife Services harvest	Incidental harvest	Trap harvest	Hunt harvest	Coyotes per trapper / hunter*	Pelt price (\$)
1982–83	841	4130	—	5738	—	6.8	35.42
1983–84	715	5063	—	5878	—	8.2	25.92
1984–85	828	5427	—	5991	—	7.2	32.35
1985–86	714	5045	—	4851	—	6.8	19.65
1986–87	819	4116	—	4947	—	6.0	33.64
1987–88	893	4338	—	6919	—	7.7	15.55
1988–89	652	4853	—	3200	—	4.9	8.47
1989–90	671	5168	—	3331	—	5.0	8.68
1990–91	389	4444	—	1831	—	4.7	11.41
1991–92	664	4347	—	3255	—	4.9	20.00
1992–93	695	4932	—	3666	—	5.3	15.75
1993–94	679	5827	—	5247	—	7.7	24.58
1994–95	754	3893	—	5267	—	7.0	12.51
1995–96	632	4165	—	4372	—	6.9	15.49
1996–97	405	4484	—	4017	—	9.9	18.73
1997–98	494	4169	—	3228	—	6.5	10.80
1998–99	782	3464	—	4337	—	5.5	10.80
1999–00	473	4534	—	3510	—	7.4	19.14
2000–01	456	4275	—	4966	—	10.9	14.39
2001–02	399	3874	—	4354	—	10.9	16.17
2002–03	572	3394	—	5446	—	9.5	32.62
2003–04	699	3897	—	6660	—	9.5	25.74
2004–05	699	4125	—	7173	—	10.3	20.10
2005–06	630	4820	328	1190	3039	6.7	30.45
2006–07	830	5041	—	—	—	—	26.37
2007–08	859	5618	821	4055	3582	8.9	21.74
2008–09	726	3909	1020	3963	2982	9.6	10.86
2009–10	781	3808	531	3188	2955	7.9	14.80
2010–11	736	4081	292	4356	3480	10.6	25.00
2011–12	705	3444	374	3054	1868	7.0	43.43
2012–13	881	3349	192	3269	2288	6.3	39.56
2013–14	864	2605	312	3162	2310	6.3	37.39
2014–15	971	3099	424	4118	2331	6.6	45.88
2015–16	977	3961	166	4801	3034	8.0	29.63
2016–17	607	3473	285	2244	2595	8.0	37.26
2017–18	635	3024	164	2584	2511	8.0	37.31
2018–19	493	3911	226	1728	1636	6.8	56.31
2019–20	531	3839	126	1793	1565	6.3	76.66
2020–21	828	3871	270	3076	3004	7.3	—
2021–22	512	3177	393	1949	1432	6.6	26.57
Average	687	4175	370	4018	2538	7.5	25.82

*Coyotes per trapper / hunter does not include Wildlife Services harvest.

Statewide coyote harvest trends, Utah 1982–2022.



Coyote trapping harvest statistics by county and ecoregion, Utah 2021–2022.

County	n	Trappers afield	Trap harvest	Traps Set	Trapping days	Set-days	Set-days / coyote	Coyotes / 1000 set-days	Coyotes / trapper
Beaver	5	12	52	157	400	7402	141.8	7.1	4.2
Box Elder	12	30	229	1111	1589	84197	368.2	2.7	7.7
Iron	3	7	209	209	415	8899	42.6	23.5	28.0
Juab	10	25	142	507	389	5513	38.9	25.7	5.7
Millard	11	27	80	211	695	7969	100.2	10.0	2.9
Tooele	13	32	159	594	1320	29135	183.1	5.5	4.9
Great Basin totals	54	134	871	2789	4808	143116	164.5	6.1	6.5
Cache	6	15	162	428	532	38646	239.2	4.2	10.8
Davis	4	10	7	40	221	1071	143.7	7.0	0.8
Morgan	5	12	152	209	389	8642	57.0	17.5	12.2
Piute	1	2	40	50	224	4474	112.5	8.9	16.0
Rich	4	10	80	303	370	38449	483.4	2.1	8.0
Salt Lake	1	2	0	5	17	35	—	0.0	0.0
Sanpete	3	7	12	50	249	1193	96.0	10.4	1.7
Sevier	9	22	50	176	677	6453	129.8	7.7	2.2
Summit	3	7	10	30	116	2685	270.0	3.7	1.3
Utah	11	27	50	485	1233	13819	278.0	3.6	1.8
Wasatch	5	12	5	30	368	997	200.5	5.0	0.4
Weber	1	2	0	15	75	447	—	0.0	0.0
Rocky Mountain totals	53	132	568	1820	4471	116911	206.3	4.8	4.3
Daggett	1	2	0	15	10	60	—	0.0	0.0
Duchesne	10	25	25	196	414	5827	234.4	4.3	1.0
Uintah	11	27	77	440	585	13524	175.5	5.7	2.8
Uintah Basin totals	22	55	102	651	1009	19411	190.5	5.3	1.9
Carbon	3	7	15	104	395	5140	344.7	2.9	2.0
Emery	6	15	30	149	892	8712	292.1	3.4	2.0
Garfield	4	10	2	87	1248	7842	3155.0	0.3	0.3
Grand	2	5	57	246	241	13895	243.0	4.1	11.5
Kane	7	17	62	480	1064	58770	945.7	1.1	3.6
San Juan	7	17	52	199	890	11161	213.8	4.7	3.0
Washington	7	17	154	368	773	15685	101.8	9.8	8.9
Wayne	1	2	37	85	224	7606	204.0	4.9	15.0
Colorado Plateau totals	37	92	409	1718	5727	128812	314.1	3.2	4.5
Unknown	1	2	0	5	17	35	—	0.0	0.0
Statewide totals*	138	343	1949	6982	16033	408285	209.5	4.8	5.7

*Statewide totals for sample size and trappers afield are not totals of the columns because trappers trapped multiple counties.

Coyote hunting harvest statistics by county and ecoregion, Utah 2021–2022.

County	n	Hunters afield	Hunt harvest	Hunter-days afield	Hunter-days / coyote	Coyotes / hunter
Beaver	5	12	22	147	6.6	1.8
Box Elder	16	40	179	246	1.4	4.5
Iron	1	2	2	12	5.0	1.0
Juab	10	25	32	107	3.3	1.3
Millard	5	12	5	55	11.0	0.4
Tooele	13	32	209	243	1.2	6.5
Great Basin totals	50	124	450	810	1.8	3.6
Cache	7	17	99	231	2.3	5.7
Davis	1	2	0	5	—	0.0
Morgan	3	7	30	85	2.8	4.0
Piute	2	5	15	42	2.8	3.0
Rich	7	17	104	147	1.4	6.0
Salt Lake	0	0	—	—	—	—
Sanpete	5	12	12	355	28.6	1.0
Sevier	1	2	10	0	0.0	4.0
Summit	2	5	30	99	3.3	6.0
Utah	9	22	30	139	4.7	1.3
Wasatch	2	5	0	30	—	0.0
Weber	3	7	10	107	10.8	1.3
Rocky Mountain totals	42	104	341	1240	3.6	3.3
Daggett	4	10	35	85	2.4	3.5
Duchesne	7	17	17	132	7.6	1.0
Uintah	5	12	17	87	5.0	1.4
Uintah Basin totals	16	40	70	303	4.4	1.8
Carbon	2	5	15	50	3.3	3.0
Emery	2	5	40	67	1.7	8.0
Garfield	6	15	92	365	4.0	6.2
Grand	3	7	27	45	1.6	3.7
Kane	5	12	30	117	3.9	2.4
San Juan	7	17	109	805	7.4	6.3
Washington	3	7	12	57	4.6	1.7
Wayne	1	2	5	20	4.0	2.0
Colorado Plateau totals	29	72	331	1526	4.6	4.6
Unknown	4	10	241	77	0.3	24.3
Statewide totals*	95	236	1432	3957	2.8	6.1

*Statewide totals for sample size and hunters afield are not totals of the columns because hunters hunted multiple counties.

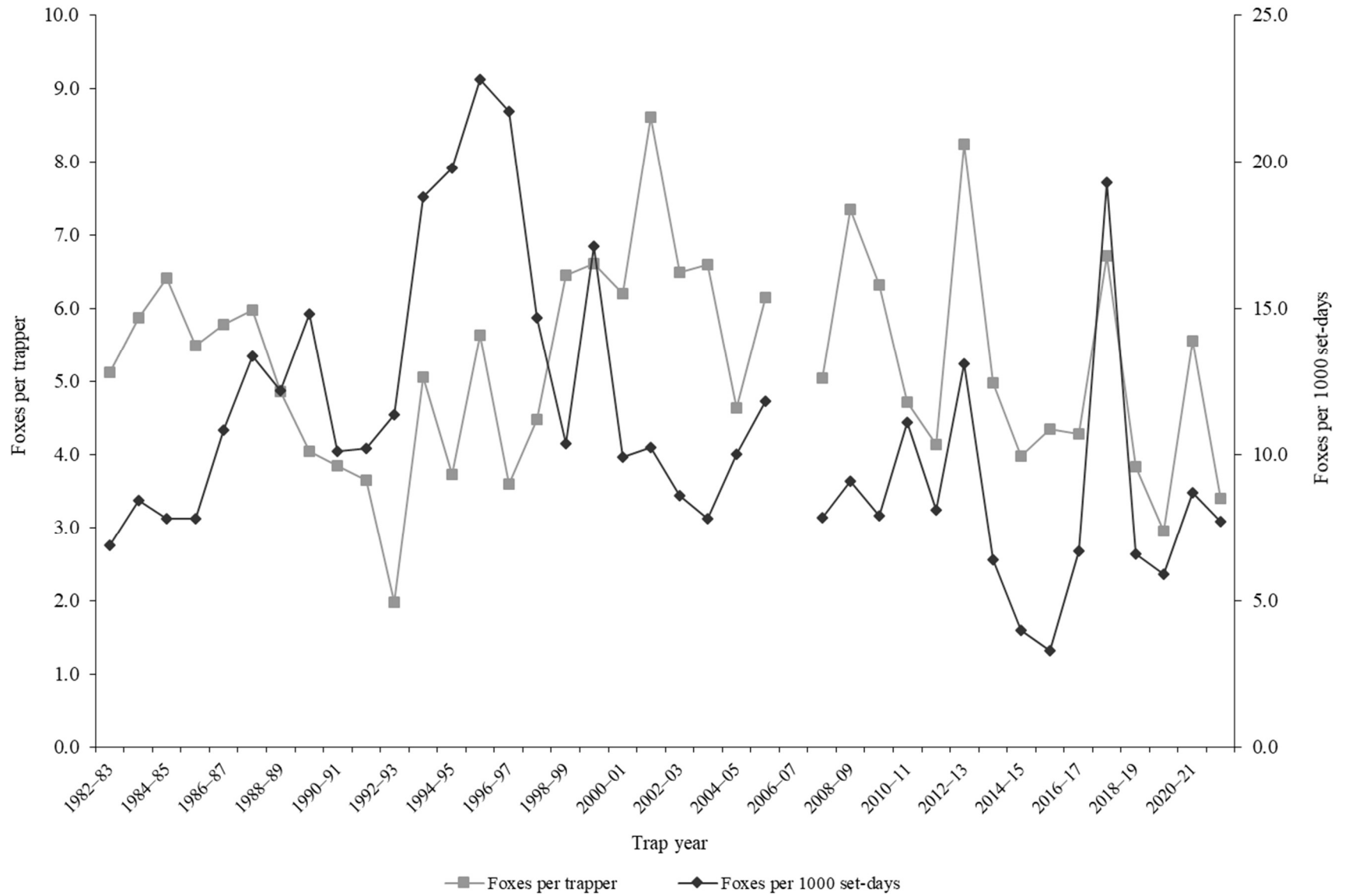
GRAY FOX

Statewide gray fox harvest statistics*, Utah 1982–2022.

Trap year	Trappers afield	Incidental harvest	Trap harvest	Hunt harvest	Set-days / fox	Foxes / 1000 set-days	Foxes / trapper	Pelt price (\$)
1982–83	263	—	1346	—	145	6.9	5.1	27.75
1983–84	233	—	1367	—	119	8.4	5.9	25.13
1984–85	305	—	1954	—	128	7.8	6.4	24.64
1985–86	256	—	1407	—	128	7.8	5.5	15.03
1986–87	252	—	1457	—	92	10.8	5.8	25.29
1987–88	273	—	1633	—	75	13.4	6.0	21.91
1988–89	226	—	1099	—	82	12.2	4.9	13.50
1989–90	233	—	941	—	68	14.8	4.0	6.19
1990–91	65	—	250	—	99	10.1	3.8	8.24
1991–92	110	—	402	—	98	10.2	3.7	6.87
1992–93	214	—	422	—	88	11.4	2.0	7.08
1993–94	136	—	687	—	53	18.8	5.1	12.00
1994–95	207	—	771	—	51	19.8	3.7	9.62
1995–96	147	—	828	—	44	22.8	5.6	10.65
1996–97	102	—	367	—	46	21.7	3.6	11.60
1997–98	87	—	389	—	68	14.7	4.5	7.76
1998–99	135	—	870	—	96	10.4	6.4	6.96
1999–00	140	—	925	—	58	17.1	6.6	6.62
2000–01	187	—	1159	—	101	9.9	6.2	8.00
2001–02	154	—	1326	—	98	10.2	8.6	11.58
2002–03	299	—	1942	—	116	8.6	6.5	12.47
2003–04	265	—	1749	—	128	7.8	6.6	10.84
2004–05	203	—	942	—	100	10.0	4.6	13.81
2005–06	98	—	603	—	85	11.8	6.2	24.15
2006–07	252	—	—	—	—	—	—	37.25
2007–08	217	—	1093	—	127	7.9	5.0	39.19
2008–09	238	—	1747	—	110	9.1	7.3	17.07
2009–10	163	361	1031	—	126	7.9	6.3	16.56
2010–11	138	292	651	—	90	11.1	4.7	20.97
2011–12	125	485	474	43	124	8.1	4.1	23.13
2012–13	130	216	1069	3	77	13.1	8.2	31.15
2013–14	172	462	843	13	155	6.4	5.0	24.18
2014–15	123	525	490	0	249	4.0	4.0	16.16
2015–16	151	450	623	33	299	3.3	4.3	10.75
2016–17	84	267	356	3	150	6.7	4.3	15.42
2017–18	101	389	664	14	52	19.3	6.7	8.98
2018–19	89	328	330	11	151	6.6	3.8	12.36
2019–20	56	264	163	2	171	5.9	2.9	16.22
2020–21	65	394	358	3	115	8.7	5.6	—
2021–22	57	296	186	12	130	7.7	3.4	15.27
Average	169	364	895	12	110	10.8	5.2	16.21

*Trappers and foxes per trapper include hunters and their harvest. Set-days per fox and foxes per 1000 set-days are based only on trapping activity, and do not include hunt harvest or hunter-days afield.

Statewide gray fox harvest trends, Utah 1982–2022.



Gray fox trapping harvest statistics by county and ecoregion, Utah 2021–2022.

County	n	Trappers afield	Trap harvest	Traps set	Trapping days	Set-days	Set-days / fox	Foxes / 1000 set-days	Foxes / trapper
Beaver	1	2	5	0	0	0	0.0	—	2.0
Box Elder	0	0	—	—	—	—	—	—	—
Iron	0	0	—	—	—	—	—	—	—
Juab	0	0	—	—	—	—	—	—	—
Millard	0	0	—	—	—	—	—	—	—
Tooele	0	0	—	—	—	—	—	—	—
Great Basin totals	1	2	5	0	0	0	0.0	—	2.0
Cache	0	0	—	—	—	—	—	—	—
Davis	0	0	—	—	—	—	—	—	—
Morgan	0	0	—	—	—	—	—	—	—
Piute	1	2	7	50	224	4474	600.0	1.7	3.0
Rich	0	0	—	—	—	—	—	—	—
Salt Lake	0	0	—	—	—	—	—	—	—
Sanpete	0	0	—	—	—	—	—	—	—
Sevier	1	2	5	25	25	249	50.0	20.0	2.0
Summit	0	0	—	—	—	—	—	—	—
Utah	0	0	—	—	—	—	—	—	—
Wasatch	0	0	—	—	—	—	—	—	—
Weber	0	0	—	—	—	—	—	—	—
Rocky Mountain totals	2	5	12	75	249	4723	380.0	2.6	2.5
Daggett	0	0	—	—	—	—	—	—	—
Duchesne	1	2	2	37	2	37	15.0	66.7	1.0
Uintah	1	2	10	30	75	895	90.0	11.1	4.0
Uintah Basin totals	2	5	12	67	77	932	75.0	13.3	2.5
Carbon	0	0	—	—	—	—	—	—	—
Emery	2	5	0	55	298	3430	—	0.0	0.0
Garfield	2	5	12	55	104	1148	92.4	10.8	2.5
Grand	0	0	—	—	—	—	—	—	—
Kane	3	7	20	70	316	2456	123.5	8.1	2.7
San Juan	4	10	40	75	301	2008	50.5	19.8	4.0
Washington	6	15	82	149	547	9394	114.5	8.7	5.5
Wayne	1	2	2	10	37	149	60.0	16.7	1.0
Colorado Plateau totals	18	45	156	413	1603	18586	118.7	8.4	3.5
Unknown	0	0	—	—	—	—	—	—	—
Statewide totals*	22	55	186	554	1929	24241	130.0	7.7	3.4

*Statewide totals for sample size and trappers afield are not totals of the columns because trappers trapped multiple counties.

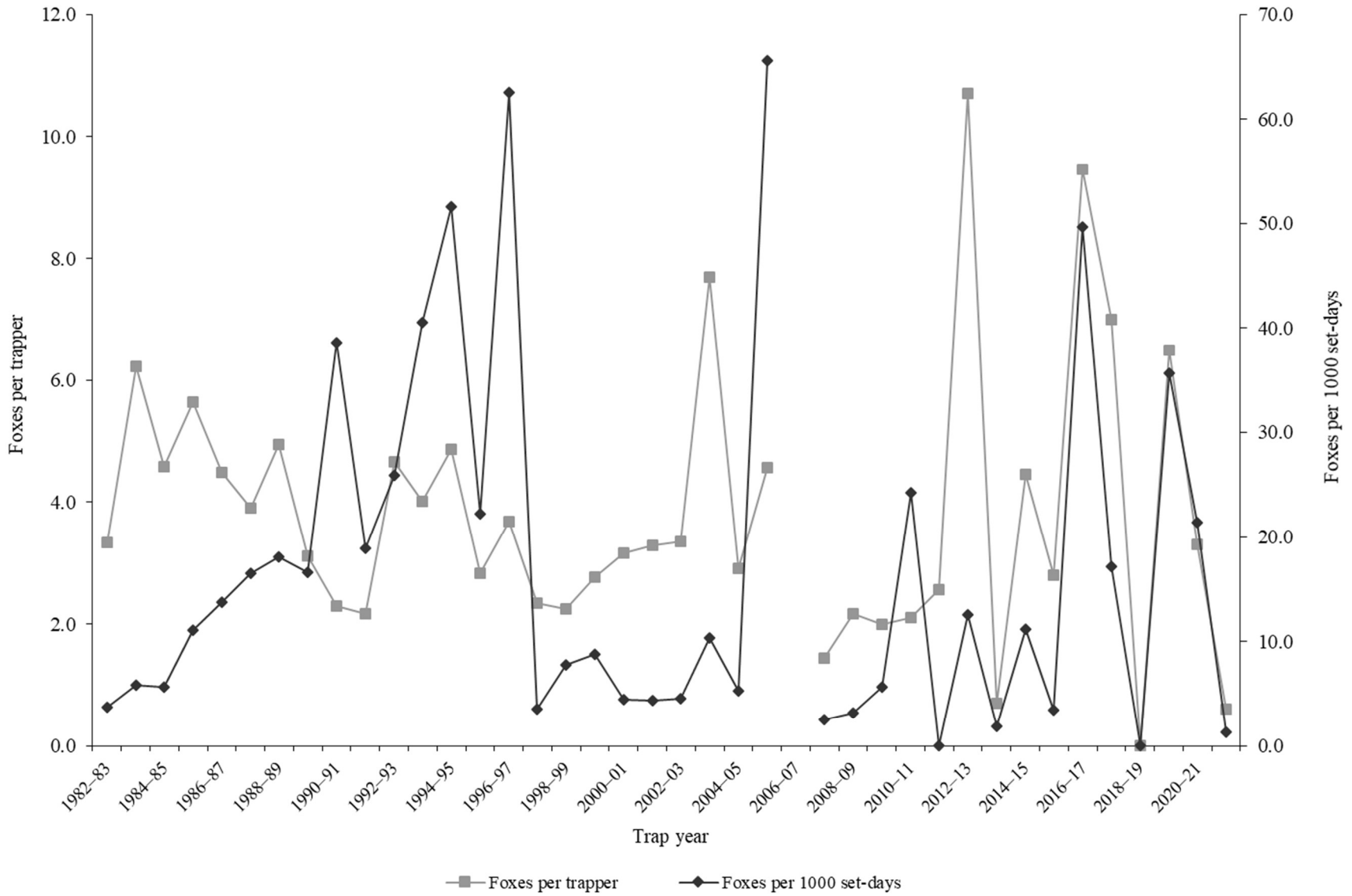
KIT FOX

Statewide kit fox harvest statistics*, Utah 1982–2022.

Trap year	Trappers afield	Incidental harvest	Trap harvest	Hunt harvest	Set-days / fox	Foxes / 1000 set-days	Foxes / trapper	Pelt price (\$)
1982–83	109	—	363	—	267	3.7	3.3	11.39
1983–84	112	—	698	—	171	5.8	6.2	11.99
1984–85	142	—	651	—	178	5.6	4.6	11.17
1985–86	108	—	609	—	90	11.1	5.6	7.50
1986–87	122	—	547	—	73	13.7	4.5	9.90
1987–88	138	—	538	—	61	16.5	3.9	10.69
1988–89	130	—	643	—	55	18.1	4.9	6.98
1989–90	117	—	365	—	60	16.6	3.1	3.19
1990–91	81	—	186	—	26	38.6	2.3	4.67
1991–92	86	—	187	—	53	18.9	2.2	2.78
1992–93	41	—	191	—	39	25.9	4.7	4.30
1993–94	75	—	301	—	25	40.6	4.0	4.69
1994–95	109	—	531	—	19	51.6	4.9	6.45
1995–96	77	—	218	—	45	22.2	2.8	6.25
1996–97	44	—	162	—	16	62.5	3.7	6.77
1997–98	41	—	96	—	282	3.5	2.3	3.50
1998–99	75	—	168	—	128	7.8	2.2	7.31
1999–00	66	—	183	—	114	8.8	2.8	2.90
2000–01	51	—	161	—	227	4.4	3.2	6.13
2001–02	52	—	171	—	229	4.4	3.3	10.72
2002–03	90	—	302	—	221	4.5	3.4	5.44
2003–04	83	—	638	—	97	10.4	7.7	5.38
2004–05	89	—	259	—	191	5.2	2.9	8.98
2005–06	40	—	183	—	15	65.6	4.6	10.92
2006–07	65	—	—	—	—	—	—	10.50
2007–08	27	—	39	—	392	2.6	1.4	7.87
2008–09	48	—	104	—	314	3.2	2.2	7.61
2009–10	19	13	38	—	177	5.6	2.0	9.47
2010–11	20	3	42	—	41	24.2	2.1	12.68
2011–12	18	64	0	46	—	0.0	2.6	14.49
2012–13	31	41	315	17	80	12.6	10.7	14.37
2013–14	10	7	7	0	515	1.9	0.7	14.32
2014–15	22	47	95	3	90	11.2	4.5	7.13
2015–16	29	18	37	44	296	3.4	2.8	6.54
2016–17	13	31	123	0	20	49.7	9.5	10.32
2017–18	2	30	14	0	58	17.2	7.0	6.60
2018–19	7	13	0	0	—	0.0	0.0	8.91
2019–20	12	25	74	4	28	35.7	6.5	15.15
2020–21	3	52	10	0	47	21.4	3.3	—
2021–22	17	7	7	7	792	1.3	0.6	—
Average	61	27	237	11	149	16.8	3.8	8.31

*Trappers and foxes per trapper include hunters and their harvest. Set-days per fox and foxes per 1000 set-days are based only on trapping activity, and do not include hunt harvest or hunter-days afield.

Statewide kit fox harvest trends, Utah 1982–2022.



MARTEN

Statewide marten harvest statistics, Utah 1982–1999.

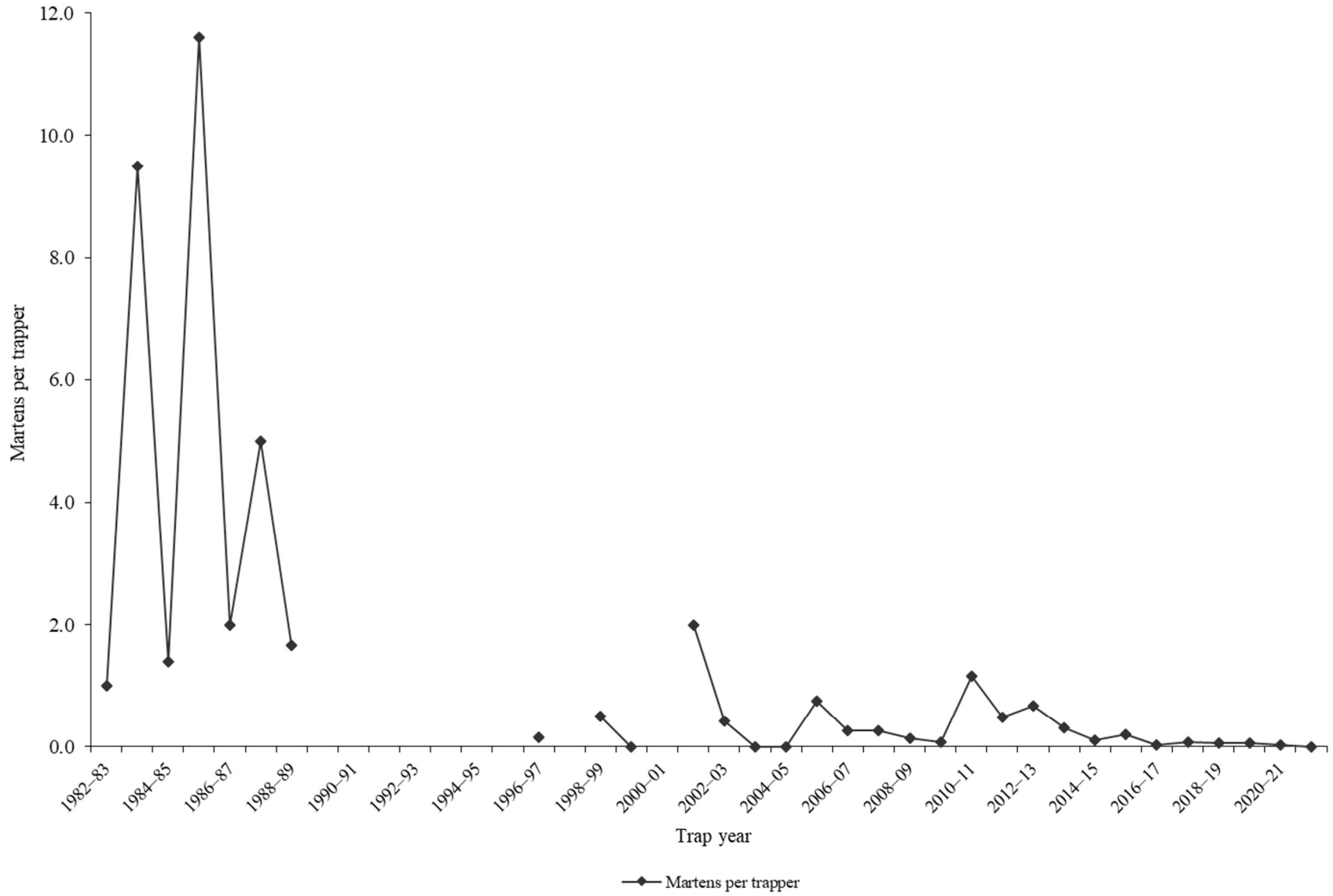
Trap year	Trappers afield	Trap / hunt harvest	Set-days	Set-days / marten	Martens / 1000 set-days	Martens / trapper	Pelt price (\$)
1982–83	1	1	6	6	166.7	1.0	10.00
1983–84	9	84	4704	56	17.9	9.5	20.00
1984–85	9	12	6516	543	1.8	1.4	24.00
1985–86	10	121	7381	61	16.4	11.6	23.00
1986–87	11	22	8558	389	2.6	2.0	25.68
1987–88	10	50	9750	195	5.1	5.0	40.00
1988–89	6	10	1210	121	8.3	1.7	31.00
1989–90	—	—	—	—	—	—	—
1990–91	—	—	—	—	—	—	—
1991–92	—	—	—	—	—	—	—
1992–93	—	—	—	—	—	—	—
1993–94	—	—	—	—	—	—	—
1994–95	—	—	—	—	—	—	—
1995–96	—	—	—	—	—	—	—
1996–97	13	2	—	—	—	0.2	20.00
1997–98	—	—	—	—	—	—	11.00
1998–99	12	6	1228	205	4.9	0.5	7.11
Average	9	34	4919	197	28.0	3.6	21.18

Statewide marten harvest statistics, Utah 1999–2022.

Trap year	Permits sold	Successful trappers	Male harvest	Female harvest	Unknown harvest	Total harvest	Success rate (%)*	Martens / trapper*
1999–00	5	0	0	0	0	0	0.0	0.0
2000–01	—	1	3	3	0	6	—	—
2001–02	11	2	16	6	0	22	18.2	2.0
2002–03	12	1	3	2	0	5	8.3	0.4
2003–04	18	0	0	0	0	0	0.0	0.0
2004–05	12	0	0	0	0	0	0.0	0.0
2005–06	16	2	7	4	1	12	12.5	0.8
2006–07	26	3	6	1	0	7	11.5	0.3
2007–08	22	4	7	14	0	21	18.2	1.0
2008–09	28	1	2	2	0	4	3.6	0.1
2009–10	25	1	2	0	0	2	4.0	0.1
2010–11	31	2	24	12	0	36	6.5	1.2
2011–12	29	3	7	3	4	14	10.3	0.5
2012–13	39	3	15	5	6	26	7.7	0.7
2013–14	51	6	13	3	0	16	11.8	0.3
2014–15	202	2	16	6	0	22	1.0	0.1
2015–16	46	1	5	4	0	9	2.2	0.2
2016–17	89	2	2	0	0	2	2.2	0.0
2017–18	184	3	11	4	0	15	1.6	0.1
2018–19	188	1	9	2	0	11	0.5	0.1
2019–20	152	1	4	4	0	8	0.7	0.1
2020–21	179	2	3	1	0	4	1.1	0.0
2021–22	152	0	0	0	0	0	0.0	0.0
Average	69	2	7	3	0	11	5.5	0.4

*Assumption: Every person who possessed a marten permit trapped or hunted.

Statewide marten harvest trends, Utah 1982–2022.



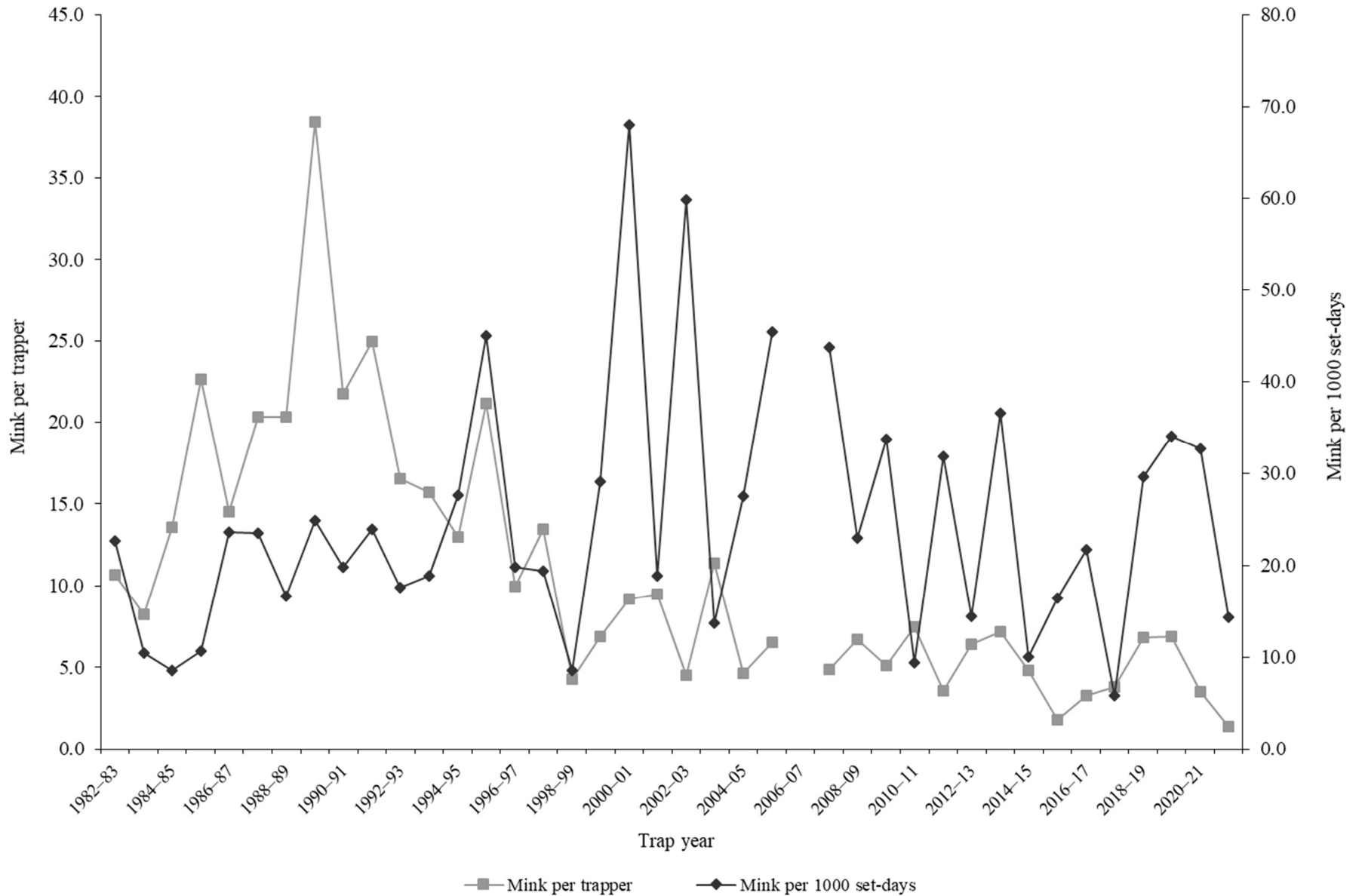
MINK

Statewide mink harvest statistics*, Utah 1982–2022.

Trap year	Trappers afield	Incidental harvest	Trap harvest	Hunt harvest	Set-days / mink	Minks / 1000 set-days	Minks / trapper	Pelt price (\$)
1982–83	38	—	405	—	44	22.7	10.7	10.85
1983–84	46	—	379	—	95	10.5	8.2	9.13
1984–85	40	—	542	—	117	8.6	13.6	10.27
1985–86	37	—	837	—	94	10.7	22.6	6.00
1986–87	57	—	828	—	42	23.6	14.5	10.63
1987–88	51	—	1037	—	42	23.6	20.3	12.25
1988–89	42	—	854	—	60	16.6	20.3	10.69
1989–90	29	—	1114	—	40	24.8	38.4	6.30
1990–91	25	—	543	—	50	19.8	21.7	6.33
1991–92	29	—	723	—	42	23.9	24.9	6.81
1992–93	23	—	380	—	57	17.6	16.5	7.50
1993–94	30	—	472	—	53	18.9	15.7	8.41
1994–95	27	—	350	—	36	27.6	13.0	8.38
1995–96	25	—	529	—	22	45.0	21.2	10.40
1996–97	27	—	269	—	50	19.8	10.0	10.95
1997–98	25	—	337	—	51	19.4	13.5	5.81
1998–99	81	—	345	—	116	8.6	4.3	7.11
1999–00	61	—	419	—	34	29.1	6.9	6.07
2000–01	51	—	468	—	15	68.1	9.2	4.92
2001–02	30	—	284	—	53	18.8	9.5	5.20
2002–03	59	—	268	—	17	59.8	4.5	2.07
2003–04	59	—	673	—	73	13.7	11.4	8.00
2004–05	68	—	317	—	36	27.5	4.7	8.98
2005–06	34	—	222	—	22	45.4	6.5	9.97
2006–07	65	—	—	—	—	—	—	7.94
2007–08	38	—	186	—	23	43.7	4.9	9.33
2008–09	36	—	242	—	44	22.9	6.7	5.96
2009–10	66	57	338	—	30	33.7	5.1	8.00
2010–11	65	151	485	—	107	9.4	7.5	11.27
2011–12	43	61	153	7	31	31.8	3.6	15.08
2012–13	110	147	706	14	70	14.4	6.4	19.18
2013–14	115	186	826	0	27	36.6	7.2	16.21
2014–15	54	82	259	0	100	10.0	4.8	8.57
2015–16	74	55	133	0	61	16.4	1.8	4.22
2016–17	60	29	196	21	46	21.7	3.3	7.52
2017–18	59	47	225	0	173	5.8	3.8	3.00
2018–19	33	20	219	7	34	29.6	6.8	2.00
2019–20	47	37	324	0	29	34.0	6.9	0.94
2020–21	26	36	91	0	31	32.7	3.5	—
2021–22	25	89	32	0	70	14.3	1.4	2.00
Average	48	77	436	4	55	24.6	10.7	8.06

*Trappers and minks per trapper include hunters and their harvest. Set-days per mink and minks per 1000 set-days are based only on trapping activity, and do not include hunt harvest or hunter-days afield.

Statewide mink harvest trends, Utah 1982–2022.



*Statewide totals for sample size and trappers afield are not totals of the columns because trappers trapped multiple counties.

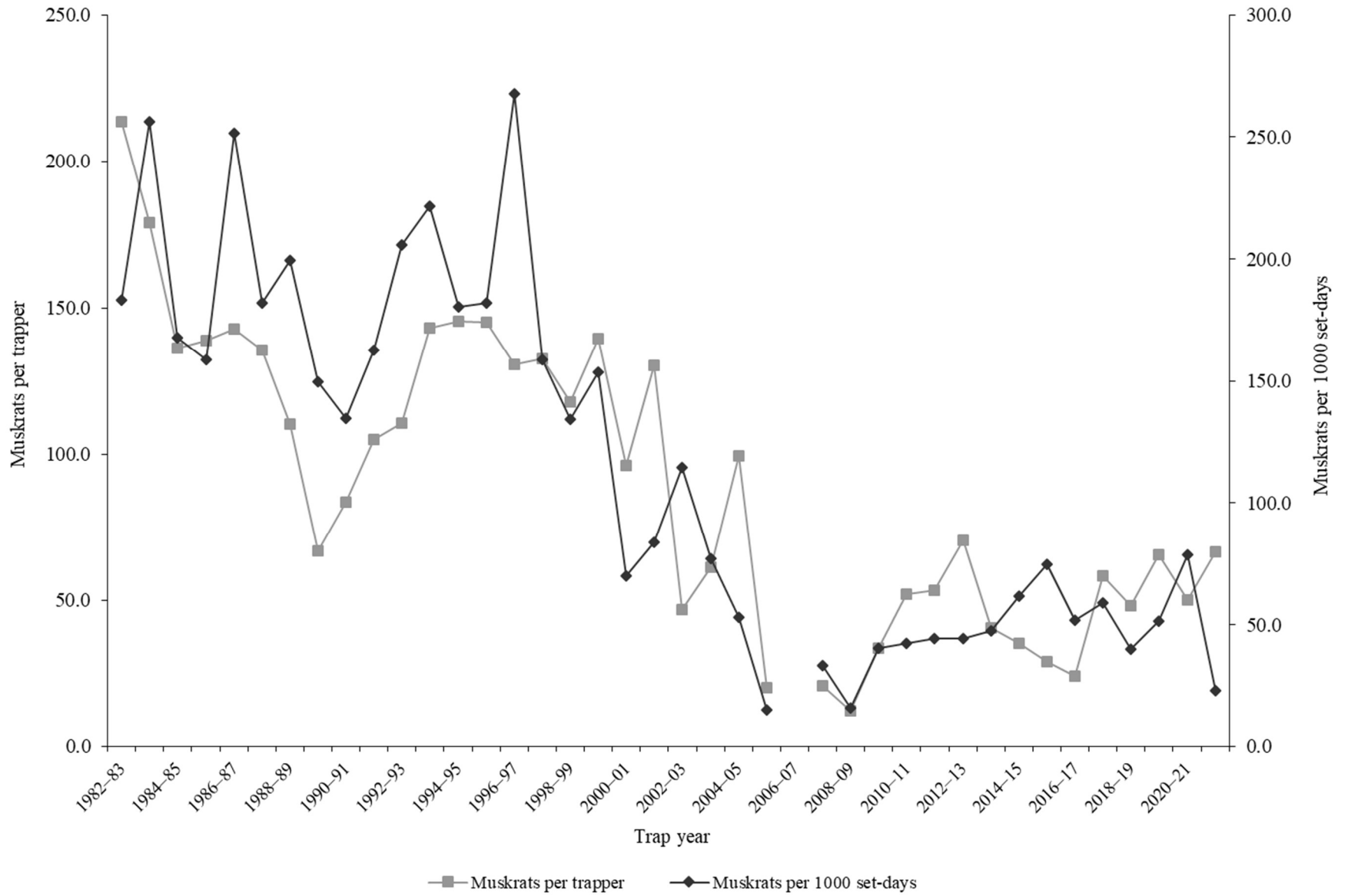
MUSKRAT

Statewide muskrat harvest statistics*, Utah 1982–2022.

Trap year	Trappers afield	Incidental harvest	Trap harvest	Hunt harvest	Set-days / muskrat	Musk rats / 1000 set-days	Musk rats / trapper	Pelt price (\$)
1982–83	258	—	55137	—	5	183.1	213.7	2.16
1983–84	309	—	55298	—	4	256.2	179.0	2.46
1984–85	400	—	54526	—	6	168.1	136.3	2.45
1985–86	282	—	39195	—	6	158.9	139.0	1.86
1986–87	416	—	59368	—	4	251.7	142.7	2.66
1987–88	432	—	58560	—	5	182.2	135.6	2.46
1988–89	303	—	33400	—	5	199.4	110.2	1.40
1989–90	253	—	16898	—	7	149.6	66.8	0.89
1990–91	85	—	7102	—	7	134.6	83.6	0.91
1991–92	186	—	19547	—	6	162.7	105.1	1.60
1992–93	105	—	11623	—	5	205.9	110.7	1.18
1993–94	157	—	22488	—	5	221.5	143.2	1.89
1994–95	195	—	28369	—	6	180.5	145.5	1.74
1995–96	181	—	26260	—	5	182.2	145.1	2.09
1996–97	179	—	23371	—	4	267.9	130.6	3.59
1997–98	203	—	26907	—	6	158.7	132.5	2.01
1998–99	186	—	21895	—	7	134.1	117.7	1.73
1999–00	151	—	21086	—	7	153.7	139.6	1.00
2000–01	108	—	10376	—	14	69.8	96.1	1.58
2001–02	115	—	14979	—	12	84.0	130.3	2.60
2002–03	135	—	6334	—	9	114.6	46.9	1.59
2003–04	176	—	10777	—	13	77.0	61.2	1.57
2004–05	151	—	15016	—	19	53.1	99.4	1.57
2005–06	41	0	824	—	66	15.3	20.1	3.97
2006–07	81	—	—	—	—	—	—	3.31
2007–08	80	110	1665	—	30	33.3	20.9	3.04
2008–09	98	137	1198	—	63	15.9	12.2	2.49
2009–10	158	164	5341	—	25	40.5	33.8	4.93
2010–11	141	337	7361	—	24	42.2	52.2	5.40
2011–12	150	281	7985	—	23	44.4	53.2	7.28
2012–13	192	117	13534	3	23	44.2	70.5	8.11
2013–14	213	159	8605	0	21	47.5	40.4	8.73
2014–15	168	180	5902	9	16	61.8	35.1	3.76
2015–16	210	41	6130	4	13	74.9	29.2	1.89
2016–17	128	92	3069	3	19	51.8	24.0	3.78
2017–18	122	110	7131	24	17	58.8	58.5	2.91
2018–19	72	24	3465	2	25	39.9	48.2	3.15
2019–20	74	153	4837	2	19	51.5	65.4	3.26
2020–21	98	65	4897	0	13	78.5	50.0	—
2021–22	85	333	5449	5	44	22.9	66.4	3.07
Average	177	144	18613	5	16	114.7	89.5	2.87

*Trappers and muskrat per trapper include hunters and their harvest. Set-days per muskrat and muskrat per 1000 set-days are based only on trapping activity, and do not include hunt harvest or hunter-days afield.

Statewide muskrat harvest trends, Utah 1982–2022.



Muskrat harvest statistics by county and ecoregion, Utah 2021–2022.

County	n	Trappers afield	Trap harvest	Traps set	Trapping days	Set-days	Set-days / muskrat	Musk rats / 1000 set-days	Musk rats / trapper
Beaver	0	0	—	—	—	—	—	—	—
Box Elder	5	12	942	669	281	20887	22.2	45.1	75.8
Iron	0	0	—	—	—	—	—	—	—
Juab	1	2	60	30	50	597	10.0	100.0	24.0
Millard	0	0	—	—	—	—	—	—	—
Tooele	0	0	—	—	—	—	—	—	—
Great Basin totals	6	15	1002	698	331	21484	21.4	46.6	67.2
Cache	6	15	694	306	408	8906	12.8	77.9	46.5
Davis	3	7	1258	584	455	58104	46.2	21.6	168.7
Morgan	3	7	597	549	333	55158	92.5	10.8	80.0
Piute	0	0	—	—	—	—	—	—	—
Rich	1	2	20	12	37	186	9.4	106.7	8.0
Salt Lake	2	5	261	502	291	54721	209.7	4.8	52.5
Sanpete	1	2	15	7	20	60	4.0	250.0	6.0
Sevier	0	0	—	—	—	—	—	—	—
Summit	2	5	30	22	52	226	7.6	131.9	6.0
Utah	9	22	234	186	343	3418	14.6	68.4	10.4
Wasatch	0	0	—	—	—	—	—	—	—
Weber	3	7	1263	370	433	34189	27.1	36.9	169.3
Rocky Mountain totals	30	75	4372	2540	2371	214967	49.2	20.3	58.6
Daggett	1	2	5	12	17	87	17.5	57.1	2.0
Duchesne	0	0	—	—	—	—	—	—	—
Uintah	0	0	—	—	—	—	—	—	—
Uintah Basin totals	1	2	5	12	17	87	17.5	57.1	2.0
Carbon	1	2	42	60	35	835	19.8	50.6	17.0
Emery	0	0	—	—	—	—	—	—	—
Garfield	0	0	—	—	—	—	—	—	—
Grand	1	2	30	12	35	174	5.8	171.4	12.0
Kane	0	0	—	—	—	—	—	—	—
San Juan	0	0	—	—	—	—	—	—	—
Washington	0	0	—	—	—	—	—	—	—
Wayne	0	0	—	—	—	—	—	—	—
Colorado Plateau totals	2	5	72	72	70	1009	14.0	71.4	14.5
Unknown	0	0	—	—	—	—	—	—	—
Statewide totals*	33	82	5449	3323	2789	237547	43.6	22.9	66.4

*Statewide totals for sample size and trappers afield are not totals of the columns because trappers trapped multiple counties.

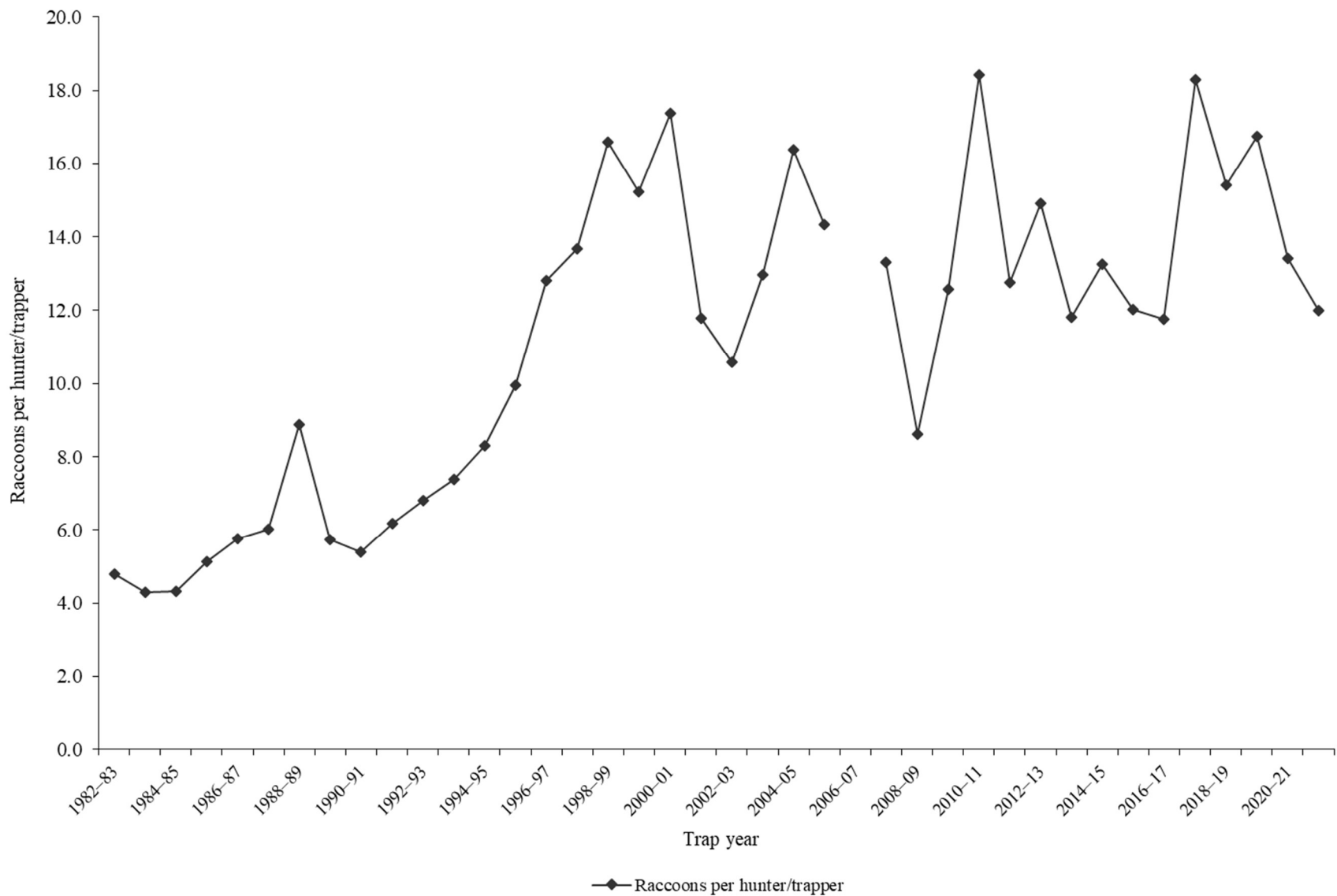
RACCOON

Statewide raccoon harvest statistics*, Utah 1982–2022.

Trap year	Trappers afield	Incidental harvest	Trap harvest	Hunt harvest	Set-days / raccoon	Raccoons / 1000 set-days	Raccoons / trapper	Pelt price (\$)
1982–83	178	—	853	—	19	51.3	4.8	12.34
1983–84	192	—	822	—	40	25.0	4.3	13.51
1984–85	329	—	1417	—	47	21.2	4.3	12.85
1985–86	290	—	1485	—	49	20.5	5.1	9.26
1986–87	418	—	2412	—	39	25.5	5.8	12.62
1987–88	434	—	2619	—	41	24.3	6.0	9.41
1988–89	350	—	3104	—	14	71.9	8.9	7.71
1989–90	430	—	2464	—	17	58.8	5.7	5.78
1990–91	214	—	1156	—	18	54.3	5.4	4.65
1991–92	368	—	2273	—	20	50.3	6.2	4.72
1992–93	272	—	1851	—	17	59.5	6.8	2.57
1993–94	306	—	2259	—	19	53.4	7.4	6.98
1994–95	364	—	3025	—	23	43.8	8.3	6.06
1995–96	293	—	2914	—	10	100.1	9.9	8.07
1996–97	330	—	4228	—	13	77.2	12.8	13.35
1997–98	365	—	4989	—	29	34.5	13.7	9.98
1998–99	468	—	7765	—	22	45.5	16.6	4.95
1999–00	349	—	5317	—	34	29.8	15.2	5.67
2000–01	327	—	5678	—	29	34.8	17.4	5.16
2001–02	321	—	3785	—	32	31.2	11.8	8.04
2002–03	378	—	4001	—	26	38.4	10.6	5.62
2003–04	434	—	5634	—	37	26.8	13.0	10.63
2004–05	391	—	6405	—	35	28.4	16.4	6.54
2005–06	230	—	1761	1537	246	4.1	14.3	9.83
2006–07	325	—	—	—	—	—	—	7.18
2007–08	300	—	2414	1576	50	19.8	13.3	10.85
2008–09	275	—	1639	729	58	17.4	8.6	6.21
2009–10	349	633	3439	946	39	25.9	12.6	7.09
2010–11	292	571	3958	1417	28	36.0	18.4	8.17
2011–12	289	453	3168	520	34	29.6	12.8	7.77
2012–13	377	614	4048	1577	35	28.4	14.9	14.08
2013–14	374	1066	4031	385	48	21.0	11.8	9.50
2014–15	354	743	4046	648	49	20.4	13.3	5.46
2015–16	343	627	3631	490	44	22.7	12.0	4.10
2016–17	264	523	2734	371	55	18.2	11.8	4.92
2017–18	258	601	3539	1181	29	34.8	18.3	3.92
2018–19	141	486	1798	376	48	21.0	15.4	6.49
2019–20	217	376	2979	652	27	37.6	16.7	6.55
2020–21	283	671	2858	935	118	8.5	13.4	—
2021–22	236	594	2450	373	38	26.2	12.0	3.75
Average	318	612	3204	857	40	35.3	11.2	7.75

*Trappers and raccoons per trapper include hunters and their harvest. Set-days per raccoon and raccoons per 1000 set-days are based only on trapping activity, and do not include hunt harvest or hunter-days afield.

Statewide raccoon harvest trends, Utah 1982–2022.



Raccoon trapping harvest statistics by county and ecoregion, Utah 2021–2022.

County	n	Trappers afield	Trap harvest	Traps set	Trapping days	Set-days	Set-days / raccoon	Raccoons / 1000 set-days	Raccoons / trapper
Beaver	2	5	47	45	224	2013	42.6	23.5	9.5
Box Elder	10	25	331	321	848	17017	51.5	19.4	13.3
Iron	0	0	—	—	—	—	—	—	—
Juab	1	2	30	27	35	383	12.8	77.9	12.0
Millard	3	7	32	67	164	2130	65.9	15.2	4.3
Tooele	4	10	17	50	557	1909	109.7	9.1	1.8
Great Basin totals	20	50	457	510	1827	23453	51.3	19.5	9.2
Cache	14	35	276	256	1198	12215	44.3	22.6	7.9
Davis	3	7	206	149	333	7233	35.1	28.5	27.7
Morgan	2	5	75	65	159	3043	40.8	24.5	15.0
Piute	1	2	50	25	75	746	15.0	66.7	20.0
Rich	1	2	12	15	25	149	12.0	83.3	5.0
Salt Lake	2	5	37	40	167	2255	60.5	16.5	7.5
Sanpete	2	5	87	25	184	920	10.6	94.6	17.5
Sevier	3	7	99	22	104	313	3.2	317.5	13.3
Summit	3	7	40	30	134	537	13.5	74.1	5.3
Utah	15	37	360	323	1178	10992	30.6	32.7	9.6
Wasatch	1	2	7	7	5	15	2.0	500.0	3.0
Weber	7	17	259	159	502	9911	38.3	26.1	14.9
Rocky Mountain totals	54	134	1508	1116	4064	48327	32.0	31.2	11.2
Daggett	0	0	—	—	—	—	—	—	—
Duchesne	3	7	204	57	1357	5916	29.0	34.5	27.3
Uintah	3	7	25	132	311	6657	267.8	3.7	3.3
Uintah Basin totals	6	15	229	189	1668	12573	55.0	18.2	15.3
Carbon	1	2	2	5	7	15	6.0	166.7	1.0
Emery	3	7	60	62	414	5738	96.2	10.4	8.0
Garfield	3	7	37	12	331	363	9.7	102.7	5.0
Grand	1	2	40	20	149	1193	30.0	33.3	16.0
Kane	0	0	—	—	—	—	—	—	—
San Juan	1	2	72	15	298	1790	24.8	40.3	29.0
Washington	2	5	45	17	47	157	3.5	285.7	9.0
Wayne	0	0	—	—	—	—	—	—	—
Colorado Plateau totals	11	27	256	132	1247	9256	36.2	27.7	9.4
Unknown	0	0	—	—	—	—	—	—	—
Statewide totals*	82	204	2450	1946	8806	93608	38.2	26.2	12.0

*Statewide totals for sample size and trappers afield are not totals of the columns because trappers trapped multiple counties.

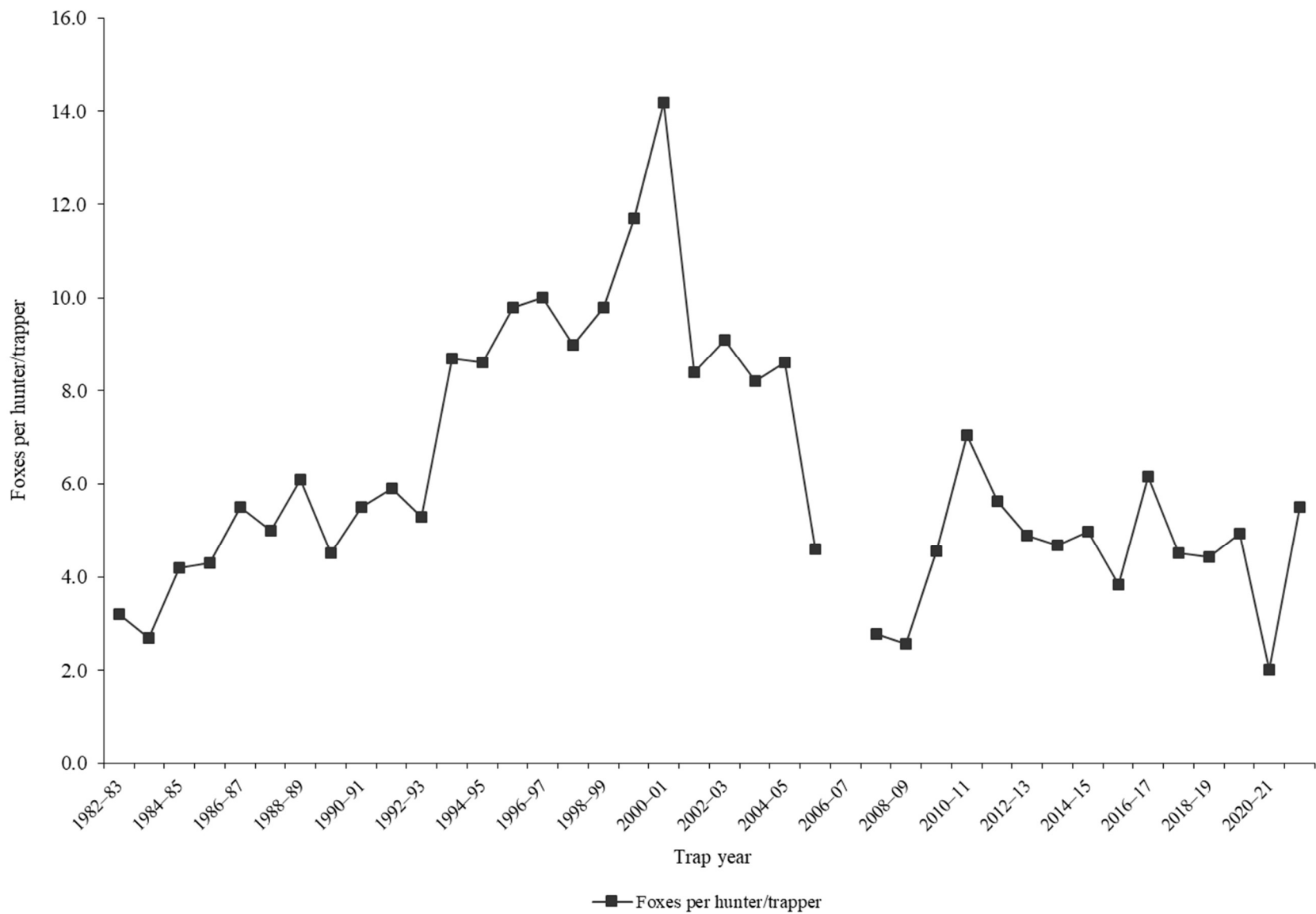
RED FOX

Statewide red fox harvest statistics*, Utah 1982–2022.

Trap year	Trappers afield	Incidental harvest	Trap harvest	Hunt harvest	Set-days / fox	Foxes / 1000 set-days	Foxes / trapper	Pelt price (\$)
1982–83	172	—	544	—	128	7.8	3.2	30.13
1983–84	191	—	523	—	134	7.5	2.7	28.43
1984–85	298	—	1244	—	116	8.7	4.2	25.90
1985–86	316	—	1351	—	74	13.6	4.3	15.83
1986–87	444	—	2446	—	59	17.1	5.5	20.14
1987–88	506	—	2545	—	50	20.2	5.0	13.66
1988–89	398	—	2446	—	34	29.2	6.1	6.57
1989–90	496	—	2250	—	40	25.3	4.5	7.80
1990–91	365	—	1993	—	25	40.0	5.5	6.34
1991–92	623	—	3663	—	28	35.4	5.9	10.70
1992–93	594	—	3126	—	27	37.5	5.3	10.12
1993–94	578	—	5055	—	26	38.9	8.7	14.74
1994–95	509	—	4378	—	36	28.0	8.6	15.34
1995–96	421	—	4115	—	26	38.7	9.8	18.08
1996–97	427	—	4274	—	27	36.8	10.0	17.48
1997–98	414	—	3744	—	32	31.5	9.0	11.31
1998–99	570	—	5600	—	34	29.5	9.8	8.95
1999–00	420	—	4900	—	44	22.7	11.7	14.19
2000–01	375	—	5330	—	52	19.1	14.2	16.92
2001–02	379	—	3192	—	59	16.9	8.4	24.48
2002–03	482	—	4399	—	76	13.1	9.1	28.19
2003–04	568	—	4639	—	71	14.1	8.2	18.07
2004–05	545	—	4674	—	102	9.8	8.6	18.86
2005–06	406	—	1874	—	196	5.1	4.6	24.35
2006–07	496	—	—	—	—	—	—	20.49
2007–08	407	—	1130	—	174	5.7	2.8	21.42
2008–09	339	—	872	—	261	3.8	2.6	17.98
2009–10	461	557	1908	192	102	9.8	4.6	16.32
2010–11	376	216	2435	213	84	12.0	7.0	22.62
2011–12	335	388	1757	128	84	11.9	5.6	42.47
2012–13	380	195	1690	171	83	12.1	4.9	43.50
2013–14	428	519	1934	64	154	6.5	4.7	40.39
2014–15	361	478	1714	79	161	6.2	5.0	24.30
2015–16	361	494	1183	203	180	5.6	3.8	15.37
2016–17	207	351	1175	99	249	4.0	6.2	16.16
2017–18	251	372	1048	84	122	8.2	4.5	14.63
2018–19	165	252	627	102	179	5.6	4.4	15.92
2019–20	192	233	669	277	116	8.6	4.9	18.89
2020–21	222	342	407	39	177	5.7	2.0	—
2021–22	184	529	731	42	107	9.4	5.5	14.26
Average	392	379	2502	130	96	17.0	6.2	19.26

*Trappers and foxes per trapper include hunters and their harvest. Set-days per fox and foxes per 1000 set-days are based only on trapping activity, and do not include hunt harvest or hunter-days afield.

Statewide red fox harvest trends, Utah 1982–2022.



Red fox trapping harvest statistics by county and ecoregion, Utah 2021–2022.

County	n	Trappers afield	Trap harvest	Traps set	Trapping days	Set-days	Set-days / fox	Foxes / 1000 set-days	Foxes / trapper
Beaver	0	0	—	—	—	—	—	—	—
Box Elder	2	5	82	80	261	5071	61.8	16.2	16.5
Iron	0	0	—	—	—	—	—	—	—
Juab	1	2	25	75	75	2237	90.0	11.1	10.0
Millard	4	10	40	47	333	1775	44.6	22.4	4.0
Tooele	3	7	37	35	614	3614	96.9	10.3	5.0
Great Basin totals	10	25	184	236	1283	12697	69.0	14.5	7.4
Cache	3	7	57	326	308	27343	478.3	2.1	7.7
Davis	5	12	77	65	634	3604	46.8	21.4	6.2
Morgan	1	2	50	25	174	1740	35.0	28.6	20.0
Piute	1	2	12	50	224	4474	360.0	2.8	5.0
Rich	2	5	10	30	55	328	33.0	30.3	2.0
Salt Lake	0	0	—	—	—	—	—	—	—
Sanpete	1	2	2	7	75	224	90.0	11.1	1.0
Sevier	3	7	20	22	78	261	13.1	76.2	2.7
Summit	0	0	—	—	—	—	—	—	—
Utah	8	20	92	176	460	5762	62.6	16.0	4.6
Wasatch	0	0	—	—	—	—	—	—	—
Weber	1	2	0	7	75	224	—	0.0	0.0
Rocky Mountain totals	25	62	320	708	2082	43960	137.1	7.3	5.2
Daggett	0	0	—	—	—	—	—	—	—
Duchesne	5	12	42	99	162	1201	28.4	35.2	3.4
Uintah	4	10	52	144	475	7768	148.8	6.7	5.3
Uintah Basin totals	9	22	94	244	636	8968	94.9	10.5	4.2
Carbon	0	0	—	—	—	—	—	—	—
Emery	2	5	5	55	373	4176	840.0	1.2	1.0
Garfield	1	2	12	2	907	907	73.0	13.7	5.0
Grand	2	5	32	109	67	895	27.7	36.1	6.5
Kane	0	0	—	—	—	—	—	—	—
San Juan	4	10	25	47	423	2150	86.5	11.6	2.5
Washington	3	7	12	55	186	1467	118.0	8.5	1.7
Wayne	2	5	45	45	209	2575	57.6	17.4	9.0
Colorado Plateau totals	14	35	131	313	2165	12170	92.4	10.8	3.8
Unknown	0	0	—	—	—	—	—	—	—
Statewide totals*	53	132	731	1501	6166	77795	106.5	9.4	5.5

*Statewide totals for sample size and trappers afield are not totals of the columns because trappers trapped multiple counties.

Red fox hunting harvest statistics by county and ecoregion, Utah 2021–2022.

County	n	Hunters afield	Hunt harvest	Hunter-days afield	Hunter-days / fox	Foxes / hunter
Beaver	1	2	0	2	—	0.0
Box Elder	1	2	5	2	0.5	2.0
Iron	0	0	—	—	—	—
Juab	2	5	5	50	10.0	1.0
Millard	0	0	—	—	—	—
Tooele	0	0	—	—	—	—
Great Basin totals	4	10	10	55	5.5	1.0
Cache	1	2	5	25	5.0	2.0
Davis	0	0	—	—	—	—
Morgan	0	0	—	—	—	—
Piute	0	0	—	—	—	—
Rich	0	0	—	—	—	—
Salt Lake	0	0	—	—	—	—
Sanpete	1	2	0	0	—	0.0
Sevier	2	5	0	5	—	0.0
Summit	1	2	0	0	—	0.0
Utah	3	7	0	343	—	0.0
Wasatch	1	2	0	2	—	0.0
Weber	1	2	2	2	1.0	1.0
Rocky Mountain totals	10	25	7	378	50.7	0.3
Daggett	0	0	—	—	—	—
Duchesne	1	2	0	12	—	0.0
Uintah	3	7	0	56	—	0.0
Uintah Basin totals	4	10	0	68	—	0.0
Carbon	1	2	0	2	—	0.0
Emery	0	0	—	—	—	—
Garfield	1	2	0	2	—	0.0
Grand	1	2	25	17	0.7	10.0
Kane	0	0	—	—	—	—
San Juan	2	5	0	75	—	0.0
Washington	0	0	—	—	—	—
Wayne	1	2	0	0	—	0.0
Colorado Plateau totals	6	15	25	97	3.9	1.7
Unknown	0	0	—	—	—	—
Statewide totals*	23	57	42	598	14.1	0.7

*Statewide totals for sample size and hunters afield are not totals of the columns because hunters hunted multiple counties.

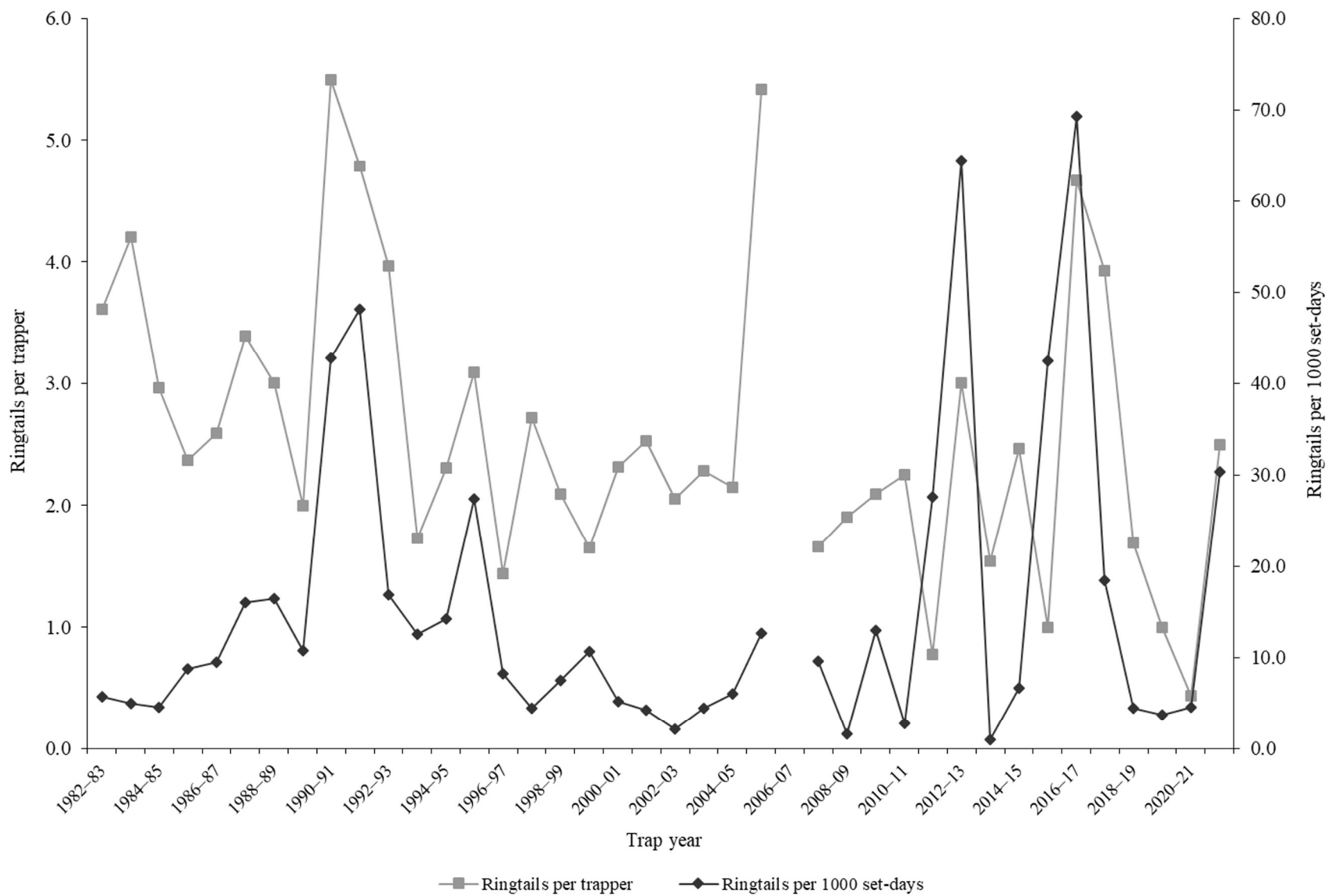
RINGTAIL

Statewide ringtail harvest statistics*, Utah 1982–2022.

Trap year	Trappers afield	Incidental harvest	Trap harvest	Hunt harvest	Set-days / ringtail	Ringtails / 1000 set-days	Ringtails / trapper	Pelt price (\$)
1982–83	90	—	325	—	176	5.7	3.6	4.40
1983–84	90	—	378	—	203	4.9	4.2	3.96
1984–85	85	—	252	—	218	4.6	3.0	3.15
1985–86	68	—	161	—	114	8.8	2.4	2.69
1986–87	79	—	205	—	105	9.6	2.6	3.64
1987–88	79	—	268	—	62	16.0	3.4	2.40
1988–89	62	—	186	—	61	16.4	3.0	5.70
1989–90	66	—	132	—	93	10.7	2.0	2.65
1990–91	18	—	99	—	23	42.8	5.5	3.50
1991–92	46	—	220	—	21	48.1	4.8	3.22
1992–93	27	—	107	—	59	16.9	4.0	3.97
1993–94	37	—	64	—	80	12.6	1.7	4.04
1994–95	69	—	159	—	70	14.3	2.3	6.41
1995–96	44	—	136	—	37	27.4	3.1	6.96
1996–97	32	—	46	—	122	8.2	1.4	11.68
1997–98	21	—	57	—	227	4.4	2.7	2.99
1998–99	66	—	138	—	134	7.5	2.1	4.17
1999–00	61	—	101	—	93	10.7	1.7	7.03
2000–01	51	—	118	—	194	5.2	2.3	6.00
2001–02	40	—	101	—	236	4.2	2.5	10.29
2002–03	56	—	115	—	474	2.1	2.1	5.20
2003–04	42	—	96	—	223	4.5	2.3	6.83
2004–05	59	—	127	—	165	6.1	2.2	11.12
2005–06	19	—	103	—	79	12.7	5.4	9.31
2006–07	98	—	—	—	—	—	—	12.37
2007–08	65	—	108	—	104	9.6	1.7	14.86
2008–09	31	—	59	—	621	1.6	1.9	10.70
2009–10	22	63	46	—	77	13.0	2.1	15.00
2010–11	16	26	36	—	356	2.8	2.3	18.91
2011–12	18	14	14	—	36	27.6	0.8	12.21
2012–13	7	41	21	0	16	64.5	3.0	15.66
2013–14	24	64	37	0	991	1.0	1.5	17.91
2014–15	13	32	32	0	150	6.7	2.5	17.27
2015–16	18	52	18	0	24	42.4	1.0	12.56
2016–17	18	18	84	0	14	69.3	4.7	23.47
2017–18	28	47	110	2	55	18.4	3.9	20.81
2018–19	13	0	15	7	221	4.5	1.7	10.36
2019–20	6	0	6	0	271	3.7	1.0	27.77
2020–21	16	0	7	0	219	4.6	0.4	—
2021–22	12	12	12	5	33	30.3	2.5	20.22
Average	43	28	110	1	166	15.5	2.6	9.78

*Trappers and ringtails per trapper include hunters and their harvest. Set-days per ringtail and ringtails per 1000 set-days are based only on trapping activity, and do not include hunt harvest or hunter-days afield.

Statewide ringtail harvest trends, Utah 1982–2022.



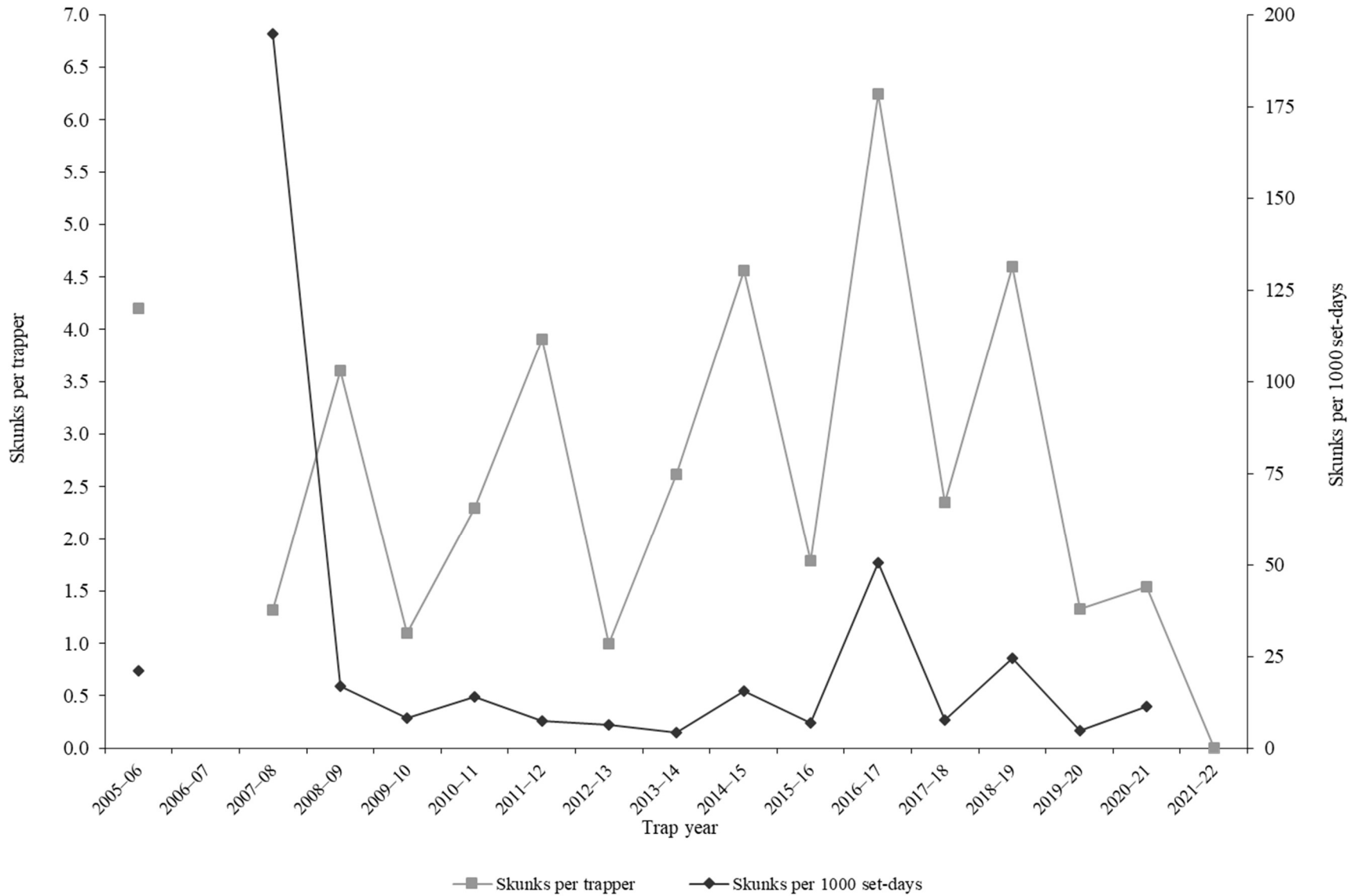
SPOTTED SKUNK

Statewide spotted skunk harvest statistics*, Utah 2005–2022.

Trap year	Trappers afield	Incidental harvest	Trap harvest	Hunt harvest	Set-days / skunk	Skunks / 1000 set-days	Skunks / trapper	Pelt price (\$)
2005–06	34	—	144	—	47	21.2	4.2	5.37
2006–07	106	—	—	—	—	—	—	12.42
2007–08	34	—	45	—	5	194.8	1.3	12.07
2008–09	67	—	238	—	60	16.8	3.6	8.00
2009–10	19	95	21	—	124	8.1	1.1	15.00
2010–11	33	200	76	—	71	14.0	2.3	15.00
2011–12	11	221	14	29	135	7.4	3.9	8.25
2012–13	17	137	17	0	156	6.4	1.0	14.48
2013–14	13	206	17	17	230	4.3	2.6	13.51
2014–15	25	285	114	0	65	15.5	4.6	9.80
2015–16	33	321	55	4	145	6.9	1.8	6.09
2016–17	8	63	50	0	20	50.5	6.3	5.51
2017–18	23	155	47	7	130	7.7	2.3	8.65
2018–19	15	115	69	0	41	24.5	4.6	—
2019–20	6	68	8	0	205	4.9	1.3	—
2020–21	13	26	20	0	87	11.5	1.5	—
2021–22	0	45	0	0	—	—	0.0	—
Average	27	149	58	5	101	26.3	2.8	10.32

*Trappers and skunks per trapper include hunters and their harvest. Set-days per skunk and skunks per 1000 set-days are based only on trapping activity, and do not include hunt harvest or hunter-days afield.

Statewide spotted skunk* harvest trends, Utah 2005–2022.



*Prior to 2005–06, spotted skunk harvest and trapping activity were combined with striped skunk.

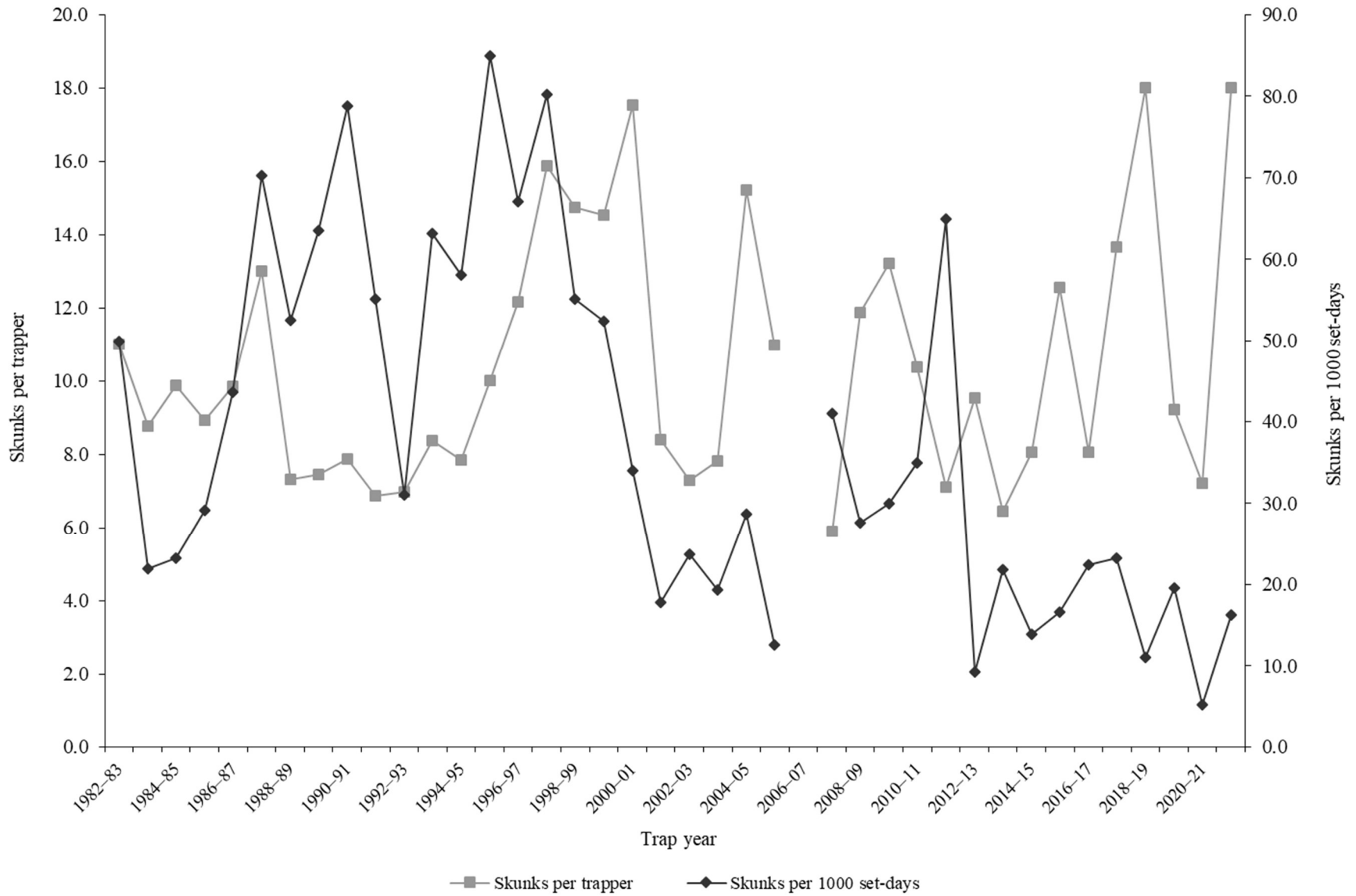
STRIPED SKUNK

Statewide striped skunk harvest statistics*, Utah 1982–2022.

Trap year	Trappers afield	Incidental harvest	Trap harvest	Hunt harvest	Set-days / skunk	Skunks / 1000 set-days	Skunks / trapper	Pelt price (\$)
1982–83	140	—	1540	—	20	49.9	11.0	3.00
1983–84	144	—	1262	—	45	22.0	8.8	2.85
1984–85	111	—	1097	—	43	23.3	9.9	2.17
1985–86	195	—	1741	—	34	29.1	8.9	—
1986–87	188	—	1851	—	23	43.6	9.8	—
1987–88	185	—	2404	—	14	70.2	13.0	1.05
1988–89	132	—	966	—	19	52.5	7.3	0.30
1989–90	173	—	1289	—	16	63.6	7.5	0.30
1990–91	82	—	645	—	13	78.8	7.9	0.30
1991–92	151	—	1037	—	18	55.2	6.9	4.00
1992–93	132	—	922	—	32	31.1	7.0	5.30
1993–94	175	—	1465	—	16	63.2	8.4	7.35
1994–95	183	—	1438	—	17	58.1	7.9	9.29
1995–96	175	—	1753	—	12	84.9	10.0	6.63
1996–97	142	—	1726	—	15	67.1	12.2	6.00
1997–98	182	—	2890	—	12	80.2	15.9	4.11
1998–99	219	—	3227	—	18	55.1	14.7	5.67
1999–00	188	—	2730	—	19	52.3	14.5	8.50
2000–01	220	—	3857	—	29	34.0	17.5	8.69
2001–02	214	—	1798	—	56	17.8	8.4	6.79
2002–03	237	—	1732	—	42	23.7	7.3	4.24
2003–04	295	—	2305	—	52	19.3	7.8	10.00
2004–05	280	—	4264	—	35	28.7	15.2	4.64
2005–06	95	—	1043	—	79	12.6	11.0	5.37
2006–07	138	—	—	—	—	—	—	6.07
2007–08	144	—	848	—	24	41.0	5.9	4.52
2008–09	143	—	1697	—	36	27.6	11.9	3.15
2009–10	124	1632	1638	—	33	30.0	13.2	6.47
2010–11	154	1136	1597	—	29	35.0	10.4	5.29
2011–12	107	916	602	160	15	65.0	7.1	4.55
2012–13	137	1159	1241	65	108	9.3	9.5	5.01
2013–14	108	1272	654	44	46	21.8	6.5	6.96
2014–15	82	1230	645	16	72	13.9	8.1	4.94
2015–16	111	818	1187	206	60	16.6	12.5	4.40
2016–17	65	727	521	3	45	22.4	8.1	5.95
2017–18	115	919	1198	373	43	23.2	13.7	6.16
2018–19	63	430	1052	82	90	11.1	18.0	12.15
2019–20	70	607	562	83	51	19.6	9.2	9.60
2020–21	94	573	632	46	189	5.3	7.2	—
2021–22	55	741	987	0	61	16.3	18.0	—
Average	149	935	1540	98	41	37.8	10.5	5.33

*Trappers and skunks per trapper include hunters and their harvest. Set-days per skunk and skunks per 1000 set-days are based only on trapping activity, and do not include hunt harvest or hunter-days afield.

Statewide striped skunk* harvest trends, Utah 1982–2022.



*Prior to 2005–06, harvest and trapping activity included both striped skunk and spotted skunk.

Striped skunk trapping harvest statistics by county and ecoregion, Utah 2021–2022.

County	n	Trappers afield	Trap harvest	Traps set	Trapping days	Set-days	Set-days / skunk	Skunks / 1000 set-days	Skunks / trapper
Beaver	0	0	—	—	—	—	—	—	—
Box Elder	8	20	216	254	358	4283	19.8	50.5	10.9
Iron	0	0	—	—	—	—	—	—	—
Juab	0	0	—	—	—	—	—	—	—
Millard	0	0	—	—	—	—	—	—	—
Tooele	1	2	15	2	447	447	30.0	33.3	6.0
Great Basin totals	9	22	231	256	805	4730	20.5	48.9	10.3
Cache	5	12	323	336	532	27671	85.6	11.7	26.0
Davis	2	5	147	85	216	4703	32.1	31.2	29.5
Morgan	1	2	82	65	181	4718	57.5	17.4	33.0
Piute	0	0	—	—	—	—	—	—	—
Rich	2	5	0	5	42	35	—	0.0	0.0
Salt Lake	0	0	—	—	—	—	—	—	—
Sanpete	0	0	—	—	—	—	—	—	—
Sevier	0	0	—	—	—	—	—	—	—
Summit	0	0	—	—	—	—	—	—	—
Utah	3	7	30	67	117	664	22.3	44.9	4.0
Wasatch	0	0	—	—	—	—	—	—	—
Weber	4	10	114	196	1213	15061	131.7	7.6	11.5
Rocky Mountain totals	17	42	696	753	2302	52851	75.9	13.2	16.5
Daggett	0	0	—	—	—	—	—	—	—
Duchesne	0	0	—	—	—	—	—	—	—
Uintah	0	0	—	—	—	—	—	—	—
Uintah Basin totals	0	0	—	—	—	—	—	—	—
Carbon	0	0	—	—	—	—	—	—	—
Emery	1	2	10	30	224	2685	270.0	3.7	4.0
Garfield	0	0	—	—	—	—	—	—	—
Grand	1	2	50	20	37	298	6.0	166.7	20.0
Kane	0	0	—	—	—	—	—	—	—
San Juan	0	0	—	—	—	—	—	—	—
Washington	0	0	—	—	—	—	—	—	—
Wayne	0	0	—	—	—	—	—	—	—
Colorado Plateau totals	2	5	60	50	261	2983	50.0	20.0	12.0
Unknown	0	0	—	—	—	—	—	—	—
Statewide totals*	22	55	987	1059	3368	60564	61.4	16.3	18.0

*Statewide totals for sample size and trappers afield are not totals of the columns because trappers trapped multiple counties.

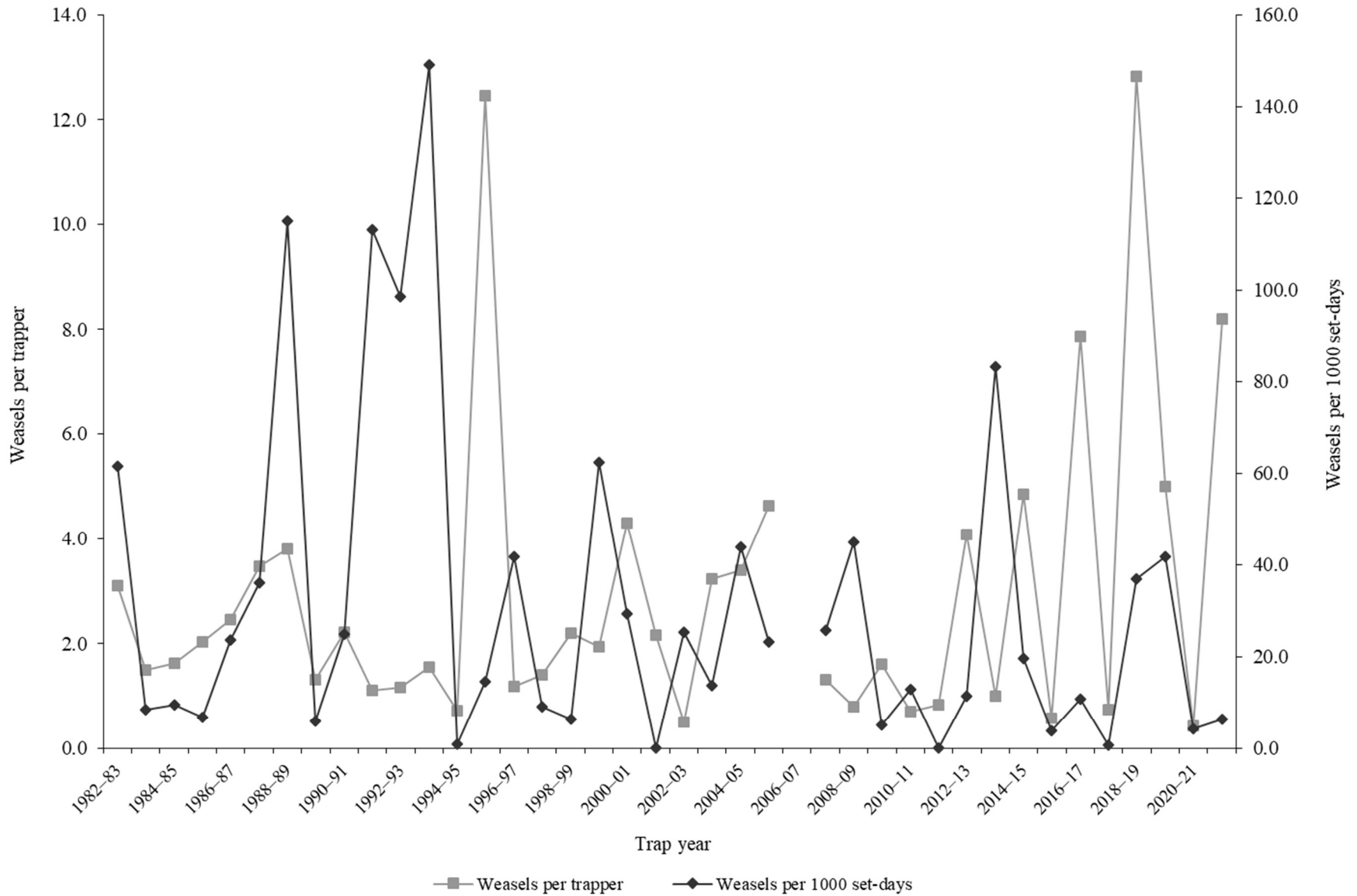
WEASEL

Statewide weasel harvest statistics*, Utah 1982–2022.

Trap year	Trappers afield	Incidental harvest	Trap harvest	Hunt harvest	Set-days / weasel	Weasels / 1000 set-days	Weasels / trapper	Pelt price (\$)
1982–83	19	—	59	—	16	61.5	3.1	1.00
1983–84	22	—	33	—	117	8.5	1.5	0.00
1984–85	46	—	75	—	106	9.4	1.6	0.75
1985–86	33	—	67	—	149	6.7	2.0	0.00
1986–87	50	—	123	—	42	23.6	2.5	1.50
1987–88	61	—	212	—	28	36.1	3.5	1.18
1988–89	24	—	91	—	9	115.0	3.8	0.25
1989–90	25	—	33	—	166	6.0	1.3	0.25
1990–91	14	—	31	—	40	24.8	2.2	0.30
1991–92	17	—	19	—	9	113.1	1.1	0.30
1992–93	24	—	28	—	10	98.6	1.2	0.30
1993–94	20	—	31	—	7	149.0	1.6	5.11
1994–95	18	—	13	—	1189	0.8	0.7	1.57
1995–96	24	—	299	—	69	14.6	12.5	3.08
1996–97	11	—	13	—	24	41.7	1.2	7.40
1997–98	20	—	28	—	111	9.0	1.4	3.03
1998–99	15	—	33	—	157	6.4	2.2	5.50
1999–00	34	—	66	—	16	62.4	1.9	—
2000–01	36	—	155	—	34	29.3	4.3	8.50
2001–02	6	—	13	—	0	—	2.2	—
2002–03	6	—	3	—	39	25.4	0.5	4.76
2003–04	18	—	58	—	73	13.8	3.2	—
2004–05	25	—	85	—	23	43.9	3.4	2.90
2005–06	41	—	190	—	43	23.3	4.6	—
2006–07	49	—	—	—	—	—	—	6.26
2007–08	11	—	15	—	39	25.6	1.3	2.99
2008–09	14	—	11	—	22	44.9	0.8	—
2009–10	29	13	47	—	196	5.1	1.6	7.64
2010–11	23	20	17	—	78	12.8	0.7	7.21
2011–12	25	4	0	21	—	0.0	0.8	4.58
2012–13	27	21	110	0	87	11.5	4.1	—
2013–14	3	10	3	0	12	83.3	1.0	5.00
2014–15	13	13	63	0	51	19.7	4.8	3.89
2015–16	26	15	11	4	258	3.9	0.6	3.06
2016–17	29	8	228	0	93	10.7	7.9	3.55
2017–18	19	7	12	2	1795	0.6	0.7	1.00
2018–19	11	26	139	2	27	37.0	12.8	—
2019–20	2	4	10	0	24	41.7	5.0	9.18
2020–21	16	3	7	0	233	4.3	0.4	—
2021–22	15	0	122	0	159	6.3	8.2	—
Average	23	11	65	3	146	32.4	2.9	3.29

*Trappers and weasels per trapper include hunters and their harvest. Set-days per weasel and weasels per 1000 set-days are based only on trapping activity, and do not include hunt harvest or hunter-days afield.

Statewide weasel harvest trends, Utah 1982–2022.



APPENDIX: UTAH FURBEARER MANAGEMENT ECOREGIONS

