

UTAH FURBEARER ANNUAL REPORT 2023–2024



Publication No. 24-20



UTAH FURBEARER ANNUAL REPORT 2023–2024

Prepared by:

Heather H. Bernales
Biometrician

and

Darren DeBlois
Mammals Program Coordinator

Publication No. 24-20

Annual Performance Report for Federal Aid Project W-65-M, segment 72

State of Utah
Department of Natural Resources
DIVISION OF WILDLIFE RESOURCES

J. Shirley
Division Director

TABLE OF CONTENTS

Definitions.....	1
Introduction.....	2
Methods.....	2
Results.....	3
Harvest by species.....	9
Badger.....	10
Beaver.....	13
Bobcat.....	17
Coyote.....	29
Gray fox.....	34
Kit fox.....	37
Marten.....	40
Mink.....	43
Muskrat.....	46
Raccoon.....	49
Red fox.....	53
Ringtail.....	57
Spotted skunk.....	60
Striped skunk.....	62
Weasel.....	65
Appendix: Utah furbearer management ecoregions.....	68

DEFINITIONS

Incidental harvest: Furbearers harvested in traps intended for a different furbearer species.

Trap year: Time frame corresponding to the 2023–24 furbearer seasons, as outlined in the 2023–24 Utah Furbearer Guidebook.

Trappers afield: Number of furbearer license holders who trapped furbearers during a particular trap year. License holders who took furbearers by means other than trapping, including shooting or with the aid of dogs, are included in this figure except for bobcat.

Total harvest: Number of furbearers of a particular species taken by means of trapping and hunting by furbearer license holders. This figure does not include harvest of unprotected wildlife, such as coyote, muskrat, red fox, raccoon, or striped skunk, taken by persons who did not purchase a furbearer license, nor does it include harvest of furbearers taken for creating a nuisance or causing damage.

Total set-days: Number of traps set during the furbearer season for the trapping of a particular species, multiplied by the number of days these traps were in the field. This figure pertains only to trapping, and does not include days afield by furbearer hunters or pursuers.

Pelt price: Average price paid for pelts of a specific furbearer species harvested in Utah, obtained mainly from a summary of the prices bid at the Utah Trappers Association fur auction, as well as prices from a survey of registered furdealers buying pelts harvested in Utah.

Wildlife Services harvest (coyote only): Number of coyotes taken by USDA-APHIS Wildlife Services in a particular year. Prior to 2006–07, Wildlife Services yearly harvest summaries applied to their fiscal year, which begins October 1 and ends September 30, although most harvest takes place during spring. Beginning in 2006–07, Wildlife Services harvest is reported for the period July 1 to June 30 of the following year.

INTRODUCTION

The furbearer harvest report presents furbearer harvest and trapper/hunter effort trends across the state of Utah, based on data collected from furbearer trappers and hunters. This report represents the furbearer portion of the Annual Performance Report for Federal Aid Project W-65-M, segment 72, grant agreement period July 1, 2023 through June 30, 2024. This Federal Aid project covers the 2023–24 trapping seasons. Additionally this report presents statewide trends since the early 1980s and population trend indicators for bobcats as well as the estimated economic value of Utah’s furbearer harvest each year. Furbearer harvest and trapper/hunter effort may have been driven more by pelt price than by availability, so annual fur harvest should not be used as the sole means to assess/project population sizes.

Furbearers included badger, beaver, bobcat, gray fox, kit fox, mink, marten, ringtail, spotted skunk, and weasel. A furbearer license was required to harvest any of these species, and additional permits were required to harvest bobcats and martens. There were no bag limits for furbearers, except bobcats. Each bobcat permit allowed a person to harvest one bobcat, and a single person could obtain up to 6 bobcat permits in 2023–24. Sales of bobcat permits were not limited. Season dates for badger, gray fox, kit fox, marten, ringtail, spotted skunk, and weasel were September 16, 2023 through March 1, 2024. Bobcat season was November 16, 2023 through March 1, 2024. Season dates for beaver and mink were September 16, 2023 through April 1, 2024.

Coyote, muskrat, red fox, raccoon, and striped skunk were not under the jurisdiction of the Division, and/or were unprotected. Those species could be taken year round without a license; therefore, results presented in this report do not include harvest by persons who did not purchase a furbearer license. It was prohibited to take black-footed ferret, fisher, lynx, river otter, wolf, and wolverine.

METHODS

Furbearer harvest and effort information was obtained from a telephone/web mixed-mode survey of a statistically-valid random sample of furbearer license holders. The accuracy of that survey was dependent upon the following assumptions: (1) a random sample was achieved (i.e., there was no response bias by those who harvested successfully versus those who did not), (2) respondents recorded or remembered data accurately and did not guess or lie, and (3) respondents clearly understood the questions.

Trappers who harvested bobcats and martens were required to bring the animals’ pelts to a Division office or officer to have permanent tags attached and to surrender the lower jaws. Bobcat and marten harvest data presented in this report, such as county of kill and sex of harvest, were collected at that time; as such, that information was not projected. Additional information on bobcat harvest, such as harvest effort by method, trappers-afield, number of sets, and number of days was determined by the survey mentioned in the preceding paragraph. Due to the small number of marten trappers in Utah, we did not attempt to survey marten trappers. Instead, since a separate permit is required to trap marten, we assumed that all those who purchased a marten permit attempted to trap marten.

To determine age structure of the bobcat harvest, a canine tooth from each bobcat jaw was sectioned and cementum-annuli was aged by Matson's Lab in Manhattan, Montana. Survival rates were estimated using the Chapman-Robson estimator. Pelt prices were obtained mainly from a summary of the prices bid at the Utah Trappers Association fur auction, as well as from a survey of registered furdealers buying pelts harvested in Utah.

Because some furbearer species in Utah were rare or not highly sought after by trappers, it was not possible to achieve sufficient sample sizes for these species to make valid statistical inferences. Although the trends for statewide harvest and effort were still valid, at the county level, the harvest and effort estimates had low precision and were likely inaccurate. As such, results by county were only reported for species with a sample size ≥ 20 .

RESULTS

License Sales and General Survey Results

Furbearer licenses were valid for 365 days from the date of purchase. We used the 365-day period of April 1 to March 31 to determine the total number of furbearer licenses sold for the furbearer season. A total of 1,531 furbearer licenses were sold for the 2023–24 season. The percentage of license holders who bought a furbearer license but did not attempt to harvest furbearers was 35%. The number of trappers afield in 2023–24 was 989.

Furbearer Harvest, Historical Trends, and Economic Value

The majority of the harvest taken by furbearer license holders in 2023–24 was of non-protected species—coyote, muskrat, raccoon, red fox, and striped skunk. Total harvest of regulated furbearer species (i.e., species with designated trapping seasons) was 3,061 in 2023–24, lower than the previous 10 years.

The Utah Trappers Association resumed its annual Fur Sale in 2024 and this report includes average pelt prices from their website at https://www.utahtrappers.org/uploads/1/4/2/4/142452216/2024_fur_sale_averages1.pdf, accessed June 4, 2024.

Furbearer license sales and survey responses, Utah 1982–2023.

Trap year	Furbearer licenses sold			License holders surveyed		Projection factor	% license holders not afield
	Resident	Nonresident	Total	Total	Percent (%)		
1982–83	—	—	1325	664	50.1	—	—
1983–84	—	—	1367	616	45.1	—	—
1984–85	—	—	1491	806	54.1	—	—
1985–86	—	—	1424	680	47.8	—	—
1986–87	—	—	1342	585	43.6	—	—
1987–88	—	—	1576	731	46.4	—	—
1988–89	—	—	1318	721	54.7	—	—
1989–90	—	—	1084	597	55.1	—	—
1990–91	—	—	949	513	54.1	—	30.0
1991–92	—	—	1210	689	56.9	—	2.2
1992–93	—	—	1426	857	60.1	—	16.0
1993–94	—	—	1315	—	—	—	—
1994–95	—	—	1287	585	45.5	—	7.0
1995–96	—	—	1240	683	55.1	—	21.2
1996–97	—	—	1131	606	53.6	—	25.4
1997–98	—	—	1190	498	41.8	—	19.5
1998–99	—	—	1191	395	33.2	—	19.8
1999–00	1172	39	1211	458	37.8	2.6	11.6
2000–01	1204	20	1224	420	34.3	2.9	12.4
2001–02	956	21	977	302	30.9	3.2	11.6
2002–03	1409	40	1449	514	35.5	2.8	16.3
2003–04	1729	47	1776	597	33.6	3.0	16.9
2004–05	1830	65	1895	615	32.5	3.1	18.2
2005–06	1631	57	1688	260	15.4	6.5	27.7
2006–07	2029	81	2110	262	12.4	8.1	26.7
2007–08	2085	55	2140	563	26.3	3.8	31.8
2008–09	2045	57	2102	750	35.7	2.8	34.8
2009–10	1902	34	1936	798	41.2	2.4	30.2
2010–11	1788	29	1817	555	30.5	3.3	30.1
2011–12	1856	36	1892	531	28.1	3.6	33.3
2012–13	2080	52	2132	622	29.2	3.4	34.4
2013–14	2389	60	2449	726	29.6	3.4	35.4
2014–15	2802	67	2869	907	31.6	3.2	41.1
2015–16	2580	52	2632	714	27.1	3.7	35.6
2016–17	2078	54	2132	815	38.2	2.6	31.2
2017–18	1972	54	2026	864	42.6	2.3	44.1
2018–19	1836	44	1880	866	46.1	2.2	51.0
2019–20	1422	48	1470	712	48.4	2.1	39.5
2020–21	2275	58	2333	716	30.7	3.3	40.1

Furbearer license sales and survey responses, Utah 1982–2023 (continued).

Trap year	Furbearer licenses sold			License holders surveyed		Projection factor	% license holders not afield
	Resident	Nonresident	Total	Total	Percent (%)		
2021–22	1706	34	1740	700	40.2	2.5	40.9
2022–23	1726	54	1780	529	29.7	3.4	44.4
2023–24	1482	49	1531	404	26.4	3.8	35.4
Average	1839	48	1644	620	39.3	2.8	27.7

Statewide total furbearer harvest* estimates by species, Utah 2014–2024.

Species	Trap year										Average 2014–24
	2014–15	2015–16	2016–17	2017–18	2018–19	2019–20	2020–21	2021–22	2022–23	2023–24	
Badger	417	648	486	297	369	227	306	298	158	163	337
Beaver	1388	1511	973	945	741	950	929	1402	1319	811	1097
Bobcat	2919	1683	1856	2954	1652	1173	1011	965	851	1267	1633
Coyote	6873	8001	5124	5259	3590	3484	6350	3774	4517	3013	4999
Gray fox	1015	1106	625	1067	669	429	756	495	603	603	737
Kit fox	145	99	154	44	13	103	62	22	31	19	69
Marten	22	9	2	15	11	8	4	0	1	1	7
Mink	341	188	246	272	246	361	127	121	44	42	199
Muskrat	6092	6175	3163	7265	3491	4992	4962	5787	2888	2895	4771
Raccoon	5437	4748	3628	5321	2660	4007	4464	3417	4118	2467	4027
Red fox	2272	1880	1625	1503	981	1179	788	1302	1198	857	1359
Ringtail	64	70	102	160	22	6	7	29	27	83	57
Spotted skunk	399	380	113	209	184	76	46	0	23	72	150
Striped skunk	1875	2211	1250	2490	1564	1251	1251	1728	1033	618	1527
Weasel	76	30	236	21	167	14	10	122	229	0	91

*Total harvest includes incidental take.

Statewide furbearer trapping harvest statistics* by species, Utah 2023–24.

Species	Trappers afield	Trap harvest	Set-days	Set-days / furbearer	Furbearers / 1000 set-days	Furbearers / trapper
Badger	34	61	10205	167.3	6.0	1.8
Beaver	117	803	23465	29.2	34.2	6.9
Bobcat	531	1038	320496	309.1	3.2	2.0
Coyote	296	1372	215973	157.4	6.4	4.6
Gray fox	38	250	10353	41.4	24.1	6.6
Kit fox	4	0	455	—	0.0	0.0
Marten	185	1	—	—	—	0.0
Mink	11	34	1141	33.6	29.8	3.1
Muskrat	49	2888	29847	10.3	96.8	58.9
Raccoon	178	1944	57188	29.4	34.0	10.9
Red fox	148	621	39912	64.3	15.6	4.2
Ringtail	19	34	2562	75.4	13.3	1.8
Spotted skunk	8	0	144	—	0.0	0.0
Striped skunk	45	303	8212	27.1	36.9	6.7
Weasel	8	0	1395	—	0.0	0.0

*Does not include incidental harvest.

Statewide furbearer hunting harvest by species, Utah 2023–24.

Species	Hunters afield	Hunt harvest	Hunting days	Days / furbearer	Furbearers / hunter
Badger	34	27	398	14.7	0.8
Beaver	8	8	8	1.0	1.0
Bobcat	140	229	2431	10.6	1.6
Coyote	239	1417	6767	4.8	5.9
Gray fox	34	64	212	3.3	1.9
Kit fox	11	8	193	24.1	0.7
Mink	8	4	8	2.0	0.5
Muskrat	4	8	4	0.5	2.0
Raccoon	34	205	174	0.8	6.0
Red fox	23	53	182	3.4	2.3
Ringtail	8	4	30	7.5	0.5
Spotted skunk	15	8	15	1.9	0.5
Striped skunk	19	19	500	26.3	1.0
Weasel	0	—	—	—	—

Number of furbearers harvested in traps set for other species (i.e. incidental take), Utah 2023–24.

Species	Incidental harvest	Trap / hunt harvest	Total harvest	% incidental harvest
Badger	76	87	163	46.6
Beaver	0	811	811	0.0
Bobcat*	4	1267	1267	0.3
Coyote	224	2789	3013	7.4
Gray fox	288	315	603	47.8
Kit fox	11	8	19	57.9
Marten	0	1	1	0.0
Mink	4	38	42	9.5
Muskrat	0	2895	2895	0.0
Raccoon	318	2149	2467	12.9
Red fox	182	675	857	21.2
Ringtail	45	38	83	54.2
Spotted skunk	64	8	72	88.9
Striped skunk	296	322	618	47.9
Weasel	0	0	0	—
Total	1512	11403	12911	11.7

*Incidental bobcat harvest were accounted for in trap harvest.

HARVEST BY SPECIES

BADGER

Statewide badger harvest statistics*, Utah 1982–2024.

Trap year	Trappers afield	Incidental harvest	Trap harvest	Hunt harvest	Set-days / badger	Badgers / 1000 set-days	Badgers / trapper	Pelt price (\$)
1982–83	250	—	725	—	118	8.5	2.9	8.20
1983–84	188	—	560	—	212	4.7	3.0	8.56
1984–85	225	—	670	—	227	4.4	3.0	10.14
1985–86	194	—	496	—	182	5.5	2.6	3.96
1986–87	198	—	424	—	146	6.8	2.1	7.64
1987–88	212	—	459	—	84	11.9	2.2	6.04
1988–89	204	—	417	—	93	10.7	2.0	4.66
1989–90	207	—	366	—	80	12.5	1.8	4.78
1990–91	81	—	172	—	50	19.9	2.1	7.27
1991–92	134	—	237	—	71	14.1	1.8	8.50
1992–93	148	—	232	—	76	13.2	1.6	9.95
1993–94	143	—	238	—	188	5.3	1.7	7.18
1994–95	182	—	327	—	77	13.0	1.8	13.93
1995–96	133	—	276	—	47	21.4	2.1	10.52
1996–97	118	—	222	—	54	18.7	1.9	13.01
1997–98	98	—	271	—	83	12.1	2.7	6.59
1998–99	135	—	318	—	117	8.5	2.4	16.96
1999–00	177	—	433	—	64	15.5	2.4	13.04
2000–01	189	—	450	—	147	6.8	2.4	17.18
2001–02	137	—	275	—	288	3.5	2.0	15.60
2002–03	234	—	541	—	165	6.0	2.3	13.73
2003–04	223	—	453	—	341	2.9	2.0	18.72
2004–05	203	—	432	—	184	5.4	2.1	13.66
2005–06	70	—	120	—	324	3.1	1.7	15.02
2006–07	187	—	—	—	—	—	—	18.07
2007–08	171	—	275	—	98	10.2	1.6	14.14
2008–09	146	—	287	—	282	3.5	2.0	17.41
2009–10	78	196	138	—	113	8.8	1.8	19.34
2010–11	115	115	194	—	35	28.5	1.7	17.27
2011–12	110	82	46	89	120	8.3	0.4	20.44
2012–13	99	147	117	38	163	6.1	1.2	17.36
2013–14	91	216	98	57	180	5.5	1.1	15.73
2014–15	92	297	89	32	183	5.5	1.0	11.69
2015–16	103	464	140	44	384	2.6	0.9	7.63
2016–17	78	222	233	31	37	27.1	3.0	10.28
2017–18	91	145	79	68	119	8.4	0.9	6.51
2018–19	85	115	161	93	101	9.9	3.0	9.30
2019–20	60	99	93	35	61	16.5	2.1	18.12
2020–21	91	137	98	72	105	9.5	1.9	—

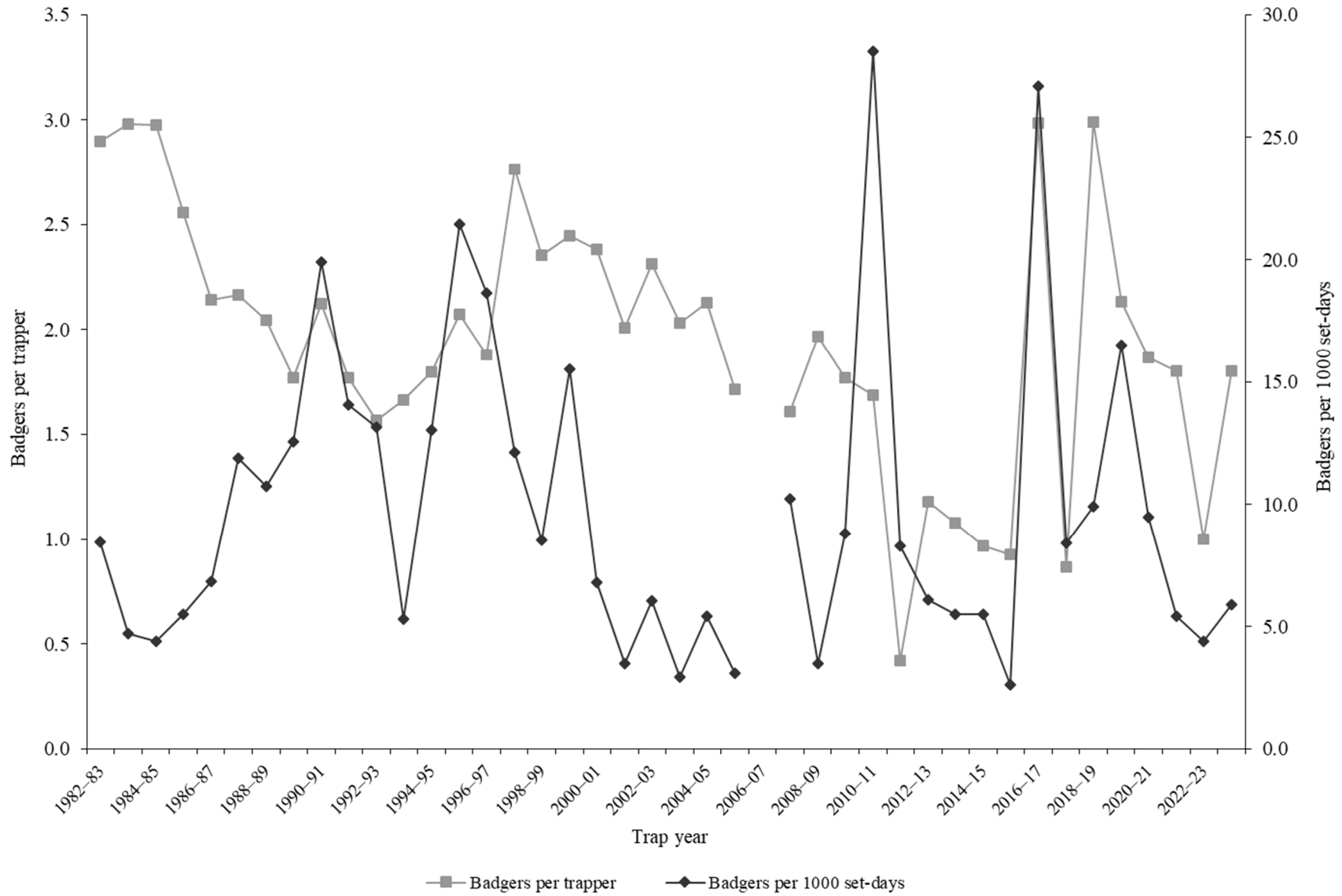
*Trappers and badgers per trapper include hunters and their harvest. Set-days per badger and badgers per 1000 set-days are based only on trapping activity, and do not include hunt harvest or hunter-days afield.

Statewide badger harvest statistics*, Utah 1982–2024 (continued).

Trap year	Trappers afield	Incidental harvest	Trap harvest	Hunt harvest	Set-days / badger	Badgers / 1000 set-days	Badgers / trapper	Pelt price (\$)
2021–22	80	196	40	62	186	5.4	1.8	45.17
2022–23	47	121	30	7	225	4.4	1.0	15.44
2023–24	68	76	61	27	168	5.9	1.8	47.80
Average	141	175	275	50	146	9.8	1.9	13.82

*Trappers and badgers per trapper include hunters and their harvest. Set-days per badger and badgers per 1000 set-days are based only on trapping activity, and do not include hunt harvest or hunter-days afield.

Statewide badger harvest trends, Utah 1982–2024.



BEAVER

Statewide beaver harvest statistics*, Utah 1982–2024.

Trap year	Trappers afield	Incidental harvest	Trap harvest	Hunt harvest	Set-days / beaver	Beavers / 1000 set-days	Beavers / trapper	Pelt price (\$)
1982–83	181	—	1584	—	20	50.1	8.8	12.89
1983–84	200	—	1788	—	12	80.8	8.9	14.10
1984–85	285	—	2664	—	20	51.3	9.3	16.44
1985–86	293	—	3242	—	19	53.7	11.1	14.64
1986–87	338	—	4138	—	26	39.2	12.2	22.64
1987–88	409	—	4716	—	8	122.9	11.5	14.67
1988–89	277	—	2721	—	15	65.4	9.8	10.02
1989–90	390	—	3436	—	14	70.5	8.8	11.93
1990–91	176	—	1551	—	14	73.8	8.8	6.49
1991–92	216	—	1492	—	13	74.5	6.9	8.94
1992–93	134	—	956	—	14	71.9	7.1	7.74
1993–94	171	—	1761	—	12	81.6	10.3	9.59
1994–95	239	—	2551	—	16	61.0	10.7	12.65
1995–96	170	—	1530	—	10	95.7	9.0	13.40
1996–97	163	—	1299	—	10	95.7	8.0	21.15
1997–98	210	—	2896	—	13	74.6	13.8	13.58
1998–99	286	—	2950	—	20	51.0	10.3	9.37
1999–00	185	—	1830	—	13	78.4	9.9	10.98
2000–01	170	—	1992	—	18	54.7	11.7	10.32
2001–02	143	—	1689	—	16	64.5	11.8	10.85
2002–03	175	—	1720	—	49	20.3	9.8	9.47
2003–04	232	—	1781	—	55	18.2	7.7	14.10
2004–05	200	—	2664	—	25	40.7	13.3	13.91
2005–06	130	—	2239	—	29	33.9	17.2	17.75
2006–07	122	—	—	—	—	—	—	16.31
2007–08	133	—	745	—	24	42.5	5.6	17.50
2008–09	121	—	1165	—	31	31.9	9.6	13.15
2009–10	209	6	1904	—	35	28.5	9.1	11.60
2010–11	144	13	1039	—	34	29.8	7.2	12.76
2011–12	157	18	1008	—	39	25.4	6.4	15.61
2012–13	267	17	2245	14	26	37.9	8.4	20.26
2013–14	240	98	1913	10	25	39.3	8.0	14.33
2014–15	183	47	1332	9	27	37.5	7.3	11.60
2015–16	217	22	1486	4	28	36.1	6.8	7.46
2016–17	176	3	970	0	22	46.3	5.5	11.20
2017–18	141	5	940	0	26	38.8	6.7	6.34
2018–19	113	9	645	87	18	54.4	6.3	—
2019–20	138	81	863	6	46	21.9	6.4	9.15
2020–21	176	10	909	10	25	40.3	5.4	—

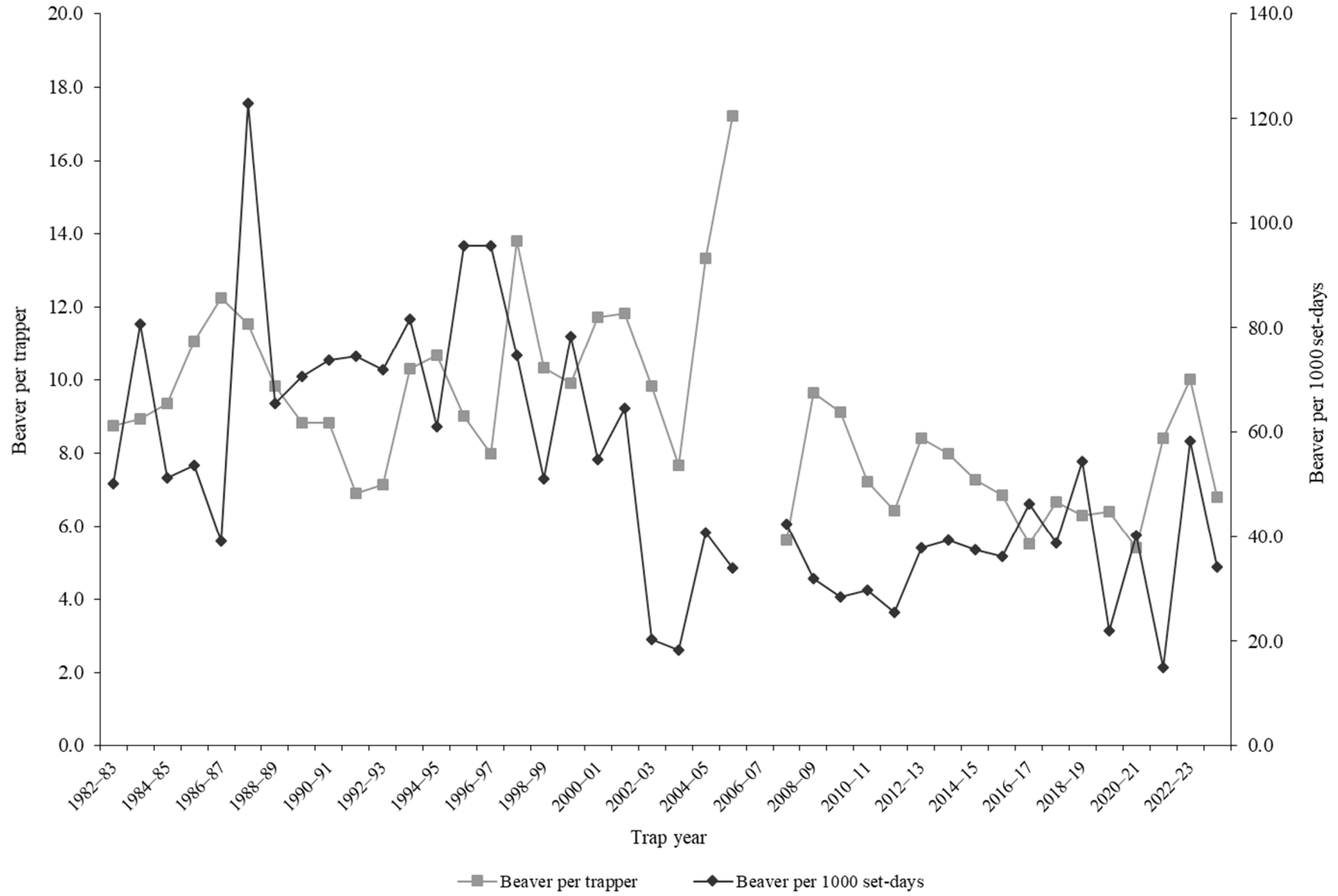
*Trappers and beavers per trapper include hunters and their harvest. Set-days per beaver and beavers per 1000 set-days are based only on trapping activity, and do not include hunt harvest or hunter-days afield.

Statewide beaver harvest statistics*, Utah 1982–2024 (continued).

Trap year	Trappers afield	Incidental harvest	Trap harvest	Hunt harvest	Set-days / beaver	Beavers / 1000 set-days	Beavers / trapper	Pelt price (\$)
2021–22	137	293	1104	5	67	15.0	8.4	14.89
2022–23	131	91	1215	13	17	58.3	10.0	15.27
2023–24	125	0	803	8	29	34.2	6.8	31.26
Average	198	48	1841	14	24	52.3	9.0	13.41

*Trappers and beavers per trapper include hunters and their harvest. Set-days per beaver and beavers per 1000 set-days are based only on trapping activity, and do not include hunt harvest or hunter-days afield.

Statewide beaver harvest trends, Utah 1982–2024.



Beaver trapping harvest statistics by county and ecoregion, Utah 2023–24.

County	n	Trappers afield	Trap harvest	Traps set	Trapping days	Set-days	Set-days / beaver	Beavers / 1000 set-days	Beavers / trapper
Beaver	0	0	—	—	—	—	—	—	—
Box Elder	2	8	117	42	265	1554	13.2	75.6	15.5
Iron	0	0	—	—	—	—	—	—	—
Juab	1	4	15	45	227	2729	180.0	5.6	4.0
Millard	0	0	—	—	—	—	—	—	—
Tooele	0	0	—	—	—	—	—	—	—
Great Basin totals	3	11	133	87	493	4282	32.3	31.0	11.7
Cache	3	11	57	42	205	788	13.9	72.1	5.0
Davis	0	0	—	—	—	—	—	—	—
Morgan	2	8	167	68	193	1842	11.0	90.5	22.0
Piute	0	0	—	—	—	—	—	—	—
Rich	0	0	—	—	—	—	—	—	—
Salt Lake	1	4	11	45	227	2729	240.0	4.2	3.0
Sanpete	0	0	—	—	—	—	—	—	—
Sevier	3	11	8	64	95	701	92.5	10.8	0.7
Summit	4	15	53	117	333	3301	62.2	16.1	3.5
Utah	8	30	171	216	739	7106	41.7	24.0	5.6
Wasatch	4	15	129	114	216	1648	12.8	78.2	8.5
Weber	2	8	27	53	83	576	21.7	46.1	3.5
Rocky Mountain totals	27	102	621	720	2092	18690	30.1	33.3	6.1
Daggett	0	0	—	—	—	—	—	—	—
Duchesne	1	4	4	8	15	30	8.0	125.0	1.0
Uintah	0	0	—	—	—	—	—	—	—
Uintah Basin totals	1	4	4	8	15	30	8.0	125.0	1.0
Carbon	1	4	8	15	27	106	14.0	71.4	2.0
Emery	0	0	—	—	—	—	—	—	—
Garfield	0	0	—	—	—	—	—	—	—
Grand	0	0	—	—	—	—	—	—	—
Kane	0	0	—	—	—	—	—	—	—
San Juan	0	0	—	—	—	—	—	—	—
Washington	2	8	38	38	87	356	9.4	106.4	5.0
Wayne	0	0	—	—	—	—	—	—	—
Colorado Plateau totals	3	11	45	53	114	462	10.2	98.4	4.0
Unknown	0	0	—	—	—	—	—	—	—
Statewide totals*	31	117	803	868	2713	23465	29.2	34.2	6.8

*Statewide totals for sample size and trappers afield are not totals of the columns because trappers trapped multiple counties.

BOBCAT

Statewide bobcat trapping harvest statistics, Utah 1982–2024.

Trap year	Trappers afield	Trap harvest	Set-days	Set-days / bobcat	Bobcats / 1000 set-days	Bobcats / trapper	Pelt price (\$)
1982–83	1145	2540	469979	185	5.4	2.2	171.00
1983–84	1050	2640	401841	152	6.6	2.5	189.00
1984–85	1253	2532	559480	221	4.5	2.0	202.00
1985–86	1083	1530	411493	269	3.7	1.4	197.00
1986–87	1036	1024	224778	220	4.6	1.0	309.00
1987–88	1108	1023	252680	247	4.0	0.9	245.00
1988–89	941	1042	175990	169	5.9	1.1	221.00
1989–90	1167	843	142360	169	5.9	0.7	102.00
1990–91	542	527	76218	145	6.9	1.0	87.00
1991–92	726	968	118293	122	8.2	1.3	104.00
1992–93	827	1171	139949	120	8.4	1.4	90.00
1993–94	900	1256	191367	152	6.6	1.4	118.60
1994–95	914	1293	210522	163	6.1	1.4	70.02
1995–96	749	896	108594	121	8.3	1.2	79.51
1996–97	615	866	138899	160	6.2	1.4	147.80
1997–98	619	1234	255147	207	4.8	2.0	60.89
1998–99	1031	2092	633774	303	3.3	2.0	55.86
1999–00	828	1430	238152	167	6.0	1.7	82.64
.2000–01	852	2008	399609	199	5.0	2.4	93.56
2001–02	666	1866	342678	184	5.4	2.8	147.66
2002–03	984	2176	593692	273	3.7	2.2	270.33
2003–04	1133	2027	701383	346	2.9	1.8	203.17
2004–05	1300	1954	462019	236	4.2	1.5	221.65
2005–06	979	2625	757380	289	3.5	2.7	358.56
2006–07	1017	3037	877870	289	3.5	3.0	197.53
2007–08	985	2091	836519	400	2.5	2.1	388.43
2008–09	1630	1796	1258813	701	1.4	1.1	238.69
2009–10	717	1017	488709	481	2.1	1.4	223.71
2010–11	771	846	416474	492	2.0	1.1	368.95
2011–12	755	1094	437912	400	2.5	1.4	456.16
2012–13	836	1214	475902	392	2.6	1.5	560.96
2013–14	953	1690	562430	333	3.0	1.8	407.44
2014–15	1105	2776	1036043	373	2.7	2.5	223.11
2015–16	982	1543	739720	479	2.1	1.6	151.63
2016–17	571	1657	402966	243	4.1	2.9	273.23
2017–18	957	2683	833255	311	3.2	2.8	236.45
2018–19	796	1372	611330	446	2.2	1.7	388.43
2019–20	701	1007	553322	550	1.8	1.4	264.14
2020–21	762	833	454600	546	1.8	1.1	—

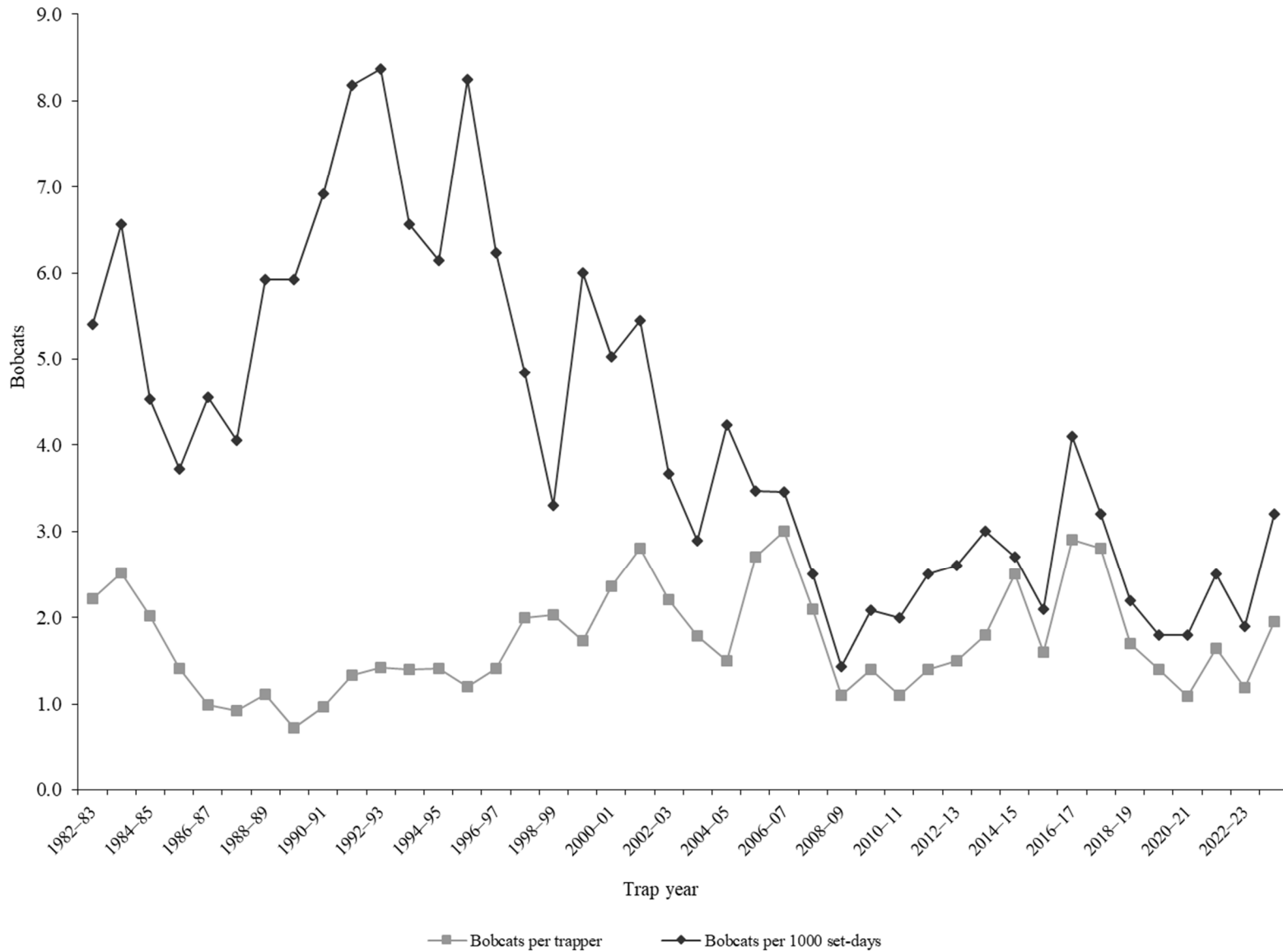
Statewide bobcat trapping harvest statistics, Utah 1982–2024 (continued).

Trap year	Trappers afield	Trap harvest	Set-days	Set-days / bobcat	Bobcats / 1000 set-days	Bobcats / trapper	Pelt price (\$)
2021–22	498	815	329996	405	2.5	1.6	415.16
2022–23	504	599	323667	540	1.9	1.2	376.22
2023–24	531	1038	320496	309	3.2	2.0	359.21
Average	893	1540	451579	298	4.2	1.7	228.21

Statewide bobcat hunting harvest statistics, Utah 2005–2024.

Trap year	Hunters afield	Hunt harvest	Hunter-days afield	Hunter-days / bobcat	Bobcats / hunter
2005–06	612	301	8194	27	0.5
2006–07	440	340	10408	31	0.8
2007–08	557	346	10089	29	0.6
2008–09	438	266	7360	28	0.6
2009–10	370	150	5253	35	0.4
2010–11	355	156	5888	38	0.4
2011–12	329	151	4146	28	0.5
2012–13	206	151	2739	18	0.7
2013–14	182	180	2901	16	1.0
2014–15	305	143	4203	29	0.5
2015–16	298	140	3819	27	0.5
2016–17	267	199	3446	17	0.7
2017–18	341	262	4620	18	0.8
2018–19	211	280	2832	10	1.3
2019–20	243	166	3330	20	0.7
2020–21	242	178	2970	17	0.7
2021–22	208	150	2314	15	0.7
2022–23	167	252	2955	12	1.5
2023–24	140	229	2431	11	1.6
Average	311	213	4731	22	0.8

Statewide bobcat trapping harvest trends, Utah 1982–2024.



Bobcat trapping harvest statistics by county and ecoregion, Utah 2023–24.

County	n	Trappers afield	Trap harvest**	Traps set	Trapping days	Set-days	Set-days / bobcat	Bobcats / 1000 set-days	Bobcats / trapper
Beaver	1	4	72	255	43	2550	35.4	28.2	18.0
Box Elder	5	21	58	1012	468	20301	350.0	2.9	2.8
Iron	8	34	46	1866	697	43578	947.3	1.1	1.4
Juab	9	38	84	1780	371	19063	226.9	4.4	2.2
Millard	9	38	36	1518	370	11558	321.1	3.1	0.9
Tooele	9	38	28	965	204	14237	508.5	2.0	0.7
Great Basin totals	41	174	324	7395	2152	111288	343.5	2.9	1.9
Cache	3	13	3	217	21	1275	425.0	2.4	0.2
Davis	1	4	0	128	21	638	—	0.0	0.0
Morgan	2	9	7	412	106	6036	862.3	1.2	0.8
Piute	3	13	11	225	102	1989	180.8	5.5	0.8
Rich	3	13	31	765	204	10329	333.2	3.0	2.4
Salt Lake	0	0	6	—	—	—	—	—	—
Sanpete	8	34	31	1730	459	22478	725.1	1.4	0.9
Sevier	16	68	89	2793	1258	68030	764.4	1.3	1.3
Summit	5	21	15	565	89	4310	287.3	3.5	0.7
Utah	12	51	31	1458	400	15787	509.3	2.0	0.6
Wasatch	4	17	9	714	157	8769	974.3	1.0	0.5
Weber	1	4	3	128	17	510	170.0	5.9	0.8
Rocky Mountain totals	58	247	236	9135	2835	140151	593.9	1.7	1.0
Daggett	1	4	6	298	13	893	148.8	6.7	1.5
Duchesne	5	21	31	846	115	5279	170.3	5.9	1.5
Uintah	3	13	50	298	128	4030	80.6	12.4	3.8
Uintah Basin totals	9	38	87	1441	255	10202	117.3	8.5	2.3
Carbon	7	30	36	961	306	14894	413.7	2.4	1.2
Emery	9	38	37	1543	242	16688	451.0	2.2	1.0
Garfield	3	13	54	145	106	969	17.9	55.7	4.2
Grand	0	0	34	—	—	—	—	—	—
Kane	5	21	55	400	196	3549	64.5	15.5	2.6
San Juan	5	21	91	760	166	9187	101.0	9.9	4.3
Washington	7	30	71	948	387	12428	175.0	5.7	2.4
Wayne	2	9	13	145	72	1139	87.6	11.4	1.4
Colorado Plateau totals	38	162	391	4900	1475	58855	150.5	6.6	2.4
Unknown	3	13	0	13	47	38	—	0.0	0.0
Statewide totals*	125	531	1038	22871	6718	320496	308.8	3.2	2.0

*Statewide totals for sample size and trappers afield are not totals of the columns because trappers trapped multiple counties.

**Total harvest numbers are from pelt check-in, while numbers of trappers afield and effort are determined from harvest survey.

Bobcat hunting harvest statistics by county and ecoregion, Utah 2023–24.

County	n	Hunters afield	Hunt harvest**	Hunter-days afield	Hunter-days / bobcat	Bobcats / hunter
Beaver	0	0	1	0	0.0	—
Box Elder	3	13	8	234	29.3	0.6
Iron	2	9	3	391	130.3	0.3
Juab	2	9	14	213	15.2	1.6
Millard	2	9	8	204	25.5	0.9
Tooele	1	4	9	21	2.3	2.3
Great Basin totals	10	43	43	1063	24.7	1.0
Cache	2	9	10	47	4.7	1.1
Davis	0	0	—	—	—	—
Morgan	2	9	17	234	13.8	1.9
Piute	0	0	4	—	—	—
Rich	0	0	9	—	—	—
Salt Lake	1	4	0	13	—	0.0
Sanpete	2	9	17	51	3.0	1.9
Sevier	1	4	5	17	3.4	1.3
Summit	4	17	9	319	35.4	0.5
Utah	2	9	18	64	3.6	2.0
Wasatch	2	9	19	26	1.4	2.1
Weber	1	4	4	43	10.8	1.0
Rocky Mountain totals	17	72	112	814	7.3	1.6
Daggett	2	9	10	111	11.1	1.1
Duchesne	2	9	6	17	2.8	0.7
Uintah	5	21	22	204	9.3	1.0
Uintah Basin totals	9	38	38	332	8.7	1.0
Carbon	2	9	9	47	5.2	1.0
Emery	1	4	3	4	1.3	0.8
Garfield	3	13	8	34	4.3	0.6
Grand	1	4	8	43	5.4	2.0
Kane	1	4	2	13	6.5	0.5
San Juan	2	9	4	55	13.8	0.4
Washington	1	4	1	4	4.0	0.3
Wayne	1	4	1	9	9.0	0.3
Colorado Plateau totals	12	51	36	209	5.8	0.7
Unknown	1	4	0	17	—	0.0
Statewide totals*	33	140	229	2431	10.6	1.6

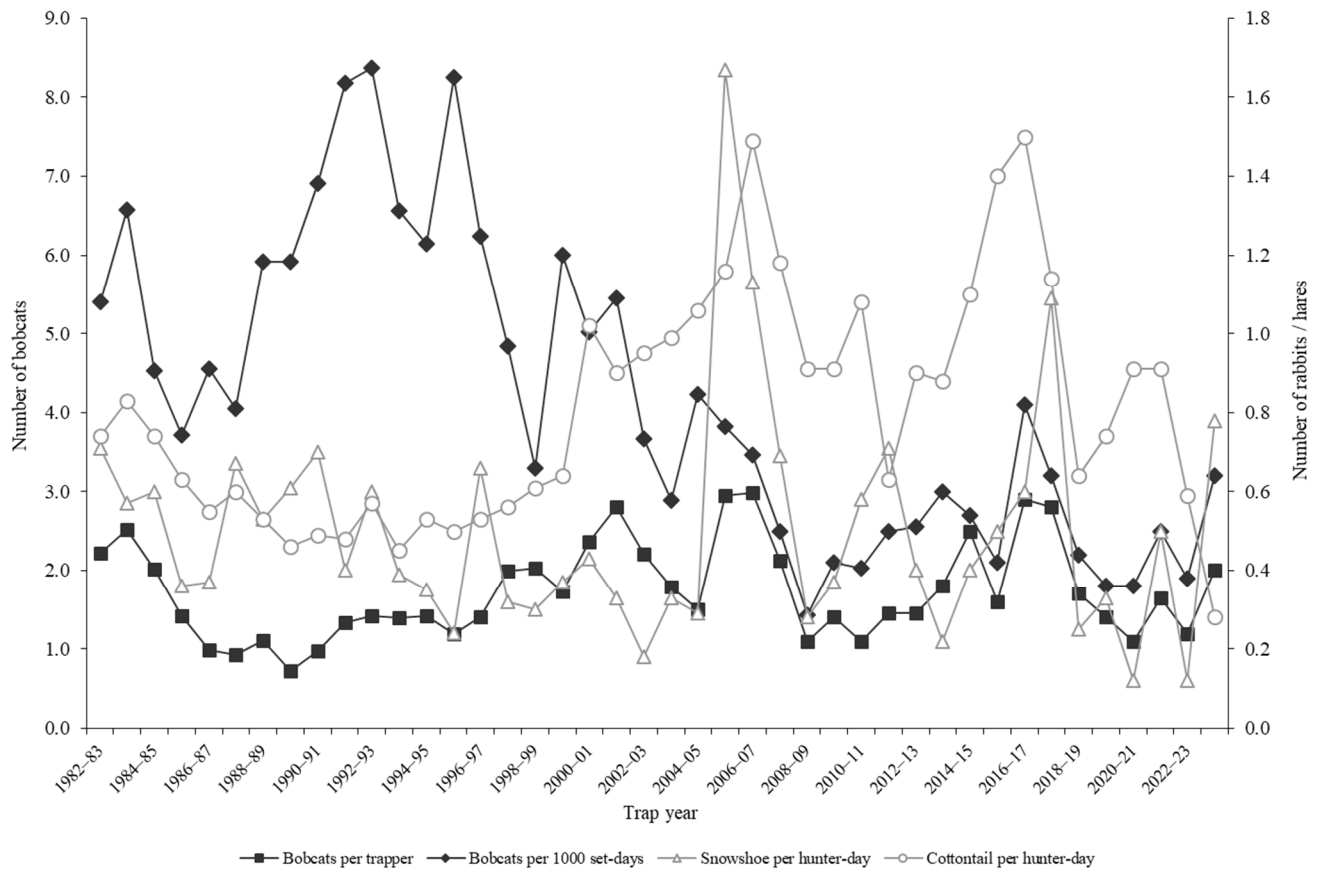
*Statewide totals for sample size and hunters afield are not totals of the columns because hunters hunted multiple counties.

**Total harvest numbers are from pelt check-in, while numbers of hunters afield and effort are determined from harvest survey.

Prey index

Lagomorph densities are generally considered a good indicator of bobcat recruitment and survival because high lagomorph populations provide an essential prey base for dispersing bobcats. When lagomorph populations are high or increasing, the bobcat population has also increased or at least remained stable. Thus, low populations of lagomorphs will reduce the likelihood of younger bobcats surviving to the next year. Cottontail rabbit and snowshoe hare data were from the Utah Upland Game Annual Report 2023–24 (2023–24 upland game seasons).

Relationships in harvest statistics between bobcat and prey, Utah 1982–2024.



Bobcat harvest age and sex ratios, Utah 1985–2024.

Trap year	Kittens / adult female	Kittens / adult	Male kittens / female kittens	Juveniles / adult	Juv. males / juv. females	Proportion juveniles in harvest	Proportion females in harvest	Males / females
1985–86	0.5	0.2	1.0	—	—	—	—	1.2
1986–87	0.7	0.3	0.9	—	—	—	—	1.1
1987–88	1.2	0.5	1.0	—	—	—	—	1.1
1988–89	1.1	0.4	1.1	—	—	—	—	1.3
1989–90	0.8	0.3	1.0	—	—	—	—	1.4
1990–91	0.8	0.3	0.6	—	—	—	—	1.2
1991–92	0.9	0.7	1.3	—	—	—	—	1.5
1992–93	0.9	1.0	1.2	—	—	—	—	1.4
1993–94	1.6	0.6	1.0	—	—	—	—	1.3
1994–95	0.6	0.6	1.1	0.6	1.1	0.36	0.44	1.3
1995–96	1.4	0.5	0.7	0.5	1.0	0.35	0.44	1.3
1996–97	1.9	0.7	1.1	0.7	1.1	0.41	0.41	1.4
1997–98	1.2	0.4	0.9	0.4	0.9	0.30	0.42	1.4
1998–99	2.1	0.8	1.1	—	—	—	—	1.3
1999–00	0.8	0.3	1.0	1.0	1.4	0.50	0.39	1.6
2000–01	0.7	0.3	1.1	0.9	1.3	0.47	0.39	1.6
2001–02	0.4	0.2	1.0	0.6	1.2	0.38	0.41	1.4
2002–03	0.4	0.2	0.9	0.4	1.0	0.28	0.45	1.2
2003–04	0.6	0.3	0.9	0.5	1.0	0.31	0.47	1.1
2004–05	0.8	0.3	0.8	1.2	1.1	0.55	0.44	1.3
2005–06	5.8	2.5	1.4	2.5	1.4	0.72	0.43	1.4
2006–07	4.1	1.5	1.4	1.5	1.4	0.60	0.43	1.3
2007–08	3.0	1.3	1.1	1.4	1.1	0.56	0.43	1.3
2008–09	0.4	0.2	0.8	0.7	1.0	0.42	0.45	1.2
2009–10	0.7	0.3	1.0	0.6	1.2	0.38	0.47	1.1
2010–11	0.6	0.2	1.1	0.5	1.2	0.31	0.43	1.4
2011–12	0.8	0.3	1.1	0.5	1.2	0.35	0.45	1.2
2012–13	0.6	0.3	0.9	0.5	0.9	0.35	0.48	1.1
2013–14	0.9	0.4	0.9	0.8	0.9	0.46	0.45	1.2
2014–15	1.6	0.8	1.0	1.5	1.2	0.60	0.45	1.2
2015–16	1.4	0.6	0.9	1.6	1.4	0.62	0.44	1.3
2016–17	1.4	0.6	0.9	1.8	1.3	0.64	0.41	1.5
2017–18	0.7	0.3	0.7	1.1	1.1	0.52	0.45	1.2
2018–19	0.2	0.1	0.9	0.6	1.2	0.36	0.48	1.1
2019–20	0.4	0.2	0.9	0.4	0.9	0.28	0.44	1.3
2020–21	1.0	0.4	0.5	0.7	0.7	0.42	0.46	1.2

In annual reports prior to 2005–06, the "juvenile" age category referred only to kittens (age 0.5) while "adults" included all bobcats age 1.5 and older. Beginning with the 2005–06 annual report, the term "juvenile" now refers to kittens and yearlings (ages 0.5–1.5), while "adult" includes all bobcats age 2.5 and older.

Bobcat harvest age and sex ratios, Utah 1985–2024 (continued).

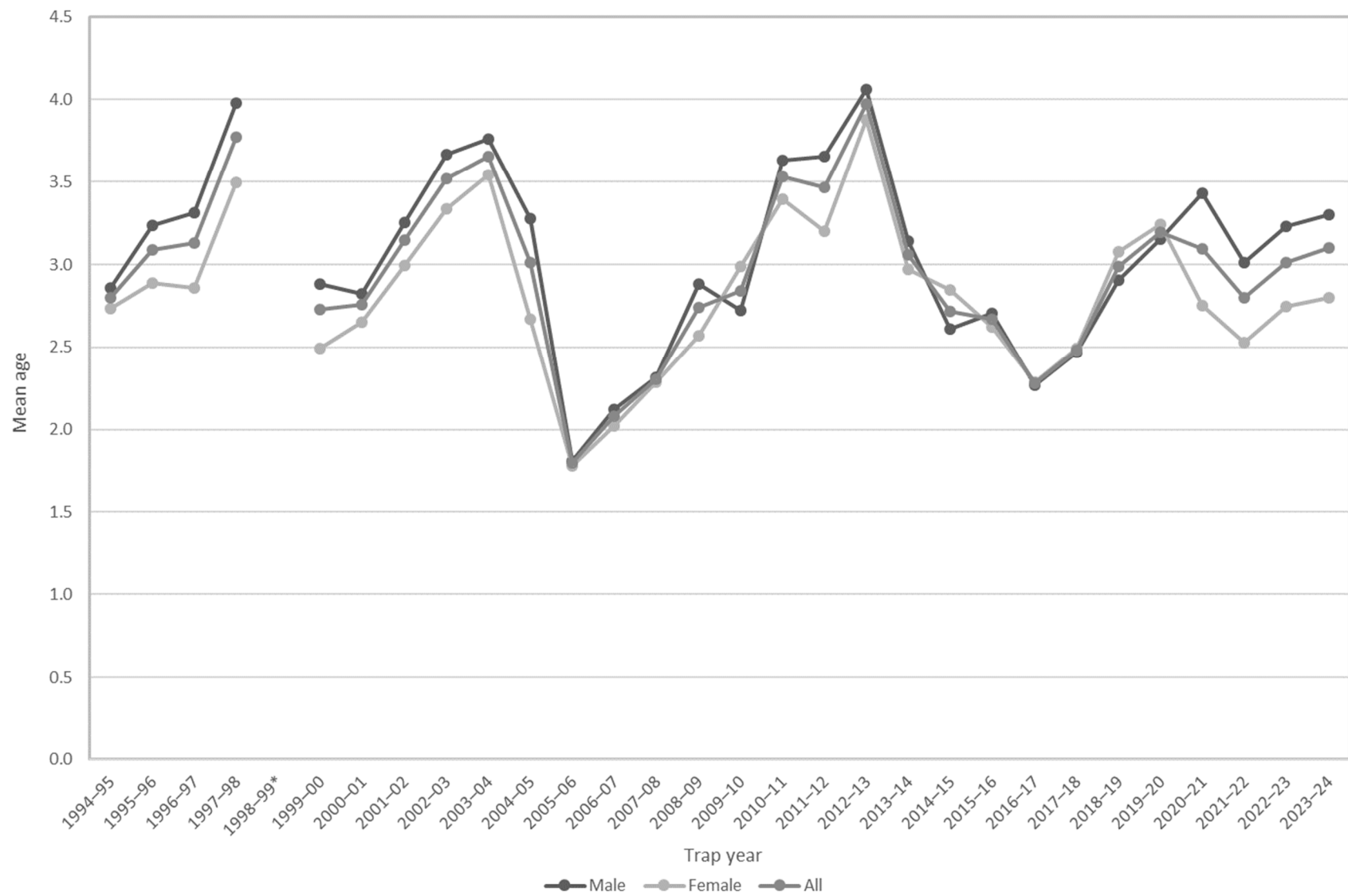
Trap year	Kittens / adult female	Kittens / adult	Male kittens / female kittens	Juveniles / adult	Juv. males / juv. females	Proportion juveniles in harvest	Proportion females in harvest	Males / females
2021–22	0.9	0.3	0.8	1.3	1.2	0.56	0.49	1.0
2022–23	1.0	0.4	1.2	0.7	1.1	0.42	0.46	1.2
2023–24	0.4	0.2	0.5	0.9	1.1	0.48	0.45	1.2
Average	1.2	0.5	1.0	0.9	1.1	0.45	0.44	1.3

In annual reports prior to 2005–06, the "juvenile" age category referred only to kittens (age 0.5) while "adults" included all bobcats age 1.5 and older. Beginning with the 2005–06 annual report, the term "juvenile" now refers to kittens and yearlings (ages 0.5–1.5), while "adult" includes all bobcats age 2.5 and older.

Adult bobcat survival (from Chapman-Robson estimator), Utah 1985–2024.

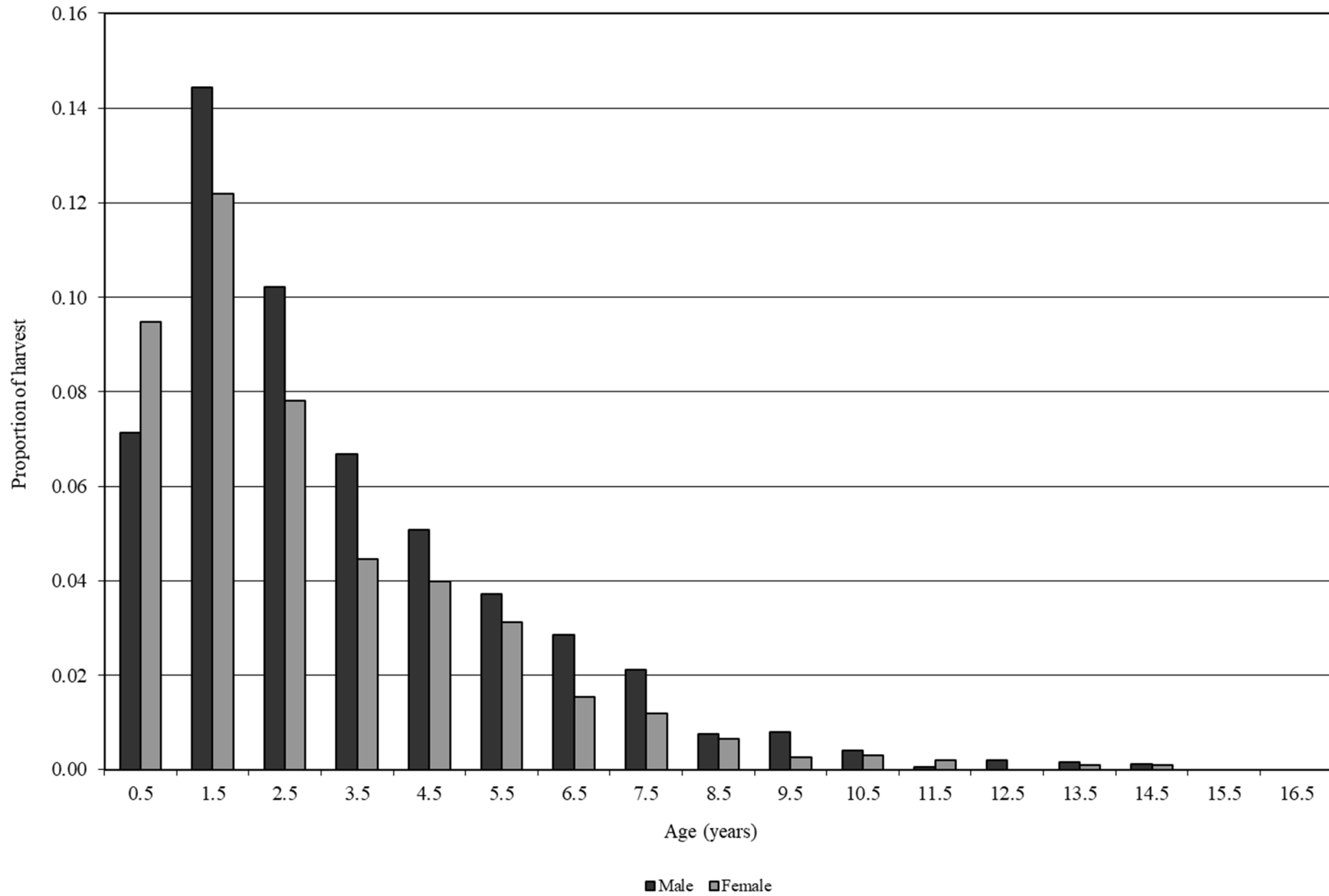
Trap year	Survival (%)	95% confidence interval	Chi-square value, degrees of freedom
1985–86	63	60–65	13.2, 9df
1986–87	63	60–65	34.1, 9df
1987–88	65	61–68	19.9, 9df
1988–89	64	60–68	17.3, 8df
1989–90	67	63–71	19.4, 8df
1990–91	58	53–62	28.5, 12df
1991–92	58	55–60	47.9, 14df
1992–93	59	56–63	19.9, 12df
1993–94	54	52–57	34.2, 11df
1994–95	57	54–59	17.2, 14df
1995–96	64	61–66	40.0, 11df
1996–97	68	65–70	23.4, 12df
1997–98	71	69–74	19.1, 14df
1998–99	71	70–73	35.2, 13df
1999–00	66	64–68	41.0, 15df
2000–01	64	62–66	86.0, 11df
2001–02	65	63–67	87.3, 14df
2002–03	67	65–68	175.5, 13df
2003–04	71	70–72	245.6, 12df
2004–05	74	73–76	83.9, 15df
2005–06	68	65–70	15.7, 12df
2006–07	53	48–58	41.9, 9df
2007–08	58	54–62	63.6, 12df
2008–09	57	54–61	64.5, 14df
2009–10	59	56–62	60.1, 12df
2010–11	69	66–71	90.0, 13df
2011–12	70	66–73	22.7, 13df
2012–13	75	72–78	87.2, 11df
2013–14	70	66–74	52.8, 12df
2014–15	74	71–77	62.2, 13df
2015–16	73	70–76	66.6, 13df
2016–17	65	61–68	93.1, 10df
2017–18	57	53–61	89.8, 11df
2018–19	59	55–63	42.8, 12df
2019–20	60	57–64	16.4, 11df
2020–21	68	65–72	52.9, 12df
2021–22	70	66–74	46.9, 7df
2022–23	67	63–71	41.9, 12df
2023–24	70	66–73	31.9, 11df
Average	65	—	—

Average age of harvested bobcats, Utah 1994–2024.



*Excludes age structure data from the 1998–99 trap season.

5-yr age structure of harvested bobcats, Utah 2019–2024.



COYOTE

Statewide coyote harvest statistics, Utah 1982–2024.

Trap year	Trappers / hunters afield	Wildlife Services harvest	Incidental harvest	Trap harvest	Hunt harvest	Coyotes per trapper / hunter*	Pelt price (\$)
1982–83	841	4130	—	5738	—	6.8	35.42
1983–84	715	5063	—	5878	—	8.2	25.92
1984–85	828	5427	—	5991	—	7.2	32.35
1985–86	714	5045	—	4851	—	6.8	19.65
1986–87	819	4116	—	4947	—	6.0	33.64
1987–88	893	4338	—	6919	—	7.7	15.55
1988–89	652	4853	—	3200	—	4.9	8.47
1989–90	671	5168	—	3331	—	5.0	8.68
1990–91	389	4444	—	1831	—	4.7	11.41
1991–92	664	4347	—	3255	—	4.9	20.00
1992–93	695	4932	—	3666	—	5.3	15.75
1993–94	679	5827	—	5247	—	7.7	24.58
1994–95	754	3893	—	5267	—	7.0	12.51
1995–96	632	4165	—	4372	—	6.9	15.49
1996–97	405	4484	—	4017	—	9.9	18.73
1997–98	494	4169	—	3228	—	6.5	10.80
1998–99	782	3464	—	4337	—	5.5	10.80
1999–00	473	4534	—	3510	—	7.4	19.14
2000–01	456	4275	—	4966	—	10.9	14.39
2001–02	399	3874	—	4354	—	10.9	16.17
2002–03	572	3394	—	5446	—	9.5	32.62
2003–04	699	3897	—	6660	—	9.5	25.74
2004–05	699	4125	—	7173	—	10.3	20.10
2005–06	630	4820	328	1190	3039	6.7	30.45
2006–07	830	5041	—	—	—	—	26.37
2007–08	859	5618	821	4055	3582	8.9	21.74
2008–09	726	3909	1020	3963	2982	9.6	10.86
2009–10	781	3808	531	3188	2955	7.9	14.80
2010–11	736	4081	292	4356	3480	10.6	25.00
2011–12	705	3444	374	3054	1868	7.0	43.43
2012–13	881	3349	192	3269	2288	6.3	39.56
2013–14	864	2605	312	3162	2310	6.3	37.39
2014–15	971	3099	424	4118	2331	6.6	45.88
2015–16	977	3961	166	4801	3034	8.0	29.63
2016–17	607	3473	285	2244	2595	8.0	37.26
2017–18	635	3024	164	2584	2511	8.0	37.31
2018–19	493	3911	226	1728	1636	6.8	56.31
2019–20	531	3839	126	1793	1565	6.3	76.66
2020–21	828	3871	270	3076	3004	7.3	—

*Coyotes per trapper / hunter does not include Wildlife Services harvest.

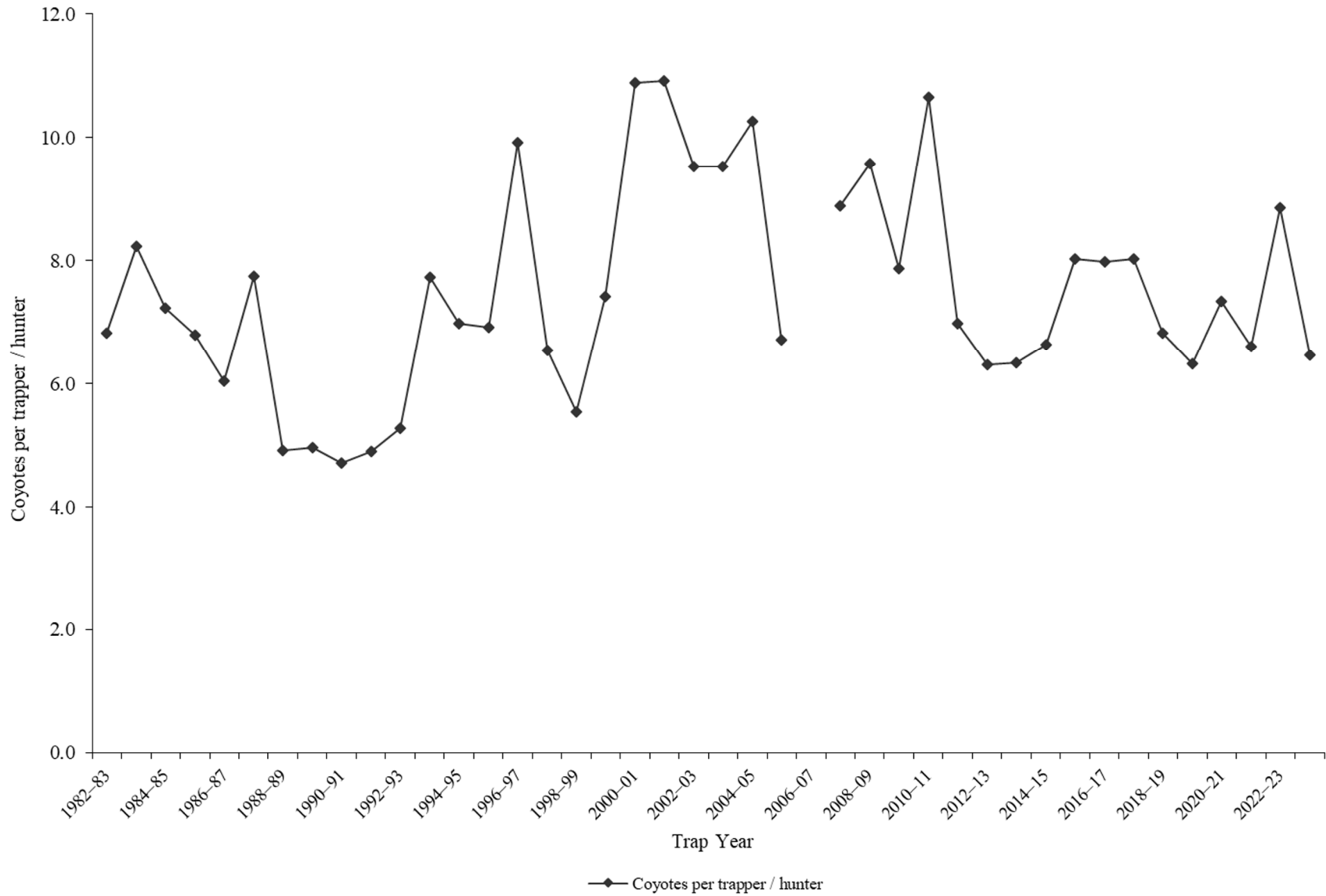
Statewide coyote harvest statistics, Utah 1982–2024 (continued).

Trap year	Trappers / hunters afield	Wildlife Services / UDAF^ harvest	Incidental harvest	Trap harvest	Hunt harvest	Coyotes per trapper / hunter*	Pelt price (\$)
2021–22	512	3177	393	1949	1432	6.6	26.57
2022–23	481	3852	262	2201	2054	8.8	11.97
2023–24	432	3830	224	1372	1417	6.5	19.93
Average	676	4159	356	3909	2449	7.5	25.34

*Coyotes per trapper / hunter does not include Wildlife Services harvest.

^*Utah Department of Agriculture (UDAF) replaced Wildlife Services in 2023.

Statewide coyote harvest trends, Utah 1982–2024.



Coyote trapping harvest statistics by county and ecoregion, Utah 2023–24.

County	n	Trappers afield	Trap harvest	Traps Set	Trapping days	Set-days	Set-days / coyote	Coyotes / 1000 set-days	Coyotes / trapper
Beaver	3	11	148	235	485	10702	72.4	13.8	13.0
Box Elder	3	11	110	129	360	6120	55.7	18.0	9.7
Iron	6	23	91	352	497	10213	112.3	8.9	4.0
Juab	6	23	34	261	1307	15566	456.4	2.2	1.5
Millard	6	23	129	258	1194	18580	144.2	6.9	5.7
Tooele	5	19	30	208	625	5628	185.6	5.4	1.6
Great Basin totals	29	110	542	1444	4469	66809	123.3	8.1	4.9
Cache	3	11	136	83	493	5684	41.7	24.0	12.0
Davis	1	4	4	19	114	568	150.0	6.7	1.0
Morgan	2	8	15	72	95	796	52.5	19.0	2.0
Piute	1	4	4	15	53	212	56.0	17.9	1.0
Rich	2	8	91	136	709	15166	166.8	6.0	12.0
Salt Lake	0	0	—	—	—	—	—	—	—
Sanpete	7	27	30	197	1254	11846	390.8	2.6	1.1
Sevier	7	27	38	318	989	13529	357.0	2.8	1.4
Summit	2	8	11	61	243	2789	245.3	4.1	1.5
Utah	9	34	49	261	1467	11968	242.9	4.1	1.4
Wasatch	1	4	8	19	30	152	20.0	50.0	2.0
Weber	3	11	27	129	368	4525	170.6	5.9	2.3
Rocky Mountain totals	38	144	413	1311	5813	67235	162.8	6.1	2.9
Daggett	0	0	—	—	—	—	—	—	—
Duchesne	6	23	83	394	800	15306	183.6	5.4	3.7
Uintah	2	8	30	68	208	2160	71.3	14.0	4.0
Uintah Basin totals	8	30	113	462	1008	17466	153.6	6.5	3.8
Carbon	4	15	15	53	330	2097	138.3	7.2	1.0
Emery	4	15	27	91	618	4153	156.6	6.4	1.8
Garfield	2	8	4	49	212	1357	358.0	2.8	0.5
Grand	1	4	0	0	227	0	—	—	0.0
Kane	1	4	4	11	23	68	18.0	55.6	1.0
San Juan	3	11	159	250	1080	49568	311.4	3.2	14.0
Washington	4	15	53	186	477	6583	124.1	8.1	3.5
Wayne	1	4	8	38	53	531	70.0	14.3	2.0
Colorado Plateau totals	20	76	270	678	3020	64356	239.2	4.2	3.6
Unknown	1	4	34	4	106	106	3.1	321.4	9.0
Statewide totals*	78	296	1372	3900	14417	215973	157.4	6.4	4.6

*Statewide totals for sample size and trappers afield are not totals of the columns because trappers trapped multiple counties.

Coyote hunting harvest statistics by county and ecoregion, Utah 2023–24.

County	n	Hunters afield	Hunt harvest	Hunter-days afield	Hunter-days / coyote	Coyotes / hunter
Beaver	3	11	45	311	6.8	4.0
Box Elder	6	23	193	491	2.5	8.5
Iron	6	23	106	174	1.6	4.7
Juab	6	23	19	197	10.4	0.8
Millard	5	19	99	538	5.5	5.2
Tooele	5	19	23	95	4.2	1.2
Great Basin totals	31	117	485	1806	3.7	4.1
Cache	3	11	68	114	1.7	6.0
Davis	0	0	—	—	—	—
Morgan	1	4	8	57	7.5	2.0
Piute	1	4	4	30	8.0	1.0
Rich	2	8	99	136	1.4	13.0
Salt Lake	1	4	23	15	0.7	6.0
Sanpete	6	23	53	224	4.2	2.3
Sevier	2	8	4	216	57.0	0.5
Summit	0	0				
Utah	6	23	136	208	1.5	6.0
Wasatch	3	11	34	95	2.8	3.0
Weber	2	8	11	117	10.3	1.5
Rocky Mountain totals	27	102	440	1213	2.8	4.3
Daggett	2	8	76	1160	15.3	10.0
Duchesne	5	19	23	148	6.5	1.2
Uintah	9	34	152	675	4.5	4.4
Uintah Basin totals	16	61	250	1982	7.9	4.1
Carbon	3	11	19	121	6.4	1.7
Emery	4	15	57	591	10.4	3.8
Garfield	2	8	4	76	20.0	0.5
Grand	2	8	0	19	—	0.0
Kane	2	8	0	95	—	0.0
San Juan	2	8	114	682	6.0	15.0
Washington	3	11	15	117	7.8	1.3
Wayne	2	8	8	34	4.5	1.0
Colorado Plateau totals	20	76	216	1736	8.0	2.9
Unknown	2	8	27	30	1.1	3.5
Statewide totals*	63	239	1417	6767	4.8	5.9

*Statewide totals for sample size and hunters afield are not totals of the columns because hunters hunted multiple counties.

GRAY FOX

Statewide gray fox harvest statistics*, Utah 1982–2024.

Trap year	Trappers afield	Incidental harvest	Trap harvest	Hunt harvest	Set-days / fox	Foxes / 1000 set-days	Foxes / trapper	Pelt price (\$)
1982–83	263	—	1346	—	145	6.9	5.1	27.75
1983–84	233	—	1367	—	119	8.4	5.9	25.13
1984–85	305	—	1954	—	128	7.8	6.4	24.64
1985–86	256	—	1407	—	128	7.8	5.5	15.03
1986–87	252	—	1457	—	92	10.8	5.8	25.29
1987–88	273	—	1633	—	75	13.4	6.0	21.91
1988–89	226	—	1099	—	82	12.2	4.9	13.50
1989–90	233	—	941	—	68	14.8	4.0	6.19
1990–91	65	—	250	—	99	10.1	3.8	8.24
1991–92	110	—	402	—	98	10.2	3.7	6.87
1992–93	214	—	422	—	88	11.4	2.0	7.08
1993–94	136	—	687	—	53	18.8	5.1	12.00
1994–95	207	—	771	—	51	19.8	3.7	9.62
1995–96	147	—	828	—	44	22.8	5.6	10.65
1996–97	102	—	367	—	46	21.7	3.6	11.60
1997–98	87	—	389	—	68	14.7	4.5	7.76
1998–99	135	—	870	—	96	10.4	6.4	6.96
1999–00	140	—	925	—	58	17.1	6.6	6.62
2000–01	187	—	1159	—	101	9.9	6.2	8.00
2001–02	154	—	1326	—	98	10.2	8.6	11.58
2002–03	299	—	1942	—	116	8.6	6.5	12.47
2003–04	265	—	1749	—	128	7.8	6.6	10.84
2004–05	203	—	942	—	100	10.0	4.6	13.81
2005–06	98	—	603	—	85	11.8	6.2	24.15
2006–07	252	—	—	—	—	—	—	37.25
2007–08	217	—	1093	—	127	7.9	5.0	39.19
2008–09	238	—	1747	—	110	9.1	7.3	17.07
2009–10	163	361	1031	—	126	7.9	6.3	16.56
2010–11	138	292	651	—	90	11.1	4.7	20.97
2011–12	125	485	474	43	124	8.1	4.1	23.13
2012–13	130	216	1069	3	77	13.1	8.2	31.15
2013–14	172	462	843	13	155	6.4	5.0	24.18
2014–15	123	525	490	0	249	4.0	4.0	16.16
2015–16	151	450	623	33	299	3.3	4.3	10.75
2016–17	84	267	356	3	150	6.7	4.3	15.42
2017–18	101	389	664	14	52	19.3	6.7	8.98
2018–19	89	328	330	11	151	6.6	3.8	12.36
2019–20	56	264	163	2	171	5.9	2.9	16.22
2020–21	65	394	358	3	115	8.7	5.6	—

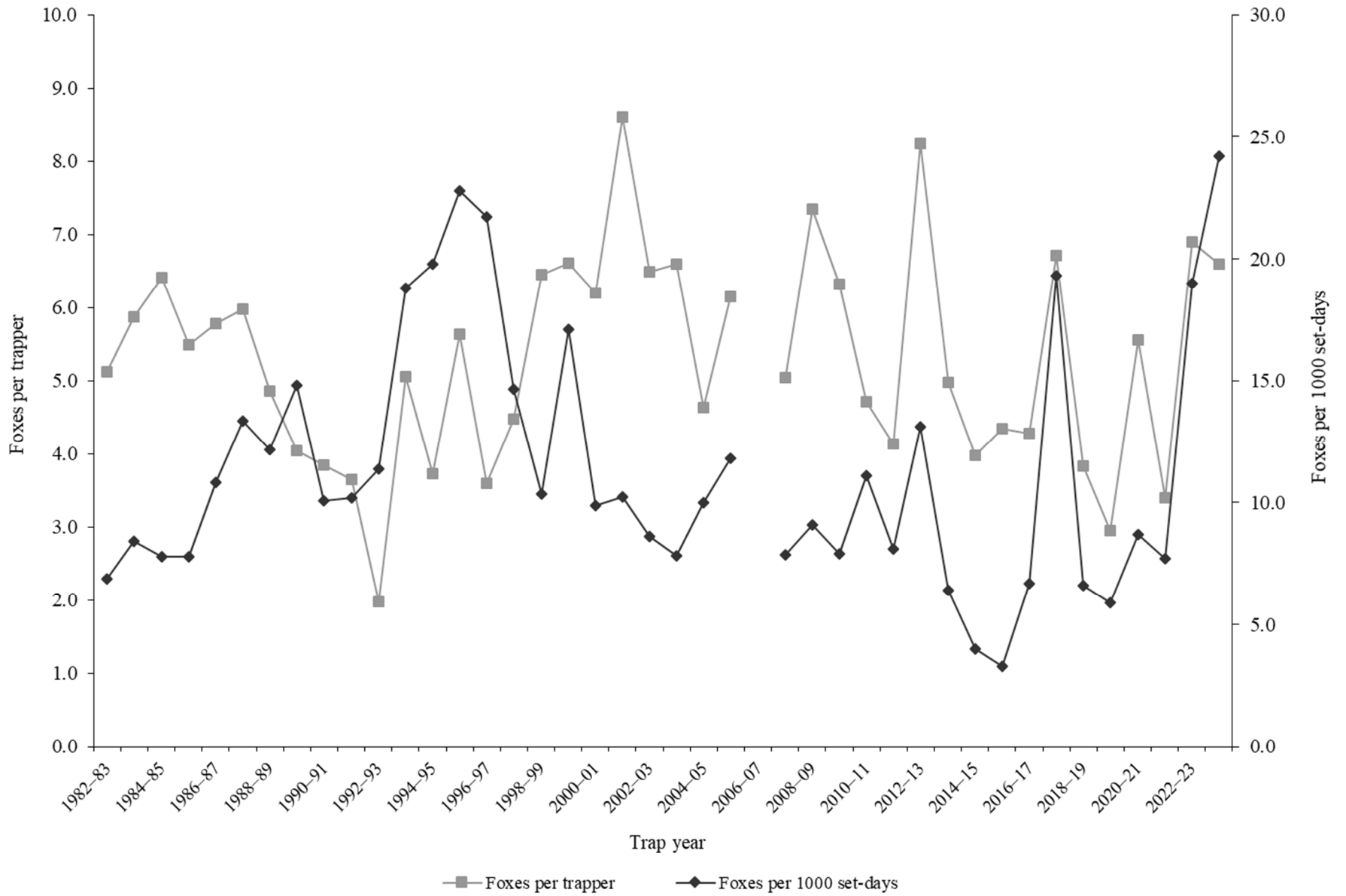
*Trappers and foxes per trapper include hunters and their harvest. Set-days per fox and foxes per 1000 set-days are based only on trapping activity, and do not include hunt harvest or hunter-days afield.

Statewide gray fox harvest statistics*, Utah 1982–2024 (continued).

Trap year	Trappers afield	Incidental harvest	Trap harvest	Hunt harvest	Set-days / fox	Foxes / 1000 set-days	Foxes / trapper	Pelt price (\$)
2021–22	57	296	186	12	130	7.7	3.4	15.27
2022–23	50	256	347	0	53	19.0	6.9	15.02
2023–24	72	288	250	64	41	24.2	6.6	20.70
Average	164	352	866	15	107	11.4	5.3	16.29

*Trappers and foxes per trapper include hunters and their harvest. Set-days per fox and foxes per 1000 set-days are based only on trapping activity, and do not include hunt harvest or hunter-days afield.

Statewide gray fox harvest trends, Utah 1982–2024.



KIT FOX

Statewide kit fox harvest statistics*, Utah 1982–2024.

Trap year	Trappers afield	Incidental harvest	Trap harvest	Hunt harvest	Set-days / fox	Foxes / 1000 set-days	Foxes / trapper	Pelt price (\$)
1982–83	109	—	363	—	267	3.7	3.3	11.39
1983–84	112	—	698	—	171	5.8	6.2	11.99
1984–85	142	—	651	—	178	5.6	4.6	11.17
1985–86	108	—	609	—	90	11.1	5.6	7.50
1986–87	122	—	547	—	73	13.7	4.5	9.90
1987–88	138	—	538	—	61	16.5	3.9	10.69
1988–89	130	—	643	—	55	18.1	4.9	6.98
1989–90	117	—	365	—	60	16.6	3.1	3.19
1990–91	81	—	186	—	26	38.6	2.3	4.67
1991–92	86	—	187	—	53	18.9	2.2	2.78
1992–93	41	—	191	—	39	25.9	4.7	4.30
1993–94	75	—	301	—	25	40.6	4.0	4.69
1994–95	109	—	531	—	19	51.6	4.9	6.45
1995–96	77	—	218	—	45	22.2	2.8	6.25
1996–97	44	—	162	—	16	62.5	3.7	6.77
1997–98	41	—	96	—	282	3.5	2.3	3.50
1998–99	75	—	168	—	128	7.8	2.2	7.31
1999–00	66	—	183	—	114	8.8	2.8	2.90
2000–01	51	—	161	—	227	4.4	3.2	6.13
2001–02	52	—	171	—	229	4.4	3.3	10.72
2002–03	90	—	302	—	221	4.5	3.4	5.44
2003–04	83	—	638	—	97	10.4	7.7	5.38
2004–05	89	—	259	—	191	5.2	2.9	8.98
2005–06	40	—	183	—	15	65.6	4.6	10.92
2006–07	65	—	—	—	—	—	—	10.50
2007–08	27	—	39	—	392	2.6	1.4	7.87
2008–09	48	—	104	—	314	3.2	2.2	7.61
2009–10	19	13	38	—	177	5.6	2.0	9.47
2010–11	20	3	42	—	41	24.2	2.1	12.68
2011–12	18	64	0	46	—	0.0	2.6	14.49
2012–13	31	41	315	17	80	12.6	10.7	14.37
2013–14	10	7	7	0	515	1.9	0.7	14.32
2014–15	22	47	95	3	90	11.2	4.5	7.13
2015–16	29	18	37	44	296	3.4	2.8	6.54
2016–17	13	31	123	0	20	49.7	9.5	10.32
2017–18	2	30	14	0	58	17.2	7.0	6.60
2018–19	7	13	0	0	—	0.0	0.0	8.91
2019–20	12	25	74	4	28	35.7	6.5	15.15
2020–21	3	52	10	0	47	21.4	3.3	—

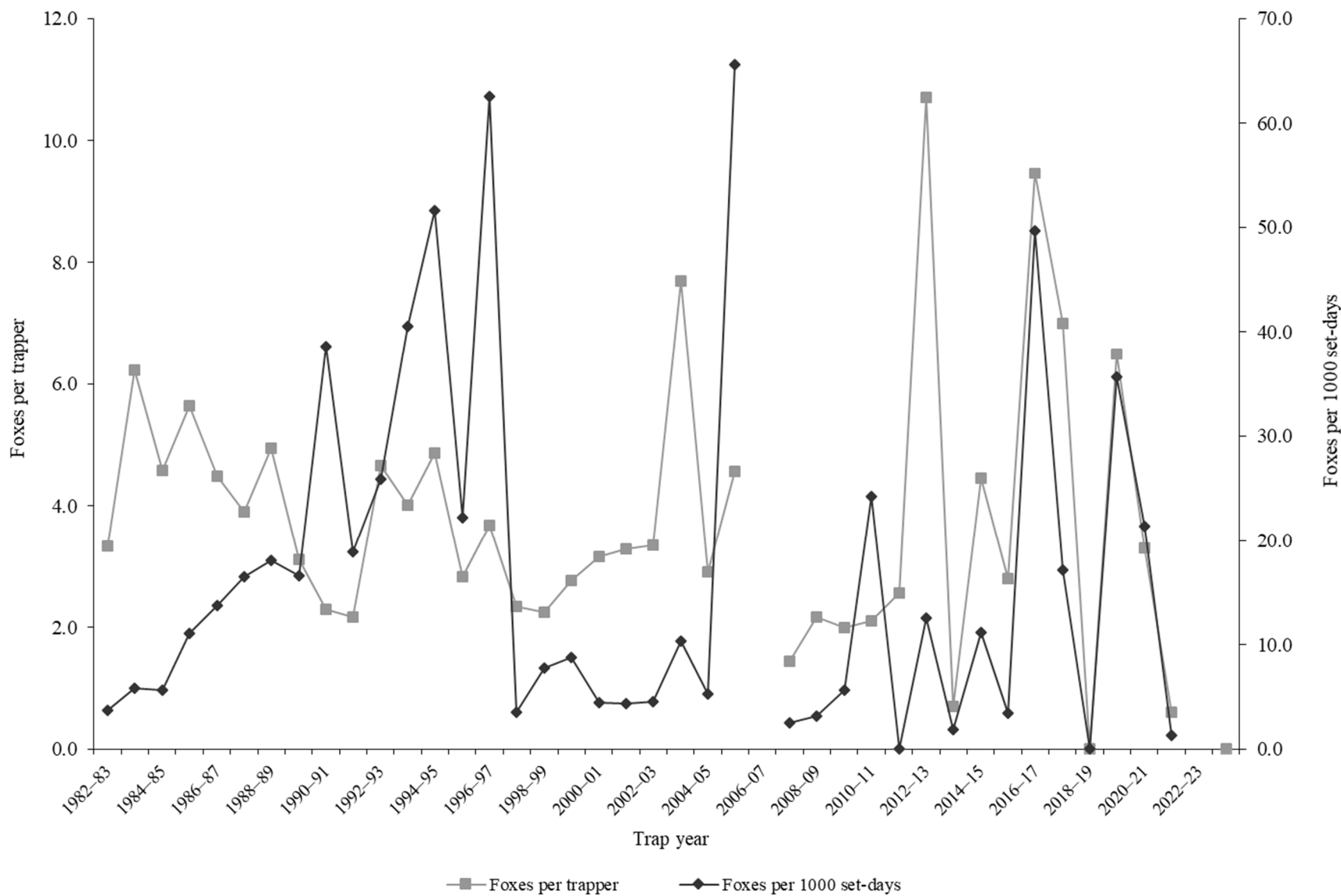
*Trappers and foxes per trapper include hunters and their harvest. Set-days per fox and foxes per 1000 set-days are based only on trapping activity, and do not include hunt harvest or hunter-days afield.

Statewide kit fox harvest statistics*, Utah 1982–2024 (continued).

Trap year	Trappers afield	Incidental harvest	Trap harvest	Hunt harvest	Set-days / fox	Foxes / 1000 set-days	Foxes / trapper	Pelt price (\$)
2021–22	17	7	7	7	792	1.3	0.6	—
2022–23	3	24	0	7	—	—	—	12.22
2023–24	15	11	0	8	—	—	0.0	16.19
Average	58	26	226	10	149	16.8	3.7	8.61

*Trappers and foxes per trapper include hunters and their harvest. Set-days per fox and foxes per 1000 set-days are based only on trapping activity, and do not include hunt harvest or hunter-days afield.

Statewide kit fox harvest trends, Utah 1982–2024.



MARTEN

Statewide marten harvest statistics, Utah 1982–1999.

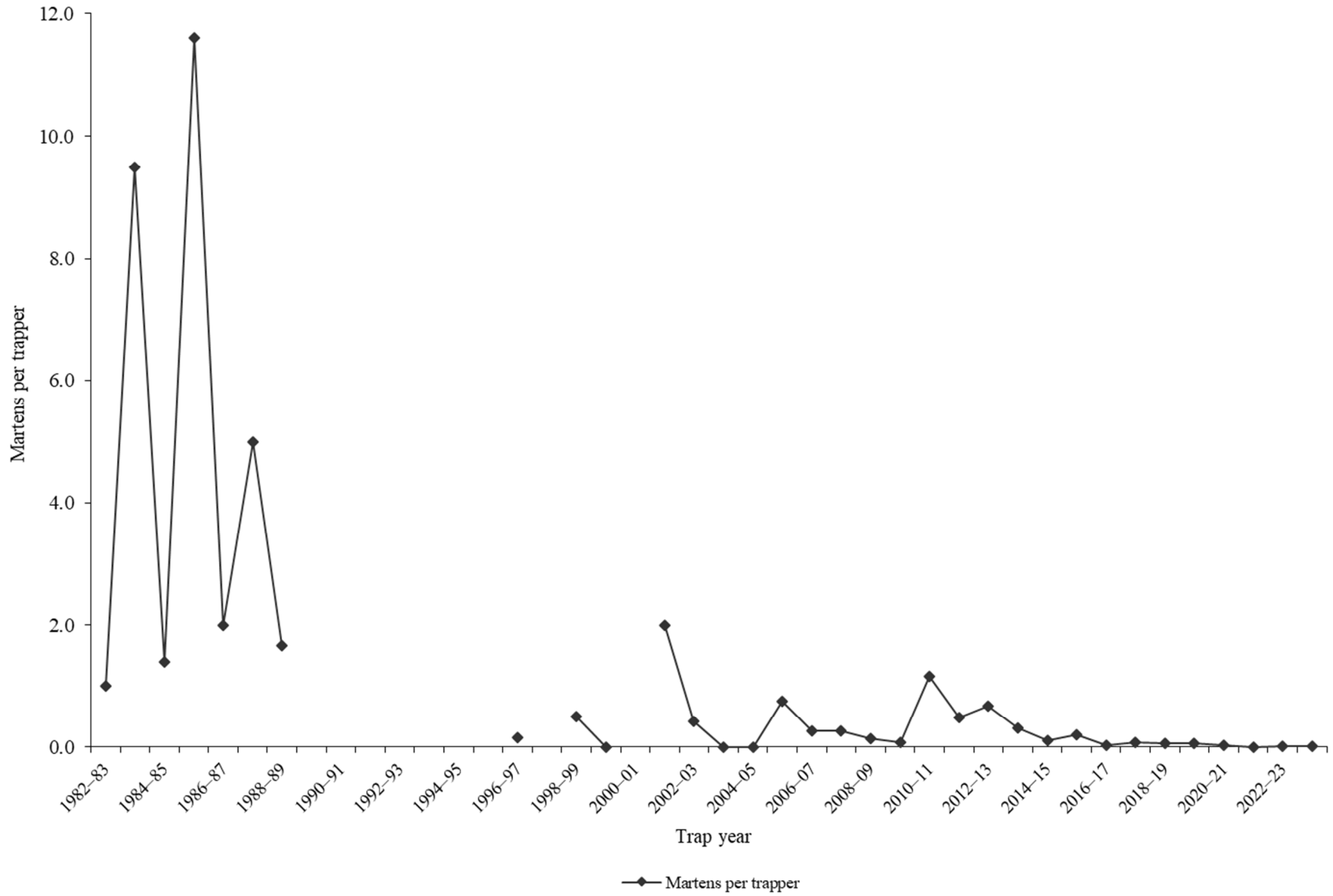
Trap year	Trappers afield	Trap / hunt harvest	Set-days	Set-days / marten	Martens / 1000 set-days	Martens / trapper	Pelt price (\$)
1982–83	1	1	6	6	166.7	1.0	10.00
1983–84	9	84	4704	56	17.9	9.5	20.00
1984–85	9	12	6516	543	1.8	1.4	24.00
1985–86	10	121	7381	61	16.4	11.6	23.00
1986–87	11	22	8558	389	2.6	2.0	25.68
1987–88	10	50	9750	195	5.1	5.0	40.00
1988–89	6	10	1210	121	8.3	1.7	31.00
1989–90	—	—	—	—	—	—	—
1990–91	—	—	—	—	—	—	—
1991–92	—	—	—	—	—	—	—
1992–93	—	—	—	—	—	—	—
1993–94	—	—	—	—	—	—	—
1994–95	—	—	—	—	—	—	—
1995–96	—	—	—	—	—	—	—
1996–97	13	2	—	—	—	0.2	20.00
1997–98	—	—	—	—	—	—	11.00
1998–99	12	6	1228	205	4.9	0.5	7.11
Average	9	34	4919	197	28.0	3.6	21.18

Statewide marten harvest statistics, Utah 1999–2024.

Trap year	Permits sold	Successful trappers	Male harvest	Female harvest	Unknown harvest	Total harvest	Success rate (%)*	Martens / trapper*
1999–00	5	0	0	0	0	0	0.0	0.0
2000–01	—	1	3	3	0	6	—	—
2001–02	11	2	16	6	0	22	18.2	2.0
2002–03	12	1	3	2	0	5	8.3	0.4
2003–04	18	0	0	0	0	0	0.0	0.0
2004–05	12	0	0	0	0	0	0.0	0.0
2005–06	16	2	7	4	1	12	12.5	0.8
2006–07	26	3	6	1	0	7	11.5	0.3
2007–08	22	4	7	14	0	21	18.2	1.0
2008–09	28	1	2	2	0	4	3.6	0.1
2009–10	25	1	2	0	0	2	4.0	0.1
2010–11	31	2	24	12	0	36	6.5	1.2
2011–12	29	3	7	3	4	14	10.3	0.5
2012–13	39	3	15	5	6	26	7.7	0.7
2013–14	51	6	13	3	0	16	11.8	0.3
2014–15	202	2	16	6	0	22	1.0	0.1
2015–16	46	1	5	4	0	9	2.2	0.2
2016–17	89	2	2	0	0	2	2.2	0.0
2017–18	184	3	11	4	0	15	1.6	0.1
2018–19	188	1	9	2	0	11	0.5	0.1
2019–20	152	1	4	4	0	8	0.7	0.1
2020–21	179	2	3	1	0	4	1.1	0.0
2021–22	152	0	0	0	0	0	0.0	0.0
2022–23	128	1	0	1	0	1	0.8	0.0
2023–24	185	1	1	0	0	1	0.0	0.0
Average	76	2	7	3	0	10	5.1	0.3

*Assumption: Every person who possessed a marten permit trapped or hunted.

Statewide marten harvest trends, Utah 1982–2024.



MINK

Statewide mink harvest statistics*, Utah 1982–2024.

Trap year	Trappers afield	Incidental harvest	Trap harvest	Hunt harvest	Set-days / mink	Minks / 1000 set-days	Minks / trapper	Pelt price (\$)
1982–83	38	—	405	—	44	22.7	10.7	10.85
1983–84	46	—	379	—	95	10.5	8.2	9.13
1984–85	40	—	542	—	117	8.6	13.6	10.27
1985–86	37	—	837	—	94	10.7	22.6	6.00
1986–87	57	—	828	—	42	23.6	14.5	10.63
1987–88	51	—	1037	—	42	23.6	20.3	12.25
1988–89	42	—	854	—	60	16.6	20.3	10.69
1989–90	29	—	1114	—	40	24.8	38.4	6.30
1990–91	25	—	543	—	50	19.8	21.7	6.33
1991–92	29	—	723	—	42	23.9	24.9	6.81
1992–93	23	—	380	—	57	17.6	16.5	7.50
1993–94	30	—	472	—	53	18.9	15.7	8.41
1994–95	27	—	350	—	36	27.6	13.0	8.38
1995–96	25	—	529	—	22	45.0	21.2	10.40
1996–97	27	—	269	—	50	19.8	10.0	10.95
1997–98	25	—	337	—	51	19.4	13.5	5.81
1998–99	81	—	345	—	116	8.6	4.3	7.11
1999–00	61	—	419	—	34	29.1	6.9	6.07
2000–01	51	—	468	—	15	68.1	9.2	4.92
2001–02	30	—	284	—	53	18.8	9.5	5.20
2002–03	59	—	268	—	17	59.8	4.5	2.07
2003–04	59	—	673	—	73	13.7	11.4	8.00
2004–05	68	—	317	—	36	27.5	4.7	8.98
2005–06	34	—	222	—	22	45.4	6.5	9.97
2006–07	65	—	—	—	—	—	—	7.94
2007–08	38	—	186	—	23	43.7	4.9	9.33
2008–09	36	—	242	—	44	22.9	6.7	5.96
2009–10	66	57	338	—	30	33.7	5.1	8.00
2010–11	65	151	485	—	107	9.4	7.5	11.27
2011–12	43	61	153	7	31	31.8	3.6	15.08
2012–13	110	147	706	14	70	14.4	6.4	19.18
2013–14	115	186	826	0	27	36.6	7.2	16.21
2014–15	54	82	259	0	100	10.0	4.8	8.57
2015–16	74	55	133	0	61	16.4	1.8	4.22
2016–17	60	29	196	21	46	21.7	3.3	7.52
2017–18	59	47	225	0	173	5.8	3.8	3.00
2018–19	33	20	219	7	34	29.6	6.8	2.00
2019–20	47	37	324	0	29	34.0	6.9	0.94
2020–21	26	36	91	0	31	32.7	3.5	—

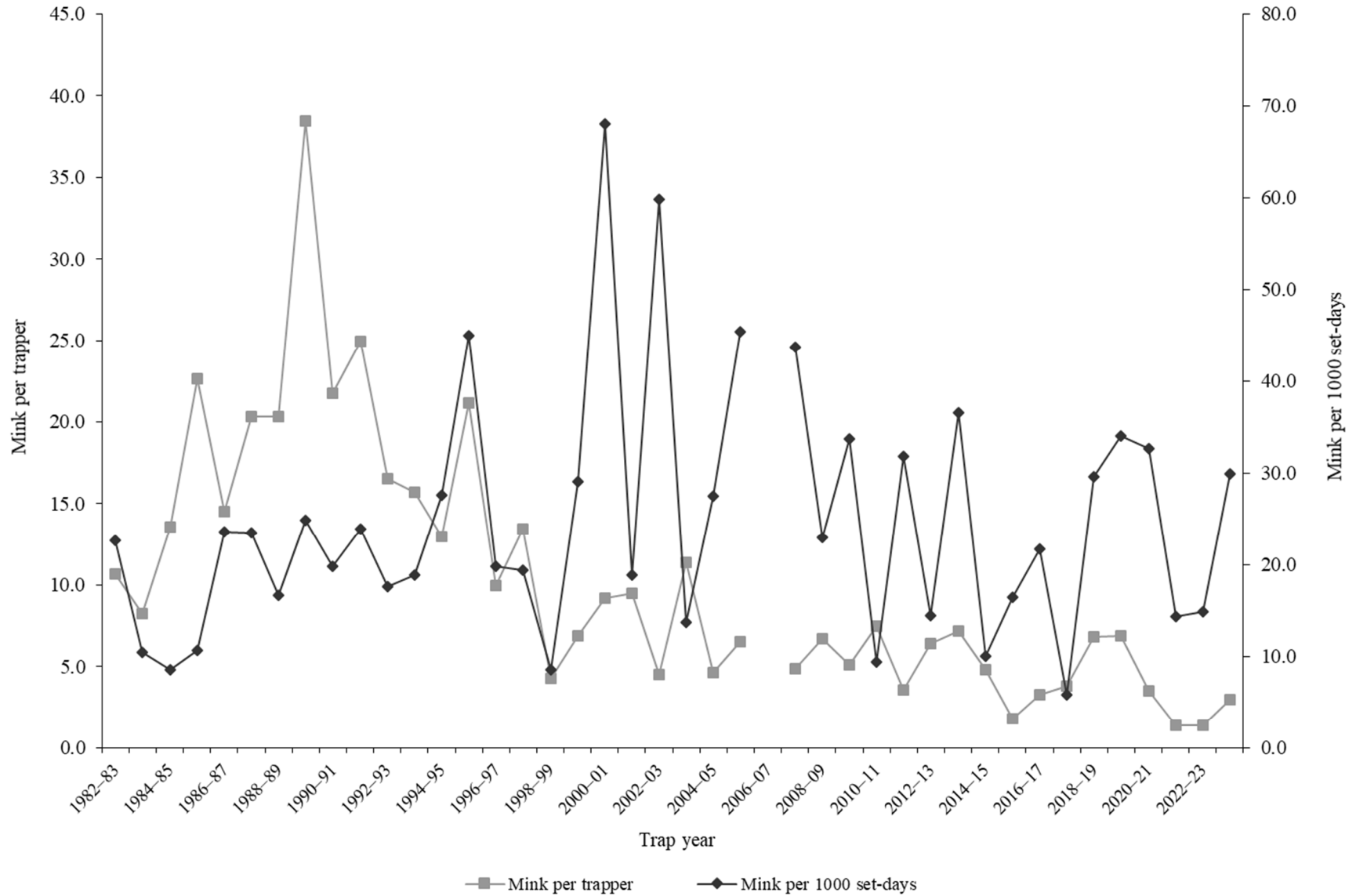
*Trappers and minks per trapper include hunters and their harvest. Set-days per mink and minks per 1000 set-days are based only on trapping activity, and do not include hunt harvest or hunter-days afield.

Statewide mink harvest statistics*, Utah 1982–2024 (continued).

Trap year	Trappers afield	Incidental harvest	Trap harvest	Hunt harvest	Set-days / mink	Minks / 1000 set-days	Minks / trapper	Pelt price (\$)
2021–22	25	89	32	0	70	14.3	1.4	2.00
2022–23	24	10	34	0	67	14.9	1.4	1.00
2023–24	19	4	34	4	33	29.9	3.0	—
Average	47	67	417	4	55	24.5	10.2	7.88

*Trappers and minks per trapper include hunters and their harvest. Set-days per mink and minks per 1000 set-days are based only on trapping activity, and do not include hunt harvest or hunter-days afield.

Statewide mink harvest trends, Utah 1982–2024.



*Statewide totals for sample size and trappers afield are not totals of the columns because trappers trapped multiple counties.

MUSKRAT

Statewide muskrat harvest statistics*, Utah 1982–2024.

Trap year	Trappers afield	Incidental harvest	Trap harvest	Hunt harvest	Set-days / muskrat	Musk rats / 1000 set-days	Musk rats / trapper	Pelt price (\$)
1982–83	258	—	55137	—	5	183.1	213.7	2.16
1983–84	309	—	55298	—	4	256.2	179.0	2.46
1984–85	400	—	54526	—	6	168.1	136.3	2.45
1985–86	282	—	39195	—	6	158.9	139.0	1.86
1986–87	416	—	59368	—	4	251.7	142.7	2.66
1987–88	432	—	58560	—	5	182.2	135.6	2.46
1988–89	303	—	33400	—	5	199.4	110.2	1.40
1989–90	253	—	16898	—	7	149.6	66.8	0.89
1990–91	85	—	7102	—	7	134.6	83.6	0.91
1991–92	186	—	19547	—	6	162.7	105.1	1.60
1992–93	105	—	11623	—	5	205.9	110.7	1.18
1993–94	157	—	22488	—	5	221.5	143.2	1.89
1994–95	195	—	28369	—	6	180.5	145.5	1.74
1995–96	181	—	26260	—	5	182.2	145.1	2.09
1996–97	179	—	23371	—	4	267.9	130.6	3.59
1997–98	203	—	26907	—	6	158.7	132.5	2.01
1998–99	186	—	21895	—	7	134.1	117.7	1.73
1999–00	151	—	21086	—	7	153.7	139.6	1.00
2000–01	108	—	10376	—	14	69.8	96.1	1.58
2001–02	115	—	14979	—	12	84.0	130.3	2.60
2002–03	135	—	6334	—	9	114.6	46.9	1.59
2003–04	176	—	10777	—	13	77.0	61.2	1.57
2004–05	151	—	15016	—	19	53.1	99.4	1.57
2005–06	41	0	824	—	66	15.3	20.1	3.97
2006–07	81	—	—	—	—	—	—	3.31
2007–08	80	110	1665	—	30	33.3	20.9	3.04
2008–09	98	137	1198	—	63	15.9	12.2	2.49
2009–10	158	164	5341	—	25	40.5	33.8	4.93
2010–11	141	337	7361	—	24	42.2	52.2	5.40
2011–12	150	281	7985	—	23	44.4	53.2	7.28
2012–13	192	117	13534	3	23	44.2	70.5	8.11
2013–14	213	159	8605	0	21	47.5	40.4	8.73
2014–15	168	180	5902	9	16	61.8	35.1	3.76
2015–16	210	41	6130	4	13	74.9	29.2	1.89
2016–17	128	92	3069	3	19	51.8	24.0	3.78
2017–18	122	110	7131	24	17	58.8	58.5	2.91
2018–19	72	24	3465	2	25	39.9	48.2	3.15
2019–20	74	153	4837	2	19	51.5	65.4	3.26
2020–21	98	65	4897	0	13	78.5	50.0	—

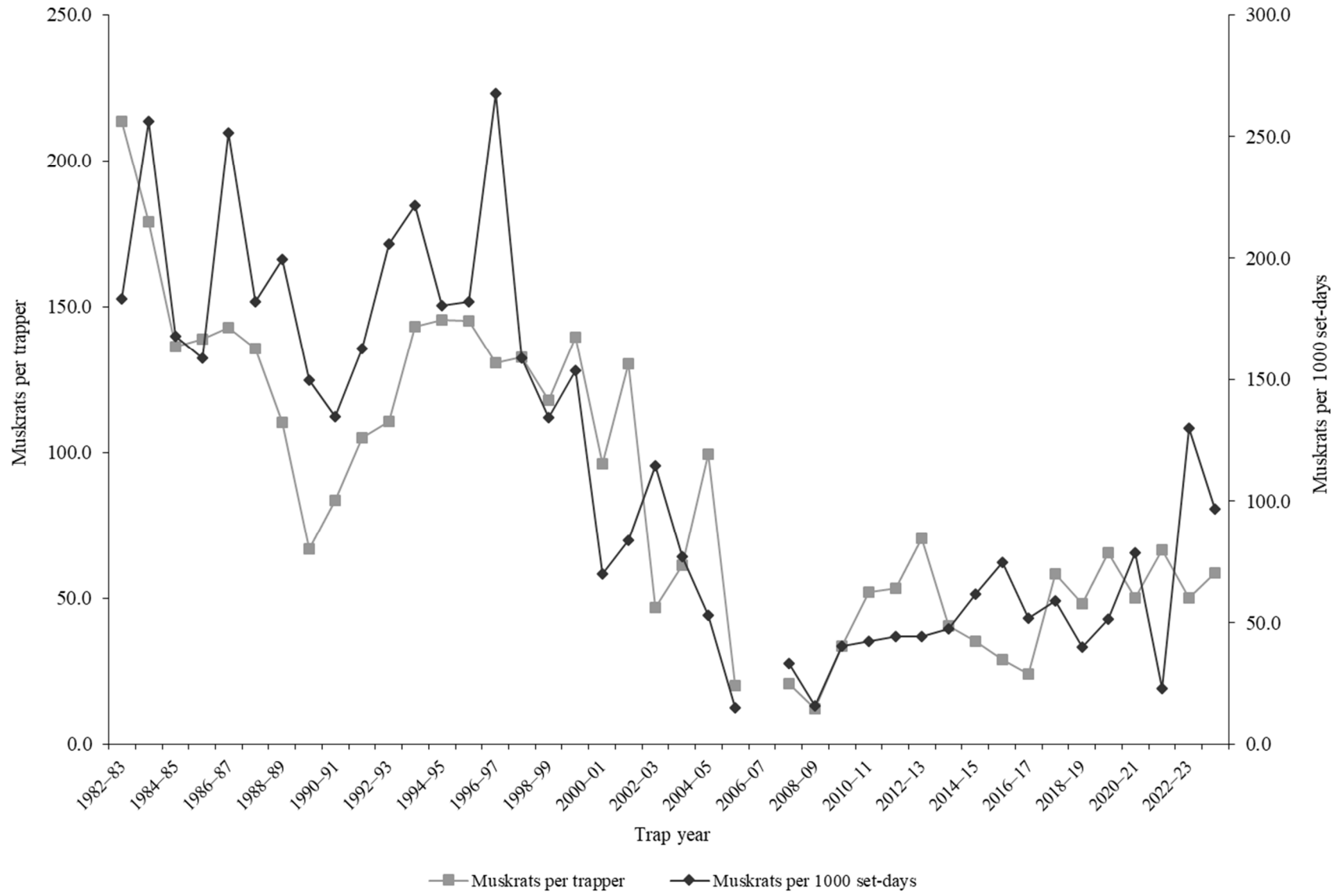
*Trappers and muskrat per trapper include hunters and their harvest. Set-days per muskrat and muskrat per 1000 set-days are based only on trapping activity, and do not include hunt harvest or hunter-days afield.

Statewide muskrat harvest statistics*, Utah 1982–2024 (continued).

Trap year	Trappers afield	Incidental harvest	Trap harvest	Hunt harvest	Set-days / muskrat	Musk rats / 1000 set-days	Musk rats / trapper	Pelt price (\$)
2021–22	85	333	5449	5	44	22.9	66.4	3.07
2022–23	61	162	2692	34	8	129.9	50.0	2.84
2023–24	53	0	2888	8	10	96.7	58.6	2.27
Average	171	137	17841	8	15	114.6	87.8	2.86

*Trappers and muskrat per trapper include hunters and their harvest. Set-days per muskrat and muskrat per 1000 set-days are based only on trapping activity, and do not include hunt harvest or hunter-days afield.

Statewide muskrat harvest trends, Utah 1982–2024.



RACCOON

Statewide raccoon harvest statistics*, Utah 1982–2024.

Trap year	Trappers afield	Incidental harvest	Trap harvest	Hunt harvest	Set-days / raccoon	Raccoons / 1000 set-days	Raccoons / trapper	Pelt price (\$)
1982–83	178	—	853	—	19	51.3	4.8	12.34
1983–84	192	—	822	—	40	25.0	4.3	13.51
1984–85	329	—	1417	—	47	21.2	4.3	12.85
1985–86	290	—	1485	—	49	20.5	5.1	9.26
1986–87	418	—	2412	—	39	25.5	5.8	12.62
1987–88	434	—	2619	—	41	24.3	6.0	9.41
1988–89	350	—	3104	—	14	71.9	8.9	7.71
1989–90	430	—	2464	—	17	58.8	5.7	5.78
1990–91	214	—	1156	—	18	54.3	5.4	4.65
1991–92	368	—	2273	—	20	50.3	6.2	4.72
1992–93	272	—	1851	—	17	59.5	6.8	2.57
1993–94	306	—	2259	—	19	53.4	7.4	6.98
1994–95	364	—	3025	—	23	43.8	8.3	6.06
1995–96	293	—	2914	—	10	100.1	9.9	8.07
1996–97	330	—	4228	—	13	77.2	12.8	13.35
1997–98	365	—	4989	—	29	34.5	13.7	9.98
1998–99	468	—	7765	—	22	45.5	16.6	4.95
1999–00	349	—	5317	—	34	29.8	15.2	5.67
2000–01	327	—	5678	—	29	34.8	17.4	5.16
2001–02	321	—	3785	—	32	31.2	11.8	8.04
2002–03	378	—	4001	—	26	38.4	10.6	5.62
2003–04	434	—	5634	—	37	26.8	13.0	10.63
2004–05	391	—	6405	—	35	28.4	16.4	6.54
2005–06	230	—	1761	1537	246	4.1	14.3	9.83
2006–07	325	—	—	—	—	—	—	7.18
2007–08	300	—	2414	1576	50	19.8	13.3	10.85
2008–09	275	—	1639	729	58	17.4	8.6	6.21
2009–10	349	633	3439	946	39	25.9	12.6	7.09
2010–11	292	571	3958	1417	28	36.0	18.4	8.17
2011–12	289	453	3168	520	34	29.6	12.8	7.77
2012–13	377	614	4048	1577	35	28.4	14.9	14.08
2013–14	374	1066	4031	385	48	21.0	11.8	9.50
2014–15	354	743	4046	648	49	20.4	13.3	5.46
2015–16	343	627	3631	490	44	22.7	12.0	4.10
2016–17	264	523	2734	371	55	18.2	11.8	4.92
2017–18	258	601	3539	1181	29	34.8	18.3	3.92
2018–19	141	486	1798	376	48	21.0	15.4	6.49
2019–20	217	376	2979	652	27	37.6	16.7	6.55
2020–21	283	671	2858	935	118	8.5	13.4	—

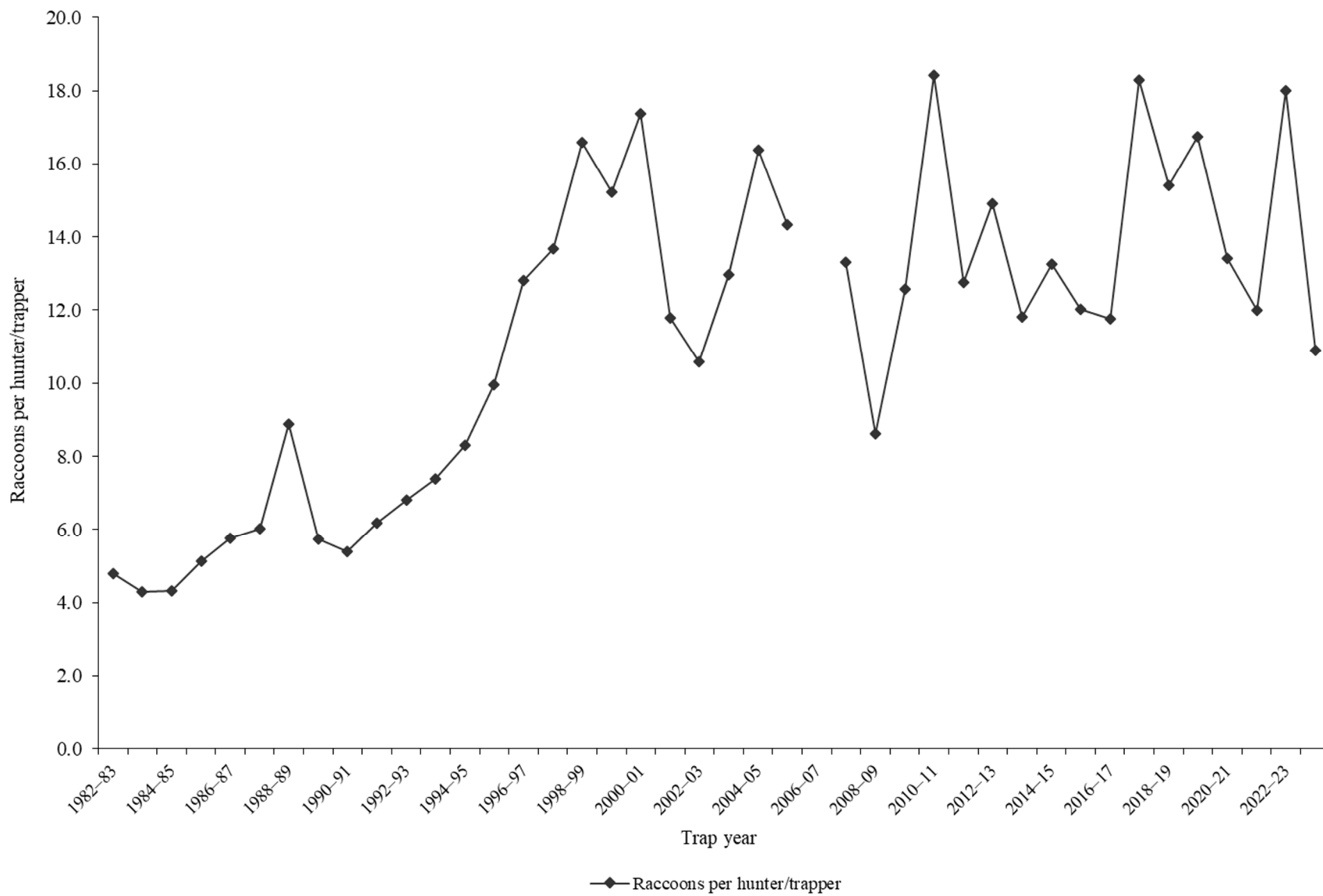
*Trappers and raccoons per trapper include hunters and their harvest. Set-days per raccoon and raccoons per 1000 set-days are based only on trapping activity, and do not include hunt harvest or hunter-days afield.

Statewide raccoon harvest statistics*, Utah 1982–2024 (continued).

Trap year	Trappers afield	Incidental harvest	Trap harvest	Hunt harvest	Set-days / raccoon	Raccoons / 1000 set-days	Raccoons / trapper	Pelt price (\$)
2021–22	236	594	2450	373	38	26.2	12.0	3.75
2022–23	222	498	3267	353	19	52.1	18.0	6.53
2023–24	205	318	1944	205	29	34.0	10.9	5.54
Average	313	585	3175	793	40	35.7	11.3	7.67

*Trappers and raccoons per trapper include hunters and their harvest. Set-days per raccoon and raccoons per 1000 set-days are based only on trapping activity, and do not include hunt harvest or hunter-days afield.

Statewide raccoon harvest trends, Utah 1982–2024.



Raccoon trapping harvest statistics by county and ecoregion, Utah 2023–24.

County	n	Trappers afield	Trap harvest	Traps set	Trapping days	Set-days	Set-days / raccoon	Raccoons / 1000 set-days	Raccoons / trapper
Beaver	0	0	—	—	—	—	—	—	—
Box Elder	1	4	53	38	19	189	3.6	280.0	14.0
Iron	2	8	4	30	743	4214	1112.0	0.9	0.5
Juab	0	0	—	—	—	—	—	—	—
Millard	1	4	11	8	53	106	9.3	107.1	3.0
Tooele	1	4	4	27	87	610	161.0	6.2	1.0
Great Basin totals	5	19	72	102	902	5120	71.1	14.1	3.8
Cache	4	15	76	42	409	3687	48.7	20.6	5.0
Davis	0	0	—	—	—	—	—	—	—
Morgan	3	11	705	129	447	6442	9.1	109.4	62.0
Piute	0	0	—	—	—	—	—	—	—
Rich	1	4	19	19	76	379	20.0	50.0	5.0
Salt Lake	0	0	—	—	—	—	—	—	—
Sanpete	4	15	49	87	834	5154	104.6	9.6	3.3
Sevier	4	15	125	110	625	4548	36.4	27.5	8.3
Summit	3	11	34	34	345	1705	50.0	20.0	3.0
Utah	8	30	390	220	819	11919	30.5	32.7	12.9
Wasatch	3	11	68	42	466	3780	55.4	18.0	6.0
Weber	3	11	80	106	171	3024	38.0	26.3	7.0
Rocky Mountain totals	33	125	1546	788	4191	40638	26.3	38.0	12.4
Daggett	0	0	—	—	—	—	—	—	—
Duchesne	3	11	45	42	250	1144	25.2	39.7	4.0
Uintah	3	11	95	87	231	1554	16.4	61.0	8.3
Uintah Basin totals	6	23	140	129	481	2698	19.2	52.0	6.2
Carbon	1	4	23	15	227	910	40.0	25.0	6.0
Emery	1	4	19	19	38	189	10.0	100.0	5.0
Garfield	0	0	—	—	—	—	—	—	—
Grand	0	0	—	—	—	—	—	—	—
Kane	2	8	95	57	910	7049	74.4	13.4	12.5
San Juan	1	4	4	0	4	0	0.0	—	1.0
Washington	2	8	45	27	110	584	12.8	77.9	6.0
Wayne	0	0	—	—	—	—	—	—	—
Colorado Plateau totals	7	27	186	117	1288	8731	47.0	21.3	7.0
Unknown	0	0	—	—	—	—	—	—	—
Statewide totals*	47	178	1944	1137	6863	57188	29.4	34.0	10.9

*Statewide totals for sample size and trappers afield are not totals of the columns because trappers trapped multiple counties.

RED FOX

Statewide red fox harvest statistics*, Utah 1982–2024.

Trap year	Trappers afield	Incidental harvest	Trap harvest	Hunt harvest	Set-days / fox	Foxes / 1000 set-days	Foxes / trapper	Pelt price (\$)
1982–83	172	—	544	—	128	7.8	3.2	30.13
1983–84	191	—	523	—	134	7.5	2.7	28.43
1984–85	298	—	1244	—	116	8.7	4.2	25.90
1985–86	316	—	1351	—	74	13.6	4.3	15.83
1986–87	444	—	2446	—	59	17.1	5.5	20.14
1987–88	506	—	2545	—	50	20.2	5.0	13.66
1988–89	398	—	2446	—	34	29.2	6.1	6.57
1989–90	496	—	2250	—	40	25.3	4.5	7.80
1990–91	365	—	1993	—	25	40.0	5.5	6.34
1991–92	623	—	3663	—	28	35.4	5.9	10.70
1992–93	594	—	3126	—	27	37.5	5.3	10.12
1993–94	578	—	5055	—	26	38.9	8.7	14.74
1994–95	509	—	4378	—	36	28.0	8.6	15.34
1995–96	421	—	4115	—	26	38.7	9.8	18.08
1996–97	427	—	4274	—	27	36.8	10.0	17.48
1997–98	414	—	3744	—	32	31.5	9.0	11.31
1998–99	570	—	5600	—	34	29.5	9.8	8.95
1999–00	420	—	4900	—	44	22.7	11.7	14.19
2000–01	375	—	5330	—	52	19.1	14.2	16.92
2001–02	379	—	3192	—	59	16.9	8.4	24.48
2002–03	482	—	4399	—	76	13.1	9.1	28.19
2003–04	568	—	4639	—	71	14.1	8.2	18.07
2004–05	545	—	4674	—	102	9.8	8.6	18.86
2005–06	406	—	1874	—	196	5.1	4.6	24.35
2006–07	496	—	—	—	—	—	—	20.49
2007–08	407	—	1130	—	174	5.7	2.8	21.42
2008–09	339	—	872	—	261	3.8	2.6	17.98
2009–10	461	557	1908	192	102	9.8	4.6	16.32
2010–11	376	216	2435	213	84	12.0	7.0	22.62
2011–12	335	388	1757	128	84	11.9	5.6	42.47
2012–13	380	195	1690	171	83	12.1	4.9	43.50
2013–14	428	519	1934	64	154	6.5	4.7	40.39
2014–15	361	478	1714	79	161	6.2	5.0	24.30
2015–16	361	494	1183	203	180	5.6	3.8	15.37
2016–17	207	351	1175	99	249	4.0	6.2	16.16
2017–18	251	372	1048	84	122	8.2	4.5	14.63
2018–19	165	252	627	102	179	5.6	4.4	15.92
2019–20	192	233	669	277	116	8.6	4.9	18.89
2020–21	222	342	407	39	177	5.7	2.0	—

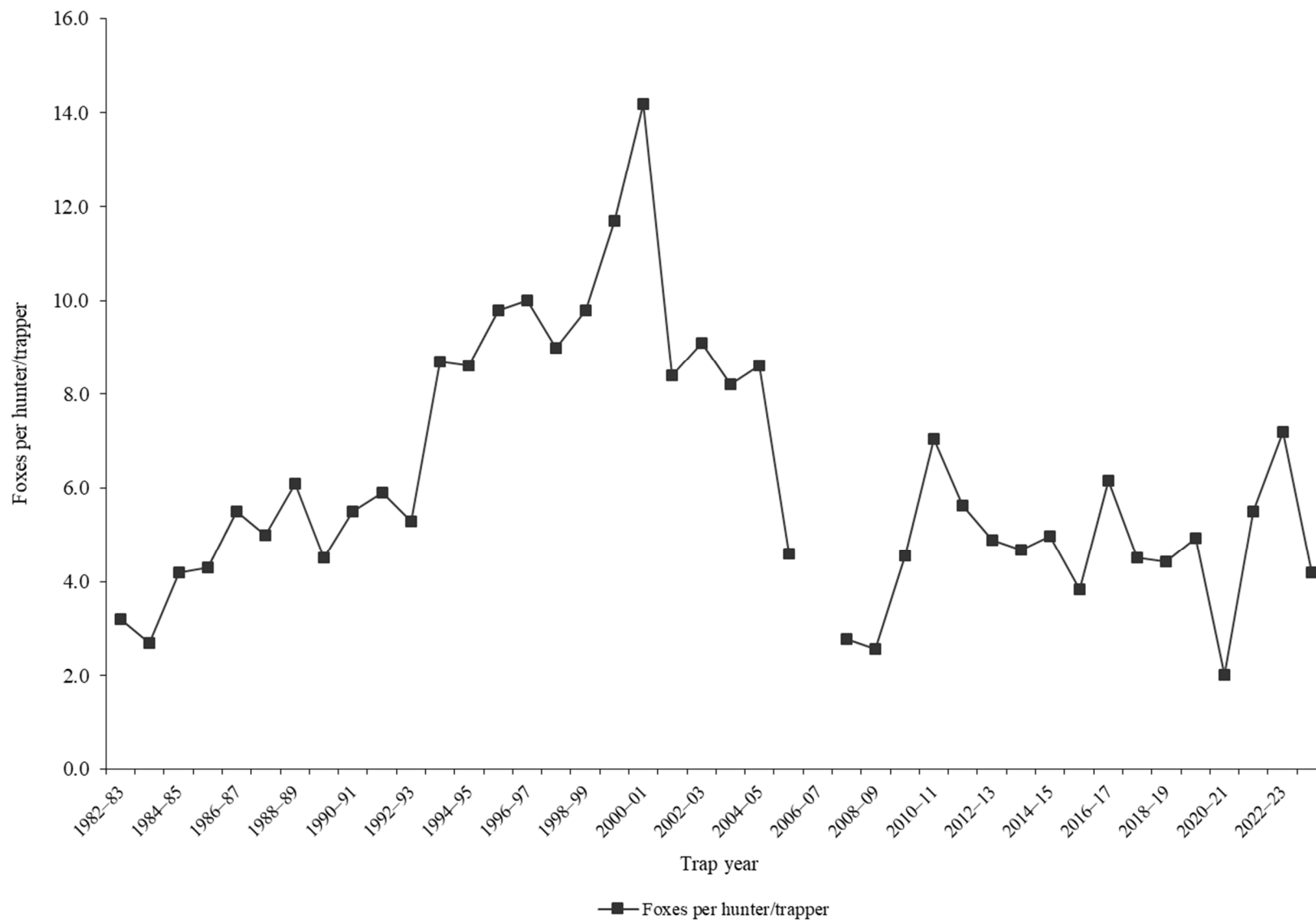
*Trappers and foxes per trapper include hunters and their harvest. Set-days per fox and foxes per 1000 set-days are based only on trapping activity, and do not include hunt harvest or hunter-days afield.

Statewide red fox harvest statistics*, Utah 1982–2024 (continued).

Trap year	Trappers afield	Incidental harvest	Trap harvest	Hunt harvest	Set-days / fox	Foxes / 1000 set-days	Foxes / trapper	Pelt price (\$)
2021–22	184	529	731	42	107	9.4	5.5	14.26
2022–23	168	118	1040	40	43	23.3	7.2	10.34
2023–24	171	182	621	53	64	15.6	4.2	20.55
Average	381	348	2421	119	94	17.1	6.2	19.08

*Trappers and foxes per trapper include hunters and their harvest. Set-days per fox and foxes per 1000 set-days are based only on trapping activity, and do not include hunt harvest or hunter-days afield.

Statewide red fox harvest trends, Utah 1982–2024.



Red fox trapping harvest statistics by county and ecoregion, Utah 2023–24.

County	n	Trappers afield	Trap harvest	Traps set	Trapping days	Set-days	Set-days / fox	Foxes / 1000 set-days	Foxes / trapper
Beaver	0	0	—	—	—	—	—	—	—
Box Elder	2	8	45	19	379	1516	33.3	30.0	6.0
Iron	3	11	11	114	144	3809	335.0	3.0	1.0
Juab	1	4	8	19	114	568	75.0	13.3	2.0
Millard	0	0	—	—	—	—	—	—	—
Tooele	1	4	0	—	—	—	—	—	0.0
Great Basin totals	7	27	64	152	637	5893	91.5	10.9	2.4
Cache	1	4	23	23	114	682	30.0	33.3	6.0
Davis	2	8	27	49	144	925	34.9	28.7	3.5
Morgan	2	8	30	23	144	500	16.5	60.6	4.0
Piute	0	0	—	—	—	—	—	—	—
Rich	2	8	38	34	193	887	23.4	42.7	5.0
Salt Lake	0	0	—	—	—	—	—	—	—
Sanpete	3	11	42	95	519	5396	129.5	7.7	3.7
Sevier	3	11	68	95	303	2463	36.1	27.7	6.0
Summit	0	0	—	—	—	—	—	—	—
Utah	7	27	167	117	667	12176	73.0	13.7	6.3
Wasatch	0	0	—	—	—	—	—	—	—
Weber	3	11	57	53	254	1175	20.7	48.4	5.0
Rocky Mountain totals	23	87	452	489	2338	24204	53.7	18.6	5.2
Daggett	0	0	—	—	—	—	—	—	—
Duchesne	1	4	0	27	171	1194	—	0.0	0.0
Uintah	3	11	27	64	288	1535	57.9	17.3	2.3
Uintah Basin totals	4	15	27	91	459	2729	102.9	9.7	1.8
Carbon	1	4	4	8	152	303	80.0	12.5	1.0
Emery	3	11	64	27	364	910	14.1	70.8	5.7
Garfield	0	0	—	—	—	—	—	—	—
Grand	0	0	—	—	—	—	—	—	—
Kane	1	4	0	27	227	1592	—	0.0	0.0
San Juan	1	4	11	87	152	3486	306.7	3.3	3.0
Washington	1	4	0	27	114	796	—	0.0	0.0
Wayne	0	0	—	—	—	—	—	—	—
Colorado Plateau totals	7	27	79	174	1008	7087	89.0	11.2	3.0
Unknown	0	0	—	—	—	—	—	—	—
Statewide totals*	39	148	621	906	4441	39912	64.2	15.6	4.2

*Statewide totals for sample size and trappers afield are not totals of the columns because trappers trapped multiple counties.

RINGTAIL

Statewide ringtail harvest statistics*, Utah 1982–2024.

Trap year	Trappers afield	Incidental harvest	Trap harvest	Hunt harvest	Set-days / ringtail	Ringtails / 1000 set-days	Ringtails / trapper	Pelt price (\$)
1982–83	90	—	325	—	176	5.7	3.6	4.40
1983–84	90	—	378	—	203	4.9	4.2	3.96
1984–85	85	—	252	—	218	4.6	3.0	3.15
1985–86	68	—	161	—	114	8.8	2.4	2.69
1986–87	79	—	205	—	105	9.6	2.6	3.64
1987–88	79	—	268	—	62	16.0	3.4	2.40
1988–89	62	—	186	—	61	16.4	3.0	5.70
1989–90	66	—	132	—	93	10.7	2.0	2.65
1990–91	18	—	99	—	23	42.8	5.5	3.50
1991–92	46	—	220	—	21	48.1	4.8	3.22
1992–93	27	—	107	—	59	16.9	4.0	3.97
1993–94	37	—	64	—	80	12.6	1.7	4.04
1994–95	69	—	159	—	70	14.3	2.3	6.41
1995–96	44	—	136	—	37	27.4	3.1	6.96
1996–97	32	—	46	—	122	8.2	1.4	11.68
1997–98	21	—	57	—	227	4.4	2.7	2.99
1998–99	66	—	138	—	134	7.5	2.1	4.17
1999–00	61	—	101	—	93	10.7	1.7	7.03
2000–01	51	—	118	—	194	5.2	2.3	6.00
2001–02	40	—	101	—	236	4.2	2.5	10.29
2002–03	56	—	115	—	474	2.1	2.1	5.20
2003–04	42	—	96	—	223	4.5	2.3	6.83
2004–05	59	—	127	—	165	6.1	2.2	11.12
2005–06	19	—	103	—	79	12.7	5.4	9.31
2006–07	98	—	—	—	—	—	—	12.37
2007–08	65	—	108	—	104	9.6	1.7	14.86
2008–09	31	—	59	—	621	1.6	1.9	10.70
2009–10	22	63	46	—	77	13.0	2.1	15.00
2010–11	16	26	36	—	356	2.8	2.3	18.91
2011–12	18	14	14	—	36	27.6	0.8	12.21
2012–13	7	41	21	0	16	64.5	3.0	15.66
2013–14	24	64	37	0	991	1.0	1.5	17.91
2014–15	13	32	32	0	150	6.7	2.5	17.27
2015–16	18	52	18	0	24	42.4	1.0	12.56
2016–17	18	18	84	0	14	69.3	4.7	23.47
2017–18	28	47	110	2	55	18.4	3.9	20.81
2018–19	13	0	15	7	221	4.5	1.7	10.36
2019–20	6	0	6	0	271	3.7	1.0	27.77
2020–21	16	0	7	0	219	4.6	0.4	—

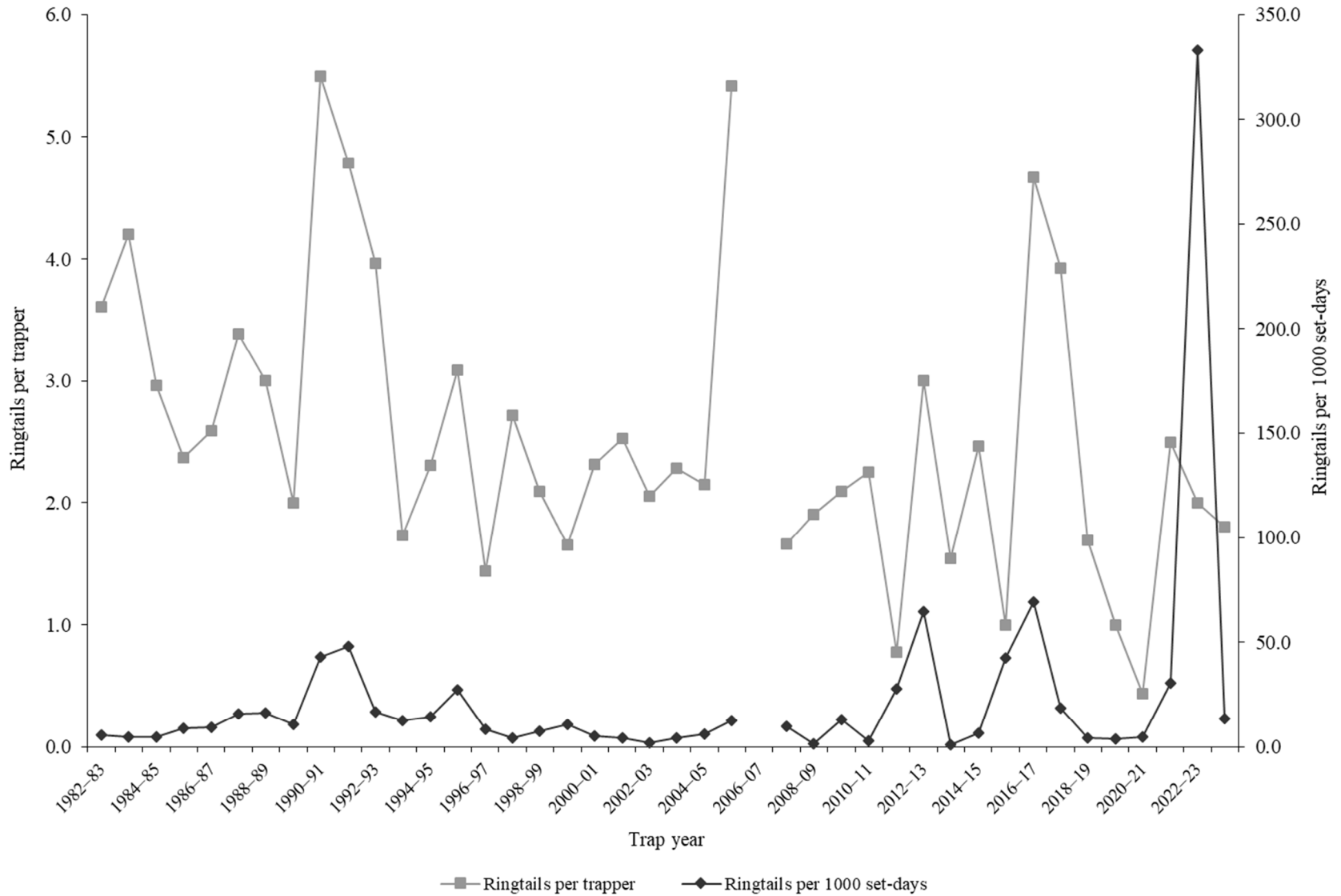
*Trappers and ringtails per trapper include hunters and their harvest. Set-days per ringtail and ringtails per 1000 set-days are based only on trapping activity, and do not include hunt harvest or hunter-days afield.

Statewide ringtail harvest statistics*, Utah 1982–2024 (continued).

Trap year	Trappers afield	Incidental harvest	Trap harvest	Hunt harvest	Set-days / ringtail	Ringtails / 1000 set-days	Ringtails / trapper	Pelt price (\$)
2021–22	12	12	12	5	33	30.3	2.5	20.22
2022–23	7	20	7	0	3	333.3	2.0	25.37
2023–24	27	45	34	4	75	13.3	1.8	29.31
Average	42	29	106	2	159	23.2	2.6	10.64

*Trappers and ringtails per trapper include hunters and their harvest. Set-days per ringtail and ringtails per 1000 set-days are based only on trapping activity, and do not include hunt harvest or hunter-days afield.

Statewide ringtail harvest trends, Utah 1982–2024.



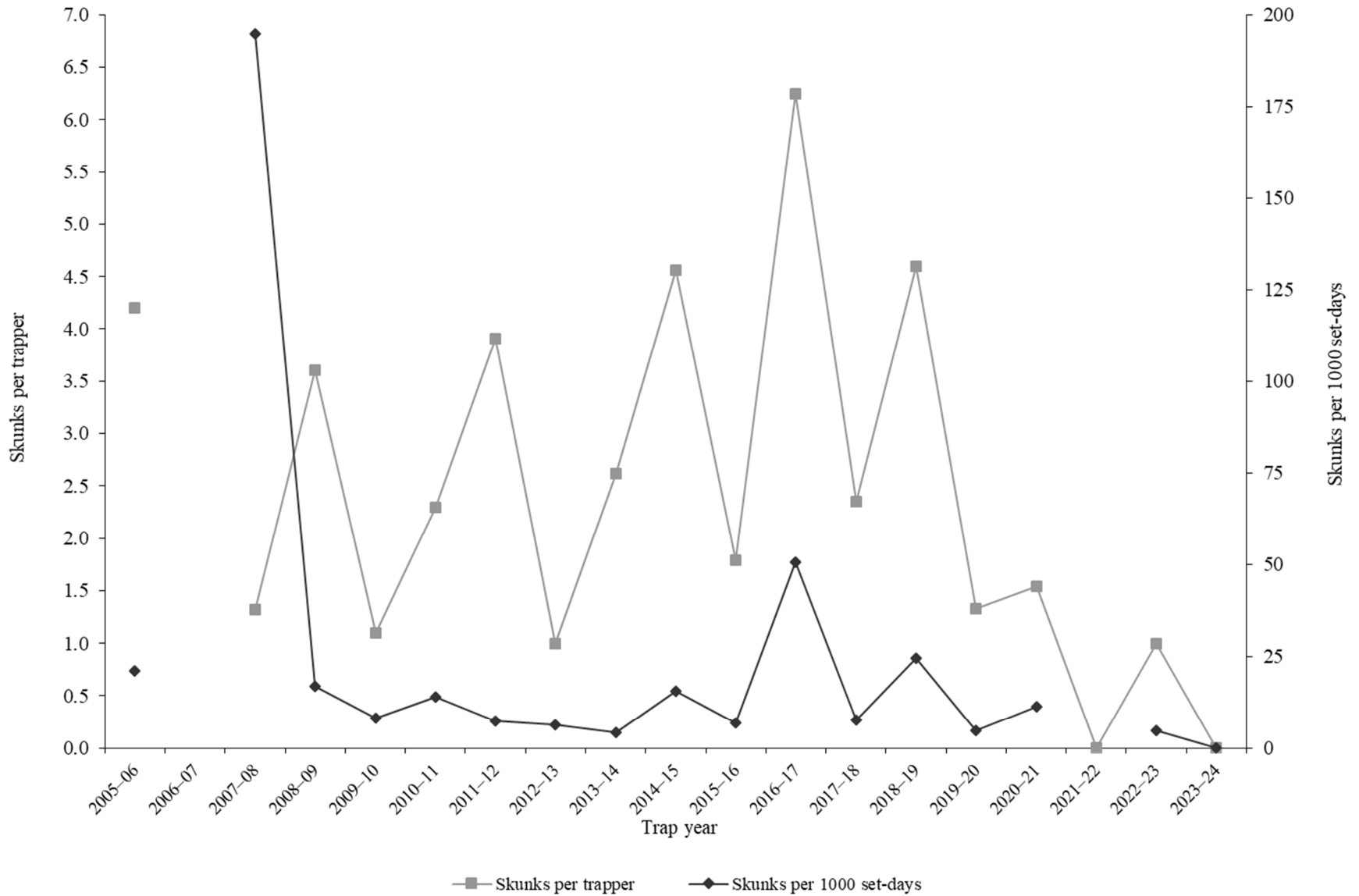
SPOTTED SKUNK

Statewide spotted skunk harvest statistics*, Utah 2005–2024.

Trap year	Trappers afield	Incidental harvest	Trap harvest	Hunt harvest	Set-days / skunk	Skunks / 1000 set-days	Skunks / trapper	Pelt price (\$)
2005–06	34	—	144	—	47	21.2	4.2	5.37
2006–07	106	—	—	—	—	—	—	12.42
2007–08	34	—	45	—	5	194.8	1.3	12.07
2008–09	67	—	238	—	60	16.8	3.6	8.00
2009–10	19	95	21	—	124	8.1	1.1	15.00
2010–11	33	200	76	—	71	14.0	2.3	15.00
2011–12	11	221	14	29	135	7.4	3.9	8.25
2012–13	17	137	17	0	156	6.4	1.0	14.48
2013–14	13	206	17	17	230	4.3	2.6	13.51
2014–15	25	285	114	0	65	15.5	4.6	9.80
2015–16	33	321	55	4	145	6.9	1.8	6.09
2016–17	8	63	50	0	20	50.5	6.3	5.51
2017–18	23	155	47	7	130	7.7	2.3	8.65
2018–19	15	115	69	0	41	24.5	4.6	—
2019–20	6	68	8	0	205	4.9	1.3	—
2020–21	13	26	20	0	87	11.5	1.5	—
2021–22	0	45	0	0	—	—	0.0	—
2022–23	3	20	3	0	210	4.8	1.0	—
2023–24	64	0	8	—	0.0	0.0	64	—
Average	135	52	5	108	23.5	2.4	135	10.32

*Trappers and skunks per trapper include hunters and their harvest. Set-days per skunk and skunks per 1000 set-days are based only on trapping activity, and do not include hunt harvest or hunter-days afield.

Statewide spotted skunk* harvest trends, Utah 2005–2024.



*Prior to 2005–06, spotted skunk harvest and trapping activity were combined with striped skunk.

STRIPED SKUNK

Statewide striped skunk harvest statistics*, Utah 1982–2024.

Trap year	Trappers afield	Incidental harvest	Trap harvest	Hunt harvest	Set-days / skunk	Skunks / 1000 set-days	Skunks / trapper	Pelt price (\$)
1982–83	140	—	1540	—	20	49.9	11.0	3.00
1983–84	144	—	1262	—	45	22.0	8.8	2.85
1984–85	111	—	1097	—	43	23.3	9.9	2.17
1985–86	195	—	1741	—	34	29.1	8.9	—
1986–87	188	—	1851	—	23	43.6	9.8	—
1987–88	185	—	2404	—	14	70.2	13.0	1.05
1988–89	132	—	966	—	19	52.5	7.3	0.30
1989–90	173	—	1289	—	16	63.6	7.5	0.30
1990–91	82	—	645	—	13	78.8	7.9	0.30
1991–92	151	—	1037	—	18	55.2	6.9	4.00
1992–93	132	—	922	—	32	31.1	7.0	5.30
1993–94	175	—	1465	—	16	63.2	8.4	7.35
1994–95	183	—	1438	—	17	58.1	7.9	9.29
1995–96	175	—	1753	—	12	84.9	10.0	6.63
1996–97	142	—	1726	—	15	67.1	12.2	6.00
1997–98	182	—	2890	—	12	80.2	15.9	4.11
1998–99	219	—	3227	—	18	55.1	14.7	5.67
1999–00	188	—	2730	—	19	52.3	14.5	8.50
2000–01	220	—	3857	—	29	34.0	17.5	8.69
2001–02	214	—	1798	—	56	17.8	8.4	6.79
2002–03	237	—	1732	—	42	23.7	7.3	4.24
2003–04	295	—	2305	—	52	19.3	7.8	10.00
2004–05	280	—	4264	—	35	28.7	15.2	4.64
2005–06	95	—	1043	—	79	12.6	11.0	5.37
2006–07	138	—	—	—	—	—	—	6.07
2007–08	144	—	848	—	24	41.0	5.9	4.52
2008–09	143	—	1697	—	36	27.6	11.9	3.15
2009–10	124	1632	1638	—	33	30.0	13.2	6.47
2010–11	154	1136	1597	—	29	35.0	10.4	5.29
2011–12	107	916	602	160	15	65.0	7.1	4.55
2012–13	137	1159	1241	65	108	9.3	9.5	5.01
2013–14	108	1272	654	44	46	21.8	6.5	6.96
2014–15	82	1230	645	16	72	13.9	8.1	4.94
2015–16	111	818	1187	206	60	16.6	12.5	4.40
2016–17	65	727	521	3	45	22.4	8.1	5.95
2017–18	115	919	1198	373	43	23.2	13.7	6.16
2018–19	63	430	1052	82	90	11.1	18.0	12.15
2019–20	70	607	562	83	51	19.6	9.2	9.60
2020–21	94	573	632	46	189	5.3	7.2	—

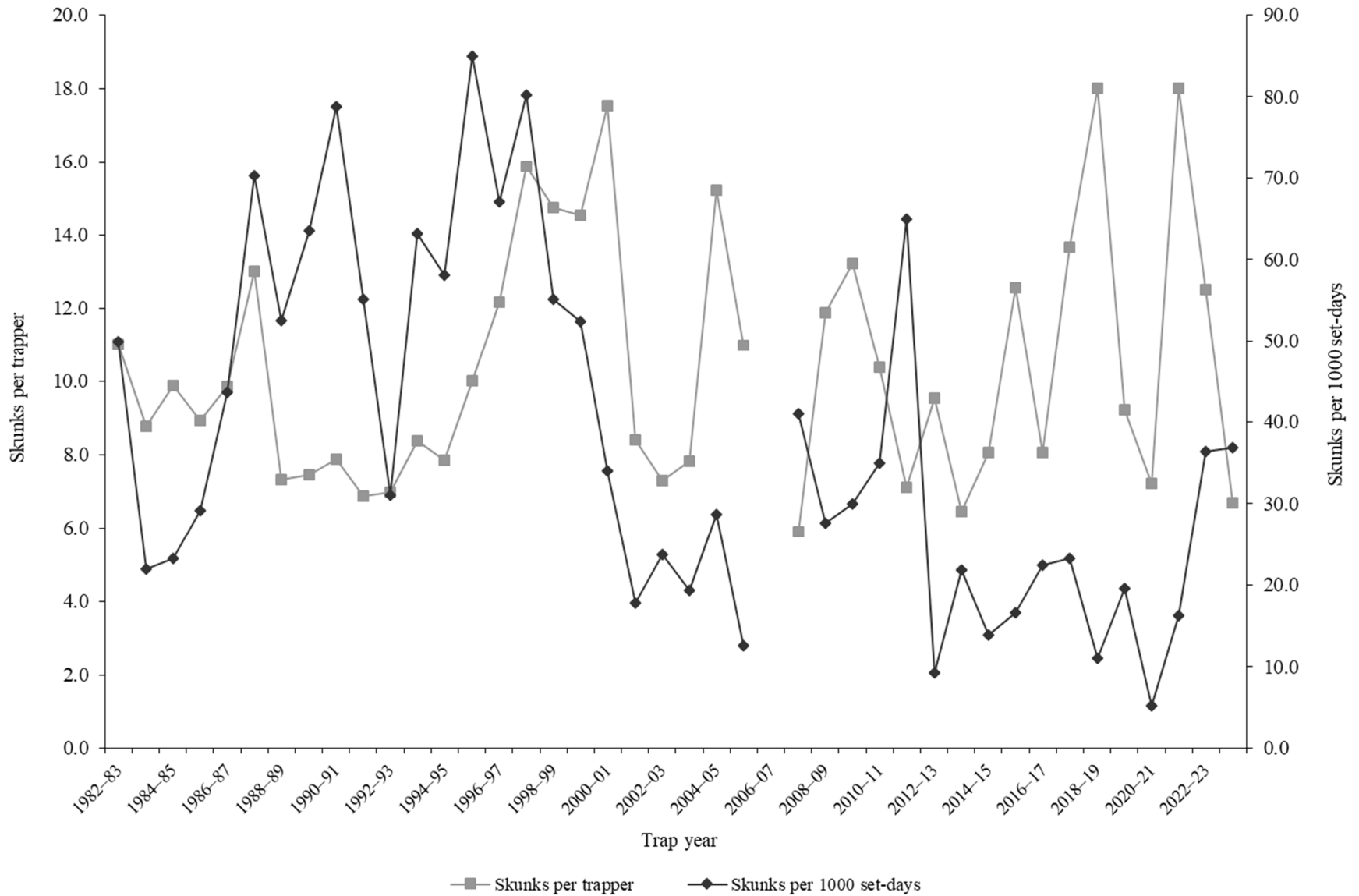
*Trappers and skunks per trapper include hunters and their harvest. Set-days per skunk and skunks per 1000 set-days are based only on trapping activity, and do not include hunt harvest or hunter-days afield.

Statewide striped skunk harvest statistics*, Utah 1982–2024 (continued).

Trap year	Trappers afield	Incidental harvest	Trap harvest	Hunt harvest	Set-days / skunk	Skunks / 1000 set-days	Skunks / trapper	Pelt price (\$)
2021–22	55	741	987	0	61	16.3	18.0	—
2022–23	71	289	717	30	28	36.4	12.5	—
2023–24	64	296	303	19	27	36.9	6.7	10.81
Average	145	850	1489	87	40	37.7	10.4	5.48

*Trappers and skunks per trapper include hunters and their harvest. Set-days per skunk and skunks per 1000 set-days are based only on trapping activity, and do not include hunt harvest or hunter-days afield.

Statewide striped skunk* harvest trends, Utah 1982–2024.



*Prior to 2005–06, harvest and trapping activity included both striped skunk and spotted skunk.

WEASEL

Statewide weasel harvest statistics*, Utah 1982–2024.

Trap year	Trappers afield	Incidental harvest	Trap harvest	Hunt harvest	Set-days / weasel	Weasels / 1000 set-days	Weasels / trapper	Pelt price (\$)
1982–83	19	—	59	—	16	61.5	3.1	1.00
1983–84	22	—	33	—	117	8.5	1.5	0.00
1984–85	46	—	75	—	106	9.4	1.6	0.75
1985–86	33	—	67	—	149	6.7	2.0	0.00
1986–87	50	—	123	—	42	23.6	2.5	1.50
1987–88	61	—	212	—	28	36.1	3.5	1.18
1988–89	24	—	91	—	9	115.0	3.8	0.25
1989–90	25	—	33	—	166	6.0	1.3	0.25
1990–91	14	—	31	—	40	24.8	2.2	0.30
1991–92	17	—	19	—	9	113.1	1.1	0.30
1992–93	24	—	28	—	10	98.6	1.2	0.30
1993–94	20	—	31	—	7	149.0	1.6	5.11
1994–95	18	—	13	—	1189	0.8	0.7	1.57
1995–96	24	—	299	—	69	14.6	12.5	3.08
1996–97	11	—	13	—	24	41.7	1.2	7.40
1997–98	20	—	28	—	111	9.0	1.4	3.03
1998–99	15	—	33	—	157	6.4	2.2	5.50
1999–00	34	—	66	—	16	62.4	1.9	—
2000–01	36	—	155	—	34	29.3	4.3	8.50
2001–02	6	—	13	—	0	—	2.2	—
2002–03	6	—	3	—	39	25.4	0.5	4.76
2003–04	18	—	58	—	73	13.8	3.2	—
2004–05	25	—	85	—	23	43.9	3.4	2.90
2005–06	41	—	190	—	43	23.3	4.6	—
2006–07	49	—	—	—	—	—	—	6.26
2007–08	11	—	15	—	39	25.6	1.3	2.99
2008–09	14	—	11	—	22	44.9	0.8	—
2009–10	29	13	47	—	196	5.1	1.6	7.64
2010–11	23	20	17	—	78	12.8	0.7	7.21
2011–12	25	4	0	21	—	0.0	0.8	4.58
2012–13	27	21	110	0	87	11.5	4.1	—
2013–14	3	10	3	0	12	83.3	1.0	5.00
2014–15	13	13	63	0	51	19.7	4.8	3.89
2015–16	26	15	11	4	258	3.9	0.6	3.06
2016–17	29	8	228	0	93	10.7	7.9	3.55
2017–18	19	7	12	2	1795	0.6	0.7	1.00
2018–19	11	26	139	2	27	37.0	12.8	—
2019–20	2	4	10	0	24	41.7	5.0	9.18
2020–21	16	3	7	0	233	4.3	0.4	—

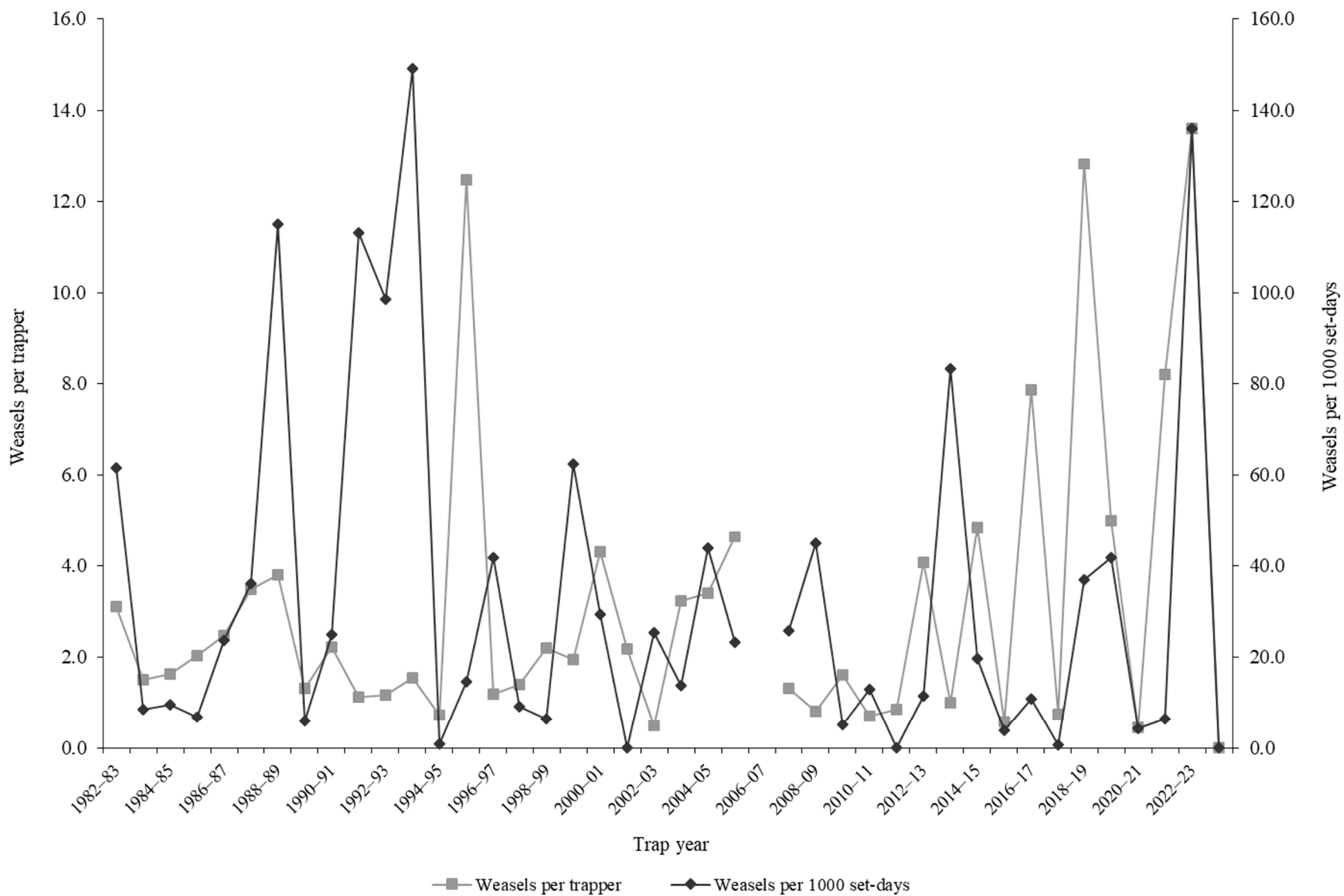
*Trappers and weasels per trapper include hunters and their harvest. Set-days per weasel and weasels per 1000 set-days are based only on trapping activity, and do not include hunt harvest or hunter-days afield.

Statewide weasel harvest statistics*, Utah 1982–2024 (continued).

Trap year	Trappers afield	Incidental harvest	Trap harvest	Hunt harvest	Set-days / weasel	Weasels / 1000 set-days	Weasels / trapper	Pelt price (\$)
2021–22	15	0	122	0	159	6.3	8.2	—
2022–23	17	0	229	0	7	136.0	13.6	—
2023–24	8	0	0	0	—	0.0	0.0	—
Average	23	10	68	2	143	34.2	3.1	3.29

*Trappers and weasels per trapper include hunters and their harvest. Set-days per weasel and weasels per 1000 set-days are based only on trapping activity, and do not include hunt harvest or hunter-days afield.

Statewide weasel harvest trends, Utah 1982–2024.



APPENDIX: UTAH FURBEARER MANAGEMENT ECOREGIONS

