

# RAC AGENDA – November 2013

Revised 11-6-13



1. Approval of Agenda  
- RAC Chair
2. Approval of Minutes  
- RAC Chair
3. Old Business  
- RAC Chair
4. Regional Update  
- DWR Regional Supervisor
5. Bucks, Bulls & OIAL 2014 Season Dates and Application Timeline  
**and amendments to Rule R657-5**  
- Justin Shannon, Wildlife Program Coordinator
6. CWMU Management Plans and Permit Numbers for 2014  
- Scott McFarlane, Wildlife Program Coordinator
7. Landowner Permit Numbers for 2014  
- Scott McFarlane, Wildlife Program Coordinator
8. Utah Hunter Mentoring Program (New Rule)  
- Greg Hansen, Assistant Attorney General
9. Dedicated Hunter Rule Amendments  
- Bryan Christensen, Dedicated Hunter Program Coordinator

**INFORMATIONAL**

**ACTION**

**ACTION**

**ACTION**

**ACTION**

**ACTION**

## **Region Specific Items – to be presented in the specified region only.**

- SRO & CRO Oak Creek Rocky Mountain Bighorn Sheep Management Plan **ACTION**  
- Dustin Schaible, Wildlife Biologist

## **Meeting Locations**

**NR RAC** – Nov. 6th 6:00 PM  
Brigham City Community Center  
24 N. 300 W., Brigham City

**SER RAC** – Nov. 13th 6:30 PM  
John Wesley Powell Museum  
1765 E. Main St, Green River

**CR RAC** – Nov. 7th 6:30 PM  
Springville Public Library  
45 S. Main Street, Springville

**NER RAC** – Nov. 14th 6:00 PM  
Wildlife Resources NER Office  
318 North Vernal Ave., Vernal

**SR RAC** – Nov. 12th 6:00 PM  
Cedar Middle School  
2215 W. Royal Hunte Dr., Cedar City

**Board Meeting** – Dec. 5 - 9:00 AM  
DNR Boardroom  
1594 West North Temple, SLC

# MEMORANDUM

Date: October 28, 2013  
To: Wildlife Board and Regional Advisory Council Members  
From: Justin Shannon, Big Game Coordinator  
SUBJECT: 2014 BBOIAL Season Dates

The attached documents summarize the Division's recommended changes to the current Big Game Guidebook and Rule.

## **BBOIAL season dates:**

See attached tables for details.

## **Big Game Guidebook and Rule change recommendations:**

### **Statewide Changes**

1. We recommend standardizing the definition of "youth" as any person 17 years of age or younger on July 31. This definition would apply for all youth hunting opportunities in Utah.
2. We recommend adding an addendum to the statewide mule deer plan that provides a list of potential units where mule deer may be released during transplants:

Unit 1 (Box Elder)	Unit 19A (West Desert, West)
Unit 11 (Nine Mile)	Unit 20 (Southwest Desert)
Unit 14B (San Juan, Elk Ridge)	Unit 21AB (Fillmore, Oak Creek/Pahvant)
Unit 17C (Wasatch Mtns, Currant Creek)	Unit 24 (Mt Dutton)
3. In May 2013, the Wildlife Board gave the Southern Region and action log item to determine if the Monroe unit required a different hunting strategy for spike elk. The region met with local sportsmen to discuss the issue this fall. As a result, we recommend eliminating the any weapon portion of spike elk hunting on the Monroe unit until the statewide elk plan is approved (roughly 2 years). Archery and Muzzleloader spike elk hunting will still be allowed.
4. We recommend allowing archery hunting of big game on select Waterfowl Management Areas:

Bicknell Bottoms	Clear Lake	Locomotive Springs
Browns Park	Desert Lake	Redmond
5. We recommend altering R657-5 to allow for the use of crossbows, draw-locks, and magnifying scopes on muzzleloaders during the any weapon hunts only. We also recommend altering R657-12 to align with the changes to R-657-5.

### **Southern Region Changes**

1. We recommend modifying the Pine Valley, Virgin River bighorn sheep boundary to be consistent with the deer, elk, and pronghorn unit boundaries.
2. We recommend modifying the Panguitch Lake pronghorn boundary to account for an expanding pronghorn population. The boundary change will include additional Forest Service lands.

3. We recommend modifying the Mt Dutton/Paunsaugunt and Parker Mountain pronghorn boundaries to avoid over harvest of the Johns Valley herd.

### **Southeastern Region Changes**

1. We recommend splitting the Nine Mile, Range Creek bighorn sheep hunt into an early and late hunt (each hunt will be roughly 15 days in Nov). This unit has limited access and the most permits in the State.

### **Northern Region Changes**

1. We recommend modifying the season dates on the Grouse Creek LE elk hunt (Sept 13-21 and Oct 4-31) and including an archery and muzzleloader season to increase bull harvest.
2. We recommend combining units 2, 3, and 4 (Cache, Ogden, Morgan/South Rich) for pronghorn hunting to allow for more areas to hunt if pronghorn stay on private lands.

### **Northeast Region Changes**

1. We recommend expanding the boundary for the Uinta Basin extended archery deer and elk hunt to target resident big game living in low elevation, agricultural lands.
2. We recommend creating a new bison hunt on the Book Cliffs.
3. We recommend splitting the Book Cliffs LE deer hunt into north and south units during the any weapon hunt. This is to address discrepancies in buck to doe ratios in the north and south portions of the Book Cliffs.

### **Central Region Changes**

1. We recommend removing bull elk from the Sanpete Valley Extended Archery elk hunt.
2. We recommend adding a Rocky Mountain bighorn sheep hunt for units 16A and 17A (Wasatch, West and Central Mtns, Nebo).
3. We recommend combining the Wasatch Mtns Lone Peak, Box Elder Peak, and Timpanogos units for mountain goat hunting.

**Boundary description for new hunts or boundary changes on existing hunts are attached in the packet**

## Addendum to the Utah Division of Wildlife Resources Statewide Management Plan for Mule Deer

The purpose of this addendum to the Utah statewide management plan for mule deer is to provide a list of possible transplant sites for mule deer in Utah. The statewide mule deer plan was last revised in 2008, and did not include any information on transplants or identify any mule deer release locations. However, since that time, it has been determined that transplanting mule deer may be a viable management tool to help bolster low or struggling mule deer populations. Additionally, transplanting deer may be helpful to reduce populations that are above population objective or causing habitat damage. The following table and figure identify potential release sites for mule deer in Utah. These sites were chosen because they have adequate deer habitat (summer and winter) with low deer densities, they historically have supported larger deer numbers than they currently are, they are in relatively isolated or remote areas, and they have minimal disease risks or concerns. Before being transplanted, all mule deer will be tested for Chronic Wasting Disease (CWD). If an animal tests positive it will be euthanized and disposed of properly.



Figure A1. Statewide mule transplant locations, Utah 2013.

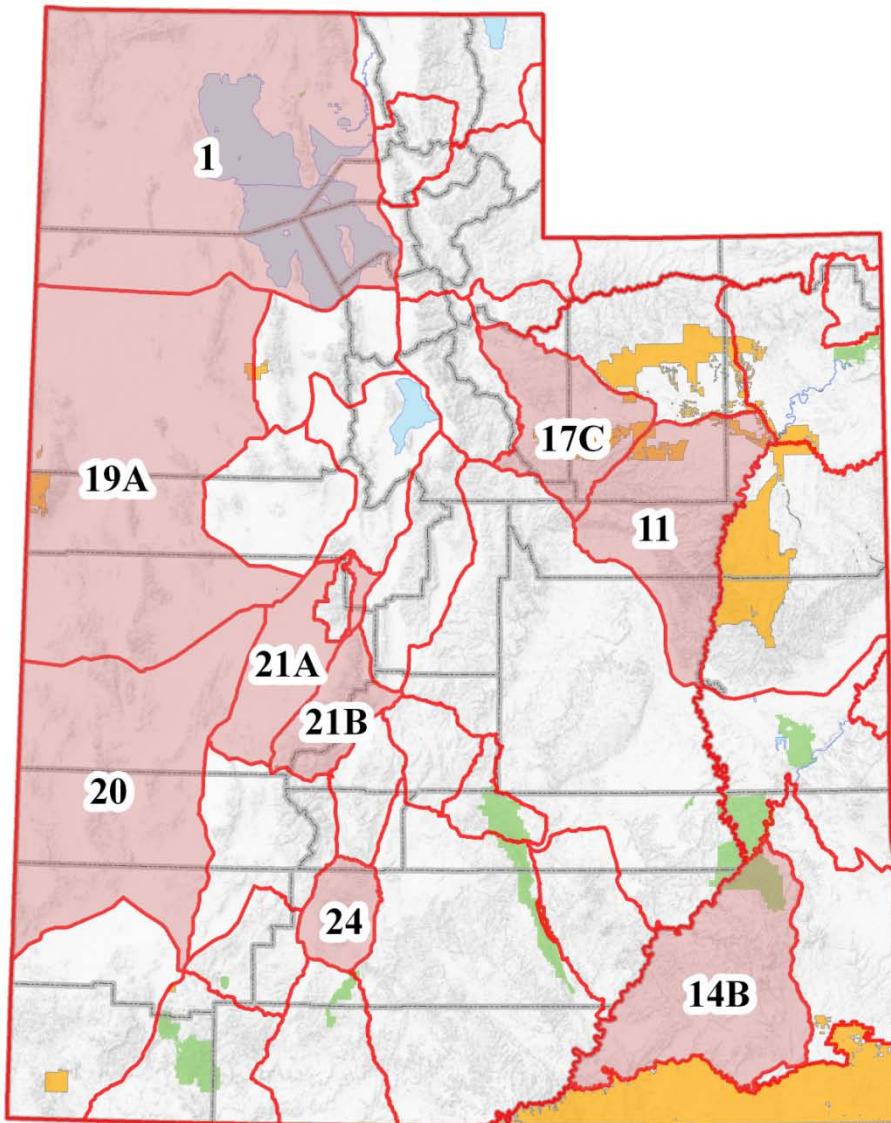


Table A1. Statewide Mule Deer Transplant List, Utah 2013.

Region	Unit	Counties	Release Locations
Northern	1	Box Elder	Box Elder Newfoundland Mountains Pilot Mountains
Northeastern	11A	Nine Mile, Anthro	Duchesne Big Wash Nutters Ridge Sowers Canyon
	17C	Wasatch Mountains, Currant Creek	Duchesne Strawberry River
Central	19A	West Desert	Tooele and Juab Deep Creek Mountains – Tom's Creek Granite Creek Dutch Mountain Gold Hill Northern end of Cedar Mountain
Southeastern	11B	Nine Mile, Range Creek	Carbon and Emery Southern end of Tavaputs Plateau
Southern	24	Mt Dutton	Garfield and Piute East and West Forks of Hunt Creek Deer Creek to Pine Creek Sanford Bench
	21AB	Fillmore, Oak Creek Fillmore, Pahvant	Millard Oak Creek Mountains North of Holden to south of Fillmore
	20	Southwest Desert	Iron, Beaver, and Millard Needles Wah Wah Indian Peaks Range

**ONCE IN A LIFETIME SPECIES**

<b>Bull Moose</b>			2014	2014
Hunt #	Hunt Name	Unit #	Season Dates	Nonres Permits
6000	Cache	2	Sept. 13–Oct. 16	y
6001	Chalk Creek	6	Sept. 13–Oct. 16	n
6002	East Canyon	5	Sept. 13–Oct. 16	y
6003	East Canyon, Morgan-Summit	5	Sept. 13–Oct. 16	n
6004	Kamas	7	Sept. 13–Oct. 16	n
6005	Morgan-South Rich	4	Sept. 13–Oct. 16	n
6006	North Slope, Summit	8	Sept. 13–Oct. 16	y
6007	North Slope, Three Corners/West Daggett	8	Sept. 13–Oct. 16	y
6008	Ogden	3	Sept. 13–Oct. 16	y
6009	South Slope, Diamond Mtn/Vernal	9	Sept. 13–Oct. 16	n
6010	South Slope, Yellowstone	9	Sept. 13–Oct. 16	n
6011	Wasatch Mtns	17	Sept. 13–Oct. 16	y

This unit is compos  
 This unit is compos  
 This unit is compos  
 This unit is compos  
 This unit is compos

†This unit is composed of all or largely private property. Hunters should acquire written permission from the landowner before applying for this hunt.

<b>Bison</b>			2014	2014
Hunt #	Hunt Name	Unit #	Season Dates	Nonres Permits
6500	Antelope Island	1	Dec. 2–Dec. 4	y
6501	Book Cliffs	10	Nov. 1–Nov. 28	n
6502	Book Cliffs, Wild Horse Bench	10	Nov. 29, 2014–Jan. 31, 2015	n
6503	Henry Mtns	15	Nov. 1–Nov. 13	y
6504	Henry Mtns	15	Nov. 15–Nov. 27	y
6505	Henry Mtns	15	Nov. 29–Dec. 14	y
6506	Henry Mtns	15	Dec. 15–Dec. 31	y

Hunter's choice (N  
 Hunter's choice  
 Hunter's choice  
 Hunter's choice  
 Cow only  
 Cow only

<b>Desert Bighorn Sheep</b>			2014	2014
Hunt #	Hunt Name	Unit #	Season Dates	Nonres Permits
6600	Henry Mtns	15	Sept. 13–Nov. 10	n
6601	Kaiparowits, East	26	Sept. 13–Nov. 10	y
6602	Kaiparowits, Escalante	26	Sept. 13–Nov. 10	n
6603	Kaiparowits, West	26	Sept. 13–Nov. 10	n
6604	La Sal, Potash/South Cisco	13	Sept. 13–Nov. 10	n
6605	Pine Valley	30	Oct. 25–Dec. 26	n
6606	San Juan, Lockhart	14	Sept. 13–Nov. 10	n
6607	San Juan, South	14	Sept. 13–Nov. 10	n
6608	San Rafael, Dirty Devil	12	Sept. 13–Nov. 10	n
6609	San Rafael, North	12	Sept. 13–Nov. 10	n
6610	San Rafael, South	12	Sept. 13–Nov. 10	y
6611	Zion	29	Sept. 13–Nov. 10	y

Nonresidents may  
 Nonresidents may  
 New Boundary  
 Nonresidents may

† Nonresidents may hunt all Kaiparowits subunits—Apply for hunt #6601

‡ Nonresidents may hunt both the North and South San Rafael subunits—Apply for hunt #6610

<b>Rocky Mountain Bighorn Sheep</b>			2014	2014
Hunt #	Hunt Name	Unit #	Season Dates	Nonres Permits
6700	Antelope Island	1	Nov. 14–Nov. 20	n

6701	Book Cliffs, South	10	Nov. 1–Nov. 30	y	
6702	Box Elder, Newfoundland Mtn	1	Nov. 1–Nov. 30	y	
6703	Box Elder, Pilot Mtn	1	Aug. 31–Oct. 30	n	Permits split betwe
6704	Central Mtns, Nebo/Wasatch, West	16A, 17A	Nov. 1–Nov. 30	n	New Hunt and bou
6705	Nine Mile, Range Creek (early)	11	Nov. 1–Nov. 14	y	New Hunt
6706	Nine Mile, Range Creek (late)	11	Nov. 15–Nov. 30	y	New Hunt
6707	North Slope, Three Corners Bare Top	8	Sept. 15–Nov. 30	n	
6708	North Slope, West Daggett	8	Nov. 1–Nov. 30	n	
6709	Stansbury	19	Nov. 1–Nov. 30	n	

<b>Rocky Mountain Goat</b>			<b>2014</b>	<b>2014</b>	
<b>Hunt #</b>	<b>Hunt Name</b>	<b>Unit #</b>	<b>Season Dates</b>	<b>Nonres Permits</b>	
6800	Beaver	22	Sept. 6–Sept. 19	y	
6801	Beaver	22	Sept. 20–Oct. 12	y	
6802	Beaver	22	Sept. 29–Oct. 12	y	Female goat only
6803	Central Mtns, Nebo	16	Sept. 8–Oct. 12	n	
6804	Chalk Creek/Kamas	6/7	Sept. 8–Oct. 12	n	
6805	North Slope/South Slope, High Uintas Central	8/9	Sept. 8–Oct. 12	y	
6806	North Slope/South Slope, High Uintas East	8/9	Sept. 8–Oct. 12	n	
6807	North Slope/South Slope, High Uintas Leidy Peak	8/9	Sept. 8–Oct. 12	n	
6808	North Slope/South Slope, High Uintas West	8/9	Sept. 8–Oct. 12	y	
6809	Ogden, Willard Peak	3	Sept. 8–Oct. 12	y	
6810	Ogden, Willard Peak	3	Sept. 22–Oct. 12	y	
6811	Ogden, Willard Peak	3	Sept. 29–Oct. 12	y	Female goat only
6812	Wasatch Mtns (Box Elder Peak, Lone Peak, Timp)	17	Sept. 8–Oct. 12	y	New Hunt and bou
6813	Wasatch Mtns, Provo Peak	17	Sept. 8–Oct. 12	n	

Nonresidents may hunt all Wasatch Mtns subunits-Apply for hunt #6812

(y) At least one nonresident permit in 2014

(n) No nonresident permit in 2014

**NOTE: Permit Numbers will be determined in May 2014**

**General Season Buck Deer**

**General Season Archery Hunts**

Hunt #	Hunt Name	Unit #	2014	2014
			Season Dates	Nonres Permits
1500	Beaver	22	Aug. 16–Sept. 12	y
1501	Box Elder	1	Aug. 16–Sept. 12	y
1502	Cache	2	Aug. 16–Sept. 12	y
1503	Central Mtns, Manti/San Rafael	12/16B/16C	Aug. 16–Sept. 12	y
1504	Central Mtns, Nebo	16A	Aug. 16–Sept. 12	y
1505	Chalk Creek/East Canyon/Morgan-South Rich	4/5/6	Aug. 16–Sept. 12	y
1506	Fillmore, Oak Creek	21A	Aug. 16–Sept. 12	y
1507	Fillmore, Pahvant	21B	Aug. 16–Sept. 12	y
1508	Kamas	7	Aug. 16–Sept. 12	y
1509	La Sal, La Sal Mtns	13A	Aug. 16–Sept. 12	y
1510	Monroe	23	Aug. 16–Sept. 12	y
1511	Mt Dutton	24	Aug. 16–Sept. 12	y
1512	Nine Mile	11	Aug. 16–Sept. 12	y
1513	North Slope	8	Aug. 16–Sept. 12	y
1514	Ogden	3	Aug. 16–Sept. 12	y
1515	Oquirrh-Stansbury	18	Aug. 16–Sept. 12	y
1516	Panguitch Lake	28	Aug. 16–Sept. 12	y
1517	Pine Valley	30	Aug. 16–Sept. 12	y
1518	Plateau, Boulder/Kaiparowits	25C/26	Aug. 16–Sept. 12	y
1519	Plateau, Fishlake	25A	Aug. 16–Sept. 12	y
1520	Plateau, Thousand Lakes	25B	Aug. 16–Sept. 12	y
1521	San Juan, Abajo Mtns	14A	Aug. 16–Sept. 12	y
1522	South Slope, Bonanza/Vernal	9B/9D	Aug. 16–Sept. 12	y
1523	South Slope, Yellowstone	9A	Aug. 16–Sept. 12	y
1524	Southwest Desert	20	Aug. 16–Sept. 12	y
1525	Wasatch Mtns, Avintaquin/Currant Creek	17B/17C	Aug. 16–Sept. 12	y
1526	Wasatch Mtns, West	17A	Aug. 16–Sept. 12	y
1527	West Desert, Tintic	19C	Aug. 16–Sept. 12	y
1528	West Desert, West	19A	Aug. 16–Sept. 12	y
1529	Zion	29	Aug. 16–Sept. 12	y

**General Season Any Legal Weapon Hunts**

Hunt #	Hunt Name	Unit #	2014	2014
			Season Dates	Nonres Permits
1530	Beaver	22	Oct. 18–Oct. 26	y
1531	Box Elder	1	Oct. 18–Oct. 26	y
1532	Cache	2	Oct. 18–Oct. 26	y
1533	Central Mtns, Manti/San Rafael	12/16B/16C	Oct. 18–Oct. 26	y
1534	Central Mtns, Nebo	16A	Oct. 18–Oct. 26	y
1535	Chalk Creek/East Canyon/Morgan-South Rich	4/5/6	Oct. 18–Oct. 26	y
1536	Fillmore, Oak Creek	21A	Oct. 18–Oct. 26	y
1537	Fillmore, Pahvant	21B	Oct. 18–Oct. 26	y
1538	Kamas	7	Oct. 18–Oct. 26	y
1539	La Sal, La Sal Mtns	13A	Oct. 18–Oct. 26	y
1540	Monroe	23	Oct. 18–Oct. 26	y
1541	Mt Dutton	24	Oct. 18–Oct. 26	y
1542	Nine Mile	11	Oct. 18–Oct. 26	y
1543	North Slope	8	Oct. 18–Oct. 26	y
1544	Ogden	3	Oct. 18–Oct. 26	y
1545	Oquirrh-Stansbury	18	Oct. 18–Oct. 26	y
1546	Panguitch Lake	28	Oct. 18–Oct. 26	y
1547	Pine Valley	30	Oct. 18–Oct. 26	y
1548	Plateau, Boulder/Kaiparowits	25C/26	Oct. 18–Oct. 26	y
1549	Plateau, Fishlake	25A	Oct. 18–Oct. 26	y
1550	Plateau, Thousand Lakes	25B	Oct. 18–Oct. 26	y
1551	San Juan, Abajo Mtns	14A	Oct. 18–Oct. 26	y
1552	South Slope, Bonanza/Vernal	9B/9D	Oct. 18–Oct. 26	y
1553	South Slope, Yellowstone	9A	Oct. 18–Oct. 26	y
1554	Southwest Desert	20	Oct. 18–Oct. 26	y
1555	Wasatch Mtns, Avintaquin/Currant Creek	17B/17C	Oct. 18–Oct. 26	y
1556	Wasatch Mtns, West	17A	Oct. 18–Oct. 26	y
1557	West Desert, Tintic	19C	Oct. 18–Oct. 26	y
1558	West Desert, West	19A	Oct. 18–Oct. 26	y
1559	Zion	29	Oct. 18–Oct. 26	y

**General Season Muzzleloader Hunts**

			2014	2014
Hunt #	Hunt Name	Unit #	Season Dates	Nonres Permits
1560	Beaver	22	Sept. 24–Oct. 2	y
1561	Box Elder	1	Sept. 24–Oct. 2	y
1562	Cache	2	Sept. 24–Oct. 2	y
1563	Central Mtns, Manti/San Rafael	12/16B/16C	Sept. 24–Oct. 2	y
1564	Central Mtns, Nebo	16A	Sept. 24–Oct. 2	y
1565	Chalk Creek/East Canyon/Morgan-South Rich	4/5/6	Sept. 24–Oct. 2	y
1566	Fillmore, Oak Creek	21A	Sept. 24–Oct. 2	y
1567	Fillmore, Pahvant	21B	Sept. 24–Oct. 2	y
1568	Kamas	7	Sept. 24–Oct. 2	y
1569	La Sal, La Sal Mtns	13A	Sept. 24–Oct. 2	y
1570	Monroe	23	Sept. 24–Oct. 2	y
1571	Mt Dutton	24	Sept. 24–Oct. 2	y
1572	Nine Mile	11	Sept. 24–Oct. 2	y
1573	North Slope	8	Sept. 24–Oct. 2	y
1574	Ogden	3	Sept. 24–Oct. 2	y
1575	Oquirrh-Stansbury	18	Sept. 24–Oct. 2	y
1576	Panguitch Lake	28	Sept. 24–Oct. 2	y
1577	Pine Valley	30	Sept. 24–Oct. 2	y
1578	Plateau, Boulder/Kaiparowits	25C/26	Sept. 24–Oct. 2	y
1579	Plateau, Fishlake	25A	Sept. 24–Oct. 2	y
1580	Plateau, Thousand Lakes	25B	Sept. 24–Oct. 2	y
1581	San Juan, Abajo Mtns	14A	Sept. 24–Oct. 2	y
1582	South Slope, Bonanza/Vernal	9B/9D	Sept. 24–Oct. 2	y
1583	South Slope, Yellowstone	9A	Sept. 24–Oct. 2	y
1584	Southwest Desert	20	Sept. 24–Oct. 2	y
1585	Wasatch Mtns, Avintaquin/Currant Creek	17B/17C	Sept. 24–Oct. 2	y
1586	Wasatch Mtns, West	17A	Sept. 24–Oct. 2	y
1587	West Desert, Tintic	19C	Sept. 24–Oct. 2	y
1588	West Desert, West	19A	Sept. 24–Oct. 2	y
1589	Zion	29	Sept. 24–Oct. 2	y

**Premium Limited Entry Buck Deer**

**Premium Archery Hunts**

			2014	2014
Hunt #	Hunt Name	Unit #	Season Dates	Nonres Permits
1000	Henry Mtns	15	Aug. 16–Sept. 12	y
1001	Paunsaugant	27	Aug. 16–Sept. 12	y

**Premium Any Legal Weapon Hunts**

			2014	2014
Hunt #	Hunt Name	Unit #	Season Dates	Nonres Permits
1002	Antelope Island	1	Nov. 14–Nov. 20	n
1003	Henry Mtns	15	Oct. 18–Oct. 26	y
1004	Paunsaugant	27	Oct. 18–Oct. 26	y

**Premium muzzleloader Hunts**

			2014	2014
Hunt #	Hunt Name	Unit #	Season Dates	Nonres Permits
1005	Henry Mtns	15	Sept. 24–Oct. 2	y
1006	Paunsaugant	27	Sept. 24–Oct. 2	y

**Management Buck Hunt**

			2014	2014
Hunt #	Hunt Name	Unit #	Season Dates	Nonres Permits
1007	Henry Mtns	15	Oct. 27–Oct. 31	y
1008	Paunsaugant	27	Oct. 29–Nov. 2	y

**Limited Entry Buck Deer**

**Limited Entry Archery Hunts**

			2014	2014
Hunt #	Hunt Name	Unit #	Season Dates	Nonres Permits
1009	Book Cliffs	10	Aug. 16–Sept. 12	y
1010	Fillmore, Oak Creek LE	21C	Aug. 16–Sept. 12	y
1011	La Sal, Dolores Triangle	13B	Nov. 1–Nov. 14	n
1012	San Juan, Elk Ridge	14B	Aug. 16–Sept. 12	y
1013	South Slope, Diamond Mtn	9C	Aug. 16–Sept. 12	y

USFS lands west of I-15 only

1014	West Desert, Vernon	19B	Aug. 16–Sept. 12	y
------	---------------------	-----	------------------	---

**Limited Entry Any Legal Weapon Hunts**

Hunt #	Hunt Name	Unit #	2014	2014
			Season Dates	Nonres Permits
1015	Book Cliffs, North	10A/10C	Oct. 18–Oct. 26	y
1016	Book Cliffs, South	10B	Oct. 18–Oct. 26	y
1017	Fillmore, Oak Creek LE	21C	Oct. 18–Oct. 26	y
1018	La Sal, Dolores Triangle	13B	Nov. 15–Nov. 23	y
1019	San Juan, Elk Ridge	14B	Oct. 18–Oct. 26	y
1020	South Slope, Diamond Mtn	9C	Oct. 18–Oct. 26	y
1021	West Desert, Vernon	19B	Oct. 18–Oct. 26	y

New Hunt and Boundary  
 New Hunt and Boundary  
 USFS lands west of I-15 only

**Limited Entry Muzzleloader Hunts**

Hunt #	Hunt Name	Unit #	2014	2014
			Season Dates	Nonres Permits
1022	Book Cliffs	10	Sept. 24–Oct. 2	y
1023	Cache, Crawford Mtn	2D	Nov. 15–Nov. 30	y
1024	Fillmore, Oak Creek LE	21C	Sept. 24–Oct. 2	y
1025	La Sal, Dolores Triangle	13B	Nov. 26–Dec. 4	n
1026	San Juan, Elk Ridge	14B	Sept. 24–Oct. 2	y
1027	South Slope, Diamond Mtn	9C	Sept. 24–Oct. 2	y
1028	West Desert, Vernon	19B	Sept. 24–Oct. 2	y

USFS lands west of I-15 only

(y) At least one nonresident permit in 2014  
 (n) No nonresident permit in 2014

**NOTE: Permit Numbers will be determined in May 2014**

**The 2014 DWR General Season Elk Dates Recommendation**

<b>Archery Spike</b>	<b>Aug. 16–Sep. 5</b>
<b>Archery Any Bull</b>	<b>Aug. 16–Sep. 12</b>
<b>Muzzleloader</b>	<b>Oct. 29–Nov. 6</b>
<b>Rifle</b>	<b>Oct. 4–Oct. 16</b>
<b>Youth General Any Bull</b>	<b>Sep. 13–Sep. 21</b>
<b>Youth Late Season Any Bull</b>	<b>Nov. 29 2014–Jan 15 2015</b>

**Limited Entry Bull Elk**

**Archery Hunts**

Hunt #	Hunt Name	Unit #	2014	2014
			Season Dates	Nonres Permits
3000	Beaver	22	Aug. 16–Sept. 12	y
3001	Book Cliffs, Bitter Creek/South	10	Aug. 16–Sept. 12	y
3002	Book Cliffs, Little Creek Roadless	10	Aug. 16–Sept. 12	y
3003	Box Elder, Grouse Creek	1	Aug. 16–Sept. 12	y
3004	Cache, Meadowville	2	Aug. 16–Sept. 12	y
3005	Cache, North	2	Aug. 16–Sept. 12	y
3006	Cache, South	2	Aug. 16–Sept. 12	y
3007	Central Mtns, Manti	16	Aug. 16–Sept. 12	y
3008	Central Mtns, Nebo	16	Aug. 16–Sept. 12	y
3009	Fillmore, Pahvant	21	Aug. 16–Sept. 12	y
3010	La Sal, La Sal Mtns	13	Aug. 16–Sept. 12	y
3011	Monroe	23	Aug. 16–Sept. 12	y
3012	Mt Dutton	24	Aug. 16–Sept. 12	y
3013	Nine Mile, Anthro	11	Aug. 16–Sept. 12	n
3014	North Slope, Three Corners	8	Aug. 16–Sept. 12	y
3015	Oquirrh-Stansbury	18	Aug. 16–Sept. 12	y
3016	Panguitch Lake	28	Aug. 16–Sept. 12	y
3017	Paunsaugunt	27	Aug. 16–Sept. 12	y
3018	Plateau, Boulder/Kaiparowits	25/26	Aug. 16–Sept. 12	y
3019	Plateau, Fishlake/Thousand Lakes	25	Aug. 16–Sept. 12	y
3020	San Juan	14	Aug. 16–Sept. 12	y
3021	South Slope, Diamond Mtn	9	Aug. 16–Sept. 12	y
3022	Southwest Desert	20	Aug. 16–Sept. 12	y
3023	Wasatch Mtns	17	Aug. 16–Sept. 12	y
3024	West Desert, Deep Creek	19	Aug. 16–Sept. 12	y

**Any legal weapon (rifle) hunts**

Hunt #	Hunt Name	Unit #	2014	2014
			Season Dates	Nonres Permits
3025	Beaver	22	Sept. 13–Sept. 21	y
3026	Beaver	22	Nov. 8–Nov. 16	y
3027	Book Cliffs, Bitter Creek/South	10	Sept. 13–Sept. 21	y
3028	Book Cliffs, Bitter Creek/South	10	Nov. 8–Nov. 16	y
3029	Book Cliffs, Little Creek Roadless	10	Sept. 13–Sept. 21	y
3030	Box Elder, Grouse Creek	1	Sept. 13–Sept. 21 & Oct. 4–Oct. 28	y
3031	Box Elder, Pilot Mtn	1	Sept. 13–Oct. 3	n
3032	Cache, Meadowville	2	Sept. 13–Sept. 21	y
3033	Cache, Meadowville	2	Nov. 8–Nov. 16	y
3034	Cache, North	2	Sept. 13–Sept. 21	y
3035	Cache, North	2	Nov. 8–Nov. 16	y
3036	Cache, South	2	Sept. 13–Sept. 21	y
3037	Cache, South	2	Nov. 8–Nov. 16	y
3038	Central Mtns, Manti	16	Sept. 13–Sept. 21	y
3039	Central Mtns, Manti	16	Nov. 8–Nov. 16	y
3040	Central Mtns, Nebo	16	Sept. 13–Sept. 21	y
3041	Central Mtns, Nebo	16	Nov. 8–Nov. 16	y
3042	Fillmore, Pahvant	21	Sept. 13–Sept. 21	y
3043	Fillmore, Pahvant	21	Nov. 8–Nov. 16	y



3044	La Sal, Dolores Triangle	13	Dec. 6–Jan. 31	n
3045	La Sal, La Sal Mtns	13	Sept. 13–Sept. 21	y
3046	La Sal, La Sal Mtns	13	Nov. 8–Nov. 16	y
3047	Monroe	23	Sept. 13–Sept. 21	y
3048	Monroe	23	Nov. 8–Nov. 16	y
3049	Mt Dutton	24	Sept. 13–Sept. 21	y
3050	Mt Dutton	24	Nov. 8–Nov. 16	y
3051	Nine Mile, Anthro	11	Sept. 13–Sept. 21	y
3052	Nine Mile, Anthro	11	Nov. 8–Nov. 16	y
3053	North Slope, Three Corners	8	Oct. 1–Oct. 14	y
3054	Oquirrh-Stansbury	18	Sept. 13–Sept. 21	y
3055	Oquirrh-Stansbury	18	Nov. 8–Nov. 16	y
3056	Panguitch Lake	28	Sept. 13–Sept. 21	y
3057	Panguitch Lake	28	Nov. 8–Nov. 16	y
3058	Paunsaugunt	27	Sept. 13–Sept. 21	y
3059	Paunsaugunt	27	Nov. 8–Nov. 16	y
3060	Plateau, Boulder/Kaiparowits	25/26	Sept. 13–Sept. 21	y
3061	Plateau, Boulder/Kaiparowits	25/26	Nov. 8–Nov. 16	y
3062	Plateau, Fishlake/Thousand Lakes	25	Sept. 13–Sept. 21	y
3063	Plateau, Fishlake/Thousand Lakes	25	Nov. 8–Nov. 16	y
3064	San Juan	14	Sept. 13–Sept. 21	y
3065	San Juan	14	Nov. 8–Nov. 16	y
3066	South Slope, Diamond Mtn	9	Sept. 13–Sept. 21	y
3067	South Slope, Diamond Mtn	9	Oct. 4–Oct. 16	y
3068	Southwest Desert	20	Sept. 13–Sept. 21	y
3069	Southwest Desert	20	Nov. 8–Nov. 16	y
3070	Wasatch Mtns	17	Sept. 13–Sept. 21	y
3071	Wasatch Mtns	17	Nov. 8–Nov. 16	y
3072	West Desert, Deep Creek	19	Sept. 13–Sept. 21	y
3073	West Desert, Deep Creek	19	Nov. 8–Nov. 16	y

#### Muzzleloader Hunts

Hunt #	Hunt Name	Unit #	2014	2014
			Season Dates	Nonres Permits
3074	Beaver	22	Sept. 24–Oct. 2	y
3075	Book Cliffs, Bitter Creek/South	10	Sept. 24–Oct. 2	y
3076	Book Cliffs, Little Creek Roadless	10	Sept. 24–Oct. 2	y
3077	Box Elder, Grouse Creek	1	Sept. 24–Oct. 2	y
3078	Cache, Meadowville	2	Sept. 24–Oct. 2	y
3079	Cache, North	2	Sept. 24–Oct. 2	y
3080	Cache, South	2	Sept. 24–Oct. 2	y
3081	Central Mtns, Manti	16	Sept. 24–Oct. 2	y
3082	Central Mtns, Nebo	16	Sept. 24–Oct. 2	y
3083	Fillmore, Pahvant	21	Sept. 24–Oct. 2	y
3084	La Sal, La Sal Mtns	13	Sept. 24–Oct. 2	y
3085	Monroe	23	Sept. 24–Oct. 2	n
3086	Mt Dutton	24	Sept. 24–Oct. 2	y
3087	Nine Mile, Anthro	11	Sept. 24–Oct. 2	n
3088	North Slope, Three Corners	8	Sept. 24–Oct. 2	y
3089	Oquirrh-Stansbury	18	Sept. 24–Oct. 2	y
3090	Panguitch Lake	28	Sept. 24–Oct. 2	y
3091	Paunsaugunt	27	Sept. 24–Oct. 2	y
3092	Plateau, Boulder/Kaiparowits	25/26	Sept. 24–Oct. 2	y
3093	Plateau, Fishlake/Thousand Lakes	25	Sept. 24–Oct. 2	y
3094	San Juan	14	Sept. 24–Oct. 2	y
3095	South Slope, Diamond Mtn	9	Sept. 24–Oct. 2	y
3096	Southwest Desert	20	Sept. 24–Oct. 2	y
3097	Wasatch Mtns	17	Sept. 24–Oct. 2	y
3098	West Desert, Deep Creek	19	Sept. 24–Oct. 2	y

New Hunt

#### Premium Hunts

			2014	2014
--	--	--	------	------

Hunt #	Hunt Name	Unit #	Season Dates	Nonres Permits
3099	Beaver	22	All Limited Entry Seasons	n
3100	Book Cliffs, Bitter Creek/South	10	All Limited Entry Seasons	n
3101	Book Cliffs, Little Creek Roadless	10	All Limited Entry Seasons	n
3102	Cache, Meadowville	2	All Limited Entry Seasons	n
3103	Cache, North	2	All Limited Entry Seasons	n
3104	Cache, South	2	All Limited Entry Seasons	n
3105	Central Mtns, Manti	16	All Limited Entry Seasons	y
3106	Central Mtns, Nebo	16	All Limited Entry Seasons	n
3107	Fillmore, Pahvant	21	All Limited Entry Seasons	n
3108	La Sal, La Sal Mtns	13	All Limited Entry Seasons	n
3109	Monroe	23	All Limited Entry Seasons	n
3110	Mt Dutton	24	All Limited Entry Seasons	n
3111	Nine Mile, Anthro	11	All Limited Entry Seasons	n
3112	North Slope, Three Corners	8	All Limited Entry Seasons	n
3113	Oquirrh-Stansbury	18	All Limited Entry Seasons	n
3114	Panguitch Lake	28	All Limited Entry Seasons	n
3115	Paunsaugunt	27	All Limited Entry Seasons	n
3116	Plateau, Boulder/Kaiparowits	25/26	All Limited Entry Seasons	n
3117	Plateau, Fishlake/Thousand Lakes	25	All Limited Entry Seasons	y
3118	San Juan	14	All Limited Entry Seasons	n
3119	South Slope, Diamond Mtn	9	All Limited Entry Seasons	n
3120	Southwest Desert	20	All Limited Entry Seasons	n
3121	Wasatch Mtns	17	All Limited Entry Seasons	y
3122	West Desert, Deep Creek	19	All Limited Entry Seasons	n

#### Youth Any Bull Hunts

			2014	2014
Hunt #	Hunt Name	Unit #	Season Dates	Nonres Permits
3498	Youth General Any Bull Elk	N/A	Sept. 13–Sept. 21	y
3499	Youth Late Season Any Bull	9	Nov. 29, 2014–Jan. 15, 2015	y

(y) At least one nonresident permit in 2014

(n) No nonresident permit in 2014

**NOTE: Permit Numbers will be determined in May 2014**

## Limited Entry Pronghorn

### Archery Hunts

Hunt #	Hunt Name	Unit #	2014	2014	
			Season Dates	Nonres Permits	
5000	Beaver	22	Aug. 16–Sept. 12	n	
5001	Book Cliffs, Bitter Creek	10	Aug. 16–Sept. 12	n	
5002	Book Cliffs, South	10	Aug. 16–Sept. 12	n	
5003	Box Elder, Pilot Mtn	1	Aug. 16–Sept. 12	n	
5004	Box Elder, Promontory	1	Aug. 16–Sept. 12	n	
5005	Box Elder, Puddle Valley	1	Aug. 16–Sept. 12	n	
5006	Box Elder, Snowville	1	Aug. 16–Sept. 12	n	
5007	Cache/Morgan-South Rich/Ogden	2,3,4	Aug. 16–Sept. 12	y	New Hunt and Boundary
5008	Fillmore, Black Rock	21	Aug. 16–Sept. 12	n	
5009	Mt Dutton/Paunsaugunt	24/27	Aug. 16–Sept. 12	y	New Boundary
5010	Nine Mile, Anthro	11	Aug. 16–Sept. 12	n	
5011	North Slope, Three Corners/West Daggett	8	Aug. 16–Sept. 12	y	
5012	Pine Valley	30	Aug. 16–Sept. 12	y	
5013	Plateau	25	Aug. 16–Sept. 12	y	New Boundary
5014	San Rafael, North	12	Aug. 16–Sept. 12	y	
5015	South Slope, Bonanza/Diamond Mtn	9	Aug. 16–Sept. 12	n	
5016	South Slope, Vernal	9	Aug. 16–Sept. 12	n	
5017	Southwest Desert	20	Aug. 16–Sept. 12	y	
5018	West Desert, Riverbed	19	Aug. 16–Sept. 12	y	
5019	West Desert, Rush Valley	19	Aug. 16–Sept. 12	n	
5020	West Desert, Snake Valley	19	Aug. 16–Sept. 12	n	

### Muzzleloader hunts

Hunt #	Hunt Name	Unit #	2014	2014	
			Season Dates	Nonres Permits	
5021	Plateau	25	Sept. 24–Oct. 2	y	New Boundary

### Any Legal Weapon Hunts

Hunt #	Hunt Name	Unit #	2014	2014	
			Season Dates	Nonres Permits	
5022	Beaver	22	Sept. 13–Sept. 21	y	
5023	Book Cliffs, Bitter Creek	10	Sept. 13–Sept. 21	y	
5024	Book Cliffs, South	10	Sept. 13–Sept. 21	y	
5025	Box Elder, Pilot Mtn	1	Sept. 13–Sept. 21	y	
5026	Box Elder, Promontory	1	Sept. 13–Sept. 21	y	
5027	Box Elder, Puddle Valley	1	Sept. 13–Sept. 21	y	
5028	Box Elder, Snowville	1	Sept. 13–Sept. 21	y	
5029	Cache/Morgan-South Rich/Ogden	2,3,4	Aug. 16–Sept. 12	y	New Hunt and Boundary
5030	Fillmore, Black Rock	21	Sept. 13–Sept. 21	n	
5031	Kaiparowits	26	Sept. 13–Sept. 21	n	
5032	La Sal, Potash/South Cisco	13	Sept. 13–Sept. 21	n	
5033	Mt Dutton/Paunsaugunt, Johns Valley (buck prong	24/27	Sept. 13–Sept. 21	y	New Boundary
5034	Nine Mile, Anthro	11	Sept. 13–Sept. 21	y	
5035	Nine Mile, Range Creek	11	Sept. 13–Sept. 21	y	
5036	North Slope, Summit	8	Sept. 13–Sept. 21	n	
5037	North Slope, Three Corners/West Daggett	8	Sept. 13–Sept. 21	y	
5038	Panguitch Lake	28	Sept. 13–Sept. 21	y	New Boundary
5039	Pine Valley	30	Sept. 13–Sept. 21	y	
5040	Plateau	25	Sept. 13–Sept. 21	y	New Boundary
5041	San Juan, Hatch Point	14	Sept. 13–Sept. 21	n	
5042	San Rafael, Desert	12	Sept. 13–Sept. 21	y	
5043	San Rafael, North	12	Sept. 13–Sept. 21	y	
5044	South Slope, Bonanza/Diamond Mtn	9	Sept. 13–Sept. 21	y	
5045	South Slope, Vernal	9	Sept. 13–Sept. 21	y	
5046	Southwest Desert	20	Sept. 13–Sept. 21	y	
5047	West Desert, Riverbed	19	Sept. 13–Sept. 21	y	
5048	West Desert, Rush Valley	19	Sept. 13–Sept. 21	y	
5049	West Desert, Snake Valley	19	Sept. 13–Sept. 21	y	

(y) At least one nonresident permit in 2014

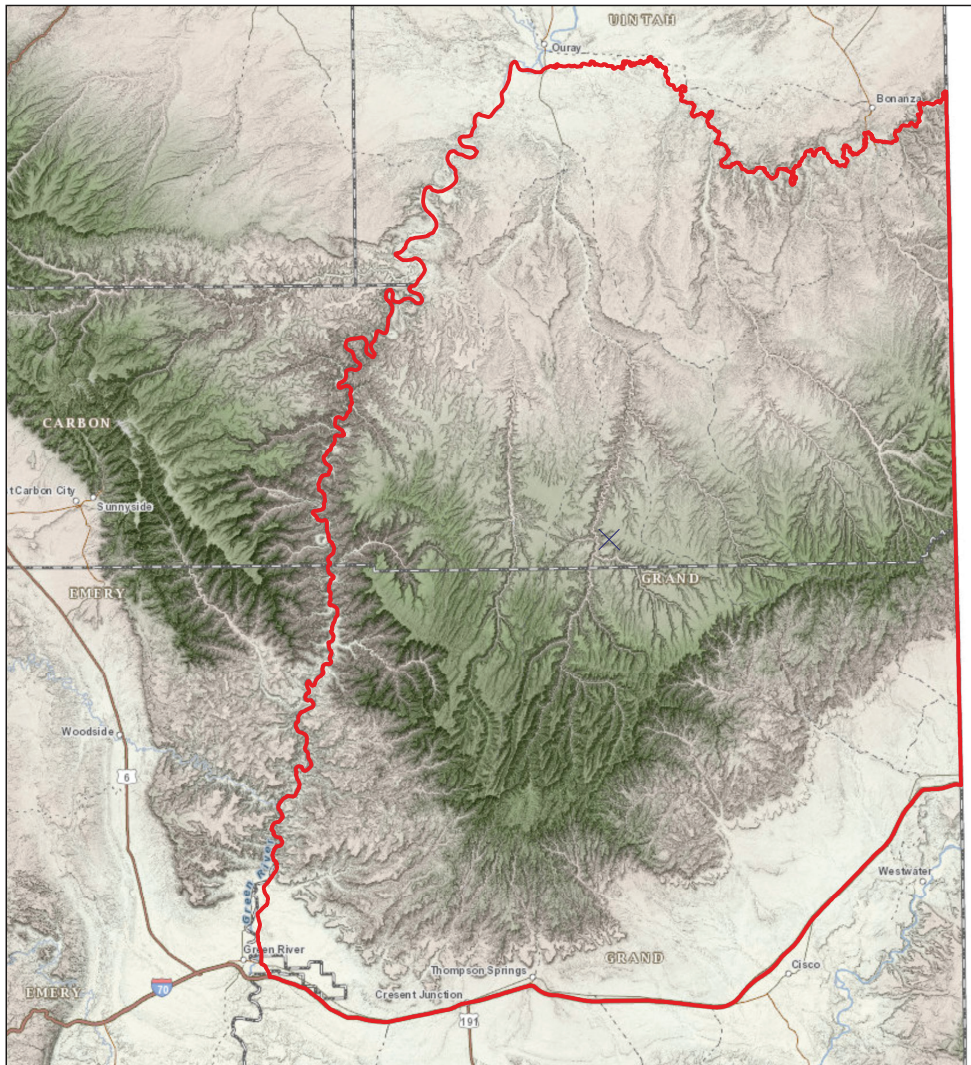
(n) No nonresident permit in 2014

**NOTE: Permit Numbers will be determined in May 2014**

# NEW HUNT RECOMMENDATION

**UNIT** Book Cliffs

**SPECIES** Bison



**Rational:** The UDWR transplanted 14 bison to the Book Cliffs in 2008, 30 bison in 2009, and 40 in 2010. We transplanted a total of 15 bulls. The Ute Tribe also has a substantial bison herd that supplements the Book Cliffs. The transplanted bulls have all reached maturity. The 2013 preseason classification data shows 35 bulls/100 cows. The herd has grown to a point to allow hunter harvest.

**New season dates:** Nov. 1–28, 2014

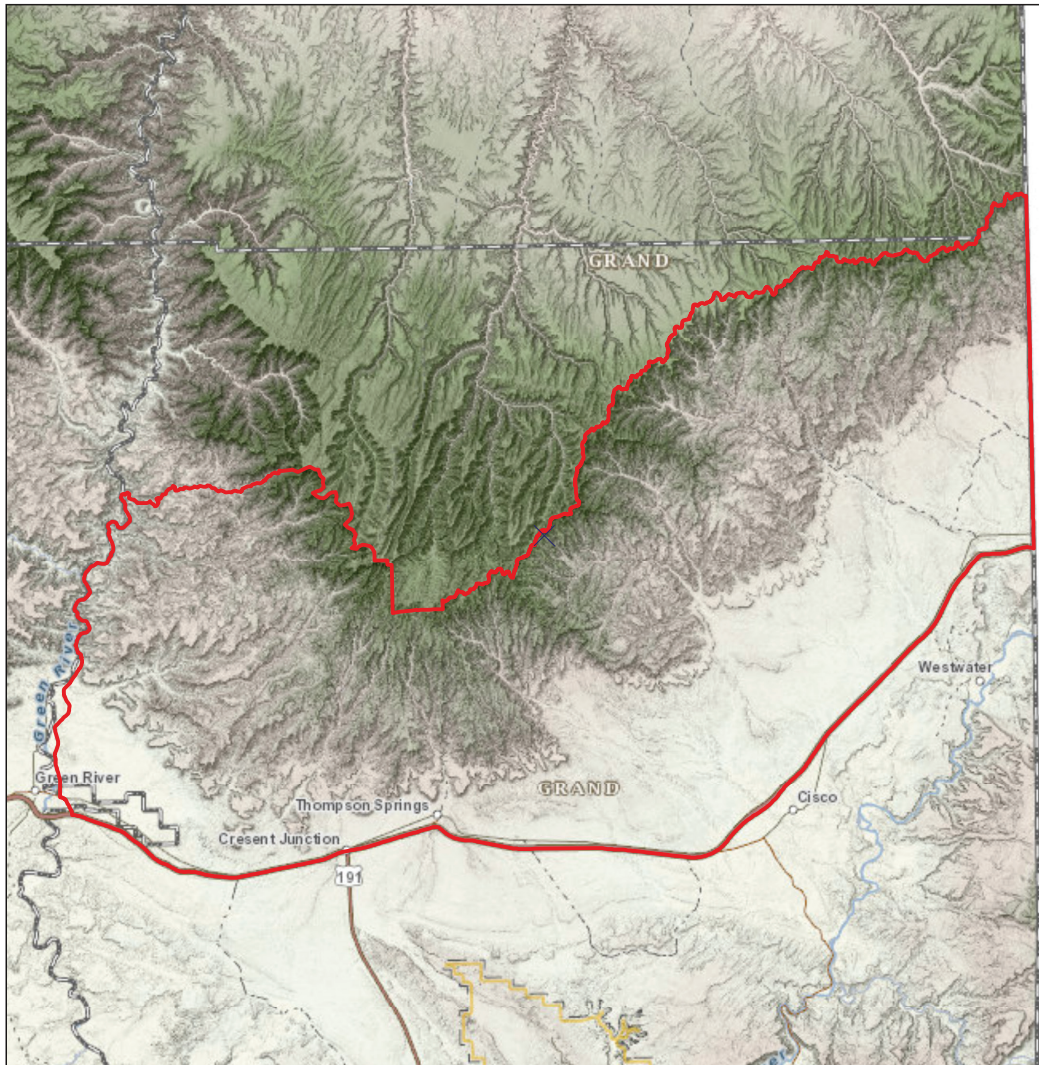
**New hunt boundary description:** Grand and Uintah counties--Boundary begins at Exit 164 on I-70 near the town of Green River; east on I-70 to the Utah-Colorado state line; north on this state line to the White River; west along this river to the Green River; south along this river to Swasey's Boat Ramp and the Hastings Road; south on this road to SR-19; south and east on SR-19 to Exit 164 on I-70 near the town of Green River. EXCLUDES ALL NATIVE AMERICAN TRUST LAND WITHIN THE BOUNDARY. USGS 1:100,000 Maps: Huntington, Seep Ridge, Westwater. Boundary questions? Call the Price office, 435-613-3700 or the Vernal office, 435-781-9453.



# NEW HUNT RECOMMENDATION

**UNIT** Book Cliffs, South

**SPECIES** Mule deer



**Rational:** This recommendation will split the North and South portions of the Book Cliffs during the Any Weapon Season only. This change is meant to address discrepancies in buck-doe ratios between the North and South portions of the unit.

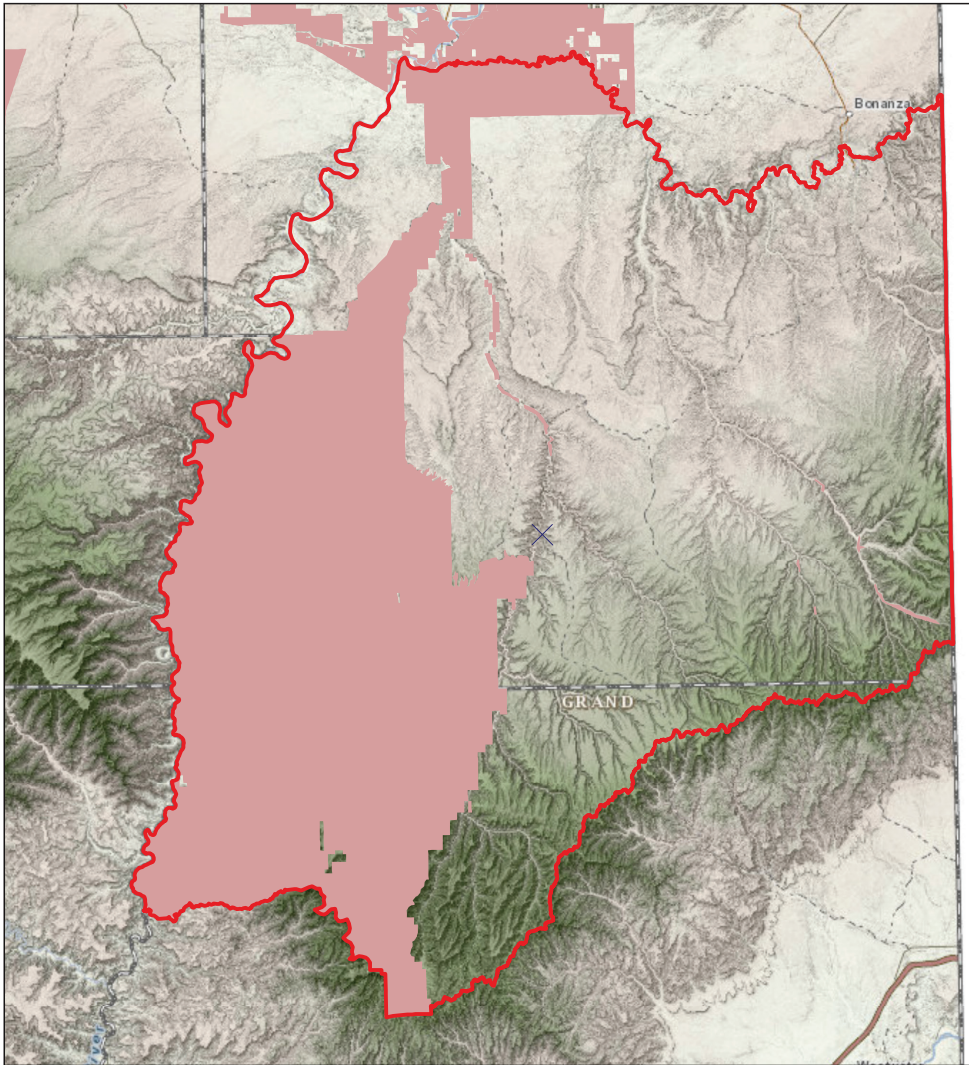
**Season dates:** Oct. 18–26, 2014

**New boundary:** Grand County--Boundary begins at the Utah-Colorado state line and the summit and drainage divide of the Book Cliffs; west along this summit and drainage divide to Diamond Ridge; southwest along Diamond Ridge and the Book Cliffs summit (north-south drainage divide) to the Uintah and Ouray Indian Reservation boundary (Hells Hole/head of Sege Canyon); west along this boundary to the Green River; south along this river to Swasey's Boat Ramp and the Hastings Road; south on this road to SR-19; south and east on SR-19 to Exit 164 on I-70 near the town of Green River; east along I-70 to the Utah-Colorado state line; north along this state line to the summit and drainage divide of the Book Cliffs. USGS 1:100,000 Maps: Huntington, Moab, Westwater. Boundary questions? Call the Price office, 435-613-3700.

# NEW HUNT RECOMMENDATION

**UNIT** Book Cliffs, North

**SPECIES** Mule deer



**Rational:** This recommendation will split the North and South portions of the Book Cliffs during the Any Weapon Season only. This change is meant to address discrepancies in buck-doe ratios between the North and South portions of the unit.

**Season dates:** Oct. 18–26, 2014

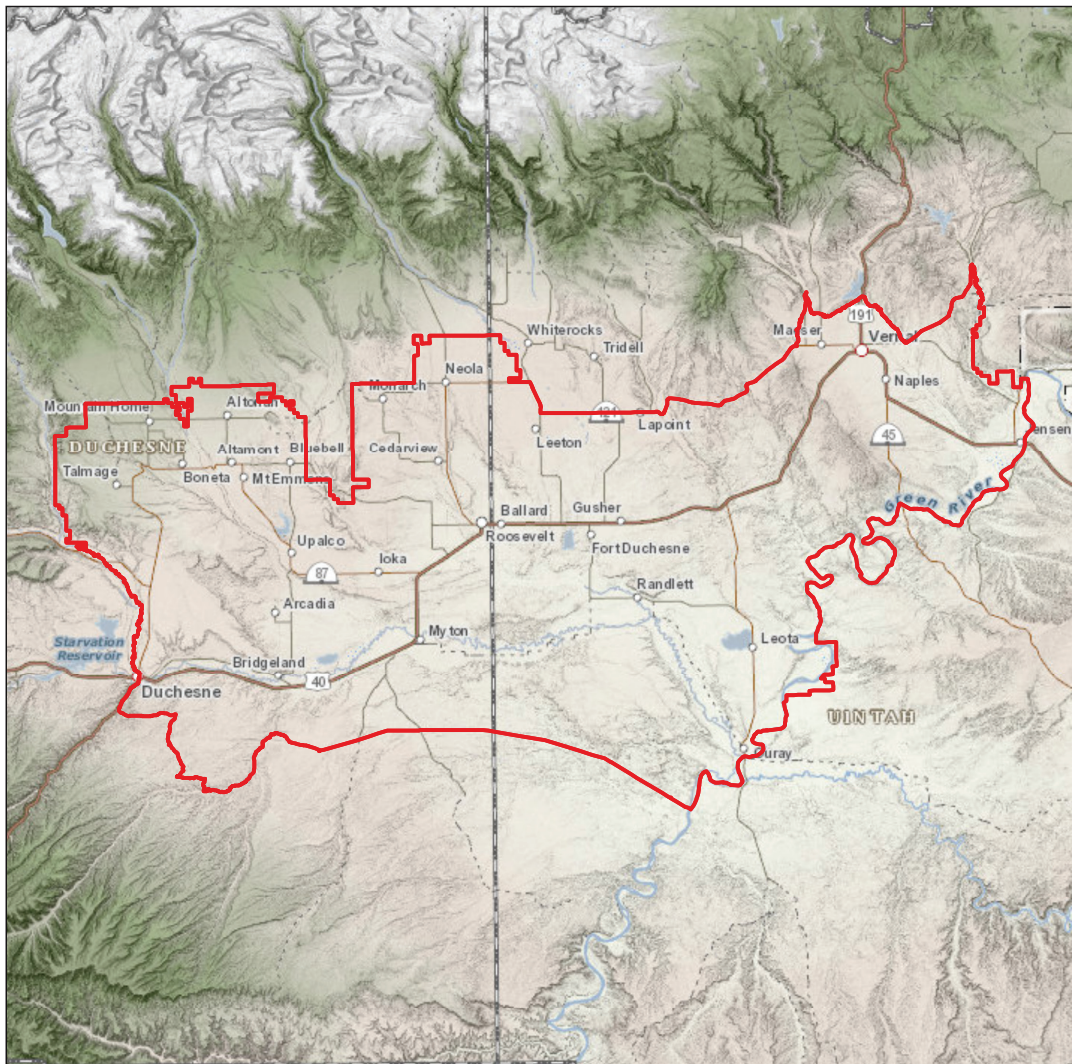
**New boundary:** Grand and Uintah counties--Boundary begins at the Utah-Colorado state line and the White River; south along this state line to the Book Cliffs summit (north-south drainage divide); west along this summit and drainage divide to Diamond Ridge; southwest along Diamond Ridge and the Book Cliffs summit (north-south drainage divide) to the Uintah and Ouray Indian Reservation boundary (Hells Hole/head of Sego Canyon); west along this boundary to the Green River; north along the Green River to the White River; east along this river to the Utah-Colorado state line. EXCLUDING ALL NATIVE AMERICAN TRUST LAND WITHIN THIS BOUNDARY. USGS 1:100,000 Maps: Huntington, Vernal, Price, Westwater, Seep Ridge. Boundary questions? Call the Vernal Office, 435-781-9453.



# BOUNDARY CHANGE RECOMMENDATION

**UNIT** Uintah Basin Extended Archery

**SPECIES** Mule deer and elk



**Rational:** The new boundary will include additional areas where low elevation agricultural areas are impacted by resident deer and elk and would have no impact on migratory animals.

**Season dates:** No change

**New boundary:** Duchesne and Uintah counties--Boundary begins at SR-87 and the Duchesne River in Duchesne; north along this river to the Ute Tribal boundary near the mouth of Rock Creek west of Utah; north then east on this boundary to SR-121 (1 mile east of Hayden); east on SR-121 to the Highline Canal in Maeser; north along this canal to Ashley Creek; south along this creek to the Rockpoint Canal; southeast along this canal to the Diamond Mountain Road; northeast on this road to Brush Creek; south along this creek to the Island Park road; east along this road to the BLM boundary; south and east along the BLM boundary to the Dinosaur National Monument boundary; east along this boundary to the Green River; southwest along this river to the Ouray National Wildlife Refuge boundary; south along this boundary to the Green River; west along this river to the BLM boundary near Pariette Draw west along the BLM boundary to the Pleasant Valley/Antelope Canyon road (CR-31) west along this road to the Antelope Canyon road (CR-27) south along this road to the Antelope Canyon/Sowers Canyon road junction west along the Sowers Canyon road (CR-24) to the Indian Canyon/Sowers Canyon cutoff road (CR-25) west along this road to US-191 north along US-191 to US-40 east on US-40 to SR-87 in Duchesne. EXCLUDES ALL NATIVE AMERICAN TRUST LAND. Contact Ouray National Wildlife Refuge for special hunting regulations on the refuge. USGS 1:100,000 Maps: Duchesne, Dutch John, Vernal. Boundary Questions? Call the Vernal office, 435-781-9453.



# NEW HUNT RECOMMENDATION

**UNIT** Central Mtns, Nebo/Wasatch Mtns, West

**SPECIES** Rocky Mountain bighorn sheep



**Rational:** To increase hunter opportunity. There are older rams available on these units that could provide a sport harvest, rather than die of natural causes.

**Season dates:** Standard season

**New boundary:** Juab, Salt Lake, Sanpete, Summit, Utah and Wasatch counties--Boundary begins at I-80 and I-15 in Salt Lake City; east on I-80 to US-40; south on US-40 to the Strawberry Bay Marina road; south on this road to USFS Road 042 (Indian Creek road); south and west on this road to USFS Road 051; south on this road to US-6; west on US-6 to US-89 near Thistle; south on US-89 to Mount Pleasant and SR-116; west on SR-116 to Moroni and SR-132; northwest on SR-132 to I-15 at Nephi; north on I-15 to I-80 in Salt Lake City. Excludes all CWMUs. USGS 1:100,000 Maps: Manti, Nephi, Provo, Salt Lake. Boundary questions? Call the Springville office, 801-491-5678.



# BOUNDARY CHANGE RECOMMENDATION

**UNIT** Cache/Morgan-South Rich/Ogden

**SPECIES** Pronghorn



**Rational:** By combining two units, hunters can find animals more easily and illegal trespass becomes less likely. Over the last four years pronghorn have occasionally been sighted in the Cache Valley and in Ogden Valley. Combining the hunt with the Cache unit and adding Ogden, will allow hunters to harvest these wayward animals if they happen upon them.

**New boundary:** Box Elder, Cache, Morgan, Rich, Summit, and Weber counties--Boundary begins at I-15 and the Utah-Idaho state line; south on I-15 to I-84 at exit 340; east on I-84 to I-80; east on I-80 to the Utah-Wyoming state line; north on this state line to the Utah-Idaho state line; west on this state line to I-15. Excludes all CWMUs. USGS 1:100,000 Maps: Logan, Ogden, Promontory Point, Tremonton. Boundary questions? Call the Ogden office, 801-476-2740.

# BOUNDARY CHANGE RECOMMENDATION

**UNIT** Panguitch Lake

**SPECIES** Pronghorn



**Rational:** Pronghorn have expanded their summer range to include lands administered by USFS on the northern portion of the Zion unit. This species expansion has been documented for at least the past 3 years. In an effort to increase opportunity, the recommendation is to include these additional public lands.

**New boundary:** Garfield, Iron and Kane counties--Boundary begins at US-89 and SR-14; north on US-89 to SR-20; west on SR-20 to I-15; south on I-15 to SR-14; east on SR-14 to the USFS boundary; south and east on this boundary to US-89; north on US-89 to SR-14. USGS 1:100,000 Maps: Beaver, Cedar City, Panguitch. Boundary questions? Call the Cedar City office, 435-865-6100.



# BOUNDARY CHANGE RECOMMENDATION

**UNIT** Plateau

**SPECIES** Pronghorn



**Rational:** In an effort to control harvest of pronghorn, it is recommended to reduce the Parker pronghorn boundary to restrict hunters to the Parker pronghorn herd instead of the entire Boulder WMU boundary. Additionally, it is recommended to expand the Mt Dutton/Paunsaugunt boundary to include the portion of Johns Valley found within the Boulder WMU boundary. These new boundaries will prevent Parker pronghorn hunters from harvesting Mt Dutton/Paunsaugunt pronghorn and allow Mt Dutton/Paunsaugunt pronghorn hunters access to the entire Johns Valley herd. To clarify the need, the Parker pronghorn herd and Johns Valley pronghorn herd are two separate disjunct herds where the current hunt boundaries provide opportunity of over harvest on the Johns Valley herd by Parker hunters.

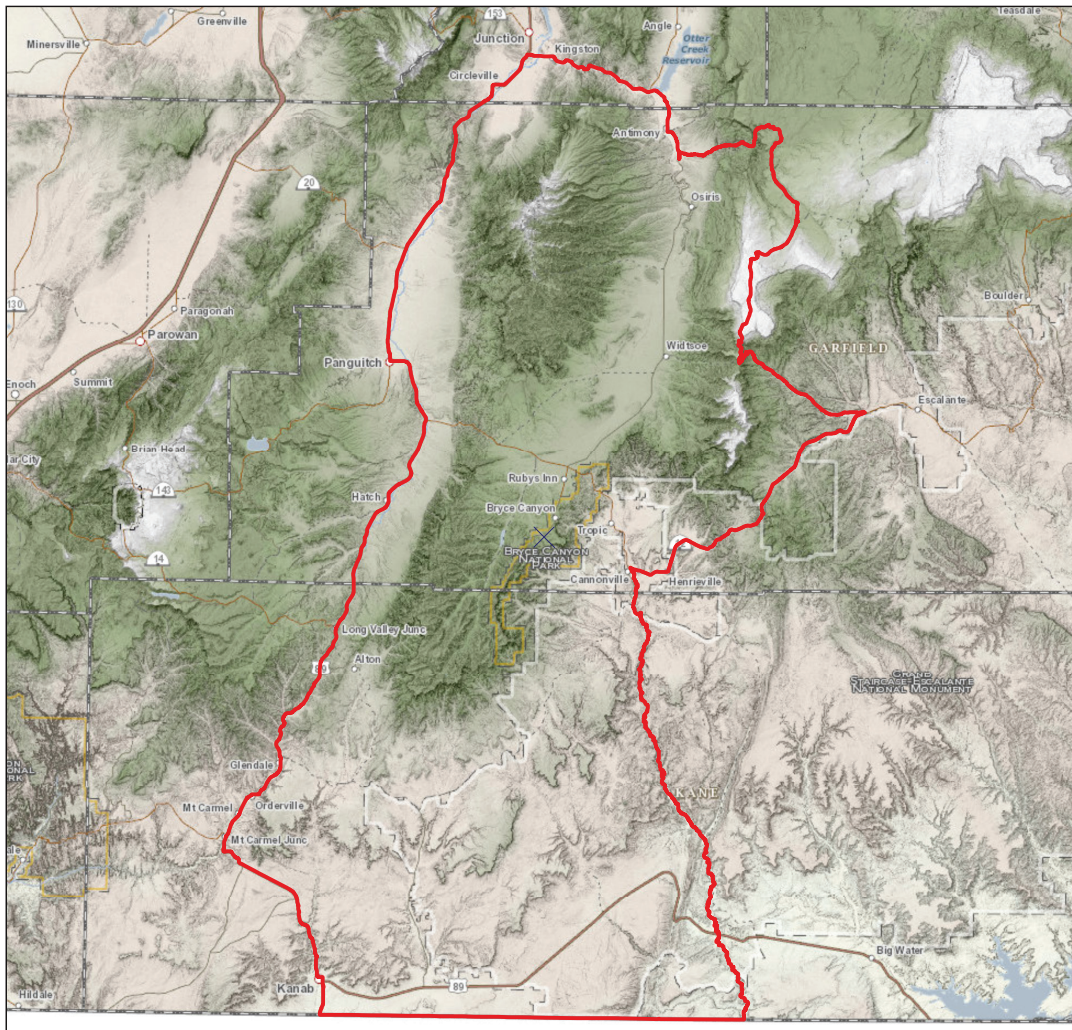
**New boundary:** Garfield, Piute, Sevier and Wayne counties--Boundary begins at I-70 and US-89 north of Sigurd; south on US-89 to SR-24; south on SR-24 to SR-62; south on SR-62 to SR-22; south on SR-22 to Antimony Creek; east along this creek to the Griffin Top Road (140); south on this road to the Widstoe Road (FH-17); southeast on this road (Main Canyon) to SR-12; east on SR-12 to the Burr Trail at Boulder east on the Burr Trail to the Notom road north on the Notom road to SR-24 east on SR-24 to the Caineville Wash road north along the Caineville Wash road to the Cathedral Valley road west on the Cathedral Valley road to Rock Springs Bench and the Last Chance Desert road north on the Last Chance Desert road to the Blue Flats road north and east on the Blue Flats road to the Willow Springs road north on the Willow Springs road towards Windy Peak and the Windy Peak road west on the Windy Peak road to SR-72 north on SR-72 to I-70 west on I-70 to US-89 north of Sigurd. EXCLUDES ALL NATIONAL PARKS. USGS 1:100,000 Maps: Loa, Salina, Escalante. Boundary questions? Call the Cedar City office, 435-865-6100.



# BOUNDARY CHANGE RECOMMENDATION

**UNIT** Mt Dutton/Paunsaugunt, Johns Valley (buck pronghorn)

**SPECIES** Buck pronghorn



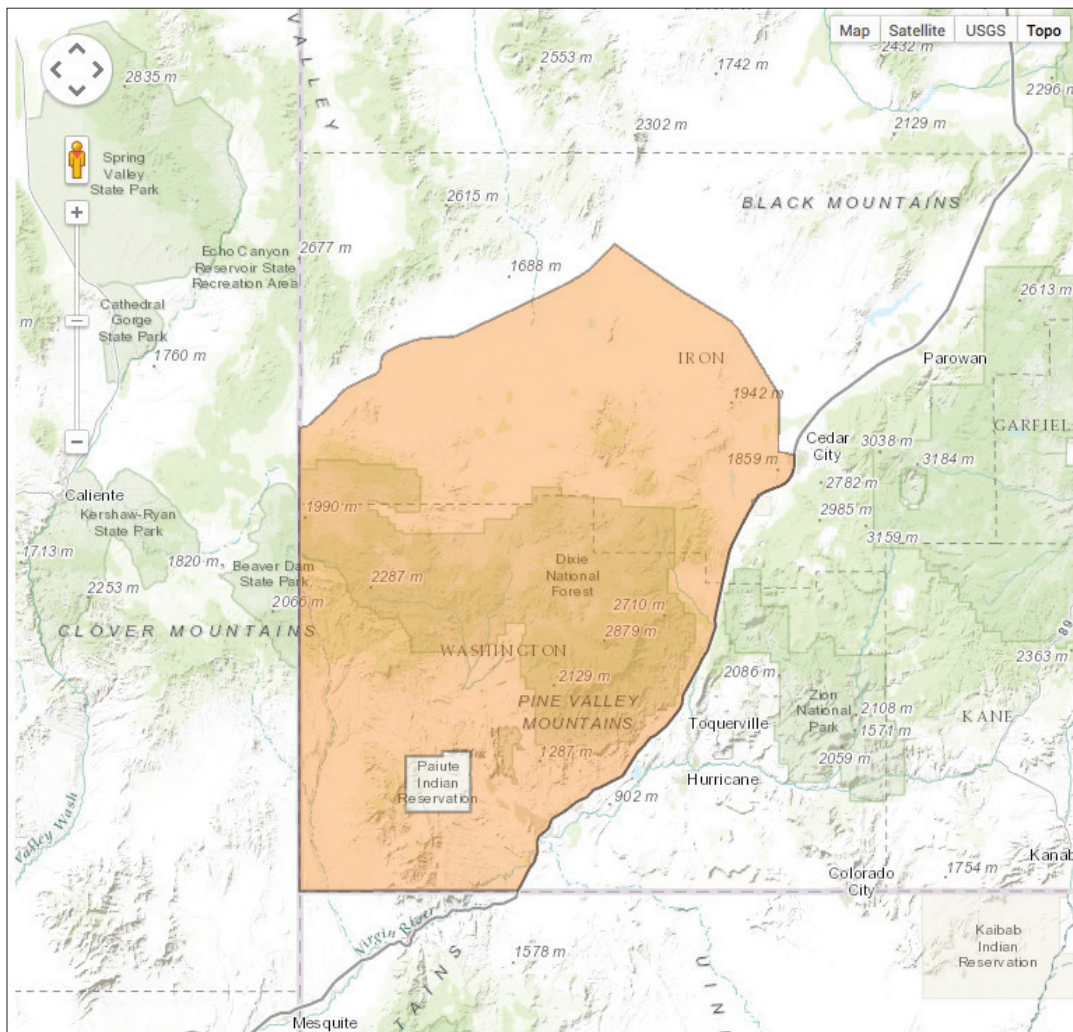
**Rational:** In an effort to control harvest of pronghorn, it is recommended to reduce the Parker pronghorn boundary to restrict hunters to the Parker pronghorn herd instead of the entire Boulder WMU boundary. Additionally, it is recommended to expand the Mt Dutton/Paunsaugunt boundary to include the portion of Johns Valley found within the Boulder WMU boundary. These new boundaries will prevent Parker pronghorn hunters from harvesting Mt Dutton/Paunsaugunt pronghorn and allow Mt Dutton/Paunsaugunt pronghorn hunters access to the entire Johns Valley herd. To clarify the need, the Parker pronghorn herd and Johns Valley pronghorn herd are two separate disjunct herds where the current hunt boundaries provide opportunity of over harvest on the Johns Valley herd by Parker hunters.

**New boundary:** Garfield, Kane and Piute counties--Boundary begins at US-89 and SR-62; south on US-89 to US-89A in Kanab; south on US-89A to the Utah-Arizona state line; east on this state line to the Paria River; north along this river to SR-12; east on SR-12 to the Widstoe Road (FH-17); northwest on this road (Main Canyon) to the Griffin Top Road (140); north on this road to Antimony Creek; west along this creek to SR-22; north on SR-22 to SR-62; west on SR-62 to US-89. USGS 1:100,000 Maps: Beaver, Escalante, Kanab, Loa, Panguitch. Boundary questions? Call the Cedar City office, 435-865-6100.

# BOUNDARY CHANGE RECOMMENDATION

**UNIT** Pine Valley

**SPECIES** Desert bighorn sheep



**Rational:** This change is to make the boundary and the name the Pine Valley, Virgin River Bighorn Sheep Unit consistent with the deer, elk and pronghorn. The unit will no longer be the Virgin River subunit.

**Season dates:** Aug. 1–15

**New boundary:** Iron and Washington counties--Boundary begins at the Utah-Arizona state line and I-15; north on I-15 to SR-56; west on SR-56 to the Lund highway; northwest on this highway to Lund and the Union Pacific railroad tracks; southwest along these tracks to the Utah-Nevada state line; south on this state line to the Utah-Arizona state line; east on this state line to I-15. EXCLUDES ALL NATIVE AMERICAN TRUST LANDS WITHIN THIS BOUNDARY. Excludes all CWMUs. USGS 1:100,000 Maps: Cedar City, St. George. Boundary questions? Call Cedar City office, 435-865-6100.



# BOUNDARY CHANGE RECOMMENDATION

**UNIT** Wasatch Mtns, Box Elder Peak/Lone Peak/Timpanogos

**SPECIES** Mountain goat



**Rational:** Flight data shows a decreased number of goats on the Box Elder Peak and Lone Peak units while Timpanogos unit is stable to increasing.

**Season dates:** Standard season

**New boundary:** Salt Lake, Summit, Utah, Wasatch, counties--Boundary begins at I-80 and I-15 in Salt Lake City; east on I-80 to US-40; south on US-40 to US-189; west on US-189 to 800 North in Orem; west on 800 North to I-15, north on I-15 to I-80 in Salt Lake City. Excludes all CWMUs. USGS 1:100,000 Maps: Provo, Salt Lake City. Boundary questions? Call the Springville office, 801-491-5678.

## **R657. Natural Resources, Wildlife Resources.**

### **R657-5. Taking Big Game.**

#### **R657-5-1. Purpose and Authority.**

(1) Under authority of Sections 23-14-18 and 23-14-19, the Wildlife Board has established this rule for taking deer, elk, pronghorn, moose, bison, bighorn sheep, and Rocky Mountain goat.

(2) Specific dates, areas, methods of take, requirements, and other administrative details which may change annually are published in the guidebook of the Wildlife Board for taking big game.

#### **R657-5-2. Definitions.**

(1) Terms used in this rule are defined in Section 23-13-2.

(2) In addition:

(a) "Antlerless deer" means a deer without antlers or with antlers five inches or shorter.

(b) "Antlerless elk" means an elk without antlers or with antlers five inches or shorter.

(c) "Antlerless moose" means a moose with antlers shorter than its ears.

(d) "Arrow quiver" means a portable arrow case that completely encases all edges of the broadheads.

(e) "Buck deer" means a deer with antlers longer than five inches.

(f) "Buck pronghorn" means a pronghorn with horns longer than five inches.

(g) "Bull elk" means an elk with antlers longer than five inches.

(h) "Bull moose" means a moose with antlers longer than its ears.

(i) "Cow bison" means a female bison.

(j) "Doe pronghorn" means a pronghorn without horns or with horns five inches or shorter.

(k) [~~"Highway" means the entire width between property lines of every way or place of any nature when any part of it is open to the use of the public as a matter of right for vehicular travel.~~]"Draw-lock" means a mechanical device used to hold and support the draw weight of a conventional or compound bow at any increment of draw until released by the archer using a trigger mechanism and safety attached to the device.

(l) "Hunter's choice" means either sex may be taken.

(m) "Limited entry hunt" means any hunt published in the hunt tables of the guidebook of the Wildlife Board for taking big game, which is identified as limited entry and does not include general or once-in-a-lifetime hunts.

(n) "Limited entry permit" means any permit obtained for a limited entry hunt by any means, including conservation permits, [wildlife convention permits](#), sportsman permits, cooperative wildlife management unit permits and limited entry landowner permits.

(o) "Once-in-a-lifetime hunt" means any hunt published in the hunt tables of the guidebook of the Wildlife Board for taking big game, which is identified as once-in-a-lifetime, and does not include general or limited entry hunts.

(p) "Once-in-a-lifetime permit" means any permit obtained for a once-in-a-lifetime hunt by any means, including conservation permits, [wildlife conventions permits](#), sportsman permits, cooperative wildlife management unit permits and limited entry landowner permits.

(q) "Ram" means a male desert bighorn sheep or Rocky Mountain bighorn sheep.

~~(r)(i) "Resident" for purposes of this rule means a person who:]~~

~~[(A) has been domiciled in the state of Utah for six consecutive months immediately preceding the purchase of a license or permit; and]~~

~~[(B) does not claim residency for hunting, fishing, or trapping in any other state or country.]~~

~~[(ii) A Utah resident retains Utah residency if that person leaves this state:]~~

~~[(A) to serve in the armed forces of the United States or for religious or educational purposes; and]~~

~~[(B) complies with Subsection (m)(i)(B).]~~

~~[(iii)(A) A member of the armed forces of the United States and dependents are residents for the purposes of this chapter as of the date the member reports for duty under assigned orders in the state if the member:]~~

~~[(I) is not on temporary duty in this state; and]~~

~~[(II) complies with Subsection (m)(i)(B).]~~

~~[(iv) A copy of the assignment orders must be presented to a division office to verify the member's qualification as a resident.]~~

~~[(v) A nonresident attending an institution of higher learning in this state as a full-time student may qualify as a resident for purposes of this chapter if the student:]~~

~~[(A) has been present in this state for 60 consecutive days immediately preceding the purchase of the license or permit; and]~~

~~[(B) complies with Subsection (m)(i)(B).]~~

~~[(vi) A Utah resident license or permit is invalid if a resident license for hunting, fishing, or trapping is purchased in any other state or country.]~~

~~[(vii) An absentee landowner paying property tax on land in Utah does not qualify as a resident.]]~~~~(s) "Spike bull" means a bull elk which has at least one antler having no branching above the ears. Branched means a projection on an antler longer than one inch, measured from its base to its tip.])~~ ["Spike bull" means a bull elk which has at least one antler beam with no branching above the ears. Branched means a projection on an antler longer than one inch, measured from its base to its tip.](#)

~~[(t)(i) "Valid application" means:]~~

~~[(A) it is for a species that the applicant is eligible to possess a permit;]~~

~~[(B) there is a hunt for that species regardless of estimated permit numbers; and]~~

~~[(C) there is sufficient information on the application to process the application, including personal information, hunt information, and sufficient payment.]~~

~~[(ii) Applications missing any of the items in Subsection (a) may still be considered valid if the application is timely corrected through the application correction process.]~~



### **R657-5-3. License, Permit, and Tag Requirements.**

(1) A person may engage in hunting protected wildlife or in the sale, trade, or barter of protected wildlife or ~~their~~its parts in accordance with Section 23-19-1 and the rules or guidebooks of the Wildlife Board.

(2) Any license, permit, or tag that is mutilated or otherwise made illegible is invalid and may not be used for taking or possessing big game.

(3) A person must possess or obtain a Utah hunting or combination license to apply for or obtain any big game hunting permit.

### **R657-5-4. Age Requirements and Restrictions.**

(1)(a) Subject to the exceptions in subsection (c), a person 12 years of age or older may apply for or obtain a permit to hunt big game. A person 11 years of age may apply for a permit to hunt big game if that person's 12th birthday falls within the calendar year for which the permit is issued.

(b) A person may not use a permit to hunt big game before their 12th birthday.

(c) A person who is younger than 14 years of age may not apply for or obtain the following types of big game permits issued by the division through a public drawing:

- (i) premium limited entry;
- (ii) limited entry;
- (iii) once-in-a-lifetime; and
- (iv) cooperative wildlife management unit.

(d) A person who is 13 years of age may apply for or obtain a type of permit listed in Subsection(1)(c) if that person's 14th birthday falls within the calendar year for which the permit is issued.

(e) antlerless deer, antlerless elk, and doe pronghorn permits are not limited entry, premium limited entry or cooperative wildlife management unit permits for purposes of determining a 12 or 13 year olds eligibility to apply for or obtain through a public drawing administered by the division.

(2)(a) A person at least 12 years of age and under 16 years of age must be accompanied by his parent or legal guardian, or other responsible person 21 years of age or older and approved by his parent or guardian, while hunting big game with any weapon.

(b) As used in this section, "accompanied" means at a distance within which visual and verbal communication are maintained for the purposes of advising and assisting.

### **R657-5-5. Duplicate License and Permit.**

(1) Whenever any unexpired license, permit, tag or certificate of registration is destroyed, lost or stolen, a person may obtain a duplicate from a division office or online license agent, for ten dollars or half of the price of the original license, permit, or certificate of registration, whichever is less.

(2) The division may waive the fee for a duplicate unexpired license, permit, tag or certificate of registration provided the person did not receive the original license, permit, tag or certificate of registration.

**R657-5-6. Hunting Hours.**

Big game may be taken only between one-half hour before official sunrise through one-half hour after official sunset.

**R657-5-7. Prohibited Weapons.**

(1) A person may not use any weapon or device to take big game other than those expressly permitted in this rule.

(2) A person may not use:

(a) a firearm capable of being fired fully automatic; or

(b) any light enhancement device or aiming device that casts a visible beam of light. Laser range finding devices are exempt from this restriction.

**R657-5-8. Rifles and Shotguns.**

(1) The following rifles and shotguns may be used to take big game:

(a) any rifle firing centerfire cartridges and expanding bullets; and

(b) a shotgun, 20 gauge or larger, firing only 00 or larger buckshot or slug ammunition.

**R657-5-9. Handguns.**

(1) A handgun may be used to take deer and pronghorn, provided the handgun is a minimum of .24 caliber, fires a centerfire cartridge with an expanding bullet and develops 500 foot-pounds of energy at the muzzle.

(2) A handgun may be used to take elk, moose, bison, bighorn sheep, and Rocky Mountain goat provided the handgun is a minimum of .24 caliber, fires a centerfire cartridge with an expanding bullet and develops 500 foot-pounds of energy at 100 yards.

**R657-5-10. Muzzleloaders.**

(1) A muzzleloader may be used during any big game hunt, except an archery hunt, provided the muzzleloader:

(a) can be loaded only from the muzzle;

(b) has open sights, peep sights, or a fixed non-magnifying 1x scope, [except as provided in Subsection \(4\) and R657-12](#);

(c) has a single barrel;

(d) has a minimum barrel length of 18 inches;

(e) is capable of being fired only once without reloading;

(f) powder and bullet, or powder, sabot and bullet are not bonded together as one unit for loading;

(g) is loaded with black powder or black powder substitute, which must not contain smokeless powder.

(2)(a) A lead or expanding bullet or projectile of at least 40 caliber must be used to hunt big game.

(b) A bullet 130 grains or heavier, or a sabot 170 grains or heavier must be used for taking deer and pronghorn.

(c) A 210 grain or heavier bullet must be used for taking elk, moose, bison, bighorn sheep, and Rocky Mountain goat, except sabot bullets used for taking these species must be a minimum of 240 grains.

(3)(a) A person who has obtained a muzzleloader permit [for a big game hunt](#) may:

(i) use only muzzleloader equipment authorized in this ~~[Section]~~[Subsections \(1\) and \(2\)](#) to take the species authorized in the permit; and

(ii) not possess or be in control of a rifle or shotgun while in the field during the muzzleloader hunt.

(A) "Field" for purposes of this section, means a location where the permitted species of wildlife is likely to be found. "Field" does not include a hunter's established campsite or the interior of a fully enclosed automobile or truck.

(b) The provisions of Subsection (a) do not apply to:

(i) a person licensed to hunt upland game or waterfowl provided the person complies with Rules R657-6 and R657-9 and the Upland Game Guidebook and Waterfowl Guidebook, respectively, and possessing only legal weapons to take upland game or waterfowl;

(ii) a person licensed to hunt big game species during hunts that coincide with the muzzleloader hunt;

(iii) livestock owners protecting their livestock; or

(iv) a person licensed to carry a concealed weapon in accordance with Title 53, Chapter 5, Part 7 of the Utah Code, provided the person is not utilizing the concealed firearm to hunt or take protected wildlife.

[\(4\) A person who has obtained an any weapon permit for a big game hunt may use muzzleloader equipment authorized in this Section to take the species authorized in the permit, including a fixed or variable magnifying scope.](#)

#### **R657-5-11. Archery Equipment.**

(1) Archery equipment may be used during any big game hunt, except a muzzleloader hunt, provided:

(a) the minimum bow pull is 40 pounds at the draw or the peak, whichever comes first; and

(b) arrowheads used have two or more sharp cutting edges that cannot pass through a 7/8 inch ring;

(c) expanding arrowheads cannot pass through a 7/8 inch ring when expanded, and

(d) arrows must be a minimum of 20 inches in length from the tip of the arrowhead to the tip of the nock, and must weigh at least 300 grains.

(2) The following equipment or devices may not be used to take big game:

(a) a crossbow, except as provided in [Subsection \(5\) and](#) Rule R657-12;

- (b) arrows with chemically treated or explosive arrowheads;
- (c) a mechanical device for holding the bow at any increment of draw, except as provided in [Subsection \(5\) and Rule R657-12](#);
- (d) a release aid that is not hand held or that supports the draw weight of the bow, [except as provided in Subsection \(5\) and Rule R657-12](#); or
- (e) a bow with an attached electronic range finding device or a magnifying aiming device.

(3) Arrows carried in or on a vehicle where a person is riding must be in an arrow quiver or a closed case.

(4)(a) A person who has obtained an archery permit [for a big game hunt](#) may :

- (i) use only archery equipment authorized in ~~[this section]~~ [Subsections \(1\) and \(2\)](#) to take the species authorized in the permit; and
- (ii) not possess or be in control of a [crossbow, draw-lock](#), rifle, shotgun or muzzleloader while in the field during an archery hunt.

(A) "Field" for purposes of this section, means a location where the permitted species of wildlife is likely to be found. "Field" does not include a hunter's established campsite or the interior of a fully enclosed automobile or truck.

(b) The provisions of Subsection (a) do not apply to:

- (i) a person licensed to hunt upland game or waterfowl provided the person complies with Rules R657-6 and R657-9 and the Upland Game Guidebook and Waterfowl Guidebook, respectively, and possessing only ~~[legal]~~ [the](#) weapons [authorized](#) to take upland game or waterfowl;
- (ii) a person licensed to hunt big game species during hunts that coincide with the archery hunt, [provided the person is in compliance with the regulations of that hunt and possesses only the weapons authorized for that hunt](#);
- (iii) livestock owners protecting their livestock; ~~[or]~~
- (iv) a person licensed to carry a concealed weapon in accordance with Title 53, Chapter 5, Part 7 of the Utah Code, provided the person is not utilizing the concealed firearm to hunt or take protected wildlife; [or](#)
- (v) [a person possessing a crossbow or draw-lock under a certificate of registration issued pursuant to R657-12.](#)

[\(5\) A person who has obtained an any weapon permit for a big game hunt may use arechery equipment authorized in this Section to take the species authorized in the permit, including a crossbow or draw-lock.](#)

[\(6\)\(a\) A crossbow used to hunt big game must have:](#)

- [\(i\) a minimum draw weight of 125 pounds;](#)
- [\(ii\) a minimum draw length of 14 inches, measured between the latch \(nocking point\) and where the bow limbs attach to the stock;](#)
- [\(iii\) an overall length of at least 24 inches; measured between the butt stock end and where the bow limbs attach to the stock; and](#)
- [\(iv\) a positive mechanical safety mechanism.](#)

[\(b\) A crossbow arrow or bolt used to hunt big game must be at least 16 inches long and have:](#)

- [\(i\) fixed broadheads that are at least 7/8 inch wide at the widest point; or](#)

(ii) expandable, mechanical broadheads that are at least 7/8 inch wide at the widest point when the broadhead is in the open position.

(c) It is unlawful for any person to:

(i) hunt big game with a crossbow during a big game archery hunt, except as provided in R657-12-8;

(ii) carry a cocked crossbow containing an arrow or a bolt while in or on any motorized vehicle on a public highway or other public right-of-way, except as provided in R657-12-4; or

(iii) hunt any protected wildlife with a crossbow:

(A) bolt that has any chemical, explosive or electronic device attached;

(B) that has an attached electronic range finding device; or

(C) that has an attached magnifying aiming device, except as provided in Subsection (7).

(7) A crossbow used to hunt big game during an any weapon hunt may have a fixed or variable magnifying scope.

#### **R657-5-12. Areas With Special Restrictions.**

(1)(a) Hunting of any wildlife is prohibited within the boundaries of all park areas, except those designated by the Division of Parks and Recreation in Rule R651-614-4.

(b) Hunting with rifles and handguns in park areas designated open is prohibited within one mile of all park area facilities, including buildings, camp or picnic sites, overlooks, golf courses, boat ramps, and developed beaches.

(c) Hunting with shotguns or archery equipment is prohibited within one-quarter mile of the areas provided in Subsection (b).

(2) Hunting is closed within the boundaries of all national parks [~~and monuments~~] unless otherwise provided by the governing agency.

(3) Hunters obtaining a Utah license, permit or tag to take big game are not authorized to hunt on tribal trust lands. Hunters must obtain tribal authorization to hunt on tribal trust lands.

(4) Military installations, including Camp Williams, are closed to hunting and trespassing unless otherwise authorized.

(5) In Salt Lake County, a person may not hunt big game within one-half mile of Silver Lake in Big Cottonwood Canyon.

(6) Hunting is closed within a designated portion of the town of Alta. Hunters may refer to the town of Alta for boundaries and other information.

(7) Domesticated Elk Facilities and Domesticated Elk Hunting Parks, as defined in Section 4-39-102(2) and Rules R58-18 and R58-20, are closed to big game hunting. This restriction does not apply to the lawful harvest of domesticated elk as defined and allowed pursuant to Rule R58-20.

(8) State waterfowl management areas are closed to taking big game, except as otherwise provided in the guidebook of the Wildlife Board for taking big game.

(9) Hunters are restricted to using archery equipment, muzzleloaders or shotguns on the Scott M. Matheson [~~Wetlands~~]Wetland Preserve.

(10) A person may not discharge a firearm, except a shotgun or muzzleloader, from, upon, or across the Green River located near Jensen, Utah from the Highway 40 bridge upstream to the Dinosaur National Monument boundary.

#### **R657-5-13. Spotighting.**

(1) Except as provided in Section 23-13-17:

(a) a person may not use or cast the rays of any spotlight, headlight, or other artificial light to:

(i) take protected wildlife; or

(ii) [~~located~~locate] protected wildlife while [~~having~~]in possession of a rifle, shotgun, archery equipment, crossbow, or muzzleloader.

(b) the use of a spotlight or other artificial light in a field, woodland, or forest where protected wildlife are generally found is prima facie evidence of attempting to locate protected wildlife.

(2) The provisions of this section do not apply to:

(a) the use of headlights or other artificial light in a usual manner where there is no attempt or intent to locate protected wildlife; or

(b) a person licensed to carry a concealed weapon in accordance with Title 53, Chapter 5, Part 7 of the Utah Code, provided the person is not utilizing the concealed firearm to hunt or take wildlife.

#### **R657-5-14. Use of Vehicle or Aircraft.**

(1)(a) A person may not use an airplane or any other airborne vehicle or device, or any motorized terrestrial or aquatic vehicle, including snowmobiles and other recreational vehicles, except a vessel as provided in Subsection (c), to take protected wildlife.

(b) A person may not take protected wildlife being chased, harmed, harassed, rallied, herded, flushed, pursued or moved by an aircraft or any other vehicle or conveyance listed in Subsection (a).

(c) Big game may be taken from a vessel provided:

(i) the motor of a motorboat has been completely shut off;

(ii) the sails of a sailboat have been furled; and

(iii) the vessel's progress caused by the motor or sail has ceased.

(2)(a) A person may not use any type of aircraft from 48 hours before any big game hunt begins through 48 hours after any big game hunting season ends to:

(i) transport a hunter or hunting equipment into a hunting area;

(ii) transport a big game carcass; or

(iii) locate, or attempt to observe or locate any protected wildlife.

(b) Flying slowly at low altitudes, hovering, circling or repeatedly flying over a forest, marsh, field, woodland or rangeland where protected wildlife is likely to be found may be used as evidence of violations of Subsections (1) and (2).

(3) The provisions of this section do not apply to the operation of an aircraft in a usual manner, or landings and departures from improved airstrips, where there is no attempt or intent to locate protected wildlife.



**R657-5-15. Party Hunting and Use of Dogs.**

(1) A person may not take big game for another person, except as provided in Section 23-19-1 and Rule R657-12.

(2) A person may not use the aid of a dog to take, chase, harm or harass big game. The use of one blood-trailing dog controlled by leash during lawful hunting hours within 72 hours of shooting a big game animal is allowed to track wounded animals and aid in recovery.

**R657-5-16. Big Game Contests.**

A person may not enter or hold a big game contest that:

- (1) is based on big game or [\[their\]its](#) parts; and
- (2) offers cash or prizes totaling more than \$500.

**R657-5-17. Tagging.**

(1) The carcass of any species of big game must be tagged in accordance with Section 23-20-30.

(2) A person may not hunt or pursue big game after any of the notches have been removed from the tag or the tag has been detached from the permit.

(3) The tag must remain with the largest portion of the meat until the animal is entirely consumed.

**R657-5-18. Transporting Big Game Within Utah.**

(1) A person may transport big game within Utah only as follows:

(a) the head or sex organs must remain attached to the largest portion of the carcass;

(b) the antlers attached to the skull plate must be transported with the carcass of an elk taken in a spike bull unit; and

(c) the person who harvested the big game animal must accompany the carcass and must possess a valid permit corresponding to the tag attached to the carcass, except as provided in Subsection (2).

(2) A person who did not take the big game animal may transport it only after obtaining a shipping permit or disposal receipt from the division or a donation slip as provided in Section 23-20-9.

**R657-5-19. Exporting Big Game From Utah.**

(1) A person may export big game or [\[their\]its](#) parts from Utah only if:

(a) the person who harvested the big game animal accompanies it and possesses a valid permit corresponding to the tag which must be attached to the largest portion of the carcass; or

(b) the person exporting the big game animal or its parts, if it is not the person who harvested the animal, has obtained a shipping permit from the division.

**R657-5-20. Purchasing or Selling Big Game or [\[Their\]its](#) Parts.**

(1) A person may only purchase, sell, offer or possess for sale, barter, exchange or trade any big game or ~~their~~its parts as follows:

(a) Antlers, heads and horns of legally taken big game may be purchased or sold only on the dates published in the guidebook of the Wildlife Board for taking big game;

(b) Untanned hides of legally taken big game may be purchased or sold only on the dates published in the guidebook of the Wildlife Board for taking big game;

(c) Inedible byproducts, excluding hides, antlers and horns~~, or~~of legally possessed big game as provided in Subsection 23-20-~~3(1)(d)~~,3, may be purchased or sold at any time;

(d) tanned hides of legally taken big game may be purchased or sold at any time; and

(e) shed antlers and horns may be purchased or sold at any time.

(2)(a) Protected wildlife that is obtained by the division by any means may be sold or donated at any time by the division or its agent.

(b) A person may purchase or receive protected wildlife from the division, which is sold or donated in accordance with Subsection (2)(a), at any time.

(3) A person selling or purchasing antlers, heads, horns or untanned hides shall keep transaction records stating:

(a) the name and address of the person who harvested the animal;

(b) the transaction date; and

(c) the permit number of the person who harvested the animal.

(4) Subsection (3) does not apply to scouting programs or other charitable organizations using untanned hides.

#### **R657-5-21. Possession of Antlers and Horns.**

(1) A person may possess antlers or horns or parts of antlers or horns only from:

(a) lawfully harvested big game;

(b) antlers or horns lawfully obtained as provided in Section R657-5-20; or

(c) shed antlers or shed horns.

(2)(a) A person may gather shed antlers or shed horns or parts of shed antlers or shed horns at any time. An authorization is required to gather shed antlers or shed horns or parts of shed antlers or shed horns during the shed antler and shed horn season published in the guidebook of the Wildlife Board for taking big game.

(b) A person must complete a wildlife harassment and habitat destruction prevention course annually to obtain the required authorization to gather shed antlers during the antler gathering season.

(3) "Shed antler" means an antler which:

(a) has been dropped naturally from a big game animal as part of its annual life cycle; and

(b) has a rounded base commonly known as the antler button or burr attached which signifies a natural life cycle process.



(4) "Shed horn" means the sheath from the horn of a pronghorn that has been dropped naturally as part of its annual life cycle. No other big game species shed their horns naturally.

#### **R657-5-22. Poaching-Reported Reward Permits.**

(1) For purposes of this section, "successful prosecution" means the screening, filing of charges and subsequent adjudication [of guilt](#) for the poaching incident.

(2) Any person who provides information leading to another person's successful prosecution [under Section 23-20-4](#) for wanton destruction of a bull moose, desert bighorn ram, rocky mountain bighorn ram, rocky mountain goat, bison, bull elk, buck deer or buck pronghorn [~~under Section 23-20-4 for~~ [within](#) any once-in-a-lifetime [~~species~~] or [~~within any~~] limited entry area may receive a permit from the division to hunt [~~for~~] the same species [~~and~~] on the same once-in-a-lifetime or limited entry area where the violation occurred, except as provided in Subsection (3).

(3)(a) In the event that issuance of a poaching-reported reward permit would exceed 5% of the total number of limited entry or once-in-a-lifetime permits issued in the following year for the respective area, a permit shall not be issued for that respective area. As an alternative, the division may issue a permit as outlined in Subsections (b) or (c).

(b) If the illegally taken animal is a bull moose, desert bighorn ram, rocky mountain bighorn ram, rocky mountain goat or bison, a permit for an alternative species and an alternative once-in-a-lifetime or limited entry area that has been allocated more than 20 permits may be issued.

(c) If the illegally taken animal is a bull elk, buck deer or buck pronghorn, a permit for the same species on an alternative limited entry area that has been allocated more than 20 permits may be issued.

(4)(a) The division may issue only one poaching-reported reward permit for any one animal illegally taken.

(b) No more than one poaching-reported reward permit shall be issued to any one person per successful prosecution.

(c) No more than one poaching-reported reward permit per species shall be issued to any one person in any one calendar year.

(5)(a) Poaching-reported reward permits may only be issued to the person who provides the most pertinent information leading to a successful prosecution. Permits are not transferrable.

(b) If information is received from more than one person, the director of the division shall make a determination based on the facts of the case, as to which person provided the most pertinent information leading to the successful prosecution in the case.

(c) The person providing the most pertinent information shall qualify for the poaching-reported reward permit.

(6) Any person who receives a poaching-reported reward permit must possess or obtain a Utah hunting or combination license and otherwise be eligible to hunt and

obtain big game permits as provided in all rules and regulations of the Wildlife Board and the Wildlife Resources Code.

### **R657-5-23. General Archery Buck Deer Hunt.**

(1) The dates of the general archery buck deer hunt are provided in the guidebook of the Wildlife Board for taking big game.

(2) A person who has obtained a general archery buck deer permit, or any other permit which allows that person to hunt general archery buck deer may use archery equipment [prescribed in R657-5-11](#) to take:

(a) one buck deer within the general hunt area specified on the permit for the time specified in the guidebook of the Wildlife Board for taking big game; or

(b) a deer of hunter's choice within the Wasatch Front or Uintah Basin extended archery area as provided in the guidebook of the Wildlife Board for taking big game.

(c) A person who has obtained a general archery buck deer permit, or any other permit which allows that person to hunt general archery buck deer, may not hunt within Cooperative Wildlife Management unit deer areas.

(d) A person who has obtained a general archery buck deer permit, or any other permit which allows that person to hunt general archery buck deer, may not hunt within premium limited entry deer and limited entry deer areas, except Crawford Mountain.

(3)(a) A person who obtains a general archery buck deer permit, or any other permit which allows that person to hunt general archery buck deer, may hunt within the Wasatch Front, Ogden or the Uintah Basin extended archery areas during the extended archery area seasons as provided in the guidebook of the Wildlife Board for taking big game and as provided in Subsection (b).

(b) A person must complete the Archery Ethics Course annually to hunt the Wasatch Front, Ogden or Uintah Basin extended archery areas during the extended archery season.

(c) A person must possess an Archery Ethics Course Certificate of Completion while hunting.

(4) A person who has obtained a general archery deer permit may not hunt during any other deer hunt or obtain any other deer permit, except antlerless deer.

(5)(a) Any person ~~[18]~~17 years of age or younger on ~~[the opening day]~~ [July 31](#) of the ~~[general archery buck deer season]~~ [current year](#), may hunt by ~~[region]~~ [unit](#) the general archery, the general any weapon and general muzzleloader deer seasons, using the appropriate equipment ~~[as provided]~~ [prescribed](#) in Sections R657-5-7 through R657-5-11, ~~[-respectively,]~~ for each respective season, provided that person obtains a general any weapon or general muzzleloader deer permit for a specified ~~[region]~~ [unit](#).

(b) If a person ~~[18]~~17 years of age or younger purchases a general archery buck deer permit, that person may only hunt during the general archery deer season and the extended archery season as provided Section R657-5-23(3).

(6) Hunter orange material must be worn if a centerfire rifle hunt is also in progress in the same area as provided in Section 23-20-31. Archers are cautioned to study rifle hunt tables and identify these areas described in the guidebook of the Wildlife Board for taking big game.

#### **R657-5-24. General Any Weapon Buck Deer Hunt.**

(1) The dates for the general any weapon buck deer hunt are provided in the guidebook of the Wildlife Board for taking big game.

(2) (a) A person who has obtained a general any weapon buck permit may use any legal weapon to take one buck deer within the hunt area specified on the permit as published in the guidebook of the Wildlife Board for taking big game.

(b) A person who has obtained a general any weapon buck deer permit, or any other permit which allows that person to hunt general any weapon buck deer, may not hunt within Cooperative Wildlife Management unit deer areas.

(c) A person who has obtained a general any weapon buck deer permit, or any other permit which allows that person to hunt general any weapon buck deer, may not hunt within premium limited entry deer and limited entry deer areas, except Crawford Mountain.

(3) A person who has obtained a general any weapon buck deer permit may not hunt during any other deer hunt or obtain any other deer permit, except:

(a) antlerless deer; and

(b) any person [~~18~~17] years of age or younger on [~~the opening day~~July 31] of the [~~general archery buck deer season~~current year], may hunt the general archery, general any weapon and general muzzleloader deer seasons, using the appropriate equipment as provided in Sections R657-5-7 through R657-5-11, respectively, for each respective season.

(i) If a person [~~18~~17] years of age or younger purchases a general archery buck deer permit, that person may only hunt during the general archery deer season and the extended archery season as provided Section R657-5-23(3).

#### **R657-5-25. General Muzzleloader Buck Deer Hunt.**

(1) The dates for the general muzzleloader buck deer hunt are provided in the guidebook of the Wildlife Board for taking big game.

(2) (a) A person who has obtained a general muzzleloader buck permit may use a muzzleloader, [as prescribed in R657-5-10](#), to take one buck deer within the general hunt area specified on the permit as published in the guidebook of the Wildlife Board for taking big game.

(b) A person who has obtained a general muzzleloader buck deer permit, or any other permit which allows that person to hunt general muzzleloader buck deer, may not hunt within Cooperative Wildlife Management unit deer areas.

(c) A person who has obtained a general muzzleloader buck deer permit, or any other permit which allows that person to hunt general muzzleloader buck deer, may not hunt within premium limited entry deer and limited entry deer areas, except Crawford Mountain.

(3) A person who has obtained a general muzzleloader deer permit may not hunt during any other deer hunt or obtain any other deer permit, except:

(a) antlerless deer; and

(b) any person [~~48~~17] years of age or younger on [~~the opening day~~July 31] of the [~~general archery buck deer season~~current year], may hunt the general archery, general any weapon and general muzzleloader deer seasons, using the appropriate equipment as provided in Sections R657-5-7 through R657-5-11, respectively, for each respective season.

(i) If a person [~~48~~17] years of age or younger purchases a general archery buck deer permit, that person may only hunt during the general archery deer season and the extended archery season as provided Section R657-5-23(3).

(4) Hunter orange material must be worn if a centerfire rifle hunt is also in progress in the same area as provided in Section 23-20-31. Muzzleloader hunters are cautioned to study the rifle hunt tables to identify these areas described in the guidebooks of the Wildlife Board for taking big game.

#### **R657-5-26. Limited Entry Buck Deer Hunts.**

(1) To hunt in a premium limited entry or limited entry area, hunters must obtain the respective limited entry buck permit. Limited entry areas are not open to general archery buck, general any weapon buck, or general muzzleloader buck hunting, except as specified in the guidebook of the Wildlife Board for taking big game.

(2) A limited entry buck deer permit allows a person using the prescribed legal weapon, to take one buck deer within the area and season specified on the permit, except deer cooperative wildlife management units located within the limited entry unit.

(3)(a) A person who has obtained a premium limited entry, limited entry, management buck deer, or cooperative wildlife management unit buck deer permit must report hunt information within 30 calendar days after the end of the hunting season, whether the permit holder was successful or unsuccessful in harvesting a buck deer.

(b) Limited entry and cooperative wildlife management unit buck deer permit holders must report hunt information by telephone, or through the division's Internet address.

(c) A person who fails to comply with the requirement in Subsection (a) shall be ineligible to apply for any once-in-a-lifetime, premium limited entry, limited entry, management, or cooperative wildlife management unit permit or bonus points in the following year.

(d) Late questionnaires may be accepted pursuant to Rule R657-42-9(3).

(4) A person who has obtained a limited entry buck permit may not hunt during any other deer hunt or obtain any other deer permit, except antlerless deer.

#### **R657-5-27. Antlerless Deer Hunts.**

(1) To hunt an antlerless deer, a hunter must obtain an antlerless deer permit.

(2)(a) An antlerless deer permit allows a person to take one antlerless deer, per antlerless deer tag, using any legal weapon within the area and season as specified on the permit and in the antlerless addendum.

(b) A person may not hunt on any cooperative wildlife management units unless that person obtains an antlerless deer permit for a cooperative wildlife management unit as specified on the permit.

(3) A person who has obtained an antlerless deer permit may not hunt during any other antlerless deer hunt or obtain any other antlerless deer permit.

(4)(a) A person who obtains an antlerless deer permit and any of the permits listed in Subsection (b) may use the antlerless deer permit during the established season for the antlerless deer permit and during the established season for the permits listed in Subsection (b) provided:

(i) the permits are both valid for the same area;

(ii) the appropriate archery equipment is used if hunting with an archery permit;

and

(iii) the appropriate muzzleloader hunt equipment is used if hunting with a muzzleloader permit.

(b)(i) General archery deer;

(ii) general muzzleloader deer;

(iii) limited entry archery deer; or

(iv) limited entry muzzleloader deer.

#### **R657-5-28. General Archery Elk Hunt.**

(1) The dates of the general archery elk hunt are provided in the guidebook of the Wildlife Board for taking big game.

(2)(a) A person who has obtained a general archery elk permit may use archery equipment to take:

(i) one elk of hunter's choice on a general any bull elk unit, except on elk cooperative wildlife management units;

(ii) an antlerless elk or spike bull elk on a general spike bull elk unit, except on elk cooperative wildlife management units;

(iii) one elk, any bull or antlerless on the Wasatch Front or Uintah Basin extended archery areas as provided in the guidebook of the Wildlife Board for taking big game.

(3)(a) A person who obtains a general archery elk permit may hunt within the Wasatch Front, Uintah Basin, and Sanpete Valley extended archery areas during the extended archery area seasons as provided in the guidebook of the Wildlife Board for taking big game and as provided in Subsection (b).

(b) A person must complete the Archery Ethics Course annually to hunt the extended archery areas during the extended archery season.

(c) A person must possess an Archery Ethics Course Certificate of Completion while hunting.

(4) A person who has obtained an archery elk permit may not hunt during any other elk hunt or obtain any other elk permit, except as provided in Subsection R657-5-33(3).

(5) Hunter orange material must be worn if a centerfire rifle hunt is also in progress in the same area as provided in Section 23-20-31. Archers are cautioned to

study the rifle hunt tables to identify these areas described in the guidebook of the Wildlife Board for taking big game.

#### **R657-5-29. General Season Bull Elk Hunt.**

(1) The dates for the general season bull elk hunt are provided in the guidebook of the Wildlife Board for taking big game within general season elk units, except in the following areas:

- (a) Salt Lake County south of I-80 and east of I-15; and
- (b) elk cooperative wildlife management units.

(2)(a) A person may purchase either a spike bull permit or an any bull permit.

(b) A person who has obtained a general season spike bull elk permit may take a spike bull elk on a general season spike bull elk unit. Any bull units are closed to spike bull permittees.

(c) A person who has obtained a general season any bull elk permit may take any bull elk, including a spike bull elk on a general season any bull elk unit. Spike bull units are closed to any bull permittees.

(3) A person who has obtained a general season bull elk permit may use any legal weapon to take a spike bull or any bull elk as specified on the permit.

(4) A person who has obtained a general season bull elk permit may not hunt during any other elk hunt or obtain any other elk permit, except as provided in Subsection R657-5-33(3).

#### **R657-5-30. General Muzzleloader Elk Hunt.**

(1) The dates of the general muzzleloader elk hunt are provided in the guidebook of the Wildlife Board for taking big game within the general season elk units, except in the following closed areas:

- (a) Salt Lake County south of I-80 and east of I-15; and
- (b) elk cooperative wildlife management units.

(2)(a) General muzzleloader elk hunters may purchase either a spike bull elk permit or an any bull elk permit.

(b) A person who has obtained a general muzzleloader spike bull elk permit may use a muzzleloader, [prescribed in R657-5-10, to](#) take a spike bull elk on an any general spike bull elk unit. Any bull units are closed to spike bull muzzleloader permittees.

(c) A person who has obtained a general muzzleloader any bull elk permit may use a muzzleloader, [as prescribed in R657-5-10, to](#) take any bull elk on an any bull elk unit. Spike bull units are closed to any bull muzzleloader permittees.

(3) A person who has obtained a general muzzleloader elk permit may not hunt during any other elk hunt or obtain any other elk permit, except as provided in Subsection R657-5-33(3).

#### **R657-5-31. Youth General Any Bull Elk Hunt.**

(1)(a) For purposes of this section "youth" means any person [~~18~~17 years of age or younger on [~~the opening day of the youth any bull elk season published in the guidebook of the Wildlife Board for taking big game~~July 31 of the current year].



- (b) A youth may apply for or obtain a youth any bull elk permit.
- (c) A youth may only obtain a youth any bull elk permit once during their youth.
- (2) The youth any bull elk hunting season and areas are published in the guidebook of the Wildlife Board for taking big game.
- (3)(a) A youth who has obtained a youth general any bull elk permit may take any bull elk, including antlerless elk, on a general any bull elk unit. Spike bull elk units are closed to youth general any bull elk permittees.
- (b) A youth who has obtained a youth general any bull elk permit may use any legal weapon to take any bull elk as specified on the permit.
- (4) A youth who has obtained a youth general any bull elk permit may not hunt during any other elk hunt or obtain any other elk permit, except as provided in Section R657-5-33(3).
- (5) Preference points shall not be awarded or utilized when applying for, or in obtaining, youth general any bull elk permits.

**R657-5-32. Premium Limited Entry and Limited Entry Bull Elk Hunts.**

- (1) To hunt in a premium limited entry or limited entry bull elk area, a hunter must obtain the respective premium limited entry or limited entry elk permit.
- (2)(a) A premium limited entry bull elk permit allows a person, using the prescribed legal weapon, to take one bull elk within the area and to hunt all limited entry bull elk seasons specified in the hunt tables, published in the proclamation of the Wildlife Board for taking big game, for the area specified on the permit, except elk cooperative wildlife management units located within a premium limited entry unit. Spike bull elk restrictions do not apply to premium limited entry elk permittees.
- (b) A limited entry bull elk permit allows a person, using the prescribed legal weapon, to take one bull elk within the area and season specified on the permit, except elk cooperative wildlife management units located within a limited entry unit. Spike bull elk restrictions do not apply to limited entry elk permittees.
- (c) "Prescribed legal weapon" means for purposes of this subsection:
  - (i) archery equipment as defined in R657-5-11(1) when hunting the archery season, excluding a crossbow or draw-lock;
  - (ii) muzzleloader equipment as defined in R657-5-10 when hunting the muzzleloader season, excluding magnifying scopes; and
  - (iii) any legal weapon, including a muzzleloader and crossbow with a fixed or variable magnifying scope or draw-lock when hunting during the any weapon season.
- (3)(a) A person who has obtained a premium limited entry, limited entry or cooperative wildlife management unit bull elk permit must report hunt information within 30 calendar days after the end of the hunting season, whether the permit holder was successful or unsuccessful in harvesting a bull elk.
- (b) Limited entry and cooperative wildlife management unit bull elk permit holders must report hunt information by telephone, or through the division's Internet address.

(c) A person who fails to comply with the requirement in Subsection (a) shall be ineligible to apply for any once-in-a-lifetime, premium limited entry, limited entry, or cooperative wildlife management unit permit or bonus points in the following year.

(d) Late questionnaires may be accepted pursuant to Rule R657-42-9(3).

(4) A person who has obtained a premium limited entry or limited entry bull elk permit may not hunt during any other elk hunt or obtain any other elk permit, except as provided in Subsections (4)(a) and R657-5-33(3).

### **R657-5-33. Antlerless Elk Hunts.**

(1) To hunt an antlerless elk, a hunter must obtain an antlerless elk permit.

(2)(a) An antlerless elk permit allows a person to take one antlerless elk using any legal weapon within the area and season as specified on the permit and in the Antlerless guidebook of the Wildlife Board for taking big game.

(b) A person may not hunt on any cooperative wildlife management units unless that person obtains an antlerless elk permit for a cooperative wildlife management unit as specified on the permit.

(3)(a) A person may obtain two elk permits each year, provided one or both of the elk permits is an antlerless elk permit.

(b) For the purposes of obtaining two elk permits, a hunter's choice elk permit may not be considered an antlerless elk permit.

(4)(a) A person who obtains an antlerless elk permit and any of the permits listed in Subsection (b) may use the antlerless elk permit during the established season for the antlerless elk permit and during the established season for the permits listed in Subsection (b) provided:

(i) the permits are both valid for the same area;

(ii) the appropriate archery equipment is used if hunting with an archery permit;

and

(iii) the appropriate muzzleloader hunt equipment is used if hunting with a muzzleloader permit.

(b)(i) General buck deer for archery, muzzleloader or any legal weapon;

(ii) general bull elk for archery, muzzleloader or any legal weapon;

(iii) limited entry buck deer for archery, muzzleloader or any legal weapon; or

(iv) Limited entry bull elk for archery, muzzleloader or any legal weapon.

(v) antlerless elk.

### **R657-5-34. Buck Pronghorn Hunts.**

(1) To hunt buck pronghorn, a hunter must obtain a buck pronghorn permit.

(2) A person who has obtained a buck pronghorn permit may not obtain any other pronghorn permit or hunt during any other pronghorn hunt.

(3)(a) A person who has obtained a limited entry or cooperative wildlife management unit buck pronghorn permit must report hunt information within 30 calendar days after the end of the hunting season, whether the permit holder was successful or unsuccessful in harvesting a buck pronghorn.



(b) Limited entry and cooperative wildlife management unit buck pronghorn permit holders must report hunt information by telephone, or through the division's Internet address.

(c) A person who fails to comply with the requirement in Subsection (a) shall be ineligible to apply for any once-in-a-lifetime, premium limited entry, limited entry, or cooperative wildlife management unit permit or bonus points in the following year.

(d) Late questionnaires may be accepted pursuant to Rule R657-42-9(3).

(4) A buck pronghorn permit allows a person [~~using any legal weapon~~] to take one buck pronghorn within the area [~~and~~], during the season, and using the weapon type specified on the permit, except [~~during the buck pronghorn archery hunt when only archery equipment may be used and~~] on buck pronghorn cooperative wildlife management unit located within a limited entry unit.

#### **R657-5-35. Doe Pronghorn Hunts.**

(1) To hunt a doe pronghorn, a hunter must obtain a doe pronghorn permit.

(2)(a) A doe pronghorn permit allows a person to take one doe pronghorn, per doe pronghorn tag, using any legal weapon within the area and season as specified on the permit and in the Antlerless guidebook of the Wildlife Board for taking big game.

(b) A person may not hunt on any cooperative wildlife management units unless that person obtains an antlerless pronghorn permit for a cooperative wildlife management unit as specified on the permit.

(3) A person who has obtained a doe pronghorn permit may not hunt during any other pronghorn hunt or obtain any other pronghorn permit.

#### **R657-5-36. Antlerless Moose Hunts.**

(1) To hunt an antlerless moose, a hunter must obtain an antlerless moose permit.

(2)(a) An antlerless moose permit allows a person to take one antlerless moose using any legal weapon within the area and season as specified on the permit and in the Antlerless guidebook of the Wildlife Board for taking big game.

(b) A person may not hunt on any cooperative wildlife management unit unless that person obtains an antlerless moose cooperative wildlife management unit as specified on the permit.

(3) A person who has obtained an antlerless moose permit may not hunt during any other moose hunt or obtain any other moose permit.

#### **R657-5-37. Bull Moose Hunts.**

(1) To hunt bull moose, a hunter must obtain a bull moose permit.

(2) A person who has obtained a bull moose permit may not obtain any other moose permit or hunt during any other moose hunt.

(3) A bull moose permit allows a person using any legal weapon to take one bull moose within the area and season specified on the permit, except in bull moose cooperative wildlife management units located within a limited entry unit.

(4)(a) A person who has obtained a bull moose permit must report hunt information within 30 calendar days after the end of the hunting season, whether the permit holder was successful or unsuccessful in harvesting a bull moose.

(b) Bull moose permit holders must report hunt information by telephone, or through the division's Internet address.

(c) A person who fails to comply with the requirement in Subsection (a) shall be ineligible to apply for any once-in-a-lifetime, premium limited entry, limited entry, or cooperative wildlife management unit permit or bonus points in the following year.

(d) Late questionnaires may be accepted pursuant to Rule R657-42-9(3).

#### **R657-5-38. Bison Hunts.**

(1) To hunt bison, a hunter must obtain a bison permit.

(2) A person who has obtained a bison permit may not obtain any other bison permit or hunt during any other bison hunt.

(3) The bison permit allows a person using any legal weapon to take a bison of either sex within the area and season as specified on the permit.

(4)(a) An orientation course is required for bison hunters who draw an Antelope Island bison permit. Hunters shall be notified of the orientation date, time and location.

(b) The Antelope Island hunt is administered by the Division of Parks and Recreation.

(5) A cow bison permit allows a person to take one cow bison using any legal weapon within the area and season as specified on the permit and in the Antlerless guidebook of the Wildlife Board for taking big game.

(6) An orientation course is required for bison hunters who draw cow bison permits. Hunters will be notified of the orientation date, time and location.

(7)(a) A person who has obtained a bison permit must report hunt information within 30 calendar days after the end of the hunting season, whether the permit holder was successful or unsuccessful in harvesting a bison.

(b) Bison permit holders must report hunt information by telephone, or through the division's Internet address.

(c) A person who fails to comply with the requirement in Subsection (a) shall be ineligible to apply for any once-in-a-lifetime, premium limited entry, limited entry, or cooperative wildlife management unit permit or bonus points in the following year.

(d) Late questionnaires may be accepted pursuant to Rule R657-42-9(3).

#### **R657-5-39. Desert Bighorn and Rocky Mountain Bighorn Sheep Hunts.**

(1) To hunt desert bighorn sheep or Rocky Mountain bighorn sheep, a hunter must obtain the respective permit.

(2) A person who has obtained a desert bighorn sheep or Rocky Mountain bighorn sheep permit may not obtain any other desert bighorn sheep or Rocky Mountain bighorn sheep permit or hunt during any other desert bighorn sheep or Rocky Mountain bighorn sheep hunt.

(3) Desert bighorn sheep and Rocky Mountain big horn sheep permits are considered separate once-in-a-lifetime hunting opportunities.

(4)(a) The desert bighorn sheep permit allows a person using any legal weapon to take one desert bighorn ram within the area and season specified on the permit.

(b) The Rocky Mountain sheep permit allows a person using any legal weapon to take one Rocky Mountain bighorn ram within the area and season specified on the permit.

(5) The permittee may attend a hunter orientation course. The division provides each permittee with the time and location of the course.

(6) All bighorn sheep hunters are encouraged to have a spotting scope with a minimum of 15 power while hunting bighorn sheep. Any ram may be legally taken, however, permittees are encouraged to take a mature ram. The terrain inhabited by bighorn sheep is extremely rugged, making this hunt extremely strenuous.

(7) Successful hunters must deliver the horns of the bighorn sheep to a division office within 72 hours of leaving the hunting area. A numbered seal will be permanently affixed to the horn indicating legal harvest.

(8)(a) A person who has obtained a desert bighorn sheep or Rocky Mountain bighorn sheep permit must report hunt information within 30 calendar days after the end of the hunting season, whether the permit holder was successful or unsuccessful in harvesting a desert bighorn sheep or Rocky Mountain bighorn sheep.

(b) Desert bighorn sheep or Rocky Mountain bighorn sheep permit holders must report hunt information by telephone, or through the division's Internet address.

(c) A person who fails to comply with the requirement in Subsection (a) shall be ineligible to apply for any once-in-a-lifetime, premium limited entry, limited entry, or cooperative wildlife management unit permit or bonus points in the following year.

(d) Late questionnaires may be accepted pursuant to Rule R657-42-9(3).

#### **R657-5-40. Rocky Mountain Goat Hunts.**

(1) To hunt Rocky Mountain goat, a hunter must obtain a Rocky Mountain goat permit.

(2) A person who has obtained a Rocky Mountain goat permit may not obtain any other Rocky Mountain goat permit or hunt during any other Rocky Mountain goat hunt.

(3) A Rocky Mountain goat of either sex may be legally taken on a hunter's choice permit. Permittees are encouraged to take a mature goat. A mature goat is a goat older than two years of age, as determined by counting the annual rings on the horn.

(4) The goat permit allows a person using any legal weapon to take one goat within the area and season specified on the permit.

(5) All goat hunters are encouraged to have a spotting scope with a minimum of 15 power while hunting goats. The terrain inhabited by Rocky Mountain goat is extremely rugged making this hunt extremely strenuous. The goat's pelage may be higher quality later in the hunting season.

(6) A female-goat only permit allows a person to take one female-goat using any legal weapon within the area and season as specified on the permit and in the Antlerless guidebook of the Wildlife Board for taking big game.

(7) An orientation course is required for Rocky Mountain goat hunters who draw female-goat only permits. Hunters will be notified of the orientation date, time and location.

(8)(a) A person who has obtained a Rocky Mountain goat permit must report hunt information within 30 calendar days after the end of the hunting season, whether the permit holder was successful or unsuccessful in harvesting a Rocky Mountain goat.

(b) Rocky Mountain goat permit holders must report hunt information by telephone, or through the division's Internet address.

(c) A person who fails to comply with the requirement in Subsection (a) shall be ineligible to apply for any once-in-a-lifetime, premium limited entry, limited entry, or cooperative wildlife management unit permit or bonus points in the following year.

(d) Late questionnaires may be accepted pursuant to Rule R657-42-9(3).

#### **R657-5-41. Depredation Hunter Pool Permits.**

(1) When big game are causing damage, or are considered a nuisance control hunts not listed in the guidebook of the Wildlife Board for taking big game may be held as provided in Rule R657-44. These hunts occur on short notice, involve small areas, and are limited to only a few hunters.

(2) For the purpose of this section nuisance is defined as a situation where big game animals are found to have moved off formally approved management units onto adjacent units or other areas not approved for that species.

#### **R657-5-42. Carcass Importation.**

(1) It is unlawful to import dead elk, mule deer, or white-tailed deer or their parts from the areas of any state, province, game management unit, equivalent wildlife management unit, or county, which has deer or elk diagnosed with Chronic Wasting Disease, except the following portions of the carcass:

(a) meat that is cut and wrapped either commercially or privately;

(b) quarters or other portion of meat with no part of the spinal column or head attached;

(c) meat that is boned out;

(d) hides with no heads attached;

(e) skull plates with antlers attached that have been cleaned of all meat and tissue;

(f) antlers with no meat or tissue attached;

(g) upper canine teeth, also known as buglers, whistlers, or ivories; or

(h) finished taxidermy heads.

(2)(a) The affected states, provinces, game management units, equivalent wildlife management units, or counties, which have deer or elk diagnosed with Chronic Wasting Disease shall be available at division offices and through the division's Internet address.

(b) Importation of harvested elk, mule deer or white-tailed deer or ~~their~~[its](#) parts from the affected areas are hereby restricted pursuant to Subsection (1).

(3) Nonresidents of Utah transporting harvested elk, mule deer, or white-tailed deer from the affected areas are exempt if they:

(a) do not leave any part of the harvested animal in Utah and do not stay more than 24 hours in the state of Utah;

(b) do not have their deer or elk processed in Utah; or

(c) do not leave any parts of the carcass in Utah.

#### **R657-5-43. Chronic Wasting Disease - Infected Animals.**

(1) Any person who under the authority of a permit issued by the division legally takes a deer or elk that is later confirmed to be infected with Chronic Wasting Disease may:

(a) retain the entire carcass of the animal;

(b) retain any parts of the carcass, including antlers, and surrender the remainder to the division for proper disposal; or

(c) surrender all portions of the carcass in their actual or constructive possession, including antlers, to the division and receive a free new permit the following year for the same hunt.

(2) The new permit issued pursuant to Subsection (1)(c) shall be for the same species, sex, weapon type, unit, region, and otherwise subject to all the restrictions and conditions imposed on the original permit, except season dates for the permit shall follow the guidebook of the Wildlife Board for taking big game published in the year the new permit is valid.

(3) Notwithstanding other rules to the contrary, private landowners and landowner associations may refuse access to private property to persons possessing new permits issued under Subsection (1)(c).

#### **R657-5-44. Management Bull Elk Hunt.**

(1)(a) For the purposes of this section "management bull" means any bull elk with 5 points or less on at least one antler. A point means a projection longer than one inch, measured from its base to its tip.

(b) For purposes of this section "youth" means any person ~~[18]~~[17](#) years of age or younger on ~~[the opening day of the management bull elk archery season published in the guidebook of the Wildlife Board for taking big game.]~~[July 31](#).

(c) For the purposes of this section "senior" means any person 65 years of age or older on the opening day of the management bull elk archery season published in the guidebook of the Wildlife Board for taking big game.

(2)(a) Management bull elk permits shall be distributed pursuant to R657-62 with thirty percent of the permits being allocated to youth, thirty percent to seniors and the remaining forty percent to hunters of all ages.

(3) Management bull elk permit holders may take one management bull elk during the season, on the area and with the weapon type specified on the permit.

Management bull elk hunting seasons, areas and weapon types are published in the guidebook of the Wildlife Board for taking big game.

(4)(a) A person who has obtained a management bull elk permit must report hunt information within 30 calendar days after the end of the hunting season, whether the permit holder was successful or unsuccessful in harvesting a management bull elk.

(b) Management bull elk permit holders must report hunt information by telephone, or through the division's Internet address.

(5)(a) Management bull elk permit holders who successfully harvest a management bull elk, as defined in Subsection (1)(a) must have their animal inspected by the division.

(b) Successful hunters must deliver the head and antlers of the elk they harvest to a division office for inspection within 48 hours after the date of kill.

(6) Management bull elk permit holders may not retain possession of any harvested bull elk that fails to satisfy the definition requirements in Subsection (1)(a).

(7) A person who has obtained a management bull elk permit may not hunt during any other elk hunt or obtain any other elk permit, except as provided in Section R657-5-33(3).

#### **R657-5-45. General Any Weapon Buck Deer and Bull Elk Combination Hunt.**

(1) Permit numbers, season dates and unit boundary descriptions for the general any weapon buck deer and bull elk combination hunt shall be established in the guidebook of the Wildlife Board for taking big game.

(2) A person who obtains a general any weapon buck deer and bull elk combination permit may use any legal weapon to take one buck deer and one bull elk during the season and within the unit specified on the permit.

(a) A general any weapon buck deer and bull elk combination permit does not authorize the holder to hunt deer or elk within any cooperative wildlife management unit.

(3) A person who has obtained a general any weapon buck deer and bull elk combination permit may not hunt during any other deer or elk hunt or obtain any other deer or elk permit, except:

(a) antlerless deer, as provided in Subsection R657-5-27, and

(b) antlerless elk, as provided in Subsection R657-5-33.

(4)(a) Lifetime license holders may obtain a general any weapon buck deer and bull elk combination permit.

(b) Upon obtaining a general any weapon buck deer and bull elk combination permit, the lifetime license holder foregoes any rights to receive a buck deer permit for the general archery, general any weapon or general muzzleloader deer hunts as provided in Section 23-19-17.5.

(c) A refund or credit is not issued for the general archery, general any weapon or general muzzleloader deer permit.

#### **R657-5-46. Management Buck Deer Hunt.**



(1)(a) For the purposes of this section “management buck” means any buck deer with 3 points or less on at least one antler above and including the first fork in the antler. A point means a projection longer than one inch, measured from its base to its tip. The eye guard is not counted as a point.

(b) For purposes of this section "youth" means any person ~~[18]~~17 years of age or younger on ~~[the opening day of the management buck deer archery season published in the guidebook of the Wildlife Board for taking big game.]~~July 31.

(c) For the purposes of this section “senior” means any person 65 years of age or older on the opening day of the management buck deer archery season published in the guidebook of the Wildlife Board for taking big game.

(2) Management buck deer permits shall be distributed pursuant to rule R657-62 with thirty percent of the permits being allocated to youth, thirty percent to seniors and the remaining forty percent to hunters of all ages.

(3) Management buck deer permit holders may take one management buck deer during the season, on the area and with the weapon type specified on the permit. Management buck deer hunting seasons, areas and weapon types are published in the guidebook of the Wildlife Board for taking big game.

(4)(a) A person who has obtained a management buck deer permit must report hunt information within 30 calendar days after the end of the hunting season, whether the permit holder was successful or unsuccessful in harvesting a management buck deer.

(b) Management buck deer permit holders must report hunt information by telephone, or through the division's Internet address.

(5)(a) Management buck deer permit holders who successfully harvest a management buck deer, as defined in Subsection (1)(a) must have their animal inspected by the division.

(b) Successful hunters must deliver the head and antlers of the deer they harvest to a division office for inspection within 48 hours after the date of kill.

(6) Management buck deer permit holders may not retain possession of any harvested buck deer that fails to satisfy the definition requirements in Subsection (1)(a).

(7) A person who has obtained a management buck deer permit may not hunt during any other deer hunt or obtain any other deer permit, except as provided in Section R657-5-28(4).

**KEY: wildlife, game laws, big game seasons**

**Date of Enactment or Last Substantive Amendment: July 9, 2012**

**Notice of Continuation: November 1, 2010**

**Authorizing, and Implemented or Interpreted Law: 23-14-18; 23-14-19; 23-16-5; 23-16-6**



**GARY R. HERBERT**  
Governor

**SPENCER R COX**  
Lieutenant Governor

# State of Utah

## DEPARTMENT OF NATURAL RESOURCES

**MICHAEL R. STYLER**  
Executive Director

### Division of Wildlife Resources

**GREGORY SHEEHAN**  
Division Director

## MEMORANDUM

**Date:** October 22, 2013

**To:** Wildlife Board and Regional Advisory Council Members

**From:** Scott McFarlane, Private Lands – Public Wildlife Coordinator

**Subject:** **2014 BUCK/BULL CWMU AND LANDOWNER ASSOCIATION RECOMMENDATIONS**

The following is a summary of the 2014 Bucks and Bulls CWMU and Landowner Association recommendations. There are three types of applications received for the CWMUs: New, Renewal, and Change applications.

- 13 - CWMUs required renewal for 2014.
- 7 - applications were received for changes to current applications for permit number, splits, or season date changes.
- There are 4 new applications:
  - 2 - due to >34% land ownership changes.
  - 2 – Brand new applications
- 118 CWMUS for the 2014 hunting season if all are approved.



The total recommended permits for 2014 are:

	<b>PRIVATE PERMITS</b>	<b>PUBLIC PERMITS</b>
<b>BUCK DEER</b>	1926	255
<b>MANAGEMENT BUCK DEER</b>	4	1
<b>BULL ELK</b>	885	131
<b>BUCK PRONGHORN</b>	76	54
<b>BULL MOOSE</b>	46	28
<b>TOTALS</b>	<b>2937</b>	<b>469 (14%)</b>

Please find attached a summary of the CWMU applications that require board action. Applications for individual CWMU units are available upon request.

#### **2014 LANDOWNER ASSOCIATION RECOMMENDATIONS**

- 14 Landowner Association applications were received
- DWR recommends approval of 10 applications as submitted
- A total of 114 buck deer, 1 management buck deer, 76 elk, and 8 pronghorn vouchers are recommended for Landowner Associations for the 2014 season.
- 4 split recommendations with the Division are as follows:

<b>LOA NAME</b>	<b>SPECIES</b>	<b>PERMITS REQUESTED</b>	<b>PERMITS QUALIFIED FOR</b>	<b>DIVISION RECOMMENDATION</b>	<b>REASON</b>
<b>Vernon LOA</b>	Buck deer	35	28	28	Reduction in unit permits
<b>Paunsaugunt Landowner Wildlife Assoc.</b>	Mgmt buck deer	4	1	1	Reduction in unit permits
<b>Panguitch Lake LOA</b>	Bull elk	8	7	7	Reduction in unit permits
<b>Indian Peaks LOA</b>	Bull elk	3 Premium	3	3	LOA wants premium permits which are not allowed for by rule

Applications for Landowner associations are available upon request.

#### **PROPOSED CHANGE TO LANDOWNER PERMIT RULE R657-43**

The Division is proposing a change to the Landowner Permit Rule to make it consistent with other rules to have applications and Certificates of Registrations for Landowner Associations valid for a three year period instead of the current annual application process. The rule change would allow Landowner Associations to make amendments annually to allow for property ownership, and other changes to the original application, and also for the Division to adjust permit numbers if limited entry permit numbers

Page 3  
October 24, 2013  
Subject:

should change annually. This should help ease the process of Landowner Associations having to acquire each individual landowner's signature annually.

**2013 Renewal Applications**

<b>CWMU Name</b>	<b>Region</b>	<b>Change From Previous Application</b>
Jacobs Creek	NR	Change deer hunt date to 9/1 - 10/31 Increase buck deer permits from 10 to 20
Blue Creek	NR	No Changes
Grass Valley/Clark Canyon	NR	Added 1400 acres Increase buck deer permits from 120 to 130 Increase Bull Elk Permits from 80 to 90 Decrease Private Bull Moose permits by 1 over the next three years Request Bull Elk Variance again, 9/1 - 11/20
Lazy H Ranch	NR	No Changes
Mountain Top	NR	No Changes
Neil Creek	NR	Decrease Acreage by 136
Stillman Creek Ranch	NR	Decreased Acreage Reduced Buck Deer Permits From 60 to 40 Removed Elk and Moose (Under minimum acreage)
TJ Cattle Company	NR	No Changes
Woodruff Creek South	NR	No Changes
Emma Park	SE	No Changes -decreased acreage by 637 ac.
Minnie Maude Ridge	SE	Board needs to rule on inclusion of State Section Region recommends against approval of including SITLA section 2 - was removed in 2011 upon recommendation of CWMU Advisory Committee Permit Nos. would be: 36/4 Buck Deer, 36/4 Bull Elk W/O State Section 36/6 Buck Deer, 36/5 Bull Elk W/State Sec. included
Redd Ranches	SE	No Changes
Black Point	S	No Changes



**New Applications**

Grouse Creek	NR	Existing CWMU, changed ownership, no changes from previous application Elk only CWU
Hardscrabble	NR	Existing CWMU, changed ownership, no changes from previous application Deer, Elk, and Moose CWMU
TL Bar Ranch	NR	New CWMU - Pronghorn only - Request 2 Buck permits, 1 Private, 1 Public 5,180 ac CWMU with 12.4% public land
Spring Canyon	SER	New CWMU - Deer only - Requesting 10 Buck Deer Permits 8/2 Region recommends denial of application- Cannot make minimum contiguous acreage-short 48 acres

**Change Applications Requiring RAC/Board Approval**

Ingam Peak	NR	Added Bull Elk Permits to CWMU. 6 total permits-4 private, 2 public
Nucor West	NR	Added 480 ac. Decreased Buck Deer Permits-was 20 total, 18/2 Now 10 total, 9/1
Washakie	NR	Added 10 Buck Deer Permits-Was 10 total, 9/1 New 20 total, 18/2
Whites Valley	NR	Decreased Buck Deer Permits-Was 20 total, 17/3 New 13 total, 11/2
Deseret	NR	Increased Acreage by 4,489 ac. Increased Buck Deer Permits-Was 89 total, 75/14 New 93 total, 78/15 Increased Bull Elk Permits- Was 103 Total, 82/21 New 106 total, 89/17 Changed Bull Elk Private/Public Split from 85:15 to 90:10 Increased Buck Pronghorn Permits-Was 70 total, 39/31 New 74 total, 41/33
Oak Ranch	SR	Decreased Buck Deer Permits-Was 19 total, 16/3 New 14 total, 12/2 Deer population has decreased
Scofield Canyons	SER	Decreased Buck Deer Permits-Was 20 total, 18/2 New 10 total, 9/1

Landowner Association Name	Limited Entry Unit Name	Acres private land/habitat in Associaion	Acres Private land/habitat in Limited Entry Unit	% Private lands ≥ 51%	Species	2013 Permits	2014 Qualified	2014	2014 DWR	Comments
								Requested	Recommendation	
Deep Creek Landowner Association	West Desert, Deep Creek	1,722	2,897	59%	Bull elk	1	2	2	2	Private lands have higher proportion of elk in the unit.
Vernon Landowner Association	West Desert, Vernon	60,924	90,264	67%	Buck deer	37	28	35	28	LE permits decreased in unit
Book Cliffs LOA	Book Cliffs	67,398	96,279	70%	Buck deer	26	21	21	21	
Book Cliffs LOA	Book Cliffs	67,398	96,279	70%	Bull elk	9	9	9	9	
Book Cliffs LOA	Book Cliffs	67,398	96,279	70%	Buck pronghorn	3	2	2	2	
Diamond Mountain LOA	South Slope, Diamond Mountain	82,144	82,144	100%	Buck deer	44	44	44	44	
Diamond Mountain LOA	South Slope, Diamond Mountain	82,144	82,144	100%	Bull elk	34	34	34	34	
Three Corners LOA	North Slope, Three Corners	4,410	7,169	62%	Bull elk	5	5	5	5	
Elk Ridge LOA	San Juan, Elk Ridge	3,778	4,640	81%	buck deer	2	2	2	2	
San Juan Elk Landowner Association	San Juan, Elk Ridge	35,511	57,200	62%	Bull elk	6	5	5	5	LE permits decreased in unit
Indian Peaks Landowner Association	Southwest Desert	19,066	28,306	67%	Bull elk	3	3	3	3	Premium tags hunt all seasons - rule does not allow for premium permits
Monroe Mountain LOA	Monroe Mountain	16,873	26,598	63%	Bull elk	4	4	4	4	
Pahvant Mountain LOA	Pahvant	21,110	41,617	51%	Bull elk	5	5	5	5	
Panguitch Lake LOA	Panguitch Lake	38,251	66,346	58%	Bull elk	8	7	8	7	Reduction in unit permits - reduce LOA permits accordingly
Paunsaugunt Landowner Wildlife Association	Paunsaugunt	46,633	73,362	64%	Buck deer	18	18	18	18	
Paunsaugunt Landowner Wildlife Association	Paunsaugunt	46,633	73,362	64%	Buck deer manage	3	1	4	1	Reduction in unit permits - reduce LOA accordingly - LOA disagrees
Paunsaugunt Elk LOA	Paunsaugunt	19,073	36,054	53%	Bull elk	2	2	2	2	
South Fork of Sevier River LOA	Mount Dutton and Paunsaugunt	16,357	30,582	53%	Buck pronghorn	4	6	6	6	
Total		696,823				214	198	209	198	

14 Total Landowner Associations

buck deer	130	114	124	114
bull elk	77	76	77	76
buck pronghorn	7	8	8	8

## 2014 COOPERATIVE WILDLIFE MANAGEMENT UNITS

### NORTHERN REGION

---

<b>Blue Creek</b>		Private Acres	7448	100 %	Public Acres	0	0 %	
Unit # 1		<u>CWMU Request</u>			<u>DWR Recommendation (if Different)</u>			
	Private	Public	Season Dates	Ratio	Private	Public	Season Dates	Ratio
DEER	9	1	9/11-11/10/2014	90:10				

---

<b>Deseret</b>		Private Acres	211751	93 %	Public Acres	15359	6.8 %	
Unit # 4		<u>CWMU Request</u>			<u>DWR Recommendation (if Different)</u>			
	Private	Public	Season Dates	Ratio	Private	Public	Season Dates	Ratio
DEER	78	15	9/11-11/10/2014	90:10				
ELK	89	17	9/01-11/20/2014	90:10				
MOOSE	2	1	9/01-10/31/2014	60:40				
PRONGHORN	41	33	9/01-10/31/2014	60:40				

Compensation for inclusion of public land - 6 deer, 5 elk, 2 buck pronghorn and 3 doe pronghorn. Requested bull elk variance to 11/20, division agrees.

---

<b>Grass Valley/Clark Canyon</b>		Private Acres	67990	100 %	Public Acres	0	0 %	
Unit # 6		<u>CWMU Request</u>			<u>DWR Recommendation (if Different)</u>			
	Private	Public	Season Dates	Ratio	Private	Public	Season Dates	Ratio
DEER	117	13	9/11-11/10/2014	90:10				
ELK	81	9	9/01-11/20/2014	90:10				
MOOSE	4	4	9/01-10/31/2014	60:40				

CWMU has requested an elk season variance of 9/1-11/20, Division is in agreement

---

<b>Grouse Creek</b>		Private Acres	30352	57 %	Public Acres	23040	43 %	
Unit # 1		<u>CWMU Request</u>			<u>DWR Recommendation (if Different)</u>			
	Private	Public	Season Dates	Ratio	Private	Public	Season Dates	Ratio
ELK	2	2	9/01-10/31/2014	80:20				

Compensation for inclusion of public land - one elk every other year.

---

<b>Hardscrabble</b>		Private Acres	15995	100 %	Public Acres	0	0 %	
Unit # 5		<u>CWMU Request</u>			<u>DWR Recommendation (if Different)</u>			
	Private	Public	Season Dates	Ratio	Private	Public	Season Dates	Ratio
DEER	18	2	9/11-11/10/2014	90:10				
ELK	18	2	9/01-10/31/2014	90:10				
MOOSE	2	2	9/01-10/31/2014	60:40				

## NORTHERN REGION

---

<b>Ingham Peak</b>		Private Acres		16628	80 %	Public Acres		4160	20 %
Unit # 1	<u>CWMU Request</u>				<u>DWR Recommendation (if Different)</u>				
	Private	Public	Season Dates	Ratio	Private	Public	Season Dates	Ratio	
DEER	26	11	9/11-11/10/2014	90:10					
ELK	4	2	9/01-10/31/2014	90:10					

Compensation for inclusion of public land - 7 deer

---

<b>Jacob's Creek</b>		Private Acres		13017	100 %	Public Acres		0	0 %
Unit # 5	<u>CWMU Request</u>				<u>DWR Recommendation (if Different)</u>				
	Private	Public	Season Dates	Ratio	Private	Public	Season Dates	Ratio	
DEER	18	2	9/01-10/31/2014	90:10					
ELK	9	1	9/01-10/31/2014	90:10					
MOOSE	1	1	9/01-10/31/2014	60:40					

---

<b>Lazy H Ranch</b>		Private Acres		5102	100 %	Public Acres		0	0 %
Unit # 5	<u>CWMU Request</u>				<u>DWR Recommendation (if Different)</u>				
	Private	Public	Season Dates	Ratio	Private	Public	Season Dates	Ratio	
DEER	9	1	9/11-11/10/2014	90:10					

---

<b>Mountain Top</b>		Private Acres		11140	100 %	Public Acres		0	0 %
Unit # 5	<u>CWMU Request</u>				<u>DWR Recommendation (if Different)</u>				
	Private	Public	Season Dates	Ratio	Private	Public	Season Dates	Ratio	
DEER	18	2	9/11-11/10/2014	90:10					
ELK	18	2	9/01-10/31/2014	90:10					

---

<b>Neil Creek</b>		Private Acres		5648	100 %	Public Acres		0	0 %
Unit # 6	<u>CWMU Request</u>				<u>DWR Recommendation (if Different)</u>				
	Private	Public	Season Dates	Ratio	Private	Public	Season Dates	Ratio	
DEER	18	2	9/11-11/10/2014	90:10					

---

<b>Nucor West</b>		Private Acres		6960	100 %	Public Acres		0	0 %
Unit # 1	<u>CWMU Request</u>				<u>DWR Recommendation (if Different)</u>				
	Private	Public	Season Dates	Ratio	Private	Public	Season Dates	Ratio	
DEER	9	1	9/11-11/10/2014	90:10					

---

<b>Stillman Creek Ranch</b>		Private Acres		5842	100 %	Public Acres		0	0 %
Unit # 6	<u>CWMU Request</u>				<u>DWR Recommendation (if Different)</u>				
	Private	Public	Season Dates	Ratio	Private	Public	Season Dates	Ratio	
DEER	36	4	9/01-10/31/2014	90:10					

## NORTHERN REGION

### TJ Cattle Company

		Private Acres			7344	100 %	Public Acres			0	0 %
Unit # 5		<u>CWMU Request</u>				<u>DWR Recommendation (if Different)</u>					
	Private	Public	Season Dates	Ratio	Private	Public	Season Dates	Ratio			
DEER	9	1	9/11-11/10/2014	90:10							

### TL Bar Ranch

		Private Acres			4540	88 %	Public Acres			640	12 %
Unit # 1		<u>CWMU Request</u>				<u>DWR Recommendation (if Different)</u>					
	Private	Public	Season Dates	Ratio	Private	Public	Season Dates	Ratio			
PRONGHORN	1	1	9/01-10/31/2014	60:40							
12.4% additional permits available to public, currently only 2 permits available to CWMU - 50-50 split											

### Washakie

		Private Acres			13571	100 %	Public Acres			0	0 %
Unit # 1		<u>CWMU Request</u>				<u>DWR Recommendation (if Different)</u>					
	Private	Public	Season Dates	Ratio	Private	Public	Season Dates	Ratio			
DEER	18	2	9/11-11/10/2014	90:10							

### Whites Valley

		Private Acres			8504	96 %	Public Acres			320	3.6 %
Unit # 1		<u>CWMU Request</u>				<u>DWR Recommendation (if Different)</u>					
	Private	Public	Season Dates	Ratio	Private	Public	Season Dates	Ratio			
DEER	11	2	9/11-11/10/2014	90:10							
Compensation for inclusion of public land - 1 deer. -					<b>No CWMU in 2012, new application for 2013</b>						

### Woodruff Creek South

		Private Acres			14412	92 %	Public Acres			1270	8.1 %
Unit # 4		<u>CWMU Request</u>				<u>DWR Recommendation (if Different)</u>					
	Private	Public	Season Dates	Ratio	Private	Public	Season Dates	Ratio			
DEER	25	3	9/11-11/10/2014	90:10							
ELK	22	3	9/01-10/31/2014	90:10							
MOOSE	2	2	9/01-10/31/2014	60:40							
Compensation for inclusion of public land 1270 acres providing 2,937 acres private											



## SOUTHEASTERN REGION

<b>Emma Park</b>		Private Acres			20976	95 %	Public Acres			1160	5.2 %
Unit # 17		<u>CWMU Request</u>				<u>DWR Recommendation (if Different)</u>					
	Private	Public	Season Dates	Ratio	Private	Public	Season Dates	Ratio			
DEER	27	3	9/01-10/31/2014	90:10							
ELK	9	2	9/01-10/31/2014	80:20							
Compensation for inclusion of public land - 1533 acres open.											
<b>Minnie Maud Ridge</b>		Private Acres			15957	100 %	Public Acres			80	0.5 %
Unit # 11		<u>CWMU Request</u>				<u>DWR Recommendation (if Different)</u>					
	Private	Public	Season Dates	Ratio	Private	Public	Season Dates	Ratio			
DEER	36	6	9/01-10/31/2014	90:10		4					
ELK	36	5	9/01-10/31/2014	90:10		4					
1 bull elk and 1 buck deer added for compensation for inclusion of public lands					<b>CWMU requests addition of state sec.- does not fit rule</b>						
<b>Redd Ranches</b>		Private Acres			19700	100 %	Public Acres			0	0 %
Unit # 13		<u>CWMU Request</u>				<u>DWR Recommendation (if Different)</u>					
	Private	Public	Season Dates	Ratio	Private	Public	Season Dates	Ratio			
DEER	17	2	9/01-10/31/2014	90:10							
ELK	17	2	9/01-10/31/2014	90:10							
<b>Scofield Canyons</b>		Private Acres			15610	100 %	Public Acres			40	0.3 %
Unit # 16		<u>CWMU Request</u>				<u>DWR Recommendation (if Different)</u>					
	Private	Public	Season Dates	Ratio	Private	Public	Season Dates	Ratio			
DEER	9	1	9/11-11/10/2014	90:10							
ELK	6	1	9/01-10/31/2014	80:20							
<b>Spring Canyon</b>		Private Acres			4305	87 %	Public Acres			640	13 %
Unit # 12		<u>CWMU Request</u>				<u>DWR Recommendation (if Different)</u>					
	Private	Public	Season Dates	Ratio	Private	Public	Season Dates	Ratio			
DEER	8	2	9/11-11/10/2014	90:10	0	0					
					<b>Recommended denial of Application- insufficient acreage</b>						

## SOUTHERN REGION

### Black Point

		Private Acres			17664	100 %	Public Acres		0	0 %
Unit # 21		<u>CWMU Request</u>				<u>DWR Recommendation (if Different)</u>				
	Private	Public	Season Dates	Ratio	Private	Public	Season Dates	Ratio		
PRONGHORN	3	2	9/01-10/31/2014	60:40						

### Oak Ranch

		Private Acres			4980	98 %	Public Acres		120	2.4 %
Unit # 16		<u>CWMU Request</u>				<u>DWR Recommendation (if Different)</u>				
	Private	Public	Season Dates	Ratio	Private	Public	Season Dates	Ratio		
DEER	12	2	9/11-11/10/2014	90:10						
Compensation for inclusion of public land - 1 deer additional permit.										

## **R657. Natural Resources, Wildlife Resources.**

### **R657-43. Landowner Permits.**

#### **R657-43-1. Purpose and Authority.**

(1) Under authority of Sections 23-14-18 and 23-14-19, this rule provides the standards and procedures for private landowners to obtain landowner permits for:

(a) taking buck deer within the general unit hunt boundary area where the landowner's property is located during the general deer hunt only; and

(b) taking bull elk, buck deer or buck pronghorn within a limited entry unit.

(2) In addition to this rule, any person who receives a landowner permit must abide by Rule R657-5 and the guidebook of the Wildlife Board for taking big game.

(3) The intent of the general landowner buck deer permit is to provide an opportunity for landowners, lessees, or their immediate family, whose property provides habitat for deer, to purchase a general deer permit for the general unit hunt boundary area where the landowner's property is located.

(4) The intent of the limited entry landowner permit is to provide an opportunity for landowners, whose property provides habitat for deer, elk, or pronghorn, to be allocated a restricted number of permits for a limited entry bull elk, buck deer, or buck pronghorn unit, where the landowner's property is located.

Allowing landowners a restricted number of permits:

(a) encourages landowners to manage their land for wildlife;

(b) compensates the landowner for providing private land as habitat for wildlife; and

(c) allows the division to increase big game numbers on specific units.

#### **R657-43-2. Definitions.**

(1) Terms used in this rule are defined in Section 23-13-2.

(2) In addition:

(a) "Eligible property" means:

(i) private land that provides habitat for deer, elk or pronghorn as determined by the division of Wildlife Resources;

(ii) private land that is not used in the operation of a Cooperative Wildlife Management Unit;

(iii) private land that is not used in the operation of an elk farm or elk hunting park;

(iv) land in agricultural use as provided in Section 59-2-502 and eligible for agricultural use valuation as provided in Sections 59-2-503 and 59-2-504; and

(v) for the purpose of receiving general buck deer permits, a minimum of 640 acres of private land owned or leased by one landowner within the general unit hunt boundary; or

(vi) private land, including crop land owned by members of a landowner association for limited entry permits.

(b) “Immediate family” means the landowner’s or lessee’s spouse, children, son-in-law, daughter-in-law, father, mother, father-in-law, mother-in-law, brother, sister, brother-in-law, sister-in-law, stepchildren, and grandchildren.

(c) “Landowner” means any person, partnership, or corporation who owns property in Utah and whose name appears on a deed as the owner of eligible property or whose name appears as the purchaser on a contract for sale of eligible property.

(d) “Landowner association” means an organization of private landowners who own property within a limited entry unit, organized for the purpose of working with the division.

(e) “Lessee” means any person, partnership, or corporation whose name appears as the Lessee on a written lease, for at least a one-year period, for eligible property used for farming or ranching purposes, and who is in actual physical control of the eligible property.

(f) “Limited entry unit” means a specified geographical area that is closed to hunting deer, elk or pronghorn to any person who has not obtained a valid permit to hunt in that unit.

(g) “Voucher” means a document issued by the division to a landowner, landowner association, or Cooperative Wildlife Management Unit operator, allowing a landowner, landowner association, or Cooperative Wildlife Management Unit operator to designate who may purchase a landowner big game hunting permit from a division office.

### **R657-43-3. Qualifications for General Landowner Buck Deer Permits.**

(1) The director, upon approval of the Wildlife Board, may establish a number of general landowner buck deer permits within each region to be offered to eligible landowners or lessees for the general deer hunting season only.

(2) Only private lands will be considered in qualifying for general landowner buck deer permits. Public or state lands are not eligible.

(3) Crop lands will be considered in qualifying for general landowner buck deer permits if the crop lands provide habitat for deer and contribute to meeting unit management plan objectives.

(4) General landowner buck deer permits are limited to resident or nonresident landowners or lessees, and members of their immediate family.

**R657-43-4. Qualifications for Limited Entry Permits.**

(1) The Director, upon approval of the Wildlife Board, may establish a number of bull elk, buck deer and buck pronghorn limited entry permits to be offered to an eligible landowner association.

(2) Limited entry landowner permits are available for taking buck deer, bull elk or buck pronghorn, and may only be used on designated limited entry units.

(3) Only private lands that do not qualify for Cooperative Wildlife Management Units will be considered for limited entry landowner permits. Public or state lands are not eligible.

(4) Only private lands that qualify as eligible property will be considered for limited entry landowner permits.

(5) Applications for limited entry landowner permits will be received from landowner associations only.

(6) Only one landowner association, per species, may be formed for each limited entry unit as follows:

(a) A landowner association may be formed only if a simple majority of landowners, representing 51 percent of the eligible private lands within the herd unit, enter into a written agreement to form the association.

(b) The association may not unreasonably restrict membership to other qualified landowners in the unit.

(c) Each landowner association must elect a chairperson to represent the landowner association.

(d) The landowner association chairperson shall act as liaison with the division and the Wildlife Board.

(e) A landowner or landowner association may not restrict legal established passage through private land to access public lands for the purpose of hunting.

**R657-43-5. Application for General Landowner Buck Deer Permits.**

(1) Applications for general landowner buck deer permits are available from division offices.

(2) Only one eligible landowner or lessee may submit an application for the same parcel of land within the respective general unit hunt boundary area.

(3) In cases where more than one application is received for the same parcel of land, all applications will be rejected.



- (4) Applications must include:
  - (a) total acres owned within the respective general unit hunt boundary area;
  - (b) signature of the landowner; and
  - (c) location of the private lands, acres owned, county and region.
- (5) In cases where the landowner's or lessee's land is in more than one general unit hunt boundary area, the landowner or lessee may select one of those units from which to receive the permit.
- (6) a non-refundable handling fee must accompany each application.
- (7) a landowner may not apply for or obtain a general landowner buck deer permit without possessing a Utah hunting or combination license.
- (8) Applications will be available by January 7.
- (9) Applications must be completed and returned to the regional division office.
- (10) The signature on the application will serve as an affidavit certifying ownership.

**R657-43-6. Application for Limited Entry Permits.**

- (1) Applications for limited entry landowner permits are available from division offices and from division wildlife biologists.
- (2) Applications to receive limited entry landowner permits must be submitted by a landowner association for lands within the limited entry hunt unit where the private lands are located.
- (3) Applications must include:
  - (a) total acres owned by the association within the limited entry hunting unit and a map indicating the privately owned big game habitat;
  - (b) signature of each of the landowners within the association including acres owned, with said signature serving as an affidavit certifying ownership;
  - (c) a distribution plan for the allocation of limited entry permits by the association;
  - (d) a copy of the association by-laws; and
  - (e) a non-refundable handling fee.
- (4) The division shall, upon request of the applicant, provide assistance in preparing the application.
- (5) Applications must be completed and returned to the appropriate division office by September 1 [~~annually~~ st of the year prior to when hunting is to occur].

(6) The division shall forward the application, its recommendation, and other related documentation to the Regional Wildlife Advisory Councils for public review and consideration.

(7) Recommendations by the Councils will then be forwarded to the Wildlife Board for review and action.

(8) Upon [~~approval by~~ receiving the application, and recommendations from the Regional Advisory Councils and the division, the Wildlife Board [~~, a Certificate of Registration will be issued to the landowner association.~~] may:

(a) authorize the issuance of a three year certificate of registration allowing the landowner association to operate; or

(b) deny or partially deny the application and provide the landowner association with reasons for the decision.

(9)(a) A landowner association certificate of registration, including any variance granted under R657-43-8(6), must be renewed every three years. (b)(i) Notwithstanding Subsection (9)(a), the Wildlife Board may annually modify permit types, numbers, and associated seasons authorized in a certificate of registration when necessary to achieve unit management objectives or otherwise comply with applicable law.

(ii) The division shall annually review the permit types, numbers, and seasons authorized by a certificate of registration issued under this Section and recommend modifications when necessary to achieve unit management objectives or otherwise comply with applicable law.

(iii) The division's recommendation and accompanying justification will be forwarded to the affected landowner association and the Regional Advisory Councils for review and recommendation.

(iv) The Wildlife Board shall consider the recommendations made by the division, Regional Advisory Councils, and landowner association and make a final decision on the proposed modifications consistent with the requirements in Subsection (9)(b).

(10)(a) A landowner association may petition to amend a certificate of registration upon submitting a written request to the regional division office where the landowner association is located.

(b) Amendment of the certificate of registration is required for changes in:

(i) permit numbers;

(ii) landowner association's:

(A) by-laws; or

(B) distribution plan for the allocation of limited entry permits among its members;

(iii) acreage;

(iv) land ownership; or

(v) any other matter related to the management and operation of the landowner association not originally included in the certificate of registration.

(c) Requests for amendments dealing with permit numbers or permit allocation among association members:

(i) may be initiated by the landowner association or the division;

(ii) are due on September 1st of the year prior to when hunting is to occur;  
and

(iii) shall be forwarded to the Regional Advisory Councils and Wildlife Board for consideration and approval.

(A) Upon approval by the Wildlife Board, an amendment to the original certificate of registration shall be issued in writing.

(d) All other requests for amendments shall be reviewed by the region and Wildlife Section and, upon approval by the division director, an amendment to the original certificate of registration shall be issued in writing.

### **R657-43-7. General Permits and Season Dates.**

(1) The following number of general landowner buck deer permits may be available to a landowner or lessee:

(a) one general landowner buck deer permit may be issued for eligible property of 640 acres; and

(b) one additional general landowner buck deer permit may be issued for each additional 640 acres of eligible property.

(c) If an individual has both owned and leased eligible property, the acreage may be combined in determining the number of permits to be issued.

(2) Permittees may select only one general landowner buck deer permit (archery, rifle or muzzleloader) as provided in the guidebook of the Wildlife Board for taking big game.

(3)(a) General landowner buck deer permits are for personal use only and may not be transferred to any other person.

(b) If the landowner or lessee is a corporation, the person eligible for the permit must be a shareholder, or immediate family member of a shareholder, designated by the corporation.

(4) Any person who is issued a general landowner buck deer permit under this rule is subject to all season dates, weapon restrictions and any other regulations as provided in the guidebook of the Wildlife Board for taking big game.

(5) The fee for a general landowner buck deer permit is the same as the fee for a general season, general archery or general muzzleloader buck deer permit.

(6) Nothing in this rule shall be construed to allow any person to obtain more than one general buck deer permit from any source or take more than one buck deer during any one year.

(7) Permits will be issued beginning in June, in the order that applications are received, and permits will continue to be issued until all permits for each region have been issued.

(8) To receive a general landowner buck deer permit, the eligible person must possess or obtain a Utah hunting or combination license.

#### **R657-43-8. Limited Entry Permits and Season Dates.**

(1) Only bull elk, buck deer or buck pronghorn limited entry permits may be applied for by the landowner association.

(2)(a) The division and landowner chairperson shall jointly recommend the number of permits to be issued to the landowner association.

(b) When consensus between the landowner chairperson and the division is not reached, applications shall include justification for permit numbers for review by the Wildlife Regional Advisory Councils and the Wildlife Board.

(3) Permit numbers shall fall within the herd unit management guidelines. Permit numbers will be based on:

(a) the percent of private land big game habitat within the unit that is used by wildlife; or

(b) the percentage of use by wildlife on the private lands.

(4) Landowners receiving vouchers may personally use the vouchers or reassign the vouchers to any legal hunter.

(5) All landowners who receive vouchers, and transfer the vouchers to other hunters must:

(a) allow those hunters receiving the vouchers access to their private lands for hunting; and

(b) allow the same number of public hunters with valid permits, equal to the number of vouchers transferred, to access the landowner association's private land for hunting during the appropriate limited entry bull elk, buck deer or buck pronghorn hunting season, except as provided in Subsection (6).

(6)(a) Landowners who transfer vouchers to other hunters may deny public hunters access to the landowner association's private land for hunting by requesting, through the landowner association, a variance to Subsection (5)(b) from the Wildlife Board.

(b) The requested variance must be provided by the landowner association in writing to the division 30 days prior to the appropriate Regional Advisory Council meeting scheduled to review Rule R657-5 and the guidebook of the Wildlife Board for taking big game.

(c) The variance request must be presented by the landowner association to the appropriate local Regional Wildlife Advisory Council. The local Regional Wildlife Advisory Council shall forward a recommendation to the Wildlife Board for consideration and action.

(7)(a) Any person who is issued a limited entry landowner permit must follow the season dates, weapon restrictions and any other regulations governing the taking of big game as specified in Rule R657-5 and the guidebook of the Wildlife Board for taking big game.

(b) to receive a limited entry landowner permit, the person designated on the voucher must possess or obtain a Utah hunting or combination license.

(8) A limited entry landowner permit authorizes the permittee to hunt within the limited entry unit where the eligible property is located.

(9) Nothing in this rule shall be construed to allow any person, including a landowner, to take more than one buck deer, one bull elk or one buck pronghorn during any one year.

#### **R657-43-9. Limited Entry Permit Allocation and Fees**

(1) Upon approval of the Wildlife Board, the division shall issue vouchers to landowner associations that may be used to purchase limited entry permits from division offices.

(2) The fee for any limited entry landowner permit is the same as the cost of similar limited entry buck deer, bull elk or buck pronghorn limited entry permits.

#### **R657-43-10. Limited Entry Permit Conflict Resolution.**

(1)(a) If landowners representing a simple majority of the private land within a landowner association are not able to resolve any dispute or conflict arising from the distribution of permits or other disagreement within its discretion and arising from the operation of the landowner association, the permits allocated to the landowner association shall be made available to the general public by the division.



(b) Landowner associations may be eligible to receive landowner permits in subsequent years if the landowner association resolves the conflict or dispute by a simple majority of the landowners.

(2) The division shall not issue landowner permits to a landowner association that has not complied with the provisions of this rule.

**KEY: wildlife, landowner permits, big game seasons**

**Date of Enactment or Last Substantive Change: January 10, 2012**

**Notice of Continuation: March 05, 2012**

**Authorizing, and Implemented or Interpreted Law: 23-14-18; 23-14-19**



GARY R. HERBERT  
Governor

SPENCER R COX  
Lieutenant Governor

# State of Utah

## DEPARTMENT OF NATURAL RESOURCES

MICHAEL R. STYLER  
Executive Director

### Division of Wildlife Resources

GREGORY SHEEHAN  
Division Director

## MEMORANDUM

Date: October 24, 2013

To: Wildlife Board and Regional Advisory Council Members

From: Greg Hansen, Assistant Attorney General (Wildlife Resources)

**Subject: Utah Hunter Mentoring Program, Utah Administrative Rule R657-67**

---

Enclosed for your review is a new administrative rule establishing Utah's Hunter Mentoring Program, R657-67, that will be presented at the November Regional Advisory Council Meetings and the December 5 meeting of the Wildlife Board. This rule was drafted in response to changes in Utah Code that allowed for the sharing of hunting permits by family members and their children, and between good Samaritans and children with terminal illnesses. The goal of the program is to create a process where family members can expose children to hunting and provide instruction on hunting methods and ethics, with the goal of increasing youth recruitment into the sport.

Some highlights of the program are:

1. Permits are shared not transferred, meaning both the mentor and the participating minor can carry a firearm in the field. However, only one animal may be taken per permit.
2. The program is applicable to all big game permits.
3. The mentor may not receive any form of compensation for participating in the program.
4. To qualify for the program, a minor must be a Utah Resident between the ages of 12 and 17, possess a Utah Hunter's Education number, and either be the child, stepchild, grandchild, or legal ward of the mentor or be suffering from a life threatening medical condition.
5. The mentor may be either a resident or a nonresident, but must be at least 21 years of age and must be able to legally possess a firearm.
6. There is an administrative process established in rule to track permit sharing.

Thank you – I look forward to meeting with you soon.



**R657. Natural Resources, Wildlife Resources.**

**R657-67. Utah Hunter Mentoring Program.**

**R657-67-1. Purpose and Authority.**

Under the authority of Utah Code Annotated Sections 23-14-1, 23-14-3, 23-14-18, 23-14-19, and 23-19-1, this rule creates a hunting mentor program that will increase hunting opportunities for Utah families and provides the procedures under which a minor child may share the permit of another to take big game, including all big game general season permits, big game limited entry permits, once-in-a-lifetime permits, big game Cooperative Wildlife Management Unit permits, and all antlerless big game permits.

**R657-67-2. Definitions.**

(1) Terms used in this rule are defined in Section 23-13-2 and this Subsection.

(2) "Hunting Mentor" means a Resident or Nonresident individual possessing a valid permit issued by the Division to take a big game animal in Utah and who is 21 years of age or older when the big game animal is taken.

(3) "Qualifying Minor" means a Utah Resident who is under 18 when engaged in a hunting related activity, and

(i) is the child, stepchild, grandchild, or legal ward of the Hunting Mentor; or

(ii) is suffering from a life threatening medical condition.

**R657-67-3. Requirements for Sharing Permits.**

(1) A Hunting Mentor may lawfully share a permit with a Qualifying Minor, and a Qualifying Minor may lawfully take big game authorized by the Hunting Mentor's permit, if the following conditions are satisfied:

(a) The Qualifying Minor is at least 12 years of age when hunting;

(b) The Qualifying Minor has successfully completed a Hunter's Education Program recognized by the Division and possesses a Utah Hunter's Education number;

(c) The Hunting Mentor receives prior written approval by the Division authorizing the sharing of the permit;

(d) The Hunting Mentor receives no form of compensation or remuneration for sharing the permit with the Qualifying Minor;

(e) The Hunting Mentor accompanies the Qualifying Minor while hunting at a distance where the Hunting Mentor can communicate with the Qualifying Minor by voice or hand signals;

(f) The Hunting Mentor provides advice, assistance, and mentoring on sportsman ethics, techniques, and safety to the Qualifying Minor; and

(g) Both the Hunting Mentor and the Qualifying Minor otherwise comply with all laws, rules, and regulations governing the taking of big game as authorized by the permit.

(2) A Qualifying Minor does not need to possess a valid hunting or combination license to participate in the mentor program.

**R657-67-4. Administrative Process for Sharing Permits.**

(1) The Hunting Mentor shall submit a complete application for participation in the mentor program at least 10 business days before the requested effective date.

(2) A complete application for the mentor program includes the following:

(a) A handling fee as established by the Utah Legislature;

(b) The Permit Number that is to be shared;

- (c) A physically identifying description of the Qualifying Minor;
- (d) The Qualifying Minor's hunter education number; and
- (e) Written certification(s) of the following:
  - (i) That the Qualifying Minor is the child, stepchild, grandchild, or legal ward of the Hunting Mentor; or
  - (ii) That the Qualifying Minor has a life threatening medical condition; and
  - (iii) If the Hunting Mentor is not the Qualifying Minor's parent or legal guardian, the Hunting Mentor must also certify that they have received written authorization from the Qualifying Minor's parent or legal guardian approving their participation in the hunting activity.
- (3) A Hunting Mentor may only share their permit with one Qualifying Minor at a time.
- (4) If a Hunting Mentor wishes to change the Qualifying Minor with whom they share their permit, they must:
  - (a) Surrender the authorization issued to the Qualifying Minor by the Division;
  - (b) Reapply with the Division to have a new Qualifying Minor participate in the mentor program in the same manner as described in this Section.

**R657-67-5. Sharing the Permit in the Field.**

- (1) While in the field, the Hunting Mentor must possess the following:
  - (a) All written certifications submitted to the Division for the Qualifying Minor's participation in the mentor program;
  - (b) If the Hunting Mentor is not the Qualifying Minor's parent or legal guardian, the Hunting Mentor must also certify that they have received written authorization from the Qualifying Minor's parent or legal guardian approving their participation in the hunting activity;
  - (c) The authorization issued by the Division allowing the Qualifying Minor to share in the use of the Hunting Mentor's permit; and
  - (d) The hunting license or combination license of the Hunting Mentor.
- (2) Both the Qualifying Minor and the Hunting Mentor may carry a legal weapon in the field if they have satisfied the requirements to participate in the Mentoring Program.
- (3) Big game taken by a Qualifying Minor shall be tagged with the Hunting Mentor's permit in the same manner as if the Hunting Mentor was the individual taking the animal.
- (4) Only one big game animal may be taken under a shared permit, and the issuance of written authorization to share the permit does not confer additional rights to take big game.

**R657-67-6. Variances, Surrenders, Refunds, Special Accommodations, and Administrative Details.**

- (1) All variances, permit surrenders, refunds, and accommodations for people with disabilities shall be based on the type of permit that is shared and the individual using the wildlife document.
- (2) All bonus points, preference points, and waiting periods shall be assessed to the Hunting Mentor.

**KEY:** wildlife, game laws, hunter education

**Date of Enactment or Last Substantive Amendment:** New Rule

**Notice of Continuation:** New Rule

**Authorizing, and Implementing or Interpreted Law:** 23-14-1, 23-14-3, 23-14-18, 23-14-19, and 23-19-1



**GARY R. HERBERT**  
Governor

**SPENCER R COX**  
Lieutenant Governor

# State of Utah

## DEPARTMENT OF NATURAL RESOURCES

**MICHAEL R. STYLER**  
Executive Director

### Division of Wildlife Resources

**GREGORY SHEEHAN**  
Division Director

October 24, 2013

**TO:** Utah Wildlife Board / Regional Advisory Council Members  
**FROM:** Bryan Christensen  
Volunteer Services/Dedicated Hunter Program Coordinator  
**SUBJECT:** 2014 Dedicated Hunter Program Recommendations (Rule R657-38)

Several aspects of the Dedicated Hunter Program were adjusted in 2011 to be in harmony with the unit-based deer hunting structure that began in 2012. As with any change, it is not uncommon to encounter some aspects that need updating. The recommended changes to R657-38 simplify and clarify the program as outlined in the administrative rule. This recommendation will also address one of the Wildlife Board's action items set in June 2013 regarding service hours.

#### Recommendations for this rule:

- Remove outdated wording that is specific to 2012
- Simplify sentence structure and eliminate redundancy
- Reorganize the sequence of sections
- Remove unnecessary dates (specifically permit printing and permit return dates)
- Clarify portions that were incomplete or in conflict with other parts of the rule
- Allow a Dedicated Hunter that has finished the 3<sup>rd</sup> year, but still has incomplete service hours, to be allowed to pay for, or provide service to complete them
- Change a COR expiration from Dec. 31 to the final day of the general deer season
- Incorporates the new definition of "youth"
- Define when a surrendered COR merits a reinstatement of a preference point
- Clarify the options for a participant that also is offered a poaching reported reward permit
- Adjust the annual service hour requirement distribution

The following is a general summary of DWR findings relative to the Wildlife Board's action item requesting the "DWR to reconsider allowing Dedicated Hunter Program applicants to accrue volunteer hours in the first year after they apply in the program rather than waiting until the final selections and approval."

Applicants to the Dedicated Hunter Program are notified on approximately May 31 whether they have drawn a place in the program or not. With the archery deer season beginning mid-August, these new participants are currently given 10 weeks to complete 8 hours of required service.

In 2013, there were 2,427 new participants—resulting in a need for enough projects for 19,416 service hours to be completed within those 10 weeks. Compounding that demand, the 2<sup>nd</sup> and 3<sup>rd</sup> year participants also tend to work on their hours during that timeframe. The DWR successfully provided sufficient service opportunities to accommodate the demand for hours.



Page 2  
October 24, 2013  
Subject:

At the request of the Wildlife Board, the DWR explored the possibility of expanding the timeframe in which service hours are accepted in order to give the 1<sup>st</sup> year Dedicated Hunter additional time to perform service beyond 10 weeks. The DWR was able to develop several options in which service hours could be performed outside an enrollment period and perhaps stored into a 'banking' type of system. Unfortunately, each option generated a variety of less desirable consequences and could not assure that the changes would be utilized or would truly benefit participants and the DWR.

However, through this exploration, the DWR did identify a simple and feasible solution. Currently, Dedicated Hunters are required to complete 8 hours of service to receive their permits in the 1<sup>st</sup> year, 16 additional hours in the 2<sup>nd</sup> year, and 8 additional hours in the 3<sup>rd</sup> year. We are proposing that the rule be amended to allow a 1<sup>st</sup> year permit to be obtained with 0 hours the 1<sup>st</sup> year, 16 hours the 2<sup>nd</sup> year, and 16 additional hours in the 3<sup>rd</sup> year.

We firmly believe that this approach will assist the 1<sup>st</sup> year Dedicated Hunter, by allowing more time to complete first service hours, will make more participants available for important springtime projects, and will maintain consistency with the program philosophies and goals.



## **R657. Natural Resources, Wildlife Resources.**

### **R657-38. Dedicated Hunter Program.**

#### **R657-38-1. Purpose and Authority.**

(1) Under the authority of Section 23-14-18, this rule provides the standards and requirements for qualified deer hunters to participate in the Dedicated Hunter Program by obtaining a certificate of registration.

(2) The Dedicated Hunter Program is a program that provides~~[the opportunity for participants to]~~:

(a) ~~[increase the opportunity for recreational general deer hunting, while the division regulates harvest;]~~expanded hunting opportunities

(b) ~~[increase participation in wildlife conservation]~~opportunities to participate in projects that are beneficial to wildlife~~[conservation and the division]~~; and

(c) ~~[complete the wildlife conservation and ethics course to learn about]~~education in hunter ethics~~[, public input processes]~~ and wildlife ~~[conservation philosophies and strategies]~~management principles.

#### **R657-38-2. Definitions.**

(1) Terms used in this rule are defined in Section 23-13-2.

(2) In addition:

~~(a) "Dedicated Hunter Program orientation course" means a course of instruction provided by the division outlining the organization, structure and requirements of the Dedicated Hunter Program. [(b)]~~ "Dedicated Hunter Permit" means a general buck deer permit issued to a participant in the Dedicated Hunter Program, which authorizes the participant to hunt deer during the general archery, general muzzleloader and general any weapon open seasons in the ~~[unit]~~hunt area specified on the permit.

~~[(c)]~~ "Hunt area" means an area prescribed by the Wildlife Board where general archery, general muzzleloader and general any weapon deer hunting is open to permit holders for taking deer.

~~[(d)]~~ "Participant" means a person who has remitted the appropriate fee and has been issued a Dedicated Hunter certificate of registration~~[for]~~.

~~(d)~~ "Program" means the Dedicated Hunter Program~~[.]~~

~~(e)~~ "Program"~~[means the Dedicated Hunter Program, a program administered by the division as provided in this rule.][(f)]~~ "Program" harvest" means ~~[tagging a deer with]~~using a Dedicated Hunter permit to tag a harvested deer or failing to return ~~[the]~~a Dedicated Hunter permit with~~[the]~~ attached~~[, unused]~~ kill tag, while enrolled in the program.

~~[(g)]~~ ~~["Program requirements" mean the Dedicated Hunter Program orientation course as provided in Section R657-38-9, the wildlife conservation and ethics course as provided in Section R657-38-10, wildlife conservation projects as provided in Section R657-38-11, and returning an unused Dedicated Hunter permit and attached tag as provided in Subsection R657-38-13(1).]~~

~~(h)~~ ~~"Wildlife Conservation and Ethics course" means a course of instruction provided by the division on hunter ethics, public input processes and wildlife~~

conservation philosophies and strategies.][~~(i) "Wildlife conservation project" means a project designed by the division, or any other individual or entity and pre-approved by the division,~~]"Wildlife conservation project" means any project that provides wildlife habitat protection or enhancement, improves hunting or fishing access, [~~or other conservation projects or activities that benefit wildlife~~]or directly benefits [~~the division,~~]"wildlife or the Division's current needs and is pre-authorized by the Division.

[~~(j) "Wildlife conservation project manager" means an employee of the division, or person approved by the division, responsible for supervising a wildlife conservation project and participating volunteers, and maintaining and reporting records of service hours to the division.~~]

**R657-38-3. [~~Certificate~~]Dedicated Hunter Certificates of Registration[ ~~Required.~~]**

(1)(a) To [~~participate~~]become a participant in the program a person must apply for, obtain, and sign a Dedicated Hunter certificate of registration[ ~~issued by the division through the Big Game Application as prescribed in the guidebook of the Wildlife Board for taking big game~~]. A participant is not required to have the Dedicated Hunter certificate of registration on their person while hunting.

(b)[~~Each unit may not exceed the specified percentage of~~]Certificates of registration are issued by the Division through a drawing as prescribed in the guidebook of the Wildlife Board for taking big game and R657-62.

(c) Certificates of registration are valid for 3 consecutive years, except as provided by R657-38-(10), beginning on the date the big game drawing results are released and ending on the last day of the general season hunt for the 3<sup>rd</sup> year of enrollment.

(d) The number of Dedicated Hunter certificates of registration [for the program at any given time. The percentages shall be prescribed by the Wildlife Board in the guidebook for taking big game.]is limited to 15% of the total annual general season quota for each perspective hunt area.

(~~e~~)i) Certificates of registration [are issued through a division]remaining unissued from the Dedicated Hunter portion of the big game drawing shall be redistributed as general single-season permits for their respective hunt areas in the general buck deer drawing.

[~~(d) Each prospective participant must submit an online application provided by the division after completing the Dedicated Hunter Program orientation course before the division may issue the certificate of registration for the program.~~]

[~~(e) A certificate of registration to participate in the program shall only be issued during the application period as prescribed in the guidebook of the Wildlife Board for taking big game.~~]

(2) The [~~division~~]Division may deny[ ~~issuing~~], suspend, or revoke a Dedicated Hunter certificate of registration[ ~~to a person~~] for any of the following reasons:

(a) The drawing application[ ~~is incomplete or~~] contains false information[-];

(b) The person, at the time of application, or during the program enrollment, is under a judicial or administrative order suspending any wildlife hunting or fishing privilege within Utah or elsewhere;

(c) The person has violated the terms of any certificate of registration issued by the ~~[division]~~Division or an associated agreement.

~~[(d)3] [The person has ever had a Dedicated Hunter certificate of registration suspended by the division.][(3) Prospective participants who have been]~~ A person under any wildlife suspension may not apply for ~~[the program]~~a certificate of registration until their suspension period has ended.

~~(4) [Each certificate of registration is valid for three consecutive general deer hunting seasons, except as provided in subsections (13) and (14).]~~

~~[(5)(a) Any person who is 12 years of age or older may obtain a certificate of registration. A person 11 years of age may obtain a certificate of registration if the date of that person's 12th birthday falls in the calendar year the certificate of registration is issued. A person may not use a permit to hunt big game before their 12th birthday.]~~

~~[(b) Any person who is 17 years of age or younger before the beginning date of the annual general archery deer hunt shall pay the youth participant fees.]~~

~~[(c) Any person who is 18 years of age or older on or before the beginning date of the annual general archery deer hunt shall pay the adult participant fees.][(6)–]~~ A certificate of registration authorizes the participant ~~[an opportunity to receive annually]~~to use a Dedicated Hunter permit to hunt deer within the area listed on the permit, during the general archery, general muzzleloader and general any legal weapon buck deer hunts~~[-The Dedicated Hunter permit may be used during]~~ according to the dates and ~~[within the hunt area]~~ boundaries established by the Wildlife Board. When available, the certificate of registration may also authorize hunting within the general archery extended area during the extended season dates.

~~[(7)(a) Except as provided in Subsections (b), R657-38-12(3)(a), and R657-38-12(6), a participant using a Dedicated Hunter permit may take two deer within three years of enrollment, and only one deer in any one year as provided in Rule R657-5.]~~

~~[(b) Participants entering or re-entering the Dedicated Hunter Program shall be subject to any changes subsequently made in this rule during the three-year term of enrollment, unless a variance is authorized by the division.]~~

~~[(c) The harvest of an antlerless deer using a Dedicated Hunter permit, as authorized under specific hunt choice areas during the general archery deer hunt, shall be considered a program harvest.]~~

~~[(8) The certificate of registration must be signed by the participant. The certificate of registration is not valid without the required signature.]~~

~~[(9) The participant and holder of the certificate of registration must have a valid Dedicated Hunter permit in possession while hunting. A participant is not required to have the Dedicated Hunter certificate of registration in possession while hunting.]~~

~~[(10) The division may issue a duplicate Dedicated Hunter certificate of registration pursuant to Section 23-19-10.]~~

~~[(11) Certificates of registration are not transferable and shall expire at the end of a participant's third consecutive general deer hunting season.]~~

~~[(12)(a) The program requirements set forth in Sections R657-38-10, and R657-38-11 may be waived annually if the participant provides evidence of leaving the state for a minimum period of one year during the enrollment period for religious or educational purposes.]~~

~~[(b) If the participant requests that the program requirements be waived in accordance with Subsection (a), and the request is granted, the participant shall not receive a Dedicated Hunter permit for the year in which the program requirements were waived.]~~

~~[(13)(a) A participant who is a member of the United States Armed Forces or public health or public safety organization and who is mobilized or deployed on order in the interest of national defense or emergency may request that their enrollment in the program be suspended for the period of their mobilization or deployment.]~~

~~[(14)(a) A participant who is a member of the United States Armed Forces or public health or public safety organization and who is mobilized or deployed on order in the interest of national defense or emergency may request that the requirements set forth in Sections R657-38-10, R657-38-11, be extended or satisfied as provided in Subsections (b) through (d).]~~

~~[(b) The program requirement set forth in Section R657-38-10 may be extended to the second or third year of their program enrollment.]~~

~~[(i) extended to the third year in the program if the participant is currently in the second year of the program; and]~~

~~[(ii) waived in the third year of the program if the participant remains mobilized or deployed and is unable to reasonably meet the requirement.]~~

~~[(c) The program requirement set forth in Section R657-38-11 may be considered satisfied by a participant that is prevented from completing the requirement due to the mobilization or deployment.]~~

~~[(d) A participant must provide evidence of the mobilization or deployment.]~~

~~[(15) A refund for the Dedicated Hunter certificate of registration may not be issued, except as provided in Section 23-19-38.2. Any refund will be issued pro rata based on the number of hunting seasons actually participated in during the three-year enrollment period.]~~

(5) The participant's hunt area, issued through the drawing, shall remain the same for the duration of that program enrollment period.

(6) Participants of the program shall be subject to any changes subsequently made in this rule during the term of enrollment, unless a variance is authorized by the Division.

#### **R657-38-4. [~~Dedicated Hunter Drawing~~]Applications for Certificates of Registration.**

~~(1) [Applications are available through the division's Internet site.]~~

~~(2) A person may not submit more than one application in the Dedicated Hunter drawing in any one year.]~~

~~[(3)(a) Applications must be submitted online by the date prescribed in the guidebook of the Wildlife Board for taking big game.]~~

~~[(b) If an error is found on an application, the applicant may be contacted for correction.]~~

~~[(4) Only a resident may apply for or obtain a resident certificate of registration and only a nonresident may apply for or obtain a nonresident certificate of registration.]~~

~~[(5) To apply for a resident certificate of registration, a person must establish residency at the time of purchase.]~~

~~[(6) The posting date of the drawing shall be considered the purchase date of a certificate of registration.]~~

~~[(7) Applicants shall be notified by email of drawing results by the date published in the guidebook of the Wildlife Board for taking big game.]~~

~~[(8) Group applications are accepted. Up to four applicants may apply as a group.]~~

~~[(9)(a) An applicant may withdraw their application for the Dedicated Hunter Program drawing by the date published in the guidebook of the Wildlife Board for taking big game.]~~

~~[(b) Handling fees will not be refunded.]~~

~~[(10) An applicant may withdraw and resubmit their application for the Dedicated Hunter Program certificate of registration drawing by the date published in the guidebook of the Wildlife Board for taking big game.]~~

~~[—(11)(a) Effective January 1, 2012 all current Dedicated Hunter Program participants must select a general season hunting unit prior to the Big Game application period as established by the Wildlife Board in the guidebook for taking big game.]~~

~~[—(b) Any current Dedicated Hunter Program participant who fails to select a general season hunting unit prior to the Big Game application period as established by the Wildlife Board in the guidebook for taking big game will be assigned a unit in the participants region of choice from the previous year.]~~

~~[—(i) The division shall make every reasonable attempt to contact each current Dedicated Hunter Program participant for the purpose of selecting a general season hunting unit.]~~

#### **~~[R657-38-5. Dedicated Hunter Application Fees.]~~**

~~[The handling fees and certificate of registration fees must be paid pursuant to Rule R657-42-8(5).]~~

#### **~~[R657-38-6. Dedicated Hunter Application Refunds.]~~**

~~[(1) The handling fees are nonrefundable.]~~

~~[(2) Unsuccessful applicants will not be charged for a certificate of registration.]~~  
[Application to obtain a Dedicated Hunter certificate of registration is pursuant to R657-62-16

(a) Applicants must meet all age requirements and proof of hunter education and license requirements pursuant to Sections 23-19-11, 23-19-22, 23-19-24, and 23-19-26.

(i) Any person who is 12 years of age or older may apply for a Dedicated Hunter certificate of registration.

(ii) A person 11 years of age may apply for or obtain a Dedicated Hunter certificate of registration if that person's 12<sup>th</sup> birthday falls in the calendar year the certificate is issued. A person may not hunt big game prior to their 12<sup>th</sup> birthday.

**R657-38-~~[7.]~~(5). Dedicated Hunter Preference Point System.**

~~[(1) Preference points are used in the Dedicated Hunter certificate of registration drawing to ensure that applicants who are unsuccessful in the drawing will have first preference in the next year's drawing.]~~

(1) Dedicated Hunter Preference points are issued pursuant to R657-62-10.

**R657-38-6. Fees.**

(1) Any person who is 17 years of age or younger on July 31<sup>st</sup> of the application year shall pay the youth participant fees.

~~(2)[A preference point is awarded for:]~~

~~[(a) each valid unsuccessful application;]~~

~~[(b) each valid application when applying only for a preference point in the dedicated hunter drawing.]~~

Any person who is 18 years of age or older on July 31<sup>st</sup> of the application year shall pay the adult participant fees.

~~(3)[(a) A person may not apply in the drawing for both a preference point and a certificate of registration.]~~

~~[(b) A person may not apply for a preference point if that person is ineligible to apply for a certificate of registration.]~~ Lifetime License holders shall pay a reduced fee as authorized by the annual fee schedule.

~~(4) [Preference points are forfeited if a person obtains a certificate of registration]~~ A participant who enters the program as a Utah resident and becomes a nonresident, shall be changed to a nonresident status and may be issued a nonresident permit at no additional charge for the remainder of the three-year enrollment period.  
~~[through the drawing.]~~

~~[(5)(a) Preference points are not transferable.]~~

~~[(b) Preference points shall only be applied to the Dedicated Hunter drawing.]~~

~~[(c) A person may accumulate preference points.]~~

~~[(6) Preference points are averaged and rounded down to the nearest whole point when two or more applicants apply together on a group application.]~~

~~[(7)(a) Preference points are tracked using social security numbers or division-issued customer identification numbers.]~~

~~[(b) The division shall retain copies of electronic applications from 2011 to the current applicable drawing for the purpose of researching preference point records.]~~

~~[(c) Any requests for researching an applicant's preference point records must be requested within the time frames provided in Subsection (b).]~~

~~[(d) Any preference points on the division's records shall not be researched beyond the time frames provided in Subsection (b).]~~



~~[(e) The division may eliminate any preference points earned that are obtained by fraud, deceit or misrepresentation.]~~

**~~[R657-38-8. Dedicated Hunter Permits.]~~**

~~[(1)(a) Participants may hunt during the general archery, general muzzleloader and general any weapon deer hunts within the hunt area and during the season dates prescribed in the guidebook of the Wildlife Board for taking big game.]~~

~~[(b) The division may exclude multiple season opportunities on specific deer management units due to extenuating circumstances on that specific unit.]~~

~~[(2)(a) Participants must designate a unit hunt choice during the Dedicated Hunter application period.]~~

~~[(b) The unit hunt choice shall remain in effect for the duration of the Dedicated Hunter certificate of registration.]~~

~~[(3)(a) Participants must notify the division of any change of mailing address in order to receive a Dedicated Hunter permit by mail.]~~

~~[(b) A participant who enters the program as a resident and becomes a nonresident, or claims residency outside of Utah shall be issued a nonresident permit at no additional charge for the remainder of the three-year enrollment period.]~~

~~[(e)5] A participant who enters the program as a nonresident and becomes a Utah resident~~[, or claims residency in Utah], shall be changed to a resident status and may be issued a resident permit with no reimbursement of the higher nonresident fee for the remainder of the three-year enrollment period.

~~[(4)(a) Dedicated Hunter permits may be issued through the mail prior to the beginning of the general archery deer hunt, and only upon evidence that the participant has completed all program requirements and possesses a Utah hunting or combination license. For the purposes of meeting the requirement of 23-19-24(2) the application period for a Dedicated Hunter deer permit will be considered to be the application period for the big game permits. Any Dedicated Hunter who does not have a valid hunting license during this application period must obtain one before a Dedicated Hunter deer permit will be issued.]~~

~~[(b) Participants completing program requirements may obtain their Dedicated Hunter permit over the counter from any division office after the remaining general season deer permits become available to the public as listed in the guidebook of the Wildlife Board for taking big game.]~~

~~[(5) A Dedicated Hunter permit may not be issued to any participant who:]~~

~~[(a) does not complete the program requirements;]~~

~~[(b) violates the terms of this rule or the Dedicated Hunter certificate of registration;]~~

~~[(c) does not possess a current and or valid Utah hunting or combination license.]~~

~~[(6)(a) The division may issue a duplicate Dedicated Hunter permit pursuant to Section 23-19-10.]~~

~~[(b) If a participant's unused Dedicated Hunter permit and tag is destroyed, lost, or stolen a participant may complete an affidavit verifying the permit was destroyed, lost, or stolen in order to obtain a duplicate. A fee to duplicate the permit and tag may apply.]~~

~~[(c) A duplicate Dedicated Hunter permit shall not be issued after the closing date of the general any weapon buck deer hunt. However, a participant may complete an affidavit and submit the affidavit for program reporting purposes as required in Section R657-38-13(1).]~~

~~[(7)(a) A participant may surrender a Dedicated Hunter permit in accordance with Rule R657-42.]~~

~~[(b) A participant may not surrender a Dedicated Hunter permit once the general archery deer hunt has begun, unless the Division can verify that the permit was never in the participant's possession.]~~

~~[(8)(a) Lifetime license holders may participate in the program.——]~~

~~[(b) The lifetime license holder agrees to forego any rights to receive a lifetime license buck deer permit for the general archery, general muzzleloader or general any weapon deer hunts as provided in Section 23-19-17.5.]~~

~~[(c) A refund or credit is not issued for the lifetime license general archery, general muzzleloader or general any weapon permit.]~~

#### **R657-38-~~9.~~ Dedicated Hunter Program Orientation Course.]**

~~[(1)(a) The division shall provide an annual Dedicated Hunter Program orientation course.]~~

~~[(b) Prior to applying for the program, and obtaining a certificate of registration, a prospective participant must complete the Dedicated Hunter Program orientation course.]~~

~~[(2) The Dedicated Hunter Program orientation course shall explain the program to give a prospective participant a reasonable understanding of the program.]~~

~~[(3) The Dedicated Hunter Program orientation course is available through the division's Internet site.]~~

~~[(4)(a) Evidence of completion of the Dedicated Hunter Program orientation course shall be provided to the prospective participant upon completion of the Dedicated Hunter Program orientation course.]~~

~~[(b) Certificates of registration shall not be issued without the prospective participant having completed the Dedicated Hunter Program orientation course.]~~

~~[(c) The division shall keep a record of all participants who complete the Dedicated Hunter Program orientation course.]~~**7. Refunds.**

(1) A refund for the Dedicated Hunter certificate of registration may not be issued, except as provided in Section 23-19-38.2 and R657-42.

(2) Any eligible refund will be issued pro rata, based on the number of years in which any portion of a hunt was participated in during the enrollment period.

(3) Drawing application fees are nonrefundable.

#### **R657-38-10. R657-38-8. Wildlife Conservation and Ethics Course[.] Requirement**

(1) Prior to obtaining the first Dedicated Hunter permit [~~while in~~of] the program, a participant must complete the wildlife conservation and ethics course.

~~(2) The wildlife conservation and ethics course shall explain hunter ethics, public input processes, and wildlife conservation philosophies and strategies.~~ [(3)] The wildlife conservation and ethics course is available through the [division]Division's Internet site.

[(4)]3) The [division]Division shall keep a record of all participants who complete the wildlife conservation and ethics course.

#### **R657-38-~~11. Wildlife Conservation Projects.~~9. Service Hour Requirement**

~~(1) Each~~ a) Except as provided in R657-38-14, each participant in the program shall provide a [total]minimum of 32 hours of service as a volunteer on ~~a wildlife conservation project as provided in Subsections (a) and (b), or pay the approved fee for each hour not completed as provided in Subsection (c)~~ Division approved wildlife conservation projects.

~~[(a) A participant must provide no fewer than eight hours of service before obtaining the first Dedicated Hunter Permit.]~~

~~[(b) A participant must provide an additional sixteen hours of service prior to receiving the second Dedicated Hunter Permit.]~~

~~[(c) A participant must provide the remaining balance of hours of service prior to November 1 of the third year in the program.]~~

~~[(d) If a participant fails to complete all third year required service hours by November 1 after having been issued permits in years one and two, the value of the final hours must be paid in full prior to applying in any division drawings.]~~ i) A participant may obtain a permit in the 1<sup>st</sup> year of the program without having provided service hours.

(ii) A participant must have completed a minimum of 16 service hours prior to receiving a Dedicated Hunter permit in the 2<sup>nd</sup> year of the program.

(iii) A participant must have completed a minimum of 16 additional service hours prior to receiving a Dedicated Hunter permit in the 3<sup>rd</sup> year of the program.

(b) If the participant fails to have the minimum of 32 hours completed at the expiration of the 3<sup>rd</sup> year, the participant will be ineligible to apply for or obtain any permits until the remaining hours have been paid for or completed.

(i) After a certificate of registration has expired, incomplete service hours may be completed through Division approved wildlife conservation projects or by payment at the hour buyout rate.

~~[(e)]c) Residents may not purchase more than 24 of the 32 total required service hours. Nonresidents may purchase all of the 32 total required service hours.~~

~~[(f) Goods or services may be provided to the division in lieu of hours of service.]~~

(d) If a participant fails to fulfill the wildlife conservation project requirements in any year of participation, the participant shall not be issued a Dedicated Hunter permit for that year.

(2) Wildlife conservation projects may be designed by the Division, or any other individual or entity, but must be pre-approved by the Division.

~~[(g)]a) Goods or services provided to the [division]Division for wildlife conservation projects by a participant may be, at the discretion of the [division]Division, substituted~~

for service hours based upon current market values for the goods or services, and using the approved hourly service buyout rate when applying the credit.

~~[(2) Wildlife conservation projects shall be designed by the division, or any other individual or entity and shall be pre-approved by the division.]~~

~~[(3)(a) Wildlife conservation projects may occur anytime during the year as determined by the division.]~~

(i) Goods or material donations that are specifically requested and accepted by the Division may be considered as service project hours.

(b) The ~~[division]~~Division shall publicize the dates, times, locations and description of approved wildlife conservation projects and activities on the ~~[division]~~Division's Internet site.

~~[(4)(a) Service hours completed in any given year may be carried over to the following years, however excess service hours shall not be carried over to any year outside of the three-year enrollment period.]~~

~~[(b) Dedicated Hunter permits issued to participants within three weeks prior to the opening date of the general archery deer hunt annually, shall be issued over the counter at division offices.]~~

~~[(5) A participant may request a receipt from the wildlife conservation project manager showing service hours worked on the wildlife conservation project.]~~

~~[(6)(a) If a participant fails to fulfill the wildlife conservation project requirement in any year of participation, as required under Subsection (4), the participant shall not be issued a Dedicated Hunter permit for that year.]~~

(3) Service hours must be completed within the enrollment period.

(a) Service hours exceeding the 32 hour minimum shall not be applicable beyond the enrollment period and shall not be applied to subsequent certificate of registrations.

(4) Participants are required to perform their own service hours.

(a) Service hours are not transferrable to other participants or certificates of registration.

#### **R657-38-10. Service Hour Exceptions and Program Extension.**

(1) The program service hour requirements may be waived on an annual basis if;

(a) The participant provides evidence of leaving the state for a minimum period of one year during the enrollment period for religious or educational purposes.

(i) If the participant requests that the program service hour requirements be waived, and the request is granted, the participant shall not receive a Dedicated Hunter permit for the year in which the program requirements were waived

(b) The participant is a member of the United States Armed Forces or public health or public safety organization and is mobilized or deployed on order in the interest of national defense or emergency

(2) A person who is a member of the United States Armed Forces or public safety organization that is mobilized or deployed may request;

(a) That the remainder of their program enrollment period be postponed until return from their period of mobilization or deployment;

~~(b) [The participant may obtain a Dedicated Hunter Permit for subsequent years upon completion of the wildlife conservation project program requirements due or payment of the fee in lieu thereof.]~~That the program requirements be postponed into a subsequent year of the enrollment

~~(7) The Volunteer Service Program Coordinator shall keep a record of all participants who attend wildlife conservation projects and the number of service hours worked.]~~c) That the program service hour requirements be waived if the participant is prevented from completing the requirements due to the mobilization or deployment.

(A) The participant must provide evidence of the mobilization or deployment period.

(B) The Division shall determine a pro rata schedule in which the service hour requirements waived correlate with the term length of the deployment or mobilization.

### **R657-38-11. Allowable Harvest and Permit Return Requirements.**

(1)(a) Except as provided in section R657-38-12, a program participant may take up to 2 deer within the enrollment period and only 1 deer may be harvested in a single year.

(b) The harvest of an antlerless deer using a Dedicated Hunter permit, when permissible in the extended archery areas and seasons established in the big game guidebook, shall be considered a program harvest.

(2) Upon issue of a Dedicated Hunter permit, the participant is credited with a program harvest.

(a) 2 program harvests are allowed within the enrollment

(b) If program harvests are accrued during the 1<sup>st</sup> year and 2<sup>nd</sup> year of the enrollment, a permit shall not be issued for the 3<sup>rd</sup> year.

(c) In order to remove a program harvest credit, the participant:

(i) must not have harvested a deer with the Dedicated Hunter permit, and

(ii) must return the permit and attached tag, or a qualifying affidavit for duplication as proof of non-harvest to a Division office. A handling fee may be assessed for processing an affidavit.

### **R657-38-12. Dedicated Hunter Permits.**

(1) Pursuant to Sections 23-19-24 and 23-19-26 person must have a valid Utah hunting or combination license to be issued a big game permit.

(2) The participant must have a valid Dedicated Hunter permit in possession while hunting.

(3) Upon completion of the minimum annual requirements, a Dedicated Hunter permit may be issued. The method and dates in which the Division issues and distributes Dedicated Hunter permits shall be published on the Division's website or in the guidebook of the Wildlife Board for taking big game.

(4) The Division may exclude multiple season opportunities on specific management units due to extenuating circumstances on a portion or all of a hunt area.

(5)(a) The Division may issue a duplicate Dedicated Hunter permit pursuant to Section 23-19-10.

(b) If a participant's unused Dedicated Hunter permit and tag is destroyed, lost, or stolen prior to, or during the hunting season in which the permit is valid, a participant may obtain a duplicate. A handling fee may be assessed for the duplication.

(c) A duplicate Dedicated Hunter permit shall not be issued after the closing date of the general buck deer season.

(6)(a) A participant may surrender a Dedicated Hunter permit in accordance with Rule R657-42.

(b) A participant may not surrender a Dedicated Hunter permit once the general archery deer hunt has begun, unless the Division can verify that the permit was never in the participant's possession.

(7)(a) Lifetime license holders may participate in the program.

(b) The Lifetime license holder shall apply for a certificate of registration in the same manner as all other prospective participants.

(c) Upon joining and for the duration of enrollment in the program, the lifetime license holder agrees to temporarily forego any rights to receive a lifetime license buck deer permit as provided in Section 23-19-17.5.

(c) A refund or credit is not issued for a forgone lifetime license permit.

### **R657-38-13. Obtaining Other Permits.**

(1) Participants may not apply for or obtain any general season buck deer permit, including general landowner buck deer permits, or respective preference points issued by the [division]Division through the big game drawing, license agents, over-the-counter sales, or the [Internet]internet during [the three-year period of]an enrollment period in the program.

(a) Any general season deer permit obtained [in addition to the Dedicated Hunter permit becomes]is invalid and must be surrendered prior to the beginning date of [the general archery deer hunt]that permit. A refund may not be issued pursuant to Section 23-19-[38]3.

(2)(a) Participants may [not]apply for or obtain [general landowner buck deer permits as provided under Rule R657-43.]a limited entry season buck deer permit, including CWMU, limited entry landowner, conservation, convention, and poaching rewards permits

[ (3)(a) Participants may apply for or obtain any other non-general season buck deer permit as provided in Rule R657-5 and the guidebook of the Wildlife Board for taking big game.]

(i) [harvest of a]The limited entry buck deer [with a permit obtained pursuant to Subsection (a) shall not be considered a program harvest.]permit may be obtained without the completion of the annual program requirements, but does not exempt the participant from fulfilling the minimum requirements of the entire enrollment.

(ii) Obtaining a limited entry buck deer permit during the enrollment shall not extend the enrollment period, but shall take the place of one of the 3 possible permit years.



~~(ii) participants are not required to complete program requirements prior to obtaining a permit pursuant to Subsection (a).~~ iii) Harvest with a limited entry buck deer permit shall not be counted as a program harvest.

(b) If the participant obtains ~~[any other]~~ a limited entry buck deer permit~~;~~ and has been issued a Dedicated Hunter permit, that permit or the Dedicated Hunter permit ~~[becomes invalid and the participant must surrender the Dedicated Hunter permit prior to the opening day of the general archery deer hunt.]~~ must be surrendered as permissible by R657-38-11 and R657-42. A refund may not be issued pursuant to Section 23-19-38.

~~(c)i) [If the]~~ A participant who obtains ~~[any other]~~ a limited entry buck deer permit ~~[the participant]~~ may only use ~~[the]~~ that permit~~[-only]~~ in the prescribed area ~~[during the]~~ and season~~[-dates]~~ listed on the permit. Dedicated Hunter privileges are not transferred to that permit.

~~(d) Participants who obtain a cooperative wildlife management unit deer permit may hunt only within those areas identified on the permit and only during the dates determined by the cooperative wildlife management unit landowner or operator.]~~

~~[(4) Participants must have a valid permit in their possession while hunting.]~~

~~[(5) Obtaining any other buck deer permit does not authorize a participant to take an additional deer.]~~

~~[(6)(a) Participants may apply for or obtain antlerless deer permits as provided in Rule R657-5 and the guidebook of the Wildlife Board for taking big game.]~~

~~[(b) Antlerless permits do not count against the number of permits issued pursuant to this program.]~~

~~[(c) Harvest of an antlerless deer as provided in the guidebook of the Wildlife Board for taking big game shall not be considered a program harvest.]~~

### **[R657-38-13. Reporting Requirements.]**

~~[(1)(a) A participant must return the unused Dedicated Hunter permit and attached tag, or an affidavit as provided in Section R657-38-8(6)(c), to a division office by March 15 annually.]~~

~~[(b) The division shall credit a program harvest to any participant who fails to return the unused Dedicated Hunter permit and attached tag, or an affidavit as provided in Section R657-38-8(6)(c).]~~ ii) The limited entry buck deer permit may not be obtained if the Dedicated Hunter permit has been in possession of the participant during any open portion of the general buck deer season.

~~[(i) An unused Dedicated Hunter permit and attached tag, or an affidavit as provided in Subsection R657-38-8(6)(c) will be accepted and the credited program harvest removed.]~~ 3)(a) Participants may apply for or obtain antlerless deer permits as provided in Rule R657-5 and the guidebook of the Wildlife Board for taking big game.

~~[(ii) A participant who returns an unused Dedicated Hunter permit after March 15, and who is credited with a second program harvest, is only eligible to obtain a Dedicated Hunter permit for an available unit if permits remain after the big game~~

~~drawing and must obtain the Dedicated Hunter permit over the counter at a division office.]~~

~~[(iii) If there are no permits remaining after the big game drawing, additional Dedicated Hunter permits shall not be issued.]~~

~~[(2)(a) The division may contact participants to gather annual harvest information and hunting activity information.]~~

~~[(b) Participants are expected to provide harvest information and hunting activity information if contacted by the division.]~~

(b) Except as provided in R657-38-10, harvest of an antlerless deer with an antlerless deer permit shall not be considered a program harvest.

#### **R657-38-14. Certificate of Registration Surrender.**

(1) A participant ~~[who has obtained]~~may surrender a Dedicated Hunter certificate of registration ~~[may surrender the certificate of registration to a division office]~~pursuant to R657-42-4 provided the participant ~~[does not have two program harvests and the participant has not been issued a permit in years one and two.]~~has not been issued 2 Dedicated Hunter permits in which hunting may have occurred.

(a) if a participant has been issued the 1st permit, the participant must have completed a minimum of 10 service hours prior to an allowable surrender.

(i) if the participant surrendering is physically unable to complete the minimum of 10 service hours due to injury or illness, the Division may authorize another person to fulfill the requirement in the participant's behalf.

(b) a participant may not surrender a certificate of registration if the participant has met the program harvest limit.

(2) The ~~[division]~~Division may not issue a refund, except as provided in Section 23-19-38 and ~~[Section R657-38-3(15).]~~R657-42 and R657-38-7.

(3) If a Dedicated Hunter permit has been issued in which hunting may have occurred, the participant shall not be eligible for preference points to be reinstated upon surrender of the certificate of registration.

#### **R657-38-15. Certificate of Registration Suspension.**

(1) The ~~[division]~~Division may suspend a Dedicated Hunter certificate of registration pursuant to Section 23-19-9 and R657-26.

(2) A certificate of registration may also be suspended if the participant~~[~~fraudulently]:

(a) fraudulently submits a time sheet for service hours; or

(b) fraudulently completes ~~[a wildlife conservation and ethics course]~~any of the program requirements.

~~[(3) A certificate of registration may be suspended if the participant is under a judicial or administrative]~~c) is under suspension ~~[order suspending]~~of any~~[-wildlife]~~ hunting or fishing ~~[privilege within Utah or elsewhere.]~~[(4) A certificate of registration is invalid if the participant's big game hunting]privileges ~~[are suspended]~~in any jurisdiction during the participant's enrollment in the program.

(~~5~~3) A Dedicated Hunter permit is invalid if a participant's certificate of registration is suspended.

(4) The program enrollment period shall not be extended in correlation with any suspension.

**KEY: wildlife, hunting, recreation, wildlife conservation**

**Date of Enactment or Last Substantive Amendment: January 10, 2012**

**Notice of Continuation: November 1, 2010**

**Authorizing, and Implemented or Interpreted Law: 23-14-18**

**BIGHORN SHEEP UNIT MANAGEMENT PLAN  
UNIT # 21 OAK CREEK**

**I. BOUNDARY DESCRIPTION**

**Millard and Juab Counties** - Boundary begins at Holden (Exit 178); north on I-15 to exit 207 and Mills road, west on this road to the Sevier River; north along this river to SR-132; west on SR-132 to US-6; south on US-6 to US-6/50; east on US-6/50 to Holden; east on this road to I-15.

**II. CURRENT STATUS**

The Oak Creek Wildlife Management Unit is located east of Scipio and west of Delta (Figure 1). It is proposed to transplant Rocky Mountain Bighorn Sheep into the unit in an effort to reestablish sheep to their native ranges (Buechner 1960, Dalton and Spillet 1971) and promote wildlife diversity in the area for hunting and viewing. This plan will guide future management decisions consistent with the Utah Statewide Bighorn Sheep Management Plan.

Bighorn sheep habitat is located throughout the long steep rocky canyons, hillsides and windblown ridges. In 2012, the Clay Springs Fire burned over 100,000 acres resulting in substantially improved bighorn sheep habitat. This unit has been considered for bighorn sheep reestablishment prior to the fire; however there was concern about areas that had become dominated by old growth pinyon and juniper forests, which reduced value to bighorn. The Clay Springs Fire now provides expanded opportunities to reestablish sheep onto the unit. Aggressive habitat restoration efforts to restore existing old growth areas will further improve bighorn sheep habitat.

Potential habitat, recommended release sites, and nearest domestic sheep allotments are depicted on a map in Figure 2.

**III. LAND OWNERSHIP**

<b>LAND OWNERSHIP</b>	<b>AREA (Acres)</b>	<b>PERCENT OWNERSHIP</b>
Bureau of Land Management	566,033	43.2%
Private	507,074	38.7%
Forest Service	115,616	8.8%
Utah State Institutional Trust Lands	114,972	8.8%
Utah Division of Wildlife Resources	7,486	0.5%
Native American Trust Lands	222	< 0.01%
UT Department of Transportation	55	< 0.01%
<b>TOTALS</b>	<b>1,311,458</b>	<b>100%</b>

## **IV. ISSUES AND CONCERNS**

### **A. Disease**

Parasites and disease are a major concern for bighorn sheep management in Utah. The effects of disease in bighorn sheep populations are widely documented throughout the literature. Management of and response to potential and existing disease outbreaks will be guided through UDWR policy and procedures as well as WAFWA guidelines.

The presence and proximity of domestic sheep operations must be carefully evaluated and the risk of disease transmission assessed for each release area and as bighorn sheep establish throughout the unit. There are currently two domestic sheep grazing allotments that are within close proximity to the Oak Creek bighorn sheep unit:

#### **Adjacent Domestic Sheep Grazing Allotments**

The Gilson Allotment: The BLM allotment is located to the far north of the range. The Gilson allotment is approximately 4 miles north of the potential bighorn habitat. AUMs for the unit are 1100 and it is grazed from 11/1-5/3.

The Shearing Allotment: The BLM allotment is located to the north of the range. The Shearing allotment is about 7 miles north of the potential bighorn habitat. AUMs for the unit are 4300 and it is grazed from 4/15-4/30.

Permittees have been contacted about translocation plans and discussed that any wild sheep on allotment property will be handled per UDWR policy. Permittees also agree to maintain domestic sheep on their allotment and handle wandering sheep per allotment policy.

### **B. Predation**

Predation can be a serious limiting factor to herd establishment or expansion. In some locations predators have had a profound negative effect on the success of bighorn sheep transplants. In most areas of Utah, mountain lions are the most significant predator of bighorn sheep. Additional predators on bighorn include coyotes, bobcats, and eagles.

A predator management plan is currently in place for this subunit for mule deer. Currently, the hunting strategy for lions appears to have been effective as pressure from hunters appears to be constant and lion harvest has been consistent. The Fillmore Oak Creek is a split unit with Limited Entry and Harvest Objective Tags. Over the last three years the average amount of cougars killed per year is 3. The current permit/quota for lions on the unit is 8.

If lion predation is shown to have adverse impacts on bighorn sheep establishment, lion management will be accomplished through established UDWR policy and procedures.

### **C. Human Disturbance**

Human disturbance can result in abandonment or degradation of bighorn habitat. Due to the rugged nature and lack of roads near sheep habitat, human disturbance of bighorn on this unit is expected to be low. If disturbance becomes an issue, UDWR will work with and support federal agencies (BLM, USFS) on travel management plans and other land use plans. Furthermore, the public will be made aware through town council and other local meetings in an effort to get local support to reduce human disturbance to bighorn sheep.

### **D. Loss of Habitat**

Loss of habitat to development or natural succession can result in habitat fragmentation and can limit opportunities for herd establishment and expansion. Habitat on this subunit has recently been enhanced through natural burning and mechanical removal of thick brush in the canyon bottoms and encroaching pinion juniper and/or conifer on the hillsides. In 2012, the Clay Springs fire burned over 100,000 acres on the Oak Creek mountain range (Figure 3). This expanded bighorn sheep habitat by opening dense areas with years of overgrowth. After the fire, wildlife agencies collaborated to reseed the area and produce a seed mixture beneficial to wild sheep and other ungulates. Further disturbance to this area is not expected and will likely have minimal impact on transplanted bighorn sheep.

### **E. Poaching**

Poaching can have a detrimental effect on recreational viewing and hunting opportunities. Currently, the UDWR and local law enforcement agencies work together to eliminate any illegal activity on the Oak Creek mountain range. Oak Creek is managed as a limited entry deer unit with substantial viewing opportunity. Due to this increased exposure, most law enforcement agencies are aware of the poaching potential on this unit and spend significant time patrolling the area.

### **G. Competition with Other Big Game Species**

The presence of other big game species such as elk and mule deer, particularly on wintering or lambing areas will be a consideration in the evaluation of potential reintroduction sites. The potential for social, spatial and/or forage competition and the possibility of interspecific disease transmission will also be carefully evaluated. Currently, there has been little documented competition between bighorn and other big game species in other areas in the state. The most likely area of possible competition will be on windblown ridges if bighorn sheep choose to winter on the same ridges and at the same elevation as elk.

### **H. Impacts to Private Lands and Public Lands Grazing Permits**

Bighorn sheep habitat on the Oak Creek mountain falls between the agricultural communities of Oak City and Mills. Depredation caused by bighorn in these areas will be handled per UDWR OIAL depredation policy. Reports of wild sheep outside unit boundaries and/or within the area of concern should be documented in the wild sheep and domestic sheep and goat interaction UDWR database and handled in accordance with the Guidelines for Preventing and Handling



Co-mingling of Wild Sheep with Domestic Sheep and Goats (DWR GLN-33). This guideline states that if suspected or likely bighorn sheep contact with domestic sheep and goats has occurred, the wild sheep should be lethally removed. Carcass removal and disposal will be at the discretion of the regional supervisor or designee. If no possible contact could have occurred, and if capture is feasible; the wild sheep should be captured tagged, have blood samples taken and returned to the population. If that same animal strays outside the area of concern a second time, the regional supervisor or designee can authorize the lethal removal of the wild sheep.

### **I. Coordination of initial transplants with land management agencies, grazing permittees, private landowners, and local governments.**

All interested parties have been notified and given opportunity for discussion. This includes the Millard County Commission, USFS, BLM, City Council and grazing permittee holders. Reception to the idea has been favorable and supportive. UDWR will maintain working relationships with all interested parties and invite them to participate in bighorn sheep related activities..

### **J. Potential Bighorn Sheep Habitat**

Potential bighorn sheep habitat has been evaluated on a local and landscape level. Suitable habitat is located on the northern end of the range where the landscape is more open. Slope and vegetation is adequate for bighorn on the southern end of the mountain range. With more habitat projects this has the ability to become optimal bighorn habitat.

## **V. UNIT MANAGEMENT GOALS AND OBJECTIVES.**

### **A. Population Management Goal: Establish an optimum population of bighorn sheep, composed of various sub-populations in all suitable habitat.**

**Objective 1:** Establish a viable bighorn sheep population in the Fool Creek Canyon area. The population objective for the unit will be to manage for up to 300 bighorn sheep within suitable habitat across the unit. If conditions exist where disease concerns or other issues are evident, this number may be reduced to ensure population viability. Population objectives were determined based on a density of 1.3-1.9 sheep/km<sup>2</sup> (Van Dyke 1983).

#### **Strategies:**

- 1) Transplant wild bighorn sheep to establish a genetically viable herd. Initial transplants will likely occur with 40-60 sheep, all of which will be radio collared. Monitoring of radio collars will follow UDWR guidelines.
- 2) Monitor population size and composition using statewide survey protocols
- 3) Utilize population or sight-ability models to determine the relationship between surveys and population size.
- 4) Monitor herds periodically for disease consistent with UDWR policy and procedures

- 5) Participate in research efforts to find solutions if disease problems and low lamb survival becomes an issue.
- 6) Implement the predator management plan consistent with UDWR policy and procedures for sheep units.
- 7) Support law enforcement efforts to reduce illegal taking of bighorn sheep.

**B. Habitat Management Goal: Provide good quality habitat for a healthy population of bighorn sheep.**

**Objective 1:** Maintain or improve sufficient bighorn sheep habitat to achieve population objectives.

**Strategies:**

- 1) Continue to identify crucial bighorn sheep habitats and work with land managers and private landowners to protect these areas.
- 2) Assist land management agencies in monitoring bighorn habitat to detect changes in habitat quantity or quality.
- 3) Work with land managers to minimize and mitigate loss of bighorn habitat due to human disturbance and development.
- 4) Inform and educate the public concerning the needs of bighorn sheep including the effects of human disturbance and the need for habitat improvements.
- 5) Work with land management agencies and private landowners to implement agency guidelines for management of domestic sheep and goats in bighorn areas.
- 6) Support conservation groups efforts to pursue conversions of domestic sheep grazing allotments by working with willing permittees in bighorn areas to minimize the risk of disease transmission.
- 7) Initiate vegetative treatment projects to improve bighorn habitat lost to natural succession or human impacts. Continue with post burn efforts of reseedling.
- 8) Cooperate with the USFS and BLM to utilize controlled burns and/or mechanical treatments to remove conifer encroachment on open hillsides to increase and improve bighorn habitat across the subunit.
- 9) Work with USFS, the BLM and private landowners to locate and improve water sources across bighorn habitat. Cooperatively modify or

improve existing water developments and guzzlers for bighorns. Install new water developments or guzzlers in bighorn habitat where water may be lacking.

10) Identify specific habitat restoration projects to immediately benefit bighorn sheep:

Areas around Williams peak, Bullhog.  
Blue mountain bullhog and reseed.  
Eight mile canyon burn and reseed.

**C. Recreation Goal: Provide high quality opportunities for hunting and viewing of bighorn sheep.**

**Objective 1:** Provide hunting opportunities when subpopulations have established.

**Strategies:**

1) Recommend hunting when it is determined that the population on the unit is capable of harvest. This will be evaluated through surveys on total population numbers, lamb production, and mature rams available for harvest.

2) Recommend permit numbers based on 12-15% of the counted ram population (yearling and older) or 30-40% of the counted rams 6 years of age or older.

3) Recommend hunting seasons to provide maximum recreational opportunity while not imposing on DWR management needs.

4) Maintain high hunter success rates on all units.

**Objective 2:** Increase public awareness and expand viewing opportunities of bighorn sheep.

**Strategies:**

1) Install interpretive signs in bighorn sheep areas for public information.

2) Continue to expand bighorn sheep viewing events for interested publics. Recreational use and demand for hunting and viewing of bighorn sheep is high and increasing. Significant viewing opportunities will likely be created in Fool Creek Canyon and both the south to Wild Horse Peak and north to Williams's peak.

## LITERATURE CITED

Buechner, H. K. 1960. The Bighorn Sheep in the United States, Its Past, Present, and Future. Wildlife Monographs:3-174.

Dalton, L.B., and J.J. Spillett. 1971. The bighorn sheep in Utah: past and present. 1<sup>st</sup> North American Wild Sheep Conference 1:32-53

Van Dyke, W. A., A. Sands, J. Yoakum, A. Polenz, and J. Blaisdell. 1983. Wildlife habitat in managed rangelands – the Great Basin of southeastern Oregon: bighorn sheep. U.S. Forest Service General Technical Report PNW-159, Pacific Northwest Forest and Range Experiment Station, Portland, Oregon, USA.

Figure 1. Oak Creek Wildlife Management Unit # 21, Utah.

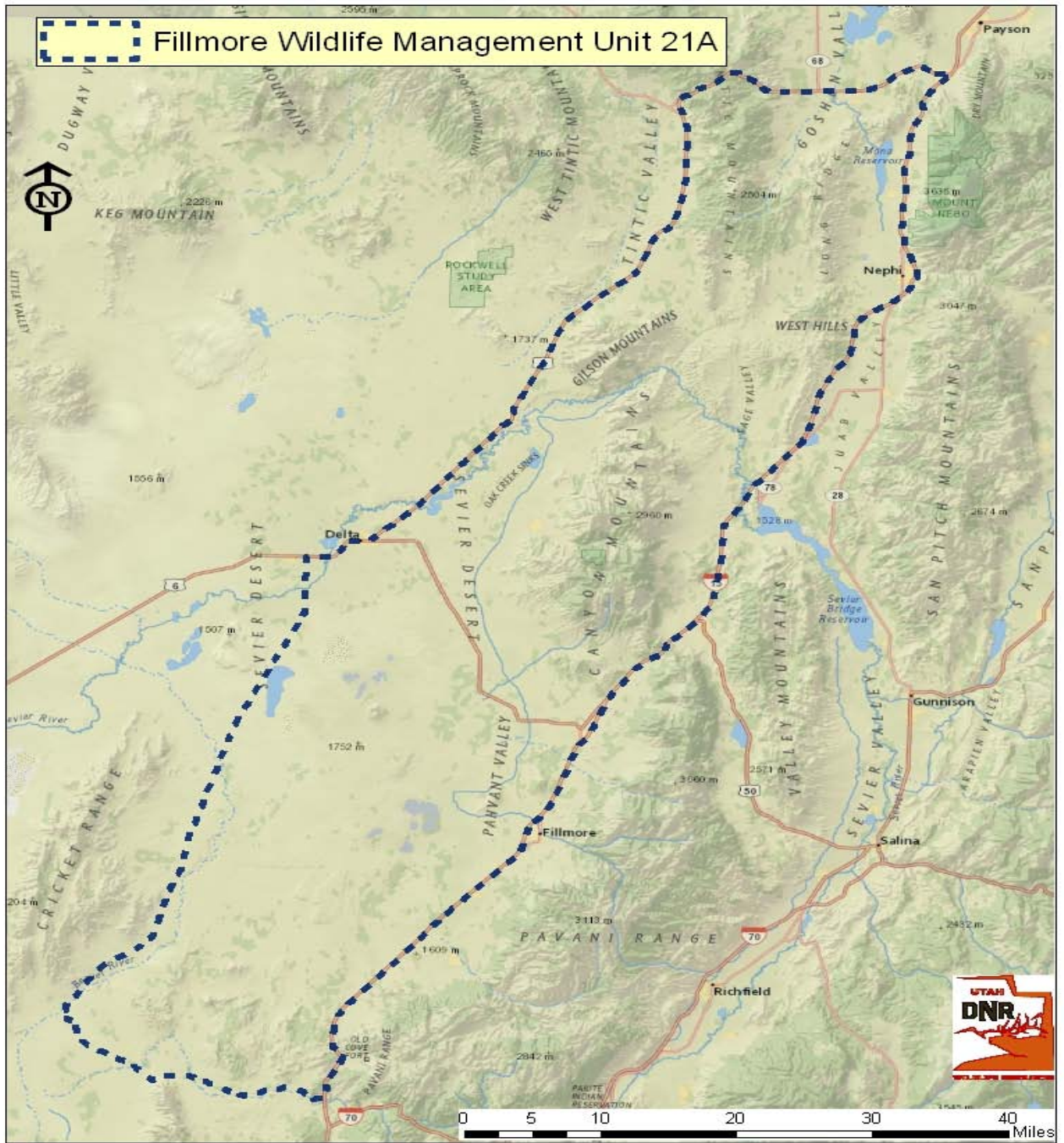




Figure 2. Potential bighorn sheep habitat, recommended release sites, and nearest domestic sheep allotments on the Oak Creek WMU #21, Utah. The red boundary depicts suitable bighorn sheep habitat, green depicts current domestic sheep allotments, and yellow depicts highway 132.

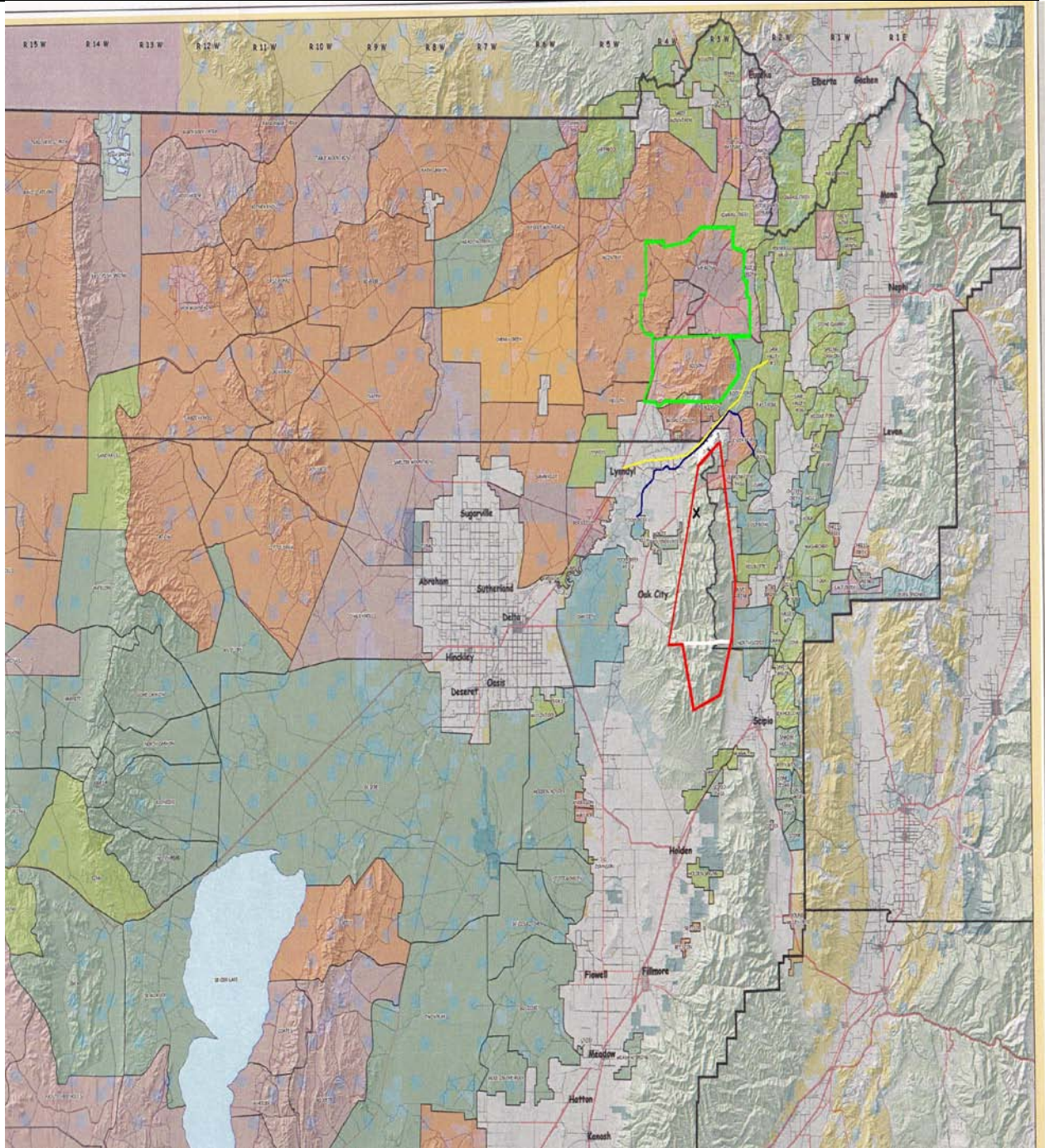




Figure 3. 2012 Clay Springs Fire on the Oak Creek WMU #21, Utah.

