

RAC AGENDA – November 2023

Revised Oct. 31, 2023



- | | |
|--|----------------------|
| 1. Welcome, RAC Introductions and RAC Procedure - RAC Chair | |
| 2. Approval of Agenda and Minutes - RAC Chair | ACTION |
| 3. Wildlife Board Meeting Update - RAC Chair | INFORMATIONAL |
| 4. Regional Update - DWR Regional Supervisor | INFORMATIONAL |
| 5. Harvest Survey Amendments – R657-5 - Kent Hersey, Big Game Projects Coordinator | ACTION |
| 6. Pronghorn Augmentation Sites - Kent Hersey, Big Game Projects Coordinator | ACTION |
| 7. Hunt Structure/Research Proposal - Kent Hersey, Big Game Projects Coordinator | ACTION |
| 8. Emerging Technologies – Muzzleloader and Archery Amendments - Blair Stringham, Wildlife Migration Initiative Coordinator | ACTION |
| 9. Dedicated Hunter Program Amendments - Bryan Christensen, Dedicated Hunter Coordinator | ACTION |
| 10. LOA Rule Amendments - Chad Wilson, Public Wildlife/Private Lands Coordinator | ACTION |
| 11. LOA Permit Recommendations - Chad Wilson, Public Wildlife/Private Lands Coordinator | ACTION |
| 12. CWMU Permit Recommendations - Chad Wilson, Public Wildlife/Private Lands Coordinator | ACTION |

Meeting Locations

NR RAC – Nov. 8th 6:00 PM
Weber County Commission Chambers
2380 Washington Blvd. Suite #240, Ogden
<https://youtube.com/live/VvRxrCLKWP8>

SER RAC – Nov. 15th 6:00 PM
John Wesley Powell Museum
1765 E. Main St., Green River
<https://youtube.com/live/yT-bGyilres>

CR RAC – Thursday Nov. 9th 6:00 PM
Wildlife Resource Conference Room
1115 N. Main Street, Springville
<https://youtube.com/live/15kz35fYeGU>

NER RAC – Nov. 16th 6:00 PM **Location Change**
Uintah Conference Center/Paradise Room
313 E. 200 S., Vernal
<https://youtube.com/live/pW9qxQdUGp8>

SR RAC – Nov. 14th 6:00 PM
Southern Utah University,
Hunter Conf. Center, Charles R Hunter Room
https://youtube.com/live/ckzEbd1fu_Q

Board Meeting – Tuesday, November 28th 9:00 AM
Eccles Wildlife Education Center, Farmington Bay
https://youtube.com/live/h_sBblEgSto



SPENCER J. COX
Governor

DEIDRE M. HENDERSON
Lieutenant Governor

State of Utah

DEPARTMENT OF NATURAL RESOURCES

JOEL FERRY
Executive Director

Division of Wildlife Resources

J. SHIRLEY
Division Director

MEMORANDUM

TO: Utah Wildlife Board / Regional Advisory Councils

FROM: Kent Hersey, Big Game Projects Coordinator

DATE: October 20, 2023

SUBJECT: R657-5, Taking Big Game rule amendments related to mandatory harvest reporting for general-season deer and elk hunters.

The Utah Division of Wildlife Resources is recommending changes to R657-5 and R657-42 to maintain quality harvest data.

Below is a summary of the recommended changes to R657-5:

1. Mandatory harvest reporting for general-season deer and elk hunters
 - a. Require harvest reporting within 30 days after the season ends for hunters with permits for general-season buck deer and general-season spike bull or any bull elk. These hunts would include all general-season buck deer permits, Dedicated Hunter buck deer permits, youth buck deer permits, all spike bull elk permits, multi-season spike bull elk permits, all any bull elk permits, general-season archery elk permits and general-season youth elk permits.
 - b. Hunters who fail to submit their buck deer or bull elk big game harvest reports within the 30 days would be ineligible to apply in the big game and antlerless applications the following year.
 - c. To reinstate their hunt drawing eligibility, permit holders must pay a fee and file their harvest reports.

Below is a summary of the recommended changes to R657-42:

1. Update the Assessment of Late Fees (R657-42-9) section to include ineligibility to apply for big game and antlerless permits, or preference points, the following year for any person who fails to report their general-season antlerless big game, buck deer or bull elk hunt information within 30 days after the season ends, pursuant to R657-5.

We are recommending implementing these changes over a two-year period. Beginning in 2024, we recommend making harvest reporting mandatory for general-season deer and elk hunters, and will require them to complete a harvest report prior to being eligible to apply in the big game and antlerless applications the following year. As a transitional measure, we recommend waiving the late fee for general-season deer and elk hunters in 2024. However, beginning in 2025 we recommend requiring the completion of a harvest report — and the incurrence of a \$50 late fee for reports filed after the 30-day reporting period — to be eligible to apply in the big game and antlerless applications the following year.

For additional details, please see the redline version of proposed rule changes included in the RAC packet.

R657. Natural Resources, Wildlife Resources.

R657-5. Taking Big Game.

R657-5-1. Purpose and Authority.

- (1) Under authority of Sections 23A-2-304 and 23A-2-305, the Wildlife Board has established:
- (a) this rule for taking deer, elk, pronghorn, moose, bison, bighorn sheep, and Rocky Mountain goat.
 - (b) appropriate weapons or devices to take big game and restrictions to weapons or devices to take big game.
- (2) Specific dates, areas, methods of take, requirements, and other administrative details which may change annually are published in the guidebook of the Wildlife Board for taking big game.

R657-5-52. Harvest Reporting

- (1)(a) A person who has obtained any big game or antlerless permit, including but not limited to CWMU, conservation, LOA and expo permits must report hunt information by filling out the harvest survey on the division's website within 30 calendar days after the end of the season date listed on the permit, whether the permit holder was successful or unsuccessful in harvesting.
- (b) The following types of big game permits must report hunt information by filling out the harvest survey designated on a division's webpage within 30 calendar days after the end of the extended archery season:
- (i) general season buck deer archery;
 - (ii) youth general season buck deer any legal weapon;
 - (iii) dedicated hunter;
 - (iv) general season bull elk archery;
 - (v) youth general season bull elk; and
 - (vi) multi-season spike bull elk.
- (c) A harvest survey will not be required for mitigation permits or mitigation vouchers issued under Rule R657-44.
- (d) Permit holders must report hunt information by filling out the harvest survey on the division's website or by contacting the division office by telephone.
- (e) A person who fails to comply with the requirement in Subsection (a) shall be ineligible to apply for any big game species permits and bonus or preference points in either the big game application or antlerless application the following year.
- (f) Late questionnaires may be accepted pursuant to Subsection R657-42-9(2).

KEY: wildlife, game laws, big game seasons

Date of Last Change: [~~October 1,~~]2023

Notice of Continuation: September 8, 2020

Authorizing, and Implemented or Interpreted Law: 23A-2-304; 23A-2-305; 23A-11-201; 23A-11-202

R657. Natural Resources, Wildlife Resources.

R657-42. Fees, Exchanges, Surrenders, Refunds, and Reallocation of Wildlife Documents.

R657-42-1. Purpose and Authority.

(1) Under the authority of Sections 23A-4-201 and 23A-4-207 the division may issue wildlife documents in accordance with the rules of the Wildlife Board.

(2) This rule provides the standards and procedures for the:

- (a) exchange of permits;
- (b) surrender of wildlife documents;
- (c) refund of wildlife documents;
- (d) reallocation of permits; and
- (e) assessment of late fees.

R657-42-9. Assessment of Late Fees.

(1) Any wildlife application submitted under the Utah Administrative Code Rules provided in Subsection (a) through (e), within 30 days of the applicable application deadline established in such rules, in the guidebooks of the Wildlife Board, or by the division may be processed only upon payment of a late fee as provided by the approved fee schedule.

- (a) Rule R657-52, Commercial Harvesting of Brine Shrimp and Brine Shrimp Eggs;
- (b) Rule R657-21, Cooperative Wildlife Management Units for Small Game;
- (c) Rule R657-22, Commercial Hunting Areas;
- (d) Rule R657-37, Cooperative Wildlife Management Units for Big Game; or
- (e) Rule R657-43, Landowner Permits.

(2) Any person who fails to report their Big Game hunt information pursuant to Rule R657-5 [~~Taking Big Game, within 30 calendar days of the ending season date for their once-in-a-lifetime, premium limited entry, limited entry, or cooperative wildlife management unit hunt may~~ may reinstate their eligibility to apply for a Big Game or antlerless permit~~-or-~~, bonus point~~-ia-~~, or preference point the following year provided:

(a) the survey is completed and submitted to the division prior to the close of the [~~Big Game~~]relevant application period established in the guidebook~~[-of the Wildlife Board for taking big game]~~.

(b) [~~the late fee established in the approved fee schedule is~~]appropriate fees are paid to the [~~Division-~~]division: and

(c) The accepted method~~[-of]~~ payment [~~of fee~~]method is [~~only a~~]done via credit or debit card.

(3) Any person who fails to report their Swan hunt information pursuant to Section R657-9-7, within 30 calendar days of the ending season date for their Swan hunt may apply for a Swan permit in the following year provided:

(a) the survey is completed and submitted to the division prior to the close of the Swan application period established in the guidebook of the Wildlife Board for taking waterfowl.

(b) the late fee established in the approved fee schedule is paid to the Division.

(c) The accepted method of payment of fee is only a credit or debit card.

KEY: wildlife, permits

Date of Last Change: October 1, 2023

Notice of Continuation: March 15, 2023

Authorizing, and Implemented or Interpreted Law: 23A-4-201; 23A-4-207; 23A-4-301



SPENCER J. COX
Governor

DEIDRE M. HENDERSON
Lieutenant Governor

State of Utah

DEPARTMENT OF NATURAL RESOURCES

JOEL FERRY
Executive Director

Division of Wildlife Resources

J. SHIRLEY
Division Director

MEMORANDUM

TO: Utah Wildlife Board / Regional Advisory Councils

FROM: Kent Hersey, Big Game Projects Coordinator

DATE: October 20, 2023

SUBJECT: Pronghorn augmentation sites

The current Utah Pronghorn Statewide Management Plan was approved by the Utah Wildlife Board in fall 2017. Since the approval of that plan, extreme winter conditions and severe droughts have caused unanticipated declines in several pronghorn populations across Utah. As such, we recommend amending Table 4 in the statewide management plan to include the following augmentation sites in addition to the transplant sites already included in the plan:

- 1) Antelope Island — Beacon Knob, Frary Homesite, Garden Creek, South of Fielding Garr Ranch
- 2) Box Elder
 - a. Promontory — East Side Locomotive Springs Road, Monument Point
 - b. Snowville — Matlin Mountain, Peplin Mountain
 - c. West — Pilot Mountain
- 3) Cache, North Rich — Crawford Mountain, Rabbit Creek, South Fork Six Mile Creek, Upper Otter Creek, Woodruff Coop
- 4) Mt. Dutton/Paunsaugunt — East Bench, Hatch Bench, Johns Valley
- 5) Panguitch Lake — Bower Flat, Little Sandy Flats, Little Valleys, Sage Hen Hollow
- 6) Parker Mountain — Smooth Knoll
- 7) San Rafael, Desert — Antelope Valley (Emery County), Antelope Valley (Wayne County), Flat Tops area, Robbers Roost, Twin Corral Flats
- 8) Southwest Desert — Antelope Valley, Cricket Mountain, Escalante Desert, Hamlin Valley, Pine Valley, Wah Wah Valley



SPENCER J. COX
Governor

DEIDRE M. HENDERSON
Lieutenant Governor

State of Utah

DEPARTMENT OF NATURAL RESOURCES

JOEL FERRY
Executive Director

Division of Wildlife Resources

J. SHIRLEY
Division Director

MEMORANDUM

TO: Utah Wildlife Board / Regional Advisory Councils

FROM: Kent Hersey, Big Game Projects Coordinator

DATE: October 20, 2023

SUBJECT: Deer Hunt Strategies Research Proposal

In response to public feedback, the Utah Division of Wildlife Resources recommends implementing a research study on various general-season deer hunting units in southern Utah. The purpose of the study is to determine if hunt restrictions based on antler points, weapon technology and/or season length can improve mule deer population performance, hunting opportunity or hunter satisfaction in Utah. A summary of the research proposal is below. The full research proposal is attached.

- 1) We recommend implementing hunt restrictions on the following units:
 - a) Four points or more (on at least one side) antler restrictions on the Pine Valley unit.
 - b) Shortened general-season dates on the Beaver and Southwest Desert units.
 - i) Two-week archery hunt, beginning the first Saturday in September.
 - ii) Five-day muzzleloader hunt, maintaining the current Wednesday opening day.
 - iii) Five-day any legal weapon hunt, maintaining the current Saturday opening day.
 - c) Restricted weapons on the Mt Dutton unit.
 - i) Weapons restrictions will be based on the recently passed definitions.
 - d) All three of the above strategies on the Boulder/Kaiparowits unit.
 - e) Reference units (no treatments/strategies) on the Monroe and Zion units.
- 2) We recommend setting permit numbers on each of the units based on the four-year average of permit numbers from 2020 to 2023. We also recommend maintaining permit numbers on the units at these values for the entire study, unless the buck-to-doe ratio falls below 15 or rises above 24. For those situations, we recommend allowing the DWR director to adjust permits by up to 20% annually in an attempt to maintain stable buck-to-doe ratios.
- 3) We recommend implementing this study for four hunting seasons (2024-2027) to allow sufficient data to assess both the effects on the deer populations and the social acceptance or disapproval of these strategies.

General-season buck deer permit treatment and control units recommendations

| Unit | Treatment type | Four-year average permits |
|---------------------|---|----------------------------------|
| Pine Valley | Four points or more antler point restrictions | 3,150 |
| Beaver | Shortened seasons | 1,475 |
| Southwest Desert | Shortened seasons | 525 |
| Mt Dutton | Restricted weapons | 325 |
| Boulder/Kaiparowits | Combined, all treatments | 1,125 |
| Monroe | Reference, no treatment | 750 |
| Zion | Reference, no treatment | 2,900 |



SPENCER J. COX
Governor

DEIDRE M. HENDERSON
Lieutenant Governor

State of Utah

DEPARTMENT OF NATURAL RESOURCES

JOEL FERRY
Executive Director

Division of Wildlife Resources

J. SHIRLEY
Division Director

Hunting Strategies for Buck Mule Deer in Utah: A Research Proposal Investigating Antler Point Restrictions, Shortened Season Dates and Restricted Weapons

Introduction

Mule deer are of great importance to people who live and hunt in Utah. Both deer hunters in Utah and the Utah Division of Wildlife Resources (DWR) are passionate about mule deer and want productive mule deer populations that offer ample and diverse opportunities for hunting. The DWR manages mule deer populations as a sustainable resource and for the use and benefit of all Utahns. Management recommendations for mule deer are designed to accomplish the goals and objectives outlined in the [Utah Mule Deer Statewide Management Plan](#), and the recommendations for this study are formulated according to the strategies outlined in that plan.

The DWR listens to hunters and is open to feedback and direction. Hunters regularly provide feedback, ask questions and share concerns about mule deer management in Utah. The DWR carefully considers that public feedback and strives to implement science-based and data-driven management. As detailed in the statewide management plan, one strategy is to implement research studies on specific herd units that are chronically below population objective to identify limiting factors and recommend solutions. Often, the research priorities are driven by biologists, but passionate mule deer hunters and advocates also contribute information and request answers to specific questions related to management of mule deer.

Utah has the largest active mule deer research and monitoring program in the West and is constantly seeking to learn and improve mule deer management. Sometimes, the public asks the DWR to test new strategies or to take a fresh look at management practices that may have been implemented and discontinued in the past. Previous research projects conducted by the DWR have shown that new discoveries can be made — particularly given the use of new technologies not available to earlier research efforts.

The mule deer hunting strategies most frequently asked about and requested by hunters include antler point restrictions, shortened season dates and restrictions on hunting weapon technology. (These strategies are often viewed as ways to increase hunting opportunity while also managing for more mature bucks). Many of these strategies have been tested in the past in Utah and other western states with mixed results. However, with new research capabilities in place, along with different hunt structures and an intense and growing demand and interest in mule deer hunting, we are proposing to implement these strategies on a few units in southern Utah on a trial basis. We want to research their impacts on mule deer populations and understand the social implications of these strategies.

Goals of the Study

The goal of the study is to determine if hunt restrictions based on antler points, season lengths and weapon technology can improve mule deer population performance, hunting opportunity and satisfaction in Utah. Specifically, we aim to determine if implementing these management strategies results in: 1) sustainable increases in overall deer numbers, overall buck numbers, and/or fawn production, 2) maintained or expanded general-season hunting

opportunities, and 3) increased satisfaction with a) deer management practices, b) available opportunities to hunt mule deer or c) the mule deer hunting experience.

Proposed Methods and Timeline

We propose to implement and test the following mule deer buck hunting strategies: antler point restrictions, shortened season dates and use of restricted weapons. We will test each of these strategies on various hunting units and compare results on those units with the past performance of those units as well as performance on nearby reference units where those strategies will not be implemented. Our proposed test and reference units are located in southern Utah because of public input and demand from hunters in that region for changes to harvest strategies. Moreover, large population fluctuations on northern Utah units after winter 2022-2023 make that part of the state less suited to a research study addressing hunt strategies at this time. We propose these hunt strategies be implemented for four hunting seasons (2024-2027) to allow sufficient data to assess both the effects on the deer populations and the social acceptance or rejection of these strategies. After the testing concludes, we will analyze the results and take the findings into consideration when the next version of the Utah Mule Deer Statewide Management Plan is revised and implemented.

Antler point restrictions — Pine Valley unit

Hunters on this unit would only legally be allowed to take a buck with four points or more on at least one antler. A point means a projection longer than one inch, measured from its base to its tip. The eye guard is not counted as a point.

Shortened general-season dates — Southwest Desert and Beaver units

Archery — 14 days, opens the first Saturday in September

Muzzleloader — 5 days, Wed.–Sun., maintaining the current opening day

Any Legal Weapon — 5 days, Sat.–Wed., maintaining the current opening day

Restricted weapons — Mt. Dutton unit

Restricted archery — current definition with the following additional restrictions:

- (a) must be a single-stringed long bow or recurve bow with no cables, pulleys or cams;
- (b) has no sights; and
- (c) has a draw weight of 40 pounds or more.

Restricted muzzleloader — current definition with the following additional restrictions:

- (a) the ignition system is limited to traditional flintlock, wheellock, matchlock, musket cap, or percussion cap which must be entirely visible when the hammer is drawn back. All other ignition systems, including 209 primers, are prohibited; and
- (b) contains only open sights or peep sights.

Restricted rifle — current definition with the following additional restrictions:

- (a) contains only open sights or peep sights; and

(b) cannot be semi-automatic.

Combined all treatments — Boulder/Kaiparowits unit

In order to test for compounding effects of treatments, we also recommend testing one unit that will receive all three treatments simultaneously, including antler point restrictions, shortened season dates and restricted weapons.

Reference Units — Monroe and Zion units

These units will not have any treatment, in order to provide comparative data.

Permits Numbers on Experiment Testing and Control Units

The proposed buck harvest strategies will be implemented with the goal of maintaining opportunities for hunters while also having healthy, robust mule deer populations. To control for variation in hunter numbers, we propose maintaining stable numbers of general-season deer permits in the treatment and reference units throughout the study. By maintaining permit numbers, we will be better able to attribute observed responses to changes in hunt strategies rather than fluctuations in permit numbers.

To set permits, we propose using the four-year average of permit numbers from 2020-2023. The DWR will monitor postseason buck-to-doe ratios, but will not recommend annual changes to permit numbers unless ratios deviate drastically from the current objectives (18 to 20 bucks per 100 does). If the buck-to-doe ratio exceeds 24 bucks per 100 does or drops below 15 bucks per 100 does on a given unit, the DWR director may adjust permits up to 20% annually in an attempt to maintain stable buck-to-doe ratios. This adjustment may occur during the first year of the study if any of the study units are found to be outside the buck-to-doe ratio parameters during 2023 postseason classification. The percent adjustments will be determined using the DWR’s proven methodology currently used to achieve buck-to-doe ratio objectives on other general-season units with the target of stabilizing buck-to-doe ratios and getting them within the 15 to 24 range.

General-season buck deer permit treatment and control units recommendations

| Unit | Treatment type | Four-year average permits |
|---------------------|---|---------------------------|
| Pine Valley | Four points or more antler point restrictions | 3,150 |
| Beaver | Shortened seasons | 1,475 |
| Southwest Desert | Shortened seasons | 525 |
| Mt Dutton | Restricted weapons | 325 |
| Boulder/Kaiparowits | Combined, all treatments | 1,125 |
| Monroe | Reference, no treatment | 750 |
| Zion | Reference, no treatment | 2,900 |



Monitoring and Results

The DWR staff and research partners will collect pertinent data to evaluate the effectiveness of the three recommended hunting strategies. On all units, we will collect fall classification data, including the number of fawns per 100 does to evaluate changes in production and 6-month neonate fawn survival. We will also collect data on the number of bucks per 100 does, including the number of mature bucks per 100 does, to assess how the different hunt strategies may influence the male segment of the population. On Boulder/Kaiparowits, Pine Valley, Zion (reference) and Monroe (reference), we will assess adult buck and doe survival and body condition (via ultrasonography), whereas we will assess 6-month fawn survival on Monroe and Pine Valley. On all units with collared mule deer, we will investigate mortalities to determine the likely cause of death for each animal. Combining both classification and survival data will allow us to calculate the population growth rate (λ) for each population and determine whether it changed during this study and the likely reason for any changes.

Hunter compliance — particularly with the antler point restrictions treatment — will be a major part of assessing the influence of these new hunt strategies. Consequently, we will conduct line transect surveys on each unit to estimate wounding loss (one of the primary arguments against antler point restrictions) and estimate the number of animals shot but abandoned. We will also assess illegal take or abandoned animals and non-compliance with season dates and weapon restrictions based on the number of law enforcement cases.

We will use mandatory harvest reporting to determine success rates for hunters. Mandatory reporting will include collection of data on antler size, estimated ages of harvested bucks, date of harvest, number of and specific days hunted, hunter satisfaction and hunter crowding. We will also examine application data to assess whether hunters increased their selection for units with the different hunt strategies or avoided them. Lastly, we will conduct at least one survey (possibly more) of hunters to get more in-depth information on their opinions about the different hunting strategies.

The DWR will collaborate with research partners to conduct a thorough scientific analysis of data collected to understand the influence of changes in hunt strategies on mule deer populations and hunting in Utah. All results will be evaluated in the context of study goals and will be considered in the statewide deer plan revision that is tentatively scheduled for 2029.

Additional Strategies and Measures to Enhance Deer Populations

Although this study is focused on testing the impacts and interest of three different hunting strategies in southern Utah, the DWR will continue to do everything we can to enhance and grow deer populations across the state. These efforts include the following:

- Continuing to monitor mule deer survival, body condition and cause-specific mortality on units throughout Utah.
- Conducting other mule deer research studies designed to identify and implement management strategies to address limiting factors for each population.
- Identifying movement corridors and movement barriers across the state in collaboration with the Utah Wildlife Migration Initiative.

- Completing extensive habitat-improvement work through Utah's Watershed Restoration Initiative, with an increased focus on summer range where needed.
- Continuing our aggressive predator-management program to minimize the impacts predators can have on mule deer populations.



SPENCER J. COX
Governor

DIEDRE M. HENDERSON
Lieutenant Governor

State of Utah

DEPARTMENT OF NATURAL RESOURCES

JOEL FERRY
Executive Director

Division of Wildlife Resources

J. SHIRLEY
Division Director

MEMORANDUM

Date: October 20, 2023

To: Wildlife Board and Regional Advisory Council Members

From: Blair Stringham, Assistant Wildlife Section Chief

Subject: Technology Recommendations for Muzzleloaders and Archery Equipment

The Technology Committee met early this fall to discuss several changes to weapon types and made two recommendations for the Utah Division of Wildlife Resources (DWR) to consider. The DWR supports the committee's recommendations and is presenting the following recommendations for consideration:

Airgun, Archery, and Crossbow Recommendation

1. Remove the length restriction for arrow length and bolt length.

Muzzleloader Recommendation

1. Prohibit the use of scopes on muzzleloaders for all muzzleloader hunts.
 - a. Only open sights or peeps sights will be allowed,
 - b. Restrictions would apply to all big game muzzleloader hunts (General Season, Limited Entry, Management, H.A.M.S.).
 - c. Scopes will be allowed on muzzleloaders during Any Legal Weapon hunts.
 - d. Visual impairment COR's for scopes will still be allowed.

All changes will apply to R657-5. See the redline version of rule included in the packet for specific changes to rule language.

R657. Natural Resources, Wildlife Resources.

R657-5. Taking Big Game.

R657-5-1. Purpose and Authority.

- (1) Under authority of Sections 23A-2-304 and 23A-2-305, the Wildlife Board has established:
 - (a) this rule for taking deer, elk, pronghorn, moose, bison, bighorn sheep, and Rocky Mountain goat.
 - (b) appropriate weapons or devices to take big game and restrictions to weapons or devices to take big game.
- (2) Specific dates, areas, methods of take, requirements, and other administrative details which may change annually are published in the guidebook of the Wildlife Board for taking big game.

R657-5-8. Rifles, Shotguns, Airguns, and Crossbows.

- (1) A rifle used to hunt big game must:
 - (a) fire centerfire cartridges and expanding bullets; and
 - (b) have no attachment capable of electronic function, other than illuminated reticles.
- (2) A shotgun used to hunt big game must:
 - (a) be 20 gauge or larger;
 - (b) fire only 00 or larger buckshot or slug ammunition; and
 - (c) have no attachment capable of electronic function, other than illuminated reticles.
- (3) An airgun used to hunt big game must:
 - (a) be pneumatically powered;
 - (b) be pressurized solely through a separate charging device; and
 - (c) may only fire a bolt or arrow:
 - (i) ~~no less than 16 inches long;~~
 - (ii) with a fixed or expandable broadhead at least 7/8 inch wide at its widest position; and
 - (iii) traveling no less than 400 feet per second at the muzzle; and
 - (d) have no attachment capable of electronic function, other than illuminated reticles.
- (4) A crossbow used to hunt big game must have a minimum draw weight of 125 pounds and a positive mechanical safety mechanism.
 - (b) A crossbow arrow or bolt used to hunt big game must ~~be at least 16 inches long and~~ have:
 - (i) fixed broadheads that are at least 7/8 inch wide at the widest point; or
 - (ii) expandable, mechanical broadheads that are at least 7/8 inch wide at the widest point when the broadhead is in the open position; and
 - (iii) no electronic function other than an illuminated nock.
 - (c) Unless otherwise authorized by the division through a certificate of registration, it is unlawful for any person to:
 - (i) hunt big game with a crossbow or airgun during a big game archery hunt;
 - (ii) carry a cocked crossbow containing an arrow or a bolt while in or on any motorized vehicle on a public highway or other public right-of-way; or
 - (iii) hunt any protected wildlife with a crossbow utilizing a bolt that has any chemical, explosive or electronic device attached.
- (5) A crossbow used to hunt big game may have a telescopic sight only during an any weapon hunt ~~But~~but no other attachment capable of electronic function, other than illuminated reticles.

R657-5-9. Handguns.

- (1) A handgun used to take big game may not have an attachment capable of electronic function, other than illuminated reticles.
- (2) A handgun may be used to take deer and pronghorn, provided the handgun:
 - (a) is a minimum of .24 caliber;
 - (b) fires a centerfire cartridge with an expanding bullet; and
 - (c) develops 500 foot-pounds of energy at the muzzle.
- (3) A handgun may be used to take elk, moose, bison, bighorn sheep, and Rocky Mountain goat, provided the handgun:
 - (a) is a minimum of .24 caliber;
 - (b) fires a centerfire cartridge with an expanding bullet; and
 - (c) develops 500 foot-pounds of energy at 100 yards.

R657-5-10. Muzzleloaders.

- (1) A muzzleloader may be used during any big game hunt, except an archery hunt, provided the muzzleloader:
 - (a) has both the powder and bullet loaded from the muzzle;
 - (b) has open sights~~;~~ or peep sights~~;~~ ~~or a variable or fixed power scope, including a magnifying scope;~~
 - (c) has a single barrel;
 - (d) has a minimum barrel length of 18 inches;
 - (e) is capable of being fired only once without reloading;

- (f) powder and bullet, or powder, sabot and bullet are not bonded together as one unit for loading;
- (g) is loaded with black powder or black powder substitute, which must not contain smokeless powder; and
- (h) has no attachment capable of electronic function, other than illuminated reticles.
- (2)(a) A lead or expanding bullet or projectile of at least 40 caliber must be used to hunt big game.
- (b) A bullet 130 grains or heavier, or a sabot 170 grains or heavier, must be used for taking deer and pronghorn.
- (c) A 210 grain or heavier bullet must be used for taking elk, moose, bison, bighorn sheep, and Rocky Mountain goat, except sabot bullets used for taking these species must be a minimum of 240 grains.
- (3) A person who has obtained a muzzleloader permit for a big game hunt may use only muzzleloader equipment authorized in Subsections (1) and (2) to take the species authorized in the permit.
- (4) A person who has obtained an any weapon permit for a big game hunt may
 - [\(a\) use muzzleloader equipment authorized in this section; and](#)
 - [\(b\) may use a variable or fixed power scope, including a magnifying scope](#) to take the species authorized in the permit.

R657-5-11. Archery Equipment.

- (1) Archery equipment may be used during any big game hunt, except a muzzleloader hunt, provided:
 - (a) the minimum bow pull is 30 pounds at the draw or the peak, whichever comes first;
 - (b) arrowheads used have two or more sharp cutting edges that cannot pass through a 7/8 inch ring;
 - (c) expanding arrowheads cannot pass through a 7/8 inch ring when expanded; and
 - (d) arrows must:
 - ~~(i) be a minimum of 20 inches in length from the tip of the arrowhead to the tip of the nock; and~~
 - ~~(ii) have no electronic function other than illuminated nocks; and~~
 - ~~(iii) the bow does not include, have attached, or use any electronic device other than:~~
 - (A) illuminated sight pins; or
 - (B) a device capable of capturing picture or video data provided the given device cannot aid in the take of a big game animal.
- (2) The following equipment or devices may not be used to take big game:
 - (a) a crossbow, except as provided in Subsection (5) and Rule R657-12;
 - (b) arrows with chemically treated or explosive arrowheads;
 - (c) a mechanical device for holding the bow at any increment of draw, except as provided in Subsection (5) and Rule R657-12;
 - (d) a release aid that is not hand held or that supports the draw weight of the bow, except as provided in Subsection (5) and Rule R657-12;
 - (e) a bow with a magnifying aiming device, a single lens, peep-mounted glass does not constitute a magnified aiming device; or
 - (f) an airgun, except as provided in Subsection (5).
- (3) Arrows carried in or on a vehicle where a person is riding must be in an arrow quiver or a closed case.
- (4) A person who has obtained an archery permit for a big game hunt may only use archery equipment authorized in Subsections (1) and (2) to take the species authorized in the permit.
- (5) A person who has obtained an any weapon permit for a big game hunt may use archery equipment authorized in this section to take the species authorized in the permit, and may also use a crossbow, draw-lock, or airgun satisfying the minimum requirements of this rule.
- (6) A person hunting an archery-only season on a once-in-a-lifetime hunt may only use archery equipment authorized in Subsections (1) and (2) to take the species authorized in the permit.

R657-5-33. Limited Entry Bull Elk Hunts.

- (1) To hunt in a limited entry bull elk area, a hunter must obtain a limited entry bull elk permit for the area.
- (2)(a) A limited entry bull elk permit allows a person, using the prescribed legal weapon, to take one bull elk within the area and season specified on the permit, except as provided in Subsection (5) and excluding elk cooperative wildlife management units located within a limited entry unit. Spike bull elk restrictions do not apply to limited entry elk permittees.
- (3)(a) The Wildlife Board may establish a multi-season hunting opportunity in the big game guidebooks for selected limited entry bull elk units.
 - (b) A person that obtains a limited entry bull elk permit with a multi-season opportunity may hunt during any of the following limited entry bull elk seasons established in the Wildlife Board guidebooks for the unit specified on the limited entry bull elk permit:
 - (i) August and September archery seasons, using only archery equipment prescribed in Section R657-5-11 for taking elk;
 - (ii) muzzleloader season, using only muzzleloader equipment prescribed in Section R657-5-10 for taking elk;
 - (iii) any weapon season, using any legal weapon prescribed in Rule R657-5 for taking elk; and
 - (iv) multi-season permit holders may not hunt during late season, December archery limited entry bull elk seasons.
 - (c) A landowner association under Rule R657-43 is not eligible to receive a multi-season hunting opportunity for limited entry units nor late season, December archery limited entry bull elk seasons.

(4) A limited entry bull elk permit, including a permit with a multi-season opportunity, is valid only within the boundaries of the unit designated on the permit, excluding:

- (a) areas closed to hunting;
- (b) elk cooperative wildlife management units; and
- (c) Indian tribal trust lands.

(5) A person who possesses any limited entry archery bull elk permit, including a permit with a multi-season opportunity, may hunt bull elk within any extended archery area during the established extended archery season for that area, provided the person:

- (a) did not take a bull elk during the limited entry hunt;
- (b) uses the prescribed archery equipment for the extended archery area;
- (c) completes the annual Archery Ethics Course required to hunt extended archery areas during the extended archery season; and

(d) possesses on their person while hunting:

- (i) the limited entry bull elk permit; and
- (ii) the Archery Ethics Course Certificate of Completion.

(6) "Prescribed legal weapon" means for purposes of this subsection:

- (a) archery equipment, as defined in Section R657-5-11, when hunting the archery season, excluding a crossbow, draw-lock, and airgun;
- (b) muzzleloader equipment, as defined in Section R657-5-10, when hunting the muzzleloader season; and
- (c) any legal weapon, including a muzzleloader [with a fixed or variable magnifying scope](#), crossbow with a fixed or variable magnifying scope or draw-lock, or airgun when hunting during the any weapon season.

(7)(a) A person who has obtained a limited entry or cooperative wildlife management unit bull elk permit must report hunt information within 30 calendar days after the end of the hunting season, whether the permit holder was successful or unsuccessful in harvesting a bull elk.

(b) Limited entry and cooperative wildlife management unit bull elk permit holders must report hunt information by telephone, or through the division's website.

(c) A person who fails to comply with the requirement in Subsection (a) shall be ineligible to apply for any once-in-a-lifetime, premium limited entry, limited entry, or cooperative wildlife management unit permit or bonus point in the following year.

(d) Late questionnaires may be accepted pursuant to Subsection R657-42-9(2).

(8) A person who has obtained a limited entry bull elk permit may not hunt during any other elk hunt or obtain any other elk permit, except as provided in Subsections (5) and R657-5-34(3).

R657-5-47. Handgun-Archery-Muzzleloader-Shotgun-Straight-walled Rifle-Only Hunt.

(1) The Wildlife Board may prescribe Handgun-Archery-Muzzleloader-Shotgun-Straight-walled Rifle-Only hunts for any big game species.

(2) An individual may only use the following weapons on a Handgun-Archery-Muzzleloader-Shotgun-Straight-walled Rifle-Only hunt:

(a) a legal handgun for the species being hunted, consistent with Section R657-5-9 must:

- (i) have no attached scope;
- (ii) have no more than a single barrel 15 inches or less in length, including the chamber;
- (iii) be no more than 24 inches in overall length; and
- (iv) have a single rear handgrip without any form of:
 - (A) a fixed, detachable, or collapsible buttstock;
 - (B) an apparatus or extension behind the rear grip capable of being used to steady the handgun against the body while firing; or

(C) a vertical foregrip;

(b) legal archery equipment consistent with Section R657-5-11;

(c) a legal muzzleloader consistent with Section R657-5-10[~~with no attached scope~~];

(d) a legal shotgun consistent with Subsection R657-5-8(2), with the following restrictions:

(i) no attached scope; or

(ii) not semi-automatic.

(e) a rifle as detailed in Subsection R657-5-8(1), with the following restrictions:

(i) not semi-automatic;

(ii) no attached scope; and

(iii) utilizes a straight-walled cartridge with a minimum bullet diameter of .35 caliber and a minimum case length of not less than 1.16 inches.

(3) A person who has obtained a Handgun-Archery-Muzzleloader-Shotgun-Straight-walled Rifle-Only permit may take one animal of the big game species identified on the permit.

(4) A person who has obtained a Handgun-Archery-Muzzleloader-Shotgun-Straight-walled Rifle-Only permit may only hunt under that permit during the season dates and within the boundaries identified on the permit and in the guidebooks of the Wildlife Board for taking big game.

(5) A Handgun-Archery-Muzzleloader-Shotgun-Straight-walled Rifle-Only hunt is not a centerfire rifle hunt for purposes of Section 23A-11-205 or R657-5-48.

(6) A Handgun-Archery-Muzzleloader-Shotgun-Straight-walled Rifle-Only permit may not be used on an extended archery hunt.

(7) Electronic communication to receive real-time information on hunter or game location to aid in the stalking of a specific big game animal is prohibited on a Handgun-Archery-Muzzleloader-Shotgun-Straight-walled Rifle-Only hunt.

KEY: wildlife, game laws, big game seasons

Date of Last Change: [~~October 1,~~]2023

Notice of Continuation: September 8, 2020

Authorizing, and Implemented or Interpreted Law: 23A-2-304; 23A-2-305; 23A-11-201; 23A-11-202



SPENCER J. COX
Governor

DIEDRE M. HENDERSON
Lieutenant Governor

State of Utah

DEPARTMENT OF NATURAL RESOURCES

JOEL FERRY
Executive Director

Division of Wildlife Resources

J. SHIRLEY
Division Director

MEMORANDUM

TO: Regional Advisory Council Members and Wildlife Board

FROM: Bryan Christensen, Dedicated Hunter Program Coordinator

DATE: October 19, 2023

SUBJECT: Proposed changes to the Dedicated Hunter Program and associated Administrative Rules R657-38, R657-62, and R657-42

In efforts to simplify the Dedicated Hunter program and maintain consistency with other general season buck deer hunting in the future, the UDWR is recommending some minor changes and clarifications to the program. The following changes are proposed:

Admin. Rule R657-38

The UDWR is proposing the following changes, additions and clarifications:

- All sections:
 - Updates to all Utah Annotated Code references
 - Minor corrections to spacing or other grammatical errors.
- Section 38-2 Definitions:
 - Addition of term “Enrollment” to list of definitions.
 - Modify definition of “Program Harvest” to accommodate reporting process change.
- Section 38-3 Dedicated Hunter Certificates of Registration:
 - Clarify a Dedicated Hunter may not switch hunting areas during the 3 year program. This concept was already in existing rule, but needed improved wording.
 - Clarify that changes such as shortened seasons, boundary adjustments, weapon restrictions, or other special regulations occurring on general season hunting areas also apply to Dedicated Hunters. This concept was already in existing rule, but needed improved wording.
 - Allow provision for Dedicated Hunters who drew in 2022 or 2023 an option to withdraw and receive a partial refund and partial reinstatement of preference points—if antler restrictions or restricted weapon regulations are implemented in 2024 or 2025.
- Section 38-9 Service Hour Requirement:
 - Redistribute minimum service hour requirement. The proposed minimums would be 6 hours for the 1st year permit; an additional 16 hours for the 2nd year permit; and an additional 10 hours for the 3rd year. The overall total remains unchanged (32 service hours).

- Section 38-10 Certificate of Registration Extension:
 - Revise the procedure for 1-year extensions given to Dedicated Hunters who draw a limited entry buck deer permit from the Utah Big Game drawing. This change would automatically apply a 1-year extension.
 - Minimum annual requirements would shift into the subsequent years.
- Section 38-11 Allowable Harvest and Reporting Requirements:
 - Remove the requirement for returning paper permits in order to report a non-harvest.
 - Dedicated Hunter harvest reporting would occur via online method.

Admin. Rule R657-42

The UDWR is proposing the following change:

- Section 42-5: Refunds
 - Add temporary provision for current Dedicated Hunters to be allowed to withdraw and receive partial refund and partial reinstatement of points if their hunting area is changed to a restricted weapon or antler restriction during 2024 or 2025.

Admin. Rule R657-62

The UDWR is proposing the following changes:

- Section 62-16 Dedicated Hunter Certificates of Registration:
 - Discontinue the online pre-application orientation/test for Dedicated Hunter applicants.
 - A single, simplified information page will replace the orientation within the Utah Big Game drawing application.

R657. Natural Resources, Wildlife Resources.

R657-38. Dedicated Hunter Program.

R657-38-1. Purpose and Authority.

- (1) Under the authority of Section 23A-2-305, this rule provides the standards and requirements for qualified deer hunters to participate in the Dedicated Hunter Program by obtaining a certificate of registration.
- (2) The Dedicated Hunter Program is a program that:
 - (a) provides expanded hunting opportunities;
 - (b) requires participation in wildlife conservation projects; and
 - (c) provides educational training in hunter ethics and wildlife management principles.

R657-38-2. Definitions.

- (1) Terms used in this rule are defined in Section 23A-1-101.
- (2) In addition:
 - (a) "Dedicated Hunter Permit" means a general buck deer permit issued to a participant in the Dedicated Hunter Program, which authorizes the participant to hunt deer during the general archery, general muzzleloader and general any weapon open seasons in the hunt area specified on the permit.
 - (b) "Division" means the Utah Division of Wildlife Resources.
 - ~~(e)~~
 - (c) "Enrollment" means the three year term which the certificate of registration is valid.
 - (d) "Hunt area" means an area prescribed by the Wildlife Board where general archery, general muzzleloader and general any legal weapon buck deer hunting is open to permit holders for taking deer.
 - ~~(d)~~(e) "Participant" means a person who has remitted the appropriate fee and has been issued a Dedicated Hunter certificate of registration.
 - ~~(e)~~(f) "Program" means the Dedicated Hunter Program.
 - ~~(f)~~(g) "Program harvest" means using a Dedicated Hunter permit to tag a harvested deer or failing to ~~return~~ submit a ~~Dedicated Hunter permit with the kill tag attached~~ harvest report as required, while enrolled in the program.
 - (g)(h) "Wildlife conservation project" means any project that provides wildlife habitat protection or enhancement, improves public hunting or fishing access, or directly benefits wildlife or the Division's current needs and is pre-authorized by the Division.

R657-38-3. Dedicated Hunter Certificates of Registration.

- (1)(a) To participate in the Dedicated Hunter Program, a person must apply for, be issued, and sign a certificate of registration as prescribed by the Division.
- (b) Certificates of registration for a designated hunt area are issued by the Division through a drawing as prescribed in the guidebook of the Wildlife Board for taking big game and Rule R657-62.
- (c) Certificates of registration are valid for three consecutive years, except as provided by Sections R657-38-10 and R657-38-13, beginning on the date the big game drawing results are released and ending on the last day of the general season hunt for the third year of enrollment.
- (d) The quantity of certificates of registrations for the Dedicated Hunter Program available in the big game drawing is limited to:
 - (i) 15 percent of the total annual general season buck deer quota for each respective hunt area, inclusive of those certificates of registration that are within ~~their effective term~~ active enrollments; or
 - (ii) one resident and one non-resident certificate of registration if the 15 percent total on that hunt area is met or exceeded.
- (e) Certificates of registration remaining unissued from the Dedicated Hunter portion of the big game drawing shall be redistributed as general single-season permits for their respective hunt areas in the general buck deer drawing.
- (2) The Division may deny issuance of a certificate of registration for the Dedicated Hunter Program for any of the reasons identified as a basis for suspension in Section 23A-4-1106 (7) and Section R657-38-15.
- (3)(a) A certificate of registration for the Dedicated Hunter Program conditionally authorizes the participant to obtain a Dedicated Hunter permit, which may be used to hunt deer within the area listed on the permit, during the general archery, general muzzleloader and general any legal weapon buck deer seasons according to the dates and boundaries established by the Wildlife Board.
- (b) When available, the certificate of registration may also authorize the Dedicated Hunter permit to include the general deer archery extended area during the extended season dates.
- (c) The person must use the appropriate weapon type specified by each season and boundary.
- (4) The participant~~s~~ may not change to a different hunt area~~, as issued through the drawing, shall remain the same for the entire duration of the certificate of registration~~ during the enrollment.
- ~~(5) Participants in the Dedicated Hunter Program~~
- (5) The Division may make changes including, but not limited to, season opportunity, season length, boundaries, allowable weapon types, or other special restrictions to all or any portion of a hunt area or management unit, when in the interest of the wildlife resource or as necessary for the Division to accomplish its management objectives, and shall not guarantee each hunt area remains unchanged during the Dedicated Hunter's enrollment period.
- (a) Dedicated Hunters shall be subject to any changes subsequently made to this or other rules ~~during the term of enrollment~~ pertaining to the hunt area they have drawn.

- (b) [Dedicated Hunters having active certificates of registration obtained prior to 2024 and whose hunt area becomes a restricted weapon or antler restriction unit during 2024 or 2025, may use their hunting permit according to the new regulations for that unit, or if eligible, may withdraw from the program and receive a partial refund and partial reinstatement of preference points pursuant to Rule R657-42.](#)

R657-38-4. Applications for Certificates of Registration.

- (1) Applications to obtain a Dedicated Hunter certificate of registration are made pursuant to R657-62-16.
- (2) To apply for a Dedicated Hunter certificate of registration, applicants must:
 - (a) have a valid Utah hunting or combination license;
 - (b) meet all age, hunter education, and license requirements in Sections 23A-4-1001, 23A-4-703, 23A-4-706, and 23A-4-707 and ~~in~~ applicable rules, except that:
 - (i) A person 11 years of age may apply for and obtain a Dedicated Hunter certificate of registration if that person's twelfth birthday falls in the calendar year the certificate [of registration](#) is issued; and
 - (ii) a person may not hunt big game prior to their twelfth birthday; and
 - (c) be compliant with the restrictions in Subsection (2).
 - (3) A person under any wildlife suspension may not apply for a certificate of registration until their suspension period has ended.

R657-38-5. Dedicated Hunter Preference Point System.

Dedicated Hunter Preference points are issued pursuant to [Section](#) R657-62-10.

R657-38-6. Fees.

- (1) Any person who is 17 years of age or younger on July 31 of the application year shall pay the youth participant fees.
- (2) Any person who is 18 years of age or older on July 31 of the application year, or is a Lifetime License holder, shall pay the associated participant fees.
- (3)(a) A participant who enters the program as a Utah resident and thereafter becomes a nonresident shall be changed to a nonresident status and may be issued nonresident permits for the remainder of the enrollment period.
 - (i) No additional fee shall be applied to the nonresident certificate of registration or its respective permits following this [residency](#) change.
 - (~~5~~4)(a) A participant who enters the program as a nonresident and thereafter becomes a Utah resident, shall be changed to a resident status and may be issued resident permits for the remainder of the enrollment period.
 - (i) No refund will be issued for the difference of the resident certificate of registration fee or its respective permits following this [residency](#) change.

R657-38-7. Refunds.

- (1) A refund for the Dedicated Hunter certificate of registration may not be issued, except as provided in Sections 23A-4-207 and 301 and R657-42.
- (2) Any eligible refund of a certificate of registration fee may be issued pro rata, based on the number of years in which any portion of a hunt may have occurred during the enrollment period.
- (3) Drawing application fees are nonrefundable.
- (4) A refund shall not be issued under any circumstance if a participant's harvest record indicates two program harvests.

R657-38-8. Wildlife Conservation and Ethics Course Requirement.

- (1) After being issued a Dedicated Hunter certificate of registration and prior to obtaining the first Dedicated Hunter permit of the program, a participant must complete a wildlife conservation and ethics course as prescribed by the Division.
- (2) The wildlife conservation and ethics course is available through the Division's Website.
- (3) The Division shall keep a record of all participants who complete the wildlife conservation and ethics course as required by Utah law.

R657-38-9. Service Hour Requirement.

- (1)(a) A participant must complete the minimum annual required service hours as a volunteer on Division -approved wildlife conservation projects in order to obtain a Dedicated Hunter permit.
- (b) A participant must complete a minimum of ~~8~~6 service hours prior to receiving a Dedicated Hunter permit in the first year of the program.
- (c) A participant must complete a minimum total of ~~24~~22 service hours prior to receiving a Dedicated Hunter permit in the second year of the program.
- (d) A participant must complete a minimum total of 32 service hours prior to receiving a Dedicated Hunter permit in the third year of the program.
- (e) If the participant has two program harvests, the full 32 hours must be completed prior to the expiration of the certificate of registration.

(f) If a participant having two program harvests fails to complete the required hours of service prior to expiration of the certificate of registration, the participant is ineligible to apply for or obtain any Utah hunting license or permit until the remaining service hours have been completed.

(g) After a certificate of registration has expired, incomplete service hours may be completed through Division approved projects or by payment at the established purchase rate.

(2) A participant who has not been issued any Dedicated Hunter permits during the enrollment shall not be required to complete the service hour requirement.

(3)(a) Residents and nonresidents may complete service hour requirements through service, purchase, or a combination of the two options.

(b) Wildlife conservation projects may be provided by the Division, or any other individual or entity, but must be pre-approved by the Division.

(c) Goods or services donated to the Division by a participant may be, at the discretion of the Division, substituted for service hours based upon current market values or comparative state contract rates for the goods or services, and the approved service hour purchase rate.

(d) The Division shall publicize the dates, times, locations and description of approved wildlife conservation projects and activities on the Division's Website.

(4)(a) Service hours performed prior to an enrollment shall not be accepted as service credit.

(b) Service hours exceeding the minimum requirement shall not be applicable beyond the enrollment period and shall not be credited to any subsequent certificate of registration.

(5)(a) Participants are required to perform their own service hours.

(b) Service hours are not transferrable to other participants or certificates of registration.

R657-38-10. Certificate of Registration Extension.

(1)(a) A participant who is a member of the United States Armed Forces or public safety organization that is mobilized or deployed on orders in the interest of national defense or declared state of emergency while enrolled in the program may request a one-year program extension if:

(i) the person is mobilized or deployed for a minimum period of three consecutive months; or

(ii) the participant is mobilized or deployed during the general buck deer season.

(b) The participant must provide evidence of the mobilization or deployment period and that the mobilization or deployment precluded the participant from using the Dedicated Hunter permit.

(c) An extension may not be granted if the participant hunted during the general deer season.

(d) If an extension is granted due to mobilization or deployment:

(i) the minimum annual program requirements shall be postponed into the subsequent year of the enrollment;

(ii) a permit will not be issued in the year the qualifying mobilization or deployment occurs.

(2)(a) A person who is enrolled in the program and obtains a limited entry buck deer permit through the Utah Big Game drawing or accepts a poaching reported reward limited entry buck deer permit, [~~may request~~ will receive a one-year extension to the Dedicated Hunter program enrollment period ~~[-be extended one additional year].~~

~~[- (b) The extension request must be received by the Division before the established deadline, as published on the Division's website.]~~

~~[- (c) An extension is not available to participants who have two program harvests]~~

(i) , If the limited entry deer permit is surrendered during the enrollment, the extension will be retracted and the original three year enrollment restored. ii The minimum annual program requirements shall be postponed into the subsequent year of the enrollment.

R657-38-11. Allowable Harvest and ~~Permit Return~~ Reporting Requirements.

(1)(a) A program participant may take a maximum of two general season deer within the enrollment period. Only one deer may be harvested in a single year.

(b) The harvest of an antlerless deer using a Dedicated Hunter permit, when permissible in the extended archery areas and seasons established in the big game guidebook, shall be considered a program harvest.

(2) Upon issuance of a Dedicated Hunter permit, the participant is credited with a program harvest.

(a) Two program harvests are allowed within an enrollment period.

(b) If program harvests accrue during the first year and second year of the enrollment, a permit shall not be issued for the third year.

(c) In order to remove a program harvest ~~[-credit]~~, the participant must:

(i) not have harvested a deer with the Dedicated Hunter permit; and

~~(ii) [return the permit with the attached tag, or a qualifying affidavit as proof of non harvest to a Division office. A handling fee and notarization may be required for processing an affidavit.]~~ must submit a harvest report prior to the annual deadline established by the Division pursuant to Rule R657-5.

R657-38-12. Dedicated Hunter Permits.

(1)(a) Pursuant to Sections 23A-4-706 and 23A-4-707 a person must have a valid Utah hunting or combination license to apply for or obtain a big game permit.

(b) Except as provided in subsection (c), a permit may not be issued if the participant does not possess a valid hunting or combination license at the time of permit issuance.

(c) A valid hunting or combination license is not required to obtain a permit in the first year of the enrollment period, provided the participant possessed a valid license when applying for the Dedicated Hunter certificate of registration.

(2) The participant must have a valid Dedicated Hunter permit in possession while hunting.

(3) Upon completion of the minimum annual requirements, a Dedicated Hunter permit may be issued as published on the Division's website.

~~[(4) The Division may exclude multiple season opportunities on specific management units, or may close or reduce a season on part or all of a management unit, when in the interest of the wildlife resource or as necessary for the Division to accomplish its management objectives.]~~

~~[(5)4(a) The Division may issue a duplicate Dedicated Hunter permit pursuant to Section 23A-4-208.~~

~~(b) If a participant's unused Dedicated Hunter permit and tag is destroyed, lost, or stolen prior to, or during the hunting season in which the permit is valid, a participant may obtain a duplicate after paying the associated handling fee.~~

~~(c) A duplicate Dedicated Hunter permit shall not be issued after the closing date of the general buck deer season.~~

~~[(6)5(a) A participant may surrender a Dedicated Hunter permit in accordance with Rule R657-42.~~

~~(b) A participant may not surrender a Dedicated Hunter permit after the earliest season allowed by the permit has begun, unless the Division can verify that the permit was never in the participant's possession.~~

~~[(7)6(a) Lifetime license holders may participate in the program.~~

~~(b) A lifetime license holder shall apply for a certificate of registration in the same manner as all other prospective participants.~~

~~(c) A lifetime license holder participating in the program agrees to forego any rights to receive a lifetime license buck deer permit as provided in Section 23A-4-402 while enrolled in the program and until all outstanding service hours owed from a period of enrollment are complete.~~

~~(d) A refund or credit is not issued for a forgone lifetime license permit.~~

R657-38-13. Obtaining Other Permits.

(1)(a) Participants may not apply for or obtain any other Utah general season buck deer permit, including general landowner buck deer permits, or respective preference points issued by the Division through the big game drawing, license agents, over-the-counter sales, or the internet during an enrollment period in the program.

(b) Any other Utah general season deer permit obtained is invalid and must be surrendered prior to the beginning season date for that permit.

(c) Refunds for surrendered permits are governed by Sections 23A-4-207 and 301 and [Rule R657-42](#).

(2)(a) Participants may apply for or obtain a limited entry buck deer permit, including CWMU, limited entry landowner, conservation, expo, and poaching reported rewards permits.

(b) A limited entry buck deer permit may be obtained without completion of the annual program requirements but does not exempt the participant from fulfilling the minimum requirements of the enrollment.

(c) If the participant obtains a limited entry buck deer permit and has been issued a Dedicated Hunter permit, either the limited entry buck deer permit or the Dedicated Hunter permit must be surrendered as permissible by [Section R657-38-12](#) and [Rule R657-42](#).

(d) A participant who obtains a limited entry buck deer permit may only use that permit in the prescribed area and season listed on the permit, but Dedicated Hunter privileges are not extended to that permit.

(e) A limited entry buck deer permit may not be obtained if the Dedicated Hunter permit has been issued and the general buck deer season has started.

(f) Harvest of a limited entry buck deer as permitted shall not be counted as a program harvest.

(3)(a) Participants may apply for or obtain antlerless deer permits as provided in [Rule R657-5](#) and the guidebook of the Wildlife Board for taking big game.

(b) Except as provided in [Section R657-38-11](#), harvest of an antlerless deer with an antlerless deer permit shall not be considered a program harvest.

R657-38-14. Certificate of Registration Surrender.

(1) A participant may request to withdraw from the Dedicated Hunter program by surrendering the Dedicated Hunter certificate of registration pursuant to [Rule R657-42](#), provided the participant does not have two program harvests within the enrollment period.

(2) A participant who has two program harvests during the program enrollment may not withdraw from the program and is required to complete the program minimum requirement of 32 service hours.

(3) The Division may reinstate preference point(s) for a participant successfully surrendering in the first year of the enrollment period, provided the surrender occurs prior to the start of the general deer season~~[-]~~ [and meets all relating conditions set forth in Rule R657-42](#)

R657-38-15. Certificate of Registration Suspension.

- (1) The Division may suspend a Dedicated Hunter certificate of registration pursuant to Section 23A-4-1106 and R657-26.
- (2) A certificate of registration may also be suspended if the participant:
 - (a) fraudulently ~~submits a time sheet for~~ claims service hours the participant did not perform; or
 - (b) fraudulently completes any of the program requirements; or
 - (c) is under a judicial or administrative order suspending any wildlife hunting or fishing privilege within Utah or elsewhere;

or

- (d) provides false information on the drawing application; or
 - (e) has violated the terms of any certificate of registration issued by the Division or an associated agreement.
- (3) A Dedicated Hunter permit is invalid if a participant's certificate of registration is suspended.
 - (4) The program enrollment period shall not be extended in correlation with any suspension.

KEY: wildlife, hunting, recreation, wildlife conservation

Date of Last Change: ~~October 1~~ February 23, ~~2023~~ 2021

Notice of Continuation: September 8, 2020

Authorizing, and Implemented or Interpreted Law: 23A-2-305

R657. Natural Resources, Wildlife Resources.

R657-42. Fees, Exchanges, Surrenders, Refunds, and Reallocation of Wildlife Documents.

R657-42-1. Purpose and Authority.

(1) Under the authority of Sections 23A-4-201 and 23A-4-207 the division may issue wildlife documents in accordance with the rules of the Wildlife Board.

(2) This rule provides the standards and procedures for the:

- (a) exchange of permits;
- (b) surrender of wildlife documents;
- (c) refund of wildlife documents;
- (d) reallocation of permits; and
- (e) assessment of late fees.

R657-42-5. Refunds.

(1) The refund of a license, certificate of registration or permit shall be made in accordance with:

- (a) Section 23A-4-207 and Rule R657-50;
- (b) Section 23A-4-301 and Subsection (3); or
- (c) Section 23A-4-207 and this section.

(2)(a) An application for a refund may be obtained from any division office.

(b) All refunds must be processed through the Salt Lake Division office.

(c) Except for an individual applying for a refund under Subsection (3), an individual may apply for a refund up to 90 days after the expiration of the wildlife document.

(d) The division may reject an application for a refund that is incomplete.

(3) A person may receive a refund for a wildlife document if that person was deployed or mobilized on or after September 11, 2001, in the interest of national defense or national emergency and is thereby completely precluded from participating in the hunting or fishing activity authorized by the wildlife document, provided:

(a) the refund request is made to the division within one year of the end of the hunting or fishing season authorized by the wildlife document;

(b) the person surrenders the wildlife document to the division, or signs an affidavit stating the wildlife document is no longer in the person's possession; and

(c) the person verifies that the deployment or mobilization completely precluded them from participating in the activity authorized by the wildlife document; and

(d) the person provides military orders, or a letter from an employment supervisor on official public health or public safety organization letterhead stating:

(i) the branch of the United States Armed Forces, or name of the public health organization or public safety organization from which they were deployed or mobilized; and

(ii) the nature and length of their duty while deployed or mobilized.

(4) The division may issue a refund for a wildlife document if the person to whom it was issued dies before participating in the hunting or fishing activity authorized by the wildlife document, provided the person legally entitled to administer the decedent's estate provides the division with:

(a) picture identification;

(b) letters testamentary, letters of administration, or such other evidence establishing the person is legally entitled to administer the affairs of the decedent's estate;

(c) a photocopy of the decedent's certified death certificate; and

(d) the wildlife document for which a refund is requested.

(5)(a)(i) A person may receive a refund for a once-in-a-lifetime or limited-entry permit provided the permit is surrendered to the division no less than 30 days before the season opening date identified on the permit.

(ii) A person may receive a refund for a general season permit that must be surrendered to accept a reallocated limited entry permit for the same species.

(b) The established wildlife document refund fee will not be assessed on general season permits surrendered under Subsection (5)(a)(ii).

(6) The division may issue a refund for a wildlife document if the person to whom it was issued was precluded from participating in the activity authorized by the wildlife document due to COVID-19 related personal health concerns or general public health restrictions imposed by the federal government, a state, or a local government.

(7) The director may determine that a person did not have the opportunity to participate in an activity authorized by the wildlife document.

(8) Notwithstanding any other provision ~~is~~ of this rule, the division may reinstate a bonus point or preference point, whichever applies, and waive waiting periods, if applicable, when issuing a refund in accordance with this section.

(9) If eligible, pursuant to Rule R657-38, Dedicated Hunter Certificates of Registration obtained during 2022 or 2023 may be surrendered, and receive a partial refund and partial reinstatement of Dedicated Hunter preference points if the drawn hunting area becomes either a restricted weapon hunt or restricted antler hunt during the enrollment.

- (a) Point reinstatement will be proportional to the number of years remaining in the COR, rounded down to the nearest whole number.
- (b) Refund of the original Certificate of Registration fee will be proportional to the number of remaining years within the enrollment.
- (c) Application fees will not be refunded.
- (d) Completed service hours will not be refunded or applied toward any other Dedicated Hunter enrollment.

R657-42-8. Accepted Payment of Fees.

- (1) Personal checks, business checks, money orders, cashier's checks, and credit or debit cards are accepted for payment of wildlife documents.
- (2) Personal or business checks drawn on an out-of-state account are not accepted.
- (3) Third-party checks are not accepted.
- (4) All payments must be made payable to the Utah Division of Wildlife Resources.
- (5)(a) Credit or debit cards must be valid at least 30 days after any drawing results are posted.
- (b) Checks, and credit or debit cards will not be accepted as combined payment on single or group applications.
- (c) If applicants are applying as a group, all fees for all applicants in that group charged to a credit or debit card may be charged to multiple cards.
- (d) Handling fees and donations are charged to the credit or debit card when the application is processed.
- (e) Application amendment fees must be paid by credit or debit card.
- (f) Permit fees may be charged to the credit or debit card prior to the posting date of the drawings, if successful.
- (g) The division shall not be held responsible for bank charges incurred for the use of credit or debit cards.
- (6)(a) An application is voidable if the check is returned unpaid from the bank or the credit or debit card is invalid or refused.
- (b) The division charges a returned check collection fee for any check returned unpaid.
- (7)(a) A license or permit is voidable if the check is returned unpaid from the bank or the credit or debit card is invalid or refused.
- (b) The Division may ~~make~~ attempt to contact the successful applicant to collect payment prior to voiding the license or permit.
- (8)(a) A license or permit received by a person shall be deemed invalid if payment for that license or permit is not received, or a check is returned unpaid from the bank, or the credit or debit card is invalid or refused.
- (b) A person must notify the division of any change of credit or debit card numbers if the credit or debit card is invalid or refused.
- (9) Hunting with a permit where payment has not been received for that permit constitutes a violation of hunting without a valid permit.
- (10) The division may require a money order or cashier's check to correct payment for a license, permit, or certificate of registration.
- (11) Any person who fails to pay the required fee for any wildlife document, shall be ineligible to obtain any other wildlife document until the delinquent fees and associated collection costs are paid.
- (12) The Division may take any of the following actions when a wildlife document is voided for nonpayment or remains unissued and unpaid:
 - (a) reissue the wildlife document using the alternate drawing list for that document;
 - (b) reissue the wildlife document over-the-counter; or
 - (c) elect to withhold the wildlife document from reissuance.
- (13) The Division may reinstate the applicant's bonus points or preference points and waive waiting periods, where applicable, when:
 - (a) voiding a permit in accordance with this section and the permit is reallocated;
 - (b) withholding a wildlife document from a successful applicant for nonpayment and the permit is reallocated; or
 - (c) full payment is received by the successful applicant on a voided or withheld wildlife document that is not reallocated.

R657-42-10. Duplicates.

- (1) If an unexpired wildlife document is destroyed, lost or stolen, a person may obtain a duplicate from a division office or online license agent~~;~~ for a duplicate fee as provided in the fee schedule.
- (2) The division may waive the fee for a duplicate unexpired wildlife document, provided the person did not receive the original wildlife document.
- (3) To obtain ~~the~~a duplicate wildlife document, the applicant may be required to complete an affidavit testifying to such loss, destruction or theft.

KEY: wildlife, permits

Date of Last Change: October 1, 2023

Notice of Continuation: March 15, 2023

Authorizing, and Implemented or Interpreted Law: 23A-4-201; 23A-4-207; 23A-4-301

R657. Natural Resources, Wildlife Resources.

R657-62. Drawing Application Procedures.

R657-62-1. Purpose and Authority.

(1) Under authority of Sections 23A-2-304 and 23A-2-305, the Wildlife Board has established this rule for drawing applications and procedures.

(2) Specific season dates, bag and possession limits, areas open, number of permits and other administrative details that may change annually are published in the respective guidebooks of the Wildlife Board.

R657-62-16. Dedicated Hunter Certificates of Registration.

(1)(a) Applicants for a dedicated hunter certificate of registration must meet all age requirements, proof of hunter education requirements and youth restrictions as provided in Rule R657-38.

~~[(b) Each prospective participant must complete Dedicated Hunter program orientation course annually before submitting an application.]~~

(2) Group applications are accepted. Up to four applicants may apply as a group.

KEY: wildlife, permits

Date of Last Change: [~~October 1,~~2023

Notice of Continuation: April 9, 2019

Authorizing, and Implemented or Interpreted Law: 23A-2-304 ; 23A-2-305



SPENCER J. COX
Governor

DIEDRE M. HENDERSON
Lieutenant Governor

State of Utah

DEPARTMENT OF NATURAL RESOURCES

JOEL FERRY
Executive Director

Division of Wildlife Resources

J. SHIRLEY
Division Director

MEMORANDUM

TO: Wildlife Board and Regional Advisory Council Members

FROM: Chad Wilson, Private Lands/Public Wildlife Coordinator

DATE: Oct 23, 2023

SUBJECT: Landowner Permit Rule amendments R657-43

The following is a summary of the changes recommended to the Landowner Permit Rule R657-43:

- Allow an LOA to hunt only the private property participating in the program.
 - Remove the public access requirement
 - Still requires over 50% of the private land that is habitat in the unit to be enrolled
- Create a special drawing for landowners on limited-entry units that are not enrolled in an LOA.
 - Must have at least 640 acres of habitat
 - Up to 5% above the total number of unit permits would be available in the drawing
 - Cannot sell permits or charge trespass fees
- Create a general-season landowner permit that is only valid on private property
 - Must have 640 acres of habitat
 - Up to 10 % above the total unit permits can be issued over the counter
 - These could be sold

CW

R657. Natural Resources, Wildlife Resources.

R657-43. Landowner Permits.

R657-43-1. Purpose and Authority.

(1) Under authority of Sections 23A-2-304 and 23A-2-305, this rule provides the standards and procedures for landowners to qualify for and obtain big game hunting opportunities in recognition of the benefits their private properties provide to wildlife resources in Utah.

~~[(2)]~~

(2) The Private Landowners may apply for and obtain Vouchers from the division through one of the following three programs, and as further outlined in this rule:

(a) The division ~~[shall offer a program providing opportunities for general season big game hunts, "]~~may provide one of the following permits to individual landowners for the General Season Landowner ~~[Permits", and a program providing limited entry big game hunts, "Limited Entry Landowner Permits".]~~

~~[(b) The division shall offer buck deer permits under both programs.]~~

Permit Program:

(i) A General Season Landowner - Private Land - Buck Deer Permit may be provided for Landowners to use only on their private land; or

(ii) A General Season Landowner - Unit Wide - Buck Deer Permit that Landowners can seek through a draw process and is usable throughout the general season unit.

(b) The division may provide permits to individual Landowners on limited entry units with eligible lands that are not enrolled in a Landowner Association to hunt Buck Deer, Bull Elk, and Buck Pronghorn on their own private land.

(c) The division ~~[shall offer buck pronghorn]~~may provide Buck Deer, Bull Elk, and [bull elk]Buck Pronghorn permits [under]to Landowner Associations through the Limited Entry Landowner [Permit program]Association Program that can be:

(i) used unit wide for a Landowner Association that allow public access; or

(ii) used only on private land within the Landowner Association if no public access is allowed.

(3) The Landowner permit programs are intended to:

(a) provide an incentive for private landowners to manage their lands as quality habitat for public wildlife;

(b) assist and support the division in managing big game populations;

(c) increase private Landowner tolerance of big game on their Private Lands;

(d) increase big game hunting opportunities;

(e) increase and secure public hunting access on participating Landowners' Private Lands;

(f) reduce the division's obligations in responding to and compensating for depredation events occurring on participating Private Lands;

(g) use objective criteria to determine how hunting opportunities are allocated under the programs; and

(h) allocate hunting opportunities in a manner that fluctuates in proportion to variations in public draw permit numbers.

R657-43-2. Definitions.

(1) Terms used in this rule are defined in Section 23A-1-101.

(2) In addition:

(a) "Applicant" means a Landowner applying to participate in the General Season Buck Deer Landowner Permit program, the Limited Entry Landowner Association Permit program, or the program for Landowners on limited entry units with eligible land that is not enrolled in a Limited Entry Landowner [Permit program]Association.

(b) "Cropland" means agricultural Private Land that is cultivated and mechanically harvested and upon which the division has determined that migratory deer rely to meet herd management objectives.

(c) "Draw Application" means ~~[that]~~an application for Permits submitted to the division after the Applicant has been approved to participate in the program.

(d) "Eligible Property" means Private Land that:

(i)(A) [Private Land that]provides habitat for deer, elk or pronghorn as determined by the division;

(ii)(B) [Private Land that] is not used in the operation of a Cooperative Wildlife Management Unit for the same species;

(iii)(C) [Private Land that]is not used in the operation of an elk farm or elk hunting park; and

(iv)(D) [Private Land]is in agricultural use as provided in Section 59-2-502 and eligible for agricultural use valuation as provided in Sections 59-2-503 and 59-2-504[+and].

(v)(ii) [Private Land having]In addition to subparagraph (d)(i), Eligible Property must have one or more of the following attributes:

(A) for the purpose of receiving [general buck deer permits]General Season Private Land Landowner Buck Deer Vouchers or General Season Unit Wide Landowner Buck Deer Permits, a minimum of 100 acres of [Private Land that is]Cropland, or a minimum of 640 acres of other Private Land meeting the criteria in subsection (d)(i - iv) that is owned or leased by one Landowner or leased by one landowner within the general season unit hunt boundary or;

(B) for the purposes of receiving a Limited Entry Landowner Permit Voucher, Private Land owned or leased [~~by members of a Landowner Association that is-~~] within a limited entry [~~unit~~] elk, deer or pronghorn unit for land that is enrolled in a [Limited Entry Landowners Association](#).

(C) for the purposes of receiving a Limited Entry Landowner Permit Voucher for Private Land owned or leased within a limited entry elk, deer or pronghorn unit for land that is not enrolled in a Limited Entry Landowners Association, a minimum of 640 acres of Private Land meeting the criteria in subsection (d)(A-D) that is owned or leased by one Landowner or leased by one landowner within the limited entry unit hunt boundary.

(e) "Governing Documents" mean the legal documents executed by a Legal Entity Owners that govern the formation, operation, management, rules, duties, responsibilities, decision making [#] and dissolution of [~~such~~] said Legal Entity.

(f) "Immediate Family" means a Landowner's, a Lessee's, or a Legal Entity Owner's spouse, children, sons-in-law, daughters-in-law, father, mother, father-in-law, mother-in-law, brothers, sisters, brothers-in-law, sisters-in-law, stepchildren, and grandchildren.

(g) "Landowner" means, for the purposes of this rule, any person or Legal Entity which:

(i) owns Private Land in Utah as evidenced by such deeds vesting title in such Landowner;

(ii) is the purchaser of Private Land pursuant to a recorded contract of sale; or

(iii) is [~~a~~] [an agricultural](#) Lessee of Private Land, being any person or legal entity with a written lease whose terms permit the lessee to be in actual physical control of such Private Land.

(h) "Landowner Association" means a Legal Entity created by Landowners who own Eligible Property within a limited entry unit, which Legal Entity is organized for working with the division as outlined in this rule.

(i) "Legal Entity" means an entity such as a corporation, partnership, limited liability company, or trust that is organized under the laws of the State of Utah and otherwise qualified to do business within the State of Utah.

(j) "Legal Entity Owner" means a person or other Legal Entity which has ownership in a Legal Entity, such as a shareholder of a corporation, a member of a limited liability company, a partner in a partnership, or trustee or beneficiary of a trust.

(k) "Permit" means a hunting authorization [obtained through a draw or](#) purchased from the division by a person who is the holder of a Voucher, pursuant to the terms and authorizations contained in such Voucher.

(l) "Private Land" means, for the purposes of this rule, any real property owned or leased by a Landowner, excluding:

(i) land owned by the state or federal government;

(ii) land owned by a county or municipality;

(iii) land owned by an Indian tribe;

(iv) land enrolled in a Cooperative Wildlife Management Unit [for the same species](#) under Rule R657-37; and

(v) land where public access for big game hunting has been secured.

(m) "Qualifier Application" means the initial application submitted to the division to determine if a Landowner meets the necessary requirements to participate in the landowner permit program.

(n) "Voucher" means an authorization issued by the division to a Landowner that entitles such Landowner or its permitted transferees, if allowed pursuant to this rule, to purchase a Permit from the division.

TABLE
Landowner Permit Programs Table

| <u>Permit/Voucher Type</u> | <u>Hunt Boundary</u> | <u>Species</u> | <u>Requirements</u> | <u>Stipulations</u> | <u>Public Access</u> | <u>Permit Quantity</u> |
|----------------------------|----------------------|----------------------|---|---|----------------------|------------------------------------|
| General Season | Private Lands Only | Deer | 640 acres of Agricultural Land or Range Land | Can be sold | Not required | Up to 10% above total unit permits |
| General Season | Unit Wide | Deer | 100 acres Agricultural Land, or 640 acres of Range Land | Owner or immediate family only - cannot be sold | Not required | Up to 3% above total |
| Limited Entry - Non-LOA | Private Lands Only | Deer, Elk, Pronghorn | 640 acres of Agricultural Land or Range Land | For anyone - cannot be sold | Not required | Up to 5% above total unit permits |

| | | | | | | |
|--------------------------|-----------------------|-------------------------|-----------------------------------|-------------|-----------------|--|
| Limited Entry - LOA 1 | Unit Wide | Deer, Elk, Pronghorn | >50% of eligible land enrolled | Can be sold | Required | Percentage of habitat = percentage of LOA permits |
| Limited Entry - LOA 2 | Private Lands Only | Deer, Elk, Pronghorn | >50% of eligible land enrolled | Can be sold | Not required | Percentage of habitat = percentage of LOA permits |

R657-43-3[-] General Season Landowner [~~Permits~~]-Program - Private Land Only Buck Deer Vouchers – Availability and Eligibility.

(1)(~~a~~) The division [~~will~~]shall establish the maximum number of General Season Landowner [~~Permits for buck deer~~]- Private Land Only Buck Deer Vouchers annually by:

(a) identifying the number of public draw permits available in a hunting unit; and [~~allocate~~]

(b) allocating up to an additional [~~3~~]10% of that number to the [~~program - Vouchers for~~]-General Season Landowner [~~Permits for buck deer will be issued through the General Season Landowner Permit draw. Vouchers may only be redeemed by the Landowner or Immediate Family members~~]- Private Land Only Buck Deer program.

(2) An Applicant must meet the following eligibility criteria to apply for or obtain [~~permits~~]vouchers under the General Season Landowner Program for a Private Land Buck Deer Voucher:

(a) own the minimum quantity of Eligible Property in the proper general season unit boundaries as identified in this rule;

(b) be able to lawfully obtain and use a hunting license and big game permit;

(c) submit a complete application by the deadline; and

(d) pay necessary fees.

(3) An Applicant may apply for General Season Landowner - Private Land Only-Buck Deer Vouchers according to the following limitations:

(a) one General Season Landowner - Private Land Only-Buck Deer Voucher may be issued for 640 acres of Eligible Property owned or leased by the Applicant;

(b) one additional General Season Landowner - Private Land Only-Buck Deer Voucher may be issued for each additional 640 acres of Eligible Property owned or leased by the Applicant.

(4) General Season Landowner - Private Land Only Buck Deer Vouchers may be transferred or sold.

(5) Any remaining permits for the General Season Landowner - Private Land Only Buck Deer Vouchers may be issued to qualifying landowners over-the-counter at the same time the other over-the-counter big game permits go on sale.

R657-43-4. General Season Landowner Program - Private Land Buck Deer Vouchers -- Applications and Permit Use.

(1) Qualifier Applications for General Season Landowner - Private Land Only Buck Deer Vouchers are available from division offices and on the division website before the draw.

(2)(a) Only one Applicant may submit a Qualifier Application for a parcel of Private Land.

(b) The division may reject all Qualifier Applications if more than one application is received for the same parcel of Private Land.

(c) A Landowner may only submit one Qualifier Application, regardless of whether there are:

(i) multiple individual persons owning the Eligible Property;

(ii) multiple Legal Entity Owners in the Legal Entity owning the Eligible Property; or

(iii) similar instances of split ownership of the Eligible Property.

(3) Qualifier Applications for General Season Landowner - Private Land Only Buck Deer Vouchers must include:

(a) total acres of Eligible Property within the respective general season unit hunt boundary area;

(b) the signature of all Landowners having an interest in the Eligible Property; and

(c) a digital map of the Eligible Property indicating the parcel numbers, county, and general season hunt unit within which it is located.

(4) Qualifier Applications must be submitted to the regional division office with management responsibilities where the Eligible Property is located.

(5) Vouchers will be issued on a first come, first serve basis when over-the-counter permits go on sale.

(6) The Applicant will select the season and weapon type when issued the voucher.

(7) Any person issued a General Season Landowner - Private Land Only Buck Deer Permit under this rule is subject to all season dates, weapon restrictions, and any other regulations, specifically Rule R657-5, and fees as provided in the guidebook of the Wildlife Board for taking big game.

(8) General Season Landowner - Private Land Only Buck Deer Permits are only valid on private property in the unit in accordance with Sections 23A-5-310 and 23A-5-317.

(9) A General Season Landowner - Private Land Only Buck Deer Permit may be used to hunt the entirety of the Landowner's adjoining Private Land even when the Landowner's Private Land is in more than one general unit hunt boundary area.

R657-43-5. General Season Landowner Program - Unit Wide Buck Deer Permits – Availability and Eligibility.

(1)(a) The division will establish the number of General Season Landowner - Unit Wide Buck Deer Permits annually by identifying the number of public draw permits available in a unit and allocate an additional 3% of that number to the program.

(b) Vouchers for General Season Landowner - Unit Wide Buck Deer Permits will be issued through the General Season Landowner Permit draw.

(c) Vouchers for General Season Landowner - Unit Wide Buck Deer Permits may only be redeemed by the Landowner or Immediate Family members.

(2) An Applicant must meet the following eligibility criteria to apply for or obtain permits under the General Season Landowner - Unit Wide Buck Deer Permit program:

(a) own the minimum quantity of Eligible Property in the proper general season unit boundaries as identified in this rule;

(b) be able to lawfully obtain and use a hunting license and big game permit;

(c) submit a complete application by the deadline;

(d) participate in the General Season Landowner - Unit Wide Buck Deer Permit drawing; and

(e) pay necessary fees.

(3)(a) An Applicant may apply for General Season Landowner - Unit Wide Buck Deer Permits according to the following limitations:

(i) One General Season Landowner - Unit Wide Buck Deer Permit may be issued for 640 acres of Eligible Property owned or leased, for agricultural purposes, by the Applicant; or

(ii) One General Season Landowner - Unit Wide Buck Deer Permit may be issued for 100 acres or more of Cropland owned or leased, for agricultural purposes, by the Applicant.

~~(i) One additional General Season Landowner - Unit Wide Buck Deer Permit may be issued for each additional 640 acres of Eligible Property owned or leased, for agricultural purposes, by the Applicant;~~

~~(ii) one additional General Season Landowner Permit may be issued for each additional 640 acres of Eligible Property owned or leased by the Applicant;] and~~

~~(iii) one General Season Landowner Permit may be issued for 100 acres or more of Cropland owned or leased by the Applicant.]~~

~~(b)~~

(ii) Only one General Season Landowner - Unit Wide Buck Deer Permit may be issued to a Landowner based on Cropland acreage, regardless of whether that Applicant owns or leases for agricultural purposes more than 100 acres of Cropland.

~~(c) Only one General Season Landowner Permit may be issued per parcel of Eligible Property.]~~

(d) General Season Landowner - Unit Wide Buck Deer Permits cannot be sold and may only be transferred to Immediate Family members.

(e) An Applicant may apply for and receive a maximum of five General Season Landowner - Unit Wide Buck Deer Permits in a single hunt year.

(4) Vouchers for General Season Landowner - Unit Wide Buck Deer Permits will be issued following the draw and ~~are valid for~~ may only be claimed by the Landowners and their Immediate Family members.

(5) Remaining General Season Landowner - Unit Wide Buck Deer Permits may be issued to qualifying landowners over-the-counter at the same time the other over-the-counter big game permits go on sale.

R~~657-43-4~~657-43-6. General Season Landowner Program - Unit Wide Buck Deer Permits – Applications, Drawing, and Permit Use.

(1) Qualifier Applications for General Season Landowner - Unit Wide Buck Deer Permits are available from division offices and on the division website before the draw.

(2)(a) Only one Applicant may submit a Qualifier Application for ~~the same~~ a parcel of Private Land.

(b) The division may reject all Qualifier Applications if more than one application is received for the same parcel of Private Land.

(c) Where the Landowner's Private Land is in more than one general unit hunt boundary area, the Landowner may select only one of those units from which to receive the Permit.

(d) A Landowner may only submit one Qualifier Application, regardless of whether there are:

(i) multiple individual persons owning the Eligible Property;

(ii) multiple Legal Entity Owners in the Legal Entity owning the Eligible Property; or

(iii) similar instances of split ownership of the Eligible Property.

(3) Qualifier Applications for General Season Landowner Permits must include:

(a) total acres of Eligible Property within the respective general season unit hunt boundary area;

(b) the signature of all Landowners having an interest in the Eligible Property; and

(c) a digital map of the Eligible Property indicating the parcel numbers, county, and general season hunt unit within which it is located[;].

(4) Qualifier Applications must be submitted to the regional division office with management responsibilities where the Eligible Property is located.

(5) The signatures of the Landowners on the Draw Application serve as an affidavit by such Landowner certifying ownership of the Eligible Property enrolled.

(6)[(a)-] After Qualifier Applications are reviewed and approved, Draw Applications will be submitted pursuant to Section R657-62-27.

~~[(b) When submitting the Draw Application, the Applicant will select the season and weapon type]7) Any person issued a General Season Landowner - Unit Wide Buck Deer Permit under this rule is subject to all season dates, weapon restrictions, and any other regulations, specifically Rule R657-5, and fees as provided in the guidebook of the Wildlife Board for taking big game.~~

~~[(7)8] [-Any person issued a]A General Season Landowner - Unit Wide Buck Deer Permit is valid unit wide under [this rule is subject to all]the same season dates[-, weapon restrictions, and any other regulations, specifically Rule R657-5, and fees as provided in the guidebook of the Wildlife Board for taking big game.]~~
~~[R657-43-5. Limited Entry Landowner Permits -- Availability and Eligibility.] and unit boundary as a general draw buck deer permit would be.~~

(9) Individuals that obtain a General Season Landowner - Unit Wide Buck Deer Permit must choose a weapon type/season for their permit when redeeming a General Season Landowner - Unit Wide Buck Deer Permit.

R657-43-7. Limited Entry Landowner Program - Permit Vouchers for Lands not Participating in a Landowner Association -- Availability and Eligibility.

(1) The division shall establish the number of Limited Entry Landowner Program Permit Vouchers for private lands not enrolled in a Landowner Association for buck deer, bull elk, and buck pronghorn annually by:

(a) identifying the number of public draw limited entry permits available in a unit; and

(b) allocating up to an additional 5%, by weapon type, of that number to the program.

(2) Vouchers for Limited Entry Landowner Program Permits for lands not participating in a Landowner Association will be issued through the Limited Entry Landowner Program Permit Voucher draw.

(3) An Applicant must meet the following eligibility criteria to apply for or obtain permits under the Limited Entry Landowner Program:

(a) own the minimum quantity of Eligible Property in the proper Limited Entry unit boundaries as identified in this rule;

(b) be able to lawfully obtain and use a hunting license and big game permit;

(c) submit a complete application by the deadline;

(d) participate in the Limited Entry Landowner Permit drawing; and

(e) pay necessary fees.

(4) An Applicant may apply for Limited Entry Landowner Permit Vouchers according to the following limitations:

(a) A minimum of 640 acres of Eligible Property is required to submit an application;

(b) Only one Limited Entry Landowner Program Permit may be issued per parcel of Eligible Property; and

(c) An Applicant may apply for and receive a maximum of one Limited Entry Landowner Program Permit Vouchers in a single hunt year.

(5) A landowner or lessee transferring a permit voucher to another individual may not receive any form of compensation or remuneration for the transfer or for allowing access to the private land for hunting on a permit redeemed with that voucher on the landowner or lessee's eligible property.

R657-43-8. Limited Entry Landowner Program - Permit Vouchers for Lands not Participating in a Landowner Association, -- Drawing, and Permit Use.

(1) Qualifier Applications for Limited Entry Landowner Program Permit Vouchers are available from division offices and on the division website before the draw.

(2)(a) Only one Applicant may submit a Qualifier Application for a parcel of Private Land.

(b) The division may reject all Qualifier Applications if more than one application is received for the same parcel of Private Land.

(c) A Landowner may only submit one Qualifier Application, regardless of whether there are:

(i) multiple individual persons owning the Eligible Property;

(ii) multiple Legal Entity Owners in the Legal Entity owning the Eligible Property; or

(iii) similar instances of split ownership of the Eligible Property.

(3) Qualifier Applications for Limited Entry Landowner Permits must include:

(a) total acres of Eligible Property within the respective Limited Entry unit hunt boundary area;

(b) the signature of all Landowners having an interest in the Eligible Property; and

(c) a digital map of the Eligible Property indicating the parcel numbers, county, and limited entry hunt unit within which it is located.

(4) Qualifier Applications must be submitted to the regional division office with management responsibilities where the Eligible Property is located.

(5) The signatures of the Landowners on the Draw Application serve as an affidavit by such Landowner certifying ownership of the Eligible Property in the Qualifier Application.

(6) After Qualifier Applications are reviewed and approved, Draw Applications will be submitted pursuant to Section R657-62-27.

(7) Any person issued a Limited Entry Landowner Program Permit under this rule is subject to all season dates, weapon restrictions, and any other regulations, specifically Rule R657-5, and fees as provided in the guidebook of the Wildlife Board for taking big game.

(8) Limited Entry Landowner Program Permit Vouchers are not valid for:

(a) multi-season hunting opportunities;

(b) public land;

(c) private land outside of the property for which the application was submitted for; and

(d) late season limited entry buck deer permits on a general season unit.

R657-43-9. Limited Entry Landowner Association Program Permit Vouchers -- Availability and Eligibility.

(1) (a) Landowners in a limited entry unit may join together to form a Landowner Association for participation in the Limited Entry Landowner Association Permit program.

(b) To qualify as a Landowner Association, participating Landowners must:

(~~a~~)i own more than 50% of the Private Lands that are Eligible Property within the limited entry herd unit;

(~~b~~)ii form a Landowner Association;

(~~e~~)iii limit participation to Private Lands within a limited entry hunt unit serving as habitat for that species; and

(~~d~~)iv the president of the Landowner Association must participate in a division training annually.

(2) The division will establish the number of [~~limited entry permits~~]Limited Entry Landowner Association Program Permits available[~~under the program~~] on an annual basis by:

(a) identifying the number of public draw permits in a unit for the previous hunt year;

(b) identifying the total acreage of Private Land in a unit enrolled in the Landowner Association;

(c) calculating the percentage of habitat in the unit represented by the Landowner Association by dividing the habitat acreage represented by the Landowner Association by the habitat acreage in the whole unit;

(d) applying that percentage to the total number of available public draw permits from the previous year to determine the number of [~~permits~~]Limited Entry Landowner Association Program Permit Vouchers to be allocated to the Landowner Association;

(e) applying standard rounding will be practiced when determining permit numbers - .49 rounds down and .5 rounds up; and

(f) an approved Landowner Association that qualifies for less than one permit voucher every year will receive one permit voucher the first year after approval.

(3) To form a Landowner Association, Landowners must:

(a) elect a president;

(b) enter into Governing Documents signed by all participating Landowners that:

(i) agree to the formation of a Landowner Association for the purposes of participating in the program;

(ii) establish membership qualifications;

(iii) identify any yearly dues, if any, necessary to participate and how those funds will be utilized;

(iv) establish a distribution plan for allocating Vouchers or revenue from Vouchers to members;

(v) describe the process for adding and removing members in a fair and impartial process;

(vi) describe how the Landowner Association will provide notice of upcoming meetings and how members can participate;

(vii) establish how voting and decisions on behalf of the Landowner Association will be made;

(viii) establish rules and guidelines outlining permit holder conduct on Landowner Association property;

(ix) describe how the Landowner Association will complete compliance requirements for the program;

(x) describe how the members will elect a president to represent the landowner association and the president's length of term;

(xi) include a written waiver from each participating Landowner of all depredation claims due to big game damage during the term of such Landowner's membership in the Landowner Association;

(xii) If option 1 (see R657-43-9-5-a) is chosen include a written agreement from each participating member to allow free public access onto all participating Landowner's Private Lands as required by Subsections R657-43-5(5) and R657-43-5(6); and

(~~iii~~)xiii other items deemed necessary and appropriate to administer the Landowner Association.

(4) Limitations on the eligibility of Private Lands in Landowner Associations:

- (a) ~~[private lands]~~ Private Lands enrolled in a Cooperative Wildlife Management Unit for the same species are not eligible to participate in a Landowner Association under this rule;
- (b) ~~[public]~~ Public and state lands are not eligible to be included in a Landowner Association;
- (c) ~~[only]~~ Only Private Lands that qualify as Eligible Property will be considered for Limited Entry Landowner

Permits;

- (d) ~~[only]~~ Only one Landowner Association, per species, may be formed for each limited entry unit; and
- (e) ~~[a]~~ A Landowner or Landowner Association may not restrict legally established passage through Private Land to access public lands for hunting.
- (5) A Landowner Association may choose one of two Voucher options during the term of its certificate of registration:
 - (a) Option 1~~[-]~~:
 - (i) The Landowner Association will be issued Vouchers valid for the entire limited entry hunting unit;
 - (ii) an equivalent number of public hunters to the number of Vouchers received by the Landowner Association shall be provided complete access to hunt all of the Landowner Association's Private Lands at no charge for the species during the season dates identified on the Limited Entry Landowner Association Permit; and
 - (iii) the division will notify the lowest draw numbers of public hunters in that unit who will be given access to the Landowner Association's Private Lands pursuant to this section.

- (b) Option 2~~[-]~~:

(i) The Landowner Association will be issued Vouchers valid only for Private Lands enrolled in the Landowner Association;

- (ii) the number of Vouchers allocated to a Landowner Association will be ~~[initially-]~~ calculated using the formula in Subsection (2), ~~[then reduced by 20%-]~~ rounded up to the nearest whole number~~[-]~~;
- ~~[(iii) an equivalent number of public hunters to the number of Vouchers reduced by 20%, rounded up to the nearest whole number shall be provided complete access to hunt all Landowner Association's Private Lands at no charge for the species and during the season dates identified on the limited entry permit; and]~~

~~[(iv) the division will notify the lowest draw numbers of public hunters in that unit who will be given access to]~~

(c) Limited Entry Landowner Association Program Permit Vouchers are not valid for:

(i) multi-season hunting opportunities;

(ii) any public land;

(iii) private land not enrolled in the Landowner Association~~[-s Private Lands pursuant to this section.]; or~~

~~[(e) Vouchers are not valid for:]~~

~~[(i) multi-season hunting opportunities; or]~~

~~[(ii)]~~

(iv) late season limited entry buck deer permits on a general season unit.

(6)(a)~~[(i)-]~~ Public draw permit holders specified in Subsection (5)(a) will have access to all enrolled Landowner Association lands for the entirety of the hunt~~[-]~~.

~~[(ii)b]~~~~[-the]~~(i) The Landowner Association will be responsible for ensuring those public draw permit holders identified in paragraph (5)(a) above are given access to all private lands; and

~~[(iii)]~~ii Landowner Associations may determine how to disperse public hunters by seasons. If all public hunters are in one season it will be the any-weapon season.

~~[(b)]~~c The Landowner Association must provide a written copy of its guidelines used to regulate a permit holder's conduct as a guest on the Landowner Association land. These guidelines will go through the RAC and Wildlife Board process to ensure they are fair and reasonable.

(7) Performance metrics will be established by the division, with recommendations from the Landowner Association Advisory Committee, to determine if the purposes of the program are being met.

R[~~657-43-6~~657-43-10. Limited Entry Landowner Association Program Permits -- Application.

(1) Applications for a limited entry Landowner Association certificate of registration are available at division offices and on the division website.

(2) Applications must include:

- (a) total acres providing habitat for the species in question that are participating in the Landowner Association;
- (b) signature of each of the Landowners within the Landowner Association including acres owned, with said signature serving as an affidavit certifying ownership;
- (c) a copy of the Landowner Association's Governing Documents;
- (d) a digital map of the Private Lands participating in the Landowner Association and indicating the Private Lands which serve as habitat for the species in question; and
- (e) a non-refundable handling fee.

(3) The division may aid the Landowner Association in preparing the application, but the division is not responsible for errors in the application or a failure to properly or completely submit an application.

(4) Applications must be completed and submitted to the regional division office managing the limited entry hunting unit where the Landowner Association is located by September 1 of the year before the hunting is to occur.

(5) The division shall review the application and determine its completeness and formulate a recommendation~~[-]~~;

(a) the division may reject any application that is incomplete or completed incorrectly; and

(b) applicants must notify the division in writing regarding any changes to the substance of their application while it is under consideration, or it may be considered incomplete or incorrect.

(6) After evaluating the application, the Wildlife Board shall consider:

- (a) the contents of the application;
- (b) the division's recommendation; and

(c) any violations of Title 23A, [the Wildlife Resources \[Code\] Act](#), by the Landowner Association, its operator, its president, or any of its members that would reasonably influence whether the applicant should be approved to participate in the program.

(7) Upon receiving the application and recommendation from the division, the Wildlife Board may:

- (a) authorize the issuance of a three-year certificate of registration allowing the Landowner Association to operate; or
- (b) deny or partially deny the application and provide the Landowner Association with reasons for the decision.

(8)(a) The certificate of registration for a Landowner Association must be renewed every three years through the process outlined in this rule.

(b) In evaluating a certificate of registration renewal application, the Wildlife Board shall consider:

(i) the Landowner Association's fulfillment of public access requirements, [if applicable](#), during the term of the prior certificate of registration;

(ii) the Landowner Association's fulfillment of antlerless harvest access and success, if a condition of its prior certificate of registration;

(iii) the contents of its renewal application; and

(iv) a recommendation provided by the division.

(9) The Wildlife Board may deny a certificate of registration application or renewal application if:

(a) the Landowner Association has failed to supply the necessary documentation specified in [\[Subsection\]Section R657-43-6](#);

(b) a member of the Landowner Association has been convicted of a wildlife violation;

(c) the president of the Landowner Association has engaged in conduct that results in the conviction of, a plea of no contest to, or a plea held in abeyance to a crime of moral turpitude, or any other crime that when considered with the functions and responsibilities of a Landowner Association president bears a reasonable relationship to their ability to responsibly operate a Landowner Association;

(d) the Landowner Association has failed to abide by the terms of their Governing Documents in a manner that undermines the purposes of the program; or

(e) the Landowner Association's president or its designee fails to complete mandatory annual training.

(10)(a) An applicant may appeal a denial of an application, renewal application, or request for certificate of registration amendment by submitting an appeal to the division Director.

(b) An appeal must be submitted to the division within 30 days of receiving the notice of denial.

(11) (a) If a Landowner Association is cited for violating this rule, Title 23A, [the Wildlife Resources Act](#), or any other proclamation or guidebook by the Wildlife Board, the [\[Division\]division](#) may suspend or revoke the Landowner Association certificate of registration pursuant to Rule R657-26; and

(~~a~~) (b) if an individual landowner who is part of a Landowner Association violates this rule, Title 23A, [the Wildlife Resources Act](#), or any other proclamation or guidebook by the Wildlife Board, the [\[Division\]division](#) may remove the individual landowner from the Landowner Association's certificate of registration pursuant to Rule R657-26.

(12)(a) The division shall annually review the permit types, numbers, and seasons authorized by a certificate of registration issued under this section and implement modifications for the following hunt season.

(b) Landowner Associations and the [\[Division\]division](#) will work cooperatively to achieve desired management directives, including antlerless management objectives.

(13)(a) A Landowner Association may petition to amend a certificate of registration upon submitting a written request to the regional division office where the Landowner Association's Private Land is located; and

(b) A Landowner Association shall submit an application to amend their certificate of registration for changes in:

- (i) the Landowner Association's Governing Documents; or
- (ii) acreage;

(A) ~~if~~ If during a term of its certificate of registration, a Landowner Association's Eligible Property decreases but remains at least equal to 50% of the Eligible Property in the limited entry unit, such Landowner Association shall submit an amendment outlining the new acreage to update their current certificate of registration; or

(B) if during a term of its certificate of registration, a Landowner Association's Eligible Property decreases and equals less than 50% of the Eligible Property in the limited entry unit, such Landowner Association's certificate of registration shall be deemed non-compliant and shall terminate at the end of the certificate of registration's term; provided, however, such Landowner Association may reapply for a certificate of registration as a new application.

(iii) Private Land ownership; or

(iv) any other matter related to the management and operation of the Landowner Association not originally included in the certificate of registration.

(c) If approved, an amendment to the certificate of registration shall be issued in writing.

(14)(a) Upon approval of the certificate of registration, [Limited Entry Landowner Association Program Permit](#) Vouchers may be issued and redeemed to purchase Limited Entry Landowner Permits from division offices.

(b) The fee for any Limited Entry Landowner [Association Program](#) Permit is the same as the cost of similar limited entry buck deer, bull elk, or buck pronghorn limited entry permits.

(c) A Landowner receiving a Voucher for a Limited Entry Landowner Permit may sell or otherwise transfer such Voucher to any legal hunter so long as that person possesses or obtains a Utah hunting or combination license.

(d) Any recipient of a Limited Entry Landowner [Association Program](#) Permit must follow the season dates, weapon restrictions, and any other regulation governing the taking of big game as specified in Rule R657-5 and the guidebook of the Wildlife Board for taking big game.

(e) Nothing in this rule permits the take of more than one buck deer, one bull elk, or one buck pronghorn during any one year.

R[~~657-43-7~~][657-43-11](#). Landowner Association Advisory Committee.

(1) A Landowner Association Advisory Committee shall be created consisting of seven members nominated by the director and approved by the Wildlife Board.

(2) The committee shall include:

(a) two sportsmen representatives;

(b) two landowner representatives;

(c) one agriculture representative;

(d) one at large public representative; and

(e) one Regional Advisory Council chairperson or member.

(3) The committee shall be chaired by the Wildlife Section Chief, or their designee, and shall be a non-voting member.

(4) The committee shall:

(a) hear complaints dealing with fair and equitable treatment of hunters on Landowner Association lands;

(b) review the operation of the Landowner Association program; and

(c) make advisory recommendations to the director and Wildlife Board on the matters in Subsections (a)[~~-(b), (c), (d),~~]

and (~~e~~)b).

(5)(a) The committee may, after hearing evidence of complaints or violations, place a Landowner Association on probation.

(b) A Landowner Association placed on probation status must provide the Landowner Association Advisory Committee a plan of corrective action to address concerns regarding operation of the Landowner Association, and report annually to the Landowner Association Committee during the probationary period regarding their progress in addressing such concerns.

(c) The Landowner Association Advisory Committee shall report to the Wildlife Board any Landowner Association that remains on probation during a certificate of registration renewal process.

(6) The Wildlife Section Chief shall determine the agenda, time, and location of the meetings.

(7) The director shall set [~~staggered~~][staggered](#) terms of appointment of members such that there is rotating representation and that all committee members' terms shall expire after four years.

KEY: wildlife, landowner permits, big game seasons

Date of Last Change: [~~October 1~~][December 8](#), [~~2023~~][2022](#)

Notice of Continuation: February 1, 2022

Authorizing, and Implemented or Interpreted Law: 23A-2-304; 23A-2-305

R657. Natural Resources, Wildlife Resources.

R657-62. Drawing Application Procedures.

R657-62-1. Purpose and Authority.

(1) Under authority of Sections 23A-2-304 and 23A-2-305, the Wildlife Board has established this rule for drawing applications and procedures.

(2) Specific season dates, bag and possession limits, areas open, number of permits and other administrative details that may change annually are published in the respective guidebooks of the Wildlife Board.

R657-62-27. Unit Wide Landowner Buck Deer Permits.

(1)(a) The division will evaluate draw applications and calculate the number of general season hunting opportunities the landowner qualifies for per Rule R657-43.

(b) The applicant will be charged a handling fee for every draw application, up to 5, that is entered into the drawing.

(c) The division will issue vouchers to the landowner based on the drawing results.

(d) The division is not responsible for identifying recipients of the vouchers after vouchers are awarded to a landowner by the drawing process.

(2) For an individual to redeem the drawn voucher, they must:

(a)(i) be the landowner, an immediate family member, or lessee. If the Applicant is a business entity, the person eligible for the permit must be a shareholder, or immediate family member of a shareholder, as designated by the business entity; and

(ii) non-shareholder employees of the business entity are not eligible to receive a general season landowner permit;

(b) possess or obtain a valid hunting or combination license;

(c) meet all age requirements, proof of hunter education requirements and youth restrictions as provided in Rule R657-5; and

(d) not already obtained a buck deer permit per Section R657-62-18.

(3) Any permits remaining after the drawing are available at division offices on a first come, first serve basis.

R657-62-28. Limited Entry Landowner Program – Lands not Participating in a Landowner Association.

(1) Permit applications.

(a) A person must possess or obtain a valid hunting or combination license to apply for or obtain a limited entry landowner permit.

(b) Applicants must meet all age requirements, proof of hunter education requirements and youth restrictions as provided in Rule R657-5.

(c) Applicants must meet the requirements pursuant to Rule R657-43 to be able to submit a draw application.

(d) The applicant will be charged a handling fee to be entered into the drawing.

(e) Applicants will select the season and weapon type for their application.

(i) The division will calculate the number of limited entry hunting opportunities qualified for per Rule R657-43.

(ii) Voucher allocation will be broken up by season and weapon type within that unit.

(2) A random drawing or selection process must be conducted for each limited entry permit.

(3) Bonus points are neither awarded nor applied in this drawing.

(4) Waiting periods do not apply.

(5) The division will issue voucher to the landowner based on the drawing results.

(a) The division is not responsible for identifying recipients of the vouchers after vouchers are awarded to a landowner by the drawing process.

(b) A landowner or lessee transferring a permit voucher to another individual may not receive any form of compensation or remuneration for the transfer or for allowing access to the private land for hunting on a permit redeemed with that voucher on the landowner or lessee's eligible property

(c) A person may obtain only one permit per species of big game, including limited-entry, cooperative wildlife management unit, once-in-a-lifetime, conservation, landowner and general permits, except antlerless permits as provided in the Antlerless Addendum and permits as provided in Rule R657-42.

(6) Any permits remaining after the drawing are available at division offices on a first-come, first-served basis.

KEY: wildlife, permits

Date of Last Change: October 1, 2023

Notice of Continuation: April 9, 2019

Authorizing, and Implemented or Interpreted Law: 23A-2-304; 23A-2-305



SPENCER J. COX
Governor

DIEDRE M. HENDERSON
Lieutenant Governor

State of Utah

DEPARTMENT OF NATURAL RESOURCES

JOEL FERRY
Executive Director

Division of Wildlife Resources

J. SHIRLEY
Division Director

MEMORANDUM

TO: Wildlife Board and Regional Advisory Council Members

FROM: Chad Wilson, Private Lands/Public Wildlife Coordinator

DATE: Oct 20, 2023

SUBJECT: 2024 Cooperative Wildlife Management Unit (CWMU) and Landowner Association (LOA) permit recommendations

The following is a summary of the 2023 CWMU recommendations for bucks and bulls. There are three types of applications the DWR receives for CWMUs: new, renewal and change applications.

The DWR received **93** CWMU applications for 2024 and recommends the approval of:

- 78 renewal applications
- 7 new applications
- 8 change applications that require RAC/Board approval

There will be a total of 132 CWMUs for the 2024 hunting season, based on the DWR’s recommendations. The following table summarizes the recommended number of CWMU permits statewide for bucks, bulls and turkeys that need approval:

| Species | Private | Public |
|----------------|--------------|------------|
| Bull elk | 682 | 99 |
| Buck pronghorn | 49 | 37 |
| Buck deer | 1,094 | 151 |
| Bull moose | 23 | 21 |
| Total | 1,848 | 308 |



The following is a summary of the DWR's 2024 LOA recommendations for bucks and bulls.

- 13 renewal applications. 12 for option 1 and 1 for option 2.

CW

| LOA NAME | HUNT AREA | SPECIES | Acres of habitat in unit | Acres of private land in unit | Acres in the LOA | % in LOA | % of LOA land to total habitat | Contact Name |
|--------------------------------|----------------------------|-----------|--------------------------|-------------------------------|------------------|----------|--------------------------------|----------------------|
| Elk Ridge LOA | San Juan, Elk Ridge | Deer | 986,726 | 4,640 | 3,748 | 80.78% | 0.38% | Val Hurst |
| Henry Mountain Deer LOA | Henry Mtns | Prem Deer | 811,864 | 10,169 | 6,435 | 63.28% | 0.79% | Gordon VanDyke |
| Indian Peaks LOA | Southwest Desert, South | Elk | 789,140 | 43,416 | 24,831 | 57.19% | 3.15% | Gary Gardner |
| Monroe Mountain LOA | Monroe | Elk | 303,255 | 25,222 | 15,575 | 61.75% | 5.14% | Randy Gleave Lawyer |
| Pahvant Mountain LOA | Fillmore, Pahvant | Elk | 372,663 | 39,769 | 20,054 | 50.43% | 5.38% | Christopher Robinson |
| Panguitch Lake LOA | Panguitch Lake | Elk | 441,055 | 46,168 | 36,275 | 78.57% | 8.22% | Michael L Tebbs |
| Paunsaugunt LOA | Paunsaugunt | Prem Deer | 817,508 | 73,272 | 46,437 | 63.38% | 5.68% | Robert J Ott |
| Paunsaugunt LOA | Paunsaugunt | Mgmt Deer | 817,508 | 73,272 | 46,437 | 63.38% | 5.68% | Robert J Ott |
| Pilot Mountain LOA | Box Elder, Pilot Mtn | Elk | 54,357 | 7,155 | 5,722 | 79.97% | 10.53% | Dale Christiansen |
| San Juan Elk LOA | San Juan, Bull Elk | Elk | 671,406 | 57,200 | 33,464 | 58.50% | 4.98% | Preston L Grover |
| South Fork of Sevier River LOA | Mt Dutton/Paunsaugunt | Pronghorn | 161,246 | 22,070 | 16,429 | 74.44% | 10.19% | James D Perkins Jr |
| Three Corners LOA | North Slope, Three Corners | Elk | 105,914 | 6,944 | 3,920 | 56.45% | 3.70% | Mark Dickinson |
| Vernon LOA | West Desert, Vernon | Deer | 413,173 | 90,264 | 56,036 | 62.08% | 13.56% | Robert Gowans |

| LOA NAME | HUNT AREA | SPECIES | Acres of habitat in unit | Acres of private land in unit | Acres in the LOA | % in LOA | % of LOA land to total habitat | Contact Name |
|----------------------|--------------------------|---------|--------------------------|-------------------------------|------------------|----------|--------------------------------|--------------|
| Diamond Mountain LOA | South Slope, Diamond Mtn | Deer | 240,028 | 84,010 | 70,943 | 84.45% | 29.56% | Dave Chivers |
| Diamond Mountain LOA | South Slope, Diamond Mtn | Elk | 240,028 | 84,010 | 70,943 | 84.45% | 29.56% | Dave Chivers |



SPENCER J. COX
Governor

DIEDRE M. HENDERSON
Lieutenant Governor

State of Utah

DEPARTMENT OF NATURAL RESOURCES

JOEL FERRY
Executive Director

Division of Wildlife Resources

J. SHIRLEY
Division Director

MEMORANDUM

TO: Wildlife Board and Regional Advisory Council Members

FROM: Chad Wilson, Private Lands/Public Wildlife Coordinator

DATE: Oct 20, 2023

SUBJECT: 2024 Cooperative Wildlife Management Unit (CWMU) and Landowner Association (LOA) permit recommendations

The following is a summary of the 2023 CWMU recommendations for bucks and bulls. There are three types of applications the DWR receives for CWMUs: new, renewal and change applications.

The DWR received **93** CWMU applications for 2024 and recommends the approval of:

- 78 renewal applications
- 7 new applications
- 8 change applications that require RAC/Board approval

There will be a total of 132 CWMUs for the 2024 hunting season, based on the DWR’s recommendations. The following table summarizes the recommended number of CWMU permits statewide for bucks, bulls and turkeys that need approval:

| Species | Private | Public |
|----------------|--------------|------------|
| Bull elk | 682 | 99 |
| Buck pronghorn | 49 | 37 |
| Buck deer | 1,094 | 151 |
| Bull moose | 23 | 21 |
| Total | 1,848 | 308 |



The following is a summary of the DWR's 2024 LOA recommendations for bucks and bulls.

- 13 renewal applications. 12 for option 1 and 1 for option 2.

CW

| Region | CWMU | Species | Sex | Priv 2024 | Pub 2024 | Rec Hunt Date | Rec Ratio | Acres Private | Acres Priv Change | Acres Public | Acres Pub Change | Satisfaction 2022 | Satisfaction 2021 | Satisfaction 2020 |
|--------|--------------------|-----------|------------|-----------|----------|---------------|-----------|---------------|-------------------|--------------|------------------|-------------------|-------------------|-------------------|
| CRO | Bear Mountain | Deer | BUCK | 9 | 1 | 09/11 - 11/10 | 90:10 | 8900 | | 0 | | 4.86 | 4.2 | 4.4 |
| CRO | Bear Mountain | Elk | Antlerless | 0 | 20 | 08/01 - 01/31 | 0:100 | 8900 | | 0 | | 3.25 | 3.7 | 3.4 |
| CRO | Bear Mountain | Elk | Bull | 6 | 1 | 09/01 - 10/31 | 90:10 | 8900 | | 0 | | 4.83 | 4.3 | 2.4 |
| CRO | Double R Ranch | Deer | BUCK | 9 | 1 | 09/11 - 11/10 | 90:10 | 12242 | | 0 | | 4.43 | 4.5 | 4.4 |
| CRO | Double R Ranch | Elk | Antlerless | 0 | 10 | 08/01 - 01/31 | 0:100 | 12242 | | 0 | | NA | NA | NA |
| CRO | Double R Ranch | Elk | Bull | 9 | 1 | 09/01 - 10/31 | 90:10 | 12242 | | 0 | | 4.88 | 4.7 | 4.5 |
| CRO | Heaston East | Deer | BUCK | 18 | 2 | 09/11 - 11/10 | 90:10 | 63965 | 62,971 | 0 | | 4.61 | 4.9 | 4.8 |
| CRO | Heaston East | Elk | Antlerless | 0 | 24 | 08/01 - 01/31 | 0:100 | 63965 | | 0 | | 5 | 4.8 | 4.8 |
| CRO | Heaston East | Elk | Bull | 18 | 2 | 09/01 - 10/31 | 90:10 | 63965 | | 0 | | 4.58 | 4.8 | 4.4 |
| CRO | Skull Valley South | Deer | Buck | 9 | 1 | 09/11 - 11/10 | 90:10 | 60813 | | 0 | | 2.5 | 4.5 | 3 |
| CRO | Skull Valley South | Pronghorn | Buck | 3 | 2 | 09/01 - 10/31 | 60:40 | 60813 | | 0 | | 4.25 | 3.8 | 4.3 |
| CRO | Three C | Deer | Buck | 18 | 2 | 09/11 - 11/10 | 90:10 | 14676 | 14,848 | 0 | | 4.56 | 4.4 | 4.5 |
| CRO | Three C | Elk | Antlerless | 8 | 12 | 08/01 - 01/31 | 40:60 | 14676 | | 0 | | 4.14 | 4.2 | 4.7 |
| CRO | Three C | Elk | Bull | 8 | 2 | 09/01 - 10/31 | 80:20 | 14676 | | 0 | | 4.78 | 4.6 | 4.5 |
| CRO | Three C | Moose | Bull | 1 | 1 | 09/01 - 10/31 | 60:40 | 14676 | | 0 | | 5 | 5 | 4 |
| CRO | Wallsburg | Deer | BUCK | 9 | 1 | 09/11 - 11/10 | 90:10 | 11278 | | 0 | | 4.83 | 3.4 | 3.3 |
| CRO | Wallsburg | Elk | Antlerless | 0 | 10 | 08/01 - 01/31 | 0:100 | 11278 | | 0 | | 2.25 | 3.5 | 4.3 |
| CRO | Wallsburg | Elk | Bull | 9 | 1 | 09/01 - 10/31 | 90:10 | 11278 | | 0 | | 4.3 | 4.7 | 4.8 |
| CRO | Wallsburg | Moose | Bull | 1 | 0 | 09/01 - 10/31 | 60:40 | 11278 | | 0 | | 4 | 5 | 5 |
| CRO | Westlake | Pronghorn | 2 Doe | 4 | 6 | 09/01 - 10/31 | 40:60 | 18717.37 | | 0 | | 4.86 | 4.6 | 5 |
| CRO | Westlake | Pronghorn | Buck | 4 | 3 | 09/01 - 10/31 | 60:40 | 18717.37 | | 0 | | 4.57 | 5 | 5 |
| NERO | Antelope Creek | Deer | Buck | 2 | 1 | 9/01 - 10/31 | 90:10 | 21252 | 19,411 | 0 | | 3 | 2.3 | 4.3 |
| NERO | Antelope Creek | Pronghorn | Buck | 6 | 4 | 09/01 - 10/31 | 60:40 | 21252 | | 0 | | 4.6 | 4.7 | 4.8 |
| NERO | Antelope Creek | Pronghorn | Doe | 4 | 6 | 09/01 - 10/31 | 40:60 | 21252 | | 0 | | 4.33 | 4.5 | 4.6 |
| NERO | Avintaquin Canyon | Deer | Buck | 9 | 1 | 09/11 - 11/10 | 90:10 | 9477 | | 0 | | 3.67 | 4.4 | 4.4 |
| NERO | Avintaquin Canyon | Elk | Antlerless | 4 | 4 | 08/01 - 01/31 | 50:50 | 9477 | | 0 | | 5 | 4.3 | NA |
| NERO | Avintaquin Canyon | Elk | Bull | 3 | 1 | 09/01 - 10/31 | 75:25 | 9477 | | 0 | | 4.33 | 4.3 | NA |
| NERO | Buckhorn Ranch | Deer | Buck | 8 | 1 | 09/11 - 11/10 | 90:10 | 6475 | | 0 | | 4.71 | 4.5 | 4.5 |
| NERO | Little Red Creek | Deer | BUCK | 9 | 1 | 09/11 - 11/10 | 90:10 | 18100 | | 0 | | 4.38 | 4.3 | 3.8 |
| NERO | Little Red Creek | Elk | Antlerless | 0 | 15 | 08/01 - 01/31 | 0:100 | 18100 | | 0 | | 4.75 | 3.9 | 4.8 |
| NERO | Little Red Creek | Elk | Bull | 12 | 2 | 09/01 - 10/31 | 90:10 | 18100 | | 0 | | 4.62 | 4.9 | 4.6 |
| NERO | Moon Ranch | Deer | BUCK | 9 | 1 | 09/11 - 11/10 | 90:10 | 13000 | 10,257 | 0 | | 4.14 | 3.8 | 5 |
| NERO | Moon Ranch | Elk | Antlerless | 0 | 6 | 09/01 - 10/31 | 0:100 | 13000 | | 0 | | 3.33 | 3.3 | 1 |
| NERO | Moon Ranch | Elk | Bull | 9 | 1 | 09/01 - 10/31 | 90:10 | 13000 | | 0 | | 4.5 | 4.5 | 3.3 |
| NERO | Moon Ranch | Moose | Bull | 0 | 1 | 09/01 - 10/31 | 60:40 | 13000 | | 0 | | 5 | 5 | 3.4 |
| NERO | Sand Creek | Deer | Buck | 9 | 1 | 09/11 - 11/10 | 90:10 | 10200 | | 0 | | 4.2 | 4 | 3.6 |
| NERO | Sand Creek | Elk | Antlerless | 0 | 5 | 08/01 - 01/31 | 0:100 | 10200 | | 0 | | 4.75 | 5 | 4.8 |
| NERO | Sand Creek | Elk | Bull | 8 | 1 | 09/01 - 10/31 | 90:10 | 10200 | | 0 | | 4.5 | 4.5 | 4 |
| NERO | Sand Creek | Moose | Bull | 0 | 1 | 09/01 - 10/31 | 60:40 | 10200 | | 0 | | 4 | 1 | NA |
| NRO | 5S | Deer | Buck | 18 | 2 | 9/01 - 10/31 | 90:10 | 12028 | 8,956 | 0 | | 4.45 | 4.7 | NA |
| NRO | Bally Watts | Deer | BUCK | 9 | 1 | 09/11 - 11/10 | 90:10 | 10305 | | 0 | | 4.5 | 4.5 | 4.5 |
| NRO | Bear Springs | Deer | Buck | 9 | 1 | 9/11 - 11/10 | 90:10 | 14122 | 12,459 | 0 | | 4.86 | 4.4 | 4.7 |
| NRO | Bear Springs | Elk | Antlerless | 0 | 2 | 08/01 - 01/31 | 0:100 | 14122 | | 0 | | NA | 5 | 4 |
| NRO | Bear Springs | Elk | Bull | 9 | 1 | 09/01 - 10/31 | 90:10 | 14122 | | 0 | | 4.8 | 3.3 | 4.9 |
| NRO | Bear Springs | Moose | Bull | 1 | 1 | 09/01 - 10/31 | 60:40 | 14122 | | 0 | | 4 | 3.5 | 5 |
| NRO | Blind Springs | Deer | BUCK | 7 | 1 | 09/11 - 11/10 | 90:10 | 5169 | | 0 | | 4.17 | 4.5 | 4.7 |
| NRO | Blue Spring Hills | Deer | Buck | 9 | 1 | 09/01 - 10/31 | 90:10 | 8760 | 8546 | 0 | | 4.4 | 4.1 | 4.3 |
| NRO | Bluebell | Deer | Buck | 9 | 1 | 09/11 - 11/10 | 90:10 | 7480 | | 0 | | 4.22 | 4.5 | 3.6 |
| NRO | Chimney Rock | Deer | Buck | 18 | 2 | 09/11 - 11/10 | 90:10 | 38828 | | 0 | | 4.59 | 4.8 | 3.9 |
| NRO | Chimney Rock | Elk | Antlerless | 0 | 12 | 08/01 - 01/31 | 0:100 | 38828 | | 0 | | 4.78 | 4.8 | 4.7 |
| NRO | Chimney Rock | Elk | Bull | 18 | 2 | 09/01 - 11/30 | 90:10 | 38828 | | 0 | | 4.56 | 4.7 | 4.8 |
| NRO | Chimney Rock | Moose | Bull | 1 | 1 | 09/01 - 10/31 | 60:40 | 38828 | | 0 | | 5 | 4.5 | NA |
| NRO | Clear Creek | Deer | BUCK | 7 | 1 | 09/11 - 11/10 | 90:10 | 5128 | | 0 | | NA | 3 | NA |

| Region | CWMU | Species | Sex | Priv 2024 | Pub 2024 | Rec Hunt Date | Rec Ratio | Acres Private | Acres Priv Change | Acres Public | Acres Pub Change | Satisfaction 2022 | Satisfaction 2021 | Satisfaction 2020 |
|--------|-----------------------|-----------|------------|-----------|----------|---------------|-----------|---------------|-------------------|--------------|------------------|-------------------|-------------------|-------------------|
| NRO | Coldwater Ranch | Deer | Buck | 18 | 2 | 09/01 - 10/31 | 90:10 | 33667 | | 0 | | 4.64 | 4.8 | 4.5 |
| NRO | Coldwater Ranch | Elk | Antlerless | 0 | 20 | 08/01 - 01/31 | 0:100 | 33667 | | 0 | | 4.25 | 4.7 | 4.6 |
| NRO | Coldwater Ranch | Elk | Bull | 18 | 2 | 09/01 - 10/31 | 90:10 | 33667 | | 0 | | 4.8 | 4.6 | 4.8 |
| NRO | Deseret | Deer | Buck | 74 | 14 | 09/11 - 11/10 | 90:10 | 225228 | | 15359 | | 4.59 | 4.7 | 4.6 |
| NRO | Deseret | Elk | Antlerless | 0 | 310 | 08/01-01/31 | 0:100 | 225228 | | 15359 | | 4.44 | 4.4 | 4.5 |
| NRO | Deseret | Elk | Bull | 99 | 18 | 09/01 - 11/20 | 90:10 | 225228 | | 15359 | | 4.78 | 4.8 | 4.8 |
| NRO | Deseret | Moose | Bull | 2 | 2 | 09/01 - 10/31 | 60:40 | 225228 | | 15359 | | 5 | 4.3 | 5 |
| NRO | Deseret | Pronghorn | Buck | 21 | 16 | 09/01 - 10/31 | 60:40 | 225228 | | 15359 | | 4.83 | 4.5 | 4.7 |
| NRO | Dilly Ranch | Deer | Buck | 9 | 1 | 09/11 - 11/10 | 90:10 | 9500 | 10117 | 0 | | 4.8 | 4.6 | 4.9 |
| NRO | Double Cone | Deer | Buck | 6 | 2 | 09/11 - 11/10 | 90:10 | 5329 | | 4365 | | 3.8 | 4.2 | 4.4 |
| NRO | Double Cone | Elk | Antlerless | 0 | 7 | 08/01 - 01/31 | 0:100 | 5329 | | 4365 | | 1.75 | 4.8 | 2.2 |
| NRO | Double Cone | Elk | Bull | 6 | 2 | 09/01 - 10/31 | 90:10 | 5329 | | 4365 | | 4 | 4.9 | 3 |
| NRO | Dove Creek | Deer | Buck | 18 | 2 | 09/11 - 11/10 | 90:10 | 18770 | 18,740 | 570 | | 4.46 | 4.4 | 4.4 |
| NRO | Durst Mountain | Deer | Buck | 18 | 2 | 09/11 - 11/10 | 90:10 | 26358 | | 0 | | 4.5 | 4.4 | 4.4 |
| NRO | Durst Mountain | Elk | Antlerless | 0 | 30 | 08/01 - 10/31 | 0:100 | 26358 | | 0 | | 4.64 | 4.2 | 4.6 |
| NRO | Durst Mountain | Elk | Bull | 27 | 3 | 09/01 - 10/31 | 90:10 | 26358 | | 0 | | 4.69 | 4.7 | 4.3 |
| NRO | Durst Mountain | Moose | Bull | 1 | 1 | 09/01 - 10/31 | 60:40 | 26358 | | 0 | | 4 | 3 | 5 |
| NRO | East Fork Chalk Creek | Deer | Buck | 36 | 4 | 09/11 - 11/10 | 90:10 | 15260 | | 0 | | 4.31 | 4.4 | 4.1 |
| NRO | East Fork Chalk Creek | Elk | Antlerless | 0 | 30 | 08/01 - 01/31 | 0:100 | 15260 | | 0 | | 3.83 | 3.9 | 4.3 |
| NRO | East Fork Chalk Creek | Elk | Bull | 27 | 3 | 09/01 - 11/10 | 90:10 | 15260 | | 0 | | 4.21 | 4.3 | 4.5 |
| NRO | East Fork Chalk Creek | Moose | Bull | 3 | 2 | 09/01 - 10/31 | 60:40 | 15260 | | 0 | | 4.8 | 4.8 | 4.3 |
| NRO | Engineer Springs | Deer | Buck | 9 | 1 | 9/11 - 11/10 | 90:10 | 21943 | | 0 | | 4.33 | 4.8 | 4.7 |
| NRO | Ensign Ranches | Deer | Buck | 27 | 3 | 09/11 - 11/10 | 90:10 | 82246 | | 0 | | 4.61 | 4.8 | 4.7 |
| NRO | Ensign Ranches | Elk | Antlerless | 20 | 60 | 08/01 - 01/31 | 25:75 | 82246 | | 0 | | 4.4 | 4.1 | 4 |
| NRO | Ensign Ranches | Elk | Bull | 22 | 4 | 09/01 - 10/31 | 85:15 | 82246 | | 0 | | 4.55 | 4.3 | 4.6 |
| NRO | Ensign Ranches | Moose | Bull | 1 | 1 | 09/01 - 10/31 | 60:40 | 82246 | | 0 | | 5 | 5 | 4.7 |
| NRO | Folley Ridge | Deer | Buck | 23 | 3 | 09/11 - 11/10 | 90:10 | 18260 | 17,106 | 0 | | 4.19 | 4.5 | 4.2 |
| NRO | Folley Ridge | Elk | Antlerless | 0 | 20 | 08/01 - 01/31 | 0:100 | 18260 | | 0 | | 5 | 4 | 3.8 |
| NRO | Folley Ridge | Elk | Bull | 18 | 2 | 09/01 - 10/31 | 90:10 | 18260 | | 0 | | 4.76 | 4.6 | 4.6 |
| NRO | Golden Spike | Deer | Buck | 9 | 1 | 09/01 - 10/31 | 90:10 | 16556 | 11,362 | 0 | | 4.4 | 4.2 | 5 |
| NRO | Green Canyon | Deer | Buck | 7 | 2 | 09/11 - 11/10 | 90:100 | 5790 | 6,120 | 90 | 185 | 5 | 5 | 4.4 |
| NRO | Guildersleeve | Deer | Buck | 18 | 2 | 9/01 - 10/31 | 90:10 | 8000 | | 0 | | 4.67 | 4.5 | 4.6 |
| NRO | Guildersleeve | Elk | Antlerless | 0 | 10 | 08/01 - 01/31 | 0:100 | 8000 | | 0 | | 4.4 | 4.8 | 4.6 |
| NRO | Guildersleeve | Elk | Bull | 9 | 1 | 09/01 - 10/31 | 90:10 | 8000 | | 0 | | 4.5 | 4.6 | 4.9 |
| NRO | Indian Creek | Deer | BUCK | 9 | 1 | 09/11 - 11/10 | 90:10 | 7342 | 6,938 | 30 | | 2.47 | 1.8 | 2.5 |
| NRO | Middle Ridge | Deer | Buck | 7 | 2 | 09/11 - 11/10 | 90:10 | 5187.64 | 5,838 | 1337.3 | 260 | 3.44 | 4 | 3.6 |
| NRO | Mountain Meadow | Deer | Buck | 9 | 1 | 9/11 - 11/10 | 90:10 | 7947 | 7,942 | 0 | | 4.75 | 4.1 | 3.9 |
| NRO | North Peaks | Deer | Buck | 9 | 1 | 9/01 - 10/31 | 90:10 | 26244 | 27,464 | 2040 | 1,566 | 4.67 | 4.4 | 3.9 |
| NRO | North Peaks | Elk | Bull | 6 | 1 | 09/01 - 10/31 | 90:10 | 26244 | | 2040 | | 3.67 | 4.6 | 5 |
| NRO | North Promontory | Deer | Buck | 9 | 1 | 09/11 - 11/10 | 90:10 | 20790 | 24,090 | 0 | | 4.67 | 3.8 | 4.2 |
| NRO | Nucor West | Deer | BUCK | 9 | 1 | 09/11 - 11/10 | 90:10 | 6416 | 7,671 | 0 | | 4.63 | 5 | 4.7 |
| NRO | Park Valley | Pronghorn | Buck | 2 | 2 | 09/01 - 10/31 | 60:40 | 5408 | 5,675 | 0 | | 4 | 3 | 4.7 |
| NRO | Park Valley Hereford | Deer | Buck | 17 | 5 | 09/11 - 11/10 | 90:10 | 12253 | | 2180 | | 3.69 | 3.1 | 3 |
| NRO | Pisgah Mountain | Deer | Buck | 14 | 2 | 09/01 - 10/31 | 90:10 | 5221 | 5,705 | 0 | | 3.9 | 4.4 | 4.2 |
| NRO | Plymouth Peak | Deer | Buck | 7 | 1 | 09/11 - 11/10 | 90:10 | 5179 | | 0 | | 5 | 4 | 5 |
| NRO | Pocatello Valley | Deer | Buck | 9 | 1 | 09/01 - 10/31 | 90:10 | 8510 | 8,449 | 0 | | 4.75 | 3.3 | 3.7 |
| NRO | Promontory Point | Deer | Buck | 9 | 1 | 9/11 - 11/10 | 90:10 | 19498 | 20,456 | 0 | | 4.86 | 5 | 5 |
| NRO | Raft River | Deer | Buck | 7 | 3 | 9/11-11/10 | 90:10 | 5380 | 5,623 | 1240 | | 4.57 | 4.6 | NA |
| NRO | Rosette | Deer | Buck | 3 | 1 | 09/01 - 10/31 | 90:10 | 5305 | 5,142 | 0 | | 2.33 | 2.3 | 5 |
| NRO | SJ Ranch | Elk | Antlerless | 0 | 6 | 08/01 - 01/31 | 0:100 | 6476 | | 0 | | 4.75 | 4 | 4 |
| NRO | SJ Ranch | Elk | Bull | 7 | 1 | 09/01 - 10/31 | 90:10 | 6476 | | 0 | | 4.43 | 4.7 | 4.8 |
| NRO | SJ Ranch | Moose | Bull | 1 | 1 | 09/01 - 10/31 | 60:40 | 6476 | | 0 | | 3 | 5 | 5 |

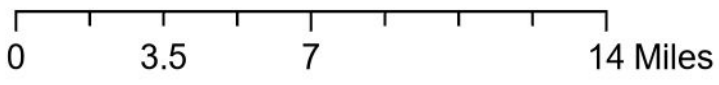
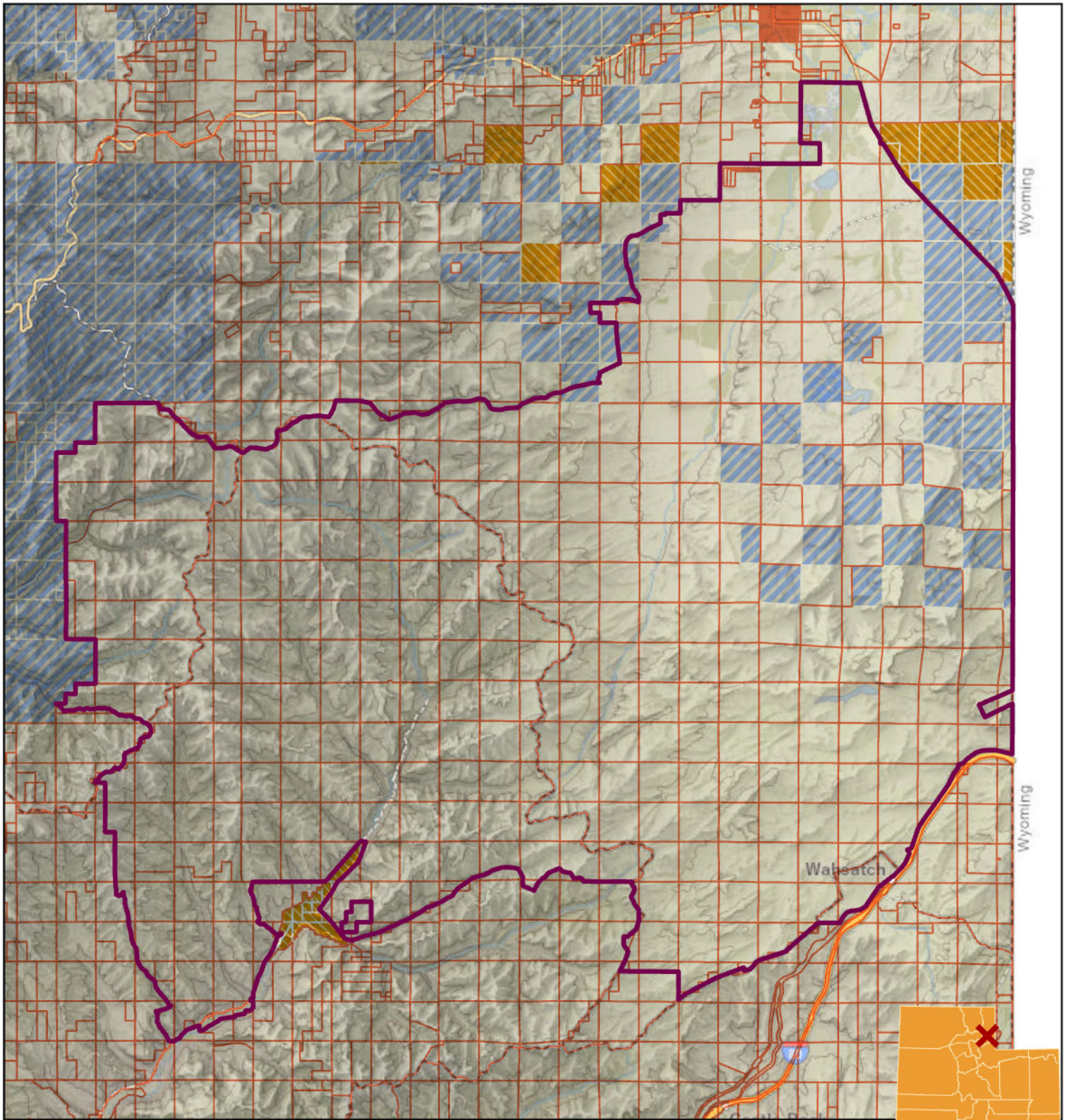
| Region | CWMU | Species | Sex | Priv 2024 | Pub 2024 | Rec Hunt Date | Rec Ratio | Acres Private | Acres Priv Change | Acres Public | Acres Pub Change | Satisfaction 2022 | Satisfaction 2021 | Satisfaction 2020 |
|--------|----------------------|---------|------------|-----------|----------|---------------|-----------|---------------|-------------------|--------------|------------------|-------------------|-------------------|-------------------|
| NRO | Skull Crack | Deer | Buck | 9 | 1 | 09/11 - 11/10 | 90:10 | 27961 | | 0 | | 4.78 | 4.8 | 5 |
| NRO | Skull Crack | Elk | Antlerless | 0 | 15 | 08/01 - 01/31 | 0:100 | 27961 | | 0 | | 4.92 | 4.9 | 4.6 |
| NRO | Skull Crack | Elk | Bull | 9 | 1 | 09/01 - 10/31 | 90:10 | 27961 | | 0 | | 5 | 5 | 5 |
| NRO | Skull Crack | Moose | Bull | 3 | 2 | 09/01 - 10/31 | 60:40 | 27961 | | 0 | | 5 | 4.8 | 5 |
| NRO | South Canyon | Deer | Buck | 9 | 2 | 09/11 - 11/10 | 90:10 | 16260 | | 480 | | 4.2 | 4.2 | 4 |
| NRO | South Canyon | Elk | Antlerless | 0 | 10 | 09/01 - 10/31 | 0:100 | 16260 | | 480 | | 4 | 4.3 | 4.2 |
| NRO | South Canyon | Elk | Bull | 9 | 2 | 09/01 - 10/31 | 90:10 | 16260 | | 480 | | 4.36 | 4.6 | 3.9 |
| NRO | South Canyon | Moose | Bull | 1 | 1 | 09/01 - 10/31 | 60:40 | 16260 | | 480 | | 4 | 4 | 4.4 |
| NRO | Spring Creek Acres | Deer | Buck | 8 | 1 | 09/11 - 11/10 | 90:10 | 6600 | | 0 | | 4.4 | 5 | 3.7 |
| NRO | Thatcher Mountain | Deer | Buck | 9 | 1 | 09/01 - 10/31 | 90:10 | 5411 | | 0 | | 5 | 5 | 4.8 |
| NRO | Tunnel Hollow | Deer | Buck | 9 | 1 | 09/11 - 11/10 | 90:10 | 10237 | | 0 | | 4.56 | NA | NA |
| NRO | Tunnel Hollow | Elk | Bull | 9 | 1 | 09/01 - 10/31 | 90:10 | 10237 | | 0 | | 3 | NA | NA |
| NRO | Two Bear | Deer | Buck | 9 | 1 | 09/01 - 10/31 | 90:10 | 35336 | 34,903 | 0 | | 4.71 | 4.4 | 4.5 |
| NRO | Two Bear | Elk | Antlerless | 0 | 60 | 08/01 - 01/31 | 0:100 | 35336 | | 0 | | 3.68 | 4.7 | 4.7 |
| NRO | Two Bear | Elk | Bull | 45 | 5 | 09/01 - 10/31 | 90:10 | 35336 | | 0 | | 4.89 | 4.7 | 4.8 |
| NRO | Two Bear | Moose | Bull | 1 | 1 | 09/01 - 10/31 | 60:40 | 35336 | | 0 | | 3 | 4 | 4.5 |
| NRO | Washakie | Deer | Buck | 9 | 1 | 09/11 - 11/10 | 90:10 | 14516 | 14,218 | 0 | | 4.88 | 4.7 | 4.3 |
| NRO | Weber Florence Creek | Deer | Buck | 81 | 9 | 09/01 - 10/31 | 90:10 | 36915 | 42,428 | 0 | | 4.13 | 4.3 | 4.1 |
| NRO | Weber Florence Creek | Elk | Antlerless | 0 | 65 | 08/01 - 01/31 | 0:100 | 36915 | | 0 | | 3.85 | 4.4 | 3.9 |
| NRO | Weber Florence Creek | Elk | Bull | 90 | 10 | 09/01 - 11/30 | 90:10 | 36915 | | 0 | | 4.47 | 4.4 | 4.5 |
| NRO | Weber Florence Creek | Moose | Bull | 5 | 4 | 09/01 - 10/31 | 60:40 | 36915 | | 0 | | 4.86 | 3.9 | 4 |
| SERO | Deer Haven | Deer | Buck | 18 | 2 | 09/01 - 10/31 | 90:10 | 15194 | 17,177 | 0 | | 4.33 | 4.8 | 4.2 |
| SERO | Hiawatha | Deer | Buck | 9 | 1 | 09/11 - 11/10 | 90:10 | 16129 | | 0 | | 4.2 | 5 | 2.3 |
| SERO | Hiawatha | Elk | Antlerless | 6 | 9 | 8/1 - 1/31 | 40:60 | 16129 | | 0 | | 3.29 | 4.1 | 2.9 |
| SERO | Hiawatha | Elk | Bull | 8 | 2 | 9/1 - 11/30 | 80:20 | 16129 | | 0 | | 4.57 | 3.8 | 3.7 |
| SERO | Indian Head | Deer | Buck | 18 | 2 | 9/1 - 10/31 | 90:10 | 22744 | | 1130 | | 4.54 | 4.2 | 4.7 |
| SERO | Indian Head | Elk | Antlerless | 0 | 12 | 08/01 - 01/31 | 0:100 | 22744 | | 1130 | | 3.86 | 4.2 | 4 |
| SERO | Indian Head | Elk | Bull | 9 | 1 | 09/01 - 10/31 | 90:10 | 22744 | | 1130 | | 4.75 | 4 | 4.8 |
| SERO | Jump Creek | Elk | Antlerless | 6 | 9 | 08/01 - 01/31 | 40:60 | 7255 | | 0 | | 4.55 | 4.8 | 4.8 |
| SERO | Jump Creek | Elk | Bull | 4 | 1 | 09/01 - 10/31 | 80:20 | 7255 | | 0 | | 5 | 5 | 5 |
| SERO | Patmos Ridge | Deer | Buck | 9 | 1 | 09/11 - 11/10 | 90:10 | 10747 | | 0 | | 4.33 | 3.9 | 4.5 |
| SERO | Patmos Ridge | Elk | Bull | 5 | 1 | 09/01 - 10/31 | 90:10 | 10747 | | 0 | | 5 | 3.5 | 5 |
| SERO | Preston Nutter Ranch | Deer | Buck | 9 | 1 | 09/01 - 10/31 | 90:10 | 26851 | | 0 | | 4.5 | 5 | 5 |
| SERO | Preston Nutter Ranch | Elk | Antlerless | 0 | 8 | 8/1 - 1/31 | 0:100 | 26851 | | 0 | | 4 | 5 | 5 |
| SERO | Preston Nutter Ranch | Elk | Bull | 18 | 2 | 09/01 - 10/31 | 90:10 | 26851 | | 0 | | 5 | 4.9 | 5 |
| SERO | Roan Cliffs | Deer | BUCK | 9 | 1 | 09/01 - 10/31 | 90:10 | 10045 | | 480 | | 4.5 | 4.9 | 4.4 |
| SERO | Roan Cliffs | Elk | Antlerless | 0 | 6 | 08/01 - 01/31 | 0:100 | 10045 | | 480 | | 5 | 3.7 | 4.3 |
| SERO | Roan Cliffs | Elk | Bull | 9 | 1 | 09/01 - 10/31 | 90:10 | 10045 | | 480 | | 4.57 | 4.8 | 4.7 |
| SERO | Scofield Canyons | Deer | Buck | 9 | 1 | 09/11 - 11/10 | 90:10 | 12310 | | 40 | | 4.44 | 4.2 | 4.6 |
| SERO | Scofield Canyons | Elk | Antlerless | 0 | 9 | 8/1 - 1/31 | 0:100 | 12310 | | 40 | | 4.86 | 3.3 | 3.6 |
| SERO | Scofield Canyons | Elk | Bull | 7 | 1 | 09/01 - 10/31 | 90:10 | 12310 | | 40 | | 4.75 | 4.8 | 4.3 |
| SERO | Scofield East | Elk | Antlerless | 0 | 14 | 08/01 - 01/31 | 0:100 | 10124 | | 0 | | 3.5 | 4.2 | 4.8 |
| SERO | Scofield East | Elk | Bull | 7 | 1 | 09/01 - 10/31 | 90:10 | 10124 | | 0 | | 4.83 | 4.5 | 4.2 |
| SERO | Scofield West | Deer | Buck | 13 | 2 | 09/01 - 10/31 | 90:10 | 11565 | 11,784 | 0 | | 4.64 | 4.2 | 4.6 |
| SERO | Scofield West | Elk | Antlerless | 15 | 23 | 08/01 - 01/31 | 40:60 | 11565 | | 0 | | 4.04 | 3.5 | 3.4 |
| SERO | Scofield West | Elk | Bull | 8 | 2 | 09/01 - 10/31 | 80:20 | 11565 | | 0 | | 4.86 | 5 | 5 |
| SERO | Soldier Summit | Deer | Buck | 18 | 2 | 9/1 - 10/31 | 90:10 | 22218 | | 0 | | 4.36 | 4.5 | 4.4 |
| SERO | Soldier Summit | Elk | Antlerless | 0 | 16 | 08/01 - 01/31 | 0:100 | 22218 | | 0 | | 3.33 | 4.5 | 4 |
| SERO | Soldier Summit | Elk | Bull | 14 | 2 | 09/01 - 10/31 | 90:10 | 22218 | | 0 | | 4.89 | 5 | 4.8 |
| SERO | Spring Creek/Dodge | Deer | BUCK | 51 | 6 | 09/01 - 10/31 | 90:10 | 83689.5 | | 0 | | 4.29 | 4.5 | 4.3 |
| SERO | Spring Creek/Dodge | Elk | Antlerless | 5 | 15 | 08/01 - 01/31 | 25:75 | 83689.5 | | 0 | | 3.09 | 3.9 | 2.9 |
| SERO | Spring Creek/Dodge | Elk | Bull | 11 | 2 | 09/01 - 10/31 | 85:15 | 83689.5 | | 0 | | 4.88 | 4.3 | 4.4 |

| Region | CWMU | Species | Sex | Priv 2024 | Pub 2024 | Rec Hunt Date | Rec Ratio | Acres Private | Acres Priv Change | Acres Public | Acres Pub Change | Satisfaction 2022 | Satisfaction 2021 | Satisfaction 2020 |
|--------|-------------------|-----------|-----------------|-----------|----------|---------------|-----------|---------------|-------------------|--------------|------------------|-------------------|-------------------|-------------------|
| SERO | West Ridge | Deer | Buck | 45 | 5 | 09/11 - 11/10 | 90:10 | 15384 | 21,803 | 0 | | 4.06 | 4.5 | NA |
| SERO | West Ridge | Elk | Bull | 16 | 2 | 09/01 - 10/31 | 90:10 | 15384 | | 0 | | 4.1 | 4.6 | NA |
| SERO | West Ridge | Elk | Antlerless | 0 | 5 | 8/1 - 1/31 | 0:100 | 15384 | | | | NA | NA | NA |
| SRO | Alton | Deer | Cactus Buck | 4 | 1 | 9/1 - 10/31 | 90:10 | 34212 | 33,995 | 1860 | | NA | NA | NA |
| SRO | Alton | Deer | Management Buck | 4 | 1 | 9/01 - 10/31 | 90:10 | 34212 | | 1860 | | NA | NA | NA |
| SRO | Alton | Deer | Premium Buck | 17 | 3 | 9/01 - 10/31 | 90:10 | 34212 | | 1860 | | 4.9 | 4.5 | 4.5 |
| SRO | Alton | Elk | Antlerless | 4 | 6 | 09/01 - 10/31 | 40:60 | 34212 | | 1860 | | 2.75 | 4.5 | 3.7 |
| SRO | Alton | Elk | Bull | 4 | 1 | 09/01 - 10/31 | 80:20 | 34212 | | 1860 | | 4.5 | 4.4 | 4.5 |
| SRO | Bar J Ranch | Deer | Buck | 8 | 1 | 09/11 - 11/10 | 90:10 | 5970 | | 330 | | 4.25 | 3 | 3.5 |
| SRO | Bar J Ranch | Elk | Antlerless | 8 | 12 | 08/01 - 01/31 | 40:60 | 5970 | | 330 | | 4.55 | 4.7 | 3.3 |
| SRO | Bar J Ranch | Elk | Bull | 8 | 2 | 09/01 - 10/31 | 80:20 | 5970 | | 330 | | 4.91 | 4.8 | 4.6 |
| SRO | Boobe Hole | Deer | Buck | 16 | 2 | 09/11-11/10 | 90:10 | 12000 | | 0 | | 2.85 | 3.3 | 3.2 |
| SRO | Boobe Hole | Elk | Antlerless | 0 | 10 | 09/01 - 11/20 | 0:100 | 12000 | | 0 | | 4.11 | 3 | 4.1 |
| SRO | Boobe Hole | Elk | Bull | 14 | 2 | 09/01 - 11/20 | 90:10 | 12000 | | 0 | | 4.93 | 4.8 | 4.6 |
| SRO | Iron Spring | Deer | Buck | 9 | 1 | 09/11 - 11/10 | 90:10 | 7258 | 8117 | 0 | | 5 | 4 | NA |
| SRO | Iron Spring | Pronghorn | Buck | 1 | 1 | 09/01 - 10/31 | 60:40 | 7258 | | 0 | | NA | 5 | NA |
| SRO | Mt. Carmel | Deer | Antlerless | 0 | 5 | 08/01 - 12/31 | 0:100 | 14882 | 14,657 | 460 | | 4.33 | 5 | 5 |
| SRO | Mt. Carmel | Deer | Buck | 17 | 3 | 09/11 - 11/10 | 90:10 | 14882 | | 460 | | 4.19 | 3.4 | 4.2 |
| SRO | Oak Ranch | Deer | Buck | 12 | 3 | 09/01 - 10/31 | 90:10 | 4980 | | 120 | | 2.82 | 3.2 | 3.3 |
| SRO | Old Woman Plateau | Deer | Buck | 9 | 3 | 09/11 - 11/10 | 90:10 | 6,840 | 6,565 | 1280 | 1,400 | 3.71 | 3.3 | 4.4 |
| SRO | Old Woman Plateau | Elk | Antlerless | 0 | 4 | 08/01 - 01/31 | 0:100 | 6840 | 6,565 | 1280 | 1,400 | 5 | 4.3 | 5 |
| SRO | Old Woman Plateau | Elk | Bull | 8 | 2 | 09/01 - 11/20 | 90:10 | 6840 | | 1280 | | 4.1 | 3.5 | 4.8 |
| SRO | Zane | Pronghorn | Buck | 3 | 2 | 09/01 - 10/31 | 60:40 | 9635 | | 0 | | 4.4 | 3.5 | 4.8 |
| SRO | Zane | Pronghorn | Doe | 4 | 6 | 09/01 - 10/31 | 40:60 | 9635 | 10,700 | 0 | | 4 | 3.3 | 3.6 |

| Region | CWMU | Species | Sex | First Year | Rec Private | Rec Public | Rec Hunt Date | Rec Ratio | COR Type | Acres Private | Acres Public | Unit | County |
|--------|-----------------------|-----------|------------|------------|-------------|------------|---------------|-----------|----------|---------------|--------------|------|-----------|
| NERO | Diamond Mountain | Deer | Buck | 2024 | 9 | 1 | 09/11 - 11/10 | 90:10 | New | 10540 | | 9C | Uintah |
| NERO | Diamond Mountain | Elk | Antlerless | 2024 | 1 | 2 | 08/01 - 01/31 | 40:60 | New | 10540.4 | 0 | 9C | Uintah |
| NERO | Diamond Mountain | Elk | Bull | 2024 | 4 | 1 | 09/01 - 10/31 | 80:20 | New | 10540.4 | 0 | 9C | Uintah |
| NRO | Prohibition Springs | Pronghorn | Buck | 2024 | 1 | 1 | 09/01 - 10/31 | 60:40 | New | 16413 | 0 | 1 | Box Elder |
| SERO | Green River Flat | Pronghorn | Buck | 2024 | 3 | 2 | 08/01 - 10/31 | 60:40 | New | 10500 | 0 | 10B | Grand |
| SERO | Green River Flat | Pronghorn | Doe | 2024 | 4 | 6 | 08/01 - 10/31 | 40:60 | New | 10500 | 0 | 10B | Grand |
| SRO | Kimberly | Deer | Buck | 2024 | 4 | 1 | 9/01 - 10/31 | 90:10 | New | 5614 | 160 | 22 | Piute |
| SRO | Kimberly | Elk | Antlerless | 2024 | 0 | 0 | 08/01 - 01/31 | 0:100 | New | 5614 | 160 | 22 | Piute |
| SRO | Kimberly | Elk | Bull | 2024 | 0 | 0 | 09/01 - 10/31 | 90:10 | New | 5614 | 160 | 22 | Piute |
| CRO | Rock House | Deer | Buck | 2024 | 9 | 1 | 09/11 - 11/10 | 90:10 | New | 7,253 | 0 | 19C | Juab |
| NRO | Sharp Mountain | Deer | Buck | 2024 | 18 | 2 | 09/11 - 11/10 | 90:10 | New | 27,103 | 0 | 3 | Cache |
| NRO | Sharp Mountain | Elk | Antlerless | 2024 | 0 | 10 | 08/01 - 01/31 | 0:100 | New | 27,103 | 0 | 3 | Cache |
| NRO | Sharp Mountain | Elk | Bull | 2024 | 18 | 2 | 09/01 - 10/31 | 90:10 | New | 27,103 | 0 | 3 | Cache |
| NRO | Sharp Mountain | Moose | Bull | 2024 | 1 | 1 | 09/01 - 10/31 | 60:40 | New | 27,103 | 0 | 3 | Cache |
| NRO | The Rose of Snowville | Deer | Antlerless | 2024 | 2 | 8 | 08/01 - 12/31 | 25:75 | New | 26,725 | 0 | 1 | Box Elder |
| NRO | The Rose of Snowville | Deer | Buck | 2024 | 5 | 2 | 09/11 - 11/10 | 85:15 | New | 26,725 | 0 | 1 | Box Elder |
| NRO | The Rose of Snowville | Pronghorn | Buck | 2024 | 3 | 2 | 09/01 - 10/31 | 60:40 | New | 26,725 | 0 | 1 | Box Elder |
| NRO | The Rose of Snowville | Pronghorn | Doe | 2024 | 1 | 2 | 08/01 - 10/31 | 40:60 | New | 26,725 | 0 | 1 | Box Elder |

| CWMU | Min Harvest last COR 2021 - 2023 | Actual harvest 20, 21, 22 | Min harvest new COR |
|----------------------|-------------------------------------|------------------------------|---------------------|
| Alton | 30 | 16 | 18 |
| Bar J | 25 | 28 | 25 |
| Bear Springs | 4 | 2 | 4 |
| Old Woman | 10 | 9 | 10 |
| Bear Mountain | 24 | 22 | 24 |
| Three C | 60 | 37 | 60 |
| Wallsburg | 15 | 8 | 15 |
| Avintaquin | 18 | 8 | 18 |
| Little Red | 50 | 34 | 50 |
| Moon Ranch | 20 | 3 | 15 |
| Sand Creek | 15 | 16 | 15 |
| Hiawatha | NA | NA | 22 |
| Indian Head | 12 | 14 | 12 |
| Jump Creek | 15 | 35 | 20 |
| Preston Nutter | 8 | 8 | 8 |
| Roan Cliffs | 6 | 7 | 6 |
| Scofield Canyons | 16 | 20 | 16 |
| Scofield East | 18 | 16 | 18 |
| Scofield West | 50 | 50 | 50 |
| Soldier Summit | 16 | 19 | 16 |
| Spring Creek Dodge | 30 | 20 | 30 |
| Chimney Rock | 27 | 32 | 27 |
| Coldwater | 48 | 37 | 48 |
| Deseret | 600 | 740 | 697 |
| Double Cone | 12 | 9 | 12 |
| Durst | 65 | 56 | 67 |
| East Fork | 60 | 35 | 60 |
| Ensign | 180 | 135 | 180 |
| Folley Ridge | 20 | 13 | 45 |
| Guildersleeve | 21 | 17 | 22 |
| SJ Ranch | 14 | 12 | 14 |
| Sharp Mountain | 20 | 3 | 16 |
| Skull Crack | 40 | 41 | 40 |
| South Canyon | 24 | 17 | 24 |
| Two Bear | 50 | 87 | 50 |
| Weber Florence Creek | 100 | 73 | 127 |

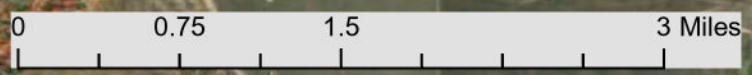
Deseret CWMU



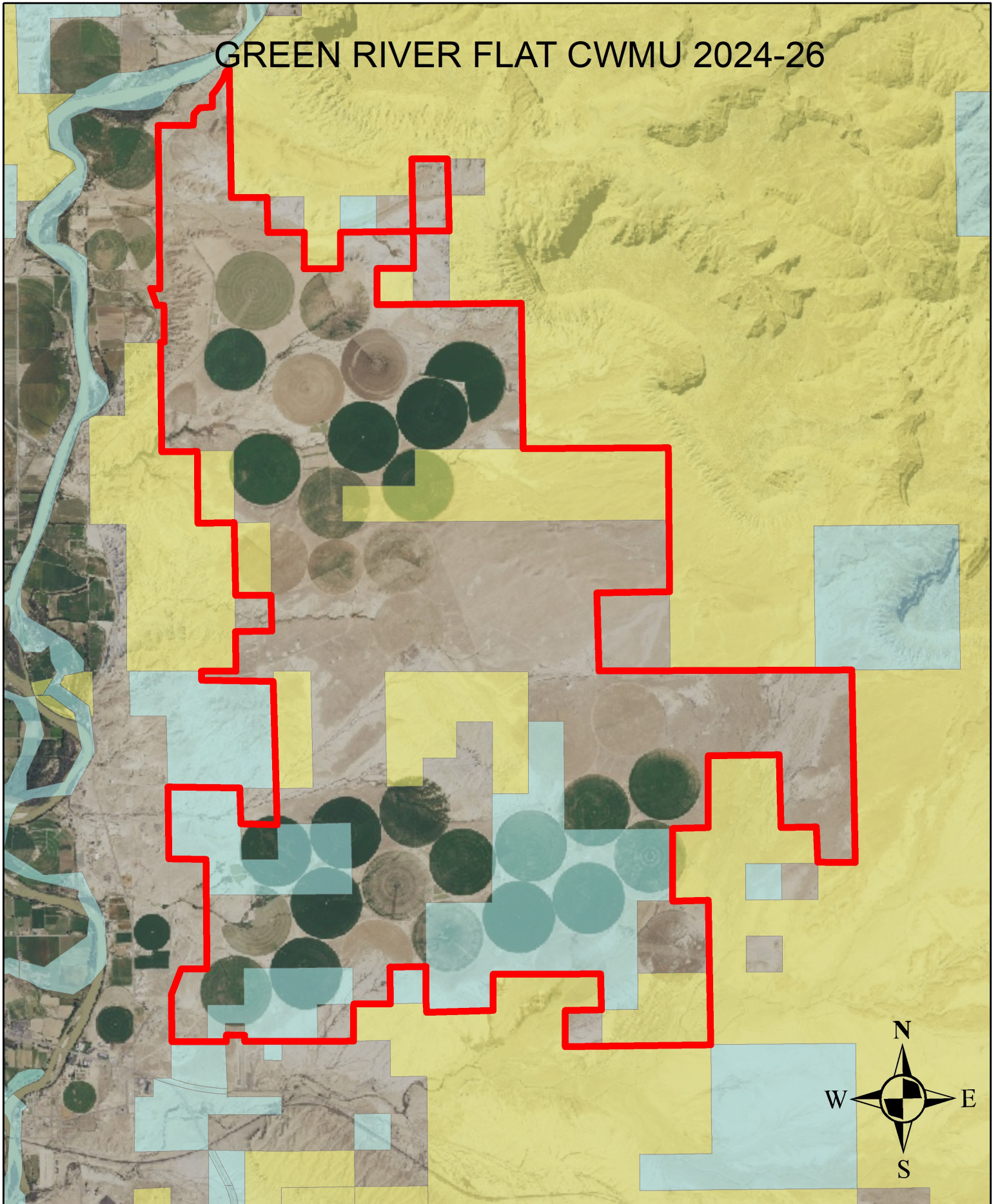
-  CWMU Boundary
-  Private Parcel
-  Federal Parcel
-  State Parcel



Diamond Mountain CWMU



GREEN RIVER FLAT CWMU 2024-26



1126

1135

113

476

113

Proposed Beaver Mountain Elk CWMU Boundary Approximately 5,300 acres Outlined in Yellow

Hogback

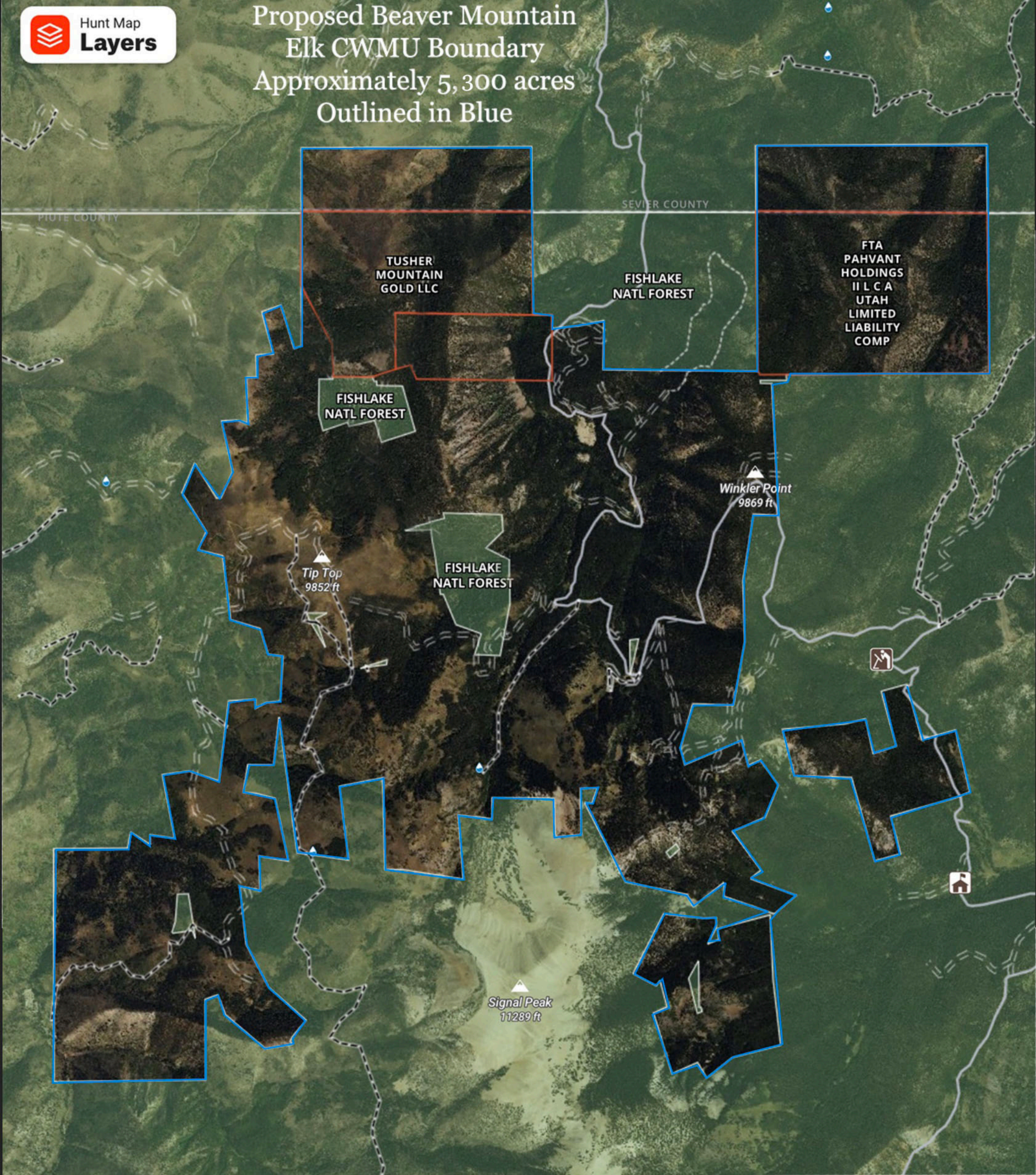
Signal Peak

474

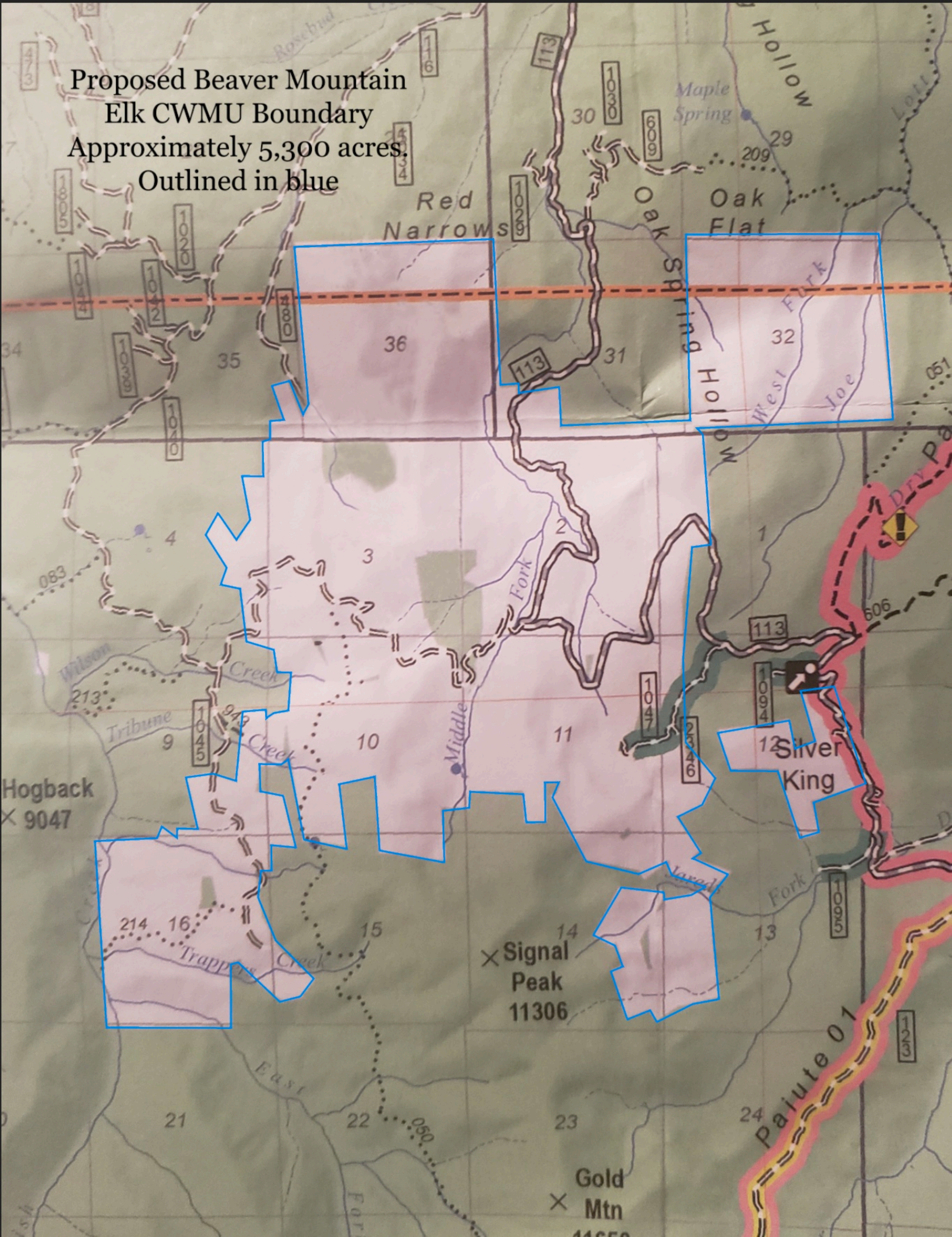
113

123

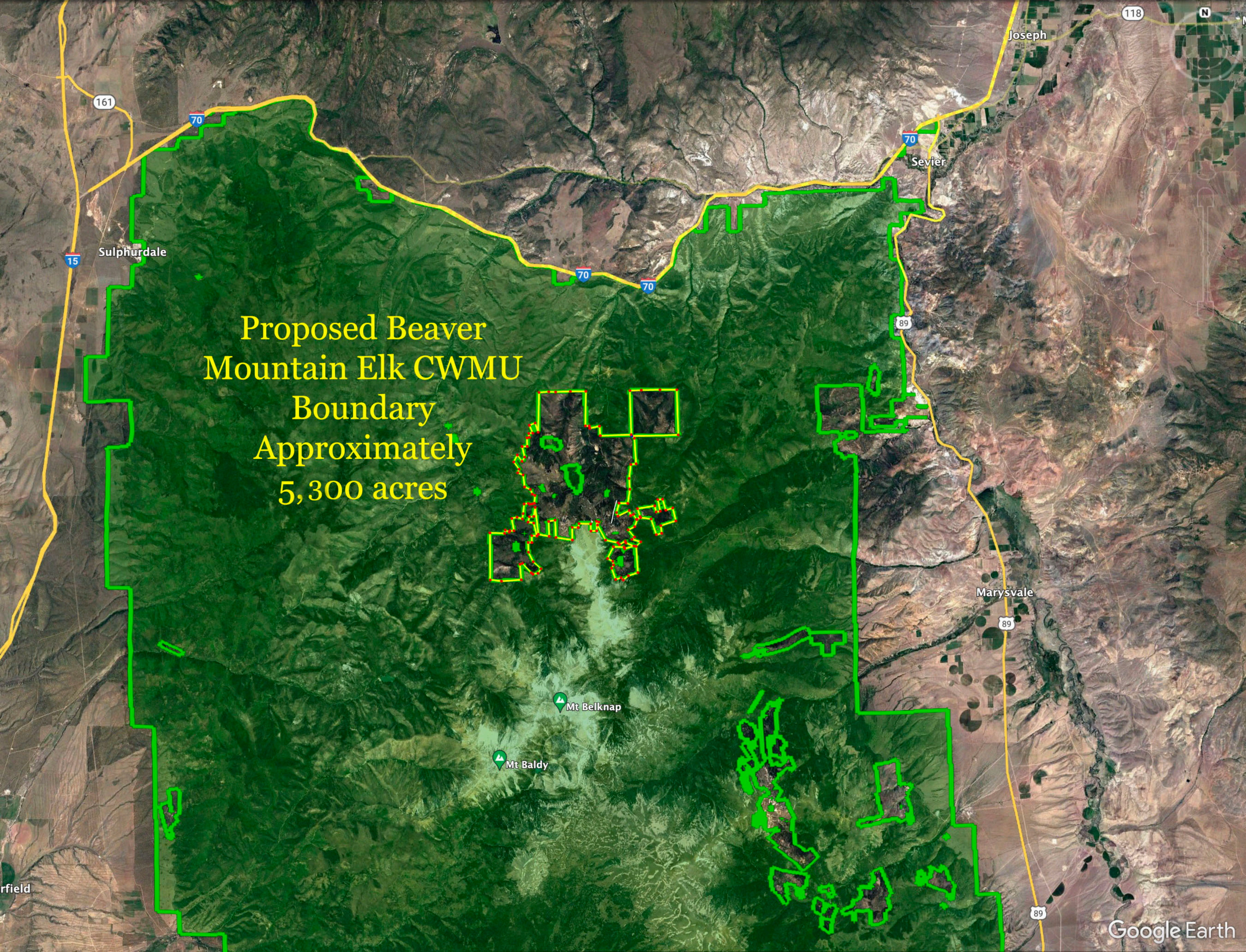
Proposed Beaver Mountain Elk CWMU Boundary Approximately 5,300 acres Outlined in Blue



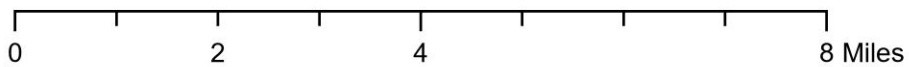
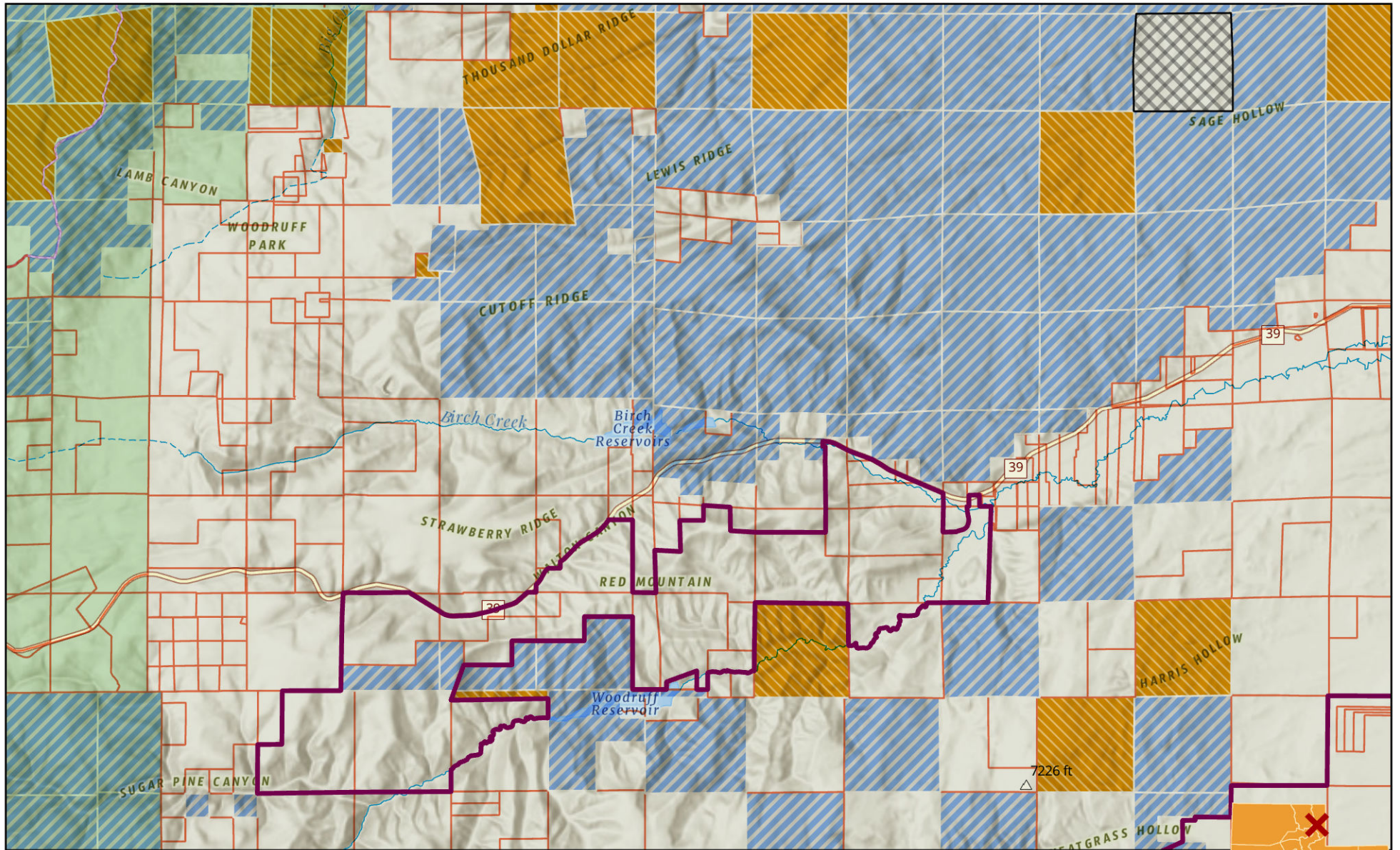
Proposed Beaver Mountain
Elk CWMU Boundary
Approximately 5,300 acres.
Outlined in blue



Proposed Beaver
Mountain Elk CWMU
Boundary
Approximately
5,300 acres

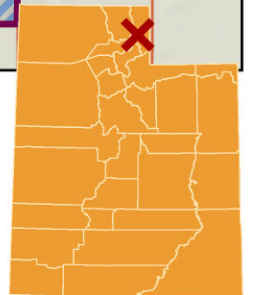


Middle Ridge CWMU

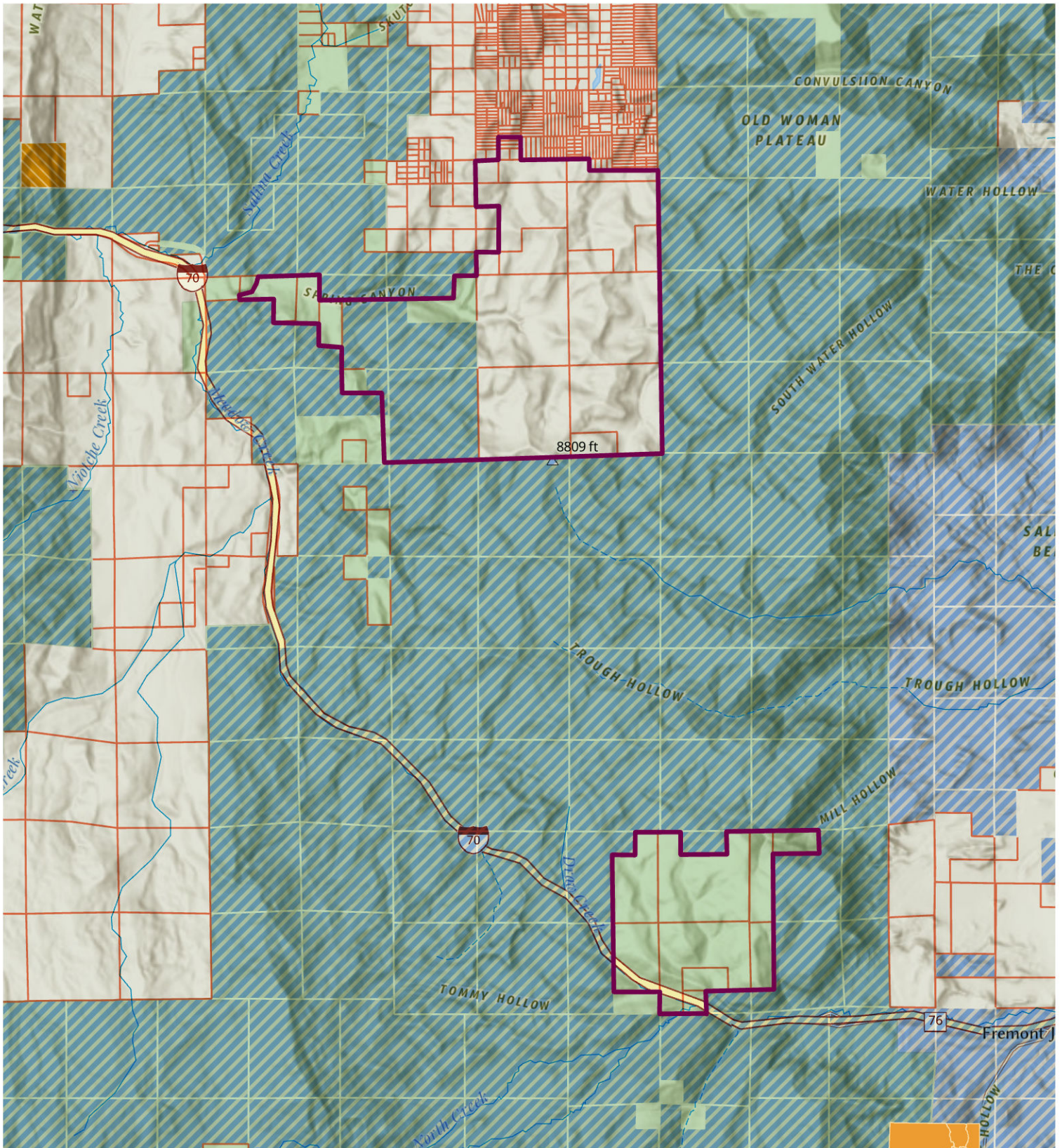


Scale: 1:120,000

- CWMU Boundary
- Private Parcel
- Federal Parcel
- State Parcel
- USFS District
- Tradelands








Old Woman CWMU



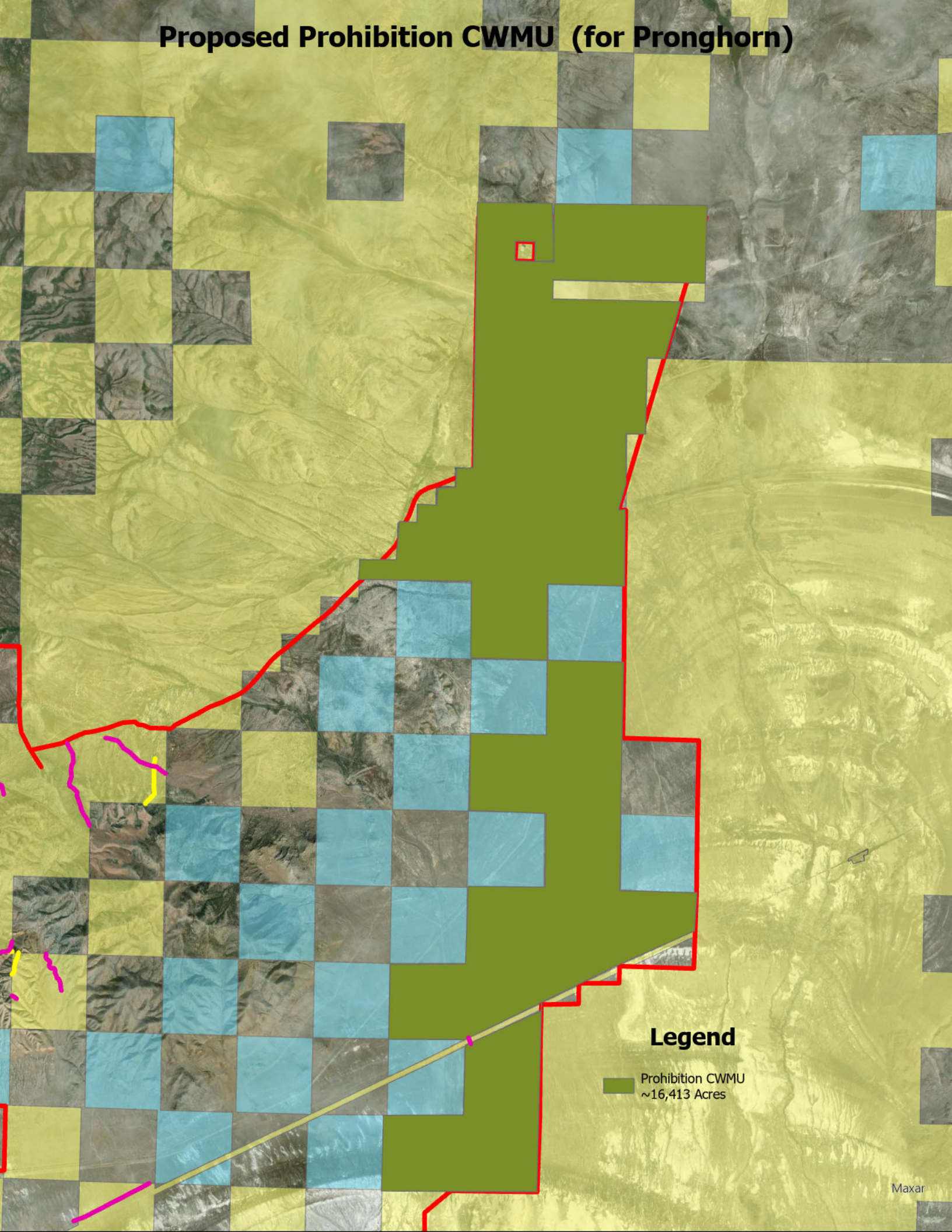
0 1.5 3 6 Miles

Scale: 1:120,000

-  CWMU Boundary
-  Private Parcel
-  Federal Parcel
-  State Parcel
-  USFS District

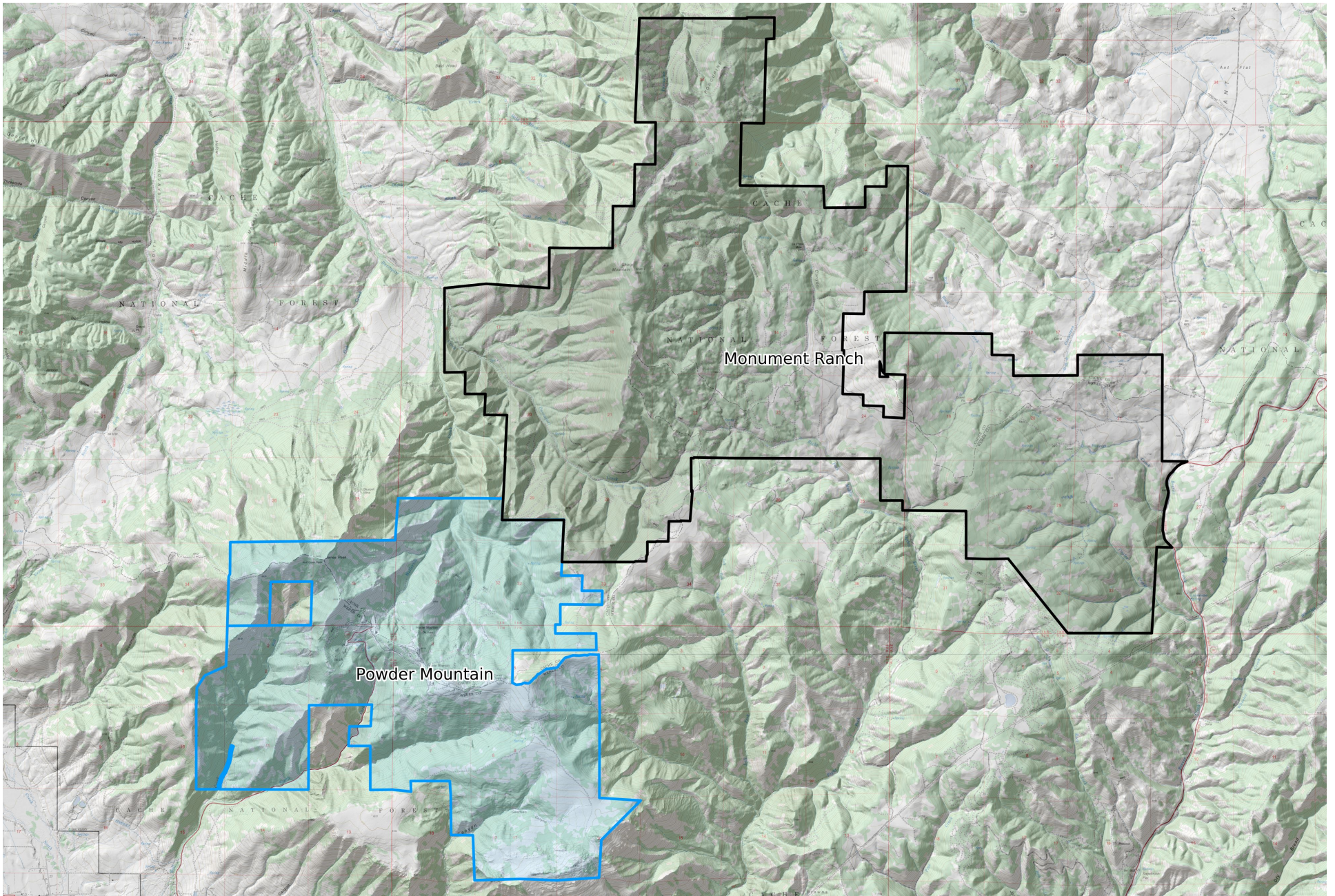


Proposed Prohibition CWMU (for Pronghorn)



Legend

Prohibition CWMU
~16,413 Acres



CWMU Parcels
WGS84
UTM Zone 12T